

October 2019

Volume 19 Number 10

Newsletter of the Lake County (IL)

Philatelic Society - Established 1933

Website: [LCPSHOME.ORG](http://LCPSHOME.ORG)

# Perforations



Last month we talked about the MILCOPEX stamp show, putting together a club reference library, and member's showing off interesting items they have collected over the years.



This month we will continue what we started with items collected by the "stamp collector" an moving on to how we store our treasures — the albums and all the paraphernalia that goes into collecting.

In addition, we will discuss plans for the Holiday Bruch coming in December.

2019 Stamp Program: This year the USPS issued 112 different postage stamps on 37 formats — a few less than last year.

The list includes:

- Forever Love: Hearts Blossom (Scott 5339)
- Forever Year of the Boar (Scott 5340)
- Forever Additional Oz Uncle Sam Hat (Coil) (Scott 5341)
- Forever U.S. Flag (Coil)(APU) (Scott 5342)
- Forever U.S. Flag (Coil)(BCA) (Scott 5343)
- Forever U.S. Flag (DSB)(APU) (Scott 5344)
- Forever U.S. Flag (DSB)(BCA) (Scott 5345)
- Non-Machinable Rate Forever California Dogface Butterfly (Scott 5346)
- \$7.35 Priority Mail: Joshua Tree National Landmark - UT (Scott 5347)
- \$22.50 Express Mail: Bethesda Fountain - NY (Scott 5348)
- Forever Gregory Hines - Black Heritage: 42nd in a series (Scott 5349)
- Forever Cactus Flowers (10 designs) (Scott 5350-5359)
- Forever Alabama Statehood Bicentennial (Scott 5360)
- Forever Star Ribbon (Scott 5361)
- Forever Star Ribbon (Coil) (Scott 5362)
- Postcard Forever Coral Reefs (Scott 5363-5366)
- Postcard Forever Coral Reefs (Coil) (Scott 5367-5370)



**Treasures' Report: Total – \$3,000.00+**

**Local Stamp Shows**

**CHICAGOPEX**  
 Westin Chicago Northwest  
 400 Park Boulevard  
 Itasca IL  
 November 22, 23 and 24

**SUPLEX 2019**  
 Operating Engineers Hall  
 6200 Joliet Rd  
 Countryside IL 60525  
 November 30

**MSDA CHICAGO SHOW WEST**  
 Holiday Inn Oakbrook Terrace  
 17 W 350 22nd St  
 Oakbrook Terrace, IL  
 December 14 and 15

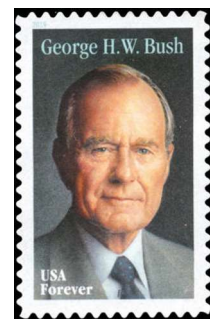
**ASDA Show**  
 Holiday Inn Chicago Oakbrook  
 17 W. 350 22nd St.  
 Oakbrook Terrace  
 March 20-22

**Next meeting:**  
**7-PM on Tuesday 29 October 2019**  
**at the Grayslake Library**  
**100 Library Lane - Grayslake IL 60030**



**Officers:**  
 Dr Tom Willer – President  
 Bill Schultz – Vice President  
 Dave Sadler – Secretary  
 Ed Pieklo – Treasurer

Forever Marvin Gaye - Music Icon: 9th in a series (Scott 5371)  
 Forever Post-Office Murals (5 designs) (Scott 5372-5376)  
 Forever "Little Mo" Maureen Connolly Brinker (Scott 5377)  
 Forever Transcontinental Railroad - 150th Anniversary (3 designs) (Scott 5378-5380)



Member of the Lake County (IL) Philatelic Society - founded 1953  
 Website: LCPHS.ORG  
 Lake County Philatelic Society  
 LCPHS

Forever Wild and Scenic Rivers (12 designs) (Scott 5381)  
 Forever Ellsworth Kelly (10 designs) (Scott 5382-5391)  
 Forever USS Missouri (BB63) (Scott 5392)  
 Forever George H.W. Bush Memorial (1924 - 2018) - 41st President (Scott 5393)  
 Forever Sesame Street (16 designs) (Scott 5394)  
 Forever Frogs (4 designs) (DSB) BC324 (Scott 5395-5398)  
 Forever Moon Landing (2 designs) (Scott 5399-5400)  
 Forever State and County Fairs (4 designs) (Scott 5401-5404)  
 Forever Military Working Dogs (4 designs) (Scott 5405-5408)  
 Forever Woodstock (Scott 5409)  
 Forever Tyrannosaurus Rex (4 design) (Scott 5410-5413)  
 Three Ounce Forever Walt Whitman - Literary Arts: 32nd in a series (Scott 5414)  
 Forever Winter Berries (4 designs) (DSB) BC325 (Scott 5415-5418)  
 Forever Purple Heart (Scott 5419)  
 Forever Spooky Silhouettes (4 designs) (Scott 5420-5423)  
 Forever Holiday Wreaths (4 designs) (DSB) BC326 (Scott 5427-5431)



2

The more interesting stamps were the Transcontinental Railroad issue with gold leaf and the Flexo Lenticular processed T.rex issue with two (ones outlined in red) of the stamps showing different images when tilted – like the rabbit-in-the-hat on the magic souvenir sheet issued last year.

One stamp not issued yet (but planned) is the Post Traumatic Stress Disorder (Scott B7) Semipostal.

**Stamp Albums** — To most stamp collectors a **stamp album** is a book, most often loose-leafed (to allow for expansion), in which a collection of postage stamps may be stored and displayed.

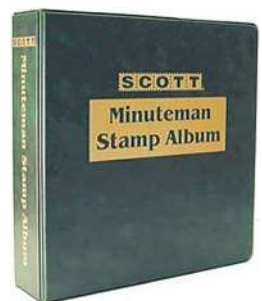
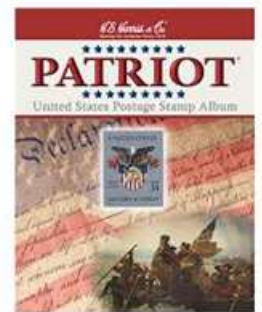
The first (English) albums were published in the early 1870s by Stanley Gibbons - "V.R.". This was followed by the "Improved", and then the illustrated "Imperial" albums. Present-day makers include Safe, Lighthouse (Leuchturn), Lindner, Palo, Scott, and White Ace. Once collectors have started using a particular brand, they have a strong incentive to stay with it, and the manufacturers offer annual updates for the stamps issued during the previous year.

In the earliest albums, stamps were adhered to the pages, using either their own gum (cringe) or glue. Stamp hinges were introduced soon after, allowing stamps to be removed without major damage to either the stamp or the album page.

In the late 1950s, stamp mounts were introduced. Mounts typically hold the stamp between two layers of plastic, with the front layer transparent, and are attached to an album page, allowing the stamp to be displayed without an adhesive touching the stamp. When properly used, mounts allow the stamp to be removed from the album in the same condition in which it was inserted. A further refinement to the stamp album are those in which the mounts are affixed at the factory, either as mounts for individual stamps or as larger strips, is called "hingeless" — and expensive.

Now that we have the internet, collectors can download album pages for almost any collecting fancy – the cost being a printer and a heavier weight paper (non-acidic preferable). Three sites are listed below:

**American Philatelic Society** [<https://stamps.org/stamp-albums>] (free)  
**Stamp Album Web** [<http://www.stampalbums.com/>] (subscription - \$50.00/year)  
**theStampWeb** [<http://www.thestampweb.com/albums.html>] (free)



Old Albums and Stuff