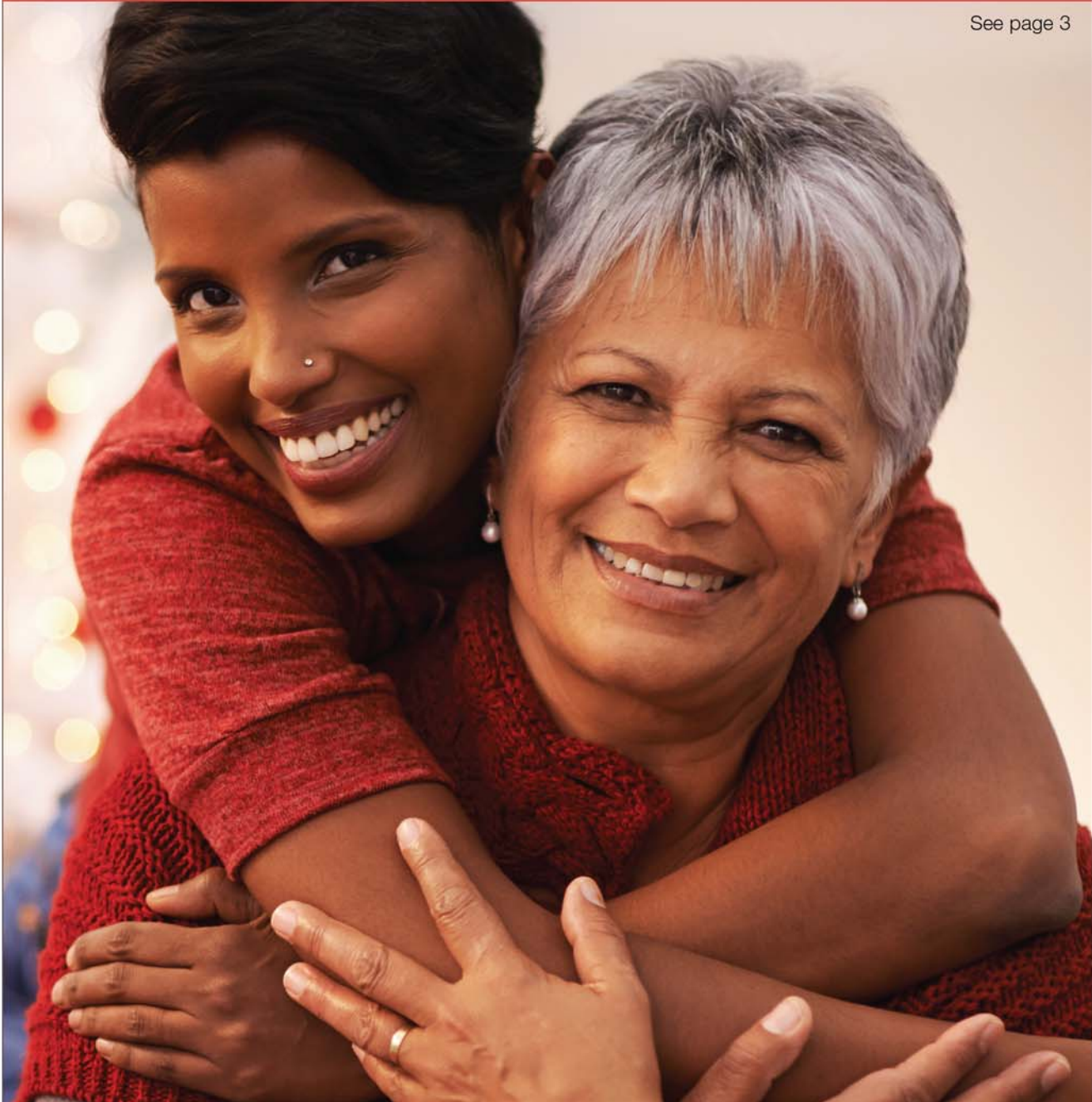


postal|bulletin

PUBLISHED SINCE MARCH 4, 1880

Protect Your Loved Ones From Being Scammed

See page 3



PeopleImages/Stock/Getty Images Plus/Getty Images



Contents

COVER STORY

National Consumer Protection Week is March 5–11, 2017	3
--	---

POLICIES, PROCEDURES, AND FORMS UPDATES

Manuals

ASM Revision: Environmental Compliance Program.	4
DMM Revision: Additional Mailing Standard Changes for Domestic Mailing Services Products.	5
DMM Revision: Full-Service Automation Option	7
DMM Revision: USPS Tracking	7

Publications

Publication 431 Revision: Changes to Post Office Box Service and Caller Service Fee Groups.	8
--	---

Management Instructions

Management Instruction EL-430-2017-1: Back Pay	8
--	---

Forms

PS Form 8038 and PS Form 8039 Revision: Back Pay Compensation Process.	8
---	---

ORGANIZATION INFORMATION

Domestic Mail

Labeling List Changes	9
---------------------------------	---

Finance

Earnings Statement Redesign of Leave Sections	10
---	----

Information Security

Think Before You Click — Avoid Falling Victim to Cyber Threats	12
Stay Alert for Postal Service Cyber Threats	12

Stamp Services

Stamp Announcement 17-16: Pears Stamp	13
Stamp Announcement 17-17: Northern Cardinal Stamped Envelope	35
Prepaid Priority Mail Flat-Rate Stamped Envelope	36
The Stamp Ceremony Memento	37
Update: Stamp Announcement 17-09: Oscar de la Renta Stamp	39
Pictorial Postmarks Announcement	39

How to Order the First-Day-of-Issue Digital Color or Traditional Postmarks	43
---	----

Sustainability

Federal Reporting Requirements on Hazardous and Toxic Chemicals.	47
---	----

PULL-OUT INFORMATION

Fraud

Invalid USPS Corporate Account Numbers.	15
Missing, Lost, or Stolen U.S. Money Order Forms	16
Missing, Lost, or Stolen Canadian Money Order Forms	23
Verifying U.S. Postal Service Money Orders	26
Counterfeit Canadian Money Order Forms	26
Toll-Free Number Available to Verify Canadian Money Orders	26

Other Information

Overseas Military/Diplomatic Mail	27
Thrift Savings Plan Fact Sheet.	32
Freely Associated States (FAS) Restrictions	34

POSTAL BULLETIN INDEX

2016 Semi-Annual Index	PB 22458 (1-5-17)
----------------------------------	-------------------

USPS National Emergency Hotline
Is your facility operating? Call 888-363-7462

**Find the latest in mail and delivery information
and services offered by U.S. Postal™
in the *Postal Bulletin* at**
<http://about.usps.com/postal-bulletin>.

Cover Story

National Consumer Protection Week is March 5–11, 2017

This year, National Consumer Protection Week (NCPW) runs from March 5–11, 2017. NCPW helps consumers by providing information, materials, and services to improve their ability to protect themselves and loved ones from fraud. We encourage Postmasters and facility managers to conduct local activities to support National Consumer Protection Week. Those interested in holding local events may visit the NCPW website at <https://www.ncpw.gov/> to view and print resources for consumer outreach activities, or contact their local Postal Inspector. The online materials will replace the lobby kits mailed to Post Offices™ in the past.

Overview

NCPW is a federal program designed to heighten awareness of fraud and help consumers improve their ability to combat crime. During NCPW, federal, state, and local consumer protection agencies — together with consumer organizations and industry associations — launch consumer protection and education efforts around the country. This year, the Postal Service™ and the Postal Inspection Service are partnering to educate postal employees and the general public about scams to which older Americans are increasingly susceptible. Postal Inspectors want to:

- Increase awareness about age-related vulnerabilities that can lead to financial exploitation.
- Provide valuable information to postal employees and the general public about the need to protect their own assets as they age, and how to help an older loved one do the same.
- Establish a central location where everyone can learn more about helping an older family member or friend who has been taken advantage of — and keep it from happening again.

Anyone can be a victim of a scam, but scammers often target individuals whom they perceive as vulnerable, so older adults tend to be targeted again and again. These crimes take a toll, both financially and emotionally. Financial exploitation can seriously affect the lives of seniors and their families, who are often unaware until it's too late.

Experts say financial decision-making declines in all older adults to one degree or another, even healthy seniors who don't suffer from dementia. Declining decision-making — especially where money is concerned — is increasingly regarded as a natural part of aging. During NCPW, Postal Inspectors will discuss how everyone should plan for the day they need an extra set of eyes on their financial affairs.

The Postal Inspection Service wants postal employees and consumers to learn more about reducing their exposure to fraud and the deceptive marketing practices frequently directed at older Americans. If someone's been victimized by a phony charity or fake prize promotion, Postal Inspectors also offer steps that families and friends can take to keep it from happening again.

Persons who expose themselves to sales situations, even legitimate ones, are more likely to be victimized by fraud. We recommend that consumers of all ages take these actions today:

- Get a non-published number and install an answering machine with a large caller ID display. Screen all incoming calls. Pick up only if you recognize the caller. Otherwise, let the call roll to the answering machine.
- Reduce robocalls and block unwanted telemarketing offers. Visit www.DeliveringTrust.com for details.
- Opt-out of pre-approved credit offers by enrolling in the national credit bureaus' OptOut program. Call (888) 567-8688 or go to www.DeliveringTrust.com and sign up online.
- Never enter free prize and sweepstakes drawings.
- Never attend free lunch seminars.
- Never respond to any solicitation you receive over the Internet.

An educated public is the first line of defense. Visit www.DeliveringTrust.com for more information on how to protect yourself and your loved ones from fraud.

— Criminal Investigations Group,
Postal Inspection Service, 2-16-17

Policies, Procedures, and Forms Updates

Manuals

ASM Revision: Environmental Compliance Program

Effective February 16, 2017, the Postal Service™ is revising the *Administrative Support Manual* (ASM) to update policies related to Fleet Management responsibilities, the role of the corporate-wide information system [Environmental Tool Kit (ETK)], and the distribution of environmental records.

Administrative Support Manual (ASM)

	*	*	*	*	*
6	Support Services				
	*	*	*	*	*
69	Environmental Compliance				
	*	*	*	*	*
694	Environmental Compliance Program				
	*	*	*	*	*

694.4 Records Management

[Add a new last sentence to 694.4 to read as follows:]

***Environmental compliance records, reports, and documents must be maintained electronically in the corporate-wide environmental information system and distributed to internal stakeholders to ensure transparency and compliance.

694.5 Data Management

[Revise the last sentence of 694.5 to read as follows:]

***The system also serves as the mandatory central repository for electronic copies of required environmental compliance records, reports, and documents.

	*	*	*	*	*
695	Responsibilities				
695.1	Headquarters				
	*	*	*	*	*

695.12 Office of Sustainability

[Revise the introductory sentence of 695.12 to read as follows:]

The Office of Sustainability, consisting of teams of specialized staff under direction of the CSO, performs the following environmental compliance and risk management functions:

*	*	*	*	*
---	---	---	---	---

695.14 Facilities Department

[Revise the text of 695.14 to read as follows:]

When managing projects, the Facilities Department performs the following environmental program management functions:

- Maintains the reports and records required by environmental regulations.
- Ensures that the reports, records, and other environmental compliance documents are distributed to the appropriate installation heads and internal stakeholders, including the Corporate Sustainability Office. Copies must be retained in the Facilities Department's project records and the corporate-wide environmental information system.
- Obtains necessary permits and approvals required by environmental regulations.

*	*	*	*	*
---	---	---	---	---

[Revise the title of 695.2 to read as follows:]

695.2 Area Offices, Performance Clusters, and Field Units

[Revise the title, introductory sentence, and item b. to read as follows:]

695.21 Vice Presidents, Area Operations and Vice President, Delivery Operations

The vice presidents for Area Operations and vice president for Delivery Operations perform the following environmental compliance program management functions:

*	*	*	*	*
---	---	---	---	---

- Support the efforts of the Office of Sustainability, area managers of Operations Support, manager, Fleet Management, the district managers, managers, Fleet Operations (Region), and installation heads to ensure that facilities are in compliance with environmental laws and regulations.

*	*	*	*	*
---	---	---	---	---

[Revise the title and introductory sentence of 695.22 to read as follows:]

695.22 Area Managers, Operations Support and Manager, Fleet Management

The area managers of Operations Support and the manager of Fleet Management coordinate with the Office of Sustainability to:

[Delete 695.3, renumber current 695.31 as new 695.23, and revise the title and introductory sentence to read as follows:]

695.23 District Managers and Managers, Fleet Operations (Region)

The district managers and managers, Fleet Operations (Region):

[Renumber current 695.32 and 695.33 as new 695.24 and 695.25. Also renumber current 695.4 as new 695.3.]

* * * * *

We will incorporate these revisions into the next online update of the *Administrative Support Manual (ASM)*, which is available on the Postal Service PolicyNet website:

- Go to <http://blue.usps.gov>.
- In the left-hand column, under “Essential Links,” click *PolicyNet*.
- Click *Manuals*.

The direct URL for the Postal Service PolicyNet website is <http://blue.usps.gov/cpim>.

— Chief Sustainability Officer,
Deputy Postmaster General, 2-16-17

DMM Revision: Additional Mailing Standard Changes for Domestic Mailing Services Products

Effective March 6, 2017, the Postal Service™ will revise *Mailing Standards of the United States Postal Service*, Domestic Mail Manual (DMM®) in various related sections to reflect changes to mailing standards that were missed in the final rule published in the *Federal Register* on December 21, 2016.

Mailing Standards of the United States Postal Service, Domestic Mail Manual (DMM)

* * * * *

200 Commercial Mail Letters, Cards, Flats, and Parcels

* * * * *

230 First-Class Mail

* * * * *

235 Mail Preparation

* * * * *

5.0 Preparing Nonautomation Letters

* * * * *

5.2 Machinable Preparation

5.2.1 Machinable Bundling

[Revise the text of item b. to read as follows:]

* * * * *

- b. All pieces in a less-than-full origin tray.

5.2.2 Traying and Labeling

[Revise the text of item a. to read as follows:]

- a. AADC origin trays required, with pieces grouped by 3-digit ZIP Code prefix; no minimum piece requirement; one less-than-full tray permitted; labeling:

1. Line 1: 801
2. Line 2: “FCM LTR AADC MACH.”

240 Commercial Mail USPS Marketing Mail

* * * * *

243 Prices and Eligibility

* * * * *

3.0 Basic Eligibility Standards for USPS Marketing Mail

* * * * *

3.2 Defining Characteristics

3.2.1 Mailpiece Weight

[Revise the text of item a. to read as follows:]

* * * * *

- a. Pieces mailed at machinable letter prices may weigh up to 3.5 ounces. Letter-size pieces weighing more than 3.5 ounces are mailable at nonmachinable letter prices. For saturation and high density letters over 3.5 ounces, see 3.2.1b

* * * * *

4.0 Price Eligibility for USPS Marketing Mail

* * * * *

4.2 Minimum Per Piece Prices

[Revise the text of item a. to read as follows:]

- a. Basic Requirement. Automation and automation-compatible letters mailed at Regular, Enhanced Carrier Route, Nonprofit, and Nonprofit Enhanced Carrier Route prices are subject to minimum per piece prices when they weigh no more than 3.5 ounces (0.2188 pound). Nonautomation letters and flats mailed at Regular, Enhanced Carrier Route, Nonprofit, and Nonprofit Enhanced Carrier Route prices are subject to minimum per piece prices when they weigh no more than 4 ounces (0.25 pound).

* * * * *

4.3 Piece/Pound Prices

[Revise the text of 4.3 to read as follows:]

Letters that exceed 3.5 ounces (0.2188 pound) are subject to a two-part piece/pound price that includes a fixed charge per piece and a variable pound charge based on weight. Flats that exceed 4 ounces are subject to a two-part piece/pound price that includes a fixed charge per piece and a variable pound charge based on weight.

* * * * *

5.0 Additional Eligibility Standards for Nonautomation USPS Marketing Mail Letters, Flats, and Presorted USPS Marketing Mail Parcels

* * * * *

5.4 Machinable Price Application — Letters

* * * * *

5.4.1 AADC Price

[Revise the text of 5.4.1 to read as follows:]

The AADC price applies to qualifying letter-size machinable pieces (see 201.1.0) placed in origin/entry AADC trays (regardless of quantity), to quantities of 150 or more pieces prepared in AADC trays for a single AADC, and to pieces placed in mixed AADC trays in lieu of overflow AADC trays.

* * * * *

246 Enter and Deposit

* * * * *

4.0 Destination Sectional Center Facility (DSCF) Entry

* * * * *

4.2 Eligibility**4.2.1 Letters**

* * * * *

[Revise the text of item a. to read as follows:]

- a. When deposited at a DSCF or USPS-designated facility, and either:
 1. Placed in a tray labeled to a destination within the SCF's service area, when all pieces in the tray are addressed for delivery within that SCF's service area.
 2. Placed in an ADC or AADC tray labeled to a destination within the SCF's service area, regardless of whether all pieces in the tray are addressed for delivery within that SCF's service area.

* * * * *

700 Special Standards

* * * * *

708 Technical Specifications

* * * * *

1.0 Standardized Documentation for First-Class Mail, Periodicals, USPS Marketing Mail, and Flat-Size Bound Printed Matter

* * * * *

1.3 Price Level Column Headings

[Revise the text of items a. and b. to read as follows:]

* * * * *

- a. Automation First-Class Mail, USPS Marketing Mail, and barcoded Periodicals:

PRICE	ABBREVIATION
[Delete FSS [Periodicals flats, USPS Marketing Mail flats]]	[Delete SB]

- b. Presorted First-Class Mail, barcoded and nonbarcoded Periodicals flats, nonbarcoded Periodicals letters, and machinable and nonmachinable USPS Marketing Mail:

PRICE	ABBREVIATION
* * * * *	* * * * *
[Delete FSS [Periodicals flats, USPS Marketing Mail flats]]	[Delete SD]
* * * * *	* * * * *

[Revise the text of 1.4 to read as follows:]

1.4 Sortation Level

The actual sortation level (or corresponding abbreviation) is used for the bundle, tray, sack, or pallet levels required by 1.2 and shown below:

SORTATION LEVEL	ABBREVIATION
* * * * *	* * * * *
[Delete FSS Scheme [bundle, tray, sack, or other approved container, Periodicals flats, USPS Marketing Mail flats, Bound Printed Matter flats]]	[Delete FSS]
* * * * *	* * * * *
[Delete FSS Facility]	[Delete FSF]
* * * * *	* * * * *

We will incorporate these revisions into the next update of the online DMM, which is available via Postal Explorer® at <http://pe.usps.com>.

— Product Classification, Marketing, 2-16-17

DMM Revision: Full-Service Automation Option

Effective March 6, 2017, the Postal Service™ will revise *Mailing Standards of the United States Postal Service*, Domestic Mail Manual (DMM®), section 705.23.0, Full-Service Automation Option, to provide new Publication 6850, *Publication for Streamlined Mail Acceptance for Letters and Flats* (available on PostalPro at <http://postalpro.usps.com>), as a reference for the full-service automation option, which includes verification and assessment criteria.

Although this revision will not be published in the DMM until March 6, 2017, this revision is effective immediately.

Mailing Standards of the United States Postal Service, Domestic Mail Manual (DMM)

* * * * *

700 Advanced Preparation and Special Postage Payment Systems

* * * * *

23.0 Full-Service Automation Option

23.1 Description

[Revise the second sentence of 23.1 to read as follows:]

***Additional information on the full-service automation option, including verification and assessment criteria, is available on PostalPro at <http://postalpro.usps.com>.

* * * * *

We will incorporate this revision into the next update of the online DMM, which is available via Postal Explorer® at <http://pe.usps.com>.

— Product Classification, Marketing, 2-16-17

DMM Revision: USPS Tracking

Effective March 6, 2017, the Postal Service™ will revise *Mailing Standards of the United States Postal Service*, Domestic Mail Manual (DMM®), part 503, to clarify USPS Tracking® eligibility.

Except for Periodicals, USPS Tracking is available for all products, some with restrictions. Currently, the DMM does not address the restriction that applies to First-Class Mail®. For First-Class Mail, only parcels are eligible for USPS Tracking. This revision will update Exhibit 503.1.4.1, Eligibility — Domestic Mail, and section 503.7.0, USPS Tracking, to add that for First-Class Mail, only parcels are eligible for USPS Tracking.

Although this revision will not be published in the DMM until March 6, 2017, these standards are effective immediately.

Mailing Standards of the United States Postal Service, Domestic Mail Manual (DMM)

* * * * *

500 Additional Mailing Services

* * * * *

503 Extra and Additional Services

* * * * *

1.0 Basic Standards for All Extra Services

* * * * *

1.4 Eligibility for Extra Services

* * * * *

1.4.1 Eligibility — Domestic Mail

* * * * *

Exhibit 1.4.1 Eligibility — Domestic Mail

* * * * *

USPS Tracking

[Under the “Extra Service” column, revise the parenthetical under “USPS Tracking” to read as follows:]

(Except for Periodicals, USPS Tracking is available for all products, though restrictions may apply. USPS Tracking is provided at no additional charge except for USPS Marketing Mail.)

* * * * *

[Under the “Eligible Mail” column, revise the text for “USPS Tracking” to read as follows:]

First-Class Mail²

USPS Marketing Mail^{1, 2}

(electronic option only)

* * * * *

7.0 USPS Tracking

7.1 Basic Standards

* * * * *

7.1.3 Additional Physical Standards

[Revise the first sentence in the introductory text of 7.1.3 to read as follows:]

In addition to the applicable standards in 101, 201, and 7.1.3 for mail that is eligible for USPS Tracking under 1.4.1,

all mailpieces must be large enough to hold the required delivery address, return address, mailing labels, postage, barcode, endorsements, and other mail markings on the address side of the mailpiece.***

* * * * *

We will incorporate these revisions into the next online update of the DMM, which is available via Postal Explorer® at <http://pe.usps.com>.

— *Product Classification, Marketing, 2-16-17*

Publications

Publication 431 Revision: Changes to Post Office Box Service and Caller Service Fee Groups

Effective February 16, 2017, Publication 431, *Post Office Box Service and Caller Service Fee Groups*, is revised to include the following changes.

Publication 431, Post Office Box Service and Caller Service Fee Groups

[Delete the following entries:]

ZIP Code	Fee Group
72519C	6

* * * * *

The online version of Publication 431 is dated July 2013. Publication 431 is currently available on the Postal Service™ PolicyNet website (<http://blue.usps.gov/cpim>):

- Go to <http://blue.usps.gov>.

- In the left-hand column, under “Essential Links,” click *PolicyNet*.
- Click *PUBs*.

Offices with WebBATS Manager/Supervisor access can view current Publication 431 information by going to the WebBATS Edit Facility Information page, as follows:

1. Go to the WebBATS main menu, and select Utility> Facility>Edit Facility option.
2. View the Fee Group field on the Edit Facility Information page.

— *Retail Operations,
Retail and Customer Service Operations, 2-16-17*

Management Instructions

Management Instruction EL-430-2017-1: Back Pay

Effective February 16, 2017, the Postal Service™ is issuing Management Instruction (MI) EL-430-2017-1, *Back Pay*, to update policy and procedures for the back pay compensation process. The document provides:

- A brief overview of the back pay compensation process,
- Information about organizational responsibilities, and
- The procedures for processing a claim.

Once posted, the MI EL-430-2017-1 will supersede all previous management instructions for the back pay com-

pensation process on the Postal Service PolicyNet website:

- Go to <http://blue.usps.gov>.
- In the left-hand column, under “Essential Links,” click *PolicyNet*.
- Click *MI*s.

The direct URL for the Postal Service PolicyNet website is <http://blue.usps.gov/cpim>.

— *Pay and Performance Programs,
Human Resources, 2-16-17*

Forms

PS Form 8038 and PS Form 8039 Revision: Back Pay Compensation Process

Effective February 16, 2017, the Postal Service™ is revising PS Form 8038, *Employee Statement to Recover Back Pay*, and PS Form 8039, *Back Pay Decision/Settlement Worksheet* to update policy and procedures for the back pay compensation process.

Revised PS Forms 8038 and 8039 are both available on the Postal Service PolicyNet website:

- Go to <http://blue.usps.gov>.

- In the left-hand column, under “Essential Links,” click *PolicyNet*.
- Click *Forms*.

The direct URL for the Postal Service PolicyNet website is <http://blue.usps.gov/cpim>.

— *Pay and Performance Programs,
Human Resources, 2-16-17*

Organization Information

Domestic Mail

Labeling List Changes

Effective March 1, 2017, we are revising Labeling List(s) L001, L012, and L606 to reflect changes in mail processing operations. Mailers are expected to label according to these revised lists for mailings that are inducted on or after the March 1, 2017, effective date, through the April 30, 2017, expiration date.

Labeling Lists

L000 General Use

* * * * *

L001 5-Digit Scheme — Periodicals, Standard Mail, and Package Services Flats and Irregular Parcels

* * * * *

Newly Added

Column A Destination ZIP Codes	Column B Label Container To (Added To)	Column B Status
21647	NEWCOMB MD 21653	New
21653	NEWCOMB MD 21653	New

* * * * *

L012 5-Digit ZIP Scheme Combination Changes

Column A Destination ZIP Codes	Column B Label Container To (Change From)	Column B Label Container To (Change To)	Column B Change To Status
06801	REDDING CT 06896	DANBURY CT 06810	Existing
06804	REDDING C T 06896	NEW FAIRFIELD CT 06812	Existing
06829	REDDING CT 06896	WILTON CT 06897	Existing
06896	REDDING CT 06896	WILTON CT 06897	Existing
21607	BARCLAY MD 21607	CHURCH HILL MD 21623	New
21612	BARCLAY MD 21607	ROYAL OAK MD 21662	New
21623	BARCLAY MD 21607	CHURCH HILL MD 21623	New
21635	BARCLAY MD 21607	CHURCH HILL MD 21623	New
21638	BARCLAY MD 21607	ROYAL OAK MD 21662	New
21645	BARCLAY MD 21607	CHURCH HILL MD 21623	New
21647	BARCLAY MD 21607	ROYAL OAK MD 21662	New
21651	BARCLAY MD 21607	CHURCH HILL MD 21623	New
21658	BARCLAY MD 21607	ROYAL OAK MD 21662	New

Column A Destination ZIP Codes	Column B Label Container To (Change From)	Column B Label Container To (Change To)	Column B Change To Status
21662	BARCLAY MD 21607	ROYAL OAK MD 21662	New
21663	BARCLAY MD 21607	ROYAL OAK MD 21662	New
21665	BARCLAY MD 21607	ROYAL OAK MD 21662	New
21668	BARCLAY MD 21607	CHURCH HILL MD 21623	New
21671	BARCLAY MD 21607	ROYAL OAK MD 21662	New
21676	BARCLAY MD 21607	ROYAL OAK MD 21662	New
65438	BIRCHTREE MO 65438	BIRCH TREE MO 65438	New
65444	BIRCHTREE MO 65438	BIRCH TREE MO 65438	New
65464	BIRCHTREE MO 65438	BIRCH TREE MO 65438	New
65466	BIRCHTREE MO 65438	BIRCH TREE MO 65438	New
65468	BIRCHTREE MO 65438	BIRCH TREE MO 65438	New
65479	BIRCHTREE MO 65438	BIRCH TREE MO 65438	New
65483	BIRCHTREE MO 65438	BIRCH TREE MO 65438	New
65484	BIRCHTREE MO 65438	BIRCH TREE MO 65438	New
65546	BIRCHTREE MO 65438	BIRCH TREE MO 65438	New
65548	BIRCHTREE MO 65438	BIRCH TREE MO 65438	New
65555	BIRCHTREE MO 65438	BIRCH TREE MO 65438	New
65564	BIRCHTREE MO 65438	BIRCH TREE MO 65438	New
65570	BIRCHTREE MO 65438	BIRCH TREE MO 65438	New
65571	BIRCHTREE MO 65438	BIRCH TREE MO 65438	New
65588	BIRCHTREE MO 65438	BIRCH TREE MO 65438	New
65589	BIRCHTREE MO 65438	BIRCH TREE MO 65438	New

Newly Added

Column A Destination ZIP Codes	Column B Label Container To (Added To)	Column B Status
06875	WILTON CT 06897	Existing
06876	WILTON CT 06897	Existing
60402	BERWYN IL 60402	New
60501	BERWYN IL 60402	New
60534	BERWYN IL 60402	New
60585	JOLIET IL 60431	Existing

Deleted

Column A Destination ZIP Codes	Column B Label (Deleted From)
29510	MYRTLE BEACH SC 29577
29511	DILLON SC 29536
29512	BENNETTSVILLE SC 29512
29526	CONWAY SC 29526
29527	CONWAY SC 29526
29528	CONWAY SC 29526
29532	BENNETTSVILLE SC 29512
29536	DILLON SC 29536
29540	BENNETTSVILLE SC 29512
29541	KINGSTREE SC 29556
29544	LORIS SC 29569
29550	HARTSVILLE SC 29550
29551	HARTSVILLE SC 29550
29554	DILLON SC 29536
29556	KINGSTREE SC 29556
29560	KINGSTREE SC 29556
29565	DILLON SC 29536
29566	LORIS SC 29569
29568	NORTH MYRTLE BEACH SC 29582
29569	LORIS SC 29569
29570	BENNETTSVILLE SC 29512
29571	DILLON SC 29536
29572	MYRTLE BEACH SC 29588
29574	LORIS SC 29569
29575	MYRTLE BEACH SC 29575
29576	MURRELLS INLET SC 29576
29577	MYRTLE BEACH SC 29577
29579	MYRTLE BEACH SC 29575
29582	NORTH MYRTLE BEACH SC 29582
29584	HARTSVILLE SC 29550
29585	MURRELLS INLET SC 29576
29588	MYRTLE BEACH SC 29588
29593	HARTSVILLE SC 29550
29596	HARTSVILLE SC 29550
29597	NORTH MYRTLE BEACH SC 29582
29598	NORTH MYRTLE BEACH SC 29582
*	*

L606 5-Digit Scheme — Standard Mail, First-Class Mail, and Package Services Parcels

* * * *

Newly Added

Column A Destination ZIP Codes	Column B Label Container To (Added To)	Column B Status
32224	ATLANTIC BEACH FL 32233	New
32227	ATLANTIC BEACH FL 32233	New
32233	ATLANTIC BEACH FL 32233	New
32266	ATLANTIC BEACH FL 32233	New

Deleted

Column A Destination ZIP Codes	Column B Label (Deleted From)
02050	MARSHFIELD MA 02050
02065	MARSHFIELD MA 02050
90292	VENICE CA 90292
90293	VENICE CA 90292
92604	IRVINE CA 92604
92606	IRVINE CA 92604
92614	IRVINE CA 92614
92623	IRVINE CA 92614

— *Logistics, Network Development, and Support,
Network Operations, 2-16-17*

Finance

Earnings Statement Redesign of Leave Sections

We revised PS Form 1223-B, *Earnings Statement* (known as PayStub), to provide additional information on the leave data. We intend for the changes to:

- Improve communication about earned annual leave (AL) balance.
- Better align the information on the paystub or pay-check with the leave information that is already available to employees using *ePayroll*.
- Enable employees to better plan for the use of leave or to calculate Terminal Leave (the payment to employee for earned AL when separating or retiring).

At the beginning of every leave year (LY), full- and part-time regular employees are advanced their annual leave

hours for the entire year. These hours become earned as employees continue to work through the end of the leave year.

The leave year starts at the first full pay period (PP) of the year. This means that the first and last work day of the pay period is in the new calendar year. For 2017, this is pay period 2.

Leave data on the pay stub represents hours, unless you are a rural carrier. Annual leave and sick leave are expressed as days for rural employees.

Here is a comparison of old and revised Leave sections of PS Form 1223-B, *Earnings Statement*, as of pay period 5-2017.

Old		
ANNUAL LEAVE		
FROM PREV YR		104.28
EARNED	THIS YEAR	32.00
	BAL	136.28
USED THIS	YR	62.50
	PP	8.00
BALANCE		249.78
SICK LEAVE		
FROM PREV YR		502.61
EARNED THIS YR		16.00
USED THIS	YR	8.00
	PP	8.00
BALANCE		510.61
LEAVE WITHOUT PAY		
THIS PP		0.00
CUMMULATIVE		24.00

Revised	
ANNUAL LEAVE (AL) CAT: 8.00	
AL PRIOR YR BAL	104.28
+ AL EARNED YTD	32.00
+ AL HOL EARNED YTD	0.00
- AL USED YTD	62.50
= EARNED AL BAL	73.78
+ AL ADVANCED	176.00
= AVAIL AL BAL	249.78
AL USED THIS PP	8.00
SICK LEAVE (SL) CAT: 4.00	
SL PRIOR YR BAL	502.61
+ SL EARNED YTD	16.00
- SL USED YTD	8.00
= CURRENT SL BAL	510.61
SL USED THIS PP	8.00
LEAVE WITHOUT PAY (LWOP)	
PAY PERIOD LWOP	0.00
PP01 TO CURRENT PP	24.00

The “Old” and “Revised” tables in this article show the paystub of an employee who has annual leave, category 8. Eight hours are earned for each working pay period:

Type of Leave	Hours
Annual leave carried over from 2016	104.28
+ Annual leave earned from pay period 2 to pay period 5 (4 periods x 8 hours = 32)	+32.00
+ Holiday hours worked. Exchanged for annual leave in 2017	+0.00
- 62.50 hours of annual leave used in the last four pay periods	- 62.50
= Earned annual leave balance	73.78
Earned annual leave balance from previous table	73.78
+ Advanced annual leave (22 pay periods x 8 hours = 176.00)	+176.00
= Available annual leave balance	249.78

For sick leave, category 4, four hours are earned for each working pay period:

Type of Leave	Hours
Sick leave carried over from 2016	502.61
+ Sick leave earned (YTD) from pay period 2 to pay period 5 (4 periods x 4 hours = 16)	+16.00
- Sick leave hours used (YTD) from pay period 2 to pay period 5	-8.00
= Current sick leave balance	510.61

The individual field names are prefixed with +, -, and = symbols to better explain how the annual leave balances are calculated.

Other leave balances (e.g. advanced sick leave, donated leave, and military leave) continue to be displayed as a single line message at the bottom right of the earnings statement (e.g. DONATED LV BAL = 16.00 hours).

If you have any questions or problems with how you have been paid or with the information that is on your earnings statement, talk to your immediate supervisor or manager. If you need further assistance, call the Accounting Help Desk at 866-974-2733 (7:00 A.M. – 7:00 P.M., Monday – Friday, CST) or send an email to helpdeskaccounting-st.louis@usps.gov.

You are encouraged to view your online earnings statements. Use your USPS® Employee Identification Number and Password to log into the *ePayroll* App via *LiteBlue* (www.liteblue.gov).

The *ePayroll* option provides many advantages over the hard copy earnings statement:

- Your online statements will be available as soon as your pay record has been processed; you don't have to wait for the hard copy to arrive by mail.
- Your online statements are available for the past 40 pay periods.
- Your online statements provide much greater detail about withholdings, benefit deductions, leave balances, and adjustments. This is an improvement from what was provided on the limited space of the traditional hard copy earnings statement.
- *ePayroll* provides a guide to understanding your earnings statement as well as answers to frequently asked questions.

Information Security

Think Before You Click — Avoid Falling Victim to Cyber Threats

Do you think before you click? In today's cyber landscape, it only takes one click to expose the Postal Service™ networks to cyber attacks. Hackers use a variety of techniques to execute fraudulent activities, such as phishing emails, fake websites, and fraudulent text messages.

To protect yourself and the Postal Service from potential cyber threats, do the following when you receive a message via email, text message, or otherwise.

- **Analyze the content.** Check for incorrect grammar, spelling errors, generic salutations, and requests for account information, such as login credentials or payment information. Never click on a suspicious looking link or attachment, or visit an unknown website.
- **Check the sender.** Confirm the message is from a reliable source before taking any action. Be wary of messages from unknown senders, especially those with suspicious-looking attachments or links or requests for sensitive information. This applies to both emails and text messages. Even if you know the sender, check for anything suspicious, including the email address or phone number used to contact you. Hackers may try to impersonate someone you know, such as your bank, a department within your organization (IT is a common one), or even a friend or colleague.

- **Report suspicious activity.** If you see something suspicious, say something. Even if you aren't sure if you've become the victim of a cyber threat, report any suspicious activity encountered on Postal Service equipment or networks to the CyberSecurity Operations Center (CSOC) by emailing CyberSafe@usps.gov. If using a personal device, contact your manufacturer's IT Department for further guidance. Depending on the nature of the situation, you may also want to contact the Federal Trade Commission (FTC) and/or your local police department. Never respond to or engage with a suspected hacker.

Remember, cyber threats are everywhere. Stay vigilant when you're online or using an electronic device, and familiarize yourself with the common warning signs of cyber threats to keep yourself "CyberSafe."

For additional information on reporting cyber threats, check out the new public-facing CyberSafe at USPS™ website at www.usps.com/cybersafe or the CyberSafe at USPS pages on *Blue* (<https://blue.usps.gov/cyber/>) and *LiteBlue* (<https://liteblue.usps.gov/cyber/>).

— Corporate Information Security Office,
Chief Information Security Officer
and Digital Solutions, 2-16-17

Stay Alert for Postal Service Cyber Threats

Cyber threats are on the rise everywhere and are expected to continue growing in number. Although we can't eliminate cyber threats altogether, we can take steps to actively protect Postal Service™ information. Here are some guidelines to guard against potential cyber threats:

- **Set strong passwords.** Make sure your passwords are unique and easy to remember, such as a phrase or a short sentence that includes numbers and/or special characters. For example, take the phrase "Be CyberSafe" and turn it into "B3_Cyb3rS*f3." To differentiate across multiple accounts, add a unique identifier, such as "w0^K" for your work account, or "M0b!13" for your mobile account.

Remember: The Postal Service requires you to create a password that is at least 15 characters long and includes three of the following: (1) uppercase letters, (2) lowercase letters, (3) numbers, or (4) special characters.

- **Never plug personal devices into Postal Service equipment.** Plugging in any personal device into Postal Service equipment is strictly prohibited. This applies even if you are not connected to the Postal Service Intranet or Wi-Fi. Never plug in cell phones, tablets, fitness trackers, and other Wi-Fi and Bluetooth-enabled devices, or devices that use a USB cable. Similarly, never plug USPS-issued devices into your home computer or other devices.

Remember: If you need to charge a device, always use an outlet in an approved area.

- **Check all links and attachments carefully before opening them.** Always think carefully before clicking on links, opening attachments, or downloading files or apps, especially those sent by an unknown sender or entity. Additionally, be wary of emails that ask you for personal information, such as account or payment information. This could be a phishing attempt to obtain access to USPS® data, or even your own personal data.

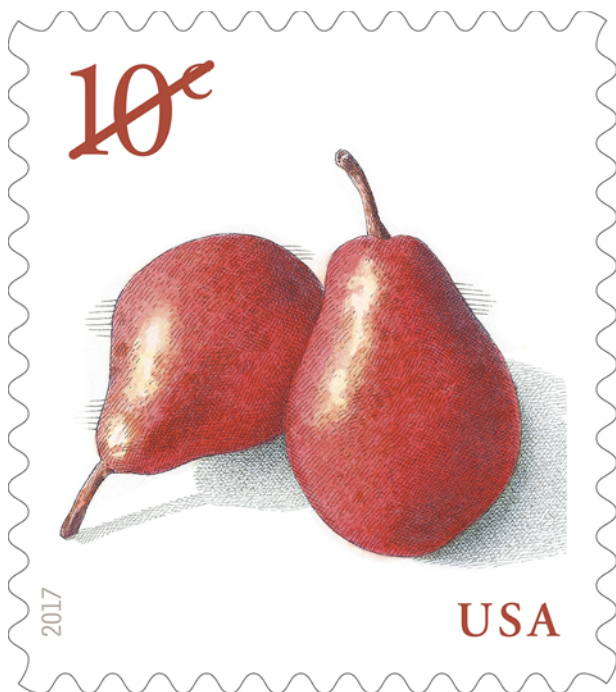
Remember: Do not open emails from someone you don't know. Even if you do know the sender, check the email carefully — hackers may try to impersonate a person or organization that you know to obtain sensitive information.

It is our shared responsibility to protect Postal Service systems and networks. Report suspicious activity to the CyberSecurity Operations Center at CyberSafe@usps.gov. For additional information on reporting cyber threats, check out the new public-facing CyberSafe at USPS™ website at www.usps.com/cybersafe or the CyberSafe at USPS pages on *Blue* (<https://blue.usps.gov/cyber/>) and *LiteBlue* (<https://liteblue.usps.gov/cyber/>).

— Corporate Information Security Office,
Chief Information Security Officer
and Digital Solutions, 2-16-17

Stamp Services

Stamp Announcement 17-16: Pears Stamp



© 2015 USPS

On March 23, 2017, in Cleveland, OH, the U.S. Postal Service® will issue the 10-cent denominated *Pears* stamp, in one design, in a pressure-sensitive adhesive (PSA) pane of 20 stamps (Item 111500). The stamp will go on sale nationwide March 23, 2017.

Originally issued in 2016 in a coil format, *Pears*, a 10-cent definitive stamp featuring two red pears on a white background, is being offered in 2017, in panes of 20. The stamp art is an existing illustration by John Burgoyne, who created the original artwork with pen and ink and watercolor. Art director Derry Noyes designed the stamp.

Availability to Post Offices: Item 111500 10-cent Pears, PSA Pane of 20 Stamps

Stamp Fulfillment Services will not make an automatic push distribution to Post Offices™. Post Offices may begin ordering stamps before the first-day-of-issue (FDOI) through SFS Web.

How to Order the First-Day-of-Issue Postmark

Customers have 60 days to obtain the first-day-of-issue postmark by mail. Each cover must have sufficient postage to meet First-Class Mail® requirements. They may purchase new stamps at their local Post Office, at The Postal Store® website at <http://www.usps.com/shop>, or by calling 800-782-6724. Customers must affix the stamps to envelopes of their choice, address the envelopes (to themselves or others), and place them in a larger envelope addressed to:

FDOI – Pears Stamp
USPS Stamp Fulfillment Services
8300 NE Underground Drive, Suite 300
Kansas City, MO 64144-9900

After applying the first-day-of-issue postmark, the Postal Service™ will return the envelopes through the mail. There is no charge for the postmark up to a quantity of 50. There is a 5-cent charge for each additional postmark over 50. All orders must be postmarked by May 23, 2017.

How to Order First-Day Covers

The Postal Service also offers first-day covers for new stamp issues and Postal Service stationery items postmarked with the official first-day-of-issue cancellation. Each item has an individual catalog number and is offered in the quarterly *USA Philatelic* catalog, online at www.usps.com/shop, or by calling 800-782-6724. Customers may request a free catalog by calling 800-782-6724 or writing to:

U.S. Postal Service
Catalog Request
PO Box 219014
Kansas City, MO 64121-9014

Philatelic Products

There is one philatelic product for this stamp issue:

- 111516*, First-Day Cover, \$1.03.

Items with an asterisk (*) will use the 128 barcode from Stamp Fulfillment Services. All other philatelic products will continue to use barcode series A, with the exception of the Yearbook and the Guide Book.

Issue:	<i>Pears</i> Stamp
Item Number:	111500
Denomination & Type of Issue:	10-cent Denominated, Mail Use
Format:	Pane of 20 (1 design)
Series:	N/A
Issue Date & City:	March 23, 2017, Cleveland, OH 44101
Designer:	Derry Noyes, Washington, DC
Art Director:	Derry Noyes, Washington, DC
Typographer:	Derry Noyes, Washington, DC
Existing Art:	John Burgoyne, West Barnstable, MA
Modeler:	Sandra Lane/Michelle Finn
Manufacturing Process:	Offset, Microprint - USPS
Printer:	Banknote Corporation of America
Printed at:	Browns Summit, NC
Press Type:	Alprinta 74
Stamps per Pane:	20
Print Quantity:	150,000,000 stamps
Paper Type:	Phosphor Tagged Paper, Overall
Adhesive Type:	Pressure-sensitive
Processed at:	Banknote Corporation of America, Browns Summit SC
Colors:	Warm Gray 4/Gray, PMS 7619 Red, Cyan, Magenta, Yellow, Black
Stamp Orientation:	Vertical
Image Area (w x h):	0.73 x 0.84 in./18.54 x 21.34 mm
Overall Size (w x h):	0.87 x 0.98 in./21.10 x 24.89 mm
Full Pane Size (w x h):	5.30 x 4.88 in./134.62 x 123.95 mm
Plate Size:	400 stamps per revolution
Plate Numbers:	"B" followed by six (6) single digits
Marginal Markings:	
Front:	Plate numbers in four corners of pane
Back:	© 2015 USPS • USPS logo • Plate position diagram • Barcode (111500) in upper right and lower left corners of pane • Promotional text

— *Stamp Services, Marketing, 2-16-17*

Pull-Out Information

Fraud

Invalid USPS Corporate Account Numbers

Please provide this listing to Contract Postal Units and acceptance clerks in non-POS locations without intranet access to validate a USPS Corporate Account (USPSCA) number online. For all other locations, online USPSCA validation is preferred. The online validation process is outlined in the USPSCA Validation SOP on the Retail webpage. This list supersedes all previous notices, which

must be recycled. Acceptance clerks must not accept Priority Mail Express™ shipments bearing an invalid USPSCA number in the “Payment by Account” or “Agreement Number” section of the label or form.

Note: The first 6 digits of a 9-digit Custom Designed Service and Next Day Pickup Agreement make up the Corporate Account Number.

006788	045013	100965	180121	331627	452624	606113	730570	787191	847011	901994	926370	947254
007167	060062	101157	191243	333046	454750	616133	730746	787193	847028	903388	926518	948482
007263	060105	103512	192940	333406	458140	622013	735002	797027	871092	903719	926597	948558
008077	060106	105528	196071	333838	460119	627066	740485	799289	871570	904349	926619	951196
008118	060373	106230	206531	335119	460163	628103	740921	799304	874003	904480	926749	958125
008122	062010	108045	207481	335144	461007	631031	741010	799308	890206	906336	927261	967019
008187	062070	108316	208492	336305	461115	631943	741161	799309	891610	907577	927274	968222
008291	065939	109305	208766	336613	461118	631974	741975	799311	891611	915725	927311	968533
008928	066430	109995	208912	337146	461127	641233	744025	800543	891744	917236	927409	971138
009077	068026	112143	210104	339642	461128	641400	750010	801107	891999	917292	927570	980324
009173	068093	115099	210154	340121	461131	665125	750485	801183	895897	917378	928342	982182
009341	068197	115399	210639	346011	461135	666001	752031	801296	898043	917605	928419	992548
009353	068447	117009	220497	349109	461160	666008	765631	801492	900019	917612	928558	992582
009427	068599	117697	220498	370088	461170	666011	767589	801507	900073	917624	928645	995006
011175	070255	117946	221201	371140	462030	671010	774079	802051	900083	917639	928771	995302
015012	070948	117957	240046	372029	462060	672004	776019	802322	900102	918180	928866	995513
015579	071216	119286	272177	372105	462421	672011	780154	802360	900187	920098	930035	997103
018002	071319	120343	275051	372588	462927	672024	782158	802371	900197	920189	930058	997130
018167	073002	129960	281150	372745	463097	672041	782160	804029	900219	920195	931906	998001
018994	073010	130015	281161	379532	466110	672043	782163	805249	900235	920234	932758	998033
019213	073025	130910	282852	379546	468560	672060	782164	805618	900283	920240	933137	998120
019516	075425	130915	300793	381681	474075	672250	782165	806207	900317	921163	933332	
019519	075961	134070	305018	402002	480324	672287	782166	816145	900385	925243	933495	
019829	076454	142058	306208	402219	480671	672294	782924	832049	900418	926031	937720	
020531	076743	142537	311205	402378	481240	672475	785001	837182	900426	926032	939120	
020572	077033	146132	327335	427013	481261	674001	785560	840053	900500	926043	941018	
020627	080709	146142	328433	432910	481336	676635	785763	840059	900540	926050	941950	
020635	085513	146307	328656	436482	531803	681021	785764	841347	900853	926126	943002	
026550	089716	146485	329681	436483	532016	681342	786045	841358	901023	926196	945756	
029255	100391	173080	331340	444854	551940	730028	786125	841730	901223	926198	945793	
030500	100751	175055	331418	445034	558097	730122	787172	844007	901227	926225	945907	
034021	100955	179031	331618	451051	601431	730176	787183	846073	901245	926362	946547	

Missing, Lost, or Stolen U.S. Money Order Forms

Do Not Cash — Upon Receipt, Notify Local Postal Inspectors

This listing will be provided to all Postal Service™ employees responsible for accepting and cashing postal money orders. Destroy all interim notices when the num-

bers listed appear in the *Postal Bulletin*. The actual serial numbers consist of the first 10 digits on the money orders. Check for altered dollar amounts by holding money orders to the light.

010 001 0200 to 0299	037 312 7500 to 7599	066 845 7500 to 9999	095 076 8300 to 8399
010 504 1932 to 1999	037 706 9578 to 9599	067 093 3869 to 3899	095 354 6864 to 6899
011 582 1889 to 1899	037 805 3677 to 3699	068 895 0334 to 0399	097 224 1350 to 1599
011 588 2900 to 3099	037 909 5490 to 5499	070 724 4488 to 4499	100 160 3800 to 3899
012 441 0784 to 0799	037 931 4660 to 4699	070 841 9181 to 9199	104 667 6400 to 6499
012 579 5675 to 5699	039 145 6521 to 6595	070 844 2546 to 2599	104 876 8937 to 8999
013 289 6176 to 6199	040 024 3901 to 3999	070 916 1340 to 1399	112 049 4413 to 4499
013 610 0014 to 0099	040 674 7100 to 7199	071 047 5768 to 5799	112 870 9765 to 9799
014 932 1000 to 1099	040 688 8816 to 8899	071 179 9800 to 9899	113 319 2000 to 2099
014 972 0800 to 0899	041 299 6752 to 6799	071 386 3682 to 3699	114 402 3850 to 3899
015 363 0065 to 0099	041 623 8889 to 8899	071 507 6840 to 6899	114 866 5368 to 5397
017 028 3200 to 3299	041 803 6565 to 6599	072 045 9641 to 9699	116 154 2800 to 2899
018 569 5333 to 5399	043 129 1968 to 1997	072 675 8287 to 8299	116 986 4400 to 4499
018 986 5264 to 5299	043 205 5922 to 5999	073 763 0867 to 0876	117 175 1647 to 5169
019 518 2814 to 2899	044 087 3457 to 3499	073 763 0878 to 0887	117 951 4687 to 4699
020 698 5159 to 5199	044 087 4000 to 4099	073 763 0889 to 0898	117 951 5200 to 5299
020 844 7307 to 7399	044 226 2487 to 2512	077 617 5481 to 5499	119 786 3051 to 3064
020 972 8948 to 8999	044 306 4200 to 4299	077 999 4001 to 4090	119 815 8961 to 6199
022 021 9110 to 9181	044 306 4370 to 4599	078 174 4475 to 4499	119 850 7400 to 7499
022 037 1411 to 1499	045 524 4121 to 4298	078 219 4931 to 4999	119 850 7700 to 7999
022 527 9201 to 9210	046 800 9870 to 9899	078 250 4756 to 4799	121 634 0460 to 0499
022 529 1882 to 1899	047 352 4000 to 4099	078 823 8312 to 8399	122 451 9879 to 9899
023 637 7169 to 7199	048 383 7650 to 7659	079 374 0300 to 2499	122 714 6805 to 6900
024 380 4100 to 4199	048 396 3647 to 3699	079 807 2342 to 2399	124 916 0304 to 0499
024 496 6870 to 6896	051 142 0755 to 0799	082 721 0228 to 0254	126 423 0136 to 0169
025 092 0987 to 0999	051 774 8857 to 8899	083 140 5000 to 7499	127 500 2328 to 2399
025 369 5535 to 5599	051 781 2875 to 2885	083 784 8886 to 8899	160 901 2254 to 2299
025 729 1151 to 1199	051 977 7010 to 7023	083 913 6915 to 6999	161 103 6581 to 6599
025 729 1643 to 1799	052 058 7115 to 7199	084 478 3920 to 3999	161 194 2857 to 0899
026 492 3180 to 3199	054 450 1130 to 1167	086 000 8271 to 8299	162 032 4447 to 4499
027 361 0430 to 0499	057 670 0563 to 0599	086 798 3840 to 3849	163 257 1085 to 1099
027 369 4482 to 4495	058 187 3836 to 3899	088 404 4472 to 4499	164 359 2406 to 2499
027 671 8762 to 8776	058 523 3003 to 3099	088 404 5584 to 5699	166 101 1433 to 1499
027 787 9886 to 9899	058 591 1153 to 1299	088 757 8688 to 8699	167 555 5201 to 5212
027 965 9487 to 9499	058 895 3746 to 3799	088 757 9400 to 9499	167 555 5214 to 5299
028 100 8069 to 8099	059 986 0814 to 0899	089 358 2248 to 2257	169 618 6274 to 6299
028 191 1852 to 1999	060 406 7650 to 7699	090 663 9678 to 9684	171 806 6878 to 6893
028 850 3000 to 3199	063 491 8122 to 8199	091 818 0071 to 0099	173 639 4685 to 4699
029 510 1500 to 1599	063 916 9968 to 9999	093 106 9346 to 9355	174 238 2779 to 2799
030 687 0903 to 0999	064 091 4500 to 4599	093 203 0500 to 0599	174 281 9347 to 9399
030 701 3442 to 3499	065 170 0471 to 0499	093 684 3630 to 3699	175 251 2600 to 0699
031 077 4507 to 4799	065 255 7909 to 7999	094 081 5074 to 5099	176 281 7937 to 7950
032 295 7500 to 9999	065 392 6345 to 6399	094 216 2555 to 2599	176 281 7963 to 7999
034 394 1000 to 1099	066 099 2014 to 2099	094 580 7062 to 7099	176 731 6586 to 6599
034 943 0400 to 0799	066 648 2880 to 2899	094 639 4200 to 4299	178 254 5000 to 9999
035 035 4337 to 4399	066 787 3639 to 3699	095 070 7186 to 7199	178 881 9900 to 9999

180 031 2089 to 2098	218 698 2157 to 2199	378 085 3679 to 3699	399 792 7775 to 7799
180 403 7723 to 7741	218 746 0800 to 0899	378 351 1063 to 1099	399 792 8300 to 8399
180 428 4580 to 0599	219 095 0100 to 0399	379 843 5100 to 5199	400 427 1051 to 1999
182 368 7544 to 0599	219 389 1885 to 1899	380 093 9600 to 9699	401 045 1505 to 1549
182 475 3229 to 3258	219 568 7435 to 7456	380 165 1165 to 1199	401 045 1571 to 1599
182 475 3904 to 3933	219 568 7469 to 7487	381 325 4500 to 4599	401 294 2700 to 2799
182 631 0031 to 0099	221 316 5757 to 5799	381 604 2510 to 2699	401 310 9505 to 9599
182 911 6539 to 6600	223 476 3914 to 3999	381 645 9525 to 9599	401 382 5312 to 5399
184 218 2760 to 2799	223 565 4921 to 4957	383 314 3968 to 3999	402 578 7876 to 7899
185 828 1474 to 1499	223 565 4979 to 4999	383 892 1000 to 1344	403 125 6744 to 6799
186 132 7583 to 0599	224 636 4745 to 4765	383 892 1382 to 1399	403 260 7000 to 7499
186 629 0589 to 0599	224 636 4776 to 4799	384 925 3641 to 3654	403 280 6470 to 6499
187 184 6177 to 0199	224 636 4855 to 4885	385 568 2331 to 2399	403 685 8600 to 8699
187 323 8200 to 8299	224 636 4932 to 4948	385 599 7554 to 7575	404 003 0300 to 0399
187 441 6080 to 6099	224 636 4950 to 4962	385 774 2024 to 2099	404 041 8838 to 8899
188 831 6774 to 6799	224 636 4985 to 4999	386 624 1412 to 1599	404 071 4268 to 4299
188 835 6370 to 6399	224 730 2207 to 2299	386 883 8936 to 8999	404 347 5356 to 5399
189 083 1064 to 1099	225 970 0500 to 0599	387 314 5574 to 5599	404 347 5548 to 5599
189 660 9583 to 9599	225 970 0600 to 0699	387 837 6300 to 6399	404 726 4500 to 4599
191 179 0377 to 0399	225 970 0700 to 0799	388 828 0656 to 0699	404 961 5001 to 5199
192 050 5762 to 5781	227 033 8679 to 8699	389 696 2400 to 2799	405 325 0188 to 0198
194 456 8600 to 0699	227 275 9400 to 9999	389 846 3104 to 3135	406 009 4587 to 4599
195 194 6881 to 6899	228 463 2456 to 2499	389 846 3145 to 3195	406 260 6830 to 6899
195 874 1112 to 1199	228 510 4852 to 4899	389 887 9211 to 9230	406 459 6641 to 6999
196 979 0524 to 0599	229 462 8451 to 8475	389 887 9234 to 9299	406 733 3000 to 3999
197 244 6100 to 6199	229 668 5977 to 5999	390 001 3182 to 3199	407 545 1557 to 1599
197 244 6300 to 6399	229 923 9176 to 9199	390 001 3500 to 3699	407 594 0412 to 0599
197 244 6400 to 6499	229 924 6696 to 6699	390 545 5974 to 5999	407 692 9100 to 9299
197 244 6500 to 6599	230 051 9500 to 9999	391 104 6146 to 6199	407 959 2190 to 2199
197 244 6600 to 6699	236 366 2431 to 2499	391 574 1466 to 1499	408 265 2275 to 2288
197 244 6700 to 6799	236 607 6882 to 6899	391 783 3020 to 3599	408 499 7700 to 7799
197 244 6800 to 8999	236 660 5853 to 5872	391 792 6100 to 6199	408 499 7900 to 7999
198 285 2556 to 2566	239 322 5200 to 5299	392 668 2956 to 2999	408 682 8484 to 8599
199 105 0778 to 0799	239 322 5400 to 5499	392 854 8500 to 8899	408 698 7015 to 7099
199 678 2968 to 2999	239 322 5600 to 5699	393 584 7566 to 7699	409 072 3941 to 3999
202 748 5133 to 5199	239 322 5800 to 5899	393 650 0074 to 0099	410 491 2311 to 2399
202 748 5245 to 5299	239 322 5900 to 5999	393 838 8316 to 8499	410 694 8400 to 8599
202 748 5300 to 5399	240 593 1879 to 1899	393 893 6007 to 6099	410 775 1500 to 1599
202 748 5400 to 5499	273 070 8059 to 8099	394 126 6907 to 6999	410 795 7927 to 7999
203 256 1240 to 1299	273 775 7700 to 7899	394 189 0405 to 0599	410 867 0917 to 0966
204 230 3577 to 3595	302 000 0000 to 9999	394 822 3243 to 3278	410 867 0970 to 0999
205 019 0174 to 0199	349 746 2056 to 2099	394 990 1810 to 1899	411 868 1023 to 1199
207 196 9900 to 9999	350 518 7350 to 7374	395 343 3264 to 3299	411 922 2322 to 2399
207 204 0700 to 0799	360 011 1690 to 1699	395 373 3035 to 3099	412 193 0900 to 0999
207 204 0800 to 0899	360 168 6008 to 6099	395 396 9649 to 9799	412 395 8599 to 8699
207 514 3857 to 3899	360 173 8800 to 8899	395 970 3240 to 3299	412 485 6500 to 6599
208 556 4707 to 4799	360 324 2326 to 2399	397 622 4054 to 4099	412 485 6610 to 6699
210 057 4038 to 4047	362 861 3064 to 3099	397 819 8902 to 8999	412 885 5953 to 5999
210 221 0548 to 0599	373 006 2176 to 2199	398 149 7200 to 7699	414 193 3608 to 3674
214 061 4711 to 4724	374 768 2600 to 2699	399 070 0872 to 0899	414 193 3677 to 3699
214 303 6311 to 6325	375 169 4400 to 4599	399 156 7119 to 7199	414 411 7348 to 7399
214 303 6239 to 6258	375 829 3400 to 3499	399 203 5064 to 5099	414 640 0757 to 0799
214 877 4251 to 4273	375 851 9100 to 9199	399 296 9910 to 9999	414 965 1727 to 1799
215 252 3918 to 3992	376 196 0911 to 0999	399 396 8935 to 8999	417 302 8104 to 8199

417 387 6532	to	6599	433 765 4003	to	4099	455 221 1348	to	1499	469 666 9900	to	9999
417 496 6800	to	6999	434 482 7060	to	7199	455 364 2147	to	2199	469 678 1900	to	1999
417 871 9250	to	9299	434 513 2386	to	2399	455 399 5400	to	5499	469 781 4900	to	4999
417 930 9533	to	9599	434 968 3076	to	3092	455 476 0676	to	0699	469 947 6960	to	6999
418 164 6500	to	6799	435 303 1831	to	1842	455 543 0618	to	0699	470 755 5800 to 5818		
418 423 9863	to	9899	435 303 1986	to	1999	456 410 9006	to	9099	471 918 0300	to	0999
418 633 5922	to	5999	435 666 6092	to	6399	456 470 4146	to	4299	471 985 2408	to	2419
418 719 8520	to	8599	436 082 6400	to	6899	456 619 4460	to	4499	472 191 6700	to	6799
418 744 2235	to	2299	436 160 6441	to	6499	457 333 2686	to	2699	472 270 2555	to	2599
418 962 2848	to	2899	437 316 7115	to	7199	457 729 1767	to	1777	472 987 0213	to	0241
419 543 0286	to	0299	437 427 0500	to	3499	457 937 8615	to	8699	472 987 0290	to	0299
419 730 0300	to	0399	439 179 2300	to	2399	458 028 9810	to	9899	473 151 2069	to	2199
420 277 0015 to 0049			439 310 0458	to	0499	458 057 2712	to	2999	473 666 9138	to	9199
420 599 0734	to	0798	440 698 1947 to 1999			458 069 9537	to	9599	473 952 3429	to	3499
420 661 4115	to	4199	440 858 6300	to	6399	458 069 9665	to	9699	474 108 5402	to	5499
420 758 9500	to	9699	440 858 6420	to	7299	458 337 5222	to	5299	474 356 5193	to	5299
420 969 3951	to	3971	441 199 1655	to	1699	458 354 7653	to	7999	474 949 3366	to	3399
420 969 3973	to	3999	443 127 3648	to	3699	458 671 8678	to	8699	475 134 9362	to	9399
421 116 3565	to	3599	443 127 4000	to	4099	458 671 8721	to	8798	475 167 9667	to	9699
421 130 9300	to	9399	443 673 7900	to	7999	458 847 5044	to	5999	475 319 3415	to	3499
421 313 4500	to	4999	443 800 9335	to	9399	459 274 7624	to	7699	475 319 3649	to	3799
421 364 5537	to	5599	444 382 8822	to	8899	459 365 5432	to	5499	475 340 6400	to	6599
421 656 2609	to	2699	444 390 1667	to	1699	459 378 5764	to	5799	475 424 8410	to	8499
421 988 9700	to	9799	444 457 3854	to	3899	459 472 4816	to	4999	475 629 9156	to	9199
422 172 4667	to	4699	450 048 4173 to 4199			460 349 6878 to 6899			475 850 6101	to	6199
422 484 4212	to	4299	450 048 4442	to	4699	460 550 1909	to	1999	475 875 2500	to	2599
422 556 1270	to	1299	450 560 5173	to	5199	460 997 5234	to	5299	476 169 8264	to	8299
422 587 7024	to	7099	450 620 3077	to	3099	461 973 6443	to	6499	476 189 3000	to	3499
422 819 7533	to	7599	450 620 3135	to	3199	462 152 0107	to	0299	476 331 2480	to	2499
422 842 5073	to	5087	450 780 2716	to	2799	462 274 1072	to	1099	477 289 8601	to	8699
422 907 7563	to	7599	450 801 2700	to	2799	462 277 8373	to	8399	477 681 5206	to	5299
424 500 6050	to	6099	451 109 2967	to	2984	462 554 6051	to	6099	478 010 4243	to	4268
424 641 8500	to	8599	451 115 4110	to	4125	463 011 5529	to	5540	478 010 4270	to	4291
424 871 6600	to	6699	451 115 4127	to	4199	463 176 4115	to	4199	478 450 5071	to	5099
425 298 2352	to	2399	451 746 0700	to	0799	463 176 4229	to	4299	478 469 7838	to	7858
425 418 4269	to	4299	452 265 0074	to	0099	463 185 2600	to	2799	478 469 7883	to	7899
425 418 4405	to	4499	452 265 0246	to	0299	463 227 7711	to	7799	479 280 9800	to	9899
426 547 4566	to	4599	452 265 0335	to	0999	463 414 4869	to	4899	479 365 9116	to	9176
427 412 6337	to	6499	452 509 1169	to	1199	463 808 3484	to	3499	479 412 9900	to	9999
427 481 0900	to	0999	452 855 6471	to	6499	463 945 7400	to	7899	479 667 6190	to	6199
428 027 2742	to	2752	452 890 4679	to	4799	464 629 9000	to	9399	479 748 9680	to	9699
429 474 4172	to	4199	452 900 8215	to	8238	464 711 4332	to	4399	479 860 7000	to	7199
429 889 2900	to	2999	453 117 9146	to	9199	465 692 3963	to	3999	480 526 2000 to 2099		
430 150 4401 to 4599			453 334 3631	to	3699	465 698 8300	to	8599	480 640 6330	to	6399
430 172 9800	to	9899	453 603 7841	to	7891	465 743 7745	to	7799	480 658 0568	to	0599
430 177 1900	to	2099	453 650 1140	to	1199	466 798 6056	to	6067	480 689 5100	to	5199
430 444 9500	to	9699	453 741 1300	to	1399	467 147 4300	to	4399	481 072 9463	to	9499
430 664 4070	to	4099	454 013 2919	to	2999	468 079 5782	to	5799	481 673 0074	to	0095
432 168 8419	to	8499	454 186 2411	to	2499	469 067 2817	to	2899	482 527 1500	to	1599
432 708 6800	to	6999	454 268 4883	to	4899	469 127 8000	to	8199	482 541 5255	to	5299
432 744 1544	to	1599	454 302 5400	to	5499	469 213 0359	to	0399	482 729 6800	to	6899
432 995 9775	to	9799	454 490 8300	to	8399	469 213 0500	to	0599	483 363 7207	to	7299
433 003 5800	to	5899	454 547 7434	to	7499	469 561 8011	to	8099	483 402 2356	to	2399
433 757 3047	to	3099	454 922 4867	to	4895	469 658 1961	to	1999	483 486 5100	to	5199

483 632 1521 to 1599	500 064 1858 to 1869	603 678 8418 to 8499	622 989 8032 to 8099
483 632 2600 to 2799	500 070 5725 to 7799	603 678 8700 to 9999	623 076 9300 to 9399
483 849 1615 to 1699	501 058 0016 to 0026	604 086 0880 to 0899	623 819 5006 to 5099
484 174 4803 to 5299	501 331 0300 to 0399	604 349 1414 to 1499	623 895 8200 to 8399
484 323 8900 to 9199	501 460 0977 to 0999	604 503 7776 to 7799	623 917 0000 to 0099
484 680 5000 to 5038	502 227 7645 to 7699	605 520 9037 to 9099	623 917 0200 to 0299
484 680 5040 to 5074	502 424 0200 to 0499	605 685 4010 to 4099	624 468 5288 to 5299
484 680 5077 to 5099	502 424 0600 to 0699	605 988 6467 to 6499	624 665 3162 to 3198
485 029 4913 to 4999	502 496 6923 to 6999	607 689 7951 to 7960	625 088 6735 to 6799
486 176 0600 to 0699	503 003 2700 to 2899	607 728 1276 to 1299	625 916 9500 to 9799
486 559 7555 to 7599	503 194 5144 to 5153	608 727 7100 to 7199	625 968 8956 to 8999
486 696 3023 to 3199	503 790 9922 to 9948	608 727 7273 to 7599	627 005 3938 to 3999
488 173 7900 to 7999	504 045 4030 to 4099	608 813 9950 to 9999	627 384 3907 to 4099
488 206 4100 to 4199	504 166 0200 to 0599	609 067 5325 to 5399	627 496 7549 to 7599
488 226 0200 to 0299	504 240 1062 to 1399	609 067 5488 to 5499	627 708 3605 to 3699
488 709 3906 to 3999	504 805 3300 to 3499	609 067 5600 to 5699	627 776 2500 to 2599
488 855 8359 to 8399	505 096 0662 to 0699	609 289 6123 to 6199	628 226 3100 to 3199
489 181 8963 to 8999	505 893 7739 to 7799	609 438 4400 to 4499	628 814 4702 to 4799
489 223 2000 to 2099	505 893 7800 to 7999	609 493 1100 to 1199	628 851 9689 to 9699
489 311 1930 to 1999	506 124 0800 to 0999	609 766 8091 to 8999	629 510 7200 to 7299
489 318 6200 to 6300	506 165 7027 to 0099	609 825 4100 to 4115	629 964 4200 to 4294
489 384 0027 to 0099	506 502 5209 to 5299	609 884 2981 to 2999	630 389 3056 to 3071
489 427 0658 to 0899	506 756 1682 to 1699	609 893 1000 to 1099	630 463 0588 to 0599
489 997 5252 to 5299	506 756 1700 to 1799	610 092 3200 to 3299	631 459 9117 to 9199
490 669 5850 to 6099	506 756 1800 to 1899	610 582 4200 to 4299	631 762 9325 to 9399
490 717 7080 to 7099	506 836 5326 to 5399	611 879 6939 to 6999	632 217 4933 to 4999
490 721 6000 to 6099	508 488 6226 to 6299	612 291 8013 to 8099	632 500 0000 to 640 3999
490 793 1500 to 2099	508 789 8332 to 8399	612 751 5171 to 5199	633 110 4165 to 4199
490 886 8171 to 8199	508 789 8400 to 8499	612 751 5226 to 5299	633 110 4303 to 4499
490 977 9221 to 9240	509 909 0425 to 0435	612 751 6083 to 6099	633 438 6429 to 6599
491 258 8100 to 9099	510 150 2400 to 2499	612 751 6268 to 6299	633 588 7173 to 7182
491 567 1376 to 1399	510 381 3200 to 3299	612 751 6572 to 6599	634 725 0700 to 0799
492 254 4800 to 4899	510 587 9500 to 9599	612 774 2111 to 2199	634 803 3239 to 3299
492 283 5100 to 5199	510 587 9659 to 9699	612 774 2254 to 2299	634 807 2474 to 2499
492 610 6813 to 6899	510 269 9770 to 9999	612 774 2500 to 2599	634 827 5900 to 5999
493 394 5568 to 5599	511 021 5042 to 5099	614 469 0979 to 0999	634 886 3428 to 3499
493 470 2562 to 2599	511 021 5100 to 5199	614 474 3000 to 3099	635 559 3449 to 3499
493 473 7700 to 7799	511 468 1747 to 1799	614 521 3490 to 3499	636 289 6214 to 6299
493 716 2153 to 2199	511 844 0100 to 0199	614 645 1800 to 1899	636 634 8007 to 8042
494 206 2972 to 2999	511 844 0340 to 0399	614 832 1100 to 2099	637 150 1200 to 1299
494 217 3446 to 3999	600 645 3223 to 3299	615 017 7505 to 7599	637 562 5828 to 5899
494 224 0500 to 0599	601 339 1200 to 1399	617 711 6609 to 6699	638 042 1647 to 1699
495 145 0600 to 0699	601 653 5884 to 5899	617 760 5266 to 5299	638 049 4984 to 4999
496 209 7425 to 7499	601 661 7700 to 7799	617 813 3601 to 3699	638 318 1115 to 1199
496 213 8728 to 8799	601 682 5343 to 5399	618 840 9200 to 9299	638 318 1453 to 1499
496 474 5226 to 5248	601 928 1600 to 1699	619 551 7229 to 7299	638 885 0000 to 0299
497 053 8517 to 8699	602 512 2972 to 2999	619 859 3000 to 3099	638 903 4362 to 4373
497 854 8673 to 8699	602 555 2400 to 2799	620 073 9400 to 9499	639 415 1929 to 1999
498 449 8888 to 8899	602 829 7061 to 7099	621 614 7907 to 7930	639 415 2019 to 2099
498 929 8285 to 8499	603 483 9572 to 9599	621 614 7932 to 7999	639 420 6200 to 6299
498 936 5310 to 5399	603 490 7200 to 7299	621 648 8021 to 8199	639 469 3517 to 3799
499 016 5425 to 5499	603 678 7100 to 7199	621 648 8500 to 8599	639 605 2143 to 2199
499 440 8575 to 8899	603 678 7662 to 7699	621 904 8351 to 8599	639 657 8600 to 8799
499 731 6717 to 6799	603 678 7902 to 7999	621 916 1978 to 1989	640 289 7500 to 7599

640 289 7700 to 7999	650 627 4212 to 4299	672 444 2000 to 2999	691 664 1800 to 1999
641 170 4420 to 4499	650 736 2043 to 2099	672 828 3410 to 3499	691 664 2400 to 2499
641 318 3133 to 3199	650 739 1540 to 1699	673 167 5776 to 5799	692 727 9362 to 9399
641 378 6500 to 6999	651 741 4415 to 4499	675 464 3700 to 3799	692 798 1800 to 1899
641 383 8739 to 8799	651 882 2800 to 2899	675 464 4000 to 4199	693 249 0779 to 0799
641 877 3187 to 3299	652 754 6317 to 6399	676 365 5958 to 5999	693 249 0877 to 1699
641 877 3310 to 3399	653 131 4945 to 4999	676 669 1024 to 1099	693 445 0566 to 0999
642 355 8094 to 8199	653 426 3300 to 3399	677 126 6734 to 6799	693 448 8500 to 8999
642 355 8308 to 8999	653 455 4874 to 4899	677 333 9979 to 9999	693 645 9583 to 9599
642 900 0018 to 0099	654 238 0000 to 0399	677 466 1088 to 1099	693 965 4200 to 4299
643 030 6254 to 6299	654 404 3065 to 3092	678 071 4500 to 4799	695 741 2906 to 2999
644 066 0882 to 0899	654 962 2900 to 3199	678 096 7531 to 7599	695 947 8518 to 8599
644 069 0600 to 0699	655 103 5081 to 5199	679 909 2578 to 2599	696 662 8247 to 8299
644 077 7506 to 7699	655 523 2600 to 2999	680 112 9565 to 9599	697 447 8285 to 8296
644 085 8157 to 8199	656 305 2448 to 2499	680 244 0903 to 0999	698 042 4816 to 4899
644 112 9839 to 9899	657 347 4438 to 4999	680 412 6046 to 6099	698 131 2138 to 2157
644 373 9083 to 9099	657 710 8100 to 8999	680 761 6800 to 6899	698 227 0000 to 0099
644 380 1460 to 1499	657 780 0985 to 0999	681 677 0540 to 0699	700 065 2570 to 2599
644 733 4715 to 4799	658 586 1400 to 1499	682 070 1029 to 1099	700 065 4800 to 4899
644 900 9712 to 9799	658 877 8000 to 8199	682 956 6280 to 6299	700 190 3350 to 3359
644 901 0109 to 1299	658 880 8000 to 8199	682 956 6490 to 6599	700 228 6048 to 6099
644 901 1325 to 1399	659 398 7300 to 7399	682 956 6700 to 6799	700 650 0452 to 0499
644 923 6800 to 7799	659 706 8113 to 8199	682 965 1178 to 1199	700 666 1323 to 1349
644 932 4655 to 4699	659 846 7837 to 7899	682 965 1201 to 1299	700 786 9106 to 9142
645 318 7240 to 7499	660 510 4100 to 4199	683 118 2389 to 2399	700 859 0744 to 0758
645 333 1766 to 1799	660 673 0400 to 0599	683 378 2000 to 2099	701 028 6780 to 6899
645 790 8632 to 8699	661 488 5000 to 5099	683 378 2117 to 2299	701 213 3900 to 3999
645 821 0657 to 0699	661 609 9100 to 9199	683 415 1200 to 1499	701 267 2000 to 3999
645 930 7948 to 7999	661 716 9420 to 9499	683 444 8159 to 8199	701 335 7312 to 7399
645 975 0737 to 0762	661 906 6522 to 6599	685 154 7780 to 7789	701 369 2005 to 2050
646 242 6200 to 6299	662 021 8332 to 8399	685 297 7645 to 7699	701 499 2260 to 2299
646 270 7639 to 7799	662 068 0700 to 0899	685 623 5264 to 5299	701 503 2247 to 2299
646 798 4000 to 4999	662 553 0774 to 0799	685 650 9487 to 9499	701 541 2271 to 2299
647 048 7035 to 7099	663 078 7034 to 7099	685 669 4200 to 4299	701 553 6557 to 6599
647 049 2900 to 2999	663 763 5300 to 5399	685 757 8452 to 8499	701 578 7460 to 7469
647 398 8300 to 8399	663 883 7039 to 7499	686 071 2694 to 2799	701 578 7475 to 7499
647 398 8481 to 8499	663 938 9200 to 9299	686 176 3333 to 3354	701 601 3457 to 3499
647 437 3000 to 4999	664 253 8000 to 8499	686 372 3200 to 3299	701 605 5913 to 5999
647 811 2188 to 2199	664 656 3055 to 3099	686 644 5879 to 5899	701 695 3982 to 3999
648 009 6057 to 6099	665 174 6400 to 6499	686 899 1371 to 1399	701 695 4148 to 4199
648 163 5300 to 5499	665 274 8208 to 8299	686 931 7636 to 7699	701 695 4227 to 4299
648 722 5283 to 5299	665 669 5400 to 5499	687 601 0973 to 0999	701 708 1741 to 1799
648 892 3164 to 3199	666 132 8226 to 8299	687 614 6774 to 6799	701 736 3966 to 3999
649 100 3989 to 3999	666 696 2209 to 2299	688 120 9000 to 9999	701 772 0870 to 0899
649 647 0370 to 0399	666 696 2309 to 2399	688 314 3107 to 3191	701 838 2800 to 2899
649 647 0522 to 0599	667 032 9300 to 9399	690 291 1361 to 1371	701 941 0600 to 0699
649 647 5237 to 5399	667 729 5529 to 5599	690 788 2877 to 2899	702 171 1603 to 1699
649 647 9100 to 9299	668 383 8400 to 8699	690 893 5344 to 5399	702 195 5109 to 5199
649 666 7800 to 8299	670 368 3400 to 3499	690 893 5512 to 5599	702 254 9300 to 9399
650 114 7707 to 7719	670 369 7336 to 7399	690 904 1300 to 1599	702 264 7569 to 7599
650 130 3400 to 3599	670 750 7169 to 7199	690 941 6000 to 6199	702 519 0513 to 0524
650 213 0406 to 0499	671 046 6200 to 6399	691 313 6383 to 6399	702 713 1800 to 1809
650 555 1749 to 1799	671 251 5448 to 5499	691 313 6600 to 6699	702 821 5730 to 5799
650 564 1900 to 1999	671 926 5600 to 5799	691 582 8003 to 8099	702 821 5805 to 5899

702 844 6975 to 6994	806 087 1100 to 1499	847 284 2481 to 2499	865 883 6082 to 6099
702 846 6331 to 6399	806 268 9275 to 9299	847 374 7055 to 7065	866 004 3000 to 3999
702 848 3900 to 3999	806 534 3400 to 3477	847 374 7055 to 7065	866 442 4100 to 4899
702 857 7302 to 7499	807 342 3283 to 3399	847 636 5304 to 5399	867 366 9108 to 9118
702 878 0114 to 0199	808 086 7100 to 7199	847 700 5447 to 5499	867 633 7403 to 7499
703 364 1707 to 1799	808 090 3440 to 3499	847 723 7500 to 7599	867 737 5623 to 5699
740 002 7710 to 7719	808 325 5161 to 5699	849 485 3427 to 3499	868 169 4529 to 4599
740 037 6730 to 6800	808 784 8000 to 8299	849 520 9850 to 9899	868 173 8400 to 8599
740 119 2275 to 2284	830 125 0672 to 0699	849 608 1357 to 1399	868 514 9000 to 9099
740 130 6688 to 6698	830 602 5800 to 5999	849 792 2600 to 2699	868 566 9200 to 9299
740 144 2780 to 2795	830 610 3700 to 3799	850 546 1862 to 1899	869 200 0000 to 9999
740 241 9049 to 9099	830 983 3500 to 3599	851 143 6826 to 6844	869 387 1150 to 1199
740 252 9265 to 9294	830 983 3635 to 3699	851 209 9880 to 9899	869 505 3500 to 3599
740 255 1718 to 1799	831 354 1387 to 1399	851 928 9221 to 9299	869 523 7033 to 7099
740 274 2602 to 2619	831 815 8240 to 8299	852 589 6560 to 6599	869 566 6150 to 6167
740 277 0366 to 0392	832 525 3810 to 3899	853 049 3646 to 3699	869 800 0000 to 999 9999
740 332 7658 to 7671	833 159 1884 to 1899	854 304 4089 to 4999	870 054 4814 to 4899
740 348 6641 to 6658	833 456 2567 to 2599	854 529 2200 to 2299	870 491 4812 to 4849
740 351 4790 to 4799	833 566 3015 to 3071	854 532 0000 to 2999	870 536 5820 to 5829
740 374 7416 to 7499	834 130 5200 to 5299	855 001 6204 to 6249	870 541 7167 to 7239
740 470 2420 to 2443	834 316 5444 to 5499	855 319 9364 to 9399	870 575 8155 to 8999
740 514 0300 to 0499	834 354 8747 to 8766	855 361 3390 to 3399	870 589 0485 to 0494
740 523 7432 to 7449	834 354 8824 to 8838	856 226 0490 to 0499	870 691 7060 to 7099
740 535 1555 to 1580	835 269 5700 to 5799	856 656 5800 to 5999	872 028 4850 to 4899
740 557 3570 to 3579	835 496 7303 to 7399	856 752 0200 to 0299	872 029 9306 to 9399
740 650 4104 to 4140	835 539 5200 to 5999	857 111 1352 to 1399	872 078 3709 to 3799
740 684 0620 to 0800	835 813 3015 to 3099	857 279 3450 to 3499	872 100 0445 to 0459
740 701 6105 to 6114	837 672 8967 to 8999	857 843 4000 to 4099	900 556 4178 to 4199
740 705 9790 to 9799	837 784 3282 to 3299	858 124 7644 to 7699	900 845 0044 to 0099
740 726 6400 to 6500	838 176 8377 to 8399	858 756 3111 to 3299	900 936 0217 to 0299
740 748 8319 to 8329	838 518 1257 to 1299	859 063 8200 to 8699	900 936 0435 to 0499
740 765 3306 to 3399	839 718 8257 to 8299	859 190 0600 to 0644	901 058 5255 to 5280
740 774 8434 to 8499	840 323 0600 to 0699	859 437 5538 to 5599	901 273 1082 to 1099
740 779 4259 to 4299	840 875 6235 to 6299	859 811 2888 to 2899	901 287 5143 to 5199
740 786 1885 to 1899	840 910 0900 to 0999	859 855 8873 to 8999	901 291 2789 to 2799
740 790 5989 to 5999	841 349 5000 to 5099	860 240 8520 to 8599	901 525 7122 to 7199
740 803 4870 to 4879	841 805 7747 to 7899	860 275 3900 to 3999	902 089 1253 to 1299
740 820 4854 to 7836	841 805 7944 to 8099	860 518 9629 to 9699	902 198 9769 to 9799
740 827 7578 to 7594	842 226 0685 to 0695	860 600 0021 to 0999	902 948 1269 to 1299
740 917 7490 to 7499	842 685 4600 to 4699	861 158 2350 to 2599	902 985 0833 to 0899
740 918 5531 to 5549	842 685 4742 to 4999	861 367 5400 to 5499	903 370 6934 to 6999
741 037 8528 to 8551	842 860 0300 to 0399	861 637 6010 to 6099	904 600 6523 to 6599
742 030 6135 to 6149	842 898 5582 to 5599	861 979 7292 to 7499	904 892 0378 to 0399
742 033 2663 to 2674	843 062 7100 to 7199	862 216 6100 to 6199	904 892 0648 to 1299
742 040 3300 to 3309	843 077 6288 to 6299	862 263 9213 to 9299	905 056 2216 to 2299
742 151 5000 to 5014	843 077 6378 to 6399	862 271 0800 to 0999	905 510 6647 to 6799
742 191 4640 to 4649	843 758 5769 to 5778	862 271 5000 to 5099	905 510 6900 to 7099
742 192 5210 to 5224	843 786 2554 to 2699	863 871 5138 to 5199	905 794 0000 to 0199
742 222 9200 to 9210	845 656 8165 to 8199	863 949 5300 to 5399	905 794 0288 to 0299
742 228 9660 to 9669	845 727 2100 to 2199	864 088 8200 to 8299	905 873 6900 to 6999
742 247 6980 to 6989	845 746 2618 to 2635	864 426 3972 to 3999	905 873 7100 to 7299
742 290 0936 to 0950	846 390 7531 to 7599	864 520 6117 to 6136	905 880 8900 to 8999
742 302 7600 to 7699	846 918 0572 to 0599	865 151 0526 to 0599	905 889 7100 to 7199
805 885 8411 to 8499	847 237 7690 to 7699	865 500 4034 to 4099	906 158 1508 to 1599

906 558 8812 to 8899	913 818 3501 to 3999	919 889 5030 to 5070	926 432 5907 to 5999
906 982 2214 to 2299	914 063 4300 to 4399	919 889 5090 to 5099	926 436 3600 to 3699
907 725 8500 to 8599	914 346 7621 to 7644	919 915 2774 to 2787	927 765 6257 to 6299
907 815 0216 to 0257	914 453 1366 to 1399	920 155 4662 to 4687	928 197 8100 to 8199
908 622 4225 to 4235	914 529 6185 to 6299	920 309 9039 to 9199	928 197 8283 to 8299
908 936 9254 to 9299	914 896 4658 to 4699	920 771 5321 to 5399	928 856 2059 to 2068
909 066 4494 to 7499	915 187 8774 to 8779	920 857 5500 to 5899	930 078 5800 to 5899
909 067 7400 to 7499	915 300 2783 to 2799	920 864 3480 to 3499	930 219 1722 to 1799
909 100 1787 to 1799	915 546 6822 to 6999	920 963 4567 to 4599	930 335 7810 to 7819
909 100 1900 to 2099	915 646 5183 to 5199	921 333 7400 to 7499	931 097 9259 to 9299
909 355 0422 to 0499	915 671 3963 to 3980	921 477 3762 to 3799	931 156 1502 to 1579
909 568 8900 to 9099	915 671 3982 to 3999	922 278 1048 to 1399	931 156 1600 to 1625
909 568 9300 to 9499	915 675 2217 to 2299	922 280 2019 to 2099	931 156 1671 to 1699
909 725 7307 to 7399	916 440 3377 to 3399	922 280 2233 to 2299	932 506 6400 to 6599
909 833 0947 to 0999	916 670 6352 to 6399	922 773 0459 to 0499	932 732 1796 to 1799
910 219 8631 to 8699	916 682 5300 to 5399	923 032 7000 to 7399	932 827 9026 to 9099
910 265 1100 to 1199	916 694 1414 to 1499	923 045 3630 to 3699	932 957 2300 to 2399
910 471 7273 to 7299	916 703 0802 to 0821	923 484 3600 to 3699	933 060 6160 to 6189
910 536 2505 to 2599	917 089 0709 to 0799	923 493 9403 to 9599	933 387 2541 to 2561
910 958 7499 to 7599	917 089 0842 to 0899	923 493 9681 to 9699	933 760 3609 to 4199
911 140 1000 to 2199	917 216 2928 to 2999	923 604 4424 to 4499	933 894 0928 to 0999
911 245 2545 to 2599	917 370 6300 to 6499	923 810 7800 to 8299	934 018 2729 to 2741
911 268 9077 to 9099	917 486 4900 to 4999	924 252 1200 to 1299	934 180 0300 to 0399
911 400 8948 to 8999	918 460 0602 to 0699	924 252 1400 to 1499	934 236 3954 to 3999
911 508 1620 to 1799	918 951 7231 to 7299	924 533 0711 to 0799	934 622 8717 to 8999
911 509 9310 to 9399	919 519 2786 to 2799	924 533 2343 to 2399	935 216 0312 to 0399
911 523 3000 to 3999	919 536 0770 to 0799	924 533 2428 to 2499	935 843 2202 to 2247
912 057 9922 to 9999	919 814 3095 to 3199	924 685 1957 to 1999	936 024 8889 to 8899
912 882 0563 to 0899	919 889 5110 to 5134	924 946 6300 to 6699	936 339 4455 to 4499
913 605 2218 to 2299	919 889 5137 to 5176	925 333 5900 to 6099	
913 709 2429 to 2499	919 889 5178 to 5199	925 336 2300 to 2399	

— Criminal Investigations Group,
Postal Inspection Service, 2-16-17

Missing, Lost, or Stolen Canadian Money Order Forms

Do Not Cash — Upon Receipt, Notify Local Postal Inspectors

This listing will be provided to all Postal Service™ employees responsible for accepting and cashing postal money orders. Destroy all interim notices when the numbers listed appear in the *Postal Bulletin*. The new money

order serial numbers consist of the first 9 digits. The 10th digit is a check digit only.

Do not cash outdated money orders **104 151 601 to 692 600 000**. Advise holders to send invalid money orders To Canada Post Corporation, Ottawa, Canada K1A 0B1. Check for altered dollar amounts by holding money orders to the light.

719 869 731	to	9 760	726 504 331	to	4 390	732 355 201	to	5 380	738 892 270	to	2 290
720 227 871	to	7 930	726 563 701	to	4 060	732 472 320	to	2 560	738 997 259	to	7 380
720 227 949	to	7 960	726 599 371	to	9 460	732 541 605	to	1 620	739 161 451	to	1 540
720 368 543	to	8 570	726 626 356	to	6 370	732 572 221	to	2 490	739 219 381	to	9 440
720 392 151	to	2 570	727 182 271	to	2 510	732 586 479	to	6 710	739 740 151	to	0 180
720 556 491	to	6 640	727 416 181	to	6 240	732 994 037	to	4 080	739 793 491	to	3 520
720 558 621	to	8 650	727 481 431	to	1 460	733 163 449	to	3 460	739 793 527	to	3 550
720 575 361	to	5 570	727 749 241	to	9 780	733 297 171	to	7 290	739 942 621	to	2 650
720 590 152	to	0 179	728 382 331	to	2 480	733 446 631	to	7 110	739 999 231	to	9 320
721 638 331	to	9 170	728 702 338	to	2 400	733 474 665	to	4 770	740 011 517	to	1 530
721 815 391	to	5 420	728 915 371	to	5 850	733 704 482	to	4 570	740 030 701	to	0 970
721 969 713	to	9 740	728 953 141	to	3 410	733 751 041	to	1 130	740 261 740	to	1 820
722 072 137	to	2 160	728 954 280	to	4 310	734 009 101	to	9 130	740 265 811	to	6 290
722 378 265	to	8 280	729 169 081	to	9 140	734 290 759	to	0 770	740 299 111	to	9 170
722 413 990	to	4 004	729 363 841	to	3 870	734 389 273	to	9 290	740 299 231	to	9 260
722 764 948	to	4 980	729 682 891	to	3 190	734 440 031	to	0 111	740 329 266	to	9 320
722 825 840	to	5 889	729 838 940	to	9 070	734 797 201	to	7 320	740 889 081	to	9 090
723 153 841	to	3 850	729 839 101	to	9 130	734 939 611	to	9 640	741 010 421	to	0 530
723 237 616	to	7 630	730 077 683	to	7 840	734 950 111	to	0 170	741 113 041	to	3 370
723 331 081	to	1 110	730 109 847	to	9 880	735 120 331	to	0 840	741 373 891	to	4 340
723 496 443	to	6 470	730 373 761	to	3 850	735 283 008	to	3 020	741 452 369	to	2 490
723 967 291	to	7 320	730 501 951	to	2 130	735 293 131	to	3 220	741 492 991	to	3 140
724 655 196	to	5 340	730 519 379	to	9 470	735 635 010	to	5 040	741 553 460	to	3 470
724 711 441	to	1 500	730 569 278	to	9 360	735 783 961	to	3 990	741 764 431	to	4 520
724 711 538	to	1 560	730 711 711	to	1 740	735 803 401	to	3 430	741 764 431	to	4 520
724 793 221	to	3 250	730 722 991	to	3 230	736 005 420	to	5 440	742 178 834	to	8 880
724 908 109	to	8 120	730 845 970	to	5 990	736 366 021	to	6 110	742 325 500	to	5 520
724 937 461	to	7 670	730 888 291	to	8 320	736 624 456	to	4 500	742 325 668	to	5 700
725 163 118	to	3 151	730 927 591	to	7 680	736 670 851	to	1 060	742 408 771	to	8 830
725 202 735	to	2 750	731 307 914	to	7 930	736 767 061	to	7 090	742 512 120	to	2 150
725 398 591	to	8 800	731 402 431	to	2 460	736 767 093	to	7 120	742 684 849	to	4 890
725 464 591	to	4 920	731 407 232	to	7 320	736 982 191	to	2 370	742 839 553	to	9 630
725 475 321	to	5 330	731 588 301	to	8 340	736 982 551	to	2 730	742 913 668	to	3 700
725 711 057	to	1 070	731 767 273	to	7 320	737 110 141	to	0 170	742 917 287	to	7 296
725 738 581	to	8 730	731 781 061	to	1 120	737 185 501	to	5 710	742 921 891	to	1 980
725 981 311	to	1 430	731 837 821	to	7 910	737 317 321	to	7 350	742 983 631	to	3 810
725 987 835	to	7 880	731 841 377	to	1 450	737 517 781	to	7 840	743 020 021	to	0 170
726 060 811	to	0 900	732 018 481	to	8 600	737 628 181	to	8 210	743 206 491	to	6 500
726 391 970	to	2 520	732 067 972	to	8 370	737 634 258	to	4 270	743 235 992	to	6 050
726 484 771	to	4 800	732 188 649	to	8 670	738 361 971	to	1 980	743 940 631	to	0 900
726 493 351	to	5 300	732 193 460	to	3 470	738 447 601	to	7 660	743 978 011	to	8 070
726 504 031	to	4 063	732 201 241	to	1 390	738 648 355	to	8 450	744 234 751	to	4 780
726 504 070	to	4 090	732 220 431	to	0 440	738 849 811	to	9 900	744 499 591	to	9 680

744 626 901	to 6 910	755 957 701	to 8 000	763 900 479	to 0 530	773 179 320	to 9 410
745 388 794	to 8 910	755 962 981	to 3 280	763 917 271	to 7 750	773 202 989	to 3 140
746 446 806	to 6 820	756 035 371	to 5 490	764 125 801	to 5 860	773 208 991	to 9 290
746 818 351	to 8 410	756 301 257	to 1 290	764 284 525	to 4 560	773 231 311	to 1 340
747 245 266	to 5 280	756 371 565	to 1 580	764 526 241	to 6 330	773 348 739	to 8 940
747 364 813	to 4 830	756 876 031	to 6 120	764 601 421	to 1 600	773 348 739	to 8 940
747 501 434	to 1 450	756 876 151	to 6 240	764 650 231	to 0 470	773 575 891	to 5 950
747 739 891	to 0 070	756 970 129	to 0 140	764 984 371	to 4 850	773 852 971	to 3 030
748 148 649	to 8 760	757 059 613	to 9 630	765 003 667	to 3 680	775 373 449	to 3 460
748 259 960	to 9 970	757 078 540	to 8 560	765 042 517	to 2 540	789 257 191	to 7 250
748 565 162	to 5 280	757 086 209	to 6 240	765 194 728	to 4 970	790 448 020	to 8 460
748 874 988	to 5 030	757 240 591	to 0 650	765 387 365	to 7 450	790 597 485	to 7 530
749 137 381	to 7 410	757 277 371	to 7 700	765 541 801	to 2 100	790 911 883	to 1 900
749 190 192	to 0 210	757 291 591	to 2 730	765 638 461	to 8 970	791 057 441	to 7 550
749 685 421	to 5 450	757 964 251	to 4 280	765 647 101	to 7 190	791 239 081	to 9 290
749 846 791	to 6 850	758 067 001	to 7 090	765 813 781	to 4 029	791 374 483	to 4 500
749 993 131	to 3 580	758 105 221	to 5 250	765 879 314	to 9 390	791 387 971	to 8 030
750 071 587	to 1 610	758 324 941	to 5 000	765 954 001	to 4 030	791 447 521	to 7 850
750 408 167	to 8 183	758 593 628	to 3 650	766 120 286	to 0 320	791 451 151	to 1 240
750 438 421	to 8 501	758 709 038	to 9 060	766 125 716	to 5 750	791 500 009	to 0 470
750 743 911	to 4 030	758 744 101	to 4 160	766 158 824	to 8 840	791 771 431	to 1 490
750 779 118	to 9 400	758 850 883	to 0 900	766 388 433	to 8 460	792 004 293	to 4 320
750 910 981	to 1 010	758 860 951	to 1 550	766 509 421	to 9 660	792 018 379	to 8 420
750 960 841	to 0 900	759 152 851	to 2 880	766 572 901	to 3 020	792 070 621	to 0 740
751 296 211	to 6 240	759 740 941	to 1 090	766 748 500	to 8 521	792 145 211	to 5 230
751 539 121	to 9 180	760 004 596	to 4 610	767 024 341	to 4 370	792 391 381	to 1 620
751 541 311	to 1 790	760 118 191	to 8 250	767 326 471	to 6 590	792 452 779	to 2 790
751 757 641	to 7 700	760 155 001	to 5 090	767 332 561	to 2 950	792 772 728	to 2 770
751 936 951	to 7 010	760 378 002	to 8 020	768 009 841	to 9 960	792 903 511	to 3 990
751 951 861	to 1 890	760 692 722	to 2 749	768 011 489	to 1 520	793 282 518	to 2 533
751 999 021	to 9 110	761 055 460	to 5 480	768 177 980	to 7 990	794 041 831	to 2 040
752 139 516	to 9 570	761 169 781	to 9 810	768 391 081	to 1 170	794 397 709	to 7 780
752 182 892	to 2 950	761 504 941	to 5 120	768 661 569	to 1 650	794 581 741	to 2 040
752 206 861	to 7 100	761 516 836	to 6 910	769 000 051	to 0 080	794 592 122	to 2 150
752 295 241	to 5 600	761 613 588	to 3 600	769 050 841	to 0 900	795 032 251	to 2 340
752 731 351	to 1 410	761 688 631	to 8 690	769 159 081	to 9 178	795 796 291	to 6 350
752 767 441	to 7 470	761 805 199	to 5 240	769 737 496	to 7 510	796 070 139	to 0 160
753 008 941	to 9 030	761 826 106	to 6 120	769 778 491	to 8 730	796 143 151	to 3 630
753 194 311	to 4 370	761 881 171	to 1 560	769 827 331	to 7 450	796 159 725	to 9 740
753 620 378	to 0 400	761 975 641	to 5 670	770 216 071	to 6 100	796 169 306	to 9 340
754 013 917	to 3 940	761 975 886	to 5 895	770 723 281	to 3 400	796 373 406	to 3 430
754 161 061	to 1 120	762 304 144	to 4 170	770 790 451	to 0 480	796 602 961	to 3 050
754 358 445	to 8 610	762 324 931	to 4 960	770 915 150	to 5 490	796 708 441	to 8 500
754 410 451	to 0 660	762 439 261	to 9 290	771 455 551	to 5 610	796 886 281	to 6 430
754 438 393	to 8 410	762 524 158	to 4 220	771 609 661	to 9 690	796 901 701	to 2 000
754 493 109	to 3 130	762 584 872	to 4 970	771 932 551	to 2 580	796 975 466	to 5 590
754 664 182	to 4 220	762 593 431	to 3 460	772 057 224	to 7 440	797 272 917	to 2 950
754 816 377	to 6 470	763 155 160	to 5 180	772 162 660	to 3 070	797 519 441	to 9 460
755 487 421	to 7 600	763 178 631	to 8 660	772 718 615	to 8 640	797 519 731	to 0 240
755 592 901	to 3 140	763 506 001	to 6 060	772 940 140	to 0 160	797 535 181	to 5 330
755 790 020	to 0 030	763 522 141	to 2 470	772 970 886	to 0 940	797 646 151	to 6 180
755 791 730	to 1 800	763 717 694	to 7 800	773 009 419	to 9 430	798 040 053	to 0 080
755 926 951	to 7 070	763 826 461	to 6 520	773 112 031	to 2 060	798 055 813	to 5 830
755 934 332	to 4 510	763 900 460	to 0 471	773 125 387	to 5 410	798 055 891	to 5 950

798 326 371	to 6 520	809 189 001	to 9 010	816 945 571	to 5 600	824 588 281	to 8 370
798 339 167	to 9 210	809 886 879	to 6 930	817 253 011	to 3 280	825 140 397	to 0 460
798 562 411	to 2 440	809 890 489	to 0 500	817 763 881	to 4 060	825 409 651	to 9 680
798 632 461	to 2 490	810 323 734 to 3 760		818 330 562	to 0 610	825 472 171	to 2 200
798 807 151	to 7 510	810 367 116	to 7 140	818 459 641	to 9 670	826 042 898	to 2 920
798 944 761	to 5 030	810 526 351	to 6 500	818 926 273	to 6 320	826 226 644	to 6 670
799 118 616	to 8 640	810 806 911	to 6 940	818 950 351	to 0 380	826 582 951	to 3 430
799 133 191	to 3 220	810 807 211	to 7 240	818 962 492	to 2 530	826 720 201	to 0 230
799 177 626	to 7 650	811 423 021	to 3 110	819 032 341	to 2 730	827 005 671	to 5 830
799 854 751	to 5 200	811 517 221	to 7 239	819 127 054	to 7 080	827 287 861	to 7 950
800 044 320 to 4 410		811 721 101	to 1 130	819 278 540	to 8 670	827 291 502	to 1 520
800 211 901	to 2 440	812 025 721	to 5 900	819 544 681	to 4 740	827 575 381	to 5 470
800 427 530	to 7 540	812 093 073	to 3 130	819 928 441	to 8 650	827 609 085	to 9 100
800 872 741	to 2 830	812 100 821	to 0 840	820 034 406 to 4 430		827 619 811	to 9 840
801 349 801	to 9 830	812 465 251	to 5 610	820 070 761	to 1 540	827 883 511	to 3 600
801 676 681	to 7 100	812 918 341	to 8 670	820 191 342	to 1 360	828 160 441	to 0 530
802 967 821	to 7 940	812 918 701	to 8 760	820 274 856	to 4 880	828 376 201	to 6 260
803 217 601	to 7 780	813 050 491	to 0 520	820 600 171	to 0 230	828 441 602	to 1 630
803 729 731	to 9 850	813 073 171	to 3 200	821 172 241	to 2 360	828 539 316	to 9 340
803 747 402	to 7 520	813 398 476	to 8 550	821 229 661	to 9 720	828 539 341	to 9 370
804 138 181	to 8 420	813 713 971	to 4 000	821 229 743	to 9 780	828 732 331	to 2 390
804 428 224	to 8 250	813 858 121	to 8 150	821 903 731	to 3 910	828 807 781	to 7 840
804 682 411	to 2 710	814 789 330	to 9 349	821 927 841	to 7 850	828 830 952	to 0 963
805 272 525	to 2 540	814 984 656	to 4 680	822 505 801	to 5 830	828 939 781	to 0 050
805 523 445	to 3 460	815 016 020	to 6 030	822 703 442	to 3 470	829 002 721	to 2 870
805 745 704	to 5 730	815 199 410	to 9 420	822 900 991	to 1 020	829 005 301	to 5 540
806 452 907	to 2 980	815 240 491	to 0 520	822 925 951	to 6 100	829 080 241	to 0 330
806 744 781	to 4 850	815 755 591	to 5 620	823 284 931	to 4 990	829 160 986	to 1 000
806 982 181	to 2 300	815 755 622	to 5 650	823 293 031	to 3 210	829 176 841	to 6 930
807 764 791	to 4 910	815 806 381	to 6 680	823 556 011	to 6 100	829 471 561	to 1 590
808 089 931	to 9 960	816 126 834	to 6 870	824 078 341	to 8 370	829 561 065	to 1 080
808 656 423	to 6 450	816 156 721	to 6 780	824 156 325	to 6 340	829 566 481	to 6 510
808 753 771	to 3 800	816 580 903	to 0 920	824 511 252	to 1 270	829 569 931	to 9 960

— Criminal Investigations Group,
Postal Inspection Service, 2-16-17

Verifying U.S. Postal Service Money Orders

Follow these steps to cash a Postal Service™ money order:

1. Check that the amount does not exceed the legal limit: \$1,000 for domestic, and \$700 for international postal money orders.
2. Check that the proper security features are present:
 - When held to the light, a watermark of Benjamin Franklin is repeated from top to bottom on the left side.
 - When held to the light, a dark line (security thread) runs from top to bottom with the word “USPS” repeated.
 - There should be no discoloration around the dollar amounts, which might indicate the amounts were changes.

These appear in Postal Service Notice 299, *U.S. Postal Money Order Reference Card*, or online at <https://www.usps.com/shop/money-orders.htm>.

3. If the money order seems suspicious, call the U.S. Postal Service Money Order Verification System at 866-459-7822.

Please provide this information to local banks and retailers, as they also receive Postal Service money orders for cashing.

— *Retail and Customer Service Operations, 2-16-17*

Counterfeit Canadian Money Order Forms

Do Not Cash

To be posted and used by retail window employees. As directed, destroy previous notices. Destroy all interim notices when the numbers listed appear in the *Postal Bulletin*.

671,819,086	683,594,542	687,262,503
676,612,640	684,683,610	687,262,525
677,891,039	686,619,878	687,262,526
678,282,493	686,619,886	687,287,578
678,916,031	686,619,887	687,287,581
679,552,215	686,794,382	687,287,582
679,694,334	686,794,426	694,063,898
679,751,983	686,794,427	694,063,899
679,800,207	686,794,431	694,063,980
681,130,536	687,262,502	701,321,725
681,844,376		

— *Criminal Investigations Group,
Postal Inspection Service, 2-16-17*

Toll-Free Number Available to Verify Canadian Money Orders

The Canada Post Corporation is now providing a toll-free number that cashing agents can call to verify the validity of Canadian Postal Money Orders. The number is 800-563-0444.

This toll-free number is printed on the back of the Canadian Postal Money Orders.

— *Criminal Investigations Group,
Postal Inspection Service, 2-16-17*

Other Information

Overseas Military/Diplomatic Mail

Mail addressed to military and diplomatic post offices overseas is subject to certain conditions or restrictions of mailing regarding content, preparation, and handling. The APO/FPO/DPO table below outlines these conditions by APO/FPO/DPO ZIP Codes™ through the use of footnoted mailing restrictions codes (see the [Restrictions](#) page following the table).

Acceptance clerks must use the table with the RSS terminal to determine which APO/FPO/DPO ZIP Codes are active and which conditions of mailing apply. Inquiries may be sent to the Military Postal Service Agency at <https://amps.usps.gov/jy2/frm.htm>.

The entries under “Changes” appear in bold in the APO/FPO/DPO table starting below.

Changes

APO/FPO/DPO	Action	Effective Date	See Restrictions
DPO AE 09624	Add I3, Z	02/16/2017	B-C-F-F1-F3-I3-J-L-N-R-R1-T-U-V-Z-Z1

We have eliminated “Not Active” entries from the table below to save space and paper.

APO/FPO/DPO Table

APO/ FPO/ DPO	See Restrictions	APO/ FPO/ DPO	See Restrictions	APO/ FPO/ DPO	See Restrictions	APO/ FPO/ DPO	See Restrictions
09001	B-C-D-E3-F1-F3-H-H1-I3-J-L-M-R-R1-S-T-V-X-Z-Z1	09055	B-C-D-E-F-H-M-R-R1-U-V	09143	B-C-D-E-F3-H-M-R-S-U	09304	A-B-C-C1-D-E2-F-F1-F3-H1-J-L-M-N-R-R1-T-V-Z1
09003	B-C-D-E-F3-H-M-P-R-S-U	09060	B-C-D-E-F1-F3-H-M-R-S-U-Z1	09154	B-C-D-E-F3-H-M-R-S-U	09305	A-B-C1-E2-F-F1-H1-I3-M-N-R-R1-T-V-Z-Z1
09004	B-C-D-E-F3-H-M-R-S-U	09067	B-C-D-E-F3-H-M-R-S-U	09160	B-C-D-F-F1-F3-H-J-L-M-N-R-R1-T-U-V-Z1	09306	A-B-C1-E2-F-F1-F3-H1-R-R1-U2-V-Z1
09005	B-C-D-E-F3-H-M-P-R-S-U	09068	B-C-D-E-H-U-Z1	09161	A-B-C-E1-F-F1-M-N-R-R1-S-V	09307	B-N-V-Z1
09006	B-C-D-E-F3-H-M-R-S-U	09069	A-B-C-D-E-H-N-U-V	09172	B-C-D-E-F3-H-M-R-S-U	09308	A-B-C1-E2-F-F1-F3-H1-I3-M-N-R-R1-T-V-Z-Z1
09008	B-C-F-F3-R-U-V-Z1	09079	B-C-D-E-F3-H-M-R-S-U	09173	B-C-D-E-F3-H-M-R-S-U	09309	A-B-C-C1-E2-F-H1-M-N-R-V-Z1
09009	B-C-D-E-F3-H-M-R-S-U-Z1	09090	B-C-D-E-F3-H-M-R-S-U	09177	B-C-D-E-F3-H-M-R-S-U	09310	A-B-C1-E2-F-F1-F3-H1-I3-J-L-M-N-R-R1-T-U4-V-Z-Z1
09011	B-C-D-E-F3-H-M-R-S-U	09094	B-C-D-F3-H-M-P-R-S-Z1	09180	B-C-D-F3-H-M-R-S-U	09311	A-B-C1-E2-F-F1-F3-H1-I3-J-L-M-N-R-R1-T-U4-V-Z-Z1
09012	B-C-D-E-F3-H-M-R-S-U-Z1	09095	B-C-D-E-H-M-R-U	09186	B-C-D-E-F3-H-M-P-R-S-U	09312	A-B-C1-E2-F-F1-F3-H1-I3-J-L-M-N-R-R1-T-U4-V-Z-Z1
09013	B-C-D-E-F-F1-H-M-R-U-Z1	09096	B-C-D-E-F3-H-M-R-S-U	09203	A-B-C-C1-F-F1-F3-I3-J-L-M-N-R-R1-T-V-X-Z-Z1	09313	A-B-C-C1-E2-F-F1-F2-H1-R-R1-V-Z1
09014	B-C-D-E-F3-H-M-P-R-S-U	09103	B-C-D-E-H-U	09204	B-C-F3-M-N-R-S-V-Z1	09315	A-B-C1-E2-F-F3-N-R-R1-V-Z1
09016	B-C-D-E-F1-H-M-R-S-U	09104	B-C-D-F3-H-M-R-S-U-Z1	09211	B-C-D-E-F3-H-M-P-R-S-U	09316	A-B-C1-E2-F-F1-F3-H1-I3-M-N-R-R1-T-V-Z-Z1
09017	B-C-D-E-F1-H-M-R-S-U	09107	B-C-D-E-F3-H-M-R-S-U	09213	B-C-D-F-F1-F3-H-J-L-M-N-R-R1-T-U-V-Z1	09319	A-B-C-C1-E2-F-F1-F2-H1-R-R1-U2-V-Z1
09018	A-B-F-H-N-Q-V-Z-Z1	09112	B-C-D-E-F3-H-M-R-S-U	09214	B-C-D-E-F3-H-M-R-S-U-Z1	09320	A-B-C1-E2-F-F3-H1-M-N-R-R1-V-Z1
09020	B-C-D-E-F3-H-M-R-S-U	09114	B-C-D-E-F3-H-M-R-S-U	09227	B-C-D-E-F3-H-M-R-S-U	09321	A-B-C1-E2-F-H1-M-N-R-R1-V-Z1
09021	B-C-D-E-F3-H-M-R-S-U-Z1	09123	B-C-D-E-F3-H-M-R-S-U-Z1	09250	B-C-D-E-F3-H-M-R-S-U	09330	A-B-C1-E2-F-F1-F3-H1-M-R-R1-V-Z1
09028	B-C-D-E-F1-H-M-R-S-U	09125	A-B-C-F-F1-F3-H-N-O-R-R1-S-V-V1	09261	B-C-D-E-F3-H-M-R-S-U-V-Z1	09333	A-B-C1-E2-F-F1-F3-H1-I3-M-N-R-R1-V-Z-Z1
09034	B-C-D-E-F3-H-M-R-S-U	09126	B-C-D-F3-H-M-P-R-S-Z1	09263	B-C-D-E-F3-H-M-R-S-U		
09044	B-C-D-F1-H-U	09128	B-C-D-E-F3-H-M-R-S-U	09264	B-C-D-E-F3-H-M-R-S-U		
09046	B-C-D-E-F3-H-M-R-S-U	09131	B-C-D-E-F3-H-M-R-S-U	09265	B-C-D-F-F1-H-J-L-M-N-R-T-U-V-Z1		
09049	B-C-D-E-F3-H-M-R-S-U	09136	B-C-D-E-F1-F3-H-M-P-R-S-U	09301	A-B-C1-E2-F-F1-F3-H1-I3-J-L-M-N-R-R1-T-U4-V-Z-Z1		
09053	B-C-D-E-F3-H-M-R-S-U	09138	B-C-D-F3-H-M-R-S-U	09302	A-B-C1-F-F1-H-M-N-V-Z-Z1		
09054	B-C-D-E-F3-H-M-R-S-U	09140	B-C-D-E-F3-H-M-R-S-U				
		09142	B-C-D-E-F3-H-M-R-S-U				

APO/ FPO/ DPO	See Restrictions	APO/ FPO/ DPO	See Restrictions	APO/ FPO/ DPO	See Restrictions	APO/ FPO/ DPO	See Restrictions		
09337	A-B-C1-E2-F-F1-F3-H1-M-R-R1-V-Z1	09507	B-V	09591	B-E2-E3-F-F1-F2-F3-R-R1-V-Z1	09701	A-B-B2-C1-F-F1-F3-J-L-M-N-R-R1-T-V-Z1		
09340	A-B-C1-F-H-N-R-V	09508	B-F-F1-R-R1-V	09592	B-F-F1-R-R1-V	09702	B-C-C1-F1-M-R-R1-U		
09343	A-B-C1-F-M-N-V-Z1	09509	B-F-F1-R-R1-V	09593	B-F-F1-F3-R-S-V	09703	B-C-D-F1-H-U		
09347	A-B-C1-E2-F-H1-M-R-R1-V-Z1	09510	A-B-C1-E2-F-H1-M-R-R1-V-Z1	09594	B-F-F1-R-R1-V	09704	B-C-O-V-V1		
09348	A-B-C1-E2-F-F1-F3-H1-I3-M-N-R-R1-T-V-Z-Z1	09511	B-F-F1-R-R1-V	09595	B-F-F1-R-R1-V	09705	B-C-C1-F1-M-R-R1-U		
09351	A-B-C1-E2-E3-F-F1-F3-H-H1-I3-M-N-R-R1-S-T-V-X-Z-Z1	09513	B-F-F1-R-R1-V	09596	B-F-F1-R-R1-V	09706	B-C-F3-M-N-R-S-U-V-Z1		
09352	A-B-C1-E2-F-F3-H1-M-R-R1-V-Z1	09517	B-F-F1-R-R1-V	09599	B-F-F1-R-R1-V	09707	B-C-F-F1-F3-J-L-M-N-R-R1-T-V-Z1		
09354	A-B-C1-E2-F-F3-H1-M-R-R1-V-Z1	09520	B-F-F1-R-R1-V	09600	B-C-F-F1-F3-R-U-Z1	09708	B-C-C1-F1-M-R-R1-U		
09355	A-B-C1-E2-F-F3-H1-M-R-R1-V-Z1	09522	B-V	09601	B-B2-E1-F-F1-F3-I3-J-L-N-R-R1-S-T-V-X-Z-Z1	09709	B-B2-C1-E2-F-F1-F3-H-H1-J-L-N-R-R1-T-V-Z1		
09356	A-B-C1-E2-F-F3-H1-M-N-R-V-Z1	09523	B-F-F1-R-R1-V	09602	B-C-F-F1-N-R-U-V	09710	B-C-C1-F-F1-J-L-M-N-R-R1-T-U-V-Z1		
09357	A-B-C1-E2-F-F3-H1-M-R-V-Z1	09524	B-F-F1-R-R1-V	09603	B-C-F-F1-F3-R-S-U-V-Z1	09711	A-B-F-F1-F3-N-R-R1-S-V-Z1		
09363	A-B-C1-E2-F-F3-H1-M-R-V-Z1	09532	B-F-F1-R-R1-V	09604	B-C-F-F1-F3-P-R-S-U-V-Z1	09712	A-B-F-F3-H-R-U-V-Z1		
09365	A-B-C-C1-E2-F-F3-H1-M-N-R-V-Z1	09534	B-F-F1-R-R1-V	09605	B-C-D-H-M-R-U-V	09714	B-C-C1-F1-M-R-R1-U		
09366	A-B-C1-E2-F-F1-F3-H-H1-M-R-R1-V-Z1	09543	B-F-F1-R-R1-V	09606	B-C-D-H-M-R-U-V	09715	B-F-F1-J-L-M-N-R-T-V-Z1		
09378	A-B-C1-E2-F-F1-F3-H1-I3-M-N-R-R1-T-V-Z-Z1	09550	B-F-F1-R-R1-V	09607	A-B-C-F-F1-F3-M-N-R-R1-U-U3-V-W-Z1	09716	B-C-F-F1-F3-J-L-M-N-R-R1-T-V-Z1		
09381	A-B-C1-E2-F-F1-F3-H1-I3-M-N-R-R1-T-V-Z-Z1	09554	B-F-F1-R-R1-V	09608	B-C-F-F3-N-R-U-V-Z1	09717	A-B-F3-M-R-S-V-W-Z1		
09403	B-C-C1-F3-M-R-S-U-Z1	09556	B-F-F1-R-R1-V	09609	B-C-F-F3-R-U-Z1	09718	B-F-F1-J-L-M-N-R-T-U-V-Z1		
09421	B-C-C1-F3-M-R-S-U-Z1	09564	B-F-F1-R-R1-V	09610	B-C-F-F1-F3-M-R-S-U-V-Z1	09719	B-C-D-F3-M-R-S-U-V-Z1		
09447	B-C-C1-F3-M-R-S-U-V-Z1	09565	B-F-F1-R-R1-V	09613	B-C-F-N-U-V	09720	B-M-R-S-U-V-Z1		
09454	B-C-C1-F3-M-R-S-U-V-Z1	09566	B-E2-E3-F-F1-F3-R-R1-V-Z1	09617	B-C-F-F3-R-U-Z1	09722	A-B-F-H-N-Q-V-Z-Z1		
09459	B-C-C1-F3-M-R-S-U-Z1	09567	B-E2-E3-F-F1-F3-R-R1-V-Z1	09618	B-C-F-F3-R-U-Z1	09723	B-F-F1-F3-J-L-M-N-R-R1-T-V-Z1		
09461	B-C-C1-F3-M-P-R-S-U-Z1	09568	B-V	09620	B-C-F-R-U-Z1	09724	B-C-C1-F1-M-R-R1-U		
09463	B-C-C1-F3-M-R-S-U-Z1	09569	B-E2-E3-F-F1-F3-R-R1-V-Z1	09621	B-C-F-F3-R-U-Z1	09725	A-B-F-F3-H-N-O-Q-S-V-V1-Z-Z1		
09464	B-C-C1-F3-R-S-U-Z1	09570	B-F-F1-R-R1-V	09622	B-C-F-F3-R-U-Z1	09726	B-F-F1-J-L-M-N-R-T-U-V-Z1		
09468	B-C-C1-F3-M-R-S-U-Z1	09573	B-E2-E3-F-F1-F3-R-R1-V-Z1	09623	B-C-F-F3-R-U-V-Z1	09727	A-B-B2-C-C1-D-F-F1-F3-J-L-M-N-R-R1-T-V-Z1		
09469	B-C-C1-R-U-Z1	09574	B-F-F1-R-R1-V	09624 B-C-F-F1-F3-I3-J-L-N-R-R1-T-U-V-Z-Z1	09626	B-C-F-F3-R-U-Z1	09728	A-B-B2-C-C1-F-F1-F3-J-L-N-R-R1-T-V-Z1	
09470	B-C-C1-M-R-U-Z1	09575	B-F-F1-R-R1-V	09625	B-C-F-F3-N-R-U-Z1	09627	B-C-F-F3-R-U-V-Z1	09729	B-C-F-F3-N-R-R1-U-V-Z1
09494	B-C-C1-F3-M-R-S-U-Z1	09576	B-F-F1-R-R1-V	09626	B-C-F-F3-R-U-Z1	09630	B-C-F-U-V	09730	A-B-B2-C-C1-F-F1-F3-J-L-M-N-R-R1-T-V-Z1
09498	B-C-C1-F-F1-F3-J-L-N-R-R1-T-V-Z1	09577	B-V	09627	B-C-F-F3-R-U-V-Z1	09631	B-C-F-F3-R-U-V-Z1	09731	A-B-B2-C-C1-F-F1-F3-J-L-M-N-R-R1-T-V-Z1
09501	B-V	09578	B-E2-E3-F-F1-F3-R-R1-V-Z1	09633	B-B2-C-D-F-F1-M-R-U-U1-U2-U3-V-Z1	09642	B-F-F1-F3-J-L-M-N-R-T-U-V	09732	B-N-V-Z1
09502	B-V	09579	B-F-F1-R-R1-V	09636	B-C-F-F3-R-U-V-Z1	09643	B-C-F3-M-R-S-U-V-Z1	09733	B-I3-L-N-V
09503	B-F-F1-R-R1-V	09581	B-F-F1-R-R1-V	09644	B-F-F1-F3-J-L-M-N-R-T-U-V	09645	B-C-F-F1-F3-R-U-Z1	09734	A-B-C-C1-F-F1-F3-I3-J-L-M-N-R-R1-T-V-Z-Z1
09504	B-V	09582	B-E2-E3-F-F1-F3-R-R1-V-Z1	09647	B-F3-M-N-R-U-Z1	09648	B-F3-N-R-U-V-Z1	09735	B-N-V-Z1
09505	B-V	09583	B-F-F1-R-R1-V	09648	B-F3-N-R-U-V-Z1	09649	B-F3-N-R-U-Z1	09736	A-B-B2-C-C1-D-F-F1-F3-J-L-M-N-R-R1-T-V-Z1
09506	B-V	09586	B-F-F1-R-R1-V						
		09587	B-E2-E3-F-F1-F3-R-R1-S-V-Z1						
		09588	B-C-E2-E3-F-F1-F3-H-R-R1-S-V-Z1						
		09589	B-F-F1-F3-R-S-V						
		09590	B-V						

APO/ FPO/ DPO	See Restrictions	APO/ FPO/ DPO	See Restrictions	APO/ FPO/ DPO	See Restrictions	APO/ FPO/ DPO	See Restrictions
09737	A-B-B2-C-C1-F-F1-F3-I3-J-L-M-N-R-R1-T-V-W-Y-Z-Z1	09805	B-E2-E3-F-F1-F3-R-R1-Z1	09837	B-E2-E3-F1-F3-V-Z1	34004	B-F-F1-F3-J-L-N-R-R1-T-V-Z1
09738	A-B-B2-C-C1-D-F-F1-F3-J-L-M-N-R-R1-T-V-Z1	09806	A-B-C1-E2-F-F1-F3-H1-J-L-M-N-R-R1-T-V-Z1	09838	B-E2-E3-F-F1-F3-U-Z1	34007	B-F-F1-H-J-M-N-R-R1-V-Z1
09739	A-B-B2-C-C1-D-F-F1-F3-J-L-M-N-R-R1-T-V-Z1	09807	A-B-B2-C1-E2-F-F1-F3-I3-J-L-N-R-R1-T-V-Z-Z1	09839	A-B-U-V-Z1	34008	B-B2-D-E1-F-F1-H-H1-J-L-M-N-R-R1-T-V-Z1
09741	A-B-C1-E2-F-F1-F3-H1-J-L-M-N-R-R1-T-V-W-Y-Z1	09808	A-B-B2-C1-E2-F-F1-F3-H-H1-J-L-N-R-R1-T-V-Z1	09842	A-B-F-F1-F3-J-L-N-R-R1-T-V-Z1	34011	B-B2-C1-E2-F-F1-F3-J-L-M-N-R-R1-T-V-Z1
09742	A-B-B2-F-F1-F3-J-L-M-N-R-R1-T-V-Z1	09809	B-F-F1-F3-J-L-N-T-V-Z1	09844	A-B-C1-F-F1-F3-J-L-M-N-R-R1-T-V-Z1	34020	B-F-F1-F3-J-L-M-N-R-R1-T-V-Z1
09743	A-B-F-H-N-Q-V-Z-Z1	09810	A-B-F-F1-F3-N-R-S-V-Z1	09845	A-B-B2-E3-F-F1-F3-J-L-M-N-R-R1-T-V-Z1	34021	B-F-F1-F3-T-J-L-M-N-R-R1-V-Z1
09744	A-B-B2-C-C1-F-F1-F3-J-L-M-N-R-R1-T-V-Z1	09811	B-E2-E3-F-F1-F3-H1-N-R-R1-U-V-Z1	09846	A-B-B2-C1-F-F1-F3-J-L-N-R-R1-T-V-Z1	34022	B-F-F1-F3-J-L-M-N-R-R1-T-V-Z1
09745	A-B-F-F1-F3-M-N-R-R1-S-V-Z1	09812	B-E2-E3-F-F1-I-J-L-N-R-T-U-V-Z-Z1	09848	A-B-F-M-R-V-Z1	34023	B-F-F1-F3-J-L-M-N-R-R1-T-V-Z1
09747	B-F-J-N-U-V-Z1	09813	B-E2-E3-F-F1-F3-I3-J-L-N-R-T-U-V-Z-Z1	09851	A-B-C-F-F3-N-R-S-V-Z1	34024	B-F-F1-F3-J-L-M-N-R-R1-T-V-Z1
09748	A-B-B2-C-C1-D-F-F1-F3-J-L-M-N-R-R1-T-V-Z1	09814	B-E2-E3-F-F1-F3-I3-J-L-N-R-R1-T-V-Z-Z1	09852	B-E2-E3-F-F1-F3-H1-N-R-R1-U-V-Z1	34025	B-F-F1-F3-J-L-M-N-R-R1-T-V-Z1
09749	A-B-F-H-N-U-V-Z1	09815	A-B-F-F3-N-R-S-V-Z1	09853	B-E2-F-H1-R-R1-U2-V-Z1	34030	B-F-F1-F3-J-L-M-N-R-R1-T-V-Z1
09750	A-B-B2-C-C1-F-F1-F3-J-L-M-N-R-R1-T-V-Z1	09816	A-B-B2-C-C1-E2-E3-F-F1-F3-J-L-N-R-R1-T-V-Z1	09854	A-B-B2-C1-F-F1-F3-I3-L-N-R-R1-T-V-Z-Z1	34031	B-F-F1-F3-J-L-M-N-R-R1-T-V-Z1
09751	B-C-D-E-F3-H-M-R-S-U	09817	A-B-B2-C1-E2-E3-F-F1-F3-H-H1-J-L-M-N-R-R1-T-V-Z1	09855	A-B-C1-E2-F-F1-H1-M-R-R1-U2-V-Z1	34032	B-F-F1-F3-J-L-M-N-R-R1-T-V-Z1
09752	B-C-D-F1-H-U	09818	A-B-C-F-F3-M-S-V-Z1	09858	B-C1-E2-E3-F-F1-F3-H1-N-R-R1-U-V-Z1	34033	B-C-F-F1-F3-J-L-M-N-R-R1-T-V-Z1
09753	A-B-F-N-V-Z1	09820	A-B-B2-F-F1-F3-H-H1-J-L-M-N-R-R1-T-V-Z1	09859	B-C1-E2-E3-F-F1-F3-H1-R-R1-U-V-Z1	34034	B-F-F1-F3-J-L-M-N-R-R1-T-V-Z1
09754	A-B-F-H-N-Q-V-Z-Z1	09821	A-B-C-F-F3-N-R-S-V-Z1	09861	A-B-F-F1-F3-N-R-R1-S-V-Z1	34035	B-F-F1-F3-H-J-L-M-N-R-R1-T-V-Z1
09755	A-B-B2-C-C1-D-F-F1-J-L-M-N-Q-R-R1-T-V-Z1	09822	A-B-C-F-F3-M-R-S-V-Z1	09863	A-B-F-F1-F3-N-O-R-R1-S-V-Z1	34036	B-F-F1-F3-J-L-M-N-R-R1-T-V-Z1
09756	A-B-B2-E3-F-F1-J-L-N-Q-R-R1-T-V-Z1	09823	A-B-F-F1-F3-J-L-N-R-R1-T-V-Z1	09865	A-B-F3-R-U-V-Z1	34037	B-C-F-F1-F3-H-J-L-M-N-R-R1-T-V-Z1
09758	A-B-F-F1-M-N-R-R1-V-Z1	09824	A-B-C-F-F3-M-R-S-V-Z1	09868	A-B-E2-F-N-U-V-Z1	34038	B-L-M-N-U-V-Z1
09759	A-B-B2-C-C1-E2-F-F1-F3-J-L-N-R-R1-T-V-Z1	09825	A-B-C1-F-F1-F3-J-L-M-N-R-R1-T-V-Z1	09870	A-B-C1-E2-F-F1-F3-H1-I3-J-L-M-N-R-R1-T-U4-V-Z-Z1	34039	B-F-F1-J-L-M-N-T-V-Z1
09760	A-B-B2-C-C1-D-F-F1-J-L-M-N-Q-R-R1-S-T-V-Z1	09826	A-B-B2-C1-E1-E2-E3-F-F1-F3-J-L-M-N-R-R1-T-V-W-Z1	09873	A-B-C1-E2-F-F1-F3-H1-I3-J-L-M-N-R-R1-T-U4-V-Z-Z1	34041	B-F-F1-F3-J-L-M-N-R-R1-T-V-Z1
09761	B-F-F1-F3-M-N-R-R1-V-Z-Z1	09827	A-B-F-F1-J-L-M-N-R-T-V-Z1	09874	A-B-C1-E2-F-F1-F3-H1-I3-J-L-M-N-R-R1-T-U4-V-Z-Z1	34042	A-B-C-F-F1-M-N-R-U-V-W-Z1
09762	A-B-B2-E3-F-F1-F3-J-L-N-R-R1-T-V-Z1	09828	A-B-F-F1-F3-I3-J-L-N-R-R1-T-V-Z-Z1	09875	A-B-C1-E2-F-F1-F3-H1-I3-J-L-M-N-R-R1-T-U4-V-Z-Z1	34055	B-F-F1-F3-J-L-M-N-R-R1-T-V-Z1
09769	A-B-B2-C-C1-D-F-F1-F3-J-L-M-N-R-R1-T-V-Z1	09829	B-C-N-R-V-Z1	09880	A-B-C1-E2-F-F1-H1-N-R-R1-U-V-Z1	34058	B-F-F1-R-R1-V-Z1
09777	A-B-C-E1-F-F1-F3-L-M-N-R-R1-T	09830	B-C-F-F1-F3-J-L-M-N-R-R1-S-T-V-Z1	09890	B-E2-F-H1-N-R-R1-U2-V-Z1	34060	B-B2-C1-E2-F-F1-F3-J-L-N-R-R1-T-V-Z1
09780	A-B-F-H-N-R-V	09831	B-F-F1-F3-J-L-N-R-R1-T-V-Z1	09892	A-B-E2-F-F1-F3-J-L-N-R-R1-T-V-Z1	34078	B-F1-N-V-Z1
09789	A-B-F-F3-N-R-S-V-Z1	09832	B-C1-E2-F1-F3-U1-Z1	09895	A-B-B2-C1-E2-F-F1-F3-J-L-N-R-T-V-W-Z1	34080	B-F-F1-R-R1-V
09801	A-B-C1-E2-F-H1-M-N-R-R1-V-Z1	09833	B-C1-E2-F1-F3-U1-V-Z1	09898	B-C-C1-E2-F-F1-F3-H1-N-R-R1-U2-V-Z1	34081	B-F-F1-R-R1-V
09803	B-E2-E3-F-F1-F3-H1-N-R-R1-U-V-Z1	09834	B-E2-E3-F-F1-F3-R-R1-U-Z1	34001	A-B-F-F1-F3-I3-J-L-N-R-R1-T-V-Z-Z1	34082	B-F-F1-R-R1-V
09804	A-B-F-F1-F3-M-N-R-S-V-Z1	09835	A-B-C1-F1-F3-N-V-Z1	34002	B-F-F1-F3-J-L-N-R-R1-T-V-Z1	34083	B-F-F1-R-R1-V
		09836	A-B-C-F-F1-F3-J-L-M-N-R-R1-V-Z1			34084	B-F-F1-R-R1-V
						34085	B-F-F1-R-R1-V
						34086	B-F-F1-R-R1-V
						34087	B-F-F1-R-R1-V

APO/ FPO/ DPO	See Restrictions	APO/ FPO/ DPO	See Restrictions	APO/ FPO/ DPO	See Restrictions	APO/ FPO/ DPO	See Restrictions
34088	B-F-F1-R-R1-V	96321	B-F-F1-F2-H-M-W-Z1	96511	B-I3-N-V	96611	B-E2-F-H1-R1-U2-V-Z1
34089	B-F-F1-R-R1-V	96322	B-F-F1-F2-H-M-W-Z1	96515	B-D-F-U3	96612	B-V
34090	B-F-F1-R-R1-V	96323	B-C-M-R-V-W	96516	B-D-F-Z1	96613	B-V
34091	B-E2-E3-F-F1-F3-R-R1-V-Z1	96326	B-C-F-M-R-W	96517	B-F-U3-V-Z1	96615	B-F-F1-R-R1-V
34092	B-F-F1-R-R1-V	96328	B-C-M-R-W	96520	B-F-N-U3-V	96616	B-F-F1-R-R1-V
34093	B-F-F1-R-R1-V	96330	B-C-M-R-W	96521	B-F-F1-J-L-N-T-U3-V-Z1	96617	B-F-F1-R-R1-V
34094	B-F-F1-R-R1-V	96331	B-M-W	96530	A-B-F-F1-H-H1-J-L-M-N-T-U-V-Z1	96619	B-V
34095	B-F-F1-R-R1-V	96336	B-C-M-R-V-W	96531	A-B-C-F-F1-H-M-N-R-U-V	96620	B-F-F1-R-R1-V
96201	A-B-F1	96337	B-M-W	96532	A-B-F-F1-H-J-L-M-N-T-U-V-Z1	96628	B-F-F1-R-R1-V
96202	A-B-F1-U	96338	A-B-F3-M-R-S-W	96533	A-B-F-F1-H-J-L-M-N-T-U-V-Z1	96629	B-F-F1-R-R1-V
96203	A-B-F1	96339	B-M-V-W	96534	A-B-F-U-Z1	96632	B-F-F1-R-R1-V
96204	A-B-F1	96343	B-M-W	96535	A-B-F-F1-J-L-N-T-V-Z1	96643	B-F-F1-R-R1-V
96205	A-B-F1-U	96346	B-F-F1-F2-H-M-V-W-Z1	96537	B-V-Z1	96649	B-F-F1-R-R1-V
96206	A-B-F1-U	96347	B-F-F1-F2-H-M-W-Z1	96540	B-V-Z1	96650	B-F-F1-R-R1-V
96207	A-B-F1-V	96349	B-F-F1-F2-H-M-W-Z1	96542	B-V-Z1	96657	B-F-F1-R-R1-V
96208	A-B-F1-U	96350	B-F-F1-F2-H-M-W-Z1	96543	B-P-V-Z1	96660	B-F-F1-R-R1-V
96209	A-B-F-F1-J-L-N-T-U-V-Z1	96351	B-F-F1-F2-H-M-W-Z1	96546	B-F-N-R-U3	96661	B-F-F1-R-R1-V
96210	A-B-B2-C1-F-F1-F3-I3-L-N-R-R1-T-V-Z-Z1	96362	B-F-F1-F2-M-W-Z1	96548	A-B-H-M-R-U	96662	B-F-F1-R-R1-V
96212	B-F-F1-F2-H-M-W-Z1	96365	B-C-M-R-V-W	96549	A-B-F-F1-H-J-L-M-N-T-U-V-Z1	96663	B-F-F1-R-R1-V
96213	A-B-C-F1-R-U	96367	B-C-L-M-R-W	96550	A-B-H-M-U-V-Z1	96664	B-V
96214	A-B-C-F1-R-U	96368	B-C-M-R-W	96551	A-B-F-F1-H-J-L-M-N-T-U-V-Z1	96665	B-V
96218	A-B-F1-U	96370	B-F-F1-F2-H-M-W-Z1	96552	B-Z1	96666	B-V
96224	A-B-F1-U	96372	B-M-W	96553	A-B-F-F1-H-M-R-U	96667	B-F-F1-R-R1-V
96251	A-B-F1-U	96373	B-M-W	96554	A-B-F-F1-H-J-L-M-N-T-U-V-Z1	96668	B-F-F1-R-R1-V
96257	A-B-F1-U	96374	B-M-W	96555	B-F-M-V	96669	B-F-F1-R-R1-V
96258	A-B-F1-U	96375	B-M-W	96557	B-F-M-V	96670	B-V
96260	A-B-F1-U	96376	B-M-W	96562	A-B-B2-C-C1-D-E2-E3-F-F1-H-H1-I3-L-M-N-R-T-V-Z-Z1	96671	B-F-F1-R-R1-V
96264	A-B-C-F1-R-U	96377	B-M-W	96577	A-B-F-H-M-N-R-U	96672	B-F-F1-R-R1-V
96266	A-B-C-F1-R-U	96378	B-M-W	96578	B-B2-F1-H-J-N-R	96673	B-V
96267	A-B-C-F1-R-U-V	96379	B-M-W	96595	B-F-S-V-Z1	96674	B-F-F1-R-R1-V
96269	A-B-F1-U-Z1	96380	B-M-W	96598	B-N-O-V-V1	96675	B-F-F1-R-R1-V
96271	A-B-F1-F3-S-U	96382	B-M-W	96599	B-N-V	96677	B-F-F1-R-R1-V
96275	A-B-F1-U	96384	B-M-W	96601	B-V	96678	B-F-F1-R-R1-V
96276	A-B-C-F1-R	96385	B-M-W	96602	B-V	96679	B-F-F1-R-R1-V
96278	A-B-C-F1-R-U	96386	B-M-W	96603	B-V	96681	B-V
96283	A-B-F1-U	96387	B-M-W	96604	B-V	96682	B-V
96284	A-B-F1-U	96388	B-M-W	96605	B-V	96683	B-V
96301	B-M-S-W	96389	B-M-W	96606	B-V	96686	B-V
96303	B-F-F1-H-J-L-M-N-T-V-W-Z1	96401	B-C-F-N-O-R-V-V1-Z1	96607	B-V	96691	B-F-F1-R-R1-V
96306	B-F-F1-F2-H-M-W-Z1	96501	A-B-N-V	96608	B-E2-F-H1-R1-U2-V-Z1	96692	B-F-F1-R-R1-V
96309	B-C-M-R-V-W	96504	A-B-C-C1-F-F1-F3-I3-L-N-R-R1-T-V-W-Z-Z1	96609	B-E2-F-H1-R1-U2-V-Z1	96693	B-F-F1-R-R1-V
96310	B-M-W	96505	A-B-C-C1-F-F1-F3-I3-L-N-R-R1-T-V-W-Z-Z1	96610	B-E2-F-H1-R1-U2-V-Z1	96694	B-F-F1-R-R1-V
96319	B-C-M-R-W	96507	A-B-F-F1-H-J-L-N-T-V-Z1			96695	B-F-F1-R-R1-V
		96510	B-I3-N-V			96696	B-F-F1-R-R1-V
						96698	B-V

RESTRICTIONS

LEGEND

PS Form 2976, *Customs — CN 22 (Old C 1) and Sender's Declaration* (green label)

PS Form 2976-A, *Customs Declaration and Dispatch Note*

PS Form 2976-B, *Priority Mail Express International Shipping Label and Customs Form*

ATF	= Bureau of Alcohol, Tobacco, Firearms, and Explosives
Box C	= Department of State (DOS) contractor personnel
Box R	= Retired military personnel
DPO	= Diplomatic Post Office
MPO	= Military Post Office
PACT	= Prevent All Cigarette Trafficking Act
PAL	= Parcel Airlift
PMEMS	= Priority Mail Express Military Service
PUB 52	= Publication 52, <i>Hazardous, Restricted, and Perishable Mail</i>
SAM	= Space Available Mail
USDA	= United States Department of Agriculture

Note: Mail order catalogs are prohibited as SAM or PAL mail.

A. Securities, currency, or precious metals, including in their raw, unmanufactured state, are prohibited. Official Mail shipments are exempt from this restriction.

A1. Reserved for future use.

A2. Reserved for future use.

B. Regardless of mail class, a customs declaration (PS Form 2976, PS Form 2976-A, or PS Form 2976-B) is required for all items weighing 16 ounces or more or any item (regardless of weight) containing potentially dutiable mail contents (e.g., merchandise or goods) addressed to or from an MPO or DPO ZIP Code. If mailed using Priority Mail Express service, mailpieces requiring a customs form that are addressed to or from an MPO or DPO location must bear a properly completed PS Form 2976-B. No customs form is required for items weighing less than 16 ounces when the contents are not potentially dutiable (e.g., nonnegotiable documents). The surface area of the address side of the mailpiece must be large enough to contain the applicable customs declaration. The following exceptions apply:

- Known mailers are exempt from providing customs documentation on non-dutiable letters or printed matter. (A known mailer is a business mailer who enters volume mailings through a business mail entry unit (BMEU) or other bulk mail acceptance location, pays postage through an advance deposit account, uses a permit imprint for postage payment, and submits a completed postage statement at the time of entry that certifies that the mailpieces contain no dangerous materials that are prohibited by postal regulations.)
- All federal, state, and local government agencies whose mailings are regarded as "Official Mail" are exempt from providing customs documentation on any item addressed to an MPO except for those MPOs to which restriction "B2" applies.
- If mailpiece is endorsed "Contents for Official Use — Exempt from Customs Requirements."

B2. All federal, state, and local government agencies must complete customs documentation when sending potentially dutiable mail addressed to or from this MPO or DPO.

C. Cigarettes and other tobacco products, including tobacco leaves, chewing and pipe tobacco, snuff, and cigars are prohibited, including those that are authorized in Publication 52 under PACT.

C1. Obscene and horror articles, images, prints, paintings, cards, films, videotapes, comic books, etc., are prohibited.

D. Coffee is prohibited.

E. Medicines (prescription, over-the-counter, vitamins, and supplements) are prohibited when mailed to individuals for human or animal use. This prohibition does not apply when medicines are sent as Official Mail only between specifically designated agencies such as pharmaceutical distributors, hospitals, clinics, and pharmacies.

E1. Mailers are responsible to ensure that all medicines and vaccines conform to host nation laws.

E2. Any matter depicting nude or seminude persons, pornographic, or sexual items are prohibited. Non-authorized political materials are prohibited. Religious materials contrary to the Islamic faith are prohibited in bulk quantities, but individual items for the personal use of the addressee are permissible.

E3. Radio transceivers, cordless/cellular telephones, global positioning systems, scanners, base stations, and handheld transmitters are prohibited.

F. Firearms of any type are prohibited, except firearms mailed to or by official U.S. government agencies. This restriction does not apply to firearms mailed from this MPO ZIP Code, provided ATF and USPS regulations are met. Antique firearms do not require an ATF form.

F1. Weapons of any type are prohibited.

F2. Mailing firearms to or from this MPO ZIP Code is restricted to one shotgun and one single shot .22 caliber rifle per individual.

F3. Replica weapons and inert explosive devices (such as grenades) and weapons parts are prohibited.

G. Parcels of any class are prohibited.

H. Meats, including preserved meats, bones, skin, hair, feathers, horns or hoofs of hoofed animals, and wool samples whether hermetically sealed or not, are prohibited.

H1. Pork or pork by-products are prohibited.

I. Reserved for future use.

I1. Reserved for future use.

I2. Reserved for future use.

I3. Mail of all classes must fit in a mail sack. Mail may not exceed the following dimensions:

- Maximum length 27 inches.
- Maximum width 14 inches.
- Maximum height 14 inches.

J. Standard Post and Parcel Select parcels may not exceed 108 inches in length and girth combined.

K. Reserved for future use.

L. All Official Mail is prohibited.

M. Fruits, vegetables, live animals, and live plants are prohibited.

N. Registered Mail service is prohibited.

O. Reserved for future use.

P. Official Mail only.

Q. Mail may not exceed 66 pounds, and size is limited to 42 inches maximum length and 72 inches maximum length and girth combined.

R. All alcoholic beverages, including those available under Publication 52, Part 421, are prohibited.

R1. Materials used in the production of alcoholic beverages (i.e., distilling material, hops, malts, yeast, etc.) are prohibited.

S. Synthetic cannabinoids used to stimulate the central nervous system commonly known as "synthetic marijuana," "K2," or "Spice" are prohibited.

T. Mailings of household shipments and case lots of food to or from an MPO require military transportation office approval prior to mailing. Mailings to or from a DPO require pre-approval from the Diplomatic Pouch and Mail Director.

U. Mail addressed to Retirees (Box R) is limited to 16 ounces and up to a 90-day supply of TRICARE medications. This restriction does not apply to mail endorsed "Free Matter for the Blind or Handicapped."

U1. Mail is limited to First-Class Mail items, including audio and video media, weighing 13 ounces or less. This limitation does not apply to Official Mail.

U2. Retirees (Box R) are not authorized mail service.

U3. Reserved for future use.

U4. Mail addressed to Box C is limited to 2 lbs.

V. PMEMS is not available.

V1. Electronic Delivery status information for Extra Services is not available on *USPS.com*. Manual record of delivery may be available upon request.

W. Hermetically sealed packages of meat products bearing USDA certification, such as dried beef, salami, and sausage, may be mailed. 200 grams of tobacco per parcel are permitted duty free.

X. Cremated remains are prohibited.

Y. Mail is limited to First-Class Mail and Priority Mail items only. This restriction also applies to Official Mail.

Z. No outside pieces (OSPs).

Z1. The following restriction is applicable only to International Service Centers (ISC)/Exchange Offices. An Anti-Pilferage Seal (Item No 0817E or 0818A) is required on all pouches and sacks.

— *International Network Operations,
Global Business, 2-16-17*

Thrift Savings Plan Fact Sheet

ANNUAL RETURNS	G Fund	F Fund	U.S. Aggregate Index	C Fund	S&P 500 Stock Index	S * Fund	Dow Jones U.S. Completion TSM Index	I * Fund	EAFE Stock Index
1995	7.03	18.31	18.47	37.41	37.58	—	33.48	—	11.27
1996	6.76	3.66	3.63	22.85	22.96	18.52	17.18	6.27	6.14
1997	6.77	9.60	9.65	33.17	33.36	26.61	25.69	1.46	1.55
1998	5.74	8.70	8.69	28.44	28.58	7.51	8.63	20.46	20.09
1999	5.99	-0.85	-0.82	20.95	21.04	32.70	35.49	26.81	26.72
2000	6.42	11.67	11.63	-9.14	-9.10	-8.76	-15.77	-14.11	-14.17
2001	5.39	8.61	8.44	-11.94	-11.89	-9.04*	-2.52*	-21.94*	-14.88*
2002	5.00	10.27	10.26	-22.05	-22.10	-18.14	-17.80	-15.98	-15.94
2003	4.11	4.11	4.10	28.54	28.69	42.92	43.84	37.94	38.59
2004	4.30	4.30	4.34	10.82	10.88	18.03	18.10	20.00	20.25
2005	4.49	2.40	2.43	4.96	4.91	10.45	10.03	13.63	13.54
2006	4.93	4.40	4.33	15.79	15.79	15.30	15.28	26.32	26.34
2007	4.87	7.09	6.97	5.54	5.49	5.49	5.39	11.43	11.17
2008	3.75	5.45	5.24	-36.99	-37.00	-38.32	-39.03	-42.43	-43.38
2009	2.97	5.99	5.93	26.68	26.46	34.85	37.43	30.04	31.78
2010	2.81	6.71	6.54	15.06	15.06	29.06	28.62	7.94	7.75
2011	2.45	7.89	7.84	2.11	2.11	-3.38	-3.76	-11.81	-12.14
2012	1.47	4.29	4.22	16.07	16.00	18.57	17.89	18.62	17.32
2013	1.89	-1.68	-2.02	32.45	32.39	38.35	38.05	22.13	22.78
2014	2.31	6.73	5.97	13.78	13.69	7.80	7.63	-5.27	-4.90
2015	2.04	0.91	0.55	1.46	1.38	-2.92	-3.42	-0.51	-0.81

*Rates of return for May (inception of S and I Funds) through December 2001.

MONTHLY RETURNS	G Fund	F Fund	U.S. Aggregate Index	C Fund	S&P 500 Stock Index	S * Fund	Dow Jones U.S. Completion TSM Index	I * Fund	EAFE Stock Index
2016									
Feb	0.15	0.68	0.71	-0.12	-0.13	0.50	0.45	-2.82	-1.83
March	0.15	0.93	0.92	6.79	6.78	8.24	8.18	6.59	6.51
April	0.14	0.41	0.38	0.39	0.39	1.73	1.68	1.89	2.90
May	0.15	0.08	0.03	1.80	1.80	1.81	1.78	0.27	-0.91
June	0.15	1.80	1.80	0.26	0.26	-0.13	-0.15	-3.33	-3.36
July	0.13	0.64	0.63	3.69	3.69	5.40	5.38	5.07	5.07
Aug	0.13	-0.11	-0.11	0.14	0.14	0.80	0.76	0.08	0.07
Sept	0.13	-0.04	-0.06	0.02	0.02	0.90	0.89	1.24	1.23
Oct	0.14	-0.74	-0.76	-1.82	-1.82	-3.86	-3.86	-2.03	-2.05
Nov	0.16	-2.35	-2.37	3.71	3.70	7.95	7.83	-1.99	-1.99
Dec	0.20	0.16	0.14	1.98	1.98	1.81	1.80	3.44	3.42
2017									
Jan	0.20	0.23	0.20	1.90	1.90	2.16	2.15	2.89	2.90
LAST 12 MONTHS	1.83	1.64	1.45	20.09	20.04	30.22	29.69	11.31	12.03

The G Fund is managed internally by the Federal Retirement Thrift Investment Board. Assets of the F, C, S, and I Funds are managed externally. The Board currently has contracts with BlackRock Institutional Trust Company, N.A., to manage the F, C, S, and I Fund assets. The F, C, S, and I Funds invest in commingled trust funds, in which the assets of tax-deferred employee benefit plans are combined and invested together. The F, C, S, and I Funds and the BlackRock funds are passively managed index funds. Future performance of the funds will vary and may be significantly different from the returns shown above. See the *Summary of the*

Thrift Savings Plan for detailed information about the funds and their investment risks. The monthly returns of the TSP Funds represent net earnings for the month after deduction of accrued administrative expenses and, except for the G Fund, after deduction of trading costs and accrued investment management fees as well. The returns for the four indexes shown do not include any of these deductions.

* Implemented May 2001.
See next page for L Funds.

L Funds

Annual Returns	L Income	L 2020	L 2030	L 2040	L 2050
2006	7.59	13.72	15.00	16.53	
2007	5.56	6.87	7.14	7.36	
2008	-5.09	-22.77	-27.50	-31.53	
2009	8.57	19.14	22.48	25.19	
2010	5.74	10.59	12.48	13.89	
2011	2.23	0.41	-0.31	-0.96	
2012	4.77	10.42	12.61	14.27	15.85
2013	6.97	16.03	20.16	23.23	26.20
2014	3.77	5.06	5.74	6.22	6.37
2015	1.85	1.35	1.04	0.73	0.45
Monthly Returns	L Income	L 2020	L 2030	L 2040	L 2050
2016					
Feb	0.01	-0.24	-0.41	-0.51	-0.63
Mar	1.53	3.35	4.54	5.25	5.94
Apr	0.34	0.58	0.75	0.85	0.95
May	0.38	0.69	0.91	1.03	1.15
June	0.11	-0.12	-0.31	-0.43	-0.58
July	1.00	2.01	2.85	3.31	3.74
Aug	0.13	0.16	0.18	0.20	0.21
Sept	0.20	0.30	0.38	0.43	0.48
Oct	-0.38	-0.91	-1.39	-1.66	-1.89
Nov	0.49	1.05	1.57	1.87	2.19
Dec	0.64	1.13	1.59	1.82	2.04
2017					
Jan	0.61	1.04	1.48	1.70	1.91
LAST 12 MONTHS	5.17	9.36	12.69	14.57	16.38

Freely Associated States (FAS) Restrictions

Effective March 19, 2015, the mailing restrictions for Freely Associated States will be listed in the Pull-Out section of the *Postal Bulletin* and updated periodically.

Freely Associated States

Mail addressed to freely associated states is subject to certain conditions or restrictions of mailing regarding content, preparation, and handling. The following FAS table outlines these conditions as listed by each affected FAS ZIP Code™ through the use of footnoted mailing restrictions codes (see the [Restrictions](#) following the table). For additional information on available extra services for FAS destinations, see *Mailing Standards of the United States Postal Service*, Domestic Mail Manual (DMM®), part 503.

Acceptance clerks must use the table with the POS ONE terminal to determine which FAS ZIP Codes are active and which conditions of mailing apply. Send inquiries to Randall Sobol at randall.f.sobol@usps.gov.

FAS Restrictions Table

FAS Table	See Restrictions
96939	A, B
96940	A, B
96941	A, B
96942	A, B
96943	A, B
96944	A, B
96960	A, B
96970	A, B
Marshall Islands	C
Federated States of Micronesia	C

RESTRICTIONS LEGEND

PS Form 2976, *Customs* — CN 22 (Old C 1) and *Sender's Declaration* (green label)

PS Form 2976-A, *Customs Declaration and Dispatch Note*

FAS = Freely Associated State

- A.** Bank currency (coin and paper) is prohibited.
- B.** Signature Confirmation, Signature Confirmation Restricted Delivery, Adult Signature Requested, Adult Signature Restricted Delivery, Certified Mail Adult Signature Required, and Certified Mail Adult Signature Restricted Delivery not available.
- C.** COD is prohibited.

— Asia-Pacific Relations,
Network Operations, 2-16-17

Stamp Announcement 17-17: Northern Cardinal Stamped Envelope



©2016 USPS

The *Songbirds in Snow* stamps were issued August 4, 2016, and from this stamp issue, the U.S. Postal Service® produced the *Northern Cardinal* stamped envelope with an issue date of November 3, 2016. The *Northern Cardinal* stamped envelopes (Item 882105) were issued as a set of 12 pressure-sensitive adhesive #10 regular security stamped envelopes with seals (Forever® First-Class Mail® priced at \$9.95 for each set).

For more information regarding the *Northern Cardinal* stamped envelopes, visit www.usps.com/shop.

Philatelic Products

There is one philatelic product for this issue:

- 882105, *Northern Cardinal* stamped envelope, packet of 12 with seals, (1 design), \$9.95.

Issue:	<i>Northern Cardinal</i> Stamped Envelope Set
Item Number:	882105
Denomination & Type of Issue:	Forever First-Class Stamped Envelope
Format:	#10 Regular Security Envelope, Packet of 12, 1 design
Issue Date	November 3, 2016
Art Director:	Derry Noyes, Washington, DC
Designer:	Derry Noyes, Washington, DC
Typographer:	Derry Noyes, Washington, DC
Artist:	Robert Giusti, Bridgewater, CT
Modeler:	Joseph Sheeran
Manufacturing Process:	Offset
Printer:	Ashton Potter (USA) Ltd. (APU)
Printed at:	Williamsville, NY
Press Type:	Halm Jet EM4000
Folding Machine:	W & D #527
Print Quantity:	240,000 envelopes
Paper Type:	61# Postal Envelope, Block, Type III
Adhesive Type:	Pressure-sensitive
Processed at:	Ashton Potter (USA) Ltd. (APU)
Envelope Orientation:	Horizontal
Envelope Size (w x h):	9.5 x 4.125 in/241.30 x 104.77 mm
Image Size (w x h):	1.60 x 1.174 in/40.64 x 29.82 mm
Colors:	Black, Cyan, Magenta, Yellow, PMS 339 U Green
Marginal Markings:	FOREST STEWARDSHIP COUNCIL Logo • "THIS ENVELOPE IS RECYCLABLE AND MADE WITH 30% POST CONSUMER CONTENT" • Recycling Logo • © USPS 2016

— Stamp Services, Marketing, 2-16-17

Prepaid Priority Mail Flat-Rate Stamped Envelope



On January 22, 2017, in Kansas City, MO, the Postal Service™ issued a new Priority Mail® Flat-Rate Envelope (Item 232700). The new product is an accountable item and features the \$6.65 *Lili'uokalani Gardens* stamp image printed directly on the envelope along with standard Priority Mail graphics.

The prepaid envelope seeks to enhance customer convenience and improve access to USPS® services by saving time and simplifying transactions. Art director Greg Breeding designed the stamp with original art by Dan Cosgrove.

The envelope is available through The Postal Store® website at www.usps.com/shop, by calling 800-782-6724, and in the quarterly *USA Philatelic* catalog. It is not available in Post Offices™ at this time.

Philatelic Products

There is one philatelic product for this stamp issue:

- 232716, Prepaid Priority Mail Flat-Rate Stamped Envelope First-Day Cover, \$7.09.

Issue:	<i>Lili'uokalani Gardens</i> Prepaid Priority Mail Flat-Rate Stamped Envelope
Item Number:	232700
Denomination & Type of Issue:	\$6.65 Prepaid Priority Mail Flat-Rate Envelope
Issue Date & City:	January 22, 2017, Kansas City, MO 64108
Art Director, Designer, Typographer	Greg Breeding, Charlottesville, VA
Artist	Dan Cosgrove, Chicago, IL
Manufacturing Process:	Flexography
Printer:	Bell, Inc.
Printed at:	Bell, Inc., Sioux Falls, SD
Press Type:	Stevens
Print Quantity:	648,000
Paper Type:	12-point, clay-coated newsback
Colors:	Yellow, Magenta, Cyan, Black, PMS 294 (Blue), PMS 485 (Red), Varnish
Stamp Orientation:	Horizontal
Image Area (w x h):	1.59375 x 1.25 in./40.48 x 31.75 mm
Overall Size (w x h):	9.5 x 12.5 in. (envelope)
Catalog Item Number(s):	<ul style="list-style-type: none"> ■ 232705, Regular Issue Envelope (5/pack), \$33.25. ■ 232710, Regular Issue Envelope (10/pack), \$66.50. ■ 232725, Regular Issue Envelope (25/pack), \$166.25. ■ 232716, First-Day Cover, \$7.09.

— Stamp Services, Marketing, 2-16-17

The Stamp Ceremony Memento

In 2017, the United States Postal Service® launched a new and exciting product for our customers and collectors — the stamp ceremony memento. This memento will be offered for a number of different products wrapped into one first-day-of-issue experience collectable. The stamp ceremony memento is professionally packaged to preserve the contents.



Love Skywriting stamp memento, Item 561634, \$18.95

The *Love Skywriting* stamp depicts the word “Love” written in white cursive script against a blue sky studded with wispy clouds. The edges of the letters are just beginning to blur into the surrounding sky. Underlining the word is a decorative swirl of smoke that emphasizes the message. A small, stylized plane, dwarfed by the giant letters, completes the end of the swirl, with smoke trailing from its tail.

The stamp ceremony memento for the *Love Skywriting* stamp includes:

First-Day Cover

Announce your affection with this new *Love Skywriting* first-day cover. The #6-¾ envelope bears one affixed Forever® stamp cancelled with an official first-day-of-issue postmark.

Digital Color Postmark

The *Love Skywriting* digital color postmark celebrates public displays of affection with handwriting floating between blue arcs representing clouds. Also included are an image of a plane and the stamp title, as well as the date and location of stamp issuance: January 7, 2016, Chino, CA 91710.

Ceremony Invitation

The stamp ceremony memento includes an original invitation to the official first-day-of-issue ceremony. This invi-

tation shows the order of the event and all of the participants.

Ceremony Program

The full-color program features the first-day-of-issue ceremony agenda and participants on one side, with a narrative about the stamp design on the reverse.

The stamp ceremony memento is also currently available for the *Lunar New Year: Year of the Rooster* stamp, the *Dorothy Height* stamp, the *Oscar de la Renta* stamp, and the *John Fitzgerald Kennedy* stamp. Each memento has an individual item number and is offered in the quarterly *USA Philatelic* catalog, online at www.usps.com/shop, or by calling 800-782-6724. Customers may request a free catalog by calling 800-782-6724 or writing to:

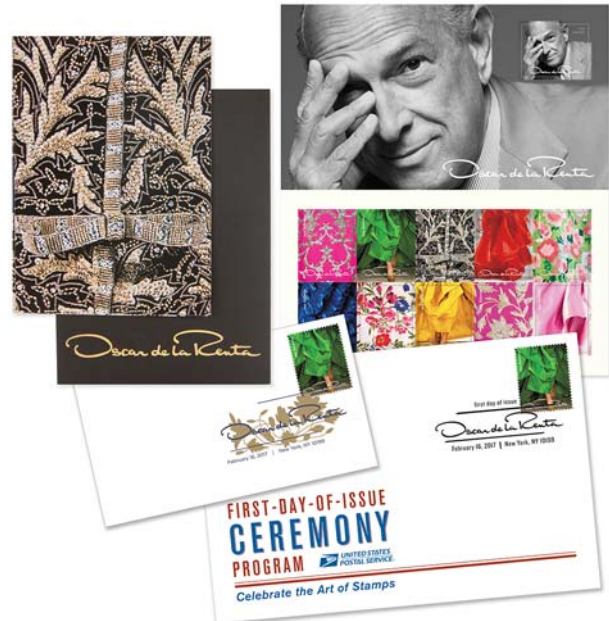
U.S. Postal Service
Catalog Request
PO Box 219014
Kansas City, MO 64121-9014



Lunar New Year: Year of the Rooster stamp memento, Item 552034, \$19.95



Dorothy Height stamp memento, Item 474334, \$21.95



Oscar de la Renta stamp memento, Item 562734, \$21.95

— Stamp Services, Marketing, 2-16-17



John Fitzgerald Kennedy stamp memento, Item 474634, \$18.95

Update: Stamp Announcement 17-09: Oscar de la Renta Stamp

In the article “Stamp Announcement 17-09: Oscar de la Renta Stamp,” in *Postal Bulletin* 22459, (1-19-17, pages 50-51), the USPS® copyright date in the technical details table was incorrectly shown as 2017.

The correct information is shown here:

Back:	©2016 USPS • USPS Logo • Barcode (562700) • Oscar de la Renta • Promotional Text
-------	--

— Stamp Services, Marketing, 2-16-17

Pictorial Postmarks Announcement

As a community service, the Postal Service™ offers pictorial postmarks to commemorate local events celebrated in communities throughout the nation. A list of events for which pictorial postmarks are authorized appears below. The sponsor of the pictorial postmark appears in italics under the date. Also provided are illustrations of these postmarks.

People attending these local events may obtain the postmark in person at the temporary Post Office™ station established there. Those who cannot attend the event but who wish to obtain the postmark may submit a mail order request. Pictorial postmarks are available only for the dates indicated, and *requests must be postmarked no later than 30 days following the requested pictorial postmark date.*

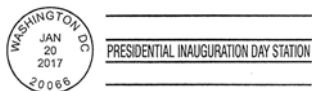
All requests must include a stamped envelope or postcard bearing at least the minimum First-Class Mail® postage. Items submitted for postmark may not include

postage issued after the date of the requested postmark. Such items will be returned unserved.

Customers wishing to obtain a postmark must affix stamps to any envelope or postcard of their choice, address the envelope or postcard to themselves or others, insert a card of postcard thickness in envelopes for sturdiness, and tuck in the flap. Place the envelope or postcard in a larger envelope and address it to: Pictorial Postmarks, followed by the Name of the Station, Address, City, State, ZIP+4® Code, as listed below.

Customers can also send stamped envelopes and postcards without addresses for postmark, as long as they supply a larger envelope with adequate postage and their return address. After applying the pictorial postmark, the Postal Service returns the items (with or without addresses) under addressed protective cover.

The following pictorial postmarks have been extended for 90 days:



January 20, 2017

United States Postal Service
Presidential Inauguration Day Station
Postmaster
2 Massachusetts NE
Washington, DC 20002-9998



January 27, 2017

Roger B. Chaffe Scholarship Fund
Cape Canaveral Station Apollo 1 50th Anniversary Memorial
Postmaster
8700 Astronaut Boulevard
Cape Canaveral, FL 32920-9998

The following pictorial postmarks have been extended for 30 days:



January 27, 2017

Southern Stamp Expo
America's Pastime Station
Manager
5600 Spalding Drive
Norcross, GA 30092-9998



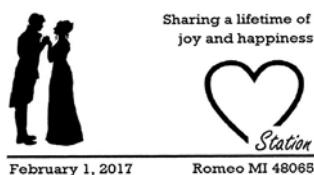
January 28, 2017

Southern Stamp Expo
Home Run Station
Manager
5600 Spalding Drive
Norcross, GA 30092-9998



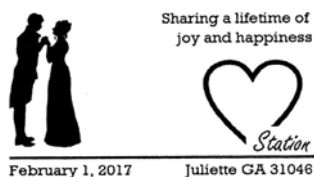
January 29, 2017

Southern Stamp Expo
Baseball Stadium Station
Manager
5600 Spalding Drive
Norcross, GA 30092-9998



February 1, 2017

United States Postal Service
Romeo and Juliette Heart Station
Postmaster
119 Church Street
Romeo, MI 48065-9998



February 1, 2017

United States Postal Service
Romeo and Juliette Heart Station
Postmaster
356 Bowdoin
Juliette, GA 31046-9998



February 1-14, 2017

United States Postal Service
Love Station
Postmaster
292 Highway 31
Romance, AR 72136-9998



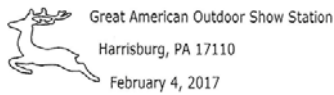
February 1-14, 2017

United States Postal Service
Valentine Station
Postmaster
446 East 29th Street
Loveland, CO 80538-9998



February 1–28, 2017

United States Postal Service
Valentine Station
Postmaster
7815 Beauty Road
Beauty, KY 41203-9998



February 4–12, 2017

United States Postal Service
Great American Outdoor Show Station
Uptown Station Manager
2347 North 7th Street
Harrisburg, PA 17110-9998



February 5, 2017

Boys Scouts of America
Barefoot Mailman Station
Postmaster
2200 Northwest 72 Avenue, #514
Miami, FL 33152-9998



February 7, 2017

Merrick Mint
America's Beautiful National Parks Station
Postmaster
PO Box 9998
Waukon, IA 52172-9998



February 7–21, 2017

Friends of Hartville
Valentine Station
Postmaster
PO Box 9998
Hartville, WY 82215-9998



February 11, 2017

Cowboy O'dham Tash Days
Casa Grande, AZ Station
Postmaster
1670 North Pinal Avenue
Casa Grande, AZ 85122-9998



February 14, 2017

United States Postal Service
Lovely Station
Postmaster
PO Box 9998
Lovely, KY 41231-9998

Love Skywriting Station



Modena NY 12548-9998

Love Skywriting Station



Fallsburg NY 12733-9998



February 14, 2017

United States Postal Service

Love Skywriting Station
Postmaster
2255 State Route
Modena, NY 12548-9998

February 14, 2017

United States Postal Service

Love Skywriting Station
Postmaster
5672 State Route 42
Fallsburg, NY 12733-9998

February 14, 2017

United States Postal Service

Devilish Valentine Station
Postmaster
1701 El Nido
Diablo, CA 94528-9800

February 14, 2017

Collin College

Collin College Station
Postmaster
1200 Jupiter Road
Plano, TX 75074-9998

February 21, 2017



Muktadhara Foundation

26 Years of Ekushey
February Station
Postmaster
7802 37th Avenue
Jackson Heights, NY
11372-9997

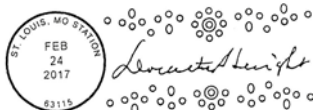


February 25, 2017

Lincoln Stamp Club

Linpex Station
Postmaster
PO Box 9998
Lincoln, NE 68501-9998

February 24, 2017



United States Postal Service

Saint Louis, MO Station
District Retail
1720 Market Street, Room
2033
Saint Louis, MO 63155-
9998



February 25-26, 2017

Stamp Collectors Club of Toledo

Toledo Stamp Expo Station
Postmaster
6923 Angola Road
Holland, OH 43528-9998



February 24-25, 2017

United States Postal Service

Texpex 2017 Station
Postmaster
1251 William D. Tate Avenue
Grapevine, TX 76051-9998



March 1-31, 2017

The Shrine of St. Patrick

The Shrine of Saint Patrick
Happy Saint Patrick's Day
Station
Postmaster
111 West Commercial
Kahoka, MO 63445-9998

How to Order the First-Day-of-Issue Digital Color or Traditional Postmarks

Customers have 60 days to obtain the first-day-of-issue postmarks by mail. Each cover must have sufficient postage to meet First-Class Mail® requirements. Customers may purchase new stamps at their local Post Office™, by telephone at 800-782-6724, or at The Postal Store® website at www.usps.com/shop.

Digital Color Postmarks

Only select stamp issues offer a digital color postmark. Customers may submit #6 or #10 envelopes constructed of paper rated as “laser safe.” The Postal Service recommends envelopes of 80-pound Accent Opaque, acid-free, 9/16 inches side seams with no glue on the flap. The maximum size of all digital color postmarks is 2 inches high x 4 inches long. Allow sufficient space on the envelope to accommodate the postmark. Do not use self-adhesive labels for addresses on the envelope. Two test envelopes must be included. There is a minimum of 10 envelopes at 50 cents per postmark required at the time of servicing. Customers must submit a check, money order, or credit card for payment.

The Postal Service reserves the right to not accept hand-painted and other cachet envelopes that are not compatible with our digital color postmark equipment. The Postal Service also reserves the right to substitute traditional black rubber postmarks if use of nonspecified envelopes results in poor image quality or damage to equipment.

Customers must affix the stamps to the envelopes and address them to themselves or others for return through

the mail. Or, they may include an additional self-addressed return envelope, large enough to accommodate their canceled items, with sufficient postage affixed for return of their postmarked items. Address customer requests for digital color postmarks to:

FDOI – (Name of Stamp Issue)
USPS Stamp Fulfillment Services
8300 NE Underground Drive, Suite 300
Kansas City, MO 64144-9900

After applying the first-day-of-issue postmark, the Postal Service will return the envelopes to the customer by U.S. Mail.

Traditional Postmarks

Customers must affix the stamps to the envelopes and address them to themselves or others for return through the mail. Or, they may include an additional self-addressed return envelope, large enough to accommodate their canceled items, with sufficient postage affixed for return of their postmarked items. Address customer requests for traditional postmarks to:

FDOI – (Name of Stamp Issue)
USPS Stamp Fulfillment Services
8300 NE Underground Drive, Suite 300
Kansas City, MO 64144-9900

After applying the first-day-of-issue postmark, the Postal Service™ will return the envelopes to the customer by U.S. Mail. There is no charge for the first 50 postmarks. There is a 5-cent charge for each additional postmark over 50. Customers must submit a check, money order, or credit card for payment.



Year of the Rooster Stamp

Stamp Fulfillment Services
Cancellation Services
8300 NE Underground Drive, Pillar 210
Kansas City, MO 64144-9998

March 5, 2017

Digital Color Pictorial



Love Skywriting Stamp

Stamp Fulfillment Services
Cancellation Services
8300 NE Underground Drive, Pillar 210
Kansas City, MO 64144-9998

March 7, 2017

Digital Color Pictorial

**FDOI – Gateway Arch Stamp**

USPS Stamp Fulfillment Services
8300 NE Underground Drive, Suite 300
Kansas City, MO 64144-9900

March 22, 2017

Digital Color Pictorial

**FDOI – Lili'uokalani Gardens Stamp**

USPS Stamp Fulfillment Services
8300 NE Underground Drive, Suite 300
Kansas City, MO 64144-9900

March 22, 2017

Digital Color Pictorial

**U.S. Flag Stamp**

Stamp Fulfillment Services
8300 NE Underground Drive, Suite 300
Kansas City, MO 64144-9900

March 27, 2017

Black and White Pictorial

**FDOI – Seashells**

Stamp Fulfillment Services
8300 NE Underground Drive, Suite 300
Kansas City, MO 64144-9900

March 28, 2017

Black and White Pictorial

**FDOI – Dorothy Height Stamp**

USPS Stamp Fulfillment Services
8300 NE Underground Drive, Suite 300
Kansas City, MO 64144-9900

April 1, 2017

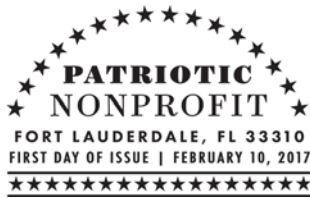
Digital Color Pictorial

**FDOI – Dorothy Height Stamp**

USPS Stamp Fulfillment Services
8300 NE Underground Drive, Suite 300
Kansas City, MO 64144-9900

April 1, 2017

Black and White Pictorial

**FDOI – Patriotic Nonprofit Stamp**

USPS Stamp Fulfillment Services
8300 NE Underground Drive, Suite 300
Kansas City, MO 64144-9900

April 10, 2017

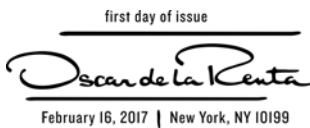
Black and White Pictorial

**FDOI – Oscar de la Renta Stamp**

USPS Stamp Fulfillment Services
8300 NE Underground Drive, Suite 300
Kansas City, MO 64144-9900

April 16, 2017

Digital Color Pictorial

**FDOI – Oscar de la Renta Stamp**

USPS Stamp Fulfillment Services
8300 NE Underground Drive, Suite 300
Kansas City, MO 64144-9900

April 16, 2017

Black and White Pictorial

**FDOI – Uncle Sam's Hat Stamp**

USPS Stamp Fulfillment Services
8300 NE Underground Drive, Suite 300
Kansas City, MO 64144-9900

April 18, 2017

Black and White Pictorial

**FDOI – John Fitzgerald Kennedy Stamp**

USPS Stamp Fulfillment Services
8300 NE Underground Drive, Suite 300
Kansas City, MO 64144-9900

April 20, 2017

Digital Color Pictorial

**FDOI – John Fitzgerald Kennedy Stamp**

USPS Stamp Fulfillment Services
8300 NE Underground Drive, Suite 300
Kansas City, MO 64144-9900

April 20, 2017

Black and White Pictorial

**FDOI – Grapes Stamp**

USPS Stamp Fulfillment Services
8300 NE Underground Drive, Suite 300
Kansas City, MO 64144-9900

April 24, 2017

Black and White Pictorial**FDOI – Nebraska Statehood Stamp**

USPS Stamp Fulfillment Services
8300 NE Underground Drive, Suite 300
Kansas City, MO 64144-9900

May 1, 2017

Digital Color Pictorial**FDOI – Barn Swallow Stamped Envelope**

USPS Stamp Fulfillment Services
8300 NE Underground Drive, Suite 300
Kansas City, MO 64144-9900

May 3, 2017

Black and White Pictorial**FDOI – Pears Stamp**

USPS Stamp Fulfillment Services
8300 NE Underground Drive, Suite 300
Kansas City, MO 64144-9900

May 23, 2017

Black and White Pictorial

Sustainability

Federal Reporting Requirements on Hazardous and Toxic Chemicals

Reminder

Postal Service™ policy requires all USPS® facilities to comply with reporting requirements of the Emergency Planning and Community Right-to-Know Act (EPCRA), if applicable. Postal sites that store certain quantities of hazardous and toxic chemicals must complete and submit the EPCRA Tier II Form by March 1 every year.

Reporting requirements apply to any location that stores threshold quantities of EPCRA-regulated hazardous and toxic chemicals. Regulated chemicals used by the Postal Service include sulfuric acid in lead-acid batteries, gasoline, diesel, heating oil, and ice melt/anti-skid products. These chemicals are discussed in greater detail below.

Applicability

Commonly reported chemicals and thresholds applicable to USPS facilities include:

- **Lead-acid batteries.** The 500 pound threshold for sulfuric acid can be met by having more than six (6) tow motor batteries or more than two (2) forklift batteries, or a combination of these batteries onsite. The percent weight of sulfuric acid in the battery can be estimated by multiplying the battery weight by 18 percent.
- **Gasoline, diesel, or heating fuel.** The 10,000 pound threshold is equivalent to 1,433 gallons of gasoline or 1,223 gallons of diesel/heating fuel.
- **Ice melt/anti-skid products.** Rock salt, calcium magnesium acetate, and sand have a 10,000 pound threshold. The threshold applies whether or not the materials are stored in one bulk location or dispersed on bags or pallets throughout the site.

Reporting Process

As applicable, USPS Installation Heads should submit the emergency and hazardous chemical inventory reporting form, known as the Tier II Form, by March 1, 2017, to the following organizations:

- The State Emergency Response Commission (SERC);

- The Local Emergency Planning Committee (LEPC); and
- The local Fire Department that would respond to an emergency at your facility.

States may require reporting through the submittal of the hard copy Tier II Form, electronic reporting through the EPA Tier2 Submit software program, or through their own state-specific software programs or websites. Each state's individual reporting requirements, procedures, and forms can be accessed at <http://www2.epa.gov/epcra-tier-i-and-tier-ii-reporting>.

For states that recommend the EPA Tier2 Submit 2016 software, postal facilities should be able to utilize eAccess to request download of the Tier2 Submit 2016 software for use in electronic reporting. If other state electronic reporting software or website applications are not accessible or authorized on your USPS ACE computer system, you should report via hard copy communications using the paper Tier II Form.

Note: USPS facilities are not required to pay any fees associated with reporting (including electronic reporting user and registration fees).

Additional detailed reporting instructions are available through the appropriate regional manager of Environmental Compliance and Sustainability and on the Sustainability website at <http://blue.usps.gov/sustainability/environmental/tier-ii-reporting.htm>.

If you have questions regarding your need to report under EPCRA, contact your designated manager, Regional Environmental Compliance. For the East region (Northeast, Eastern, Capital Metro Areas, and Headquarters-related facilities), contact Nicholas DeCarlo at nicholas.decarlo@usps.gov. For the West Region (Great Lakes, Western, Southern, and Pacific Areas), contact Judy Wingo-Stalinger at judy.wingo-stalinger@usps.gov.

— Environmental Compliance and Risk Management,
Office of Sustainability, 2-16-17



475 L'ENFANT PLAZA SW
WASHINGTON DC 20260-5540

First-Class Mail
Postage & Fees Paid
USPS
Permit No. G-10

USPS® Issues New Forever® Stamp in the *Celebrating Lunar New Year* Series: *Year of the Rooster*



On Sale Nationwide: January 5, 2017.