

postal|bulletin

PUBLISHED SINCE MARCH 4, 1880



Contents

COVER STORY

Cybersecurity Awareness Month 2020

Deputy CISO Protects the Network that Binds the Nation	3
Cybersecurity Operations is on the Frontlines of the Cyber World	3
Identity and Access Management Improves Resources for the Workforce, Partners, and Consumers	4
Cybersecurity Risk Management Identifies and Manages Enterprise Risk	5
Cybersecurity Engineering Secures the Network from Behind the Scenes	5

POLICIES, PROCEDURES, AND FORMS UPDATES

Handbooks

Handbook EL-307 Revision: Reasonable Accommodation, An Interactive Process	6
--	---

Publications

Publication 223 Revision: Directives and Forms Update.	7
Publication 431 Revision: Changes to Post Office Box Service and Caller Service Fee Groups	9

ORGANIZATION INFORMATION

Domestic Mail

Labeling List Changes	11
-----------------------------	----

Finance

Federal Income Tax Withholding	35
--------------------------------------	----

Human Resources

Penalty Overtime Exclusion	35
----------------------------------	----

Mailing and Shipping Services

Mail Alert	36
------------------	----

Safety and Health

USPS National Slip, Trip and Fall Prevention Week, October 17 – 23, 2020	36
--	----

Stamp Services

Pictorial Postmarks Announcement	37
How to Order the First-Day-of-Issue Digital Color or Traditional Postmarks	38

Sustainability

Reporting Releases of Hazardous and Regulated Substances to the Environment	43
---	----

PULL-OUT INFORMATION

Fraud

Invalid USPS Corporate Account Numbers	13
Missing, Lost, or Stolen U.S. Money Order Forms	15
Missing, Lost, or Stolen Canadian Money Order Forms	22
Verifying U.S. Postal Service Money Orders	24
Counterfeit Canadian Money Order Forms	24
Toll-Free Number Available to Verify Canadian Money Orders	24

Other Information

Overseas Military/Diplomatic Mail	26
Freely Associated States Restrictions	32

POSTAL BULLETIN 2020 SEMI-ANNUAL INDEX

2020 Semi-Annual Index	PB 22552 (8-13-20)
------------------------------	--------------------

Find the latest in mail and delivery information and services offered by U.S. Postal® in the *Postal Bulletin* at about.usps.com/postal-bulletin

Mail Moment®

Cover Story

Cybersecurity Awareness Month 2020

The United States Postal Service® maintains one of the world's largest information technology networks, which links nearly 1.2 million devices and 66,000 mail processing technology systems. Established in 2014, the Corporate Information Security Office (CISO) safeguards this network — the network that binds the nation together — with enterprise-wide cybersecurity technologies and solutions.

This October, during Cybersecurity Awareness Month 2020, CISO is pleased to highlight all five of its strategic portfolios:

- Deputy CISO.
- Cybersecurity Operations.
- Identity and Access Management.
- Cybersecurity Risk Management.
- Cybersecurity Engineering.

Each group works hard to protect our network in every way. For more information about cybersecurity, visit the CyberSafe at USPS® websites on *Blue* (blue.usps.gov/cyber) and *LiteBlue* (liteblue.usps.gov/cyber).

Deputy CISO Protects the Network that Binds the Nation

Led by Chris Nielsen, the Deputy CISO portfolio provides governance and oversight of the CISO organization, and leads key enterprise-wide cybersecurity initiatives (see blue.usps.gov/itweb/ciso/christopher-nielsen-bio.htm).

These initiatives include:

- Cybersecurity-related communications and strategic planning.
- Training and awareness projects (see blue.usps.gov/cyber/welcome.htm).
- Policy development and compliance (see blue.usps.gov/itweb/ciso/pqc/welcome.htm).
- Security architecture.

In short, the Deputy CISO portfolio's top priority is to develop and oversee the cybersecurity strategies, policies, and processes used to keep the USPS® network safe from ever-evolving threats.

You can help Deputy CISO protect USPS using the following tips:

- **Get trained.** Complete your assigned security training when it is available on HERO.
- **Become a CyberSafe Guardian.** You don't have to work for CISO to protect the USPS network. Sign up today to be a CyberSafe Guardian for your department (see blue.usps.gov/cyber/guardian/welcome.htm) and learn how to keep your peers cyber smart.
- **Beware of tricksters.** Whether by email, text message, or voicemail, cybercriminals are hoping to trick you into giving away sensitive information. Don't fall victim to a ransomware or phishing attack, which could turn your technology against you.

For more information about how Deputy CISO protects the network that binds the nation, visit our National Cybersecurity Awareness Month page at blue.usps.gov/cyber/awareness-fair.htm.

Cybersecurity Operations is on the Frontlines of the Cyber World

The United States Postal Service® is a global business that processes and delivers 48 percent of the world's mail. With such a large operation, USPS® mail delivery relies on a strong technology network to ensure uninterrupted performance.

Protecting this network is the job of the Cybersecurity Operations (CSOC) portfolio (see blue.usps.gov/itweb/ciso/csoc/welcome.htm), led by Lynne Mitchell, Cybersecurity Operations manager (see blue.usps.gov/itweb/ciso/lynne-mitchell-bio.htm).

Under Lynne, this portfolio protects the USPS technology environment by responding quickly to internal and external cyberthreats. Part of this protection comes from two cybersecurity operations centers, or CSOCs, which continuously monitor the USPS network for suspicious activity, and provide stakeholders with situational awareness of cyber events and escalation, as needed. This is the CSOC **Threat Detection** program, which receives and responds to alerts, calls, and emails from employees

The CSOC InTP ensures the protection of all USPS proprietary information, employee personal data, or other assets from being removed or shared outside of the organization where it could be used to inflict harm.

- **Incident response.** Even the best cyber defense needs a team to respond to cybersecurity events and incidents. The incident response team analyzes and responds to cybersecurity issues that could impact or impair our network, while managing our incident response protocols and communications in the event of an actual cyberattack.
- **Threat Intelligence Unit (TIU).** In addition to monitoring the network for known types of cyberthreats, the CSOC TIU collaborates with outside partners to ensure awareness of any threats, as well as forecasting, monitoring, detecting, and hunting for internal and external cyberthreats.

- **eDiscovery.** In an organization as large as the Postal Service™, the obligation to preserve and produce electronic documents in support of litigation and investigations, as well as regulatory and Freedom of Information Act requests, is a massive undertaking. The eDiscovery team lends its expertise to help USPS meet its obligations in a cost-effective, timely, and compliant manner.

- **CSOC Center of Excellence Evolution Team (CCEET).** CCEET provides crucial, sustained collaboration within CSOC, and with its stakeholders within CISO, CIO, USPS, and our external partners. Through this team's efforts, improvements are made in CSOC monitoring capabilities and resilience. While pursuing daily operational activities in the other CSOC areas, CCEET focuses on planning, reporting, resilience, and improvements to monitoring.

For more information about Cybersecurity Operations, visit blue.usps.gov/itweb/ciso/csoc/welcome.htm.

Identity and Access Management Improves Resources for the Workforce, Partners, and Consumers

Strengthen. Protect. Improve. These are just a few of the terms that could be used to describe the CISO Identity and Access Management (IAM) portfolio, formerly known as Digital Integration (see blue.usps.gov/itweb/ciso/identity-access-management/welcome.htm).

This portfolio, led by Heather Dyer (see blue.usps.gov/itweb/ciso/heather-dyer-bio.htm), serves as the identity, access, and authentication organization for USPS®. IAM seeks opportunities to streamline and improve access management processes for employees and identity verification for customers.

Impacting USPS internal lifecycle management products, IAM provides access to technology resources for the entire workforce through eAccess, while building its replacement — called ARIS, the technology access platform of the future. Additionally, IAM is strengthening the way workforce members access their tools, while protecting our most vital assets with the Privileged Access Management program.

IAM's Identity Verification Services (IVS) directly impact USPS online offerings. Through online proofing, IAM secures our customer's identity, and their actions, for USPS products like Informed Delivery®, Hold Mail, and Operation Santa™.

Finally, the IAM team develops secure, innovative identity services. Through the expansion of our partnership with the FBI fingerprinting program and In-Person Proofing opportunities with other government agencies, IAM generates new revenue for USPS. Current IVS innovations include strengthening our biometrics, and online and in-person proofing products.

Moving forward, IAM will continue to modernize existing legacy systems, strengthen identity access management solutions, and revolutionize our customer onboarding.

You can help IAM protect USPS using the following tips:

- **Keep it secure.** Do not share ACE ID login or password information. Do not connect to someone else's login ID, password, or any other personal identity credential.
- **Keep personal information professional and limited.** Since your personal data is extremely valuable to both cybercriminals and advertisers, think twice about with whom you share it.

For more information about Identity and Access Management, visit blue.usps.gov/itweb/ciso/identity-access-management/welcome.htm.

Cybersecurity Risk Management Identifies and Manages Enterprise Risk

The Enterprise Cybersecurity Risk Management portfolio is responsible for identifying, assessing, prioritizing, and managing cyber risk at the United States Postal Service®. This team prioritizes a cyber risk based on the impact it will have on Postal Service™ assets, as well as the likelihood the risk will become a problem. The risk team has a variety of information sources to perform their analysis, which includes:

- Assessment and authorization identified vulnerabilities.
- Vulnerabilities discovered through scanning.
- Risks and vulnerabilities found within USPS® suppliers through third-party risk management.
- Threats associated with nation-state actors and organized cybercrime.
- Exposure of vulnerabilities through threat detection and incident response.
- Ad hoc discovery of risks through stakeholder identification.

The team manages risk through a centralized tool. Within that tool, a risk is first identified and given a score. The score is on a scale that ranges from minor to catastrophic based on the potential impact to business operations. The team

then notifies all potentially impacted parties and puts together a detailed response plan. With approval from leadership, the team implements their plan and remediates the risk. Once the plan has been executed, the evaluation phase begins to ensure the risk has been completely eliminated.

Together, all the steps in the cyber risk management process protect the Postal Service network in an ever-evolving cybersecurity environment.

You can help Cybersecurity Risk Management protect USPS using the following tips:

- **Be cautious with unexpected emails and text messages.** Cybercriminals are good at creating convincing messages that appear to come from trustworthy organizations, such as banks, schools, or even the World Health Organization.
- **Browse the internet safely.** Cybercriminals can create malicious websites that appear authentic and offer information related to COVID-19, but they're intended to steal usernames, passwords, and other sensitive information.

For more information about Cybersecurity Risk Management, visit blue.usps.gov/itweb/ciso/risk-management/welcome.htm.

Cybersecurity Engineering Secures the Network from Behind the Scenes

The United States Postal Service® has acquired some of the most talented and skilled individuals in cybersecurity. The Postal Service™ relies on these experts every day to manage cybersecurity technology design, implementation, and execution across the enterprise.

Leading these behind-the-scenes cybersecurity professionals is the Cybersecurity Engineering Manager, Doug Glair (see blue.usps.gov/itweb/ciso/douglas-glair-bio.htm).

Doug and his team work closely with the Chief Information Officer and Chief Technology Officer organizations on cybersecurity process and technology implementations, which improve security through asset visibility and protection, boundary protections, and data security. The team also delivers security visibility and automation for the enterprise, which includes both on-prem and cloud services.

In addition, the Cybersecurity Engineering portfolio keeps the USPS network safe by providing three important services:

- **Asset visibility and protection.** Improves the identification, documentation, authorization, and management of network-connected assets throughout their lifecycle. This team also protects the “endpoints” of our network — laptops, desktops, mobile phones, tablets, servers, and virtual environments — with

appropriate host-based firewalls, anti-virus and malware, network segmentation, and other protection services.

- **Boundary and e-Mail protection.** Protects network boundaries with appropriate firewalls and intrusion detections and prevention capabilities. The team delivers .com protections and email protections, while running the Network Change Review Board. This team also manages the enterprise's digital certificates, which are electronic credentials used to establish proof of identity in an electronic transaction.
- **Data security, visibility, and automation.** Protects data against unauthorized access, copying, transferring, or manipulation from a computer in the network. This team monitors the operation of security controls, while providing a view into how our systems and networks are running. The team is focused on improvement through automation and machine learning.

For more information about Cybersecurity Engineering, visit blue.usps.gov/itweb/ciso/cybersecurity-engineering/welcome.htm.

— Corporate Information Security Office,
Chief Information Security Officer
and Digital Solutions, 10-8-20

Policies, Procedures, and Forms Updates

Handbooks

Handbook EL-307 Revision: Reasonable Accommodation, An Interactive Process

Effective August 2020, the Postal Service™ revised Handbook EL-307, *Reasonable Accommodation, an Interactive Process*, to ensure compliance with changes to Section 501 of the Rehabilitation Act of 1973, as amended. These revisions include reasonable accommodation procedures and accessibility to facilities and technology, as well as ensuring alignment of self-disclosure disability codes and descriptions with those of the Office of Personnel Management.

Additionally, these revisions include document templates that may be used by Reasonable Accommodation Committees.

The revised version of Handbook EL-307 is now available on the Postal Service PolicyNet website:

- Go to blue.usps.gov.
- In the left-hand column, click *Essential Links*, and then click *PolicyNet*.
- Go to the right-hand side under “Published Forms and Directives.”
- Click *Handbooks*.

The direct URL for the Postal Service PolicyNet website is blue.usps.gov/cpim.

— National EEO Compliance and Appeals,
Labor Relations, 10-8-20

Publications

Publication 223 Revision: Directives and Forms Update

Effective September 30, 2020, Publication 223, *Directives and Forms Catalog*, is revised to include current information for the items noted in this article. See Chapter 1 of Publication 223 for information on how to order directives and forms.

Publication 223 is available online at about.usps.com/publications/pub223.pdf.

New

- HBK PO-631, *Growth and Delivery Point Management Program*.
- MOP FI-06-03-2020, *Policy Memo — Statistical Programs Letter #4, Fiscal Year (FY) 2020: CCCS, RCCS, TRACS, IOCS, ODIS-RPW, SIRVO-IODIS, and SPM*.
- MOP HR-06-29-2020-1, *Equal Employment Opportunity Policy Statement*.
- MOP HR-06-29-2020-2, *Postal Service's Policy on Workplace Harassment*.
- MOP HR-06-29-2020-3, *United States Postal Service Statement on Diversity and Inclusion*.
- MOP SM-06-19-2020, *Interim Supplement Extension to Management Instruction SP S2-2015-1 Noncompetitive Purchases*.
- PUB 226, *Creating U.S. Postage Stamps*.
- PS 3337-C, *Postal Vehicle Request*.

Revised

- HBK EL-380, *Postal Career Executive Service*.
- HBK EL-801, *Supervisor's Safety Handbook*.
- HBK EL-803, *Maintenance Employee's Guide to Safety*.
- HBK EL-814, *Postal Employee's Guide to Safety*.
- HBK F-65, *Transportation Cost System*.
- HBK PO-632, *National Delivery Planning Standards: A Guide for Builders and Developers*.
- LAB 36, *Collection Box Removal — Airport*.
- MAN ASM, *Administrative Support Manual*.
- MAN DMM, *Mailing Standards of the United States Postal Service, Domestic Mail Manual*.
- MAN IMM, *Mailing Standards of the United States Postal Service, International Mail Manual*.
- MAN POM, *Postal Operations Manual*.
- MAN SPP, *Supplying Principles and Practices*.
- PUB 28, *Postal Addressing Standards*.
- PUB 52, *Hazardous, Restricted, and Perishable Mail*.
- PUB 223, *Directives and Forms Catalog*.
- PUB 225, *An Introduction to Stamp Collecting*.
- PUB 260-A, *U.S. Postal Inspection Service: Delivering a World of Career Opportunities*.
- PUB 280, *Identity Theft: Safeguard your personal information*.
- SGN 441, *International Shipping Menuboard (V2) (Large Sustaining)*.
- SGN 442, *U.S. Shipping Menuboard (V1) (Large Sustaining)*.
- SGN 443, *Extra Services (Large Sustaining)*.
- SGN 449, *International Shipping Menuboard (V2) (Small Hook and Cord)*.
- SGN 450, *U.S. Shipping Menuboard (V1) (Small Hook and Cord)*.
- SGN 451, *Extra Services (Small Hook and Cord)*.
- SGN 457, *International Shipping Menuboard (V2) (Small Sustaining)*.
- SGN 458, *U.S. Shipping Menuboard (V1) (Small Sustaining)*.
- SGN 459, *Extra Services (Small Sustaining)*.
- SGN 501, *International Shipping Menuboard (V2) (Large Backlit)*.
- SGN 502, *U.S. Shipping Menuboard (V1) (Large Backlit)*.
- SGN 503, *Extra Services (Large Backlit)*.
- SGN 507, *U.S. Shipping Menuboard (V1) (Half-Size Backlit)*.
- SGN 508, *International Shipping Menuboard (V2) (Half-Size Backlit)*.
- SGN 509, *Extra Services Menuboard (V3) (Half-Size Backlit)*.
- SGN 525, *Extra Services Writing Table Decal — NON-RSS*.
- SGN 525, *Extra Services Writing Table Decal — RSS*.
- SGN 531, *Large EPS Display Header (Flat Rate)*.
- SGN 532, *Large EPS Display Header (Variable Rate)*.
- SGN 534, *Large EPS Display Variable Rate Services Sign*.
- PS 2856, *Damage Report of Insured Article and Contents*.
- PS 3203-X, *Personalized Stamped Envelopes and Cards Order Form*.
- PS 3615, *Mailing Permit Application and Customer Profile*.
- PS 3666, *Certification of Postal Service Employment of Individuals With Severe Disabilities*.
- PS 5957, *Requirement-by-ApPLICANT Matrix*.
- PS 8184, *National and International Service Center (ISC) Zone Charts Matrix & Labeling Lists Product Order Form*.

Obsolete

PSIN	Ed. Date	Title	Replaced By
MOP HR-03-26-2020-1	3/20	<i>Equal Employment Opportunity Policy Statement</i>	MOP HR-06-29-2020-1
MOP HR-03-26-2020-2	3/20	<i>Postal Service's Policy on Workplace Harassment</i>	MOP HR-06-29-2020-2
SGN 465	4/08	<i>Bilingual – US & International Shipping Menuboard w/o GXG – Small Hook and Cord – No Pricing</i>	N/A
SGN 466	4/08	<i>Bilingual – US & International Shipping Menuboard w/GXG – Small Hook and Cord – No Pricing</i>	N/A
SGN 467	4/08	<i>Bilingual – Extra Services Menuboard – Small Hook and Cord – No Pricing</i>	N/A
SGN 468	4/08	<i>Bilingual – ReadyPost Menuboard – Small Hook and Cord – No Pricing</i>	N/A
SGN 469	4/08	<i>Bilingual – Stamps & Other Services Menuboard – w/Passport & Passport Photos – Small Hook and Cord – No Pricing</i>	N/A
SGN 471	4/08	<i>Bilingual – Stamps & Other Services Menuboard – w/o Passport, Passport Photos, or DineroSeguro – Small Hook and Cord – No Pricing</i>	N/A
SGN 473	4/08	<i>Bilingual – US & International Shipping Menuboard w/o GXG – Small Sustaining – No Pricing</i>	N/A
SGN 474	4/08	<i>Bilingual – US & International Shipping Menuboard w/GXG – Small Sustaining – No Pricing</i>	N/A
SGN 475	4/08	<i>Bilingual – Extra Services Menuboard – Small Sustaining – No Pricing</i>	N/A
SGN 476	4/08	<i>Bilingual – ReadyPost Menuboard – Small Sustaining – No Pricing</i>	N/A
SGN 477	4/08	<i>Bilingual – Stamps & Other Services Menuboard – w/Passport & Passport Photos – Small Sustaining – No Pricing</i>	N/A
SGN 479	4/08	<i>Bilingual – Stamps & Other Services Menuboard – w/o Passport, Passport Photos, or DineroSeguro – Small Sustaining – No Pricing</i>	N/A
SGN 512	4/08	<i>Bilingual – US & International Shipping Menuboard w/o GXG – Backlit – No Pricing</i>	N/A
SGN 513	4/08	<i>Bilingual – US & International Shipping Menuboard w/GXG – Backlit – No Pricing</i>	N/A
SGN 514	4/08	<i>Bilingual – Extra Services Menuboard – Backlit – No Pricing</i>	N/A
SGN 515	4/08	<i>Bilingual – ReadyPost Menuboard – Backlit – No Pricing</i>	N/A
SGN 516	4/08	<i>Bilingual – Stamps & Other Services Menuboard – w/Passport & Passport Photos – Backlit – No Pricing</i>	N/A
SGN 517	4/08	<i>Bilingual – Stamps & Other Services Menuboard – w/o Passport & Passport Photos – Backlit – No Pricing</i>	N/A
SGN 518	4/08	<i>Bilingual – US & International Shipping Menuboard w/o GXG – Large Sustaining – No Pricing</i>	N/A
SGN 519	4/08	<i>Bilingual – US & International Shipping Menuboard w/GXG – Large Sustaining – No Pricing</i>	N/A
SGN 520	4/08	<i>Bilingual – Extra Services Menuboard – Large Sustaining – No Pricing</i>	N/A
SGN 521	4/08	<i>Bilingual – ReadyPost Menuboard – Large Sustaining – No Pricing</i>	N/A
SGN 522	4/08	<i>Bilingual – Stamps & Other Services Menuboard – w/Passport & Passport Photos – Large Sustaining – No Pricing</i>	N/A
SGN 523	4/08	<i>Bilingual – Stamps & Other Services Menuboard – w/o Passport & Passport Photos – Large Sustaining – No Pricing</i>	N/A
SGN 527	4/08	<i>Bilingual – Writing Table Decal – Shape</i>	N/A
SGN 533	9/09	<i>Flat Rate Panel</i>	N/A
SGN 535	9/09	<i>Flat Rate Side Panel</i>	N/A
SGN 536	9/09	<i>Variable Rate Side Panel</i>	N/A
TAG 119	3/16	<i>Priority Mail Express International (PMEI) Presort Drop Shipment Duty and Tax Chargeback</i>	N/A
TAG 120	3/16	<i>Priority Mail International (PMI) Presort Drop Shipment Duty and Tax Chargeback</i>	N/A
TAG 121	3/16	<i>First-Class Package International Service (FCPIS) Presort Drop Shipment Duty and Tax Chargeback</i>	N/A
PS 3804	1/16	<i>Return Receipt for Merchandise</i>	N/A
PS 8179-C	8/12	<i>Individual Development Plan</i>	N/A

Publication 431 Revision: Changes to Post Office Box Service and Caller Service Fee Groups

Effective October 8, 2020, Publication 431, *Post Office Box Service and Caller Service Fee Groups*, is revised to include the following changes.

Publication 431, *Post Office Box Service and Caller Service Fee Groups*

* * * * *

[Revise the following entries:]

ZIP Code	Fee Group
04030	3

* * * * *

The online version of Publication 431 is dated July 2013. Publication 431 is currently available on the Postal Service™ PolicyNet website (blue.usps.gov/cpim):

- Go to blue.usps.gov.
- In the left-hand column, click *Essential Links*, and then click *PolicyNet*.
- Go to the right-hand side under “Published Forms and Directives.”
- Click *Publications*.

Offices with WebBATS Manager/Supervisor access can view current Publication 431 information by going to the WebBATS Edit Facility Information page, as follows:

1. Go to the WebBATS main menu, and select Utility> Facility>Edit Facility option.
2. View the Fee Group field on the Edit Facility Information page.

— Retail Operations,
Retail and Customer Service Operations, 10-8-20



47,000

Number of alternative fuel-capable
vehicles in the Postal Service fleet

Organization Information

Domestic Mail

Labeling List Changes

Effective November 1, 2020, the Postal Service™ will revise Labeling List(s) L001, L006, L007, L012, L606, and L607 to reflect changes in mail processing operations. Mailers are expected to label according to these revised lists for mailings inducted on or after the November 1, 2020, effective date through the December 31, 2020, expiration date.

Labeling Lists

* * * * *

L001 5-Digit Scheme – Periodicals, Standard Mail, and Package Services Flats and Irregular Parcels

* * * * *

Deleted

Column A Destination ZIP Codes	Column B Label Container To (Deleted From)
32237	JACKSONVILLE FL 32217

* * * * *

L006 5-Digit FSS Scheme – Periodicals, Standard Mail, and Package Services Flats in Bundles

* * * * *

Deleted

Column A Destination ZIP Codes	Column B Scheme Bundle/ Container Placard (Deleted From)	Column C Facility Container Placard (Deleted From)
23450	VIRGINIA BEACH VA 23452	FSS RICHMOND VA 230
23451	VIRGINIA BEACH VA 23451	FSS RICHMOND VA 230
23452	VIRGINIA BEACH VA 23452	FSS RICHMOND VA 230
23453	VIRGINIA BEACH VA 23453	FSS RICHMOND VA 230
23454	VIRGINIA BEACH VA 23454	FSS RICHMOND VA 230
23455	VIRGINIA BEACH VA 23455	FSS RICHMOND VA 230

Column A Destination ZIP Codes	Column B Scheme Bundle/ Container Placard (Deleted From)	Column C Facility Container Placard (Deleted From)
23456	VIRGINIA BEACH VA 23456	FSS RICHMOND VA 230
23462	VIRGINIA BEACH VA 23462	FSS RICHMOND VA 230
23464	VIRGINIA BEACH VA 23464	FSS RICHMOND VA 230
23466	VIRGINIA BEACH VA 23462	FSS RICHMOND VA 230
23467	VIRGINIA BEACH VA 23464	FSS RICHMOND VA 230
23471	VIRGINIA BEACH VA 23455	FSS RICHMOND VA 230
23507	NORFOLK VA 23507	FSS RICHMOND VA 230
23517	NORFOLK VA 23507	FSS RICHMOND VA 230

L007 5-Digit Scheme – Periodicals, Standard Mail, and Package Services Flats in Bundles

* * * * *

Deleted

Column A Destination ZIP Codes	Column B Label Container To (Deleted From)
14009	ARCADE NY 14009
14020	BATAVIA NY 14020
14034	GOWANDA NY 14070
14042	ARCADE NY 14009
14067	MIDDLEPORT NY 14105
14070	GOWANDA NY 14070
14105	MIDDLEPORT NY 14105
14125	BATAVIA NY 14020
14131	RANSOMVILLE NY 14131
14132	NIAGARA FALLS NY 14304

Column A Destination ZIP Codes	Column B Label Container To (Deleted From)
14172	RANSOMVILLE NY 14131
14304	NIAGARA FALLS NY 14304
14701	JAMESTOWN NY 14701
14706	OLEAN NY 14760
14710	LAKEWOOD NY 14750
14733	JAMESTOWN NY 14701
14750	LAKEWOOD NY 14750
14760	OLEAN NY 14760
14770	OLEAN NY 14760

* * * * *

L012 5-Digit ZIP Scheme Combination**Changes**

Column A Destination ZIP Codes	Column B Label Container To (Change From)	Column B Label Container To (Change To)
00728	PONCE PR 00730	GUANICA PR 00653
00730	PONCE PR 00730	GUANICA PR 00653
00731	PONCE PR 00730	GUANICA PR 00653
00732	PONCE PR 00730	PONCE PR 00716
00733	PONCE PR 00730	PONCE PR 00716
00956	BAYAMON PR 00956	SAN JUAN PR 00936
00957	BAYAMON PR 00956	SAN JUAN PR 00936
00958	BAYAMON PR 00956	SAN JUAN PR 00936
00959	BAYAMON PR 00959	HATO REY PR 00917
00960	BAYAMON PR 00959	HATO REY PR 00917
00961	BAYAMON PR 00959	HATO REY PR 00917
16319	CRANBERRY PA 16319	TITUSVILLE PA 16354
16323	CRANBERRY PA 16319	TITUSVILLE PA 16354
16342	CRANBERRY PA 16319	TITUSVILLE PA 16354
16346	CRANBERRY PA 16319	TITUSVILLE PA 16354
16351	CRANBERRY PA 16319	TITUSVILLE PA 16354
16353	CRANBERRY PA 16319	TITUSVILLE PA 16354
16354	CRANBERRY PA 16319	TITUSVILLE PA 16354
32038	OLUSTEE FL 32072	LULU FL 32061
32044	OLUSTEE FL 32072	LULU FL 32061
32054	OLUSTEE FL 32072	LULU FL 32061
32058	OLUSTEE FL 32072	LULU FL 32061
32061	OLUSTEE FL 32072	LULU FL 32061
32083	OLUSTEE FL 32072	LULU FL 32061
32087	OLUSTEE FL 32072	LULU FL 32061
32091	OLUSTEE FL 32072	LULU FL 32061
40310	BURGIN KY 40310	HARRODSBURG KY 40330
40311	BURGIN KY 40310	HARRODSBURG KY 40330
40312	CLAY CITY KY 40312	WINCHESTER KY 40391
40313	CLEARFIELD KY 40313	NICHOLASVILLE KY 40356
40322	CLAY CITY KY 40312	WINCHESTER KY 40391
40330	BURGIN KY 40310	HARRODSBURG KY 40330
40336	BURGIN KY 40310	HARRODSBURG KY 40330
40337	CLAY CITY KY 40312	WINCHESTER KY 40391
40340	CLEARFIELD KY 40313	NICHOLASVILLE KY 40356
40342	CLEARFIELD KY 40313	NICHOLASVILLE KY 40356
40348	BURGIN KY 40310	HARRODSBURG KY 40330
40351	CLEARFIELD KY 40313	NICHOLASVILLE KY 40356
40353	CLAY CITY KY 40312	WINCHESTER KY 40391
40355	BURGIN KY 40310	HARRODSBURG KY 40330
40356	CLEARFIELD KY 40313	NICHOLASVILLE KY 40356
40358	CLAY CITY KY 40312	WINCHESTER KY 40391

Column A Destination ZIP Codes	Column B Label Container To (Change From)	Column B Label Container To (Change To)
40359	BURGIN KY 40310	HARRODSBURG KY 40330
40360	CLAY CITY KY 40312	WINCHESTER KY 40391
40361	BURGIN KY 40310	HARRODSBURG KY 40330
40362	BURGIN KY 40310	HARRODSBURG KY 40330
40370	BURGIN KY 40310	HARRODSBURG KY 40330
40371	CLAY CITY KY 40312	WINCHESTER KY 40391
40372	CLEARFIELD KY 40313	NICHOLASVILLE KY 40356
40374	CLAY CITY KY 40312	WINCHESTER KY 40391
40380	CLAY CITY KY 40312	WINCHESTER KY 40391
40385	BURGIN KY 40310	HARRODSBURG KY 40330
40390	BURGIN KY 40310	HARRODSBURG KY 40330
40391	CLAY CITY KY 40312	WINCHESTER KY 40391
40392	CLAY CITY KY 40312	WINCHESTER KY 40391
40402	ANNVILLE KY 40402	RICHMOND KY 40475
40403	ANNVILLE KY 40402	RICHMOND KY 40475
40444	CLEARFIELD KY 40313	NICHOLASVILLE KY 40356
40445	BURGIN KY 40310	HARRODSBURG KY 40330
40447	ANNVILLE KY 40402	RICHMOND KY 40475
40456	BURGIN KY 40310	HARRODSBURG KY 40330
40461	ANNVILLE KY 40402	RICHMOND KY 40475
40472	BURGIN KY 40310	HARRODSBURG KY 40330
40475	ANNVILLE KY 40402	RICHMOND KY 40475
40476	ANNVILLE KY 40402	RICHMOND KY 40475
40481	ANNVILLE KY 40402	RICHMOND KY 40475
40486	ANNVILLE KY 40402	RICHMOND KY 40475
40601	DANVILLE KY 40422	FRANKFORT KY 40601
40602	DANVILLE KY 40422	FRANKFORT KY 40601
40603	FRANKFORT KY 40618	FRANKFORT KY 40601
40604	DANVILLE KY 40422	FRANKFORT KY 40601
40618	FRANKFORT KY 40618	FRANKFORT KY 40601
40619	FRANKFORT KY 40618	FRANKFORT KY 40601
40620	FRANKFORT KY 40618	FRANKFORT KY 40601
40621	FRANKFORT KY 40618	FRANKFORT KY 40601
40622	FRANKFORT KY 40618	FRANKFORT KY 40601
41301	GRAVEL SWITCH KY 40328	CAMPTON KY 41301
41311	GRAVEL SWITCH KY 40328	CAMPTON KY 41301
41314	GRAVEL SWITCH KY 40328	CAMPTON KY 41301
41332	GRAVEL SWITCH KY 40328	CAMPTON KY 41301

Pull-Out Information

Fraud

Invalid USPS Corporate Account Numbers

Provide this listing to Contract Postal Units and acceptance clerks in non-POS locations without intranet access to validate a USPS Corporate Account (USPSCA) number online. For all other locations, online USPSCA validation is preferred. This list supersedes all previous notices, which you must recycle.

Acceptance clerks must not accept Priority Mail Express® shipments bearing an invalid USPSCA number in the "Payment by Account" or "Agreement Number" section of the label or form.

Note: The first 6 digits of a 9-digit Custom Designed Service and Next Day Pickup Agreement make up the Corporate Account Number.

005084	090155	198032	200712	207448	208168	208911	312313	317333	331006	332268	358355	530002
008149	090736	200014	200730	207461	208170	208935	312338	317337	331008	332273	358535	530030
009296	091063	200021	200766	207464	208182	208951	312342	317338	331022	332733	361020	530044
009413	092930	200029	200770	207480	208183	208953	312353	317343	331030	332801	361082	531113
013165	093120	200052	200794	207490	208184	208967	312382	319101	331034	333092	361171	531135
015324	094856	200061	200801	207492	208189	208982	312397	319111	331042	333100	361257	531397
018017	094890	200067	200806	207507	208216	208987	312398	319117	331043	333165	361285	531629
021758	095531	200072	200822	207514	208230	208990	312426	319130	331047	333233	361344	531701
022088	096001	200082	200839	207516	208253	209040	312434	319140	331079	333306	361363	531872
022485	096222	200096	200843	207540	208270	209067	312483	320948	331119	333308	362056	531877
023012	096460	200120	200897	207577	208297	209105	312495	322022	331127	333347	363001	531890
023583	098293	200159	200928	207599	208353	209122	312518	322060	331172	333390	363007	531896
030070	100026	200162	200938	207600	208400	209145	312535	322663	331206	333408	363014	532006
040002	100319	200184	200976	207647	208452	209153	314127	323140	331227	333437	363110	532914
041345	100460	200206	200985	207653	208457	209165	314132	323165	331230	333438	364016	551167
043308	100583	200242	200989	207690	208465	209216	314174	323645	331234	333444	365010	553116
044044	100912	200244	206034	207706	208476	209236	314235	324066	331236	333491	365011	553454
044076	100914	200280	206062	207731	208501	209240	314237	325362	331246	333528	365081	581103
048015	100929	200304	206065	207734	208503	209262	314263	326172	331299	333550	366022	600040
049042	100996	200360	206071	207736	208506	209269	314309	326768	331306	333683	366025	600054
060224	102422	200361	206077	207741	208523	209289	314323	330001	331404	333701	366027	600071
064547	108775	200365	206099	207793	208525	209305	314325	330003	331406	333858	366072	600090
070067	115175	200368	206139	207833	208528	209503	314346	330040	331426	334029	368001	600115
070069	115366	200369	206532	207864	208531	209724	314357	330057	331436	335397	386072	600600
070318	115460	200370	206760	207871	208534	209807	314454	330077	331444	335675	386921	601038
071011	115953	200378	206952	207887	208554	220007	314613	330163	331447	344050	387029	601088
071680	117003	200379	207050	207908	208578	221298	314728	330210	331460	344062	388082	601534
071990	117931	200393	207051	207920	208582	221520	314811	330211	331502	344161	388241	601705
075125	118068	200416	207064	207928	208590	232351	314818	330309	331512	344166	391001	601706
075164	122447	200421	207065	207940	208611	232353	314919	330336	331609	349029	391113	602248
075352	125018	200425	207079	207975	208689	232358	314943	330372	331615	349585	391168	602978
075656	129811	200441	207080	208002	208698	232359	314950	330402	331616	350070	392633	604346
076106	133030	200444	207083	208012	208738	232361	314966	330408	331619	352720	393139	604761
079350	148355	200470	207134	208121	208740	232370	314967	330410	331633	352838	393140	605022
080053	152224	200480	207140	208125	208782	232371	314970	330411	331815	352840	395200	605075
080285	152634	200510	207147	208126	208792	232416	315010	330500	331824	354004	395253	605628
080297	187032	200566	207226	208130	208793	299003	315025	330507	331825	354033	397050	605796
080512	192419	200582	207231	208132	208794	299015	315026	330551	331845	354059	402276	606028
080563	192420	200583	207234	208140	208820	301002	317152	330609	331847	354102	410145	606484
088098	192951	200585	207395	208141	208834	304003	317192	330730	331880	354105	453016	606684
088131	192994	200613	207400	208142	208853	309003	317236	330774	332020	357002	454390	606986
088242	196115	200615	207421	208143	208862	312201	317267	330805	332044	358036	489509	607009
088600	197001	200624	207424	208147	208864	312203	317298	330855	332087	358039	490600	607186
088705	197007	200666	207430	208148	208900	312219	317324	330958	332100	358065	493082	607763
089730	197039	200701	207446	208149	208905	312231	317330	330963	332177	358066	494282	607813

608025	648707	730372	731031	731463	737015	740543	741173	741843	749021	766511	802056	958821
608093	660677	730403	731034	731468	737024	740554	741195	741875	749122	770027	802368	967007
608100	662627	730421	731035	731658	737026	740588	741224	741926	749128	770154	802397	967238
608118	667029	730425	731037	731679	738026	740589	741244	741954	749139	770790	802493	967446
608185	701028	730449	731038	731688	738027	740590	741277	743010	749150	770892	814051	968198
611132	701053	730455	731041	731705	738028	740595	741278	743016	749174	782083	853983	968524
617203	711293	730462	731043	731752	740008	740627	741285	743017	750012	782373	900009	968779
618120	712198	730470	731044	731769	740018	740653	741325	743028	750013	786123	900092	968804
624420	723083	730498	731047	731792	740077	740694	741380	743048	750017	787026	900482	968995
626001	730027	730523	731259	731794	740102	740743	741382	743061	750025	787073	900536	970632
626139	730055	730591	731263	731808	740116	740798	741389	744084	750036	787097	903240	980897
629139	730069	730613	731295	731810	740125	740801	741393	744088	750050	787105	913049	980913
629146	730099	730639	731299	731855	740137	740823	741423	744100	750060	787108	915526	995027
631033	730101	730676	731309	731905	740175	740825	741425	744112	750101	787116	920053	995325
631114	730112	730685	731322	731917	740243	740828	741440	744124	750114	787134	921087	995332
631274	730113	730690	731335	731919	740271	740868	741464	744163	756002	787161	921122	995798
631511	730117	730766	731343	731945	740273	740873	741465	745004	760003	787180	921175	998160
631625	730118	730778	731346	731991	740300	740880	741522	745025	760006	787185	921238	
631936	730123	730781	731369	731992	740310	740945	741606	745036	760019	787186	927750	
633010	730133	730792	731412	734011	740318	740994	741622	746035	760040	787194	932543	
633011	730180	730808	731415	735003	740323	741001	741651	747002	760629	787195	932564	
641045	730199	730815	731418	735004	740406	741002	741658	747005	761004	787398	935245	
641158	730201	730869	731429	735033	740429	741005	741659	747012	761005	787532	941788	
641345	730248	730888	731430	735070	740433	741007	741663	747037	761006	787614	948874	
641348	730267	730902	731431	735081	740464	741008	741681	747041	761013	787839	950004	
641558	730280	730904	731435	735092	740498	741009	741690	748035	761798	791003	950905	
641826	730323	730944	731438	736014	740510	741023	741778	749003	762001	791010	951017	
641962	730331	731021	731453	737001	740536	741065	741809	749005	764005	800086	951991	

— Product Information Requirements, Mail Entry and Payment Technology, 10-8-20

Missing, Lost, or Stolen U.S. Money Order Forms

Do Not Cash — Upon Receipt, Notify Local Postal Inspectors

Provide this listing to all Postal Service™ employees responsible for accepting and cashing postal money orders. Destroy all interim notices when the numbers listed appear in the *Postal Bulletin*. The new money order serial

numbers consist of the first 9 digits. The tenth digit is a check digit only.

Do not cash outdated money orders **104 151 601 to 692 600 000**. Advise holders to send invalid money orders to Canada Post Corporation, Ottawa, Canada K1A 0B1. Check for altered dollar amounts by holding money orders to the light.

010 001 0200 to 0299	040 024 3901 to 3999	072 675 8287 to 8299	119 850 7400 to 7499
010 504 1932 to 1999	040 674 7100 to 7199	073 763 0867 to 0876	119 850 7700 to 7999
011 582 1889 to 1899	040 688 8816 to 8899	073 763 0878 to 0887	121 634 0460 to 0499
011 588 2900 to 3099	041 299 6752 to 6799	073 763 0889 to 0898	122 451 9879 to 9899
012 441 0784 to 0799	041 623 8889 to 8899	077 617 5481 to 5499	122 714 6805 to 6900
012 579 5675 to 5699	041 803 6565 to 6599	077 999 4001 to 4090	124 916 0304 to 0499
013 289 6176 to 6199	043 129 1968 to 1997	078 174 4475 to 4499	126 423 0136 to 0169
013 610 0014 to 0099	043 205 5922 to 5999	078 219 4931 to 4999	127 500 2328 to 2399
014 932 1000 to 1099	044 087 3457 to 3499	078 250 4756 to 4799	160 901 2254 to 2299
014 972 0800 to 0899	044 087 4000 to 4099	078 823 8312 to 8399	161 103 6581 to 6599
015 363 0065 to 0099	044 226 2487 to 2512	079 374 0300 to 2499	161 194 2857 to 0899
017 028 3200 to 3299	044 306 4200 to 4299	079 807 2342 to 2399	162 032 4447 to 4499
018 569 5333 to 5399	044 306 4370 to 4599	082 721 0228 to 0254	163 257 1085 to 1099
018 986 5264 to 5299	045 524 4121 to 4298	083 140 5000 to 7499	164 359 2406 to 2499
019 518 2814 to 2899	046 800 9870 to 9899	083 784 8886 to 8899	166 101 1433 to 1499
020 698 5159 to 5199	047 352 4000 to 4099	083 913 6915 to 6999	167 555 5201 to 5212
020 844 7307 to 7399	048 383 7650 to 7659	084 478 3920 to 3999	167 555 5214 to 5299
020 972 8948 to 8999	048 396 3647 to 3699	086 000 8271 to 8299	169 618 6274 to 6299
022 021 9110 to 9181	051 142 0755 to 0799	086 798 3840 to 3849	171 806 6878 to 6893
022 037 1411 to 1499	051 774 8857 to 8899	088 404 4472 to 4499	173 639 4685 to 4699
022 527 9201 to 9210	051 781 2875 to 2885	088 404 5584 to 5699	174 238 2779 to 2799
022 529 1882 to 1899	051 977 7010 to 7023	088 757 8688 to 8699	174 281 9347 to 9399
023 637 7169 to 7199	052 058 7115 to 7199	088 757 9400 to 9499	175 251 2600 to 0699
024 380 4100 to 4199	054 450 1130 to 1167	089 358 2248 to 2257	176 281 7937 to 7950
024 496 6870 to 6896	057 670 0563 to 0599	090 663 9678 to 9684	176 281 7963 to 7999
025 092 0987 to 0999	058 187 3836 to 3899	091 818 0071 to 0099	176 731 6586 to 6599
025 369 5535 to 5599	058 523 3003 to 3099	093 106 9346 to 9355	178 254 5000 to 9999
025 729 1151 to 1199	058 591 1153 to 1299	093 203 0500 to 0599	178 881 9900 to 9999
025 729 1643 to 1799	058 895 3746 to 3799	093 684 3630 to 3699	180 031 2089 to 2098
026 492 3180 to 3199	059 986 0814 to 0899	094 081 5074 to 5099	180 403 7723 to 7741
027 361 0430 to 0499	060 406 7650 to 7699	094 216 2555 to 2599	180 428 4580 to 0599
027 369 4482 to 4495	063 491 8122 to 8199	094 580 7062 to 7099	182 368 7544 to 0599
027 671 8762 to 8776	063 916 9968 to 9999	094 639 4200 to 4299	182 475 3229 to 3258
027 787 9886 to 9899	064 091 4500 to 4599	095 070 7186 to 7199	182 475 3904 to 3933
027 965 9487 to 9499	065 170 0471 to 0499	095 076 8300 to 8399	182 631 0031 to 0099
028 100 8069 to 8099	065 255 7909 to 7999	095 354 6864 to 6899	182 911 6539 to 6600
028 191 1852 to 1999	065 392 6345 to 6399	097 224 1350 to 1599	184 218 2760 to 2799
028 850 3000 to 3199	066 099 2014 to 2099	100 160 3800 to 3899	185 828 1474 to 1499
029 510 1500 to 1599	066 648 2880 to 2899	104 667 6400 to 6499	186 132 7583 to 0599
030 687 0903 to 0999	066 787 3639 to 3699	104 876 8937 to 8999	186 629 0589 to 0599
030 701 3442 to 3499	066 845 7500 to 9999	112 049 4413 to 4499	187 184 6177 to 0199
031 077 4507 to 4799	067 093 3869 to 3899	112 870 9765 to 9799	187 323 8200 to 8299
032 295 7500 to 9999	068 895 0334 to 0399	113 319 2000 to 2099	187 441 6080 to 6099
034 394 1000 to 1099	070 724 4488 to 4499	114 402 3850 to 3899	188 831 6774 to 6799
034 943 0400 to 0799	070 841 9181 to 9199	114 866 5368 to 5397	188 835 6370 to 6399
035 035 4337 to 4399	070 844 2546 to 2599	116 154 2800 to 2899	189 083 1064 to 1099
037 312 7500 to 7599	070 916 1340 to 1399	116 986 4400 to 4499	189 660 9583 to 9599
037 706 9578 to 9599	071 047 5768 to 5799	117 175 1647 to 5169	191 179 0377 to 0399
037 805 3677 to 3699	071 179 9800 to 9899	117 951 4687 to 4699	192 050 5762 to 5781
037 909 5490 to 5499	071 386 3682 to 3699	117 951 5200 to 5299	194 456 8600 to 0699
037 931 4660 to 4699	071 507 6840 to 6899	119 786 3051 to 3064	195 194 6881 to 6899
039 145 6521 to 6595	072 045 9641 to 9699	119 815 8961 to 6199	195 874 1112 to 1199

196 979 0524	to	0599	239 322 5200	to	5299	255 185 9527	to	9599	258 405 8900	to	8999
197 244 6100	to	6199	239 322 5400	to	5499	255 397 1557	to	1576	258 405 9600	to	9699
197 244 6300	to	6399	239 322 5600	to	5699	255 425 2989	to	2998	258 405 9700	to	9799
197 244 6400	to	6499	239 322 5800	to	5899	255 728 6412	to	6499	258 405 9800	to	9899
197 244 6500	to	6599	239 322 5900	to	5999	255 728 9842	to	9899	258 405 9900	to	9999
197 244 6600	to	6699	239 607 4783	to	4799	256 134 9833	to	9839	259 062 4788	to	4798
197 244 6700	to	6799	240 593 1879	to	1899	256 134 9840	to	9849	259 218 1400	to	1499
197 244 6800	to	8999	242 591 2048	to	2099	256 134 9850	to	9859	259 218 1500	to	1599
198 285 2556	to	2566	242 735 0388	to	0398	256 134 9860	to	9869	259 218 1600	to	1699
199 105 0778	to	0799	242 951 7276	to	7299	256 134 9870	to	9879	259 590 5654	to	5699
199 678 2968	to	2999	243 535 6370	to	6399	256 134 9880	to	9889	259 670 8268	to	8299
202 748 5133	to	5199	244 004 9985	to	9999	256 134 9890	to	9899	259 835 6238	to	6399
202 748 5245	to	5299	244 004 9985	to	9999	256 247 6900	to	6999	259 835 6701	to	6799
202 748 5300	to	5399	244 268 9765	to	9799	256 550 5536	to	5545	260 224 4600	to	4699
202 748 5400	to	5499	244 347 4471	to	4499	256 799 2257	to	2299	260 224 5941	to	5999
203 256 1240	to	1299	249 056 1551	to	1599	257 154 8763	to	8799	260 310 2821	to	2899
204 230 3577	to	3595	249 336 9438	to	9499	257 154 8800	to	8899	260 452 0010	to	0022
205 019 0174	to	0199	249 399 4000	to	4099	257 765 4567	to	4599	260 452 0049	to	4299
206 936 3184	to	3199	249 399 4100	to	4199	257 765 4610	to	4696	260 553 8200	to	8299
207 196 9900	to	9999	249 399 4200	to	4299	257 765 4737	to	4799	260 553 8600	to	8699
207 204 0700	to	0799	249 399 4300	to	4399	257 792 7800	to	7889	260 553 9600	to	9799
207 204 0800	to	0899	249 399 4400	to	4499	257 792 7900	to	7999	260 553 9800	to	9899
207 514 3857	to	3899	249 399 4500	to	4599	257 792 8000	to	8099	260 553 9900	to	9999
208 556 4707	to	4799	249 399 4600	to	4699	257 856 9863	to	9899	260 761 1603	to	1662
210 057 4038	to	4047	249 399 4700	to	4799	258 103 1773	to	1782	261 183 2100	to	2299
210 221 0548	to	0599	249 399 4800	to	4899	258 405 1800	to	1899	261 426 0408	to	0499
214 061 4711	to	4724	249 399 4900	to	4999	258 405 1900	to	1999	262 082 8000	to	8099
214 303 6311	to	6325	250 159 7502	to	7599	258 405 3300	to	3399	262 082 8100	to	8199
214 303 6239	to	6258	250 566 9644	to	9699	258 405 3400	to	3499	262 082 8200	to	8299
214 877 4251	to	4273	250 661 8425	to	8499	258 405 3500	to	3599	262 082 8300	to	8399
215 252 3918	to	3992	251 335 5731	to	5799	258 405 3700	to	3799	262 082 8400	to	8499
217 585 1400	to	1499	251 379 2380	to	2399	258 405 3800	to	3899	262 288 7302	to	7399
218 698 2157	to	2199	252 005 7626	to	7699	258 405 3900	to	3999	262 288 7400	to	7499
218 746 0800	to	0899	252 421 8401	to	8499	258 405 4000	to	4099	262 288 9900	to	9999
219 095 0100	to	0399	252 464 2810	to	2899	258 405 4100	to	4199	262 337 2600	to	2699
219 389 1885	to	1899	252 612 3683	to	3699	258 405 4200	to	4299	262 337 2700	to	2700
219 568 7435	to	7456	252 469 2125	to	2199	258 405 4600	to	4699	262 337 2800	to	2800
219 568 7469	to	7487	252 833 3286	to	3297	258 405 5600	to	5699	262 337 2900	to	2900
221 316 5757	to	5799	253 470 3948	to	3999	258 405 5700	to	5799	262 337 3000	to	3099
223 476 3914	to	3999	253 565 7400	to	7499	258 405 5800	to	5899	262 337 3100	to	3199
223 565 4921	to	4957	254 252 2800	to	2899	258 405 5900	to	5999	262 337 3200	to	3299
223 565 4979	to	4999	254 252 2900	to	2999	258 405 6000	to	6099	262 337 3300	to	3399
224 636 4745	to	4765	254 252 3000	to	3099	258 405 6100	to	6199	262 337 3400	to	3499
224 636 4776	to	4799	254 252 3100	to	3199	258 405 6200	to	6299	262 337 3500	to	3599
224 636 4855	to	4885	254 252 3200	to	3299	258 405 6300	to	6399	262 337 3600	to	3699
224 636 4932	to	4948	254 252 3300	to	3399	258 405 6400	to	6499	262 337 3700	to	3799
224 636 4950	to	4962	254 252 3400	to	3499	258 405 6800	to	6899	262 337 3800	to	3899
224 636 4985	to	4999	254 252 3500	to	3599	258 405 6900	to	6999	262 337 3900	to	3999
224 730 2207	to	2299	254 252 3600	to	3699	258 405 7000	to	7099	262 337 4000	to	4099
225 970 0500	to	0599	254 252 3700	to	3799	258 405 7100	to	7199	262 337 4100	to	4199
225 970 0600	to	0699	254 252 3800	to	3899	258 405 7200	to	7299	262 337 4200	to	4299
225 970 0700	to	0799	254 252 3900	to	3999	258 405 7300	to	7399	262 337 4300	to	4399
227 033 8679	to	8699	254 252 4000	to	4099	258 405 7400	to	7499	262 337 4400	to	4499
227 275 9400	to	9999	254 252 4100	to	4199	258 405 7800	to	7899	262 337 4500	to	4599
228 463 2456	to	2499	254 252 4200	to	4299	258 405 7900	to	7999	262 337 4600	to	4699
228 510 4852	to	4899	254 252 4300	to	4399	258 405 8000	to	8099	262 337 4700	to	4799
229 462 8451	to	8475	254 252 4400	to	4499	258 405 8100	to	8199	262 337 4800	to	4899
229 668 5977	to	5999	254 252 4500	to	4599	258 405 8200	to	8299	262 337 4900	to	4999
229 923 9176	to	9199	254 252 4600	to	4699	258 405 8300	to	8399	262 337 5000	to	5099
229 924 6696	to	6699	254 252 4700	to	4799	258 405 8400	to	8499	262 337 5100	to	5199
230 051 9500	to	9999	254 252 4800	to	4899	258 405 8500	to	8599	262 337 5200	to	5299
236 366 2431	to	2499	254 252 4900	to	4999	258 405 8600	to	8699	262 337 5300	to	5399
236 607 6882	to	6899	254 565 7607	to	7700	258 405 8700	to	8799	262 337 5400	to	5499
236 660 5853	to	5872	254 907 1203	to	1299	258 405 8800	to	8899	262 337 5500	to	5599

262 337 5600 to 5699	263 254 2500 to 2500	389 887 9211 to 9230	408 698 7015 to 7099
262 337 5700 to 5799	263 340 0000 to 0099	389 887 9234 to 9299	409 072 3941 to 3999
262 337 5800 to 5899	263 340 0100 to 0199	390 001 3182 to 3199	410 491 2311 to 2399
262 337 5900 to 5999	263 340 0500 to 0599	390 001 3500 to 3699	410 694 8400 to 8599
262 337 6000 to 6099	263 340 0600 to 0699	390 545 5974 to 5999	410 775 1500 to 1599
262 337 6100 to 6199	263 340 2700 to 2799	391 104 6146 to 6199	410 795 7927 to 7999
262 337 6200 to 6299	263 340 2800 to 2899	391 574 1466 to 1499	410 867 0917 to 0966
262 337 6300 to 6399	263 340 3000 to 3099	391 783 3020 to 3599	410 867 0970 to 0999
262 337 6400 to 6499	264 341 2360 to 2399	391 792 6100 to 6199	411 868 1023 to 1199
262 337 6500 to 6599	264 380 4000 to 4099	392 668 2956 to 2999	411 922 2322 to 2399
262 337 6600 to 6699	264 380 4100 to 4199	392 854 8500 to 8899	412 193 0900 to 0999
262 337 6700 to 6799	264 860 7832 to 7868	393 584 7566 to 7699	412 395 8599 to 8699
262 337 6800 to 6899	265 127 3658 to 3699	393 650 0074 to 0099	412 485 6500 to 6599
262 337 6900 to 6999	265 380 7111 to 7137	393 838 8316 to 8499	412 485 6610 to 6699
262 337 7000 to 7099	265 444 4762 to 4799	393 893 6007 to 6099	412 885 5953 to 5999
262 337 7100 to 7199	265 548 7074 to 7099	394 126 6907 to 6999	414 193 3608 to 3674
262 337 7200 to 7299	266 106 0000 to 2499	394 189 0405 to 0599	414 193 3677 to 3699
262 337 7300 to 7399	266 129 5809 to 5899	394 822 3243 to 3278	414 411 7348 to 7399
262 337 7400 to 7499	266 749 7900 to 7999	394 990 1810 to 1899	414 640 0757 to 0799
262 337 7500 to 7599	266 868 0952 to 0999	395 343 3264 to 3299	414 965 1727 to 1799
262 337 7600 to 7699	266 868 1028 to 1099	395 373 3035 to 3099	417 302 8104 to 8199
262 337 7700 to 7799	266 868 1100 to 1199	395 396 9649 to 9799	417 387 6532 to 6599
262 337 7800 to 7899	266 868 1200 to 1299	395 970 3240 to 3299	417 496 6800 to 6999
262 337 7900 to 7999	267 296 1237 to 1299	397 622 4054 to 4099	417 871 9250 to 9299
262 337 8000 to 8099	267 324 8946 to 8998	397 819 8902 to 8999	417 930 9533 to 9599
262 337 8100 to 8199	268 072 1203 to 1299	398 149 7200 to 7699	418 164 6500 to 6799
262 337 8200 to 8299	273 775 7700 to 7899	399 070 0872 to 0899	418 423 9863 to 9899
262 337 8300 to 8399	302 000 0000 to 9999	399 156 7119 to 7199	418 633 5922 to 5999
262 337 8400 to 8499	349 746 2056 to 2099	399 203 5064 to 5099	418 719 8520 to 8599
262 337 8500 to 8599	350 518 7350 to 7374	399 296 9910 to 9999	418 744 2235 to 2299
262 337 8600 to 8699	360 011 1690 to 1699	399 396 8935 to 8999	418 962 2848 to 2899
262 337 8700 to 8799	360 168 6008 to 6099	399 792 7775 to 7799	419 543 0286 to 0299
262 337 8800 to 8899	360 173 8800 to 8899	399 792 8300 to 8399	419 730 0300 to 0399
262 337 8900 to 8999	360 324 2326 to 2399	400 427 1051 to 1999	420 277 0015 to 0049
262 337 9000 to 9099	362 861 3064 to 3099	401 045 1505 to 1549	420 599 0734 to 0798
262 337 9100 to 9199	373 006 2176 to 2199	401 045 1571 to 1599	420 661 4115 to 4199
262 337 9200 to 9299	374 768 2600 to 2699	401 294 2700 to 2799	420 758 9500 to 9699
262 337 9300 to 9399	375 169 4400 to 4599	401 310 9505 to 9599	420 969 3951 to 3971
262 337 9400 to 9499	375 829 3400 to 3499	401 382 5312 to 5399	420 969 3973 to 3999
262 337 9500 to 9599	375 851 9100 to 9199	402 578 7876 to 7899	421 116 3565 to 3599
262 337 9600 to 9699	376 196 0911 to 0999	403 125 6744 to 6799	421 130 9300 to 9399
262 337 9700 to 9799	378 085 3679 to 3699	403 260 7000 to 7499	421 313 4500 to 4999
262 337 9800 to 9899	378 351 1063 to 1099	403 280 6470 to 6499	421 364 5537 to 5599
262 337 9900 to 9999	379 843 5100 to 5199	403 685 8600 to 8699	421 656 2609 to 2699
262 472 3188 to 3199	380 093 9600 to 9699	404 003 0300 to 0399	421 988 9700 to 9799
262 472 3200 to 3299	380 165 1165 to 1199	404 041 8838 to 8899	422 172 4667 to 4699
262 546 3100 to 3199	381 325 4500 to 4599	404 071 4268 to 4299	422 484 4212 to 4299
262 546 3200 to 3299	381 604 2510 to 2699	404 347 5356 to 5399	422 556 1270 to 1299
262 546 3300 to 3399	381 645 9525 to 9599	404 347 5548 to 5599	422 587 7024 to 7099
262 546 3400 to 3499	383 314 3968 to 3999	404 726 4500 to 4599	422 819 7533 to 7599
262 546 3500 to 3599	383 892 1000 to 1344	404 961 5001 to 5199	422 842 5073 to 5087
262 546 3600 to 3699	383 892 1382 to 1399	405 325 0188 to 0198	422 907 7563 to 7599
262 546 3900 to 3999	384 925 3641 to 3654	406 009 4587 to 4599	424 500 6050 to 6099
262 546 4300 to 4399	385 568 2331 to 2399	406 260 6830 to 6899	424 641 8500 to 8599
262 546 4400 to 4499	385 599 7554 to 7575	406 459 6641 to 6999	424 871 6600 to 6699
262 546 4500 to 4599	385 774 2024 to 2099	406 733 3000 to 3999	425 298 2352 to 2399
262 546 4600 to 4699	386 624 1412 to 1599	407 545 1557 to 1599	425 418 4269 to 4299
262 546 4700 to 4799	386 883 8936 to 8999	407 594 0412 to 0599	425 418 4405 to 4499
262 546 4800 to 4899	387 314 5574 to 5599	407 692 9100 to 9299	426 547 4566 to 4599
262 546 4900 to 4999	387 837 6300 to 6399	407 959 2190 to 2199	427 412 6337 to 6499
262 546 7100 to 7199	388 828 0656 to 0699	408 265 2275 to 2288	427 481 0900 to 0999
262 546 7300 to 7399	389 696 2400 to 2799	408 499 7700 to 7799	428 027 2742 to 2752
262 546 7400 to 7499	389 846 3104 to 3135	408 499 7900 to 7999	429 474 4172 to 4199
262 567 1788 to 1799	389 846 3145 to 3195	408 682 8484 to 8599	429 889 2900 to 2999

430 150 4401 to 4599	454 922 4867 to 4895	472 987 0213 to 0241	489 311 1930 to 1999
430 172 9800 to 9899	455 221 1348 to 1499	472 987 0290 to 0299	489 318 6200 to 6300
430 177 1900 to 2099	455 364 2147 to 2199	473 151 2069 to 2199	489 384 0027 to 0099
430 444 9500 to 9699	455 399 5400 to 5499	473 666 9138 to 9199	489 427 0658 to 0899
430 664 4070 to 4099	455 476 0676 to 0699	473 952 3429 to 3499	489 997 5252 to 5299
432 168 8419 to 8499	455 543 0618 to 0699	474 108 5402 to 5499	490 669 5850 to 6099
432 708 6800 to 6999	456 410 9006 to 9099	474 356 5193 to 5299	490 717 7080 to 7099
432 744 1544 to 1599	456 470 4146 to 4299	474 949 3366 to 3399	490 721 6000 to 6099
432 995 9775 to 9799	456 619 4460 to 4499	475 134 9362 to 9399	490 793 1500 to 2099
433 003 5800 to 5899	457 333 2686 to 2699	475 167 9667 to 9699	490 886 8171 to 8199
433 757 3047 to 3099	457 729 1767 to 1777	475 319 3415 to 3499	490 977 9221 to 9240
433 765 4003 to 4099	457 937 8615 to 8699	475 319 3649 to 3799	491 258 8100 to 9099
434 482 7060 to 7199	458 028 9810 to 9899	475 340 6400 to 6599	491 567 1376 to 1399
434 513 2386 to 2399	458 057 2712 to 2999	475 424 8410 to 8499	492 254 4800 to 4899
434 968 3076 to 3092	458 069 9537 to 9599	475 629 9156 to 9199	492 283 5100 to 5199
435 303 1831 to 1842	458 069 9665 to 9699	475 850 6101 to 6199	492 610 6813 to 6899
435 303 1986 to 1999	458 337 5222 to 5299	475 875 2500 to 2599	493 394 5568 to 5599
435 666 6092 to 6399	458 354 7653 to 7999	476 169 8264 to 8299	493 470 2562 to 2599
436 082 6400 to 6899	458 671 8678 to 8699	476 189 3000 to 3499	493 473 7700 to 7799
436 160 6441 to 6499	458 671 8721 to 8798	476 331 2480 to 2499	493 716 2153 to 2199
437 316 7115 to 7199	458 847 5044 to 5999	477 289 8601 to 8699	494 206 2972 to 2999
437 427 0500 to 3499	459 274 7624 to 7699	477 681 5206 to 5299	494 217 3446 to 3999
439 179 2300 to 2399	459 365 5432 to 5499	478 010 4243 to 4268	494 224 0500 to 0599
439 310 0458 to 0499	459 378 5764 to 5799	478 010 4270 to 4291	495 145 0600 to 0699
440 698 1947 to 1999	459 472 4816 to 4999	478 450 5071 to 5099	496 209 7425 to 7499
440 858 6300 to 6399	460 349 6878 to 6899	478 469 7838 to 7858	496 213 8728 to 8799
440 858 6420 to 7299	460 550 1909 to 1999	478 469 7883 to 7899	496 474 5226 to 5248
441 199 1655 to 1699	460 997 5234 to 5299	479 280 9800 to 9899	497 053 8517 to 8699
443 127 3648 to 3699	461 973 6443 to 6499	479 365 9116 to 9176	497 854 8673 to 8699
443 127 4000 to 4099	462 152 0107 to 0299	479 412 9900 to 9999	498 449 8888 to 8899
443 673 7900 to 7999	462 274 1072 to 1099	479 667 6190 to 6199	498 929 8285 to 8499
443 800 9335 to 9399	462 277 8373 to 8399	479 748 9680 to 9699	498 936 5310 to 5399
444 382 8822 to 8899	462 554 6051 to 6099	479 860 7000 to 7199	499 016 5425 to 5499
444 390 1667 to 1699	463 011 5529 to 5540	480 526 2000 to 2099	499 440 8575 to 8899
444 457 3854 to 3899	463 176 4115 to 4199	480 640 6330 to 6399	499 731 6717 to 6799
450 048 4173 to 4199	463 176 4229 to 4299	480 658 0568 to 0599	500 064 1858 to 1869
450 048 4442 to 4699	463 185 2600 to 2799	480 689 5100 to 5199	500 070 5725 to 7799
450 560 5173 to 5199	463 227 7711 to 7799	481 072 9463 to 9499	501 058 0016 to 0026
450 620 3077 to 3099	463 414 4869 to 4899	481 673 0074 to 0095	501 331 0300 to 0399
450 620 3135 to 3199	463 808 3484 to 3499	482 527 1500 to 1599	501 460 0977 to 0999
450 780 2716 to 2799	463 945 7400 to 7899	482 541 5255 to 5299	502 227 7645 to 7699
450 801 2700 to 2799	464 629 9000 to 9399	482 729 6800 to 6899	502 424 0200 to 0499
451 109 2967 to 2984	464 711 4332 to 4399	483 363 7207 to 7299	502 424 0600 to 0699
451 115 4110 to 4125	465 692 3963 to 3999	483 402 2356 to 2399	502 496 6923 to 6999
451 115 4127 to 4199	465 698 8300 to 8599	483 486 5100 to 5199	503 003 2700 to 2899
451 746 0700 to 0799	465 743 7745 to 7799	483 632 1521 to 1599	503 194 5144 to 5153
452 265 0074 to 0099	466 798 6056 to 6067	483 632 2600 to 2799	503 790 9922 to 9948
452 265 0246 to 0299	467 147 4300 to 4399	483 849 1615 to 1699	504 045 4030 to 4099
452 265 0335 to 0999	468 079 5782 to 5799	484 174 4803 to 5299	504 166 0200 to 0599
452 509 1169 to 1199	469 067 2817 to 2899	484 323 8900 to 9199	504 240 1062 to 1399
452 855 6471 to 6499	469 127 8000 to 8199	484 680 5000 to 5038	504 805 3300 to 3499
452 890 4679 to 4799	469 213 0359 to 0399	484 680 5040 to 5074	505 096 0662 to 0699
452 900 8215 to 8238	469 213 0500 to 0599	484 680 5077 to 5099	505 893 7739 to 7799
453 117 9146 to 9199	469 561 8011 to 8099	485 029 4913 to 4999	505 893 7800 to 7999
453 334 3631 to 3699	469 658 1961 to 1999	486 176 0600 to 0699	506 124 0800 to 0999
453 603 7841 to 7891	469 666 9900 to 9999	486 559 7555 to 7599	506 165 7027 to 0099
453 650 1140 to 1199	469 678 1900 to 1999	486 696 3023 to 3199	506 502 5209 to 5299
453 741 1300 to 1399	469 781 4900 to 4999	488 173 7900 to 7999	506 756 1682 to 1699
454 013 2919 to 2999	469 947 6960 to 6999	488 206 4100 to 4199	506 756 1700 to 1799
454 186 2411 to 2499	470 755 5800 to 5818	488 226 0200 to 0299	506 756 1800 to 1899
454 268 4883 to 4899	471 918 0300 to 0999	488 709 3906 to 3999	506 836 5326 to 5399
454 302 5400 to 5499	471 985 2408 to 2419	488 855 8359 to 8399	508 488 6226 to 6299
454 490 8300 to 8399	472 191 6700 to 6799	489 181 8963 to 8999	508 789 8332 to 8399
454 547 7434 to 7499	472 270 2555 to 2599	489 223 2000 to 2099	508 789 8400 to 8499

509 909 0425	to	0435	611 879 6939	to	6999	634 886 3428	to	3499	649 647 0522	to	0599
510 150 2400	to	2499	612 291 8013	to	8099	635 559 3449	to	3499	649 647 5237	to	5399
510 381 3200	to	3299	612 751 5171	to	5199	636 289 6214	to	6299	649 647 9100	to	9299
510 587 9500	to	9599	612 751 5226	to	5299	636 634 8007	to	8042	649 666 7800	to	8299
510 587 9659	to	9699	612 751 6083	to	6099	637 150 1200	to	1299	650 114 7707	to	7719
510 269 9770	to	9999	612 751 6268	to	6299	637 562 5828	to	5899	650 130 3400	to	3599
511 021 5042	to	5099	612 751 6572	to	6599	638 042 1647	to	1699	650 213 0406	to	0499
511 021 5100	to	5199	612 774 2111	to	2199	638 049 4984	to	4999	650 555 1749	to	1799
511 468 1747	to	1799	612 774 2254	to	2299	638 318 1115	to	1199	650 564 1900	to	1999
511 844 0100	to	0199	612 774 2500	to	2599	638 318 1453	to	1499	650 627 4212	to	4299
511 844 0340	to	0399	614 469 0979	to	0999	638 885 0000	to	0299	650 736 2043	to	2099
512 805 3913	to	3919	614 474 3000	to	3099	638 903 4362	to	4373	650 739 1540	to	1699
513 046 0700	to	0726	614 521 3490	to	3499	639 415 1929	to	1999	651 741 4415	to	4499
513 149 0600	to	0699	614 645 1800	to	1899	639 415 2019	to	2099	651 882 2800	to	2899
513 445 3000	to	3199	614 832 1100	to	2099	639 420 6200	to	6299	652 754 6317	to	6399
513 466 2034	to	2044	615 017 7505	to	7599	639 469 3517	to	3799	653 131 4945	to	4999
513 539 9052	to	9099	617 711 6609	to	6699	639 605 2143	to	2199	653 426 3300	to	3399
513 539 9267	to	9299	617 760 5266	to	5299	639 657 8600	to	8799	653 455 4874	to	4899
513 539 9800	to	9899	617 813 3601	to	3699	640 289 7500	to	7599	654 238 0000	to	0399
513 539 9985	to	9999	618 840 9200	to	9299	640 289 7700	to	7999	654 404 3065	to	3092
513 606 5459	to	5490	619 551 7229	to	7299	641 170 4420	to	4499	654 962 2900	to	3199
513 812 1751	to	1799	619 859 3000	to	3099	641 318 3133	to	3199	655 103 5081	to	5199
514 103 3600	to	3699	620 073 9400	to	9499	641 378 6500	to	6999	655 523 2600	to	2999
514 103 3700	to	3799	621 614 7907	to	7930	641 383 8739	to	8799	656 305 2448	to	2499
514 103 3800	to	3899	621 614 7932	to	7999	641 877 3187	to	3299	657 347 4438	to	4999
600 645 3223	to	3299	621 648 8021	to	8199	641 877 3310	to	3399	657 710 8100	to	8999
601 339 1200	to	1399	621 648 8500	to	8599	642 355 8094	to	8199	657 780 0985	to	0999
601 653 5884	to	5899	621 904 8351	to	8599	642 355 8308	to	8999	658 586 1400	to	1499
601 661 7700	to	7799	621 916 1978	to	1989	642 900 0018	to	0099	658 877 8000	to	8199
601 682 5343	to	5399	622 989 8032	to	8099	643 030 6254	to	6299	658 880 8000	to	8199
601 928 1600	to	1699	623 076 9300	to	9399	644 066 0882	to	0899	659 398 7300	to	7399
602 512 2972	to	2999	623 819 5006	to	5099	644 069 0600	to	0699	659 706 8113	to	8199
602 555 2400	to	2799	623 895 8200	to	8399	644 077 7506	to	7699	659 846 7837	to	7899
602 829 7061	to	7099	623 917 0000	to	0099	644 085 8157	to	8199	660 510 4100	to	4199
603 483 9572	to	9599	623 917 0200	to	0299	644 112 9839	to	9899	660 673 0400	to	0599
603 490 7200	to	7299	624 468 5288	to	5299	644 373 9083	to	9099	661 488 5000	to	5099
603 678 7100	to	7199	624 665 3162	to	3198	644 380 1460	to	1499	661 609 9100	to	9199
603 678 7662	to	7699	625 088 6735	to	6799	644 733 4715	to	4799	661 716 9420	to	9499
603 678 7902	to	7999	625 916 9500	to	9799	644 900 9712	to	9799	661 906 6522	to	6599
603 678 8418	to	8499	625 968 8956	to	8999	644 901 0109	to	1299	662 021 8332	to	8399
603 678 8700	to	9999	627 005 3938	to	3999	644 901 1325	to	1399	662 068 0700	to	0899
604 086 0880	to	0899	627 384 3907	to	4099	644 923 6800	to	7799	662 553 0774	to	0799
604 349 1414	to	1499	627 496 7549	to	7599	644 932 4655	to	4699	663 078 7034	to	7099
604 503 7776	to	7799	627 708 3605	to	3699	645 318 7240	to	7499	663 763 5300	to	5399
605 520 9037	to	9099	627 776 2500	to	2599	645 333 1766	to	1799	663 883 7039	to	7499
605 685 4010	to	4099	628 226 3100	to	3199	645 790 8632	to	8699	663 938 9200	to	9299
605 988 6467	to	6499	628 814 4702	to	4799	645 821 0657	to	0699	664 253 8000	to	8499
607 689 7951	to	7960	628 851 9689	to	9699	645 930 7948	to	7999	664 656 3055	to	3099
607 728 1276	to	1299	629 510 7200	to	7299	645 975 0737	to	0762	665 174 6400	to	6499
608 727 7100	to	7199	629 964 4200	to	4294	646 242 6200	to	6299	665 274 8208	to	8299
608 727 7273	to	7599	630 389 3056	to	3071	646 270 7639	to	7799	665 669 5400	to	5499
608 813 9950	to	9999	630 463 0588	to	0599	646 798 4000	to	4999	666 132 8226	to	8299
609 067 5325	to	5399	631 459 9117	to	9199	647 048 7035	to	7099	666 696 2209	to	2299
609 067 5488	to	5499	631 762 9325	to	9399	647 049 2900	to	2999	666 696 2309	to	2399
609 067 5600	to	5699	632 217 4933	to	4999	647 398 8300	to	8399	667 032 9300	to	9399
609 289 6123	to	6199	632 500 0000	to	640 3999	647 398 8481	to	8499	667 729 5529	to	5599
609 438 4400	to	4499	633 110 4165	to	4199	647 437 3000	to	4999	668 383 8400	to	8699
609 493 1100	to	1199	633 110 4303	to	4499	647 811 2188	to	2199	670 368 3400	to	3499
609 766 8091	to	8999	633 438 6429	to	6599	648 009 6057	to	6099	670 369 7336	to	7399
609 825 4100	to	4115	633 588 7173	to	7182	648 163 5300	to	5499	670 750 7169	to	7199
609 884 2981	to	2999	634 725 0700	to	0799	648 722 5283	to	5299	671 046 6200	to	6399
609 893 1000	to	1099	634 803 3239	to	3299	648 892 3164	to	3199	671 251 5448	to	5499
610 092 3200	to	3299	634 807 2474	to	2499	649 100 3989	to	3999	671 926 5600	to	5799
610 582 4200	to	4299	634 827 5900	to	5999	649 647 0370	to	0399	672 444 2000	to	2999

672 828 3410	to	3499	695 947 8518	to	8599	740 514 0300	to	0499	835 539 5200	to	5999
673 167 5776	to	5799	696 662 8247	to	8299	740 523 7432	to	7449	835 813 3015	to	3099
675 464 3700	to	3799	697 447 8285	to	8296	740 535 1555	to	1580	837 672 8967	to	8999
675 464 4000	to	4199	698 042 4816	to	4899	740 557 3570	to	3579	837 784 3282	to	3299
676 365 5958	to	5999	698 131 2138	to	2157	740 650 4104	to	4140	838 176 8377	to	8399
676 669 1024	to	1099	698 227 0000	to	0099	740 684 0620	to	0800	838 518 1257	to	1299
677 126 6734	to	6799	700 065 2570	to	2599	740 701 6105	to	6114	839 718 8257	to	8299
677 333 9979	to	9999	700 065 4800	to	4899	740 705 9790	to	9799	840 323 0600	to	0699
677 466 1088	to	1099	700 190 3350	to	3359	740 726 6400	to	6500	840 875 6235	to	6299
678 071 4500	to	4799	700 228 6048	to	6099	740 748 8319	to	8329	840 910 0900	to	0999
678 096 7531	to	7599	700 650 0452	to	0499	740 765 3306	to	3399	841 349 5000	to	5099
679 909 2578	to	2599	700 666 1323	to	1349	740 774 8434	to	8499	841 805 7747	to	7899
680 112 9565	to	9599	700 786 9106	to	9142	740 779 4259	to	4299	841 805 7944	to	8099
680 244 0903	to	0999	700 859 0744	to	0758	740 786 1885	to	1899	842 226 0685	to	0695
680 412 6046	to	6099	701 028 6780	to	6899	740 790 5989	to	5999	842 685 4600	to	4699
680 761 6800	to	6899	701 213 3900	to	3999	740 803 4870	to	4879	842 685 4742	to	4999
681 677 0540	to	0699	701 267 2000	to	3999	740 820 4854	to	7836	842 860 0300	to	0399
682 070 1029	to	1099	701 335 7312	to	7399	740 827 7578	to	7594	842 898 5582	to	5599
682 956 6280	to	6299	701 369 2005	to	2050	740 917 7490	to	7499	843 062 7100	to	7199
682 956 6490	to	6599	701 499 2260	to	2299	740 918 5531	to	5549	843 077 6288	to	6299
682 956 6700	to	6799	701 503 2247	to	2299	741 037 8528	to	8551	843 077 6378	to	6399
682 965 1178	to	1199	701 541 2271	to	2299	742 030 6135	to	6149	843 758 5769	to	5778
682 965 1201	to	1299	701 553 6557	to	6599	742 033 2663	to	2674	843 786 2554	to	2699
683 118 2389	to	2399	701 578 7460	to	7469	742 040 3300	to	3309	845 656 8165	to	8199
683 378 2000	to	2099	701 578 7475	to	7499	742 112 8155	to	8199	845 727 2100	to	2199
683 378 2117	to	2299	701 601 3457	to	3499	742 151 5000	to	5014	845 746 2618	to	2635
683 415 1200	to	1499	701 605 5913	to	5999	742 191 4640	to	4649	846 390 7531	to	7599
683 444 8159	to	8199	701 695 3982	to	3999	742 192 5210	to	5224	846 918 0572	to	0599
685 154 7780	to	7789	701 695 4148	to	4199	742 222 9200	to	9210	847 237 7690	to	7699
685 297 7645	to	7699	701 695 4227	to	4299	742 228 9660	to	9669	847 284 2481	to	2499
685 623 5264	to	5299	701 708 1741	to	1799	742 247 6980	to	6989	847 374 7055	to	7065
685 650 9487	to	9499	701 736 3966	to	3999	742 290 0936	to	0950	847 374 7055	to	7065
685 669 4200	to	4299	701 772 0870	to	0899	742 302 7600	to	7699	847 636 5304	to	5399
685 757 8452	to	8499	701 838 2800	to	2899	742 305 3711	to	3799	847 700 5447	to	5499
686 071 2694	to	2799	701 941 0600	to	0699	742 305 3800	to	3899	847 723 7500	to	7599
686 176 3333	to	3354	702 171 1603	to	1699	742 305 3900	to	3999	849 485 3427	to	3499
686 372 3200	to	3299	702 195 5109	to	5199	742 305 4000	to	4099	849 520 9850	to	9899
686 644 5879	to	5899	702 254 9300	to	9399	742 305 4100	to	4199	849 608 1357	to	1399
686 899 1371	to	1399	702 264 7569	to	7599	805 885 8411	to	8499	849 792 2600	to	2699
686 931 7636	to	7699	702 519 0513	to	0524	806 087 1100	to	1499	850 546 1862	to	1899
687 601 0973	to	0999	702 713 1800	to	1809	806 268 9275	to	9299	851 143 6826	to	6844
687 614 6774	to	6799	702 821 5730	to	5799	806 534 3400	to	3477	851 209 9880	to	9899
688 120 9000	to	9999	702 821 5805	to	5899	807 342 3283	to	3399	851 928 9221	to	9299
688 314 3107	to	3191	702 844 6975	to	6994	808 086 7100	to	7199	852 589 6560	to	6599
690 291 1361	to	1371	702 846 6331	to	6399	808 090 3440	to	3499	853 049 3646	to	3699
690 788 2877	to	2899	702 848 3900	to	3999	808 325 5161	to	5699	854 304 4089	to	4999
690 893 5344	to	5399	702 857 7302	to	7499	808 784 8000	to	8299	854 529 2200	to	2299
690 893 5512	to	5599	702 878 0114	to	0199	830 125 0672	to	0699	854 532 0000	to	2999
690 904 1300	to	1599	703 364 1707	to	1799	830 602 5800	to	5999	855 001 6204	to	6249
690 941 6000	to	6199	740 002 7710	to	7719	830 610 3700	to	3799	855 319 9364	to	9399
691 313 6383	to	6399	740 037 6730	to	6800	830 983 3500	to	3599	855 361 3390	to	3399
691 313 6600	to	6699	740 119 2275	to	2284	830 983 3635	to	3699	856 226 0490	to	0499
691 582 8003	to	8099	740 130 6688	to	6698	831 354 1387	to	1399	856 656 5800	to	5999
691 664 1800	to	1999	740 144 2780	to	2795	831 815 8240	to	8299	856 752 0200	to	0299
691 664 2400	to	2499	740 241 9049	to	9099	832 525 3810	to	3899	857 111 1352	to	1399
692 727 9362	to	9399	740 252 9265	to	9294	833 159 1884	to	1899	857 279 3450	to	3499
692 798 1800	to	1899	740 255 1718	to	1799	833 456 2567	to	2599	857 843 4000	to	4099
693 249 0779	to	0799	740 274 2602	to	2619	833 566 3015	to	3071	858 124 7644	to	7699
693 249 0877	to	1699	740 277 0366	to	0392	834 130 5200	to	5299	858 756 3111	to	3299
693 445 0566	to	0999	740 332 7658	to	7671	834 316 5444	to	5499	859 063 8200	to	8699
693 448 8500	to	8999	740 348 6641	to	6658	834 354 8747	to	8766	859 190 0600	to	0644
693 645 9583	to	9599	740 351 4790	to	4799	834 354 8824	to	8838	859 437 5538	to	5599
693 965 4200	to	4299	740 374 7416	to	7499	835 269 5700	to	5799	859 811 2888	to	2899
695 741 2906	to	2999	740 470 2420	to	2443	835 496 7303	to	7399	859 855 8873	to	8999

860 240 8520 to 8599	900 936 0435 to 0499	911 509 9310 to 9399	922 280 2019 to 2099
860 275 3900 to 3999	901 058 5255 to 5280	911 523 3000 to 3999	922 280 2233 to 2299
860 518 9629 to 9699	901 273 1082 to 1099	912 057 9922 to 9999	922 773 0459 to 0499
860 600 0021 to 0999	901 287 5143 to 5199	912 882 0563 to 0899	923 032 7000 to 7399
861 158 2350 to 2599	901 291 2789 to 2799	913 605 2218 to 2299	923 045 3630 to 3699
861 367 5400 to 5499	901 525 7122 to 7199	913 709 2429 to 2499	923 484 3600 to 3699
861 637 6010 to 6099	902 089 1253 to 1299	913 818 3501 to 3999	923 493 9403 to 9599
861 979 7292 to 7499	902 198 9769 to 9799	914 063 4300 to 4399	923 493 9681 to 9699
862 216 6100 to 6199	902 948 1269 to 1299	914 346 7621 to 7644	923 604 4424 to 4499
862 263 9213 to 9299	902 985 0833 to 0899	914 453 1366 to 1399	923 810 7800 to 8299
862 271 0800 to 0999	903 370 6934 to 6999	914 529 6185 to 6299	924 252 1200 to 1299
862 271 5000 to 5099	904 600 6523 to 6599	914 896 4658 to 4699	924 252 1400 to 1499
863 871 5138 to 5199	904 892 0378 to 0399	915 187 8774 to 8779	924 533 0711 to 0799
863 949 5300 to 5399	904 892 0648 to 1299	915 300 2783 to 2799	924 533 2343 to 2399
864 088 8200 to 8299	905 056 2216 to 2299	915 546 6822 to 6999	924 533 2428 to 2499
864 426 3972 to 3999	905 510 6647 to 6799	915 685 5183 to 5199	924 685 1957 to 1999
864 520 6117 to 6136	905 510 6900 to 7099	915 671 3963 to 3980	924 946 6300 to 6699
865 151 0526 to 0599	905 794 0000 to 0199	915 671 3982 to 3999	925 333 5900 to 6099
865 500 4034 to 4099	905 794 0288 to 0299	915 675 2217 to 2299	925 336 2300 to 2399
865 883 6082 to 6099	905 873 6900 to 6999	916 440 3377 to 3399	926 432 5907 to 5999
866 004 3000 to 3999	905 873 7100 to 7299	916 670 6352 to 6399	926 436 3600 to 3699
866 442 4100 to 4899	905 880 8900 to 8999	916 682 5300 to 5399	927 765 6257 to 6299
867 366 9108 to 9118	905 889 7100 to 7199	916 694 1414 to 1499	928 197 8100 to 8199
867 633 7403 to 7499	906 158 1508 to 1599	916 703 0802 to 0821	928 197 8283 to 8299
867 737 5623 to 5699	906 558 8812 to 8899	917 089 0709 to 0799	928 856 2059 to 2068
868 169 4529 to 4599	906 982 2214 to 2299	917 089 0842 to 0899	930 078 5800 to 5899
868 173 8400 to 8599	907 725 8500 to 8599	917 216 2928 to 2999	930 219 1722 to 1799
868 514 9000 to 9099	907 815 0216 to 0257	917 370 6300 to 6499	930 335 7810 to 7819
868 566 9200 to 9299	908 622 4225 to 4235	917 486 4900 to 4999	931 097 9259 to 9299
869 200 0000 to 9999	908 936 9254 to 9299	918 460 0602 to 0699	931 156 1502 to 1579
869 387 1150 to 1199	909 066 4494 to 7499	918 951 7231 to 7299	931 156 1600 to 1625
869 505 3500 to 3599	909 067 7400 to 7499	919 519 2786 to 2799	931 156 1671 to 1699
869 523 7033 to 7099	909 100 1787 to 1799	919 536 0770 to 0799	932 506 6400 to 6599
869 566 6150 to 6167	909 100 1900 to 2099	919 814 3095 to 3199	932 732 1796 to 1799
869 800 0000 to 999 9999	909 355 0422 to 0499	919 889 5110 to 5134	932 827 9026 to 9099
870 054 4814 to 4899	909 568 8900 to 9099	919 889 5137 to 5176	932 957 2300 to 2399
870 491 4812 to 4849	909 568 9300 to 9499	919 889 5178 to 5199	933 060 6160 to 6189
870 536 5820 to 5829	909 725 7307 to 7399	919 889 5030 to 5070	933 387 2541 to 2561
870 541 7167 to 7239	909 833 0947 to 0999	919 889 5090 to 5099	933 760 3609 to 4199
870 575 8155 to 8999	910 219 8631 to 8699	919 915 2774 to 2787	933 894 0928 to 0999
870 589 0485 to 0494	910 265 1100 to 1199	920 155 4662 to 4687	934 018 2729 to 2741
870 691 7060 to 7099	910 471 7273 to 7299	920 309 9039 to 9199	934 180 0300 to 0399
872 028 4850 to 4899	910 536 2505 to 2599	920 771 5321 to 5399	934 236 3954 to 3999
872 029 9306 to 9399	910 958 7499 to 7599	920 857 5500 to 5899	934 622 8717 to 8999
872 078 3709 to 3799	911 140 1000 to 2199	920 864 3480 to 3499	935 216 0312 to 0399
872 100 0445 to 0459	911 245 2545 to 2599	920 963 4567 to 4599	935 843 2202 to 2247
900 556 4178 to 4199	911 268 9077 to 9099	921 333 7400 to 7499	936 024 8889 to 8899
900 845 0044 to 0099	911 400 8948 to 8999	921 477 3762 to 3799	936 339 4455 to 4499
900 936 0217 to 0299	911 508 1620 to 1799	922 278 1048 to 1399	

Missing, Lost, or Stolen Canadian Money Order Forms

Do Not Cash — Upon Receipt, Notify Local Postal Inspectors

Provide this listing to all Postal Service™ employees responsible for accepting and cashing postal money orders. Destroy all interim notices when the numbers listed appear in the *Postal Bulletin*. The new money order serial

numbers consist of the first 9 digits. The tenth digit is a check digit only.

Do not cash outdated money orders **104 151 601 to 692 600 000**. Advise holders to send invalid money orders to Canada Post Corporation, Ottawa, Canada K1A 0B1. Check for altered dollar amounts by holding money orders to the light.

719 869 731	to	9 760	728 702 338	to	2 400	734 950 111	to	0 170	742 325 668	to	5 700
720 227 871	to	7 930	728 915 371	to	5 850	735 120 331	to	0 840	742 408 771	to	8 830
720 227 949	to	7 960	728 953 141	to	3 410	735 283 008	to	3 020	742 512 120	to	2 150
720 368 543	to	8 570	728 954 280	to	4 310	735 293 131	to	3 220	742 684 849	to	4 890
720 392 151	to	2 570	729 169 081	to	9 140	735 635 010	to	5 040	742 839 553	to	9 630
720 556 491	to	6 640	729 363 841	to	3 870	735 783 961	to	3 990	742 913 668	to	3 700
720 558 621	to	8 650	729 682 891	to	3 190	735 803 401	to	3 430	742 917 287	to	7 296
720 575 361	to	5 570	729 838 940	to	9 070	736 005 420	to	5 440	742 921 891	to	1 980
720 590 152	to	0 179	729 839 101	to	9 130	736 366 021	to	6 110	742 983 631	to	3 810
721 638 331	to	9 170	730 077 683	to	7 840	736 624 456	to	4 500	743 020 021	to	0 170
721 815 391	to	5 420	730 109 847	to	9 880	736 670 851	to	1 060	743 206 491	to	6 500
721 969 713	to	9 740	730 373 761	to	3 850	736 767 061	to	7 090	743 235 992	to	6 050
722 072 137	to	2 160	730 501 951	to	2 130	736 767 093	to	7 120	743 940 631	to	0 900
722 378 265	to	8 280	730 519 379	to	9 470	736 982 191	to	2 370	743 978 011	to	8 070
722 413 990	to	4 004	730 569 278	to	9 360	736 982 551	to	2 730	744 234 751	to	4 780
722 764 948	to	4 980	730 711 711	to	1 740	737 110 141	to	0 170	744 499 591	to	9 680
722 825 840	to	5 889	730 722 991	to	3 230	737 185 501	to	5 710	744 626 901	to	6 910
723 153 841	to	3 850	730 845 970	to	5 990	737 317 321	to	7 350	745 388 794	to	8 910
723 237 616	to	7 630	730 888 291	to	8 320	737 517 781	to	7 840	746 446 806	to	6 820
723 331 081	to	1 110	730 927 591	to	7 680	737 628 181	to	8 210	746 818 351	to	8 410
723 496 443	to	6 470	731 307 914	to	7 930	737 634 258	to	4 270	747 245 266	to	5 280
723 967 291	to	7 320	731 402 431	to	2 460	738 361 971	to	1 980	747 364 813	to	4 830
724 655 196	to	5 340	731 407 232	to	7 320	738 447 601	to	7 660	747 501 434	to	1 450
724 711 441	to	1 500	731 588 301	to	8 340	738 648 355	to	8 450	747 739 891	to	0 070
724 711 538	to	1 560	731 767 273	to	7 320	738 849 811	to	9 900	748 148 649	to	8 760
724 793 221	to	3 250	731 781 061	to	1 120	738 892 270	to	2 290	748 259 960	to	9 970
724 908 109	to	8 120	731 837 821	to	7 910	738 997 259	to	7 380	748 565 162	to	5 280
724 937 461	to	7 670	731 841 377	to	1 450	739 161 451	to	1 540	748 874 988	to	5 030
725 163 118	to	3 151	732 018 481	to	8 600	739 219 381	to	9 440	749 137 381	to	7 410
725 202 735	to	2 750	732 067 972	to	8 370	739 740 151	to	0 180	749 190 192	to	0 210
725 398 591	to	8 800	732 188 649	to	8 670	739 793 491	to	3 520	749 685 421	to	5 450
725 464 591	to	4 920	732 193 460	to	3 470	739 793 527	to	3 550	749 846 791	to	6 850
725 475 321	to	5 330	732 201 241	to	1 390	739 942 621	to	2 650	749 993 131	to	3 580
725 711 057	to	1 070	732 220 431	to	0 440	739 999 231	to	9 320	750 071 587	to	1 610
725 738 581	to	8 730	732 355 201	to	5 380	740 011 517	to	1 530	750 408 167	to	8 183
725 981 311	to	1 430	732 472 320	to	2 560	740 030 701	to	0 970	750 438 421	to	8 501
725 987 835	to	7 880	732 541 605	to	1 620	740 261 740	to	1 820	750 743 911	to	4 030
726 060 811	to	0 900	732 572 221	to	2 490	740 265 811	to	6 290	750 779 118	to	9 400
726 391 970	to	2 520	732 586 479	to	6 710	740 299 111	to	9 170	750 910 981	to	1 010
726 484 771	to	4 800	732 994 037	to	4 080	740 299 231	to	9 260	750 960 841	to	0 900
726 493 351	to	5 300	733 163 449	to	3 460	740 329 266	to	9 320	751 296 211	to	6 240
726 504 031	to	4 063	733 297 171	to	7 290	740 889 081	to	9 090	751 539 121	to	9 180
726 504 070	to	4 090	733 446 631	to	7 110	741 010 421	to	0 530	751 541 311	to	1 790
726 504 331	to	4 390	733 474 665	to	4 770	741 113 041	to	3 370	751 757 641	to	7 700
726 563 701	to	4 060	733 704 482	to	4 570	741 373 891	to	4 340	751 936 951	to	7 010
726 599 371	to	9 460	733 751 041	to	1 130	741 452 369	to	2 490	751 951 861	to	1 890
726 626 356	to	6 370	734 009 101	to	9 130	741 492 991	to	3 140	751 999 021	to	9 110
727 182 271	to	2 510	734 290 759	to	0 770	741 553 460	to	3 470	752 139 516	to	9 570
727 416 181	to	6 240	734 389 273	to	9 290	741 764 431	to	4 520	752 182 892	to	2 950
727 481 431	to	1 460	734 440 031	to	0 111	741 764 431	to	4 520	752 206 861	to	7 100
727 749 241	to	9 780	734 797 201	to	7 320	742 178 834	to	8 880	752 295 241	to	5 600
728 382 331	to	2 480	734 939 611	to	9 640	742 325 500	to	5 520	752 731 351	to	1 410

752 767 441	to	7 470	762 593 431	to	3 460	773 208 991	to	9 290	800 427 530	to	7 540
753 008 941	to	9 030	763 155 160	to	5 180	773 231 311	to	1 340	800 872 741	to	2 830
753 194 311	to	4 370	763 178 631	to	8 660	773 348 739	to	8 940	801 349 801	to	9 830
753 620 378	to	0 400	763 506 001	to	6 060	773 348 739	to	8 940	801 676 681	to	7 100
754 013 917	to	3 940	763 522 141	to	2 470	773 575 891	to	5 950	802 967 821	to	7 940
754 161 061	to	1 120	763 717 694	to	7 800	773 852 971	to	3 030	803 217 601	to	7 780
754 358 445	to	8 610	763 826 461	to	6 520	775 373 449	to	3 460	803 729 731	to	9 850
754 410 451	to	0 660	763 900 460	to	0 471	789 257 191	to	7 250	803 747 402	to	7 520
754 438 393	to	8 410	763 900 479	to	0 530	790 448 020	to	8 460	804 138 181	to	8 420
754 493 109	to	3 130	763 917 271	to	7 750	790 597 485	to	7 530	804 428 224	to	8 250
754 664 182	to	4 220	764 125 801	to	5 860	790 911 883	to	1 900	804 682 411	to	2 710
754 816 377	to	6 470	764 284 525	to	4 560	791 057 441	to	7 550	805 272 525	to	2 540
755 487 421	to	7 600	764 526 241	to	6 330	791 239 081	to	9 290	805 523 445	to	3 460
755 592 901	to	3 140	764 601 421	to	1 600	791 374 483	to	4 500	805 745 704	to	5 730
755 790 020	to	0 030	764 650 231	to	0 470	791 387 971	to	8 030	806 452 907	to	2 980
755 791 730	to	1 800	764 984 371	to	4 850	791 447 521	to	7 850	806 744 781	to	4 850
755 926 951	to	7 070	765 003 667	to	3 680	791 451 151	to	1 240	806 982 181	to	2 300
755 934 332	to	4 510	765 042 517	to	2 540	791 500 009	to	0 470	807 764 791	to	4 910
755 957 701	to	8 000	765 194 728	to	4 970	791 771 431	to	1 490	808 089 931	to	9 960
755 962 981	to	3 280	765 387 365	to	7 450	792 004 293	to	4 320	808 656 423	to	6 450
756 035 371	to	5 490	765 541 801	to	2 100	792 018 379	to	8 420	808 753 771	to	3 800
756 301 257	to	1 290	765 638 461	to	8 970	792 070 621	to	0 740	809 189 001	to	9 010
756 371 565	to	1 580	765 647 101	to	7 190	792 145 211	to	5 230	809 886 879	to	6 930
756 876 031	to	6 120	765 813 781	to	4 029	792 391 381	to	1 620	809 890 489	to	0 500
756 876 151	to	6 240	765 879 314	to	9 390	792 452 779	to	2 790	810 323 734	to	3 760
756 970 129	to	0 140	765 954 001	to	4 030	792 772 728	to	2 770	810 367 116	to	7 140
757 059 613	to	9 630	766 120 286	to	0 320	792 903 511	to	3 990	810 526 351	to	6 500
757 078 540	to	8 560	766 125 716	to	5 750	793 282 518	to	2 533	810 806 911	to	6 940
757 086 209	to	6 240	766 158 824	to	8 840	794 041 831	to	2 040	810 807 211	to	7 240
757 240 591	to	0 650	766 388 433	to	8 460	794 397 709	to	7 780	811 423 021	to	3 110
757 277 371	to	7 700	766 509 421	to	9 660	794 581 741	to	2 040	811 517 221	to	7 239
757 291 591	to	2 730	766 572 901	to	3 020	794 592 122	to	2 150	811 721 101	to	1 130
757 964 251	to	4 280	766 748 500	to	8 521	795 032 251	to	2 340	812 025 721	to	5 900
758 067 001	to	7 090	767 024 341	to	4 370	795 796 291	to	6 350	812 093 073	to	3 130
758 105 221	to	5 250	767 326 471	to	6 590	796 070 139	to	0 160	812 100 821	to	0 840
758 324 941	to	5 000	767 332 561	to	2 950	796 143 151	to	3 630	812 465 251	to	5 610
758 593 628	to	3 650	768 009 841	to	9 960	796 159 725	to	9 740	812 918 341	to	8 670
758 709 038	to	9 060	768 011 489	to	1 520	796 169 306	to	9 340	812 918 701	to	8 760
758 744 101	to	4 160	768 177 980	to	7 990	796 373 406	to	3 430	813 050 491	to	0 520
758 850 883	to	0 900	768 391 081	to	1 170	796 602 961	to	3 050	813 073 171	to	3 200
758 860 951	to	1 550	768 661 569	to	1 650	796 708 441	to	8 500	813 398 476	to	8 550
759 152 851	to	2 880	769 000 051	to	0 080	796 886 281	to	6 430	813 713 971	to	4 000
759 740 941	to	1 090	769 050 841	to	0 900	796 901 701	to	2 000	813 858 121	to	8 150
760 004 596	to	4 610	769 159 081	to	9 178	796 975 466	to	5 590	814 789 330	to	9 349
760 118 191	to	8 250	769 737 496	to	7 510	797 272 917	to	2 950	814 984 656	to	4 680
760 155 001	to	5 090	769 778 491	to	8 730	797 519 441	to	9 460	815 016 020	to	6 030
760 378 002	to	8 020	769 827 331	to	7 450	797 519 731	to	0 240	815 199 410	to	9 420
760 692 722	to	2 749	770 216 071	to	6 100	797 535 181	to	5 330	815 240 491	to	0 520
761 055 460	to	5 480	770 723 281	to	3 400	797 646 151	to	6 180	815 755 591	to	5 620
761 169 781	to	9 810	770 790 451	to	0 480	798 040 053	to	0 080	815 755 622	to	5 650
761 504 941	to	5 120	770 915 150	to	5 490	798 055 813	to	5 830	815 806 381	to	6 680
761 516 836	to	6 910	771 455 551	to	5 610	798 055 891	to	5 950	816 126 834	to	6 870
761 613 588	to	3 600	771 609 661	to	9 690	798 326 371	to	6 520	816 156 721	to	6 780
761 688 631	to	8 690	771 932 551	to	2 580	798 339 167	to	9 210	816 580 903	to	0 920
761 805 199	to	5 240	772 057 224	to	7 440	798 562 411	to	2 440	816 945 571	to	5 600
761 826 106	to	6 120	772 162 660	to	3 070	798 632 461	to	2 490	817 253 011	to	3 280
761 881 171	to	1 560	772 718 615	to	8 640	798 807 151	to	7 510	817 763 881	to	4 060
761 975 641	to	5 670	772 940 140	to	0 160	798 944 761	to	5 030	818 330 562	to	0 610
761 975 886	to	5 895	772 970 886	to	0 940	799 118 616	to	8 640	818 459 641	to	9 670
762 304 144	to	4 170	773 009 419	to	9 430	799 133 191	to	3 220	818 926 273	to	6 320
762 324 931	to	4 960	773 112 031	to	2 060	799 177 626	to	7 650	818 950 351	to	0 380
762 439 261	to	9 290	773 125 387	to	5 410	799 854 751	to	5 200	818 962 492	to	2 530
762 524 158	to	4 220	773 179 320	to	9 410	800 044 320	to	4 410	819 032 341	to	2 730
762 584 872	to	4 970	773 202 989	to	3 140	800 211 901	to	2 440	819 127 054	to	7 080

819 278 540	to	8 670	822 703 442	to	3 470	826 226 644	to	6 670	828 539 341	to	9 370
819 544 681	to	4 740	822 900 991	to	1 020	826 582 951	to	3 430	828 732 331	to	2 390
819 928 441	to	8 650	822 925 951	to	6 100	826 720 201	to	0 230	828 807 781	to	7 840
820 034 406	to	4 430	823 284 931	to	4 990	827 005 671	to	5 830	828 830 952	to	0 963
820 070 761	to	1 540	823 293 031	to	3 210	827 287 861	to	7 950	828 939 781	to	0 050
820 191 342	to	1 360	823 556 011	to	6 100	827 291 502	to	1 520	829 002 721	to	2 870
820 274 856	to	4 880	824 078 341	to	8 370	827 575 381	to	5 470	829 005 301	to	5 540
820 600 171	to	0 230	824 156 325	to	6 340	827 609 085	to	9 100	829 080 241	to	0 330
821 172 241	to	2 360	824 511 252	to	1 270	827 619 811	to	9 840	829 160 986	to	1 000
821 229 661	to	9 720	824 588 281	to	8 370	827 883 511	to	3 600	829 176 841	to	6 930
821 229 743	to	9 780	825 140 397	to	0 460	828 160 441	to	0 530	829 471 561	to	1 590
821 903 731	to	3 910	825 409 651	to	9 680	828 376 201	to	6 260	829 561 065	to	1 080
821 927 841	to	7 850	825 472 171	to	2 200	828 441 602	to	1 630	829 566 481	to	6 510
822 505 801	to	5 830	826 042 898	to	2 920	828 539 316	to	9 340	829 569 931	to	9 960

— Criminal Investigations Group, U.S. Postal Inspection Service, 10-8-20

Verifying U.S. Postal Service Money Orders

Follow these steps to cash a Postal Service™ money order:

1. Check that the amount does not exceed the legal limit: \$1,000 for domestic, and \$700 for international Postal Service money orders.
2. Check that the proper security features are present:
 - When held to the light, a watermark of Benjamin Franklin is repeated from top to bottom on the left side.
 - When held to the light, a dark line (security thread) runs from top to bottom with the word “USPS” repeated.
 - When there is discoloration around the dollar amounts, this might indicate the amounts were changed.

These appear in Postal Service Notice 299, *U.S. Postal Money Order Reference Card*, or online at usps.com/shop/money-orders.htm.

3. If the money order seems suspicious, call the U.S. Postal Service Money Orderxxer Verification System at 866-459-7822.

Provide this information to local banks and retailers, as they also receive Postal Service money orders for cashing.

— Delivery and Retail
Customer Service Operations, 10-8-20

Counterfeit Canadian Money Order Forms

Do Not Cash

To be posted and used by retail window employees. As directed, destroy previous notices. Destroy all interim notices when the numbers listed appear in the *Postal Bulletin*.

671,819,086	683,594,542	687,262,503
676,612,640	684,683,610	687,262,525
677,891,039	686,619,878	687,262,526
678,282,493	686,619,886	687,287,578
678,916,031	686,619,887	687,287,581
679,552,215	686,794,382	687,287,582
679,694,334	686,794,426	694,063,898
679,751,983	686,794,427	694,063,899
679,800,207	686,794,431	694,063,980
681,130,536	687,262,502	701,321,725
681,844,376		

— Criminal Investigations Group,
U.S. Postal Inspection Service, 10-8-20

Toll-Free Number Available to Verify Canadian Money Orders

The Canada Post Corporation has a toll-free number that cashing agents can call to verify the validity of Canadian Postal Money Orders. The number is 800-563-0444.

This toll-free number is printed on the back of the Canadian Postal Money Orders.

— Criminal Investigations Group,
U.S. Postal Inspection Service, 10-8-20



55 cents

Price of a First-Class Mail Forever stamp, effective Jan. 27, 2019

Other Information

Overseas Military/Diplomatic Mail

Mail addressed to military and diplomatic post offices overseas is subject to certain conditions or restrictions of mailing regarding content, preparation, and handling. The APO/FPO/DPO table outlines these conditions by APO/FPO/DPO ZIP Codes™ through the use of footnoted mailing restrictions codes (see the [Restrictions](#) page following the table).

Acceptance clerks must use the table with the Retail System Software terminal to determine which APO/FPO/DPO ZIP Codes are active and which conditions of mailing apply.

The entries under “Changes” appear in bold in the following APO/FPO/DPO table:

Changes

APO/FPO/DPO	Action	Effective Date	See Restrictions
APO AE 09016	Add F3	09/17/2020	B-C-D-E-F1-F3-H-M-R-S-U
FPO AE 09631	Close	10/01/2020	
APO AE 09705	Add F3, S	09/18/2020	B-C-C1-F1-F3-M-R-R1-S-U
APO AA 34042	Add F3	09/21/2020	A-B-C-F-F1-F3-M-N-R-S-U-V-W-Z1
APO AP 96264	Add F3, S	09/18/2020	A-B-C-F1-F3-R-S-U
APO AP 96319	Add F3, S	09/18/2020	B-C-F3-M-R-S-W
APO AP 96336	Add F3, S	09/16/2020	B-C-F3-M-R-S-V-W

We have eliminated “Not Active” entries from the table below to save space and paper.

APO/FPO/DPO Table

APO/ FPO/ DPO	See Restrictions	APO/ FPO/ DPO	See Restrictions	APO/ FPO/ DPO	See Restrictions	APO/ FPO/ DPO	See Restrictions
09001	B-C-D-E-F1-F3-H-M-R-S	09020	B-C-D-E-F3-H-M-R-S-U	09104	B-C-D-F3-H-M-R-S-U-Z1	09171	A-B-C1-C2-E3-F-F1-F3-J-L-M-N-R-R1-S-T-V-X-Z1
09002	A-B-F-F3-H-N-Q-R-S-V-Z-Z1	09021	B-C-D-E-F3-H-M-R-S-U-Z1	09107	B-C-D-E-F3-H-M-R-S-U	09172	B-C-D-E-F3-H-M-R-S-U
09003	B-C-D-E-F3-H-M-P-R-S-U	09034	B-C-D-E-F3-H-M-R-S-U	09112	B-C-D-E-F3-H-M-R-S-U	09173	B-C-D-E-F3-H-M-R-S-U
09004	B-C-D-E-F3-H-M-R-S-U	09378	A-B-C1-E2-F-F1-F3-H1-I3-M-N-R-R1-S-T-V-Z-Z1	09113	A-B-F-F3-H-N-Q-R-S-V-Z-Z1	09174	B-C-C2-F-F1-F3-I3-L-N-R-R1-S-T-V-X-Z-Z1
09005	B-C-D-E-F3-H-M-P-R-S-U	09410	C2-F-F1-F3-N-R-S-U2	09114	B-C-D-E-F3-H-M-R-S-U	09175	A-B-C1-C2-E2-F-F1-F3-H1-J-L-M-N-R-R1-S-T-V-W-X-Z1
09006	B-C-D-E-F3-H-M-R-S-U	09044	B-C-D-F1-F3-H-R-S-U	09115	A-B-F-F3-H-N-Q-R-S-V-Z-Z1	09176	A-B-C2-F-F1-F3-J-L-M-N-R-R1-S-T-V-X-Z1
09008	A-B-F-F3-H-N-Q-R-S-V-Z-Z1	09046	B-C-D-E-F3-H-M-R-S-U	09116	A-B-F-F3-H-N-Q-R-S-V-Z-Z1	09177	B-C-D-E-F3-H-M-R-S-U
09009	B-C-D-E-F3-H-M-R-S-U-Z1	09049	B-C-D-E-F3-H-M-R-S-U	09123	B-C-D-E-F3-H-M-R-S-U-Z1	09178	B-C1-C2-E2-F1-F3-I3-L-M-N-R-S-T-V-X-Z-Z1
09010	B-C-D-E-F3-H-M-R-S-U2	09053	B-C-D-E-F3-H-M-R-S-U	09125	A-B-C-F-F1-F3-H-N-R-R1-S-V-V1	09180	B-C-D-E-F3-H-M-R-S-U
09011	B-C-D-E-F3-H-M-R-S-U	09060	B-C-D-E-F1-F3-H-M-N-R-S-U-Z1	09126	B-C-D-F3-H-M-P-R-S-Z1	09186	B-C-D-E-F3-H-M-P-R-S-U
09012	B-C-D-E-F3-H-M-R-S-U-Z1	09067	B-C-D-E-F3-H-M-R-S-U	09128	B-C-D-E-F3-H-M-R-S-U	09203	A-B-C-C1-C2-F-F1-F3-I3-J-L-M-N-R-R1-T-V-Z-Z1
09013	B-C-D-E-F-F1-F3-H-M-R-S-U-Z1	09068	B-C-D-E-F3-H-R-S-U-Z1	09131	B-C-D-E-F3-H-M-R-S-U	09204	B-C-F3-M-N-R-S-V-Z1
09014	B-C-D-E-F3-H-M-P-R-S-U	09069	A-B-C-D-E-F3-H-N-S-U-V	09136	B-C-D-E-F1-F3-H-M-P-R-S-U	09211	B-C-D-E-F3-H-M-P-R-S-U
09015	A-B-C-C1-C2-F-F1-F3-J-L-M-N-R-R1-S-V-Z1	09079	B-C-D-E-F3-H-M-R-S-U	09138	B-C-D-F3-H-M-R-S-U	09213	B-C2-F-F1-F3-H-J-L-M-N-R-R1-T-U-V-Z1
09016	B-C-D-E-F1-F3-H-M-R-S-U	09090	B-C-D-E-F3-H-M-R-S-U	09140	B-C-D-E-F3-H-M-R-S-U	09214	B-C-D-E-F3-H-M-R-S-U-Z1
09017	A-B-F-F3-H-N-Q-R-S-V-Z-Z1	09094	B-C-D-F3-H-M-P-R-S-Z1	09142	B-C-D-E-F3-H-M-R-S-U	09216	B,C,F1,F3,M,N,R,S,V,Z1
09018	A-B-F-F3-H-N-Q-R-S-V-Z-Z1	09095	B-C-D-E-H-M-R-U	09154	B-C-D-E-F3-H-M-R-S-U	09227	B-C-D-E-F3-H-M-R-S-U
		09096	B-C-D-E-F3-H-M-R-S-U	09160	B-C-C2-D-F-F1-F3-H-J-L-M-N-R-R1-T-U-V-Z1		
		09103	A-B-F-F3-H-N-Q-R-S-V-Z-Z1	09170	A-B-C2-F-F1-F3-J-L-M-N-R-R1-S-T-V-X-Z1		

APO/ FPO/ DPO	See Restrictions	APO/ FPO/ DPO	See Restrictions	APO/ FPO/ DPO	See Restrictions	APO/ FPO/ DPO	See Restrictions
09240	A-B-C1-F-F3-H-N-R-S-V	09316	A-B-C1-E2-F-F1-F3-H1-I3-M-N-R-R1-S-T-V-Z1	09467	B-E-E1-F-F3-J-L-M-N-R-S-T-V-X-Z1	09554	B-F-F1-R-R1-V
09241	A-B-F3-N-R-S-U-Z1	09318	A-B-C1-E2-F-F3-H1-M-N-R-R1-S-V-Z1	09468	B-C-C1-F3-M-R-S-U-Z1	09556	B-F-F1-R-R1-V
09242	A-B-C1-F-F3-H-N-R-S-V	09319	A-B-C-C1-E2-F-F1-F2-F3-H1-R-R1-S-U2-V-Z1	09469	B-C-C1-F3-R-S-U-Z1	09564	B-F-F1-R-R1-V
09250	B-C-D-E-F3-H-M-R-S-U	09320	A-B-C1-E2-F-F3-H1-M-N-R-R1-S-V-Z1	09487	A-B-C-C1-C2-E2-F1-F3-I3-L-M-N-R-R1-S-T-V-W-X-Z1	09565	B-F-F1-R-R1-V
09261	B-C-D-E-F3-H-M-N-R-S-U-V-Z1	09321	A-B-C1-E2-F-F3-H1-M-N-R-R1-S-V-Z1	09488	A-B-C-C1-C2-E2-F3-J-L-M-N-S-T-V-W-X-Z1	09566	B-C2-E2-E3-F-F1-F3-R-R1-S-V-Z1
09263	B-C-D-E-F3-H-M-R-S-U	09322	A-B-C1-E2-F-F3-H1-M-R-R1-S-V-Z1	09489	A-B-C-C1-C2-E2-F1-F3-L-M-N-R-R1-S-T-V-W-X-Z1	09567	B-C2-E2-E3-F-F1-F3-R-R1-V-Z1
09264	B-C-E-F3-H-M-R-S-U	09330	A-B-C1-C2-D-E-E2-F1-F3-H-H1-M-R-R1-S-V-Z1	09470	B-C-C1-F3-M-R-S-U-Z1	09568	B-V
09265	B-C-D-F-F1-H-J-L-M-N-R-S-T-U-V-Z1	09333	A-B-C-C1-E2-F-F1-F3-H1-I3-M-N-R-R1-S-V-V1-Z-Z1	09494	B-C-C1-F3-M-R-S-U-Z1	09569	B-C2-E2-E3-F-F1-F3-R-R1-V-Z1
09266	A-B-F3-R-S-U-V-Z1	09340	A-B-C1-F-F3-H-N-R-S-V	09498	B-C1-C2-F-F1-F3-J-L-N-R-R1-T-V-Z1	09570	A-B-F-F1-F3-R-R1-S-V
09276	A-B-F-F3-I3-L-M-N-R-S-T-V-X-Z1	09343	A-B-C1-F-F3-M-N-R-R1-S-V-Z1	09501	B-V	09573	B-C2-E2-E3-F-F1-F3-R-R1-S-V-Z1
09277	A-B-E-E1-E2-F1-F3-I3-L-N-R-S-T-V-X-Z1	09347	A-B-C1-E2-F-F3-H1-M-R-R1-S-V-Z1	09502	B-V	09574	B-F-F1-R-R1-V
09278	A-B-F-F3-I3-L-M-N-R-S-T-V-X-Z1	09348	A-B-C1-E2-F-F1-F3-H1-I3-M-N-R-R1-S-T-V-Z1	09503	B-F-F1-R-R1-V	09575	B-F-F1-R-R1-V
09279	A-B-E-E1-F-F3-I3-L-M-N-R-S-T-V-X-Z1	09352	A-B-C1-E2-F-F3-H1-M-R-R1-S-V-Z1	09504	B-V	09576	B-F-F1-R-R1-V
09283	A-B-E-E1-F-F3-L-M-N-R-S-T-V-X-Z1	09354	A-B-C1-E2-F-F3-H1-M-R-R1-S-V-Z1	09505	B-V	09577	B-F3-S-V
09285	A-B-C-E-E-1-F1-F3-H-I3-L-M-N-R-S-T-V-X-Z1	09355	A-B-C1-E2-F-F3-H1-M-R-R1-S-V-Z1	09506	B-V	09578	B-F-F1-F3-R-R1-S-V-Z1
09289	B-E2-F1-F3-H1-J-L-M-N-R-R1-S-T-U2-V-X-Z1	09356	A-B-C1-E2-F-F3-H1-M-N-R-V-Z1	09507	B-V	09579	B-F-F1-R-R1-V
09290	A-B-F1-F3-J-L-M-N-R-S-T-U2-V-X-Z1	09357	A-B-C1-E2-F-F3-H1-M-R-R1-S-V-Z1	09508	B-F-F1-R-R1-V	09581	B-F-F1-F3-R-R1-S-V
09301	A-B-C1-C2-E2-F-F1-F3-H1-I3-L-M-N-R-R1-S-T-U4-V-Z-Z1	09363	A-B-C1-E2-F-F3-H1-M-R-R1-S-V-Z1	09509	B-F-F1-R-R1-V	09582	B-E2-E3-F-F1-F3-R-R1-V-Z1
09302	A-B-C1-F-F1-F3-H-M-N-R-S-V-Z1	09365	A-B-C-C1-E2-F-F3-H1-M-N-R-V-Z1	09510	A-B-C1-E2-F-H1-M-R-R1-V-Z1	09583	B-F-F1-F3-I3-J-R-R1-S-V-V1
09304	A-B-C-C1-D-E2-F-F1-F3-H1-J-L-M-N-R-R1-S-T-V-Z1	09366	A-B-C-C1-E2-F-F1-F3-H-H1-M-R-R1-S-V-Z1	09511	B-F-F1-R-R1-V	09586	B-C2-F-F1-F3-R-R1-S-V
09305	A-B-C1-E2-F-F1-F3-H1-I3-M-N-R-R1-S-T-V-Z1	09401	B-C-C1-F3-M-R-S-U-Z1	09512	B-F-F1-F3-R-R1-S-V	09587	B-C2-E2-E3-F-F1-F3-R-R1-S-V-Z1
09306	A-B-C1-E2-F-F1-F3-H1-R-R1-S-U2-V-Z1	09403	B-C-C1-F3-M-R-S-U-Z1	09513	B-F-F1-F3-R-R1-S-V-V1	09588	B-F-F1-F3-R-R1-S-V
09307	B-F3-N-R-R1-S-V-Z1	09421	B-C-C1-F3-M-R-S-U-Z1	09514	B-F-F1-F3-R-R1-S-V-V1	09589	B-F-F1-F3-R-S-V
09309	A-B-C-C1-C2-E2-F-F1-F3-H1-M-N-R-R1-S-V-Z1	09447	B-C-C1-F3-M-R-S-U-V-Z1	09517	B-F-F1-F3-R-R1-S-V	09590	B-V
09310	A-B-C1-C2-E2-F-F1-F3-H1-I3-L-M-N-R-R1-S-T-U4-V-Z-Z1	09454	B-C-C1-F3-M-R-S-U-V-Z1	09520	B-F-F1-F3-R-R1-S-V	09591	B-C2-E2-E3-F-F1-F3-R-R1-S-V-Z1
09311	A-B-C1-C2-E2-F-F1-F3-H1-I3-L-M-N-R-R1-S-T-U4-V-Z-Z1	09456	B-C-C1-F3-M-N-R-S-U-V-Z1	09522	B-F-F1-F3-R-S-V	09592	B-F-F1-F3-R-R1-S-V
09312	A-B-C1-C2-E2-F-F1-F3-H1-I3-L-M-N-R-R1-S-T-U4-V-Z-Z1	09459	B-C-C1-F3-M-R-S-U-Z1	09523	B-F-F1-R-R1-V	09593	B-F-F1-F3-R-S-V
09313	A-B-C-C1-E2-F-F1-F2-H1-R-R1-V-Z1	09461	B-C-C1-F3-M-P-R-S-U-Z1	09524	B-F-F1-R-R1-V	09594	B-C1-E2-F-F1-F3-R-R1-S-V
09315	A-B-C1-E2-F-F3-N-R-R1-S-V-Z1	09463	B-C-C1-F3-M-R-S-U-Z1	09532	B-F-F1-F3-R-R1-S-V	09595	B-F-F1-F3-I3-J-R-R1-S-V-V1-Z1
		09464	B-C-C1-F3-R-S-U-Z1	09533	B-V	09596	B-F-F1-R-R1-V
				09534	B-F-F1-F3-R-R1-S-V	09599	B-F-F1-R-R1-V
				09541	A-B-C-F-F3-M-N-S-V-Z1	09600	B-C-C2-F-F1-F3-R-S-U-Z1
				09542	A-B-C-F-F3-M-N-S-V-Z1	09602	B-C-F-F1-N-R-U-V
				09543	A-B-C-F-F3-M-N-S-V-Z1	09603	B-C-F-F1-F3-R-S-U-V-Z1
				09544	A-B-C-F-F3-M-N-S-V-Z1	09604	B-C-F-F1-F3-P-R-S-U-V-Z1
				09545	A-B-C-F-F3-M-N-S-V-Z1	09605	B-C-D-F3-H-M-R-S-U-V
				09550	B-F-F1-R-R1-V	09606	B-C-D-F3-H-M-R-S-U-V
						09608	B-C-F-F3-N-R-S-U-V-Z1

APO/ FPO/ DPO	See Restrictions	APO/ FPO/ DPO	See Restrictions	APO/ FPO/ DPO	See Restrictions	APO/ FPO/ DPO	See Restrictions
09609	B-C-F-F3-N-R-S-U-Z1	09717	A-B-F3-M-R-S-V-W-Z1	09753	A-B-F-N-V-Z1	09821	A-B-C-F-F3-N-R-S-V-Z1
09610	B-C-F-F1-F3-M-R-S-U-V-Z1	09718	B-F-F1-J-L-M-N-R-T-U-V-Z1	09754	A-B-F-F3-H-L-N-Q-R-S-V-Z1	09822	A-B-C-F-F3-M-R-S-V-Z1
09613	B-C-F-N-U-V	09719	B-C-D-F3-M-R-S-U-V-Z1	09755	A-B-C-C1-D-F-F1-F3-J-L-M-N-Q-R-R1-S-T-V-Z1	09823	A-B-C1-C2-F-F1-F3-J-L-M-N-R-R1-T-V-Z1
09614	A-B-C1-C2-E2-F-F1-F3-H1-J-L-M-N-R-R1-T-V-W-Z1	09720	B-F3-M-R-S-U-V-Z1	09758	A-B-F-F1-F3-M-N-R-R1-S-V-Z1	09824	A-B-C-F-F3-M-R-S-V-Z1
09616	B-C-F3-M-R-S-U-V-Z1	09722	A-B-F-F3-H-N-Q-S-V-Z1	09759	A-B-C-C1-C2-E2-F-F1-F3-J-L-N-R-R1-T-V-Z1	09825	A-B-C1-C2-F-F1-F3-J-L-M-N-R-R1-T-V-Z1
09617	B-C-F-F3-R-U-Z1	09723	B-C2-F-F1-F3-J-L-M-N-R-R1-T-V-Z1	09761	B-F-F1-F3-M-N-R-R1-S-V-Z1	09826	A-B-C1-C2-E1-E2-E3-F-F1-F3-J-L-M-N-R-R1-T-V-W-Z1
09618	B-C-F-F3-R-S-U-Z1	09724	B-C-C1-F1-M-R-R1-U	09762	A-B-C2-E3-F-F1-F3-J-L-N-R-R1-T-V-Z1	09827	A-B-F-F1-J-L-M-N-R-T-V-Z1
09620	B-C-F-F3-R-S-U-Z1	09725	A-B-F-F3-H-N-Q-R-S-V-V1-Z-Z1	09769	A-B-C-C1-C2-F-F1-F3-J-L-M-N-R-R1-T-V-Z1	09828	A-B-C1-C2-F-F1-F3-I3-L-N-R-R1-T-V-Z1
09621	B-C-F-F3-R-U-Z1	09726	B-F-F1-J-L-M-N-R-T-U-V-Z1	09777	A-B-C-C1-C2-E1-F-F1-F3-J-L-M-N-R-R1-T-V-Z1	09829	B-C-N-R-V-Z1
09622	B-C-F-F3-R-S-U-Z1	09727	A-B-C1-C2-F-F1-F3-J-L-M-N-R-R1-T-V-Z1	09780	A-B-F-F3-H-N-R-S-V	09830	B-C-F-F1-F3-J-L-M-N-R-R1-S-T-V-Z1
09623	B-C-F-F3-R-S-U-V-Z1	09728	A-B-C-C1-C2-F-F1-F3-J-L-N-R-R1-T-V-Z1	09789	A-B-C2-F-F3-N-R-S-V-Z1	09831	B-C1-C2-F-F1-F3-J-L-N-R-R1-T-V-Z1
09624	B-C-C2-F-F1-F3-I3-L-N-R-R1-T-U-V-Z1	09729	B-C-F-F3-N-R-R1-S-U-V-Z1	09801	A-B-C1-E2-F-F3-H1-M-N-R-R1-S-V-Z1	09832	B-C1-E2-F1-F3-N-R-S-V-Z1
09625	B-C-F-F3-N-R-S-U-Z1	09730	A-B-C1-C2-F-F1-F3-J-L-M-N-R-R1-T-V-Z1	09802	A-B-C-C2-D-F-F1-F3-H1-I3-L-M-N-R-R1-S-T-V-W-Z1	09833	B-C1-E2-F1-F3-N-R-S-V-Z1
09626	B-C-F-F3-R-U-Z1	09731	A-B-C1-C2-F-F1-F3-J-L-M-N-R-R1-T-V-Z1	09803	A-B-C-C2-E-E2-E3-F1-F3-H-H1-J-M-N-R-R1-S-U-V-Z1	09834	B-E2-E3-F-F1-F3-R-R1-S-U-Z1
09627	B-C-F-F3-R-S-U-V-Z1	09732	B-F-F3-N-S-V-Z1	09804	A-B-F-F1-F3-M-N-R-S-V-Z1	09836	A-B-C1-C2-F-F1-F3-J-L-M-N-R-R1-V-Z1
09630	B-C-F-F3-R-S-U-V	09733	B-F-F3-N-R-S-V-Z	09805	B-E2-E3-F-F1-F3-R-R1-S-Z1	09837	B-E2-E3-F1-F3-R-S-V-Z1
09633	B-C-D-F-F1-F3-M-R-S-U-U1-U2-U3-V-Z1	09734	A-B-C-C1-C2-F-F1-F3-I3-J-L-M-N-R-R1-T-V-Z1	09806	A-B-C1-C2-E2-F-F1-F3-H1-J-L-M-N-R-R1-T-V-Z1	09838	B-E2-E3-F-F1-F3-R-S-U-Z1
09636	B-C-F-F3-R-U-V-Z1	09735	B-F3-N-R-S-V-Z1	09808	A-B-C1-C2-E2-F-F1-F3-H-H1-J-L-N-R-R1-T-V-Z1	09841	A-B-F3-N-R-S-U-Z1
09642	B-C2-F-F1-F3-J-L-M-N-R-T-U-V	09736	A-B-C1-F-F1-F3-J-L-M-N-R-R1-T-V-Z1	09809	B-C1-C2-E3-F-F1-F3-J-L-N-T-V-Z1	09842	A-B-C1-C2-F-F1-F3-J-L-N-R-R1-T-V-Z1
09643	B-C-F3-M-R-S-U-V-Z1	09737	A-B-C1-C2-F-F1-F3-I3-J-L-M-N-R-R1-T-V-W-Y-Z1	09810	A-B-F-F1-F3-N-R-S-V-Z1	09844	A-B-C1-C2-F-F1-F3-J-L-M-N-R-R1-T-V-Z1
09645	B-C-F-F1-F3-R-S-U-Z1	09738	A-B-C1-C2-F-F1-F3-J-L-M-N-R-R1-T-V-Z1	09811	A-B-C-C2-E-E2-E3-F1-F3-H-H1-J-M-N-R-R1-S-U-V-Z1	09845	A-B-C1-C2-E3-F-F1-F3-J-L-M-N-R-R1-T-V-Z1
09647	B-F1-F3-M-N-R-S-U-Z1	09739	A-B-C1-C2-F-F1-F3-J-L-M-N-R-R1-T-V-Z1	09812	B-E2-E3-F-F1-I-J-L-N-R-T-U-V-Z1	09846	A-B-C1-C2-F-F1-F3-J-L-N-R-R1-T-V-Z1
09648	B-F3-N-R-S-U-V-Z1	09741	A-B-C1-C2-E2-F-F1-F3-H1-J-L-M-N-R-R1-T-V-W-Y-Z1	09813	A-B-C1-C2-E2-E3-F-F1-F3-J-L-N-R-R1-T-V-Z1	09847	B-C-C2-F-F1-F3-J-L-M-N-R-R1-S-U2-V-Z1
09649	B-F3-N-R-S-U-Z1	09742	A-B-C2-F-F1-F3-J-L-M-N-R-S-T-V-Z1	09814	B-C2-E2-E3-F-F1-F3-I3-J-L-N-R-R1-T-V-Z1	09848	A-B-F-F3-M-R-S-V-Z1
09701	A-B-C1-C2-F-F1-F3-J-L-M-N-R-R1-T-V-Z1	09743	A-B-F-F3-H-N-Q-R-S-V-Z1	09816	A-B-C1-C2-E2-E3-F-F1-F3-J-L-N-R-R1-T-V-Z1	09853	B-C1-E2-F-F1-F3-H1-N-R-R1-S-U2-V-Z1
09702	B-C-C1-F1-F3-M-R-R1-S-U	09744	A-B-C1-C2-F-F1-F3-J-L-M-N-R-R1-T-V-Z1	09817	A-B-C1-C2-E2-E3-F-F1-F3-H-H1-J-L-M-N-R-R1-T-V-Z1	09854	A-B-C1-C2-F-F1-F3-J-L-N-R-R1-S-T-V-Z1
09704	B-C-V-V1	09745	A-B-F-F1-F3-M-N-R-R1-S-V-Z1	09818	A-B-C-F-F3-M-S-V-Z1	09855	A-B-C1-E2-F-F1-F3-H1-M-R-R1-S-U2-V-Z1
09705	B-C-C1-F1-F3-M-R-R1-S-U	09748	A-B-C1-C2-F-F1-F3-J-L-M-N-R-R1-T-V-Z1	09820	A-B-C2-F-F1-F3-H-H1-J-L-M-N-R-R1-T-V-Z1	09856	B-C-C1-C2-F-F1-F3-H-H1-J-L-M-N-S-T-V-Z1
09706	B-C-F3-M-N-R-S-U-V-Z1	09749	A-B-F-F3-H-N-R-S-U-V-Z1	09858	A-B-C-C1-C2-E2-E3-F1-F3-H-H1-J-M-N-R-R1-S-U-V-Z1	09857	A-B-C2-E2-F-F1-F3-I3-L-M-N-R-R1-S-T-V-Z1
09707	B-C2-F-F1-F3-J-L-M-N-R-R1-T-V-Z1	09750	A-B-C1-C2-F-F1-F3-J-L-M-N-R-R1-T-V-Z1	09859	B-C1-E2-E3-F-F1-F3-H1-R-R1-S-U-Z1		
09708	B-C-C1-F1-M-R-R1-U	09751	B-C-D-E-F3-H-M-R-S-U				
09709	B-C1-C2-E2-F-F1-F3-H1-J-L-N-R-R1-T-V-Z1	09752	B-C-D-F1-F3-H-R-S-U				
09710	B-C-C1-F-F1-J-L-M-N-R-R1-T-U-V-Z1						
09712	A-B-F-F3-H-R-S-U-V-Z1						
09714	B-C-C1-F1-F3-M-R-R1-S-U						
09715	B-F-F1-J-L-M-N-R-T-V-Z1						
09716	B-C-C2-F-F1-F3-J-L-M-N-R-R1-T-V-Z1						

APO/ FPO/ DPO	See Restrictions	APO/ FPO/ DPO	See Restrictions	APO/ FPO/ DPO	See Restrictions	APO/ FPO/ DPO	See Restrictions
09860	A-B-C2-F-F1-F3-J-L-M-N-R-R1-S-T-V-Z1	34001	A-B-C1-C2-F-F1-F3-J-L-M-N-R-R1-S-T-V-Z1	34066	B-C1-C2-F-F1-F3-I3-J-L-M-N-R-R1-S-T-V-X-Z-Z1	96260	A-B-F-F1-F3-S-U
09861	A-B-F-F1-F3-N-R-R1-S-V-Z1	34002	B-C1-C2-F-F1-F3-J-L-M-N-R-R1-T-V-Z1	34067	B-C1-C2-F-F1-F3-J-L-M-N-R-R1-S-T-V-X-Z1	96262	A-B-F-F1-F3-R-S-U-V-Z1
09862	A-B-C-C2-F-F1-F3-I3-L-M-N-R-R1-S-T-V-X-Z-Z1	34004	B-C1-C2-F-F1-F3-J-L-M-N-R-R1-T-V-Z1	34068	B-C1-C2-F-F1-F3-J-L-M-N-R-R1-S-T-V-X-Z1	96264	A-B-C-F1-F3-R-S-U
09863	A-B-F-F1-F3-N-R-R1-S-V-V1-Z1	34007	B-F-F1-H-J-M-N-R-R1-V-Z1	34069	B-C1-C2-F-F1-F3-I3-J-L-M-N-R-R1-S-T-V-X-Z-Z1	96266	A-B-C-F1-F3-R-S-U
09864	A-B-C-C1-C2-E2-F1-F3-L-M-N-R-R1-S-T-V-W-Z1	34008	B-C1-C2-D-E1-F-F1-H-H1-J-L-M-N-R-R1-T-V-Z1	34078	B-F1-F3-N-R-S-V-Z1	96267	A-B-C-F1-R-U-V
09865	A-B-F3-R-S-U-V-Z1	34011	B-C1-C2-E2-F-F1-F3-J-L-M-N-R-R1-T-V-Z1	34080	B-F-F1-R-R1-V	96269	A-B-F1-F2-F3-R-S-U-Z1
09867	A-B-C-C1-C2-E2-F1-F3-L-M-N-R-R1-S-T-V-W-Z1	34020	B-C1-C2-F-F1-F3-J-L-M-N-R-R1-T-V-Z1	34081	B-F-F1-R-R1-V	96271	A-B-F-F1-F3-R-S-U
09868	A-B-E1-E2-E3-F1-F3-M-N-R-S-U-V-Z1	34021	B-C1-C2-F-F1-F3-J-L-M-N-R-R1-T-V-Z1	34082	B-F-F1-R-R1-V	96273	A-B-F-F1-F3-R-S-U
09869	A-B-C1-C2-E2-F1-F3-L-M-N-R-R1-S-T-V-W-Z1	34022	B-C1-C2-F-F1-F3-J-L-M-N-R-R1-T-V-Z1	34083	B-F-F1-R-R1-V	96275	A-B-F-F1-F3-R-S-U
09870	A-B-C1-C2-E2-F-F1-F3-H1-I3-L-M-N-R-R1-S-T-U4-V-Z-Z1	34023	B-C1-C2-F-F1-F3-J-L-M-N-R-R1-T-V-Z1	34084	B-F-F1-R-R1-V	96276	A-B-C-F1-R
09873	A-B-C1-C2-E2-F-F1-F3-H1-I3-L-M-N-R-R1-S-T-U-U4-V-Z-Z1	34024	B-C1-C2-F-F1-F3-J-L-M-N-R-R1-T-V-Z1	34085	B-F-F1-F3-R-R1-S-V	96278	A-B-C-F1-F3-R-S-U
09874	A-B-C1-C2-E2-F-F1-F3-H1-I3-L-M-N-R-R1-S-T-U-U4-V-Z-Z1	34025	B-F-F1-F3-J-L-M-N-R-R1-T-V-Z1	34086	B-F-F1-F3-R-R1-S-V	96283	A-B-F-F1-F3-S-U
09875	A-B-C1-C2-E2-F-F1-F3-H1-I3-L-M-N-R-R1-S-T-U-U4-V-Z-Z1	34030	B-C1-C2-F-F1-F3-J-L-M-N-R-R1-T-V-Z1	34087	B-E2-F-F1-F3-R-R1-S-V	96284	A-B-F-F1-F3-R-S-U
09877	A-B-C-C2-E-E2-E3-F1-F3-H-H1-J-M-N-R-R1-S-U-V-Z1	34031	B-C1-C2-F-F1-F3-J-L-M-N-R-R1-T-V-Z1	34088	B-F-F1-R-R1-V	96297	A-B-F-F1-F3-R-S-U
09880	A-B-C1-C2-E2-F-F1-F3-H1-J-L-N-R-R1-S-T-U-V-Z1	34032	B-C1-C2-F-F1-F3-J-L-M-N-R-R1-T-V-Z1	34089	B-F-F1-R-R1-S-V	96300	A-B-F3-M-R-S-V-Z1
09890	B-E2-F-H1-N-R-R1-U2-V-Z1	34033	B-C1-C2-F-F1-F3-I3-L-M-N-R-T-V-Z-Z1	34090	B-F-F1-R-R1-V	96301	A-B-F3-M-N-R-S-U2-W
09892	A-B-C1-C2-E2-F-F1-F3-J-L-M-N-R-R1-T-V-Z1	34034	B-C1-C2-F-F1-F3-I3-L-M-N-R-R1-T-V-Z-Z1	34091	B-E2-E3-F-F1-F3-R-R1-S-V-Z1	96303	B-C1-C2-F-F1-H-J-L-M-N-T-V-W-Z1
09895	A-B-C1-C2-E2-F-F1-F3-J-L-M-N-R-T-V-W-Z1	34035	B-C1-C2-F-F1-F3-H-J-L-M-N-R-R1-T-V-Z1	34092	B-F-F1-F3-R-R1-S-V	96306	B-F-F1-F2-F3-H-M-R-S-W-Z1
09898	B-C-C1-C2-E2-F-F1-F3-H1-N-R-R1-S-U2-V-Z1	34036	B-C1-C2-F-F1-F3-J-L-M-N-R-R1-T-V-Z1	34093	B-F-F1-F3-R-R1-S-V	96310	B-F3-M-R-S-W
09902	A-B-C1-E2-F-F3-H1-M-R-R1-S-V-Z1	34041	B-C1-C2-F-F1-F3-J-L-M-N-R-R1-T-V-Z1	34094	B-F-F1-R-R1-V	96311	B-F3-M-R-S-W
09903	B-C1-E2-F1-F3-S-V-Z1	34042	A-B-C-F-F1-F3-M-N-R-S-U-V-W-Z1	34095	B-F-F1-R-R1-V	96319	B-C-F3-M-R-S-W
09904	B-C1-E2-F1-F3-S-V-Z1	34050	B-V	96201	A-B-F-F1-F3-S-U	96321	B-F-F1-F2-F3-H-M-S-W-Z1
09908	A-B-F-F1-F3-N-R-R1-S-V-Z1	34051	B-V	96202	A-B-F-F1-F3-R-S-U	96322	B-F-F1-F2-F3-H-M-R-S-W-Z1
09909	A-B-F-F1-F3-N-R-R1-S-V-V1-Z1	34052	B-V	96203	A-B-F-F1-F3-R-S-U	96326	B-C-F-F3-M-R-S-W
09974	B-F1-F3-J-L-M-N-R-S-T-U2-V-X-Z1	34053	B-V	96204	A-B-F-F1-F3-R-S-U	96328	B-C-F3-M-R-S-W
09975	B-F1-F3-I3-L-M-N-R-S-T-U2-V-X-Z1	34054	B-V	96205	A-B-F-F1-F3-R-S-U	96331	A-B-F1-J-L-M-N-S-W
09976	B-F1-F3-J-L-M-N-R-S-T-U2-V-X-Z1	34055	B-C1-C2-F-F1-F3-J-L-M-N-R-R1-T-V-Z1	96206	A-B-F-F1-F3-R-S-U	96336	B-C-F3-M-R-S-V-W
09977	B-F1-F3-J-L-M-N-R-S-T-U2-V-X-Z1	34058	B-F-F1-F3-R-R1-S-V-Z1	96207	A-B-F-F1-F3-R-S-U-V	96337	B-F-F1-F3-M-R-R1-S-W
		34060	B-C1-C2-E2-F-F1-F3-J-L-M-N-R-R1-T-V-Z1	96208	A-B-F-F1-F3-R-S-U	96338	A-B-F3-M-R-S-U2-W
				96209	A-B-C1-C2-F-F1-J-L-M-N-T-U-V-Z1	96339	A-B-F3-M-R-S-U2-W
				96210	A-B-C1-C2-F-F1-F3-I3-L-M-N-R-R1-T-V-Z-Z1	96343	P
				96212	B-F-F1-F2-H-M-W-Z1	96346	B-F-F1-F2-H-M-W-Z1
				96213	A-B-C-F1-F3-R-S-U	96347	B-F-F1-F2-H-M-W-Z1
				96214	A-B-C-F1-F3-R-S-U	96349	B-F-F1-F2-F3-H-M-S-W-Z1
				96218	A-B-F-F1-F3-S-U	96350	B-F-F1-F2-F3-H-M-R-S-W-Z1
				96224	A-B-F-F1-F3-R-S-U	96351	B-F-F1-F2-F3-H-M-R-S-W-Z1
				96251	A-B-F-F1-F3-S-U	96362	B-F-F1-F2-M-W-Z1
				96257	A-B-F-F1-F3-S-U	96365	B-C-F3-M-R-S-V-W
				96258	F3-P-S	96367	B-C-F3-L-M-R-S-W
						96368	B-C-F3-M-R-S-W

APO/ FPO/ DPO	See Restrictions	APO/ FPO/ DPO	See Restrictions	APO/ FPO/ DPO	See Restrictions	APO/ FPO/ DPO	See Restrictions
96370	B-F-F1-F2-H-M-W-Z1	96516	B-C-D-E1-E2-F-F1-F3-H-H1-M-N-R-S-T-Z1	96598	B-F3-I3-N-R-S-V-V1	96657	B-F-F1-F3-R-R1-S-V
96371	B-F-F3-M-R-S-W	96517	B-C-D-E1-E2-F-F1-F3-H-H1-M-N-R-T-U-V-Z1	96599	B-F3-N-R-S-V	96660	B-F-F1-F3-R-R1-S-V
96372	B-M-W	96520	B-F-N-U3-V	96601	B-V	96661	B-F-F1-F3-R-R1-S-V
96373	B-M-W	96521	B-C1-C2-F-F1-J-L-M-N-R-R1-S-T-V-Z1	96602	B-V	96662	B-F-F1-F3-R-R1-S-V
96374	B-M-W	96530	A-B-C1-C2-F-F1-H-H1-J-L-M-N-R-R1-S-T-V-Z1	96603	B-V	96663	B-F-F1-F3-R-R1-S-V-V1
96375	B-F3-M-R-S-W	96531	A-B-C-F-F1-F3-H-M-N-R-S-U-V	96604	B-V	96664	B-V
96376	B-M-W	96532	A-B-C1-C2-F-F1-H-J-L-M-N-R-R1-S-T-V-Z1	96605	B-V	96665	B-V
96377	B-F3-M-S-W	96533	A-B-F-F1-F2-F3-S-U-Z1	96606	B-V	96666	B-F3-R-S-V
96378	B-M-W	96534	A-B-C1-C2-F-F1-J-L-M-N-R-R1-S-T-V-Z1	96607	B-V	96667	B-F-F1-F3-R-R1-S-V
96379	B-F3-M-R-S-W	96535	A-B-F-F1-F2-F3-S-U-Z1	96608	B-E2-F-H1-R1-U2-V-Z1	96668	B-F-F1-R-R1-V
96380	B-F3-M-R-S-W	96537	B-V-Z1	96609	B-E2-F-H1-R1-U2-V-Z1	96669	B-F-F3-R-R1-S-V
96382	B-M-W	96540	B-F1-F2-F3-S-Z1	96610	B-E2-F-H1-R1-U2-V-Z1	96670	B-V
96384	B-F3-M-S-W	96542	B-V-Z1	96611	B-E2-F-H1-R1-U2-V-Z1	96671	B-F-F1-F3-R-R1-S-V
96385	B-M-W	96543	B-F-F1-F2-F3-P-S-V-Z1	96612	B-V	96672	B-F-F1-F3-R-R1-S-V
96386	B-F3-M-S-W	96548	A-B-F-F1-F3-H-M-R-S-U	96613	B-V	96673	B-F3-S-V
96387	B-F3-M-S-W	96549	A-B-C1-C2-F-F1-H-J-L-M-N-R-R1-S-T-V-Z1	96615	B-F-F1-R-R1-V	96674	B-F-F1-F3-R-R1-S-V
96388	B-F3-M-S-W	96550	A-B-H-M-N-U-V-Z1	96616	B-C2-F-F1-F3-R-R1-S-V	96675	B-F-F1-F3-R-R1-S-V
96389	B-M-W	96551	A-B-C1-C2-F-F1-H-J-L-M-N-R-R1-S-T-V-Z1	96617	B-F-F1-F3-R-R1-S-V	96677	B-F-F1-F3-R-R1-S-V
96401	B-C-F-F3-N-R-S-V-V1-Z1	96552	B-Z1	96619	B-V	96678	B-F-F1-F3-R-R1-S-V
96501	A-B-N-V	96553	A-B-F-F1-H-M-N-R-U	96620	B-F-F1-F3-R-R1-S-V	96679	B-F-F1-R-R1-V
96502	A-C1-F-F1-F3-M-N-Q-R-R1-S-T-U2-V	96554	A-B-C1-C2-F-F1-H-J-L-M-N-R-R1-S-T-V-Z1	96628	B-F-F1-F3-R-R1-S-V	96681	B-V
96504	A-B-C-C1-C2-F-F1-F3-I3-L-M-N-R-R1-T-V-W-Z-Z1	96555	B-F-F3-M-R-S-V	96629	B-F-F1-F3-R-R1-S-V	96682	B-V
96505	A-B-C-C1-C2-F-F1-F3-I3-L-M-N-R-R1-S-T-V-W-Z-Z1	96557	B-F-F3-M-R-S-V	96632	B-F-F1-F3-R-R1-S-V	96683	B-F-F1-F3-R-R1-S-V
96507	A-B-C1-C2-F-F1-H-J-L-M-N-T-V-Z1	96562	A-B-C1-C2-D-E2-E3-F-F1-H-H1-I3-L-M-N-R-R1-S-T-V-Z-Z1	96633	B-V	96686	B-V
96510	B-I3-N-V	96577	A-B-F-H-M-N-R-U	96641	B-V	96691	B-F-F1-F3-R-R1-S-V
96511	B-I3-N-V	96578	B-F1-F3-H-J-N-R-S	96642	B-V	96692	B-F-F1-F3-R-R1-S-V
96515	B-C-D-E1-F-F1-F3-H-H1-M-N-R-S-T-Z1	96595	B-F-F3-R-S-V-Z1	96643	B-F-F1-R-R1-V	96693	E2-F-F3-R-R1-S-V
				96644	B-V	96694	B-E2-F-F1-F3-I3-J-R-R1-S-V-V1-Z
				96645	B-V	96695	B-F-F1-R-R1-V
				96649	B-F-F1-F3-R-R1-S-V	96696	B-F-F1-R-R1-V
				96650	B-F-F1-R-R1-V	96698	B-V

RESTRICTIONS

LEGEND

PS Form 2976, *Customs — CN 22 (Old C 1) and Sender's Declaration* (green label)

PS Form 2976-A, *Customs Declaration and Dispatch Note*

PS Form 2976-B, *Priority Mail Express International Shipping Label and Customs Form*

ATF	= Bureau of Alcohol, Tobacco, Firearms, and Explosives
Box C	= Department of State (DOS) contractor personnel
Box R	= Retired military personnel
DPO	= Diplomatic Post Office
MPO	= Military Post Office
PACT	= Prevent All Cigarette Trafficking Act
PAL	= Parcel Airlift
PMEMS	= Priority Mail Express Military Service
PUB 52	= Publication 52, <i>Hazardous, Restricted, and Perishable Mail</i>
SAM	= Space Available Mail
USDA	= United States Department of Agriculture

Note: Mail order catalogs are prohibited as SAM or PAL mail.

A. Securities, currency, or precious metals, including in their raw, unmanufactured state, are prohibited. Official Mail shipments are exempt from this restriction.

A1. Reserved for future use.

A2. Reserved for future use.

B. Other than for PMEMS and the exceptions listed below, a customs declaration PS Form 2976 or PS Form 2976-A is required for all items weighing 16 ounces or more, and for all items (regardless of weight) containing potentially dutiable mail contents (e.g., merchandise or goods) addressed to or from this ZIP Code. Other than the exceptions listed below, all PMEMS mailpieces (regardless of mail contents or weight) addressed to or from this ZIP Code must bear a properly completed PS Form 2976-B. The surface area of the address side of the mailpiece must be large enough to contain the applicable customs declaration. The following exceptions apply to known mailers, who for this purpose are defined as follows:

- Business mailers who enter volume mailings through business mail entry units or other bulk mail acceptance locations, pay postage through advance deposit accounts, use permit imprints for postage payment, and submit completed postage statements at the time of entry that certify that the mailpieces contain no dangerous materials that are prohibited by postal regulations. Such business mailers are exempt from providing customs documentation on non-dutiable letters and printed matter.
- All federal, state, and local government agencies whose mailings are regarded as "Official Mail." Such agencies are exempt from providing customs documentation, except for any items addressed to an MPO or DPO to which restriction "B2" applies.

B2. All federal, state, and local government agencies must complete customs documentation when sending potentially dutiable mail addressed to or from this MPO or DPO.

C. Cigarettes and other tobacco products, including tobacco leaves, chewing and pipe tobacco, snuff, and cigars are prohibited, including those that are authorized in Publication 52 under PACT.

C1. Obscene and horror articles, images, prints, paintings, cards, films, videotapes, comic books, etc., are prohibited.

C2. E-cigarettes and related products (e.g., nicotine liquids, e-liquids, parts, or supplies) are prohibited.

D. Coffee is prohibited.

E. Medicines (prescription, over-the-counter, vitamins, and supplements) are prohibited when mailed to individuals for human or animal use. This prohibition does not apply when medicines are sent as Official Mail only between specifically designated agencies such as pharmaceutical distributors, hospitals, clinics, and pharmacies.

E1. Mailers are responsible to ensure that all medicines and vaccines conform to host nation laws.

E2. Any matter depicting nude or seminude persons, pornographic, or sexual items are prohibited. Non-authorized political materials are prohibited. Religious materials contrary to the Islamic faith are prohibited in bulk quantities, but individual items for the personal use of the addressee are permissible.

E3. Radio transceivers, cordless/cellular telephones, global positioning systems, scanners, base stations, and handheld transmitters are prohibited.

F. Firearms of any type are prohibited, except firearms mailed to or by official U.S. government agencies. This restriction does not apply to firearms mailed from this MPO ZIP Code, provided ATF and USPS regulations are met. Antique firearms do not require an ATF form.

F1. Weapons of any type are prohibited.

F2. Mailing firearms to or from this MPO ZIP Code is restricted to one shotgun and one single shot .22 caliber rifle per individual.

F3. Replica weapons and inert explosive devices (such as grenades) and weapons parts are prohibited.

G. Parcels of any class are prohibited.

H. Meats, including preserved meats, bones, skin, hair, feathers, horns or hoofs of hoofed animals, and wool samples whether hermetically sealed or not, are prohibited.

H1. Pork or pork by-products are prohibited.

I. Reserved for future use.

I1. Reserved for future use.

I2. Reserved for future use.

I3. Mail of all classes must fit in a mail sack. Mail may not exceed the following dimensions:

- Maximum length 27 inches.
- Maximum width 14 inches.
- Maximum height 14 inches.

J. Standard Post and Parcel Select parcels may not exceed 108 inches in length and girth combined.

K. Reserved for future use.

L. All Official Mail is prohibited.

M. Fruits, vegetables, live animals, and live plants are prohibited.

N. Registered Mail service is prohibited.

O. Reserved for future use.

P. Official Mail only.

Q. Mail may not exceed 66 pounds, and size is limited to 42 inches maximum length and 72 inches maximum length and girth combined.

R. All alcoholic beverages, including those mailable under Publication 52, Part 421, are prohibited.

R1. Materials used in the production of alcoholic beverages (i.e., distilling material, hops, malts, yeast, etc.) are prohibited.

S. Synthetic cannabinoids used to stimulate the central nervous system commonly known as "synthetic marijuana," "K2," or "Spice" are prohibited.

T. Mailings of household shipments and case lots of food to or from an MPO require military transportation office approval prior to mailing. Mailings to or from a DPO require pre-approval from the Diplomatic Pouch and Mail Director.

U. Mail addressed to Retirees (Box R) is limited to 16 ounces and up to a 90-day supply of TRICARE medications. This restriction does not apply to mail endorsed "Free Matter for the Blind or Handicapped."

U1. Mail is limited to First-Class Mail items, including audio and video media, weighing 13 ounces or less. This limitation does not apply to Official Mail.

U2. Retirees (Box R) are not authorized mail service.

U3. Reserved for future use.

U4. Mail addressed to Box C is limited to 2 lbs.

V. PMEMS is not available.

V1. Electronic Delivery status information for Extra Services is not available on *USPS.com*. Manual record of delivery may be available upon request.

W. Hermetically sealed packages of meat products bearing USDA certification, such as dried beef, salami, and sausage, may be mailed. 200 grams of tobacco per parcel are permitted duty free.

X. Cremated remains are prohibited.

Y. Mail is limited to First-Class Mail and Priority Mail items only. This restriction also applies to Official Mail.

Z. No outside pieces (OSPs).

Z1. The following restriction is applicable only to International Service Centers (ISC)/Exchange Offices. An Anti-Pilferage Seal (Item No O817E or O818A) is required on all pouches and sacks.

— *International Network Operations,
Global Business, 10-8-20*

Freely Associated States Restrictions

We list the mailing restrictions for Freely Associated States (FAS) in the Pull-Out section of the *Postal Bulletin*. All FAS Restrictions will be updated periodically.

Freely Associated States

Mail addressed to freely associated states is subject to certain conditions or restrictions of mailing regarding content, preparation, and handling. The following FAS Restrictions table outlines these conditions as listed by each affected FAS ZIP Code™ through the use of footnoted mailing restrictions codes (see the [Restrictions](#) following the table). For more information on available extra services for FAS destinations, see *Mailing Standards of the United States Postal Service, Domestic Mail Manual (DMM®)*, part 503.

Acceptance clerks must use the table with the Retail System Software terminal to determine which FAS ZIP Codes are active and which conditions of mailing apply.

FAS Restrictions Table

FAS Table	See Restrictions
96939	A, B
96940	A, B
96941	A, B
96942	A, B
96943	A, B
96944	A, B
96960	A, B
96970	A, B, D
Marshall Islands	C
Federated States of Micronesia	C

RESTRICTIONS LEGEND

PS Form 2976, *Customs Declaration CN 22 – Sender's Declaration*

PS Form 2976-A, *Customs Declaration and Dispatch Note*

FAS = Freely Associated State

- A.** Bank currency (coin and paper) is prohibited.
- B.** Signature Confirmation, Signature Confirmation Restricted Delivery, Adult Signature Requested, Adult Signature Restricted Delivery, Certified Mail Adult Signature Required, and Certified Mail Adult Signature Restricted Delivery not available.
- C.** Collect on Delivery is prohibited.
- D.** Betel nut (Areca catechu) is prohibited.

— *Asia-Pacific Relations,
Global Business, 10-8-20*

Labeling List Changes (continued)

Column A Destination ZIP Codes	Column B Label Container To (Change From)	Column B Label Container To (Change To)
41339	GRAVEL SWITCH KY 40328	CAMPTON KY 41301
41352	GRAVEL SWITCH KY 40328	CAMPTON KY 41301
41408	GRAVEL SWITCH KY 40328	CAMPTON KY 41301
41425	GRAVEL SWITCH KY 40328	CAMPTON KY 41301
41465	GRAVEL SWITCH KY 40328	CAMPTON KY 41301
41472	GRAVEL SWITCH KY 40328	CAMPTON KY 41301
99501	ANCHORAGE AK 99501	ANCHORAGE AK 99514
99503	ANCHORAGE AK 99503	ANCHORAGE AK 99507
99504	ANCHORAGE AK 99501	ANCHORAGE AK 99514
99507	ANCHORAGE AK 99503	ANCHORAGE AK 99507
99508	ANCHORAGE AK 99501	ANCHORAGE AK 99514
99509	ANCHORAGE AK 99503	ANCHORAGE AK 99507
99510	ANCHORAGE AK 99501	ANCHORAGE AK 99514
99513	ANCHORAGE AK 99501	ANCHORAGE AK 99514
99514	ANCHORAGE AK 99501	ANCHORAGE AK 99514
99517	ANCHORAGE AK 99503	ANCHORAGE AK 99507
99520	ANCHORAGE AK 99501	ANCHORAGE AK 99514
99521	ANCHORAGE AK 99501	ANCHORAGE AK 99514
99523	ANCHORAGE AK 99503	ANCHORAGE AK 99507
99524	ANCHORAGE AK 99503	ANCHORAGE AK 99507
99623	WASILLA AK 99654	WASILLA AK 99623
99629	WASILLA AK 99654	WASILLA AK 99623
99652	WASILLA AK 99654	WASILLA AK 99623
99654	WASILLA AK 99654	WASILLA AK 99623
99676	WASILLA AK 99654	WASILLA AK 99623
99687	WASILLA AK 99654	WASILLA AK 99623
99688	WASILLA AK 99654	WASILLA AK 99623
99701	FAIRBANKS AK 99701	FORT WAINWRIGHT AK 99703
99702	FAIRBANKS AK 99701	FORT WAINWRIGHT AK 99703
99703	FAIRBANKS AK 99701	FORT WAINWRIGHT AK 99703
99705	FAIRBANKS AK 99701	FORT WAINWRIGHT AK 99703
99706	FAIRBANKS AK 99701	FORT WAINWRIGHT AK 99703
99707	FAIRBANKS AK 99701	FORT WAINWRIGHT AK 99703
99708	FAIRBANKS AK 99701	FORT WAINWRIGHT AK 99703
99709	FAIRBANKS AK 99701	FORT WAINWRIGHT AK 99703
99712	FAIRBANKS AK 99701	FORT WAINWRIGHT AK 99703
99737	FAIRBANKS AK 99701	FORT WAINWRIGHT AK 99703
99780	FAIRBANKS AK 99701	FORT WAINWRIGHT AK 99703

Newly Added

Column A Destination ZIP Codes	Column B Label Container To (Added To)
16313	WARREN PA 16365
16345	WARREN PA 16365
16347	WARREN PA 16365
16350	WARREN PA 16365
16360	TITUSVILLE PA 16354
16405	ALBION PA 16401
16411	GIRARD PA 16417
16436	ALBION PA 16401
16443	GIRARD PA 16417
40316	WINCHESTER KY 40391
40334	WINCHESTER KY 40391
40346	WINCHESTER KY 40391
40350	HARRODSBURG KY 40330
40376	WINCHESTER KY 40391
40387	WINCHESTER KY 40391
40404	RICHMOND KY 40475

Deleted

Column A Destination ZIP Codes	Column B Label Container To (Deleted From)
32072	OLUSTEE FL 32072
40328	GRAVEL SWITCH KY 40328
40422	DANVILLE KY 40422
40423	DANVILLE KY 40422
40437	GRAVEL SWITCH KY 40328
40440	GRAVEL SWITCH KY 40328
40442	GRAVEL SWITCH KY 40328
40464	GRAVEL SWITCH KY 40328
40468	GRAVEL SWITCH KY 40328
40489	GRAVEL SWITCH KY 40328
83616	EAGLE ID 83616
83617	EAGLE ID 83616
83619	WEISER ID 83672
83634	NAMPA ID 83687
83638	MCCALL ID 83638
83644	EAGLE ID 83616
83647	MCCALL ID 83638
83648	MCCALL ID 83638
83653	NAMPA ID 83687
83660	WEISER ID 83672
83661	WEISER ID 83672
83669	WEISER ID 83672
83672	WEISER ID 83672
83687	NAMPA ID 83687

* * * * *

L606 5-Digit Scheme — Standard Mail, First-Class Mail, and Package Services Parcels
Changes

Column A Destination ZIP Codes	Column B Label Container To (Change From)	Column B Label Container To (Change To)
23702	PORTSMOUTH VA 23707	PORTSMOUTH VA 23701

Newly Added

Column A Destination ZIP Codes	Column B Label Container To (Added To)
23701	PORTSMOUTH VA 23701
23705	PORTSMOUTH VA 23707
23708	PORTSMOUTH VA 23708
23709	PORTSMOUTH VA 23708
33570	APOLLO BEACH FL 33572
33571	SUN CITY CENTER FL 33571
33572	APOLLO BEACH FL 33572
33573	SUN CITY CENTER FL 33571
33575	APOLLO BEACH FL 33572

Deleted

Column A Destination ZIP Codes	Column B Label Container To (Deleted From)
20601	WALDORF MD 20601
20602	WALDORF MD 20601
20603	WALDORF MD 20601
23075	RICHMOND VA 23231
23231	RICHMOND VA 23231
23250	RICHMOND VA 23231
32395	TALLAHASSEE FL 32399
32399	TALLAHASSEE FL 32399
80018	AURORA CO 80018
80019	AURORA CO 80018

L607 3-Digit ZIP Code Sort Option for Drop-Ship Mailers

* * * * *

Deleted

Column A Destination ZIP Codes	Column B Label To (Deleted From)
32026	JACKSONVILLE FL 320
32395	TALLAHASSEE FL 323

— Logistics, Network Development, and Support,
Network Operations, 10-8-20

Finance

Federal Income Tax Withholding

The 2017 Tax Cuts and Jobs Act made major revisions that affected taxpayer withholding. Due to changes in the law, personal exemptions are no longer a central feature of the tax code. The Internal Revenue Service updated Form W-4, *Employee's Withholding Allowance Certificate*, to reflect these changes. Employees who have submitted Form W-4 in any year before 2020 are not required to complete a new form, and USPS® will continue to compute withholding based on information from the employee's most recently submitted Form W-4.

For employees who do submit a revised Form W-4 in 2020, withholding will be based on expected filing status and standard deduction for the year. Employees can also choose to have qualified children and other dependents, multiple jobs or spouse works, and other income and deductions reflected in their withholding.

Contributions made by employees to the following programs continue to be treated as pretax monies for federal tax computations:

- Commuter Program (CPP) up to the transit/parking pretax limits.
- Federal Employees Dental and Vision Insurance Program (FEDVIP).
- Health Benefits (HB):
 - Federal Employees Health Benefits (FEHB), unless the employee declined the pre-tax benefit.
 - USPS Health Benefits (USPS HB), only if the employee opted for pretax contributions.
- Flexible Spending Accounts (FSA).
- Health Savings Account (HSA).
- Traditional Thrift Savings Plan (TSP).

Regardless of whether employees have completed a revised 2020 Form W-4, it is recommended that they visit [irs.gov](https://www.irs.gov) and complete a "paycheck checkup" using the Tax Withholding Estimator (see [irs.gov/individuals/tax-withholding-estimator](https://www.irs.gov/individuals/tax-withholding-estimator)).

— Payroll,
Controller, 10-8-20

Human Resources

Penalty Overtime Exclusion

As referenced in Article 8, sections 4 and 5, of the USPS-NALC and USPS-APWU national agreements, the December period (during which penalty overtime regulations are not applicable) consists of 4 consecutive service weeks.

This year, the December period begins Pay Period 25-20, Week 2 (November 28, 2020) and ends Pay Period 01-21, Week 1 (December 25, 2020).

— Labor Relations Policies and Programs,
Labor Relations, 10-8-20

Mailing and Shipping Services

Mail Alert

The mailings below will be deposited in the near future. Offices must process this mail according to applicable service standards with the in-home dates in mind. Mailers wishing to participate in these alerts, for mailings of 1 mil-

lion pieces or more, must contact Business Service Network Integration at 202-268-3258 at least 1 month before the requested delivery dates.

Requested Delivery Dates	Title of Mailing	Class and Type of Mail	Number of Pieces (Millions)	Distribution	Presort Level	Comments
10/19/20-10/22/20	Seventh Avenue	Standard Catalog	1.0	Nationwide	3/5 Digit	Quad Graphics

— *Business Customer Support and Services, Sales and Customer Relations, 10-8-20*

Safety and Health

USPS National Slip, Trip and Fall Prevention Week, October 17 – 23, 2020

Hazards such as neglected icy surfaces or pallets placed in walkways can pose a serious threat to Postal Service™ employees. Last year, the United States Postal Service® reported that 17,534 Postal Service employees were victims of a slip, trip, or fall.

To bring awareness to this issue, USPS® is sponsoring National Slip, Trip and Fall Prevention Week, a public service campaign that offers safety tips and emphasizes the impact that slip, trip and fall incidents have on employees, customers, and the organization. This year's theme is "Safety: Every STEP of the Way."

Slip, Trip, and Fall Prevention

Last year, most slip, trip and fall incidents involved mail carriers. Almost half resulted in at least one day away from work. The following tips can help prevent these incidents:

- Wear proper footwear. Choose high-traction, slip-resistant footwear.

- Stay away from wet leaves, slippery surfaces, or icy areas whenever possible. Shorten your steps and shuffle your feet when near slippery surfaces.
- Be alert. On the work room floor or out on the route, things change quickly. Always remain focused, alert, and ready to react to the conditions in front of you.
- Where available, use handrails or other stable supports. Holding on to something keeps you steady when ascending and descending stairs or entering and exiting vehicles. Keep one hand on the handrail or grab bar, so you can catch yourself if you start to slip.
- Report hazards. Be diligent about examining your path and work area for hazards. Use PS Form 1767, *Report of Hazard, Unsafe Condition or Practice*, to report a hazard to your supervisor.

For more information and resources about safety, visit blue.usps.gov/hr/safety/safety.htm.

— *Occupational Safety and Health, Employee Resource Management, 10-8-20*

Stamp Services

Pictorial Postmarks Announcement

As a community service, the Postal Service™ offers pictorial postmarks to commemorate local events celebrated in communities throughout the nation. A list of events for which pictorial postmarks are authorized appears on the following pages. The sponsor of the pictorial postmark appears in italics under the date. Also provided are illustrations of these postmarks.

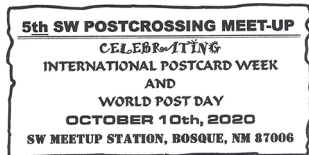
People attending these local events may obtain the postmark in person at the temporary Post Office™ station established there. Those who cannot attend the event but who wish to obtain the postmark may submit a mail order request. Pictorial postmarks are available only for the dates indicated, and *requests must be postmarked no later than 30 days following the requested pictorial postmark date.*

All requests must include a stamped envelope or postcard bearing at least the minimum First-Class Mail® postage. Items submitted for postmark may not include

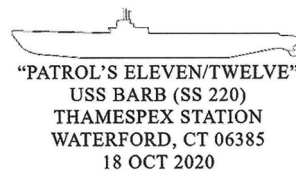
postage issued after the date of the requested postmark. Such items will be returned unserved.

Customers wishing to obtain a postmark must affix stamps to any envelope or postcard of their choice, address the envelope or postcard to themselves or others, insert a card of postcard thickness in envelopes for sturdiness, and tuck in the flap. Place the envelope or postcard in a larger envelope and address it to: Pictorial Postmarks, followed by the Name of the Station, Address, City, State, ZIP+4® Code, as listed next to the postmark.

Customers can also send stamped envelopes and postcards without addresses for postmark, as long as they supply a larger envelope with adequate postage and their return address. After applying the pictorial postmark, the Postal Service returns the items (with or without addresses) under addressed protective cover.



October 10, 2020
San Quito Padilla
 SW Meetup Station
 Postmaster
 1351 Highway 304
 Veguita, NM 87062-9998



October 18, 2020
Thames Stamp Club
 THAMESPEX Station
 Postmaster
 222 Boston Post Road
 Waterford, CT 06385-9998

— Stamp Services,
 Marketing, 10-8-20

How to Order the First-Day-of-Issue Digital Color or Traditional Postmarks

Customers have 120 days to obtain the first-day-of-issue postmarks by mail. Each cover must have sufficient postage to meet First-Class Mail® requirements. Customers may purchase new stamps at their local Post Office™, by phone at 800-782-6724, or on The Postal Store® website at usps.com/shop.

Digital Color Postmarks

Only select stamp issues offer a digital color postmark. Customers may submit #6 or #10 envelopes constructed of paper rated as “laser safe.” The Postal Service™ recommends envelopes of 80-pound Accent Opaque, acid-free, 9/16-inch side seams with no glue on the flap. The maximum size of all digital color postmarks is 2 inches (vertically) by 4 inches (horizontally). Allow sufficient space on the envelope to accommodate the postmark. Do not use self-adhesive labels for addresses on the envelope. Two test envelopes must be included. There is a minimum of 10 envelopes at 50 cents per postmark required at the time of servicing. Customers must submit a check, money order, or credit card for payment.

The Postal Service reserves the right to not accept hand-painted and other cachet envelopes that are not compatible with our digital color postmark equipment. The Postal Service also reserves the right to substitute traditional black rubber postmarks if use of nonspecified envelopes results in poor image quality or damage to equipment.

Customers must affix the stamps to the envelopes and address them to themselves or others for return through the mail. Or, they may include an additional self-addressed return envelope, large enough to accommodate their canceled items, with sufficient postage affixed for return of

their postmarked items. Address customer requests for digital color postmarks to:

FDOI – (Name of Stamp Issue)
USPS Stamp Fulfillment Services
8300 NE Underground Drive, Suite 300
Kansas City, MO 64144-9900

After applying the first-day-of-issue postmark, the Postal Service will return the envelopes to the customer by U.S. Mail®.

Traditional Postmarks

Customers must affix the stamps to the envelopes and address them to themselves or others for return through the mail. Or, they may include an additional self-addressed return envelope, large enough to accommodate their canceled items, with sufficient postage affixed for return of their postmarked items. Address customer requests for traditional postmarks to:

FDOI – (Name of Stamp Issue)
USPS Stamp Fulfillment Services
8300 NE Underground Drive, Suite 300
Kansas City, MO 64144-9900

After applying the first-day-of-issue postmark, the Postal Service will return the envelopes to the customer by U.S. Mail™. There is no charge for the first 50 postmarks. There is a 5-cent charge for each additional postmark over 50. Customers must submit a check, money order, or credit card for payment.

Locally produced items are not authorized. Only merchandise that has been approved and assigned an item number by Headquarters Retail Marketing may be produced and sold.



Digital Color Pictorial

FDOI – Enjoy the Great Outdoors Stamps

USPS Stamp Fulfillment Services
8300 NE Underground Drive, Suite 300
Kansas City, MO 64144-9900

October 13, 2020



Black and White Pictorial

FDOI – Enjoy the Great Outdoors Stamps

USPS Stamp Fulfillment Services
8300 NE Underground Drive, Suite 300
Kansas City, MO 64144-9900

October 13, 2020



FDOI – Hip Hop Stamps

USPS Stamp Fulfillment Services
8300 NE Underground Drive, Suite 300
Kansas City, MO 64144-9900

November 1, 2020

Digital Color Pictorial



FDOI – Hip Hop Stamps

USPS Stamp Fulfillment Services
8300 NE Underground Drive, Suite 300
Kansas City, MO 64144-9900

November 1, 2020

Black and White Pictorial



FDOI – Fruits & Vegetables Stamps

USPS Stamp Fulfillment Services
8300 NE Underground Drive, Suite 300
Kansas City, MO 64144-9900

November 17, 2020

Digital Color Pictorial

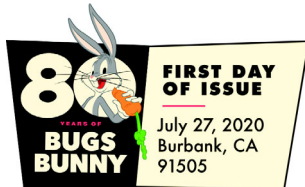


FDOI – Fruits & Vegetables Stamps

USPS Stamp Fulfillment Services
8300 NE Underground Drive, Suite 300
Kansas City, MO 64144-9900

November 17, 2020

Black and White Pictorial

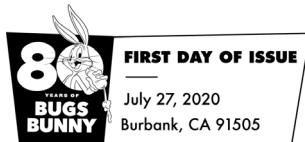


FDOI – Bugs Bunny Stamps

USPS Stamp Fulfillment Services
8300 NE Underground Drive, Suite 300
Kansas City, MO 64144-9900

November 27, 2020

Digital Color Pictorial



FDOI – Bugs Bunny Stamps

USPS Stamp Fulfillment Services
8300 NE Underground Drive, Suite 300
Kansas City, MO 64144-9900

November 27, 2020

Black and White Pictorial



FDOI – Ruth Asawa Stamps

USPS Stamp Fulfillment Services
8300 NE Underground Drive, Suite 300
Kansas City, MO 64144-9900

December 13, 2020

Digital Color Pictorial

**FDOI – Ruth Asawa Stamps**

USPS Stamp Fulfillment Services
8300 NE Underground Drive, Suite 300
Kansas City, MO 64144-9900

December 13, 2020

Black and White Pictorial**Digital Color Pictorial****FDOI – Innovation Stamps**

USPS Stamp Fulfillment Services
8300 NE Underground Drive, Suite 300
Kansas City, MO 64144-9900

December 20, 2020

**Black and White Pictorial****FDOI – Innovation Stamps**

USPS Stamp Fulfillment Services
8300 NE Underground Drive, Suite 300
Kansas City, MO 64144-9900

December 20, 2020

**Digital Color Pictorial****FDOI – Thank You Stamps**

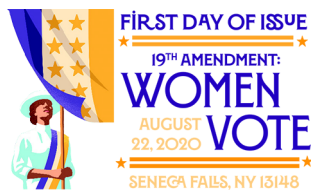
USPS Stamp Fulfillment Services
8300 NE Underground Drive, Suite 300
Kansas City, MO 64144-9900

December 21, 2020

**Black and White Pictorial****FDOI – Thank You Stamps**

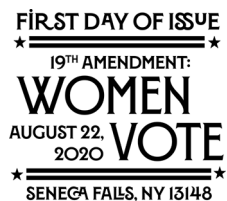
USPS Stamp Fulfillment Services
8300 NE Underground Drive, Suite 300
Kansas City, MO 64144-9900

December 21, 2020

**Digital Color Pictorial****FDOI – 19th Amendment: Women Vote Stamp**

USPS Stamp Fulfillment Services
8300 NE Underground Drive, Suite 300
Kansas City, MO 64144-9900

December 22, 2020

**Black and White Pictorial****FDOI – 19th Amendment: Women Vote Stamp**

USPS Stamp Fulfillment Services
8300 NE Underground Drive, Suite 300
Kansas City, MO 64144-9900

December 22, 2020



FDI – Mayflower in Plymouth Harbor Stamp

USPS Stamp Fulfillment Services January 17, 2021
 8300 NE Underground Drive, Suite 300
 Kansas City, MO 64144-9900

Digital Color Pictorial



FDI – Mayflower in Plymouth Harbor Stamp

USPS Stamp Fulfillment Services January 17, 2021
 8300 NE Underground Drive, Suite 300
 Kansas City, MO 64144-9900

Black and White Pictorial



FDI – Holiday Delights Stamps

USPS Stamp Fulfillment Services January 24, 2021
 8300 NE Underground Drive, Suite 300
 Kansas City, MO 64144-9900

Digital Color Pictorial



FDI – Holiday Delights Stamps

USPS Stamp Fulfillment Services January 24, 2021
 8300 NE Underground Drive, Suite 300
 Kansas City, MO 64144-9900

Black and White Pictorial



FDI – Hanukkah Stamp

USPS Stamp Fulfillment Services February 6, 2021
 8300 NE Underground Drive, Suite 300
 Kansas City, MO 64144-9900

Digital Color Pictorial



FDI – Hanukkah Stamp

USPS Stamp Fulfillment Services February 6, 2021
 8300 NE Underground Drive, Suite 300
 Kansas City, MO 64144-9900

Black and White Pictorial



FDI – Kwanzaa Stamp

USPS Stamp Fulfillment Services February 13, 2021
 8300 NE Underground Drive, Suite 300
 Kansas City, MO 64144-9900

Digital Color Pictorial



Black and White Pictorial

FDI – Kwanzaa Stamp

USPS Stamp Fulfillment Services
8300 NE Underground Drive, Suite 300
Kansas City, MO 64144-9900

February 13, 2021



Digital Color Pictorial

FDI – Winter Scenes Stamps

USPS Stamp Fulfillment Services
8300 NE Underground Drive, Suite 300
Kansas City, MO 64144-9900

February 16, 2021



Black and White Pictorial

FDI – Winter Scenes Stamps

USPS Stamp Fulfillment Services
8300 NE Underground Drive, Suite 300
Kansas City, MO 64144-9900

February 16, 2021



Digital Color Pictorial

FDI – Our Lady of Guápulo Stamp

USPS Stamp Fulfillment Services
8300 NE Underground Drive, Suite 300
Kansas City, MO 64144-9900

February 20, 2021



Black and White Pictorial

FDI – Our Lady of Guápulo Stamp

USPS Stamp Fulfillment Services
8300 NE Underground Drive, Suite 300
Kansas City, MO 64144-9900

February 20, 2021

Sustainability

Reporting Releases of Hazardous and Regulated Substances to the Environment

The United States Postal Service® must report hazardous and regulated material releases into the environment to the U.S. Environmental Protection Agency, and state or local agencies. Additionally, Postal Service™ policy requires completion of PS Form 8187, *Hazardous and Regulated Substance Release Notification*, to internally report the release of these materials.

In general, spills must be reported if they reach:

- Stormwater,
- Sanitary sewer drains,
- Waterways,
- Soil,
- Groundwater, or
- Surface water.

The table shown here lists common reportable materials for Postal Service sites, which may trigger reporting requirements depending on the quantity released into the environment.

Examples of Reportable Hazardous and Regulated Materials

Oil		
Motor oil	Heating oi	Grease (including cafeteria grease)
Gasoline	Used oil	Diesel fuel
Kerosene	Hydraulic fluid	Brake fluid
Mineral spirits	Transmission fluid	Gear oil
		Petroleum Naphtha
Chemicals		
Sulfuric acid	Propylene glycol	Polychlorinated Biphenyls (PCBs)
Friable asbestos	Lead	Soaps/Detergents
Mercury	CFC-12 (R-12 Refrigerant)	Floor wax
Mineral spirits	De-Icing Products (e.g., calcium chloride, sodium chloride, calcium magnesium acetate)	Water treatment chemicals
Ethylene glycol (Antifreeze)	Diesel exhaust fluid (DEF)	Windshield washer fluid

As soon as any Postal Service employee knows a release to the environment has occurred, he or she must immediately contact the site installation head. The site installation head, or his or her designee, must do the following:

- Immediately report releases to the environment to the appropriate regional manager, Environmental Compliance and Sustainability, and the safety specialist (see blue.usps.gov/sustainability/contact.htm).
- Notify the appropriate federal, state, and local environmental agencies. Initial telephone notification and follow-up written reporting may be required. The applicable reporting requirements vary depending on location, and the type and quantity of the material released.
- Complete and submit PS Form 8187, *Hazardous and Regulated Substance Release Notification*.

For more information on this topic and other compliance requirements, check out the following resources:

- The Sustainability/Environmental Compliance site: blue.usps.gov/sustainability/environmental.htm.
- The Standard Operating Procedure for Reporting Releases to the Environment and a spill reporting requirements table that outlines regulatory thresholds for each chemical: blue.usps.gov/sustainability/environmental/spills_and_regulatory_reporting.htm.
- Environmental points of contact, including regional managers and supporting environmental field specialists: blue.usps.gov/sustainability/contact.htm.

— Office of Sustainability,
Deputy Postmaster General, 10-8-20



475 L'ENFANT PLAZA SW
WASHINGTON DC 20260-5540

First-Class Mail
Postage & Fees Paid
USPS
Permit No. G-10



WOMEN VOTE
19th AMENDMENT
FOREVER USA

2020

USPS® Issues
Historic

19th
Amendment:
Women
Vote

Forever®
Stamps

On Sale
Nationwide:
August 22, 2020



The Postal Bulletin is printed on paper that contains
30% post-consumer waste. Please recycle.