

# postal|bulletin

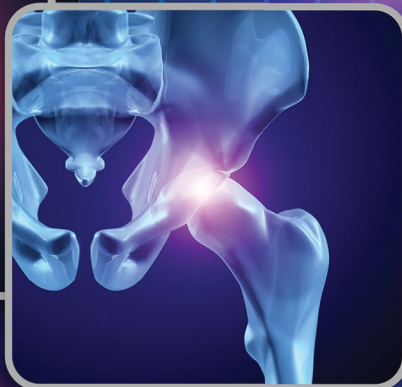
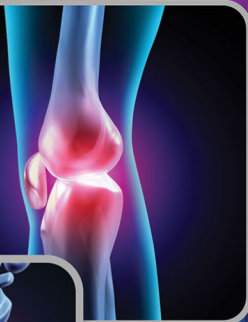
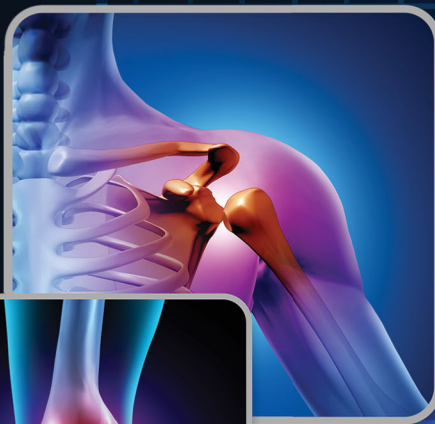
PUBLISHED SINCE MARCH 4, 1880

FEBRUARY is USPS ERGONOMICS AWARENESS MONTH

## Ergonomic Practices Prevent Injuries

**SAFETY  
DEPENDS  
ON ME!**

UNITED STATES  
POSTAL SERVICE



See page 3



**UNITED STATES  
POSTAL SERVICE®**

# Contents

## COVER STORY

February is Ergonomics Awareness Month: Ergonomic Practices Prevent Injuries . . . . .	3
--	---

## POLICIES, PROCEDURES, AND FORMS UPDATES

### Manuals

DMM Revision: Plus One Permanent Product. . . . .	5
ELM Revision: Ethics Advice . . . . .	6
ELM Revision: Promotion Increase, Position Upgrade, and Supervisory Differential Adjustment for Nonbargaining Unit Employees. . . . .	7
IMM Revision: Availability of Electronic USPS Delivery Confirmation International Service . . . . .	9

### Publications

Publication 431 Revision: Changes to Post Office Box Service and Caller Service Fee Groups . . . . .	9
--	---

### Forms

PS Form 5659 Revision: Daily Passport Application (DS-11) Transmittal . . . . .	10
---	----

## ORGANIZATION INFORMATION

### Finance

2021 Tax Information: Form W-2 Wage and Tax Statement; Form 1099 . . . . .	11
2022 Social Security and Medicare Tax Withholding Rates and Limits . . . . .	36
Form W-4 Completion for Employees Claiming Exempt Status for 2022 . . . . .	39
Maintain Updated Withholding Information in PostalEASE . . . . .	40

### Information Security

Cracking this Passphrase Could Take an Eternity. . . . .	40
--	----

## Stamp Services

Stamp Announcement 22-9: Title IX Stamps . . . . .	41
Pictorial Postmarks Announcement . . . . .	43
How to Order the First-Day-of-Issue Digital Color or Traditional Postmarks . . . . .	44

## PULL-OUT INFORMATION

### Fraud

Invalid USPS Corporate Account Numbers. . . . .	15
Missing, Lost, or Stolen U.S. Money Order Forms . . . . .	17
Missing, Lost, or Stolen Canadian Money Order Forms . . . . .	23
Verifying U.S. Postal Service Money Orders . . . . .	25
Counterfeit Canadian Money Order Forms . . . . .	25
Toll-Free Number Available to Verify Canadian Money Orders . . . . .	25

### Other Information

Overseas Military/Diplomatic Mail . . . . .	26
Thrift Savings Plan Fact Sheet. . . . .	32
Freely Associated States Restrictions. . . . .	34

## POSTAL BULLETIN 2021 ANNUAL INDEX

2021 Annual Index . . . . .	PB 22589 (1-13-22)
-----------------------------	--------------------

Find the latest in mail and delivery information and services offered by U.S. Postal® in the *Postal Bulletin* at [about.usps.com/postal-bulletin](https://about.usps.com/postal-bulletin)

**Mail Moment®**

# Cover Story

## February is Ergonomics Awareness Month: Ergonomic Practices Prevent Injuries

Ergonomic-related injuries, or musculoskeletal disorders (MSDs), make up approximately 30 percent of all recordable industrial accidents reported by Postal Service™ employees. MSDs are illnesses or injuries that affect one or more parts of the musculoskeletal system, which is the soft tissue and bone structure of the body. These injuries primarily involve the muscles, tendons, and ligaments that allow us to move and use our joints.

For Fiscal Year (FY) 2021, Ergonomics Awareness Month was a successful campaign that highlighted our ongoing efforts to reduce ergonomic hazards and MSDs. The Postal Service experienced an overall 7 percent reduction in MSDs over this time last year, which equates to 908 fewer employees reporting MSD injuries.

The Ergonomics Awareness Month Campaign for FY 2022 kicks off this February and will emphasize the need for actions on everyone's part to help reduce MSDs. Successful ergonomics is a multi-team effort involving Management, Labor, Safety, Human Resources, and Operational Excellence.

Ergonomics is simply "fitting the task to the person or making things user-friendly." Ergonomics looks at a task, sees how it is done, and evaluates how to provide a method that is a better fit to the worker and their capabilities. For example, a task requiring you to extend and reach could be modified by moving the object closer to you or by using a reach pole. Sometimes equipment or workstation changes can be used to make a task easier and reduce risk of injury. Other solutions may include change of methods, techniques, or job rotation to reduce the risk.

MSDs are "wear-and-tear" injuries that occur over time; they develop differently than sudden, traumatic injuries, such as cuts, bruises, or broken bones. MSDs can take weeks, months, or even years to develop. Risk factors include:

- **Awkward posture.** Any significantly bent or twisted body position that places additional stress on any part of the body or slows the flow of blood to that body part.
- **Force.** When excessive force is applied to perform a task, such as heavy lifting or pushing rolling stock full of mail. Even something as small as holding an object between the thumb and fingers in a pinch grip can add up to big force over time.

- **Repetitive motion.** When a joint or body part repeats the same motion several times. An example could be the number of lifts or the number of pinch grips performed per minute or simple actions, such as texting on a cell phone, keying on a laptop, or jogging.

For FY 2021, USPS® reported the following MSD injuries:

Injury Location	Number of MSD Injuries	Percentage of MSD Injuries
Back/Chest	3797	29.5
Shoulder	3171	24.6
Hand	2017	16.7
Foot/Ankle	884	6.9
Knees	737	5.7
Arm	560	4.3
Head/Neck	504	3.9
Hip	423	3.3
Abdomen	253	2.0
Body System	27	0.2

By following the safety policies and procedures established in your facility and using good ergonomic methods for every activity, you will help prevent wear-and-tear injuries.

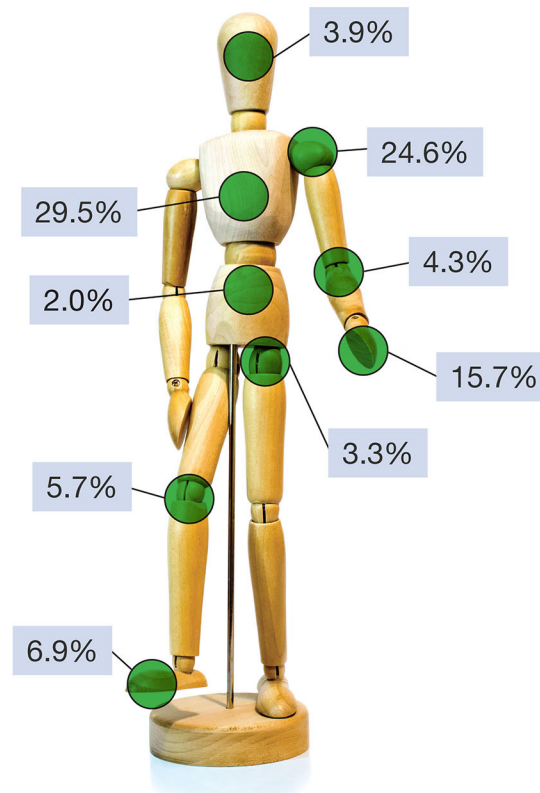
For more information about ergonomics, check out the following resources:

- Ergonomic Safety talks module in the HERO system under "My Learning."
- For a printable version of the Ergonomics poster on page 4, look under "Resources" at <https://blue.usps.gov/hr/safety/ergonomics.htm>.
- Safety Depends on Me videos: [blue.usps.gov/corp-comm/uspstv/safety-and-health](https://blue.usps.gov/corp-comm/uspstv/safety-and-health).
- A-Z Safety Topics on Blue: [blue.usps.gov/hr/safety/a-z-safety-toolkit.htm](https://blue.usps.gov/hr/safety/a-z-safety-toolkit.htm).
- Wellness videos: [liteblue.usps.gov/humanresources/benefits/health-wellness/wellness-videos.shtml](https://liteblue.usps.gov/humanresources/benefits/health-wellness/wellness-videos.shtml).
- Occupational Safety and Health Administration (OSHA): [osha.gov/ergonomics](https://osha.gov/ergonomics).
- Centers for Disease Control (CDC): [cdc.gov/niosh/topics/ergonomics](https://cdc.gov/niosh/topics/ergonomics).
- National Safety Council: [nsc.org/hidden-pages/member-newsletters/usps-safety-spotlight?utm\\_source=sfmc&utm\\_medium=email&utm\\_campaign=MBRDeliveringSafety012021&utm\\_content=#Know](https://nsc.org/hidden-pages/member-newsletters/usps-safety-spotlight?utm_source=sfmc&utm_medium=email&utm_campaign=MBRDeliveringSafety012021&utm_content=#Know).

— Occupational Safety and Health,  
Human Resources, 1-27-22

## Ergonomics Poster

## Ergonomics Affects the Whole Body - Head, Shoulders, Knees and Toes



### Musculoskeletal Disorders (MSDs)

Injury Location	# MSD Injuries	% of MSD Injuries
Back/Chest	3797	29.5%
Shoulder	3171	24.6%
Hand	2017	15.7%
Foot/Ankle	884	6.9%
Knee	737	5.7%
Arm	560	4.3%
Head/Neck	504	3.9%
Hip	423	3.3%
Abdomen	253	2.0%



UNITED STATES  
POSTAL SERVICE

# Policies, Procedures, and Forms Updates

## Manuals

### DMM Revision: Plus One Permanent Product

Effective April 4, 2022, the Postal Service™ will revise *Mailing Standards of the United States Postal Service*, Domestic Mail Manual (DMM®), section 204.3.2.4 and part 602, to add Plus One as a new permanent product offering.

On November 10, 2021, the Postal Service filed a request to add Plus One as a new permanent product offering to USPS Marketing Mail® saturation letters as an optional feature. The Postal Service conducted a 2-year market test of Plus One, beginning September 2019.

On January 4, 2022, the Postal Regulatory Commission (PRC) favorably reviewed the addition of Plus One as a permanent Market Dominant product proposed by the Postal Service. The price became effective on January 9, 2022. Final product information is available under Docket No. MC2022-20 (Order No. 6081) on the PRC website at [prc.gov](https://www.prc.gov).

Plus One is an advertising card mailed as an add-on mailpiece with a USPS Marketing Mail letters marriage mail envelope. The host mailpiece must be mailed as a commercial automation USPS Marketing Mail saturation marriage mail letter, with a minimum of 90 percent of the mailing being saturation sorted. The remaining 10 percent must be USPS Marketing Mail high density or high density plus letters. All mailpieces must be entered at the destination sectional center facility, and the Plus One add-on card must be part of the same mailing as the host piece, addressed to the same delivery points.

Although the Postal Service will not publish these revisions in the DMM until April 4, 2022, the standards are effective immediately.

#### ***Mailing Standards of the United States Postal Service, Domestic Mail Manual (DMM)***

	*	*	*	*	*
<b>200</b>	<b>Commercial Mail Letters, Cards, Flats, and Parcels</b>				
	*	*	*	*	*
<b>204</b>	<b>Barcode Standards</b>				
	*	*	*	*	*

#### **3.0 Standards for Barcoded Tray Labels, Sack Labels, and Container Labels**

\* \* \* \* \*

#### **3.2 Specifications for Barcoded Tray and Sack Labels**

\* \* \* \* \*

#### **3.2.4 3-Digit Content Identifier Numbers**

\* \* \* \* \*

#### **Exhibit 3.2.4 3-Digit Content Identifier Numbers**

CLASS AND MAILING	CIN	HUMAN-READABLE CONTENT LINE
* *	*	* *
<b>USPS MARKETING MAIL</b>		
* *	*	* *

#### ***ECR Letters – Barcoded***

*[Revise entry “saturation price” in Exhibit 3.2.4 to read as follows:]*

saturation price  
(including Plus One)      557      MKT LTR BC WSS<sup>1</sup>

*[Revise entry “high density or high density plus price” in Exhibit 3.2.4 to read as follows:]*

high density or high  
density plus price  
(including Plus One)      557      MKT LTR BC WSS<sup>1</sup>

\* \* \* \* \*

#### **600 Basic Standards for All Mailing Services**

\* \* \* \* \*

#### **602 Addressing**

\* \* \* \* \*

*[Add section 11.0 to read as follows:]*

#### **11.0 Commercial Plus One Mailpieces**

##### **11.1 Definition**

The commercial mail Plus One product is a bundled offering, including a host mailpiece and a Plus One card. Both the host mailpiece and the Plus One card must meet the



applicable basic standards of a USPS Marketing Mail saturation letter as specified in 245.6.0, be entered at a destination sectional center facility, and meet automation standards with a correct mailing address and Intelligent Mail barcode. The Plus One mailpiece (card) must meet the following additional standards:

- a. Be used for at least 6 months by the host mailer.
- b. Be addressed to the same delivery points as the host mailpiece.
- c. Be sorted and presented separately from the host piece.
- d. Must not exceed 6 inches long by 9.5 inches high.
- e. Must be at least 0.009 inches thick and card stock.
- f. Must have "Plus One" marking directly below Permit indicia.

### 11.2 Mail Preparation

Each Plus One mailing must be trayed and labeled according to 245.6.7. Palletized mailings must be prepared according to 705.8.10.3.

### 11.3 Documentation

When requested by USPS, Plus One mailpiece mailers must provide standardized documentation according to 203.3.0 to establish that the applicable distribution standards are met. Spoilage of host pieces may affect eligibility to mail Plus One pieces. Host pieces must meet the following:

- a. Documentation must show that at least 90 percent of host pieces are saturation mail. The remainder may be high density or high density plus.
- b. The total number of Plus One pieces must be less than or equal to the number of host pieces.

### 11.4 Extra Services

Items mailed with Plus One mailpieces may not be combined with any extra service.

\* \* \* \*

The Postal Service will incorporate these revisions into the April 4, 2022, edition of the online DMM, which is available via Postal Explorer® at [pe.usps.com](https://pe.usps.com).

— Product Classification,  
Product Solutions, 1-27-22

## ELM Revision: Ethics Advice

Effective March 31, 2022, the Postal Service™ will revise the *Employee and Labor Relations Manual* (ELM), section 662.11, to clarify the standard related to ethics advice for applying ethics regulations to particular situations.

This revision reflects that in investigations of, or actions against, Postal Service employees in their individual capacity, employees may not assert the attorney-client privilege to prevent disclosure of their communications with agency ethics officials and attorneys. This revision also reflects that the Postal Service may assert any privileges available in response to lawsuits and Freedom of Information Act requests to protect from disclosure certain communications between agency ethics attorneys and employees in response to external requests for information or news media inquiries.

Although the Postal Service will not publish this revision in the ELM until March 31, 2022, this standard is effective immediately.

### *Employee and Labor Relations Manual* (ELM)

\* \* \* \*

### 6 Employee Relations

\* \* \* \*

### 660 Conduct

\* \* \* \*

### 662 Federal Standards of Ethical Conduct

\* \* \* \*

#### 662.11 Ethics Advice

*[Revise the text of 662.11 to read as follows:]*

Employees who have questions about the application of the ethics regulations to particular situations should seek advice from an agency ethics official. Disciplinary action for violating these regulations will not be taken against an employee who has engaged in conduct in good faith reliance upon the advice of an agency ethics official, provided that the employee has made full disclosure of all relevant circumstances in seeking such advice. In any investigations of, or actions against, employees in their individual capacities, employees are not protected by the attorney-client privilege and may not assert in that context that such privilege prevents disclosure of their communications made to agency ethics officials or attorneys. An agency ethics official is required by 28 U.S.C. 535 to report any information he or she receives relating to a violation of the criminal code (Title 18 U.S.C.).

However, the Postal Service may still assert the attorney-client privilege and other privileges available in the civil litigation context, and/or Freedom of Information Act (FOIA) exemptions, to protect from public disclosure information provided to an agency ethics attorney from an employee, ethics advice provided from an agency ethics attorney to an employee, and any related documents, in response to FOIA requests, news media inquiries, and other external requests for information (except when disclosure is required by law).

\* \* \* \* \*

The Postal Service will incorporate this revision into the next edition of the online ELM, which is available on the PolicyNet website:

- Go to [blue.usps.gov](https://blue.usps.gov).
- In the left-hand column, click *Essential Links*, and then click *PolicyNet*.
- Go to the right-hand side under “Published Forms and Directives.”
- Click *Manuals*.

The direct URL for the Postal Service PolicyNet website is [blue.usps.gov/cpim](https://blue.usps.gov/cpim).

— Ethics and Legal Compliance,  
Law Department, 1-27-22

## ELM Revision: Promotion Increase, Position Upgrade, and Supervisory Differential Adjustment for Nonbargaining Unit Employees

Effective March 31, 2022, the Postal Service™ will revise the *Employee and Labor Relations Manual* (ELM), parts 412 and 413, to modify pay policies and schedules as noted below for nonbargaining unit employees:

- In Exhibit 412.12b, two new position groups will be added for the Supervisory Differential Adjustment Rate: Customer Services and Mailing Services.
- Under Factor #1 in section 413.21a., the minimum promotion increase will rise to 4 percent if the employee’s current salary is less than 10 percent from the maximum of the new grade.
- In section 413.3, the basic salary increase will be modified for position upgrades when an employee’s position is upgraded through the Workload Credit or job evaluation process.

Additionally, the Postal Service will revise section 411.31 for clarity and conciseness and update the name of the organization from Compensation and Benefits to Compensation Programs.

The modifications to parts 412 and 413 are the outcome of the pay consultation process with the National Association of Postal Supervisors (NAPS) and the United Postmasters and Managers of America (UPMA).

Although the Postal Service will not publish these revisions in the ELM until March 31, 2022, the standards are effective immediately.

### ***Employee and Labor Relations Manual (ELM)***

\* \* \* \* \*

#### **4 Pay Administration**

##### **410 Pay Administration Policy for Nonbargaining Unit Employees**

##### **411 General**

\* \* \* \* \*

##### **411.3 Responsibility**

##### **411.31 Assignment of Positions**

*[Revise the text of 411.31 to read as follows:]*

The chief Human Resources officer (CHRO) is responsible for determining the appropriate nonbargaining unit grade for each position covered by 410. Human Resources’ Compensation Programs unit determines salary ranges using market value research and consultations with the management associations.

\* \* \* \* \*

##### **412 New Appointment**

##### **412.1 Career Appointment**

\* \* \* \* \*

##### **412.12 New Career Appointment**

\* \* \* \* \*

**Exhibit 412.12b****Position Groups Eligible for Supervisory Differential Adjustment Rate**

*[Revise the text of Exhibit 412.12(b) to read as follows:]*

<b>Position Group</b>	<b>Minimum Salary Is 5 Percent Above</b>
Customer Services	RSC Q, step O
Mailing Services	PS-7, step O
Plant Maintenance	PS-10, step P
Postal Police	RSC Y, step 23
Vehicle Services	PS-8, step O
All Other Eligible EAS-15 to EAS-19	PS-6, step O

\* \* \* \* \*

**413 Promotion to Nonbargaining Unit Positions**

\* \* \* \* \*

**413.2 Promotion Increase****413.21 Nonbargaining Unit Employees**

\* \* \* \* \*

(1) Factor #1:

*[Revise the table of Factor #1 in 413.21(a) to read as follows:]*

<b>Award this percentage...</b>	<b>If the employee's current salary is...</b>
5 to 10	Greater than 20 percent from the maximum of the new grade.
4 to 8	10 to 20 percent from the maximum of the new grade.
4 to 5	Less than 10 percent from the maximum of the new grade.

\* \* \* \* \*

**413.3 Position Upgrade**

*[Revise the first sentence of 413.3 to read as follows:]*

When an employee's position is upgraded through the Workload Credit or job evaluation process, a 4 percent basic salary increase is provided.\*\*\*

\* \* \* \* \*

The Postal Service will incorporate these revisions into the next edition of the online ELM, which is available on the PolicyNet website:

- Go to [blue.usps.gov](https://blue.usps.gov).
- In the left-hand column, click *Essential Links*, and then click *PolicyNet*.
- Go to the right-hand side under "Published Forms and Directives."
- Click *Manuals*.

The direct URL for the Postal Service PolicyNet website is [blue.usps.gov/cpim](https://blue.usps.gov/cpim).

— Compensation Programs,  
Human Resources, 1-27-22



## IMM Revision: Availability of Electronic USPS Delivery Confirmation International Service

Effective February 6, 2022, the Postal Service™ will revise *Mailing Standards of the United States Postal Service*, International Mail Manual (IMM®), Exhibit 252.22, to reflect that Electronic USPS Delivery Confirmation International service (E-USPS DELCON INTL®) is available to Finland, Ireland, Sweden, and Switzerland (as of February 6, 2022).

### ***Mailing Standards of the United States Postal Service, International Mail Manual (IMM)***

	*	*	*	*	*
<b>2</b>	<b>Conditions for Mailing</b>				
	*	*	*	*	*
<b>250</b>	<b>First-Class Package International Service</b>				
	*	*	*	*	*
<b>252</b>	<b>Eligibility</b>				
	*	*	*	*	*

### **252.2 Electronic USPS Delivery Confirmation International Service (E-USPS DELCON INTL)**

\* \* \* \* \*

#### **252.22 Availability**

\* \* \* \* \*

#### **Exhibit 252.22**

#### **Countries Accepting Electronic USPS Delivery Confirmation International Service (E-USPS DELCON INTL)**

*[Revise the list by adding the following entries in alphabetical order: Finland, Ireland, Sweden, and Switzerland.]*

\* \* \* \* \*

Although effective February 6, 2022, the Postal Service will incorporate this revision into the next edition of the online IMM, which is available via Postal Explorer® at [pe.usps.com](https://pe.usps.com).

— Product Classification,  
Product Solutions, 1-27-22

## Publications

### Publication 431 Revision: Changes to Post Office Box Service and Caller Service Fee Groups

Effective January 27, 2022, Publication 431, *Post Office Box Service and Caller Service Fee Groups*, is revised to include the following changes.

#### **Publication 431, *Post Office Box Service and Caller Service Fee Groups***

\* \* \* \* \*

*[Delete the following entries:]*

ZIP Code	Fee Group
68834	5

\* \* \* \* \*

The online version of Publication 431 is dated July 2013. Publication 431 is currently available on the Postal Service™ PolicyNet website ([blue.usps.gov/cpim](https://blue.usps.gov/cpim)):

- Go to [blue.usps.gov](https://blue.usps.gov).
- In the left-hand column, click *Essential Links*, and then click *PolicyNet*.
- Go to the right-hand side under “Published Forms and Directives.”
- Click *Publications*.

Offices with WebBATS Manager/Supervisor access can view current Publication 431 information by going to the WebBATS Edit Facility Information page, as follows:

1. Go to the WebBATS main menu, and select Utility> Facility>Edit Facility option.
2. View the Fee Group field on the Edit Facility Information page.

— Post Office Operations,  
Retail and Post Office Operations, 1-27-22

## Forms

### PS Form 5659 Revision: Daily Passport Application (DS-11) Transmittal

Effective January 9, 2022, the Postal Service™ revised PS Form 5659, *Daily Passport Application (DS-11) Transmittal*, to reflect updated information regarding the fee for overnight service from the Department of State.

USPS® facilities can use the following information to order PS Form 5659 through eBuy+:

<b>PSIN:</b>	PS 5659
<b>PSN:</b>	7530-02-000-9490
<b>Unit of Measure:</b>	SH
<b>Minimum Order Quantity:</b>	100
<b>Maximum Order Quantity:</b>	2,000
<b>Quick Pick Number:</b>	333
<b>Price:</b>	\$0.0149 *
<b>Edition Date:</b>	1/22

\* The price is current as of this date and is subject to change. Any change in price will be reflected in eBuy+.

The January 2022 edition of PS Form 5659 (which replaces the December 2021 edition) is available on the PolicyNet website:

- Go to [blue.usps.gov](https://blue.usps.gov).
- In the left-hand column, click *Essential Links*, and then click *PolicyNet*.
- Go to the right-hand side under “Published Forms and Directives,” click *Forms*, and then click on the range 5000–5999.
- Scroll down to the form entry and click the PDF icon.

The direct URL for the Postal Service PolicyNet website is [blue.usps.gov/cpim](https://blue.usps.gov/cpim).

— Retail Operations,  
Retail and Post Office Operations, 1-27-22

# Organization Information

## Finance

### 2021 Tax Information: Form W-2 Wage and Tax Statement; Form 1099

#### General Form W-2 Information

If an employee has earnings from more than one state or locality, a separate Form W-2 (see pages [37](#) and [38](#)) will be issued for each.

The Postal Service™ will mail the 2021 Form W-2, *Wage and Tax Statement*, to all employees, except those employees who elected not to receive mailed copies of Forms W-2 (through the *PostalEASE* W-2 module) in lieu of official, electronic Forms W-2. The *PostalEASE* W-2 module makes online viewing and printing of Forms W-2 available to all employees for the last 7 years.

The format of the 2021 Form W-2 remains unchanged from the 2020 version.

An employee may be able to take the Earned Income Credit (EIC) for 2021, if he or she meets qualifying requirements. Details are printed in the “Notice to Employee” section of the Form W-2. An employee may also qualify for a state EIC credit. Employees must visit applicable state taxing authority websites to determine eligibility.

The Patient Protection and Affordable Care Act created the “Additional Medicare Tax” effective January 1, 2013. All wages and other compensation that are subject to regular Medicare tax in excess of \$200,000 are subject to an additional Medicare tax of 0.9 percent. All Medicare tax withheld is reported in Box 6 of the Form W-2.

#### Inquiries

Direct all inquiries concerning payroll items, such as employee business expense, equipment maintenance, rent, territorial cost-of-living allowance (TCOLA), money differences between earnings statement and Form W-2 (see Reconciliation Formula on Form W-2), leave buy backs, erroneous state or local tax deductions, Thrift Savings Plan (TSP), and Flexible Spending Accounts (FSAs) to the Accounting Help Desk at 866-974-2733.

Provide the following information:

- Employee name.
- Current mailing address.
- Social Security number and Employee ID.
- Year(s) involved.
- Specific question.

#### Or

Submit questions regarding Forms W-2 in writing to the following addresses in the table.

<b>Form W-2 inquiries concerning payroll items</b> Provide employee name, current mailing address, Social Security number and Employee ID, year(s) involved, specific question, and employee signature. <b>If the first two digits of your Finance number are...</b>	
01–99 (Rural Employees)	<b>Send a written request to....</b> Attn: Payroll Adjustments W-2 Eagan Accounting Services 2825 Lone Oak Parkway Eagan, MN 55121- <b>9635</b>
01–10	Attn: Payroll Adjustments W-2 Eagan Accounting Services 2825 Lone Oak Parkway Eagan, MN 55121- <b>9634</b>
11–32	Attn: Payroll Adjustments W-2 Eagan Accounting Services 2825 Lone Oak Parkway Eagan, MN 55121- <b>9636</b>
33–99	Attn: Payroll Adjustments W-2 Eagan Accounting Services 2825 Lone Oak Parkway Eagan, MN 55121- <b>9661</b>
<b>Form W-2 inquiries relating to Postal Service payments made under the Annuity Protection Program (APP)</b> Provide employee name, current mailing address, Social Security number and Employee ID, year(s) involved, specific question, and employee signature.	
	<b>Send a written request to....</b> Eagan Accounting Services 2825 Lone Oak Parkway Eagan, MN 55121- <b>9630</b>

#### General Questions

##### Source of Reported Wages

The Wages and Other Compensation amount reported in Box 1 of Form W-2 is derived from year-to-date totals reflected on the employee’s Pay Period 26-2021 (or the last pay period in pay status 2021) Earnings Statement, plus several other totals from the Form W-2. The employee’s Earnings Statement year-to-date amounts and the Reconciliation Formula calculation specific to the employee are printed on the employee’s Form W-2 (top left section of the page). In addition, employees can access this information via the *PostalEASE* W-2 module.

*Flexible Spending Accounts (FSAs): Dependent Care (DC) and Health Care (HC)*

Employee contributions to an FSA for dependent care are pre-tax and are reported in Box 10 (Dependent Care Benefits). Per the Reconciliation Formula, FSA contributions are subtracted from gross pay and are not included in Box 1 (Wages, tips, other compensation).

Employee contributions to an FSA for health care are pre-tax and are not reported separately in any box on the Form W-2. Per the Reconciliation Formula, FSA contributions are subtracted from gross pay and are not included in Box 1 (Wages, tips, other compensation). See your Pay Period 26-2021 (or the last pay period in pay status 2021) Earnings Statement year-to-date amount to determine your total Health Care FSA contributions made in 2021.

*Thrift Savings Plan (TSP)*

Employee TSP traditional (pre-tax) contributions including TSP Catch-up (employees 50 years old and older) are reported in Box 12 (letter code "D").

Per the Reconciliation Formula, traditional TSP contributions (Box 12, letter code "D") are subtracted from gross pay and are not included in Box 1 (Wages, tips, other compensation).

TSP Roth (post-tax) contributions including TSP Roth Catch-Up are reported in Box 12 (letter code "AA"). TSP Roth contributions do not reduce gross pay; they are included in Box 1 (Wages, tips, other compensation). Roth contributions (letter code "AA") are reported for your information only.

*Federal Employees Health Benefits (FEHB)*

FEHB premiums are considered pre-tax unless the employee declined the pre-tax benefit. Payroll deductions for pre-tax FEHB premium payments are no longer reported separately in any box on the Form W-2. Per the Reconciliation Formula, payroll deductions for pre-tax FEHB premiums are subtracted from gross pay and are not included in Box 1 (Wages, tips, other compensation). See your Pay Period 26-2021 (or the last pay period in pay status 2021) Earnings Statement year-to-date amount to determine your total pre-tax FEHB premium payments made in 2021.

The Cost of Employer-Sponsored Health Coverage (employer cost plus employee pre-tax or post-tax cost) is reported in Box 12 (letter code "DD"). Reporting is required by the Affordable Care Act but is reported for informational purposes only.

*Health Savings Accounts (HSAs)*

Employee HSA contributions are pre-tax and are reported in Box 12 (letter code "W"). Per the Reconciliation Formula, employee HSA contributions (Box 12) are subtracted from gross pay and are not included in Box 1 (Wages, tips, other compensation).

*Federal Employees Dental and Vision Insurance Program (FEDVIP)*

FEDVIP premiums are considered pre-tax. Per the Reconciliation Formula, payroll deductions for FEDVIP premiums are subtracted from gross pay and are not included in Box 1 (Wages, tips, other compensation). See your Pay Period 26-2021 (or the last pay period in pay status 2021) Earnings Statement year-to-date amount to determine your total pre-tax FEDVIP premium payments made in 2021.

*USPS Health Benefits (HB)*

USPS® HB premiums are considered post-tax, unless the employee opts for pre-tax deductions. Post-tax premiums are included in Box 1 (Wages, tips, other compensation).

For those employees who elected pre-tax premiums, the pre-tax premium payments are not reported separately in any box on the Form W-2. Per the Reconciliation Formula, payroll deductions for pre-tax USPS HB premiums are subtracted from gross pay and are not included in Box 1 (Wages, tips, other compensation). See your Pay Period 26-2021 (or the last pay period in pay status 2021) Earnings Statement year-to-date amount to determine your total pre-tax USPS HB premium payments made in 2021.

The Cost of Employer-Sponsored Health Coverage, (employer share plus employee pre-tax or post-tax share), is reported in Box 12 (letter code "DD"). Reporting is required by the Affordable Care Act, but such reporting is for informational purposes only.

*Commuter Program*

Employee contributions for the Commuter Program are considered pre-tax for 2021 up to the Internal Revenue Service (IRS) \$270 monthly limit for public transportation and the IRS \$270 monthly limit for parking. Per the Reconciliation Formula, employee pre-tax commuter contributions are subtracted from gross pay and are not included in Box 1 (Wages, tips, other compensation). See your Pay Period 26-2021 (or the last pay period in pay status 2021) Earnings Statement year-to-date amount to determine your total Commuter Program contributions made in 2021. Any commuting contributions elected over the IRS limits are considered post-tax. Post-tax contributions do not reduce gross pay; they are included in Box 1 (Wages, tips, other compensation).

*Relocation Payments*

The Tax Cuts and Jobs Act (TCJA) of 2017 eliminated the federal exclusion for relocation expenses. As a result, moving expenses incurred on or after January 1, 2018, and reimbursed to an employee or vendor on the employee's behalf, are reportable income (included in Boxes 1, 3, and 5, and considered subject to federal tax withholding).

Most states have conformed to TCJA and relocation expenses will be included in box 16 (State Wages) and box 18 (Local Wages), if applicable. The states that did not conform to TCJA as of December 2021, and continue to exclude certain relocation expenses from state taxable wages (and local, if applicable) are Arkansas, California, Hawaii, Massachusetts, New Jersey, New York, and Pennsylvania.

For more information, see the statements issued by the Postal Service Relocation Management firm (Sterling Lexicon).

#### *Employee Business Expense (EBE)*

Equipment maintenance allowance (EMA), carrier drive-out, vehicle hire, and supervisor vehicle usage are considered employee expenses paid by the U.S. Postal Service®. The nontaxable (not the total) EBE amount is reported in Box 12 (letter code "L"). If there is a taxable amount, it is reported in Box 14 (Other). Per the Reconciliation Formula, taxable vehicle (Box 14) is added to gross pay and is included in Box 1 (Wages, tips, other compensation).

#### *Imputed Life Insurance*

Imputed Income Life Insurance is reported in Box 12 (letter code "C"). The IRS requires employers to report as income the employer cost of Group Term Life Insurance in excess of \$50,000.

Per the Reconciliation Formula, Imputed Income Life Insurance (Box 12) is added to gross pay and is included in Box 1 (Wages, tips, other compensation).

#### *Locality Pay, LEAP, AUO*

Per the Reconciliation Formula, Locality Pay, LEAP (Law Enforcement Availability Pay), and AUO (Administratively Uncontrollable Overtime) are added to gross pay and are included in Box 1 (Wages, tips, other compensation).

#### *Geographic (GEO) Pay*

Per the Reconciliation Formula, GEO Pay is added to gross pay and is included in Box 1 (Wages, tips, other compensation).

#### *Military Differential Payments*

Military Differential Payments are reported in Box 14 (Other) and are included in Box 1 (Wages, tips, other compensation). Differential payments made to an individual while on active duty for more than 30 days are not subject to Social Security and Medicare taxes. Differential payments made to an individual while on active duty for 30 days or less are subject to Social Security and Medicare taxes.

#### *Oregon Statewide Transit Tax*

Oregon Statewide Transit Tax (ORSTT) is reported in Box 14 (Other).

#### *State/Territory Reportable Wages*

The amount in Box 16 (State wages, tips, etc.) will equal Box 1 (Wages, tips, other compensation) with the following exceptions:

- Hawaii includes territorial cost-of-living allowance (TCOLA) in Box 16 (State wages, tips, etc.).
- California does not allow income deferral for HSAs.
- Mississippi does not allow income deferral for commuter program public transportation and parking.
- New Jersey allows no income deferral. Therefore, there is no income deferral for TSP, FSA DC, FSA HC, HB, HSA, FEDVIP, or a commuter program (public transportation and parking).
- Pennsylvania does not allow income deferral for TSP, FSA Dependent Care, or a commuter program (public transportation and parking); however, Pennsylvania does not require the addition of Imputed Income Life Insurance to state gross pay.
- Puerto Rico does not allow income deferral for employee FSA DC, FSA HC, HB, HSA, FEDVIP, or a commuter program (public transportation and parking) contributions.
- Arkansas, California, Massachusetts, New Jersey, New York, and Pennsylvania still have exclusions for certain relocation expenses. See section on "Relocation Payments."

#### *Local Reportable Wages*

The following statements do not take into account taxable wage limits that exist for certain localities. For those localities, amounts in Box 18 (Local wages, tips, etc.) will not exceed local taxable wage limits.

The amount in Box 18 (Local wages, tips, etc.) will equal gross pay with the following exceptions:

- New York City, NY; St. Louis, MO; and MI Locals (Battle Creek, Detroit, Flint, Grand Rapids, Lansing, Pontiac, and Saginaw): Local taxable wages are the same as the federal taxable wages reported in Box 1 (Wages, tips, other compensation).
- Kansas City, MO: Local taxable wages equals federal taxable wages plus HSA.
- OH Locals (Akron, Brecksville, Brook Park, Canton, Cincinnati, Cleveland, Columbus, Dayton, Fairview Park, Heath, Kettering, Mansfield, Newark, Oberlin, Sharonville, Springfield, Toledo, Whitehall, and Youngstown): Local taxable wages equals federal taxable wages plus TSP and minus Life Insurance Imputed Income.



- With the exception of Philadelphia and Pittsburgh, PA Locals (Bethlehem, Erie, Greene, Hanover, Harrisburg, Horsham, Lancaster, Middletown, Reading, Scranton, South Park, Sunbury/Gregg, Tinicum, Warminster, Wilkes-Barre, and York) are the same as the PA taxable wages reported in Box 16 (State wages, tips, etc.).
- New York and Pennsylvania still have exclusions for certain relocation expenses. See section on “Relocation Payments.”

## Obtaining Duplicate Forms W-2 for Tax Years 2015 to the Present

### PostalEASE

Employees may use the *PostalEASE* W-2 module to view and print official, electronic copies of their Forms W-2 for any of the last 7 years, including the most recent W-2 year.

Except for an approximate 6-week period (mid-December through late January), an employee may also exercise the option to have reprinted copies of any of the seven most recent Tax Year Form(s) W-2 mailed to his or her home address. Requests are processed weekly (daily during March and April). Employees must allow 2 weeks to receive the W-2 reprint(s) by mail to the address of record. In mid to late January 2022, Tax Year 2021 will be loaded to the *PostalEASE* W-2 module. At the same time, Tax Year 2014 will be removed from the W-2 module.

### PostalEASE Interactive Voice Response (IVR)

USPS Employees now have the option to request a duplicate Form W-2 reprint by telephone using the *PostalEASE* automated Interactive Voice Response (IVR) system.

Access *PostalEASE* at 877-477-3273 through the following steps:

1. For *PostalEASE*, press or say “1.”
2. Press or say 8-digit “Employee Identification Number.”
3. Press or say 4-digit “USPS Pin.”
4. For payroll options, press 2.
5. For W-2 reprints, press 3.

### Written Request

If you are unable to obtain duplicate Form(s) W-2 via <i>PostalEASE</i> for Tax Years 2014 to Present	Send a written request to....
Provide employee name, current mailing address, Social Security number and Employee ID, year(s) requested, and employee signature.	Financial Reporting Section (W-2) Eagan Accounting Services 2825 Lone Oak Parkway Eagan, MN 55121-9617

## Obtaining Duplicate Forms W-2 for Tax Years 2014 and Older

Eagan Accounting Services does not retain W-2 records older than 7 years.

To request duplicate Forms W-2 older than 7 years	Send a written request to....
Provide employee name, current mailing address, Social Security number, date of birth, requested tax years, name and location of employing Federal agency, beginning and ending dates of Federal service and signature (signed in cursive and dated within the last year).	National Personnel Records Center, Annex 1411 Boulder Boulevard Valmeyer, IL 62295-2603 Fax: 618-935-3014

## Form W-2c, Corrected Wage and Tax Statement

### General Form W-2c Information

The Postal Service uses Form W-2c to correct a previously filed Form W-2. The Form W-2c will only report the corrections and must be used in conjunction with the original Form W-2 issued when filing taxes and other related information.

If you disagree with the Form W-2 tax information provided and you want the tax statement to be reviewed and corrected, you must submit your request in writing.

To request a Form W-2 review (and correcting Form W-2c)	Send a written request to....
Provide employee name, current mailing address, Social Security number and Employee ID, year(s) requested, reason for request, and employee signature. Send request as follows: <b>If the first two digits of your Finance number are...</b>	
01-99 (Rural Employees)	Attn: Payroll Adjustments W-2 Eagan Accounting Services 2825 Lone Oak Parkway Eagan, MN 55121-9635
01-10	Attn: Payroll Adjustments W-2 Eagan Accounting Services 2825 Lone Oak Parkway Eagan, MN 55121-9634
11-32	Attn: Payroll Adjustments W-2 Eagan Accounting Services 2825 Lone Oak Parkway Eagan, MN 55121-9636
33-99	Attn: Payroll Adjustments W-2 Eagan Accounting Services 2825 Lone Oak Parkway Eagan, MN 55121-9661

To request a Form W-2 review (and correcting Form W-2c) for Postal Service payments made under the Annuity Protection Program (APP)	Send a written request to....
<b>Annuity Protection Program</b> Provide employee name, current mailing address, Social Security number and Employee ID, year(s) requested, reason for request, and employee signature.	Eagan Accounting Services 2825 Lone Oak Parkway Eagan, MN 55121-9630

# Pull-Out Information

## Fraud

### Invalid USPS Corporate Account Numbers

Provide this listing to Contract Postal Units and acceptance clerks in non-POS locations without intranet access to validate a USPS Corporate Account (USPSCA) number online. For all other locations, online USPSCA validation is preferred. This list supersedes all previous notices, which you must recycle.

Acceptance clerks must not accept Priority Mail Express® shipments bearing an invalid USPSCA number in the “Payment by Account” or “Agreement Number” section of the label or form.

**Note:** The first 6 digits of a 9-digit Custom Designed Service and Next Day Pickup Agreement make up the Corporate Account Number.

<b>005846</b>	021909	067197	103281	124078	272354	372505	<b>503007</b>	<b>605640</b>	895130	928260	958952	995126
008590	022906	070043	108956	<b>208428</b>	274160	<b>445158</b>	531317	641814	<b>904110</b>	941444	970233	995342
009413	029479	091934	112070	208562	<b>301418</b>	470016	537199	<b>740441</b>	914115	950700	971072	995374
009909	034640	097527	112148	208623	303101	480049	551008	743090	915001	954012	980381	
016846	038609	<b>100226</b>	117604	208679	314281	480082	551250	755007	917623	958113	980742	
018544	044002	100863	119177	210272	338017	486328	554236	<b>871028</b>	924478	958402	982297	

— Product Information Requirements, Mail Entry and Payment Technology, 1-27-22

# USPS® Serves Up *Espresso Drinks*

Forever®  
Stamps

On Sale  
Nationwide:  
April 9, 2021



## Missing, Lost, or Stolen U.S. Money Order Forms

**Do Not Cash — Upon Receipt, Notify Local Postal Inspectors**

Provide this listing to all Postal Service™ employees responsible for accepting and cashing postal money orders. Destroy all interim notices when the numbers listed appear in the *Postal Bulletin*. The new money order serial

numbers consist of the first 10 digits. The eleventh digit is a check digit only.

Do not cash outdated money orders **104 151 601 to 692 600 000**. Advise holders to send invalid money orders to Canada Post Corporation, Ottawa, Canada K1A 0B1. Check for altered dollar amounts by holding money orders to the light.

<b>010 001 0200 to 0299</b>	043 205 5922 to 5999	083 784 8886 to 8899	174 281 9347 to 9399
010 504 1932 to 1999	044 087 3457 to 3499	083 913 6915 to 6999	175 251 2600 to 0699
011 582 1889 to 1899	044 087 4000 to 4099	084 478 3920 to 3999	176 281 7937 to 7950
011 588 2900 to 3099	044 226 2487 to 2512	086 000 8271 to 8299	176 281 7963 to 7999
012 441 0784 to 0799	044 306 4200 to 4299	086 798 3840 to 3849	176 731 6586 to 6599
012 579 5675 to 5699	044 306 4370 to 4599	088 404 4472 to 4499	178 254 5000 to 9999
013 289 6176 to 6199	045 524 4121 to 4298	088 404 5584 to 5699	178 881 9900 to 9999
013 610 0014 to 0099	046 800 9870 to 9899	088 757 8688 to 8699	<b>180 031 2089 to 2098</b>
014 932 1000 to 1099	047 352 4000 to 4099	088 757 9400 to 9499	180 403 7723 to 7741
014 972 0800 to 0899	048 383 7650 to 7659	089 358 2248 to 2257	180 428 4580 to 0599
015 363 0065 to 0099	048 396 3647 to 3699	<b>090 663 9678 to 9684</b>	182 368 7544 to 0599
017 028 3200 to 3299	<b>051 142 0755 to 0799</b>	091 818 0071 to 0099	182 475 3229 to 3258
018 569 5333 to 5399	051 774 8857 to 8899	093 106 9346 to 9355	182 475 3904 to 9334
018 986 5264 to 5299	051 781 2875 to 2885	093 203 0500 to 0599	182 631 0031 to 0099
019 518 2814 to 2899	051 977 7010 to 7023	093 684 3630 to 3699	182 911 6539 to 6600
020 698 5159 to 5199	052 058 7115 to 7199	094 081 5074 to 5099	184 218 2760 to 2799
<b>020 844 7307 to 7399</b>	054 450 1130 to 1167	094 216 2555 to 2599	185 828 1474 to 1499
020 972 8948 to 8999	057 670 0563 to 0599	094 580 7062 to 7099	186 132 7583 to 0599
022 021 9110 to 9181	058 187 3836 to 3899	094 639 4200 to 4299	186 629 0589 to 0599
022 037 1411 to 1499	058 523 3003 to 3099	095 070 7186 to 7199	187 184 6177 to 0199
022 527 9201 to 9210	058 591 1153 to 1299	095 076 8300 to 8399	187 323 8200 to 8299
022 529 1882 to 1899	058 895 3746 to 3799	095 354 6864 to 6899	187 441 6080 to 6099
023 637 7169 to 7199	059 986 0814 to 0899	097 224 1350 to 1599	188 831 6774 to 6799
024 380 4100 to 4199	<b>060 406 7650 to 7699</b>	<b>100 160 3800 to 3899</b>	188 835 6370 to 6399
024 496 6870 to 6899	063 491 8122 to 8199	104 667 6400 to 6499	189 083 1064 to 1099
025 092 0987 to 0999	063 916 9968 to 9999	104 876 8937 to 8999	189 660 9583 to 9599
025 369 5535 to 5599	064 091 4500 to 4599	112 049 4413 to 4499	<b>191 179 0377 to 0399</b>
025 729 1151 to 1199	065 170 0471 to 0499	112 870 9765 to 9799	192 050 5762 to 5781
025 729 1643 to 1799	065 255 7909 to 7999	113 319 2000 to 2099	194 456 8600 to 0699
026 492 3180 to 3199	065 392 6345 to 6399	114 402 3850 to 3899	195 194 6881 to 6899
027 361 0430 to 0499	066 099 2014 to 2099	114 866 5368 to 5397	195 874 1112 to 1199
027 369 4482 to 4495	066 648 2880 to 2899	116 154 2800 to 2899	196 979 0524 to 0599
027 671 8762 to 8776	066 787 3639 to 3699	116 986 4400 to 4499	197 244 6100 to 6199
027 787 9886 to 9899	066 845 7500 to 9999	117 175 1647 to 5169	197 244 6300 to 6399
027 965 9487 to 9499	067 093 3869 to 3899	117 951 4687 to 4699	197 244 6400 to 6499
028 100 8069 to 8099	068 895 0334 to 0399	117 951 5200 to 5299	197 244 6500 to 6599
028 191 1852 to 1999	<b>070 724 4488 to 4499</b>	119 786 3051 to 3064	197 244 6600 to 6699
028 850 3000 to 3199	070 841 9181 to 9199	119 815 8961 to 6199	197 244 6700 to 6799
029 510 1500 to 1599	070 844 2546 to 2599	119 850 7400 to 7499	197 244 6800 to 8999
<b>030 687 0903 to 0999</b>	070 916 1340 to 1399	119 850 7700 to 7999	198 285 2556 to 2566
030 701 3442 to 3499	071 047 5768 to 5799	<b>121 634 0460 to 0499</b>	199 105 0778 to 0799
031 077 4507 to 4799	071 179 9800 to 9899	122 451 9879 to 9899	199 678 2968 to 2999
032 295 7500 to 9999	071 386 3682 to 3699	122 714 6805 to 6900	<b>202 748 5133 to 5199</b>
034 394 1000 to 1099	071 507 6840 to 6899	124 916 0304 to 0499	202 748 5245 to 5299
034 943 0400 to 0799	072 045 9641 to 9699	126 423 0136 to 0169	202 748 5300 to 5399
035 035 4337 to 4399	072 675 8287 to 8299	127 500 2328 to 2399	202 748 5400 to 5499
037 312 7500 to 7599	073 763 0867 to 0876	<b>160 901 2254 to 2299</b>	203 256 1240 to 1299
037 706 9578 to 9599	073 763 0878 to 0887	161 103 6581 to 6599	204 230 3577 to 3595
037 805 3677 to 3699	073 763 0889 to 0898	161 194 2857 to 0899	205 019 0174 to 0199
037 909 5490 to 5499	077 617 5481 to 5499	162 032 4447 to 4499	206 936 3184 to 3199
037 931 4660 to 4699	077 999 4001 to 4090	163 257 1085 to 1099	207 196 9900 to 9999
039 145 6521 to 6595	078 174 4475 to 4499	164 359 2406 to 2499	207 204 0700 to 0799
<b>040 024 3901 to 3999</b>	078 219 4931 to 4999	166 101 1433 to 1499	207 204 0800 to 0899
040 674 7100 to 7199	078 250 4756 to 4799	167 555 5201 to 5212	207 514 3857 to 3899
040 688 8816 to 8899	078 823 8312 to 8399	167 555 5214 to 5299	208 556 4707 to 4799
041 299 6752 to 6799	079 374 0300 to 2499	169 618 6274 to 6299	<b>210 057 4038 to 4047</b>
041 623 8889 to 8899	079 807 2342 to 2399	<b>171 806 6878 to 6893</b>	210 221 0548 to 0599
041 803 6565 to 6599	<b>082 721 0228 to 0254</b>	173 639 4685 to 4699	214 061 4711 to 4724
043 129 1968 to 1997	083 140 5000 to 7499	174 238 2779 to 2799	214 303 6311 to 6325

214 303 6239	to	6258	252 833 3286	to	3297	258 405 6900	to	6999	262 337 4800	to	4899
214 877 4251	to	4273	253 470 3948	to	3999	258 405 7000	to	7099	262 337 4900	to	4999
215 252 3918	to	3992	253 565 7400	to	7499	258 405 7100	to	7199	262 337 5000	to	5099
<b>217 585 1400</b>	<b>to</b>	<b>1499</b>	254 252 2800	to	2899	258 405 7200	to	7299	262 337 5100	to	5199
218 698 2157	to	2199	254 252 2900	to	2999	258 405 7300	to	7399	262 337 5200	to	5299
218 746 0800	to	0899	254 252 3000	to	3099	258 405 7400	to	7499	262 337 5300	to	5399
219 095 0100	to	0399	254 252 3100	to	3199	258 405 7800	to	7899	262 337 5400	to	5499
219 389 1885	to	1899	254 252 3200	to	3299	258 405 7900	to	7999	262 337 5500	to	5599
219 568 7435	to	7456	254 252 3300	to	3399	258 405 8000	to	8099	262 337 5600	to	5699
219 568 7469	to	7487	254 252 3400	to	3499	258 405 8100	to	8199	262 337 5700	to	5799
<b>221 316 5757</b>	<b>to</b>	<b>5799</b>	254 252 3500	to	3599	258 405 8200	to	8299	262 337 5800	to	5899
223 476 3914	to	3999	254 252 3600	to	3699	258 405 8300	to	8399	262 337 5900	to	5999
223 565 4921	to	4957	254 252 3700	to	3799	258 405 8400	to	8499	262 337 6000	to	6099
223 565 4979	to	4999	254 252 3800	to	3899	258 405 8500	to	8599	262 337 6100	to	6199
224 636 4745	to	4765	254 252 3900	to	3999	258 405 8600	to	8699	262 337 6200	to	6299
224 636 4776	to	4799	254 252 4000	to	4099	258 405 8700	to	8799	262 337 6300	to	6399
224 636 4855	to	4885	254 252 4100	to	4199	258 405 8800	to	8899	262 337 6400	to	6499
224 636 4932	to	4948	254 252 4200	to	4299	258 405 8900	to	8999	262 337 6500	to	6599
224 636 4950	to	4962	254 252 4300	to	4399	258 405 9600	to	9699	262 337 6600	to	6699
224 636 4985	to	4999	254 252 4400	to	4499	258 405 9700	to	9799	262 337 6700	to	6799
224 723 0757	to	0799	254 252 4500	to	4599	258 405 9800	to	9899	262 337 6800	to	6899
224 730 2207	to	2299	254 252 4600	to	4699	258 405 9900	to	9999	262 337 6900	to	6999
225 970 0500	to	0599	254 252 4700	to	4799	259 014 9989	to	9999	262 337 7000	to	7099
225 970 0600	to	0699	254 252 4800	to	4899	259 062 4788	to	4798	262 337 7100	to	7199
225 970 0700	to	0799	254 252 4900	to	4999	259 218 1400	to	1499	262 337 7200	to	7299
227 033 8679	to	8699	254 565 7607	to	7700	259 218 1500	to	1599	262 337 7300	to	7399
227 275 9400	to	9999	254 907 1203	to	1299	259 218 1600	to	1699	262 337 7400	to	7499
228 463 2456	to	2499	255 185 9527	to	9599	259 590 5654	to	5699	262 337 7500	to	7599
228 510 4852	to	4899	255 397 1557	to	1576	259 670 8268	to	8299	262 337 7600	to	7699
229 462 8451	to	8475	255 425 2989	to	2998	259 835 6238	to	6399	262 337 7700	to	7799
229 668 5977	to	5999	255 728 6412	to	6499	259 835 6701	to	6799	262 337 7800	to	7899
229 923 9176	to	9199	255 728 9842	to	9899	<b>260 224 4600</b>	<b>to</b>	<b>4699</b>	262 337 7900	to	7999
229 924 6696	to	6699	256 134 9833	to	9839	260 224 5941	to	5999	262 337 8000	to	8099
<b>230 051 9500</b>	<b>to</b>	<b>9999</b>	256 134 9840	to	9849	260 310 2821	to	2899	262 337 8100	to	8199
236 366 2431	to	2499	256 134 9850	to	9859	260 452 0010	to	0022	262 337 8200	to	8299
236 607 6882	to	6899	256 134 9860	to	9869	260 452 0049	to	4299	262 337 8300	to	8399
236 660 5853	to	5872	256 134 9870	to	9879	260 553 8200	to	8299	262 337 8400	to	8499
239 322 5200	to	5299	256 134 9880	to	9889	260 553 8600	to	8699	262 337 8500	to	8599
239 322 5400	to	5499	256 134 9890	to	9899	260 553 9600	to	9799	262 337 8600	to	8699
239 322 5600	to	5699	256 247 6900	to	6999	260 553 9800	to	9899	262 337 8700	to	8799
239 322 5800	to	5899	256 550 5536	to	5545	260 553 9900	to	9999	262 337 8800	to	8899
239 322 5900	to	5999	256 799 2257	to	2299	260 761 1603	to	1662	262 337 8900	to	8999
239 607 4783	to	4799	257 154 8763	to	8799	261 183 2100	to	2299	262 337 9000	to	9099
<b>240 593 1879</b>	<b>to</b>	<b>1899</b>	257 154 8800	to	8899	261 426 0408	to	0499	262 337 9100	to	9199
242 591 2048	to	2099	257 765 4567	to	4599	262 082 8000	to	8099	262 337 9200	to	9299
242 735 0388	to	0398	257 765 4610	to	4696	262 082 8100	to	8199	262 337 9300	to	9399
242 951 7276	to	7299	257 765 4737	to	4799	262 082 8200	to	8299	262 337 9400	to	9499
243 535 6370	to	6399	257 792 7800	to	7889	262 082 8300	to	8399	262 337 9500	to	9599
244 004 9985	to	9999	257 792 7900	to	7999	262 082 8400	to	8499	262 337 9600	to	9699
244 004 9985	to	9999	257 792 8000	to	8099	262 288 7302	to	7399	262 337 9700	to	9799
244 268 9765	to	9799	257 856 9863	to	9899	262 288 7400	to	7499	262 337 9800	to	9899
244 347 4471	to	4499	258 103 1773	to	1782	262 288 9900	to	9999	262 337 9900	to	9999
249 056 1551	to	1599	258 405 1800	to	1899	262 337 2600	to	2699	262 472 3188	to	3199
249 336 9438	to	9499	258 405 1900	to	1999	262 337 2700	to	2700	262 472 3200	to	3299
249 399 4000	to	4099	258 405 3300	to	3399	262 337 2800	to	2800	262 546 3100	to	3199
249 399 4100	to	4199	258 405 3400	to	3499	262 337 2900	to	2900	262 546 3200	to	3299
249 399 4200	to	4299	258 405 3500	to	3599	262 337 3000	to	3099	262 546 3300	to	3399
249 399 4300	to	4399	258 405 3700	to	3799	262 337 3100	to	3199	262 546 3400	to	3499
249 399 4400	to	4499	258 405 3800	to	3899	262 337 3200	to	3299	262 546 3500	to	3599
249 399 4500	to	4599	258 405 3900	to	3999	262 337 3300	to	3399	262 546 3600	to	3699
249 399 4600	to	4699	258 405 4000	to	4099	262 337 3400	to	3499	262 546 3900	to	3999
249 399 4700	to	4799	258 405 4100	to	4199	262 337 3500	to	3599	262 546 4300	to	4399
249 399 4800	to	4899	258 405 4200	to	4299	262 337 3600	to	3699	262 546 4400	to	4499
249 399 4900	to	4999	258 405 4600	to	4699	262 337 3700	to	3799	262 546 4500	to	4599
<b>250 159 7502</b>	<b>to</b>	<b>7599</b>	258 405 5600	to	5699	262 337 3800	to	3899	262 546 4600	to	4699
250 566 9644	to	9699	258 405 5700	to	5799	262 337 3900	to	3999	262 546 4700	to	4799
250 661 8425	to	8499	258 405 5800	to	5899	262 337 4000	to	4099	262 546 4800	to	4899
251 335 5731	to	5799	258 405 5900	to	5999	262 337 4100	to	4199	262 546 4900	to	4999
251 379 2380	to	2399	258 405 6000	to	6099	262 337 4200	to	4299	262 546 7100	to	7199
252 005 7626	to	7699	258 405 6100	to	6199	262 337 4300	to	4399	262 546 7200	to	7299
252 421 8401	to	8499	258 405 6200	to	6299	262 337 4400	to	4499	262 546 7300	to	7399
252 464 2810	to	2899	258 405 6300	to	6399	262 337 4500	to	4599	262 546 7400	to	7499
252 612 3683	to	3699	258 405 6400	to	6499	262 337 4600	to	4699	262 546 9800	to	9899
252 469 2125	to	2199	258 405 6800	to	6899	262 337 4700	to	4799	262 546 9900	to	9999



262 567 1788 to 1799	389 887 9234 to 9299	412 395 8599 to 8699	437 427 0500 to 3499
263 254 2500 to 2500	<b>390 001 3182 to 3199</b>	412 485 6500 to 6599	439 179 2300 to 2399
263 340 0000 to 0099	390 001 3500 to 3699	412 485 6610 to 6699	439 310 0458 to 0499
263 340 0100 to 0199	390 545 5974 to 5999	412 885 5953 to 5999	<b>440 698 1947 to 1999</b>
263 340 0500 to 0599	391 104 6146 to 6199	414 193 3608 to 3674	440 858 6300 to 6399
263 340 0600 to 0699	391 574 1466 to 1499	414 193 3677 to 3699	440 858 6420 to 7299
263 340 2700 to 2799	391 783 3020 to 3599	414 411 7348 to 7399	441 199 1655 to 1699
263 340 2800 to 2899	391 792 6100 to 6199	414 640 0757 to 0799	443 127 3648 to 3699
263 340 3000 to 3099	392 668 2956 to 2999	414 965 1727 to 1799	443 127 4000 to 4099
264 341 2360 to 2399	392 854 8500 to 8899	417 302 8104 to 8199	443 673 7900 to 7999
264 380 4000 to 4099	393 584 7566 to 7699	417 387 6532 to 6599	443 800 9335 to 9399
264 380 4100 to 4199	393 650 0074 to 0099	417 496 6800 to 6999	444 382 8822 to 8899
264 799 6049 to 6099	393 838 8316 to 8499	417 871 9250 to 9299	444 390 1667 to 1699
264 860 7832 to 7868	393 893 6007 to 6099	417 930 9533 to 9599	444 457 3854 to 3899
265 127 3658 to 3699	394 126 6907 to 6999	418 164 6500 to 6799	<b>450 048 4173 to 4199</b>
265 380 7111 to 7137	394 189 0405 to 0599	418 423 9863 to 9899	450 048 4442 to 4699
265 444 4762 to 4799	394 822 3243 to 3278	418 633 5922 to 5999	450 560 5173 to 5199
265 548 7074 to 7099	394 990 1810 to 1899	418 719 8520 to 8599	450 620 3077 to 3099
266 106 0000 to 2499	395 343 3264 to 3299	418 744 2235 to 2299	450 620 3135 to 3199
266 129 5809 to 5899	395 373 3035 to 3099	418 962 2848 to 2899	450 780 2716 to 2799
266 673 0000 to 2499	395 396 9649 to 9799	419 543 0286 to 0299	450 801 2700 to 2799
266 749 7900 to 7999	395 970 3240 to 3299	419 730 0300 to 0399	451 109 2967 to 2984
266 868 0952 to 0999	397 622 4054 to 4099	<b>420 277 0015 to 0049</b>	451 115 4110 to 4125
266 868 1028 to 1099	397 819 8902 to 8999	420 599 0734 to 0798	451 115 4127 to 4199
266 868 1100 to 1199	398 149 7200 to 7699	420 661 4115 to 4199	451 746 0700 to 0799
266 868 1200 to 1299	399 070 0872 to 0899	420 758 9500 to 9699	452 265 0074 to 0099
267 296 1237 to 1299	399 156 7119 to 7199	420 969 3951 to 3971	452 265 0246 to 0299
267 324 8946 to 8998	399 203 5064 to 5099	420 969 3973 to 3999	452 265 0335 to 0999
268 072 1203 to 1299	399 296 9910 to 9999	421 116 3565 to 3599	452 509 1169 to 1199
<b>271 660 4333 to 4400</b>	399 396 8935 to 8999	421 130 9300 to 9399	452 855 6471 to 6499
273 520 0000 to 9999	399 792 7775 to 7799	421 313 4500 to 4999	452 890 4679 to 4799
273 520 6000 to 8999	399 792 8300 to 8399	421 364 5537 to 5599	452 900 8215 to 8238
273 775 7700 to 7899	<b>400 427 1051 to 1999</b>	421 656 2609 to 2699	453 117 9146 to 9199
273 882 1913 to 1998	401 045 1505 to 1549	421 988 9700 to 9799	453 334 3631 to 3699
274 750 0300 to 0400	401 045 1571 to 1599	422 172 4667 to 4699	453 603 7841 to 7891
274 782 0549 to 0599	401 294 2700 to 2799	422 484 4212 to 4299	453 650 1140 to 1199
<b>302 000 0000 to 9999</b>	401 310 9505 to 9599	422 556 1270 to 1299	453 741 1300 to 1399
<b>349 746 2056 to 2099</b>	401 382 5312 to 5399	422 587 7024 to 7099	454 013 2919 to 2999
<b>350 518 7350 to 7374</b>	402 578 7876 to 7899	422 819 7533 to 7599	454 186 2411 to 2499
<b>360 011 1690 to 1699</b>	403 125 6744 to 6799	422 842 5073 to 5087	454 268 4883 to 4899
360 168 6008 to 6099	403 260 7000 to 7499	422 907 7563 to 7599	454 302 5400 to 5499
360 173 8800 to 8899	403 280 6470 to 6499	424 500 6050 to 6099	454 490 8300 to 8399
360 324 2326 to 2399	403 685 8600 to 8699	424 641 8500 to 8599	454 547 7434 to 7499
362 861 3064 to 3099	404 003 0300 to 0399	424 871 6600 to 6699	454 922 4867 to 4895
<b>373 006 2176 to 2199</b>	404 041 8838 to 8899	425 298 2352 to 2399	455 221 1348 to 1499
374 768 2600 to 2699	404 071 4268 to 4299	425 418 4269 to 4299	455 364 2147 to 2199
375 169 4400 to 4599	404 347 5356 to 5399	425 418 4405 to 4499	455 399 5400 to 5499
375 829 3400 to 3499	404 347 5548 to 5599	426 547 4566 to 4599	455 476 0676 to 0699
375 851 9100 to 9199	404 726 4500 to 4599	427 412 6337 to 6499	455 543 0618 to 0699
376 196 0911 to 0999	404 961 5001 to 5199	427 481 0900 to 0999	456 410 9006 to 9099
378 085 3679 to 3699	405 325 0188 to 0198	428 027 2742 to 2752	456 470 4146 to 4299
378 351 1063 to 1099	406 009 4587 to 4599	429 474 4172 to 4199	456 619 4460 to 4499
379 843 5100 to 5199	406 260 6830 to 6899	429 889 2900 to 2999	457 333 2686 to 2699
<b>380 093 9600 to 9699</b>	406 459 6641 to 6999	<b>430 150 4401 to 4599</b>	457 729 1767 to 1777
380 165 1165 to 1199	406 733 3000 to 3999	430 172 9800 to 9899	457 937 8615 to 8699
381 325 4500 to 4599	407 545 1557 to 1599	430 177 1900 to 2099	458 028 9810 to 9899
381 604 2510 to 2699	407 594 0412 to 0599	430 444 9500 to 9699	458 057 2712 to 2999
381 645 9525 to 9599	407 692 9100 to 9299	430 664 4070 to 4099	458 069 9537 to 9599
383 314 3968 to 3999	407 959 2190 to 2199	432 168 8419 to 8499	458 069 9665 to 9699
383 892 1000 to 1344	408 265 2275 to 2288	432 708 6800 to 6999	458 337 5222 to 5299
383 892 1382 to 1399	408 499 7700 to 7799	432 744 1544 to 1599	458 354 7653 to 7999
384 925 3641 to 3654	408 499 7900 to 7999	432 995 9775 to 9799	458 671 8678 to 8699
385 568 2331 to 2399	408 682 8484 to 8599	433 003 5800 to 5899	458 671 8721 to 8798
385 599 7554 to 7575	408 698 7015 to 7099	433 757 3047 to 3099	458 847 5044 to 5999
385 774 2024 to 2099	409 072 3941 to 3999	433 765 4003 to 4099	459 274 7624 to 7699
386 624 1412 to 1599	<b>410 491 2311 to 2399</b>	434 482 7060 to 7199	459 365 5432 to 5499
386 883 8936 to 8999	410 694 8400 to 8599	434 513 2386 to 2399	459 378 5764 to 5799
387 314 5574 to 5599	410 775 1500 to 1599	434 968 3076 to 3092	459 472 4816 to 4999
387 837 6300 to 6399	410 795 7927 to 7999	435 303 1831 to 1842	<b>460 349 6878 to 6899</b>
388 828 0656 to 0699	410 867 0917 to 0966	435 303 1986 to 1999	460 550 1909 to 1999
389 696 2400 to 2799	410 867 0970 to 0999	435 666 6092 to 6399	460 997 5234 to 5299
389 846 3104 to 3135	411 868 1023 to 1199	436 082 6400 to 6899	461 973 6443 to 6499
389 846 3145 to 3195	411 922 2322 to 2399	436 160 6441 to 6499	462 152 0107 to 0299
389 887 9211 to 9230	412 193 0900 to 0999	437 316 7115 to 7199	462 274 1072 to 1099

462 277 8373	to	8399	482 541 5255	to	5299	504 240 1062	to	1399	609 766 8091	to	8999
462 554 6051	to	6099	482 729 6800	to	6899	504 805 3300	to	3499	609 825 4100	to	4115
463 011 5529	to	5540	483 363 7207	to	7299	505 096 0662	to	0699	609 884 2981	to	2999
463 176 4115	to	4199	483 402 2356	to	2399	505 893 7739	to	7799	609 893 1000	to	1099
463 176 4229	to	4299	483 486 5100	to	5199	505 893 7800	to	7999	<b>610 092 3200 to 3299</b>		
463 185 2600	to	2799	483 632 1521	to	1599	506 124 0800	to	0999	610 582 4200	to	4299
463 227 7711	to	7799	483 632 2600	to	2799	506 165 7027	to	0099	611 879 6939	to	6999
463 414 4869	to	4899	483 849 1615	to	1699	506 502 5209	to	5299	612 291 8013	to	8099
463 808 3484	to	3499	484 174 4803	to	5299	506 756 1682	to	1699	612 751 5171	to	5199
463 945 7400	to	7899	484 323 8900	to	9199	506 756 1700	to	1799	612 751 5226	to	5299
464 629 9000	to	9399	484 680 5000	to	5038	506 756 1800	to	1899	612 751 6083	to	6099
464 711 4332	to	4399	484 680 5040	to	5074	506 836 5326	to	5399	612 751 6268	to	6299
465 692 3963	to	3999	484 680 5077	to	5099	508 488 6226	to	6299	612 751 6572	to	6599
465 698 8300	to	8599	485 029 4913	to	4999	508 789 8332	to	8399	612 774 2111	to	2199
465 743 7745	to	7799	486 176 0600	to	0699	508 789 8400	to	8499	612 774 2254	to	2299
466 798 6056	to	6067	486 559 7555	to	7599	509 909 0425	to	0435	612 774 2500	to	2599
467 147 4300	to	4399	486 696 3023	to	3199	<b>510 150 2400 to 2499</b>			614 469 0979	to	0999
468 079 5782	to	5799	488 173 7900	to	7999	510 381 3200	to	3299	614 474 3000	to	3099
469 067 2817	to	2899	488 206 4100	to	4199	510 587 9500	to	9599	614 521 3490	to	3499
469 127 8000	to	8199	488 226 0200	to	0299	510 587 9659	to	9699	614 645 1800	to	1899
469 213 0359	to	0399	488 709 3906	to	3999	510 269 9770	to	9999	614 832 1100	to	2099
469 213 0500	to	0599	488 855 8359	to	8399	511 021 5042	to	5099	615 017 7505	to	7599
469 561 8011	to	8099	489 181 8963	to	8999	511 021 5100	to	5199	617 711 6609	to	6699
469 658 1961	to	1999	489 223 2000	to	2099	511 468 1747	to	1799	617 760 5266	to	5299
469 666 9900	to	9999	489 311 1930	to	1999	511 844 0100	to	0199	617 813 3601	to	3699
469 678 1900	to	1999	489 318 6200	to	6300	511 844 0340	to	0399	618 840 9200	to	9299
469 781 4900	to	4999	489 384 0027	to	0099	512 805 3913	to	3919	619 551 7229	to	7299
469 947 6960	to	6999	489 427 0658	to	0899	513 046 0700	to	0726	619 859 3000	to	3099
<b>470 755 5800 to 5818</b>			489 997 5252	to	5299	513 149 0600	to	0699	<b>620 073 9400 to 9499</b>		
471 918 0300	to	0999	<b>490 669 5850 to 6099</b>			513 445 3000	to	3199	621 614 7907	to	7930
471 985 2408	to	2419	490 717 7080	to	7099	513 466 2034	to	2044	621 614 7932	to	7999
472 191 6700	to	6799	490 721 6000	to	6099	513 539 9052	to	9099	621 648 8021	to	8199
472 270 2555	to	2599	490 793 1500	to	2099	513 539 9267	to	9299	621 648 8500	to	8599
472 987 0213	to	0241	490 886 8171	to	8199	513 539 9800	to	9899	621 904 8351	to	8599
472 987 0290	to	0299	490 977 9221	to	9240	513 539 9985	to	9999	621 916 1978	to	1989
473 151 2069	to	2199	491 258 8100	to	9099	513 606 5459	to	5490	622 989 8032	to	8099
473 666 9138	to	9199	491 567 1376	to	1399	513 812 1751	to	1799	623 076 9300	to	9399
473 952 3429	to	3499	492 254 4800	to	4899	514 103 3600	to	3699	623 819 5006	to	5099
474 108 5402	to	5499	492 283 5100	to	5199	514 103 3700	to	3799	623 895 8200	to	8399
474 356 5193	to	5299	492 610 6813	to	6899	514 103 3800	to	3899	623 917 0000	to	0099
474 949 3366	to	3399	493 394 5568	to	5599	<b>600 645 3223 to 3299</b>			623 917 0200	to	0299
475 134 9362	to	9399	493 470 2562	to	2599	601 339 1200	to	1399	624 468 5288	to	5299
475 167 9667	to	9699	493 473 7700	to	7799	601 653 5884	to	5899	624 665 3162	to	3198
475 319 3415	to	3499	493 716 2153	to	2199	601 661 7700	to	7799	625 088 6735	to	6799
475 319 3649	to	3799	494 206 2972	to	2999	601 682 5343	to	5399	625 916 9500	to	9799
475 340 6400	to	6599	494 217 3446	to	3999	601 928 1600	to	1699	625 968 8956	to	8999
475 424 8410	to	8499	494 224 0500	to	0599	602 512 2972	to	2999	627 005 3938	to	3999
475 629 9156	to	9199	495 145 0600	to	0699	602 555 2400	to	2799	627 384 3907	to	4099
475 850 6101	to	6199	496 209 7425	to	7499	602 829 7061	to	7099	627 496 7549	to	7599
475 875 2500	to	2599	496 213 8728	to	8799	603 483 9572	to	9599	627 708 3605	to	3699
476 169 8264	to	8299	496 474 5226	to	5248	603 490 7200	to	7299	627 776 2500	to	2599
476 189 3000	to	3499	497 053 8517	to	8699	603 678 7100	to	7199	628 226 3100	to	3199
476 331 2480	to	2499	497 854 8673	to	8699	603 678 7662	to	7699	628 814 4702	to	4799
477 289 8601	to	8699	498 449 8888	to	8899	603 678 7902	to	7999	628 851 9689	to	9699
477 681 5206	to	5299	498 929 8285	to	8499	603 678 8418	to	8499	629 510 7200	to	7299
478 010 4243	to	4268	498 936 5310	to	5399	603 678 8700	to	9999	629 964 4200	to	4294
478 010 4270	to	4291	499 016 5425	to	5499	604 086 0880	to	0899	<b>630 389 3056 to 3071</b>		
478 450 5071	to	5099	499 440 8575	to	8899	604 349 1414	to	1499	630 463 0588	to	0599
478 469 7838	to	7858	499 731 6717	to	6799	604 503 7776	to	7799	631 459 9117	to	9199
478 469 7883	to	7899	<b>500 064 1858 to 1869</b>			605 520 9037	to	9099	631 762 9325	to	9399
479 280 9800	to	9899	500 070 5725	to	7799	605 685 4010	to	4099	632 217 4933	to	4999
479 365 9116	to	9176	501 058 0016	to	0026	605 988 6467	to	6499	632 500 0000	to	640 3999
479 412 9900	to	9999	501 331 0300	to	0399	607 689 7951	to	7960	633 110 4165	to	4199
479 667 6190	to	6199	501 460 0977	to	0999	607 728 1276	to	1299	633 110 4303	to	4499
479 748 9680	to	9699	502 227 7645	to	7699	608 727 7100	to	7199	633 438 6429	to	6599
479 860 7000	to	7199	502 424 0200	to	0499	608 727 7273	to	7599	633 588 7173	to	7182
<b>480 526 2000 to 2099</b>			502 424 0600	to	0699	608 813 9950	to	9999	634 725 0700	to	0799
480 640 6330	to	6399	502 496 6923	to	6999	609 067 5325	to	5399	634 803 3239	to	3299
480 658 0568	to	0599	503 003 2700	to	2899	609 067 5488	to	5499	634 807 2474	to	2499
480 689 5100	to	5199	503 194 5144	to	5153	609 067 5600	to	5699	634 827 5900	to	5999
481 072 9463	to	9499	503 790 9922	to	9948	609 289 6123	to	6199	634 886 3428	to	3499
481 673 0074	to	0095	504 045 4030	to	4099	609 438 4400	to	4499	635 559 3449	to	3499
482 527 1500	to	1599	504 166 0200	to	0599	609 493 1100	to	1199	636 289 6214	to	6299

636 634 8007	to	8042	651 882 2800	to	2899	683 118 2389	to	2399	701 838 2800	to	2899
637 150 1200	to	1299	652 754 6317	to	6399	683 378 2000	to	2099	701 941 0600	to	0699
637 562 5828	to	5899	653 131 4945	to	4999	683 378 2117	to	2299	702 171 1603	to	1699
638 042 1647	to	1699	653 426 3300	to	3399	683 415 1200	to	1499	702 195 5109	to	5199
638 049 4984	to	4999	653 455 4874	to	4899	683 444 8159	to	8199	702 254 9300	to	9399
638 318 1115	to	1199	654 238 0000	to	0399	685 154 7780	to	7789	702 264 7569	to	7599
638 318 1453	to	1499	654 404 3065	to	3092	685 247 7645	to	7699	702 519 0513	to	0524
638 885 0000	to	0299	654 962 2900	to	3199	685 623 5264	to	5299	702 713 1800	to	1809
638 903 4362	to	4373	655 103 5081	to	5199	685 650 9487	to	9499	702 821 5730	to	5799
639 415 1929	to	1999	655 523 2600	to	2999	685 669 4200	to	4299	702 821 5805	to	5899
639 415 2019	to	2099	656 305 2448	to	2499	685 757 8452	to	8499	702 844 6975	to	6994
639 420 6200	to	6299	657 347 4438	to	4999	686 071 2694	to	2799	702 846 6331	to	6399
639 469 3517	to	3799	657 710 8100	to	8999	686 176 3333	to	3354	702 848 3900	to	3999
639 605 2143	to	2199	657 780 0985	to	0999	686 372 3200	to	3299	702 857 7302	to	7499
639 657 8600	to	8799	658 586 1400	to	1499	686 644 5879	to	5899	702 878 0114	to	0199
<b>640 289 7500</b>	<b>to</b>	<b>7599</b>	658 877 8000	to	8199	686 899 1371	to	1399	703 364 1707	to	1799
640 289 7700	to	7999	658 880 8000	to	8199	686 931 7636	to	7699	<b>740 002 7710</b>	<b>to</b>	<b>7719</b>
641 170 4420	to	4499	659 398 7300	to	7399	687 601 0973	to	0999	740 037 6730	to	6800
641 318 3133	to	3199	659 706 8113	to	8199	687 614 6774	to	6799	740 119 2275	to	2284
641 378 6500	to	6999	659 846 7837	to	7899	688 120 9000	to	9999	740 130 6688	to	6698
641 383 8739	to	8799	<b>660 510 4100</b>	<b>to</b>	<b>4199</b>	688 314 3107	to	3191	740 144 2780	to	2795
641 877 3187	to	3299	660 673 0400	to	0599	<b>690 291 1361</b>	<b>to</b>	<b>1371</b>	740 241 9049	to	9099
641 877 3310	to	3399	661 488 5000	to	5099	690 788 2877	to	2899	740 252 9265	to	9294
642 355 8094	to	8199	661 609 9100	to	9199	690 893 5344	to	5399	740 255 1718	to	1799
642 355 8308	to	8999	661 716 9420	to	9499	690 893 5512	to	5599	740 274 2602	to	2619
642 900 0018	to	0099	661 906 6522	to	6599	690 904 1300	to	1599	740 277 0366	to	0392
643 030 6254	to	6299	662 021 8332	to	8399	690 941 6000	to	6199	740 332 7658	to	7671
644 066 0882	to	0899	662 068 0700	to	0899	691 313 6383	to	6399	740 348 6641	to	6658
644 069 0600	to	0699	662 553 0774	to	0799	691 313 6600	to	6699	740 351 4790	to	4799
644 077 7506	to	7699	663 078 7034	to	7099	691 582 8003	to	8099	740 374 7416	to	7499
644 085 8157	to	8199	663 763 5300	to	5399	691 664 1800	to	1999	740 470 2420	to	2443
644 112 9839	to	9899	663 883 7039	to	7499	691 664 2400	to	2499	740 514 0300	to	0499
644 373 9083	to	9099	663 938 9200	to	9299	692 727 9362	to	9399	740 523 7432	to	7449
644 380 1460	to	1499	664 253 8000	to	8499	692 798 1800	to	1899	740 535 1555	to	1580
644 733 4715	to	4799	664 656 3055	to	3099	693 249 0779	to	0799	740 557 3570	to	3579
644 900 9712	to	9799	665 174 6400	to	6499	693 249 0877	to	1699	740 650 4104	to	4140
644 901 0109	to	1299	665 274 8208	to	8299	693 445 0566	to	0999	740 684 0620	to	0800
644 901 1325	to	1399	665 669 5400	to	5499	693 448 8500	to	8999	740 701 6105	to	6114
644 923 6800	to	7799	666 132 8226	to	8299	693 645 9583	to	9599	740 705 9790	to	9799
644 932 4655	to	4699	666 696 2209	to	2299	693 965 4200	to	4299	740 726 6400	to	6500
645 318 7240	to	7499	666 696 2309	to	2399	695 741 2906	to	2999	740 748 8319	to	8329
645 333 1766	to	1799	667 032 9300	to	9399	695 947 8518	to	8599	740 765 3306	to	3399
645 790 8632	to	8699	667 729 5529	to	5599	696 662 8247	to	8299	740 774 8434	to	8499
645 821 0657	to	0699	668 383 8400	to	8699	697 447 8285	to	8296	740 779 4259	to	4299
645 930 7948	to	7999	<b>670 368 3400</b>	<b>to</b>	<b>3499</b>	698 042 4816	to	4899	740 786 1885	to	1899
645 975 0737	to	0762	670 369 7336	to	7399	698 131 2138	to	2157	740 790 5989	to	5999
646 242 6200	to	6299	670 750 7169	to	7199	698 227 0000	to	0099	740 803 4870	to	4879
646 270 7639	to	7799	671 046 6200	to	6399	<b>700 065 2570</b>	<b>to</b>	<b>2599</b>	740 820 4854	to	7836
646 798 4000	to	4999	671 251 5448	to	5499	700 065 4800	to	4899	740 827 7578	to	7594
647 048 7035	to	7099	671 926 5600	to	5799	700 190 3350	to	3359	740 917 7490	to	7499
647 049 2900	to	2999	672 444 2000	to	2999	700 228 6048	to	6099	740 918 5531	to	5549
647 398 8300	to	8399	672 828 3410	to	3499	700 650 0452	to	0499	741 037 8528	to	8551
647 398 8481	to	8499	673 167 5776	to	5799	700 666 1323	to	1349	742 030 6135	to	6149
647 437 3000	to	4999	675 464 3700	to	3799	700 786 9106	to	9142	742 033 2663	to	2674
647 811 2188	to	2199	675 464 4000	to	4199	700 859 0744	to	0758	742 040 3300	to	3309
648 009 6057	to	6099	676 365 5958	to	5999	701 028 6780	to	6899	742 112 8155	to	8199
648 163 5300	to	5499	676 669 1024	to	1099	701 213 3900	to	3999	742 151 5000	to	5014
648 722 5283	to	5299	677 126 6734	to	6799	701 267 2000	to	3999	742 191 4640	to	4649
648 892 3164	to	3199	677 333 9979	to	9999	701 335 7312	to	7399	742 192 5210	to	5224
649 100 3989	to	3999	677 466 1088	to	1099	701 369 2005	to	2050	742 222 9200	to	9210
649 647 0370	to	0399	678 071 4500	to	4799	701 499 2260	to	2299	742 228 9660	to	9669
649 647 0522	to	0599	678 096 7531	to	7599	701 503 2247	to	2299	742 247 6980	to	6989
649 647 5237	to	5399	679 909 2578	to	2599	701 541 2271	to	2299	742 290 0936	to	0950
649 647 9100	to	9299	<b>680 112 9565</b>	<b>to</b>	<b>9599</b>	701 553 6557	to	6599	742 302 7600	to	7699
649 666 7800	to	8299	680 244 0903	to	0999	701 578 7460	to	7469	742 305 3711	to	3799
<b>650 114 7707</b>	<b>to</b>	<b>7719</b>	680 412 6046	to	6099	701 578 7475	to	7499	742 305 3800	to	3899
650 130 3400	to	3599	680 761 6800	to	6899	701 601 3457	to	3499	742 305 3900	to	3999
650 213 0406	to	0499	681 677 0540	to	0699	701 605 5913	to	5999	742 305 4000	to	4099
650 555 1749	to	1799	682 070 1029	to	1099	701 695 3982	to	3999	742 305 4100	to	4199
650 564 1900	to	1999	682 956 6280	to	6299	701 695 4148	to	4199	<b>805 885 8411</b>	<b>to</b>	<b>8499</b>
650 627 4212	to	4299	682 956 6490	to	6599	701 695 4227	to	4299	806 087 1100	to	1499
650 736 2043	to	2099	682 956 6700	to	6799	701 708 1741	to	1799	806 268 9275	to	9299
650 739 1540	to	1699	682 965 1178	to	1199	701 736 3966	to	3999	806 534 3400	to	3477
651 741 4415	to	4499	682 965 1201	to	1299	701 772 0870	to	0899	807 342 3283	to	3399

808 086 7100	to	7199	855 361 3390	to	3399	902 198 9769	to	9799	918 460 0602	to	0699
808 090 3440	to	3499	856 226 0490	to	0499	902 948 1269	to	1299	918 951 7231	to	7299
808 325 5161	to	5699	856 656 5800	to	5999	902 985 0833	to	0899	919 519 2786	to	2799
808 784 8000	to	8299	856 752 0200	to	0299	903 370 6934	to	6999	919 536 0770	to	0799
<b>830 125 0672</b>	<b>to</b>	<b>0699</b>	857 111 1352	to	1399	904 600 6523	to	6599	919 814 3095	to	3199
830 602 5800	to	5999	857 279 3450	to	3499	904 892 0378	to	0399	919 889 5110	to	5134
830 610 3700	to	3799	857 843 4000	to	4099	904 892 0648	to	1299	919 889 5137	to	5176
830 983 3500	to	3599	858 124 7644	to	7699	905 056 2216	to	2299	919 889 5178	to	5199
830 983 3635	to	3699	858 756 3111	to	3299	905 510 6647	to	6799	919 889 5030	to	5070
831 354 1387	to	1399	859 063 8200	to	8699	905 510 6900	to	7099	919 889 5090	to	5099
831 815 8240	to	8299	859 190 0600	to	0644	905 794 0000	to	0199	919 915 2774	to	2787
832 525 3810	to	3899	859 437 5538	to	5599	905 794 0288	to	0299	<b>920 155 4662</b>	<b>to</b>	<b>4687</b>
833 159 1884	to	1899	859 811 2888	to	2899	905 873 6900	to	6999	920 309 9039	to	9199
833 456 2567	to	2599	859 855 8873	to	8999	905 873 7100	to	7299	920 771 5321	to	5399
833 566 3015	to	3071	<b>860 240 8520</b>	<b>to</b>	<b>8599</b>	905 889 8900	to	8999	920 857 5500	to	5899
834 130 5200	to	5299	860 275 3900	to	3999	905 889 7100	to	7199	920 864 3480	to	3499
834 316 5444	to	5499	860 518 9629	to	9699	906 158 1508	to	1599	920 963 4567	to	4599
834 354 8747	to	8766	860 600 0021	to	0999	906 558 8812	to	8899	921 333 7400	to	7499
834 354 8824	to	8838	861 158 2350	to	2599	906 882 2214	to	2299	921 477 3762	to	3799
835 269 5700	to	5799	861 367 5400	to	5499	907 725 8500	to	8599	922 278 1048	to	1399
835 496 7303	to	7399	861 637 6010	to	6099	907 815 0216	to	0257	922 280 2019	to	2099
835 539 5200	to	5999	861 979 7292	to	7499	908 622 4225	to	4235	922 280 2233	to	2299
835 813 3015	to	3099	862 216 6100	to	6199	908 936 9254	to	9299	922 773 0459	to	0499
837 672 8967	to	8999	862 263 9213	to	9299	909 066 4494	to	7499	923 032 7000	to	7399
837 784 3282	to	3299	862 271 0800	to	0999	909 067 7400	to	7499	923 045 3630	to	3699
838 176 8377	to	8399	862 271 5000	to	5099	909 100 1787	to	1799	923 484 3600	to	3699
838 518 1257	to	1299	863 871 5138	to	5199	909 100 1900	to	2099	923 493 9403	to	9599
839 718 8257	to	8299	863 949 5300	to	5399	909 355 0422	to	0499	923 493 9681	to	9699
<b>840 323 0600</b>	<b>to</b>	<b>0699</b>	864 088 8200	to	8299	909 568 8900	to	9099	923 604 4424	to	4499
840 875 6235	to	6299	864 426 3972	to	3999	909 568 9300	to	9499	923 810 7800	to	8299
840 910 0900	to	0999	864 520 6117	to	6136	909 725 7307	to	7399	924 252 1200	to	1299
841 349 5000	to	5099	865 151 0526	to	0599	909 833 0947	to	0999	924 252 1400	to	1499
841 805 7747	to	7899	865 500 4034	to	4099	<b>910 219 8631</b>	<b>to</b>	<b>8699</b>	924 533 0711	to	0799
841 805 7944	to	8099	865 883 6082	to	6099	910 265 1100	to	1199	924 533 2343	to	2399
842 226 0685	to	0695	866 004 3000	to	3999	910 471 7273	to	7299	924 533 2428	to	2499
842 685 4600	to	4699	866 442 4100	to	4899	910 536 2505	to	2599	924 685 1957	to	1999
842 685 4742	to	4999	867 366 9108	to	9118	910 958 7499	to	7599	924 946 6300	to	6699
842 860 0300	to	0399	867 633 7403	to	7499	911 140 1000	to	2199	925 333 5900	to	6099
842 898 5582	to	5599	867 737 5623	to	5699	911 245 2545	to	2599	925 336 2300	to	2399
843 062 7100	to	7199	868 169 4529	to	4599	911 268 9077	to	9099	926 432 5907	to	5999
843 077 6288	to	6299	868 173 8400	to	8599	911 400 8948	to	8999	926 436 3600	to	3699
843 077 6378	to	6399	868 514 9000	to	9099	911 508 1620	to	1799	927 765 6257	to	6299
843 758 5769	to	5778	868 566 9200	to	9299	911 509 9310	to	9399	928 197 8100	to	8199
843 786 2554	to	2699	869 200 0000	to	9999	911 523 3000	to	3999	928 197 8283	to	8299
845 656 8165	to	8199	869 387 1150	to	1199	912 057 9922	to	9999	928 856 2059	to	2068
845 727 2100	to	2199	869 505 3500	to	3599	912 882 0563	to	0899	<b>930 078 5800</b>	<b>to</b>	<b>5899</b>
845 746 2618	to	2635	869 523 7033	to	7099	913 605 2218	to	2299	930 219 1722	to	1799
846 390 7531	to	7599	869 566 6150	to	6167	913 709 2429	to	2499	930 335 7810	to	7819
846 918 0572	to	0599	869 776 8785	to	8786	913 818 3501	to	3999	931 097 9259	to	9299
847 237 7690	to	7699	869 800 0000	to	9999	914 063 4300	to	4399	931 156 1502	to	1579
847 284 2481	to	2499	<b>870 054 4814</b>	<b>to</b>	<b>4899</b>	914 346 7621	to	7644	931 156 1600	to	1625
847 374 7055	to	7065	870 491 4812	to	4849	914 453 1366	to	1399	931 156 1671	to	1699
847 374 7055	to	7065	870 536 5820	to	5829	914 529 6185	to	6299	932 506 6400	to	6599
847 636 5304	to	5399	870 541 7167	to	7239	914 896 4658	to	4699	932 732 1796	to	1799
847 700 5447	to	5499	870 575 8155	to	8999	915 187 8774	to	8779	932 827 9026	to	9099
847 723 7500	to	7599	870 589 0485	to	0494	915 300 2783	to	2799	932 957 2300	to	2399
849 485 3427	to	3499	870 691 7060	to	7099	915 546 6822	to	6999	933 060 6160	to	6189
849 520 9850	to	9899	872 028 4850	to	4899	915 646 5183	to	5199	933 387 2541	to	2561
849 608 1357	to	1399	872 029 9306	to	9399	915 671 3963	to	3980	933 760 3609	to	4199
849 792 2600	to	2699	872 078 3709	to	3799	915 671 3982	to	3999	933 894 0928	to	0999
<b>850 546 1862</b>	<b>to</b>	<b>1899</b>	872 100 0445	to	0459	915 675 2217	to	2299	934 018 2729	to	2741
851 143 6826	to	6844	<b>900 556 4178</b>	<b>to</b>	<b>4199</b>	916 440 3377	to	3399	934 180 0300	to	0399
851 209 9880	to	9899	900 845 0044	to	0099	916 670 6352	to	6399	934 236 3954	to	3999
851 928 9221	to	9299	900 936 0217	to	0299	916 682 5300	to	5399	934 622 8717	to	8999
852 589 6560	to	6599	900 936 0435	to	0499	916 694 1414	to	1499	935 216 0312	to	0399
853 049 3646	to	3699	901 058 5255	to	5280	916 703 0802	to	0821	935 843 2202	to	2247
854 304 4089	to	4999	901 273 1082	to	1099	917 089 0709	to	0799	936 024 8889	to	8899
854 529 2200	to	2299	901 287 5143	to	5199	917 089 0842	to	0899	936 339 4455	to	4499
854 532 0000	to	2999	901 291 2789	to	2799	917 216 2928	to	2999			
855 001 6204	to	6249	901 525 7122	to	7199	917 370 6300	to	6499			
855 319 9364	to	9399	902 089 1253	to	1299	917 486 4900	to	4999			

## Missing, Lost, or Stolen Canadian Money Order Forms

**Do Not Cash — Upon Receipt, Notify Local Postal Inspectors**

Provide this listing to all Postal Service™ employees responsible for accepting and cashing postal money orders. Destroy all interim notices when the numbers listed appear in the *Postal Bulletin*. The new money order serial

numbers consist of the first 9 digits. The tenth digit is a check digit only.

Do not cash outdated money orders **104 151 601 to 692 600 000**. Advise holders to send invalid money orders to Canada Post Corporation, Ottawa, Canada K1A 0B1. Check for altered dollar amounts by holding money orders to the light.

719 869 731	to	9 760	728 915 371	to	5 850	735 283 008	to	3 020	742 684 849	to	4 890
<b>720 227 871</b>	<b>to</b>	<b>7 930</b>	728 953 141	to	3 410	735 293 131	to	3 220	742 839 553	to	9 630
720 227 949	to	7 960	728 954 280	to	4 310	735 635 010	to	5 040	742 913 668	to	3 700
720 368 543	to	8 570	729 169 081	to	9 140	735 783 961	to	3 990	742 917 287	to	7 296
720 392 151	to	2 570	729 363 841	to	3 870	735 803 401	to	3 430	742 921 891	to	1 980
720 556 491	to	6 640	729 682 891	to	3 190	736 005 420	to	5 440	742 983 631	to	3 810
720 558 621	to	8 650	729 838 940	to	9 070	736 366 021	to	6 110	743 020 021	to	0 170
720 575 361	to	5 570	729 839 101	to	9 130	736 624 456	to	4 500	743 206 491	to	6 500
720 590 152	to	0 179	<b>730 077 683</b>	<b>to</b>	<b>7 840</b>	736 670 851	to	1 060	743 235 992	to	6 050
721 638 331	to	9 170	730 109 847	to	9 880	736 767 061	to	7 090	743 940 631	to	0 900
721 815 391	to	5 420	730 373 761	to	3 850	736 767 093	to	7 120	743 978 011	to	8 070
721 969 713	to	9 740	730 501 951	to	2 130	736 982 191	to	2 370	744 234 751	to	4 780
722 072 137	to	2 160	730 519 379	to	9 470	736 982 551	to	2 730	744 499 591	to	9 680
722 378 265	to	8 280	730 569 278	to	9 360	737 110 141	to	0 170	744 626 901	to	6 910
722 413 990	to	4 004	730 711 711	to	1 740	737 185 501	to	5 710	745 388 794	to	8 910
722 764 948	to	4 980	730 722 991	to	3 230	737 317 321	to	7 350	746 446 806	to	6 820
722 825 840	to	5 889	730 845 970	to	5 990	737 517 781	to	7 840	746 818 351	to	8 410
723 153 841	to	3 850	730 888 291	to	8 320	737 628 181	to	8 210	747 245 266	to	5 280
723 237 616	to	7 630	730 927 591	to	7 680	737 634 258	to	4 270	747 364 813	to	4 830
723 331 081	to	1 110	731 307 914	to	7 930	738 361 971	to	1 980	747 501 434	to	1 450
723 496 443	to	6 470	731 402 431	to	2 460	738 447 601	to	7 660	747 739 891	to	0 070
723 967 291	to	7 320	731 407 232	to	7 320	738 648 355	to	8 450	748 148 649	to	8 760
724 655 196	to	5 340	731 588 301	to	8 340	738 849 811	to	9 900	748 259 960	to	9 970
724 711 441	to	1 500	731 767 273	to	7 320	738 892 270	to	2 290	748 565 162	to	5 280
724 711 538	to	1 560	731 781 061	to	1 120	738 997 259	to	7 380	748 874 988	to	5 030
724 793 221	to	3 250	731 837 821	to	7 910	739 161 451	to	1 540	749 137 381	to	7 410
724 908 109	to	8 120	731 841 377	to	1 450	739 219 381	to	9 440	749 190 192	to	0 210
724 937 461	to	7 670	732 018 481	to	8 600	739 740 151	to	0 180	749 685 421	to	5 450
725 163 118	to	3 151	732 067 972	to	8 370	739 793 491	to	3 520	749 846 791	to	6 850
725 202 735	to	2 750	732 188 649	to	8 670	739 793 527	to	3 550	749 993 131	to	3 580
725 398 591	to	8 800	732 193 460	to	3 470	739 942 621	to	2 650	<b>750 071 587</b>	<b>to</b>	<b>1 610</b>
725 464 591	to	4 920	732 201 241	to	1 390	739 999 231	to	9 320	750 408 167	to	8 183
725 475 321	to	5 330	732 220 431	to	0 440	<b>740 011 517</b>	<b>to</b>	<b>1 530</b>	750 438 421	to	8 501
725 711 057	to	1 070	732 355 201	to	5 380	740 030 701	to	0 970	750 743 911	to	4 030
725 738 581	to	8 730	732 472 320	to	2 560	740 261 740	to	1 820	750 779 118	to	9 400
725 981 311	to	1 430	732 541 605	to	1 620	740 265 811	to	6 290	750 910 981	to	1 010
725 987 835	to	7 880	732 572 221	to	2 490	740 299 111	to	9 170	750 960 841	to	0 900
726 060 811	to	0 900	732 586 479	to	6 710	740 299 231	to	9 260	751 296 211	to	6 240
726 391 970	to	2 520	732 994 037	to	4 080	740 329 266	to	9 320	751 539 121	to	9 180
726 484 771	to	4 800	733 163 449	to	3 460	740 889 081	to	9 090	751 541 311	to	1 790
726 493 351	to	5 300	733 297 171	to	7 290	741 010 421	to	0 530	751 757 641	to	7 700
726 504 031	to	4 063	733 446 631	to	7 110	741 113 041	to	3 370	751 936 951	to	7 010
726 504 070	to	4 090	733 474 665	to	4 770	741 373 891	to	4 340	751 951 861	to	1 890
726 504 331	to	4 390	733 704 482	to	4 570	741 452 369	to	2 490	751 999 021	to	9 110
726 563 701	to	4 060	733 751 041	to	1 130	741 492 991	to	3 140	752 139 516	to	9 570
726 599 371	to	9 460	734 009 101	to	9 130	741 553 460	to	3 470	752 182 892	to	2 950
726 626 356	to	6 370	734 290 759	to	0 770	741 764 431	to	4 520	752 206 861	to	7 100
727 182 271	to	2 510	734 389 273	to	9 290	741 764 431	to	4 520	752 295 241	to	5 600
727 416 181	to	6 240	734 440 031	to	0 111	742 178 834	to	8 880	752 731 351	to	1 410
727 481 431	to	1 460	734 797 201	to	7 320	742 325 500	to	5 520	752 767 441	to	7 470
727 749 241	to	9 780	734 939 611	to	9 640	742 325 668	to	5 700	753 008 941	to	9 030
728 382 331	to	2 480	734 950 111	to	0 170	742 408 771	to	8 830	753 194 311	to	4 370
728 702 338	to	2 400	735 120 331	to	0 840	742 512 120	to	2 150	753 620 378	to	0 400



754 013 917	to 3 940	763 522 141	to 2 470	773 575 891	to 5 950	802 967 821	to 7 940
754 161 061	to 1 120	763 717 694	to 7 800	773 852 971	to 3 030	803 217 601	to 7 780
754 358 445	to 8 610	763 826 461	to 6 520	775 373 449	to 3 460	803 729 731	to 9 850
754 410 451	to 0 660	763 900 460	to 0 471	<b>789 257 191</b>	<b>to 7 250</b>	803 747 402	to 7 520
754 438 393	to 8 410	763 900 479	to 0 530	<b>790 448 020</b>	<b>to 8 460</b>	804 138 181	to 8 420
754 493 109	to 3 130	763 917 271	to 7 750	790 597 485	to 7 530	804 428 224	to 8 250
754 664 182	to 4 220	764 125 801	to 5 860	790 911 883	to 1 900	804 682 411	to 2 710
754 816 377	to 6 470	764 284 525	to 4 560	791 057 441	to 7 550	805 272 525	to 2 540
755 487 421	to 7 600	764 526 241	to 6 330	791 239 081	to 9 290	805 523 445	to 3 460
755 592 901	to 3 140	764 601 421	to 1 600	791 374 483	to 4 500	805 745 704	to 5 730
755 790 020	to 0 030	764 650 231	to 0 470	791 387 971	to 8 030	806 452 907	to 2 980
755 791 730	to 1 800	764 984 371	to 4 850	791 447 521	to 7 850	806 744 781	to 4 850
755 926 951	to 7 070	765 003 667	to 3 680	791 451 151	to 1 240	806 982 181	to 2 300
755 934 332	to 4 510	765 042 517	to 2 540	791 500 009	to 0 470	807 764 791	to 4 910
755 957 701	to 8 000	765 194 728	to 4 970	791 771 431	to 1 490	808 089 931	to 9 960
755 962 981	to 3 280	765 387 365	to 7 450	792 004 293	to 4 320	808 656 423	to 6 450
756 035 371	to 5 490	765 541 801	to 2 100	792 018 379	to 8 420	808 753 771	to 3 800
756 301 257	to 1 290	765 638 461	to 8 970	792 070 621	to 0 740	809 189 001	to 9 010
756 371 565	to 1 580	765 647 101	to 7 190	792 145 211	to 5 230	809 886 879	to 6 930
756 876 031	to 6 120	765 813 781	to 4 029	792 391 381	to 1 620	809 890 489	to 0 500
756 876 151	to 6 240	765 879 314	to 9 390	792 452 779	to 2 790	<b>810 323 734</b>	<b>to 3 760</b>
756 970 129	to 0 140	765 954 001	to 4 030	792 772 728	to 2 770	810 367 116	to 7 140
757 059 613	to 9 630	766 120 286	to 0 320	792 903 511	to 3 990	810 526 351	to 6 500
757 078 540	to 8 560	766 125 716	to 5 750	793 282 518	to 2 533	810 806 911	to 6 940
757 086 209	to 6 240	766 158 824	to 8 840	794 041 831	to 2 040	810 807 211	to 7 240
757 240 591	to 0 650	766 388 433	to 8 460	794 397 709	to 7 780	811 423 021	to 3 110
757 277 371	to 7 700	766 509 421	to 9 660	794 581 741	to 2 040	811 517 221	to 7 239
757 291 591	to 2 730	766 572 901	to 3 020	794 592 122	to 2 150	811 721 101	to 1 130
757 964 251	to 4 280	766 748 500	to 8 521	795 032 251	to 2 340	812 025 721	to 5 900
758 067 001	to 7 090	767 024 341	to 4 370	795 796 291	to 6 350	812 093 073	to 3 130
758 105 221	to 5 250	767 326 471	to 6 590	796 070 139	to 0 160	812 100 821	to 0 840
758 324 941	to 5 000	767 332 561	to 2 950	796 143 151	to 3 630	812 465 251	to 5 610
758 593 628	to 3 650	768 009 841	to 9 960	796 159 725	to 9 740	812 918 341	to 8 670
758 709 038	to 9 060	768 011 489	to 1 520	796 169 306	to 9 340	812 918 701	to 8 760
758 744 101	to 4 160	768 177 980	to 7 990	796 373 406	to 3 430	813 050 491	to 0 520
758 850 883	to 0 900	768 391 081	to 1 170	796 602 961	to 3 050	813 073 171	to 3 200
758 860 951	to 1 550	768 661 569	to 1 650	796 708 441	to 8 500	813 398 476	to 8 550
759 152 851	to 2 880	769 000 051	to 0 080	796 886 281	to 6 430	813 713 971	to 4 000
759 740 941	to 1 090	769 050 841	to 0 900	796 901 701	to 2 000	813 858 121	to 8 150
<b>760 004 596</b>	<b>to 4 610</b>	769 159 081	to 9 178	796 975 466	to 5 590	814 789 330	to 9 349
760 118 191	to 8 250	769 737 496	to 7 510	797 272 917	to 2 950	814 984 656	to 4 680
760 155 001	to 5 090	769 778 491	to 8 730	797 519 441	to 9 460	815 016 020	to 6 030
760 378 002	to 8 020	769 827 331	to 7 450	797 519 731	to 0 240	815 199 410	to 9 420
760 692 722	to 2 749	<b>770 216 071</b>	<b>to 6 100</b>	797 535 181	to 5 330	815 240 491	to 0 520
761 055 460	to 5 480	770 723 281	to 3 400	797 646 151	to 6 180	815 755 591	to 5 620
761 169 781	to 9 810	770 790 451	to 0 480	798 040 053	to 0 080	815 755 622	to 5 650
761 504 941	to 5 120	770 915 150	to 5 490	798 055 813	to 5 830	815 806 381	to 6 680
761 516 836	to 6 910	771 455 551	to 5 610	798 055 891	to 5 950	816 126 834	to 6 870
761 613 588	to 3 600	771 609 661	to 9 690	798 326 371	to 6 520	816 156 721	to 6 780
761 688 631	to 8 690	771 932 551	to 2 580	798 339 167	to 9 210	816 580 903	to 0 920
761 805 199	to 5 240	772 057 224	to 7 440	798 562 411	to 2 440	816 945 571	to 5 600
761 826 106	to 6 120	772 162 660	to 3 070	798 632 461	to 2 490	817 253 011	to 3 280
761 881 171	to 1 560	772 718 615	to 8 640	798 807 151	to 7 510	817 763 881	to 4 060
761 975 641	to 5 670	772 940 140	to 0 160	798 944 761	to 5 030	818 330 562	to 0 610
761 975 886	to 5 895	772 970 886	to 0 940	799 118 616	to 8 640	818 459 641	to 9 670
762 304 144	to 4 170	773 009 419	to 9 430	799 133 191	to 3 220	818 926 273	to 6 320
762 324 931	to 4 960	773 112 031	to 2 060	799 177 626	to 7 650	818 950 351	to 0 380
762 439 261	to 9 290	773 125 387	to 5 410	799 854 751	to 5 200	818 962 492	to 2 530
762 524 158	to 4 220	773 179 320	to 9 410	<b>800 044 320</b>	<b>to 4 410</b>	819 032 341	to 2 730
762 584 872	to 4 970	773 202 989	to 3 140	800 211 901	to 2 440	819 127 054	to 7 080
762 593 431	to 3 460	773 208 991	to 9 290	800 427 530	to 7 540	819 278 540	to 8 670
763 155 160	to 5 180	773 231 311	to 1 340	800 872 741	to 2 830	819 544 681	to 4 740
763 178 631	to 8 660	773 348 739	to 8 940	801 349 801	to 9 830	819 928 441	to 8 650
763 506 001	to 6 060	773 348 739	to 8 940	801 676 681	to 7 100	<b>820 034 406</b>	<b>to 4 430</b>

820 070 761	to 1 540	823 284 931	to 4 990	826 720 201	to 0 230	828 732 331	to 2 390
820 191 342	to 1 360	823 293 031	to 3 210	827 005 671	to 5 830	828 807 781	to 7 840
820 274 856	to 4 880	823 556 011	to 6 100	827 287 861	to 7 950	828 830 952	to 0 963
820 600 171	to 0 230	824 078 341	to 8 370	827 291 502	to 1 520	828 939 781	to 0 050
821 172 241	to 2 360	824 156 325	to 6 340	827 575 381	to 5 470	829 002 721	to 2 870
821 229 661	to 9 720	824 511 252	to 1 270	827 609 085	to 9 100	829 005 301	to 5 540
821 229 743	to 9 780	824 588 281	to 8 370	827 619 811	to 9 840	829 080 241	to 0 330
821 903 731	to 3 910	825 140 397	to 0 460	827 883 511	to 3 600	829 160 986	to 1 000
821 927 841	to 7 850	825 409 651	to 9 680	828 160 441	to 0 530	829 176 841	to 6 930
822 505 801	to 5 830	825 472 171	to 2 200	828 376 201	to 6 260	829 471 561	to 1 590
822 703 442	to 3 470	826 042 898	to 2 920	828 441 602	to 1 630	829 561 065	to 1 080
822 900 991	to 1 020	826 226 644	to 6 670	828 539 316	to 9 340	829 566 481	to 6 510
822 925 951	to 6 100	826 582 951	to 3 430	828 539 341	to 9 370	829 569 931	to 9 960

— Criminal Investigations Group, U.S. Postal Inspection Service, 1-27-22

## Verifying U.S. Postal Service Money Orders

Follow these steps to cash a Postal Service™ money order:

1. Check that the amount does not exceed the legal limit: \$1,000 for domestic, and \$700 for international Postal Service money orders.
2. Check that the proper security features are present:
  - When held to the light, a watermark of Benjamin Franklin is repeated from top to bottom on the left side.
  - When held to the light, a dark line (security thread) runs from top to bottom with the word “USPS” repeated.
  - When there is discoloration around the dollar amounts, this might indicate the amounts were changed.

These appear in Postal Service Notice 299, *U.S. Postal Money Order Reference Card*, or online at [usps.com/shop/money-orders.htm](https://usps.com/shop/money-orders.htm).

3. If the money order seems suspicious, call the U.S. Postal Service Money Order Verification System at 866-459-7822.

Provide this information to local banks and retailers, as they also receive Postal Service money orders for cashing.

— Delivery and Retail  
Customer Service Operations, 1-27-22

## Counterfeit Canadian Money Order Forms

### Do Not Cash

To be posted and used by retail window employees. As directed, destroy previous notices. Destroy all interim notices when the numbers listed appear in the *Postal Bulletin*.

671,819,086	683,594,542	687,262,503
676,612,640	684,683,610	687,262,525
677,891,039	686,619,878	687,262,526
678,282,493	686,619,886	687,287,578
678,916,031	686,619,887	687,287,581
679,552,215	686,794,382	687,287,582
679,694,334	686,794,426	694,063,898
679,751,983	686,794,427	694,063,899
679,800,207	686,794,431	694,063,980
681,130,536	687,262,502	701,321,725
681,844,376		

— Criminal Investigations Group,  
U.S. Postal Inspection Service, 1-27-22

## Toll-Free Number Available to Verify Canadian Money Orders

The Canada Post Corporation has a toll-free number that cashing agents can call to verify the validity of Canadian Postal Money Orders. The number is 800-563-0444.

This toll-free number is printed on the back of the Canadian Postal Money Orders.

— Criminal Investigations Group,  
U.S. Postal Inspection Service, 1-27-22

## Other Information

### Overseas Military/Diplomatic Mail

Mail addressed to military and diplomatic post offices overseas is subject to certain conditions or restrictions of mailing regarding content, preparation, and handling. The APO/FPO/DPO table outlines these conditions by APO/FPO/DPO ZIP Codes™ through the use of footnoted mailing restrictions codes (see the [Restrictions](#) page following the table).

Acceptance clerks must use the table with the Retail System Software terminal to determine which APO/FPO/DPO ZIP Codes are active and which conditions of mailing apply.

The entries under “Changes” appear in bold in the following APO/FPO/DPO table:

### Changes

APO/FPO/DPO	Action	Effective Date	See Restrictions
FPO AA 34058	Add C2, F2	01/10/2022	B-C2-F-F1-F2-F3-R-R1-S-V-Z1

We have eliminated “Not Active” entries from the table below to save space and paper.

### APO/FPO/DPO Table

APO/ FPO/ DPO	See Restrictions	APO/ FPO/ DPO	See Restrictions	APO/ FPO/ DPO	See Restrictions	APO/ FPO/ DPO	See Restrictions
09002	A-B-C2-F-F3-H-N-Q-R-S-V-Z-Z1	09044	B-C-D-F1-F3-H-R-S-U	09125	A-B-C-C2-F-F1-F3-H-N-R-R1-S-V-V1	09178	B-C1-C2-E2-F1-F3-I3-L-M-N-R-S-T-V-X-Z-Z1
09002	A-B-C2-F-F3-H-N-Q-R-S-V-Z-Z1	09046	B-C-D-E-F3-H-M-R-S-U	09126	B-C-C2-F3-H-M-P-R-S-Z1	09180	B-C-D-E-F3-H-M-R-S-U
09003	B-C-D-E-F3-H-M-P-R-S-U	09049	B-C-D-E-F3-H-M-R-S-U	09128	B-C-D-E-F3-H-M-R-S-U	09186	B-C-D-E-F3-H-M-P-R-S-U
09004	B-C-D-E-F3-H-M-R-S-U	09053	B-C-D-E-F3-H-M-R-S-U	09131	B-C-D-E-F3-H-M-R-S-U	09203	A-B-C-C1-C2-F-F1-F3-I3-J-L-M-N-R-R1-T-V-Z-Z1
09005	B-C-D-E-F3-H-M-P-R-S-U	09060	B-C-C2-D-E-F1-F3-H-M-N-R-S-U-Z1	09135	A-B-C2-F-F3-H-N-R-S-U-V-Z1	09204	B-C-F3-M-N-R-S-V-Z1
09006	B-C-D-E-F3-H-M-R-S-U	09067	B-C-D-E-F3-H-M-R-S-U	09136	B-C-D-E-F1-F3-H-M-P-R-S-U	09211	B-C-D-E-F3-H-M-P-R-S-U
09008	A-B-C2-F-F3-H-N-Q-R-S-V-Z-Z1	09068	B-C-C2-D-E-F3-H-R-S-U-Z1	09138	B-C-D-F3-H-M-R-S-U	09213	B-C2-F-F1-F3-H-J-L-M-N-R-R1-T-U-V-Z1
09009	B-C-C2-D-E-F3-H-M-R-S-U-Z1	09069	A-B-C-C2-D-E-F3-H-N-R-S-U-V	09140	B-C-D-E-F3-H-M-R-S-U	09214	B-C-C2-D-E-F3-H-M-R-S-U-Z1
09010	B-C-D-E-F3-H-M-R-S-U2	09079	B-C-D-E-F3-H-M-R-S-U	09142	B-C-D-E-F3-H-M-R-S-U	09216	B,C,F1,F3,M,N,R,S,V,Z1
09011	B-C-D-E-F3-H-M-R-S-U	09094	B-C-C2-D-F3-H-M-P-R-S-Z1	09154	B-C-D-E-F3-H-M-R-S-U	09227	B-C-D-E-F3-H-M-R-S-U
09012	B-C-C2-D-E-F3-H-M-R-S-U-Z1	09095	B-C-D-E-H-M-R-U	09160	B-C-C2-D-F-F1-F3-H-J-L-M-N-R-R1-T-U-V-Z1	09240	A-B-C1-C2-F-F3-H-N-R-S-V
09013	B-C-D-E-F-F1-F3-H-M-R-S-U-Z1	09096	B-C-D-E-F3-H-M-R-S-U	09170	A-B-C2-F-F1-F3-J-L-M-N-R-R1-S-T-V-X-Z1	09241	A-B-C2-F3-N-R-S-U-Z1
09014	B-C-D-E-F3-H-M-P-R-S-U	09103	A-B-C2-F-F3-H-N-Q-R-S-V-Z-Z1	09171	A-B-C1-C2-E3-F-F1-F3-J-L-M-N-R-R1-S-T-V-X-Z1	09242	A-B-C1-C2-F-F3-H-N-R-S-V
09015	A-B-C-C1-C2-F-F1-F3-J-L-M-N-R-R1-S-V-Z1	09104	B-C-C2-D-F3-H-M-R-S-U-Z1	09172	B-C-D-E-F3-H-M-R-S-U	09250	B-C-D-E-F3-H-M-R-S-U
09016	B-C-D-E-F1-F3-H-M-R-S-U	09107	B-C-D-E-F3-H-M-R-S-U	09173	B-C-D-E-F3-H-M-R-S-U	09261	B-C-C2-D-E-F3-H-M-N-R-S-U-V-Z1
09017	A-B-C2-F-F3-H-N-Q-R-S-V-Z-Z1	09112	B-C-D-E-F3-H-M-R-S-U	09174	B-C-C2-F-F1-F3-I3-L-N-R-R1-S-T-V-X-Z-Z1	09263	B-C-C2-D-E-F3-H-M-R-S-U
09018	A-B-C2-F-F3-H-N-Q-R-S-V-Z-Z1	09113	A-B-C2-F-F3-H-N-Q-R-S-V-Z-Z1	09175	A-B-C1-C2-E2-F-F1-F3-H1-J-L-M-N-R-R1-S-T-V-W-X-Z1	09264	B-C-E-F3-H-M-R-S-U
09020	B-C-D-E-F3-H-M-R-S-U	09114	B-C-D-E-F3-H-M-R-S-U	09176	A-B-C2-F-F1-F3-J-L-M-N-R-R1-S-T-V-X-Z1	09265	B-C-D-F-F1-H-J-L-M-N-R-S-T-U-V-Z1
09021	B-C-C2-D-E-F3-H-M-R-S-U-Z1	09115	A-B-F-F3-H-N-Q-R-S-V-Z-Z1	09177	B-C-D-E-F3-H-M-R-S-U	09266	A-B-F3-R-S-U-V-Z1
09034	B-C-D-E-F3-H-M-R-S-U	09116	A-B-C2-F-F3-H-N-Q-R-S-V-Z-Z1			09276	A-B-F-F3-I3-L-M-N-R-S-T-V-X-Z-Z1
		09123	B-C-C2-D-E-F3-H-M-R-S-U-Z1				

APO/ FPO/ DPO	See Restrictions	APO/ FPO/ DPO	See Restrictions	APO/ FPO/ DPO	See Restrictions	APO/ FPO/ DPO	See Restrictions
09277	A-B-E-E1-F-F3-I3-L-N-R-S-T-V-X-Z-Z1	09343	A-B-C1-C2-F-F3-M-N-R-R1-S-V-Z1	09502	B-V	09583	B-F-F1-F3-I3-J-R-R1-S-V-V1
09278	A-B-F-F3-I3-L-M-N-R-S-T-V-X-Z-Z1	09348	A-B-C1-E2-F-F1-F3-H1-I3-M-N-R-R1-S-T-V-Z-Z1	09503	B-F-F1-R-R1-V	09586	B-C2-F-F1-F3-R-R1-S-V
09279	A-B-E-E1-F-F3-I3-L-M-N-R-S-T-V-X-Z-Z1	09357	A-B-C1-E2-F-F3-H1-M-R-V-Z1	09504	B-V	09587	B-C2-E2-E3-F-F1-F3-R-R1-S-V-Z1
09283	A-B-E-E1-F-F3-L-M-N-R-S-T-V-X-Z1	09363	A-B-C1-E2-F-F3-H1-M-R-R1-S-V-Z1	09505	B-V	09588	B-F-F1-F3-R-R1-S-V
09285	A-B-C-E-E1-F1-F3-H-I3-L-M-N-R-S-T-V-X-Z-Z1	09365	A-B-C-C1-E2-F-F3-H1-M-N-R-V-Z1	09506	B-V	09589	B-F-F1-F3-R-S-V
09287	B-C2-E1-F1-F3-J-L-N-R-S-T-V-X-Z1	09366	A-B-C-C1-E2-F-F1-F3-H1-M-R-R1-S-V-Z1	09507	B-V	09590	B-V
09289	B-E2-F1-F3-H1-J-L-M-N-R-R1-S-T-U2-V-X-Z1	09401	B-C-C1-C2-F3-M-R-S-U-Z1	09508	B-F-F1-R-R1-V	09591	B-C2-E2-E3-F-F1-F3-R-R1-S-V-Z1
09290	A-B-F1-F3-J-L-M-N-R-S-T-U2-V-X-Z1	09403	B-C-C1-C2-F3-M-R-S-U-Z1	09509	B-F-F1-R-R1-V	09592	B-F-F1-F3-R-R1-S-V
09291	B-C-C1-C2-E2-F1-F3-H1-L-N-R-R1-S-T-V-X-Z1	09410	C2-F-F1-F3-N-R-S-U2	09510	A-B-C1-E2-F-H1-M-R-R1-V-Z1	09593	B-F-F1-F3-R-S-V
09292	A-B-C-C2-E-E2-E3-F1-F3-H-H1-J-L-M-N-R-R1-S-T-V-X-Z1	09421	B-C-C1-C2-F3-M-R-S-U-Z1	09511	B-F-F1-R-R1-V	09594	B-C1-E2-F-F1-F3-R-R1-S-V
09301	A-B-C1-C2-E2-F-F1-F3-H1-I3-L-M-N-R-R1-S-T-U4-V-Z-Z1	09447	B-C-C1-C2-F3-M-R-S-U-V-Z1	09512	B-F-F1-F3-R-R1-S-V	09595	B-F-F1-F3-I3-J-R-R1-S-V-V1-Z1
09302	A-B-C1-C2-F-F1-F3-H-M-N-R-S-V-Z-Z1	09454	B-C-C1-C2-F3-M-R-S-U-V-Z1	09513	B-F-F1-F3-R-R1-S-V-V1	09596	B-F-F1-R-R1-V
09305	A-B-C1-E2-F-F1-F3-H1-I3-M-N-R-R1-S-T-V-Z-Z1	09456	B-C-C1-C2-F3-M-N-R-S-U-V-Z1	09514	B-F-F1-F3-R-R1-S-V-V1	09599	B-F-F1-R-R1-V
09306	A-B-C1-E2-F-F1-F3-H1-R-R1-S-U2-V-Z1	09459	B-C-C1-C2-F3-M-R-S-U-Z1	09517	B-F-F1-F3-R-R1-S-V	09600	B-C-C2-F-F1-F3-R-S-U-Z1
09307	B-C-C2-F-F3-N-R-R1-S-Z1	09461	B-C-C1-C2-F3-M-P-R-S-U-Z1	09520	B-F-F1-F3-R-R1-S-V	09602	B-C-C2-F-F1-F3-N-R-S-U-V
09309	A-B-C-C1-C2-E2-F-F1-F3-H1-M-N-R-R1-S-V-Z1	09463	B-C-C1-C2-F3-M-R-S-U-Z1	09522	B-F-F1-F3-R-S-V	09603	B-C-C2-F-F1-F3-R-S-U-V-Z1
09310	A-B-C1-C2-E2-F-F1-F3-H1-I3-L-M-N-R-R1-S-T-U4-V-Z-Z1	09464	B-C-C1-C2-F3-R-S-U-Z1	09523	B-F-F1-F3-R-R1-S-V	09604	B-C-C2-F-F1-F3-P-R-S-U-V-Z1
09311	A-B-C1-C2-E2-F-F1-F3-H1-I3-L-M-N-R-R1-S-T-U4-V-Z-Z1	09467	B-E-E1-F-F3-J-L-M-N-R-S-T-V-X-Z1	09524	B-F-F1-R-R1-V	09605	B-C-D-F3-H-M-R-S-U-V
09312	A-B-C1-C2-E2-F-F1-F3-H1-I3-L-M-N-R-R1-S-T-U4-V-Z-Z1	09468	B-C-C1-C2-F3-M-R-S-U-Z1	09532	B-F-F1-F3-R-R1-S-V	09606	B-C-D-F3-H-M-R-S-U-V
09313	A-B-C-C1-E2-F-F1-F2-F3-H1-R-R1-S-V-Z1	09469	B-C-C1-C2-F3-R-S-U-Z1	09533	B-V	09608	B-C-F-F3-N-R-S-U-V-Z1
09315	A-B-C1-E2-F-F3-N-R-R1-S-V-Z1	09470	B-C-C1-C2-F3-M-R-S-U-Z1	09534	B-F-F1-F3-R-R1-S-V	09609	B-C-C2-F-F3-N-R-S-U-V-Z1
09316	A-B-C1-E2-F-F1-F3-H1-I3-M-N-R-R1-S-T-V-Z-Z1	09487	A-B-C-C1-C2-E2-F1-F3-I3-L-M-N-R-R1-S-T-V-W-X-Z-Z1	09541	A-B-C-F-F3-M-N-S-V-Z1	09610	B-C-C2-F-F1-F3-M-R-S-U-V-Z1
09321	A-B-C1-C2-E2-F-F3-H1-M-N-R-R1-S-V-Z1	09488	A-B-C-C1-C2-E2-F3-J-L-M-N-S-T-V-W-X-Z1	09542	A-B-C-F-F3-M-N-S-V-Z1	09613	B-C-F-F3-N-R-S-U-V
09330	A-B-C1-C2-D-E-E2-F-F1-F3-H-H1-M-R-R1-S-V-Z1	09489	A-B-C-C1-C2-E2-F1-F3-L-M-N-R-R1-S-T-V-W-X-Z1	09544	A-B-C-F-F3-M-N-S-V-Z1	09614	A-B-C1-C2-E2-F-F1-F3-H1-J-L-M-N-R-R1-T-V-W-Z1
09333	A-B-C-C1-E2-F-F1-F3-H1-I3-M-N-R-R1-S-V-V1-Z-Z1	09490	A-B-C1-C2-E2-F-F1-F3-H1-J-L-M-N-R-R1-S-T-V-X-Z1	09545	A-B-C-F-F3-M-N-S-V-Z1	09618	B-C-C2-F-F3-R-S-U-Z1
		09491	A-B-C1-C2-E2-F1-F3-H1-J-L-M-N-R-R1-S-T-V-Z1	09550	B-F-F1-R-R1-V	09620	B-C-C2-F-F3-R-S-U-V-Z1
		09494	B-C-C1-C2-F3-M-R-S-U-Z1	09554	B-F-F1-R-R1-V	09621	B-C-F-F3-R-U-Z1
		09498	B-C1-C2-F-F1-F3-J-L-N-R-R1-T-V-Z1	09556	B-F-F1-R-R1-V	09622	B-C-C2-F-F3-R-S-U-Z1
		09501	B-V	09564	B-F-F1-R-R1-V	09623	B-C-C2-F-F3-R-S-U-V-Z1
				09565	B-F-F1-F3-R-R1-S-V	09624	B-C-C2-F-F1-F3-I3-L-N-R-R1-T-U-V-Z-Z1
				09566	B-C2-E2-E3-F-F1-F3-R-R1-S-V-Z1	09625	B-C-C2-F-F3-N-R-S-U-Z1
				09567	B-C2-E2-E3-F-F1-F3-R-R1-V-Z1	09627	B-C-C2-F-F3-R-S-U-V-Z1
				09568	B-V	09630	B-C-F-F3-R-S-U-V
				09569	B-C2-E2-E3-F-F1-F3-R-R1-V-Z1	09633	B-C-D-F-F1-F3-M-R-S-U-U1-U2-U3-V-Z1
				09570	A-B-F-F1-F3-R-R1-S-V	09634	A-B-C2-F-F3-M-N-R-S-V
				09573	B-C2-E2-E3-F-F1-F3-R-R1-S-V-Z1		
				09574	B-F-F1-R-R1-V		
				09575	B-F-F1-R-R1-V		
				09576	B-F-F1-R-R1-V		
				09577	B-F3-S-V		
				09578	B-F-F1-F3-R-R1-S-V-Z1		
				09579	B-F-F1-R-R1-V		
				09581	B-F-F1-F3-R-R1-S-V		
				09582	B-C2-F-F1-F3-R-R1-S-V		

APO/ FPO/ DPO	See Restrictions	APO/ FPO/ DPO	See Restrictions	APO/ FPO/ DPO	See Restrictions	APO/ FPO/ DPO	See Restrictions
09636	B-C-C2-F-F3-R-S-U-V-Z1	09729	B-C-C2-F-F3-N-R-R1-S-U-V-Z1	09789	A-B-C2-F-F3-N-R-S-V-Z1	09827	A-B-F-F1-J-L-M-N-R-T-V-Z1
09642	B-C2-F-F1-F3-J-L-M-N-R-T-U-V	09730	A-B-C1-C2-F-F1-F3-J-L-M-N-R-R1-T-V-Z1	09801	A-B-C1-E2-F-F3-H1-M-N-R-R1-S-V-Z1	09828	A-B-C1-C2-F-F1-F3-I3-L-N-R-R1-T-V-Z1
09643	B-C-C2-F3-M-R-S-U-V-Z1	09731	A-B-C1-C2-F-F1-F3-J-L-M-N-R-R1-T-V-Z1	09802	A-B-C-C2-D-F-F1-F3-H-H1-I3-L-M-N-R-R1-S-T-V-W-Z1	09829	B-C-N-R-V-Z1
09645	B-C-C1-E1-E2-F-F1-F3-M-R-S-U-X-Z1	09732	B-F-F3-N-S-V-Z1	09803	A-B-C-C2-E-E2-E3-F1-F3-H-H1-J-M-N-R-R1-S-U-V-Z1	09830	B-C-F-F1-F3-J-L-M-N-R-R1-S-T-V-Z1
09647	B-C2-F1-F3-M-N-R-S-U-Z1	09733	B-F-F3-N-R-S-V-Z1	09804	A-B-C2-F-F1-F3-M-N-R-S-V-Z1	09831	B-C1-C2-F-F1-F3-J-L-N-R-R1-T-V-Z1
09648	B-C2-F3-N-R-S-U-V-Z1	09734	A-B-C-C1-C2-F-F1-F3-I3-J-L-M-N-R-R1-T-V-Z1	09805	B-C-C2-E2-E3-F-F1-F3-R-R1-S-Z1	09832	B-C1-E2-F1-F3-N-R-S-V-Z1
09649	B-C2-F3-N-R-S-U-Z1	09735	B-F3-N-R-S-V-Z1	09807	A-B-C1-E2-F-F1-F3-H1-I3-M-N-R-R1-S-T-V-Z1	09833	B-C1-E2-F1-F3-N-R-S-V-Z1
09701	A-B-C1-C2-F-F1-F3-J-L-M-N-R-R1-T-V-Z1	09736	A-B-C1-F-F1-F3-J-L-M-N-R-R1-T-V-Z1	09808	A-B-C1-C2-E2-F-F1-F3-H-H1-J-L-N-R-R1-T-V-Z1	09834	B-C-C2-E2-E3-F-F1-F3-R-R1-S-U-Z1
09702	B-C-C1-F1-F3-M-R-R1-S-U	09737	A-B-C1-C2-F-F1-F3-I3-J-L-M-N-R-R1-T-V-W-Y-Z1	09809	B-C1-C2-E3-F-F1-F3-J-L-N-T-V-Z1	09836	A-B-C1-C2-F-F1-F3-J-L-M-N-R-R1-V-Z1
09704	B-C-F-F1-F3-R-R1-S-U2-V	09738	A-B-C1-C2-F-F1-F3-J-L-M-N-R-R1-T-V-Z1	09810	A-B-C2-F-F1-F3-N-R-S-V-Z1	09837	B-E2-E3-F1-F3-R-S-V-Z1
09705	B-C-C1-F1-F3-M-R-R1-S-U	09739	A-B-C1-C2-F-F1-F3-J-L-M-N-R-R1-T-V-Z1	09811	A-B-C-C2-E-E2-E3-F1-F3-H-H1-J-M-N-R-R1-S-U-V-Z1	09838	B-C-C2-E2-E3-F-F1-F3-R-S-U-Z1
09706	B-C-C2-F3-M-N-R-S-U-V-Z1	09741	A-B-C1-C2-E2-F-F1-F3-H1-J-L-M-N-R-R1-T-V-W-Y-Z1	09812	B-E2-E3-F-F1-I-J-L-N-R-T-U-V-Z1	09841	A-B-F3-N-R-S-U-Z1
09707	B-C2-F-F1-F3-J-L-M-N-R-R1-T-V-Z1	09742	A-B-C2-F-F1-F3-J-L-M-N-R-S-T-V-Z1	09813	A-B-C1-C2-E2-E3-F1-F3-J-L-N-R-R1-T-V-Z1	09842	A-B-C1-C2-F-F1-F3-J-L-N-R-R1-T-V-Z1
09708	B-C-C1-F1-F3-M-R-R1-S-U	09743	A-B-C2-F-F3-H-N-Q-R-S-V-Z1	09814	B-C2-E2-E3-F-F1-F3-I3-J-L-N-R-R1-T-V-Z1	09844	A-B-C1-C2-F-F1-F3-J-L-M-N-R-R1-T-V-Z1
09709	B-C1-C2-E2-F-F1-F3-H-H1-J-L-N-R-R1-T-V-Z1	09744	A-B-C1-C2-F-F1-F3-J-L-M-N-R-R1-T-V-Z1	09815	A-B-C-C2-E-E2-E3-F1-F3-H-H1-J-M-N-R-R1-S-U-V-Z1	09845	A-B-C1-C2-E3-F-F1-F3-J-L-M-N-R-R1-T-V-Z1
09710	B-C-C1-F-F1-J-L-M-N-R-R1-T-U-V-Z1	09745	A-B-C2-F-F1-F3-M-N-R-R1-S-V-Z1	09816	A-B-C1-C2-E2-E3-F1-F3-J-L-N-R-R1-T-V-Z1	09846	A-B-C1-C2-F-F1-F3-J-L-N-R-R1-T-V-Z1
09712	A-B-C2-F-F3-H-R-S-U-V-Z1	09748	A-B-C1-C2-F-F1-F3-J-L-M-N-R-R1-T-V-Z1	09817	A-B-C1-C2-E2-E3-F1-F3-H-H1-J-L-M-N-R-R1-T-V-Z1	09847	B-C-C2-F-F1-F3-J-L-M-N-R-R1-S-T-V-Z1
09714	B-C-C1-F1-F3-M-R-R1-S-U	09749	A-B-F-F3-H-N-R-S-U-V-Z1	09818	A-B-C-C2-F-F3-M-R-S-V-Z1	09848	A-B-C2-F-F3-M-R-S-V-Z1
09715	B-F-F1-J-L-M-N-R-T-V-Z1	09750	A-B-C1-C2-F-F1-F3-J-L-M-N-R-R1-T-V-Z1	09819	A-B-C-C1-C2-E2-F-F1-F3-H-H1-M-R-R1-S-V-Z1	09853	B-C1-C2-E2-F-F1-F3-H1-N-R-R1-S-U2-V-Z1
09716	B-C-C2-F-F1-F3-J-L-M-N-R-R1-T-V-Z1	09751	B-C-D-E-F3-H-M-R-S-U	09820	A-B-C2-F-F1-F3-H-H1-J-L-M-N-R-R1-T-V-Z1	09854	A-B-C1-C2-F-F1-F3-J-L-N-R-R1-S-T-V-Z1
09717	A-B-C2-F3-M-R-S-V-W-Z1	09752	B-C-D-F1-F3-H-R-S-U	09821	A-B-C-C2-F-F3-N-R-S-V-Z1	09855	A-B-C-C1-C2-E2-F-F1-F3-H1-M-R-R1-S-U2-V-Z1
09718	B-F-F1-J-L-M-N-R-T-U-V-Z1	09753	A-B-F-F3-N-R-S-V-Z1	09822	A-B-C-C2-F-F3-M-R-S-V-Z1	09856	B-C-C1-C2-F-F1-F3-H-H1-J-L-M-N-S-T-V-Z1
09719	B-C-C2-D-F3-M-R-S-U-V-Z1	09754	A-B-C2-F-F3-H-L-N-Q-R-S-V-Z1	09823	A-B-C1-C2-F-F1-F3-J-L-M-N-R-R1-T-V-Z1	09857	A-B-C2-E2-F-F1-F3-I3-L-M-N-R-R1-S-T-V-Z1
09720	B-C2-F3-M-R-S-U-V-Z1	09755	A-B-C-C1-C2-D-F-F1-F3-J-L-M-N-Q-R-R1-S-T-V-Z1	09824	A-B-C-C2-F-F3-M-R-S-V-Z1	09858	A-B-C-C1-C2-E2-E3-F1-F3-H-H1-J-M-N-R-R1-S-U-V-Z1
09722	A-B-C2-F-F3-H-N-Q-R-S-V-Z1	09759	A-B-C-C1-C2-E2-F-F1-F3-J-L-N-R-R1-T-V-Z1	09825	A-B-C1-C2-F-F1-F3-J-L-M-N-R-R1-T-V-Z1	09859	B-C-C1-C2-E2-E3-F-F1-F3-H1-R-R1-S-U-Z1
09723	B-C2-F-F1-F3-J-L-M-N-R-R1-T-V-Z1	09761	B-C2-F-F1-F3-M-R-R1-S-V-Z1	09826	A-B-C1-C2-E1-E2-E3-F-F1-F3-J-L-M-N-R-R1-T-V-W-Z1	09860	A-B-C2-F-F1-F3-J-L-M-N-R-R1-S-T-V-Z1
09724	B-C-C1-F1-F3-M-R-R1-S-U	09762	A-B-C2-E3-F-F1-F3-J-L-N-R-R1-T-V-Z1			09862	A-B-C-C2-F-F1-F3-I3-L-M-N-R-R1-S-T-V-X-Z1
09725	A-B-C2-F-F3-H-N-Q-R-S-V1-Z1	09769	A-B-C-C1-C2-F-F1-F3-J-L-M-N-R-R1-T-V-Z1			09864	A-B-C-C1-C2-E2-F1-F3-L-M-N-R-R1-S-T-V-W-Z1
09726	B-F-F1-J-L-M-N-R-T-U-V-Z1	09777	A-B-C-C1-C2-E1-F-F1-F3-J-L-M-N-R-R1-T-V-Z1			09865	A-B-F3-R-S-U-V-Z1
09727	A-B-C1-C2-F-F1-F3-J-L-M-N-R-R1-T-V-Z1	09780	A-B-C2-F-F3-H-N-R-S-V				
09728	A-B-C-C1-C2-F-F1-F3-J-L-N-R-R1-T-V-Z1						



APO/ FPO/ DPO	See Restrictions	APO/ FPO/ DPO	See Restrictions	APO/ FPO/ DPO	See Restrictions	APO/ FPO/ DPO	See Restrictions
09867	A-B-C-C1-C2-E2-F1-F3-L-M-N-R-R1-S-T-V-W-Z1	34008	B-C1-C2-D-E1-F-F1-H-H1-J-L-M-N-R-R1-T-V-Z1	34078	B-F1-F3-N-R-S-V-Z1	96269	A-B-F1-F2-F3-R-S-U-Z1
09868	A-B-E1-E2-E3-F1-F3-M-N-R-S-U-V-Z1	34011	B-C1-C2-E2-F-F1-F3-J-L-M-N-R-R1-T-V-Z1	34080	B-F-F1-R-R1-V	96271	A-F-F3-M-P-R-S-U
09869	A-B-C1-C2-E2-F1-F3-L-M-N-R-R1-S-T-V-W-Z1	34020	B-C1-C2-F-F1-F3-J-L-M-N-R-R1-T-V-Z1	34081	B-F-F1-R-R1-V	96273	A-B-F-F1-F3-M-R-S-U
09870	A-B-C1-C2-E2-F-F1-F3-H1-I3-L-M-N-R-R1-S-T-U4-V-Z-Z1	34021	B-C1-C2-F-F1-F3-J-L-M-N-R-R1-T-V-Z1	34082	B-F-F1-R-R1-V	96275	A-B-F-F1-F3-M-R-S-U
09873	A-B-C1-C2-E2-F-F1-F3-H1-I3-L-M-N-R-R1-S-T-U-U4-V-Z-Z1	34022	B-C1-C2-F-F1-F3-J-L-M-N-R-R1-T-V-Z1	34083	B-F-F1-R-R1-V	96276	A-B-C-F1-R
09874	A-B-C1-C2-E2-F-F1-F3-H1-I3-L-M-N-R-R1-S-T-U-U4-V-Z-Z1	34023	B-C1-C2-F-F1-F3-J-L-M-N-R-R1-T-V-Z1	34084	B-F-F1-R-R1-V	96278	A-B-C-F1-F3-R-S-U
09875	A-B-C1-C2-E2-F-F1-F3-H1-I3-L-M-N-R-R1-S-T-U-U4-V-Z-Z1	34024	B-C1-C2-F-F1-F3-J-L-M-N-R-R1-T-V-Z1	34085	B-C-C1-C2-E2-E3-F-F1-F3-H1-J-R-R1-S-T-V-V1	96283	A-B-F-F1-F3-S-U
09877	A-B-C-C2-E-E2-E3-F1-F3-H-H1-J-M-N-R-R1-S-U-V-Z1	34025	B-F-F1-F3-J-L-M-N-R-R1-T-V-Z1	34086	B-C-C1-C2-E2-E3-F-F1-F3-H1-J-R-R1-S-T-V-V1	96284	A-B-F-F1-F3-R-S-U
09880	A-B-C1-C2-E2-F-F1-F3-H1-J-L-N-R-R1-S-T-U-V-Z1	34030	B-C1-C2-F-F1-F3-J-L-M-N-R-R1-T-V-Z1	34087	B-E2-F-F1-F3-R-R1-S-V	96297	A-B-F-F1-F3-R-S-U
09889	B-E2-F-H1-N-R-R1-U2-V-Z1	34031	B-C1-C2-F-F1-F3-J-L-M-N-R-R1-T-V-Z1	34088	B-F-F1-R-R1-V	96300	A-B-F3-M-R-S-V-Z1
09892	A-B-C1-C2-E2-F-F1-F3-J-L-M-N-R-R1-T-V-Z1	34032	B-C1-C2-F-F1-F3-J-L-M-N-R-R1-T-V-Z1	34089	B-F-F1-R-R1-S-V	96301	A-B-F-F3-M-N-R-S-U2-W
09895	A-B-C1-C2-E2-F-F1-F3-J-L-M-N-R-T-V-W-Z1	34033	B-C1-C2-F-F1-F3-I3-L-M-N-R-T-V-Z-Z1	34090	B-F-F1-R-R1-V	96303	B-C1-C2-F-F1-H-J-L-M-N-T-V-W-Z1
09898	B-C-C1-C2-E2-F-F1-F2-H1-N-R-R1-S-U2-V-Z1	34034	B-C1-C2-F-F1-F3-I3-L-M-N-R-R1-T-V-Z-Z1	34091	B-E2-E3-F-F1-F3-R-R1-S-V-Z1	96306	B-F-F1-F2-F3-H-M-R-S-W-Z1
09902	A-B-C1-C2-E2-F-F3-H1-M-R-R1-S-V-Z1	34035	B-C1-C2-F-F1-F3-H-J-L-M-N-R-R1-T-V-Z1	34092	B-F-F1-F3-R-R1-S-V	96310	B-F3-M-R-S-W
09903	B-C1-E2-F1-F3-S-V-Z1	34036	B-C1-C2-F-F1-F3-J-L-M-N-R-R1-T-V-Z1	34093	B-F-F1-F3-R-R1-S-V	96311	B-F3-M-R-S-W
09904	B-C1-E2-F1-F3-S-V-Z1	34037	B-C-C1-C2-F-F1-F3-H-J-L-M-N-R-R1-T-V-Z1	34094	B-F-F1-F3-R-R1-S-V	96315	B-F-F1-F3-H-M-R-S-W
09908	A-B-C2-F-F1-F3-N-R-R1-S-V-Z1	34050	B-V	34095	B-F-F1-R-R1-V	96319	B-C-F3-M-R-S-V-W
09909	A-B-C2-F-F1-F3-N-R-R1-S-V-V1-Z1	34051	B-V	96201	A-B-F-F1-F3-M-R-S-U	96321	B-F-F1-F2-F3-H-M-R-S-W-Z1
09974	B-F1-F3-J-L-M-N-R-S-T-U2-V-X-Z1	34052	B-V	96202	A-B-F-F1-F3-M-R-S-U	96322	B-F-F1-F2-F3-H-M-R-S-W-Z1
09975	B-F1-F3-I3-L-M-N-R-S-T-U2-V-X-Z-Z1	34053	B-V	96203	A-B-F-F1-F3-M-R-S-U	96326	B-C-F-F3-M-R-S-W
09976	B-F1-F3-J-L-M-N-R-S-T-U2-V-X-Z1	34054	B-V	96204	A-B-F-F1-F3-M-R-S-U	96328	B-C-F3-M-R-S-W
09977	B-F1-F3-J-L-M-N-R-S-T-U2-V-X-Z1	34055	B-C1-C2-F-F1-F3-J-L-M-N-R-R1-T-V-Z1	96205	A-B-F-F1-F3-M-R-S-U	96331	A-B-F-F1-F3-J-L-M-N-R-S-U2-W
34001	A-B-C1-C2-F-F1-F3-J-L-M-N-R-R1-S-T-V-Z1	34058	<b>B-C2-F-F1-F2-F3-R-R1-S-V-Z1</b>	96206	A-B-F-F1-F3-M-R-S-U	96336	B-C-F3-M-R-S-V-W
34002	B-C1-C2-F-F1-F3-J-L-M-N-R-R1-T-V-Z1	34060	B-C1-C2-E2-F-F1-F3-J-L-M-N-R-R1-T-V-Z1	96207	A-B-F-F1-F3-M-R-S-U-V	96337	B-F-F1-F3-M-R-R1-S-W
34004	B-C1-C2-F-F1-F3-J-L-M-N-R-R1-T-V-Z1	34066	B-C1-C2-F-F1-F3-I3-J-L-M-N-R-R1-S-T-V-X-Z-Z1	96208	A-B-F-F1-F3-M-R-S-U	96338	A-B-F-F3-M-R-S-U2-W
34007	B-F-F1-H-J-M-N-R-R1-V-Z1	34067	B-C1-C2-F-F1-F3-J-L-M-N-R-R1-S-T-V-X-Z1	96209	A-B-C1-C2-F-F1-J-L-M-N-T-U-V-Z1	96339	A-B-F-F3-M-R-S-U2-W
		34068	B-C1-C2-F-F1-F3-J-L-M-N-R-R1-S-T-V-X-Z1	96210	A-B-C1-C2-F-F1-F3-I3-L-M-N-R-R1-T-V-Z-Z1	96343	A-F-F3-M-P-R-S-U2
		34069	B-C1-C2-F-F1-F3-I3-J-L-M-N-R-R1-S-T-V-X-Z-Z1	96212	B-F-F1-F2-H-M-W-Z1	96346	B-F-F1-F2-F3-H-M-R-S-W-Z1
				96213	A-B-C-F1-F3-R-S-U	96347	B-C2-F-F1-F2-F3-H-M-R-S-W-Z1
				96214	A-B-C-F1-F3-R-S-U	96349	B-C2-F-F1-F2-F3-H-M-R-S-W-Z1
				96218	A-B-F-F1-F3-M-R-S-U	96350	B-F-F1-F2-F3-H-M-R-S-W-Z1
				96224	A-B-F-F1-F3-M-R-S-U	96351	B-C2-F-F1-F2-F3-H-M-R-S-W-Z1
				96251	A-B-F-F1-F3-M-R-S-U	96362	B-F-F1-F2-M-W-Z1
				96257	A-B-F-F1-F3-S-U	96365	B-C-F3-M-R-S-V-W
				96258	A-F-F3-M-P-R-S-U	96367	B-C-F3-L-M-R-S-W
				96260	A-B-F-F1-F3-M-R-S-U	96368	B-C-F3-M-R-S-W
				96262	A-B-F-F1-F3-R-S-U-V-Z1	96370	B-F-F1-F2-H-M-W-Z1
				96264	A-B-C-F1-F3-R-S-U	96371	B-F-F3-M-R-S-W
				96266	A-B-C-F1-F3-R-S-U	96372	B-M-W
						96373	B-M-W
						96374	B-M-W
						96375	B-F3-M-R-S-W
						96376	B-F3-M-R-S-W

APO/ FPO/ DPO	See Restrictions	APO/ FPO/ DPO	See Restrictions	APO/ FPO/ DPO	See Restrictions	APO/ FPO/ DPO	See Restrictions
96377	B-F-F3-M-R-S-W	96530	A-B-C1-C2-F-F1-H-H1-J-L-M-N-R-R1-S-T-V-Z1	96598	B-F3-I3-N-R-S-V-V1	96650	B-F-F1-R-R1-V
96378	B-M-W			96599	B-F3-N-R-S-V	96657	B-F-F1-F3-R-R1-S-V
96379	B-F3-M-R-S-W			96601	B-V	96660	B-F-F1-F3-R-R1-S-V
96380	B-F3-M-R-S-W	96531	A-B-C-F-F1-F3-H-M-N-R-S-U-V	96602	B-V	96661	B-F-F1-F3-R-R1-S-V
96382	B-F-F3-M-R-S-W			96603	B-V	96662	B-F-F1-F3-R-R1-S-V
96384	B-F-F3-M-R-S-W	96532	A-B-C1-C2-F-F1-H-J-L-M-N-R-R1-S-T-V-Z1	96604	B-V	96663	B-F-F1-F3-R-R1-S-V-V1
96385	B-F-F3-M-R-S-W	96534	A-B-F-F1-F2-F3-S-U-Z1	96605	B-V+B559	96664	B-V
96386	B-F3-M-S-W			96606	B-F3-R-S-V	96665	B-V
96387	B-F3-M-R-S-W	96535	A-B-C1-C2-F-F1-J-L-M-N-R-R1-S-T-V-Z1	96607	B-V	96666	B-F3-R-S-V
96388	B-F3-M-R-S-W			96608	B-E2-F-H1-R1-U2-V-Z1	96667	B-F-F1-F3-R-R1-S-V
96389	B-M-W	96537	B-V-Z1			96668	B-F-F1-R-R1-V
96401	B-C-F-F3-N-R-S-V-V1-Z1	96540	B-F1-F2-F3-S-V-Z1	96609	B-E2-F-H1-R1-U2-V-Z1	96669	B-F-F3-R-R1-S-V
96502	A-C1-F-F1-F3-M-N-Q-R-R1-S-T-U2-V	96542	B-F-F1-F2-F3-S-V-Z1	96610	B-E2-F-H1-R1-U2-V-Z1	96670	B-V
96504	A-B-C-C1-C2-F-F1-F3-I3-L-M-N-R-R1-T-V-W-Z-Z1	96543	B-F-F1-F2-F3-P-S-V-Z1	96611	B-E2-F-H1-R1-U2-V-Z1	96671	B-F-F1-F3-R-R1-S-V
		96548	A-B-F-F1-F3-H-M-R-S-U			96672	B-F-F1-F3-R-R1-S-V
96505	A-B-C-C1-C2-F-F1-F3-I3-L-M-N-R-R1-S-T-V-W-Z-Z1	96549	A-B-C1-C2-F-F1-H-J-L-M-N-R-R1-S-T-V-Z1	96612	B-V	96673	B-F3-S-V
				96613	B-V	96674	B-F-F1-F3-R-R1-S-V
		96550	A-B-H-M-N-U-V-Z1	96615	B-F-F1-R-R1-V	96675	B-F-F1-F3-R-R1-S-V
96507	A-B-C1-C2-F-F1-H-J-L-M-N-T-V-Z1	96551	A-B-C1-C2-F-F1-H-J-L-M-N-R-R1-S-T-V-Z1	96616	B-C2-F-F1-F3-R-R1-S-V	96677	B-F-F1-F3-R-R1-S-V
						96678	B-F-F1-F3-R-R1-S-V
96510	B-I3-N-V	96552	B-Z1	96619	B-F1-F3-R-S-V	96679	B-F-F1-R-R1-V
96511	B-I3-N-V	96553	A-B-F-F1-H-M-N-R-U	96620	B-F-F1-F3-R-R1-S-V	96681	B-V
96515	B-C-D-E1-F-F1-F3-H-H1-M-N-R-S-T-Z1	96554	A-B-C1-C2-F-F1-H-J-L-M-N-R-R1-S-T-V-Z1	96628	B-F-F1-F3-R-R1-S-V	96682	B-V
				96629	B-F-F1-F3-R-R1-S-V	96683	B-F-F1-F3-R-R1-S-V
96516	B-C-D-E1-E2-F-F1-F3-H-H1-M-N-R-S-T-Z1	96555	A-B-F-F3-M-R-S-V	96632	B-F-F1-F3-R-R1-S-V	96686	B-V
		96557	A-B-F-F3-M-R-S-V	96633	B-V	96691	B-F-F1-F3-R-R1-S-V
		96562	A-B-C1-C2-D-E2-E3-F-F1-H-H1-I3-L-M-N-R-R1-S-T-V-Z-Z1	96641	B-V	96692	B-F-F1-F3-R-R1-S-V
96517	B-C-D-E1-E2-F-F1-F3-H-H1-M-N-R-T-U-V-Z1			96642	B-V	96693	E2-F-F3-R-R1-S-V
		96577	A-B-F-F3-H-M-N-R-S-U	96643	B-F-F1-F3-R-R1-S-V	96694	B-E2-F-F1-F3-I3-J-R-R1-S-V-V1-Z
96520	B-F-N-U3-V			96644	B-V	96695	B-F-F1-R-R1-V
96521	B-C1-C2-F-F1-J-L-M-N-R-R1-S-T-V-Z1	96578	B-F1-F3-H-J-N-R-S	96645	B-V	96696	B-F-F1-R-R1-V
		96595	B-F-F3-R-S-V-Z1	96649	B-F-F1-F3-R-R1-S-V	96698	B-V

## RESTRICTIONS

## LEGEND

PS Form 2976, *Customs — CN 22 (Old C 1) and Sender's Declaration* (green label)

PS Form 2976-A, *Customs Declaration and Dispatch Note*

PS Form 2976-B, *Priority Mail Express International Shipping Label and Customs Form*

ATF	= Bureau of Alcohol, Tobacco, Firearms, and Explosives
Box C	= Department of State (DOS) contractor personnel
Box R	= Retired military personnel
DPO	= Diplomatic Post Office
MPO	= Military Post Office
PACT	= Prevent All Cigarette Trafficking Act
PAL	= Parcel Airlift
PMEMS	= Priority Mail Express Military Service
PUB 52	= Publication 52, <i>Hazardous, Restricted, and Perishable Mail</i>
SAM	= Space Available Mail
USDA	= United States Department of Agriculture

**Note:** Mail order catalogs are prohibited as SAM or PAL mail.

**A.** Securities, currency, or precious metals, including in their raw, unmanufactured state, are prohibited. Official Mail shipments are exempt from this restriction.

**A1.** Reserved for future use.

**A2.** Reserved for future use.

**B.** Other than for PMEMS and the exceptions listed below, a customs declaration PS Form 2976 or PS Form 2976-A is required for all items weighing 16 ounces or more, and for all items (regardless of weight) containing potentially dutiable mail contents (e.g., merchandise or goods) addressed to or from this ZIP Code. Other than the exceptions listed below, all PMEMS mailpieces (regardless of mail contents or weight) addressed to or from this ZIP Code must bear a properly completed PS Form 2976-B. The surface area of the address side of the mailpiece must be large enough to contain the applicable customs declaration. The following exceptions apply to known mailers, who for this purpose are defined as follows:

- Business mailers who enter volume mailings through business mail entry units or other bulk mail acceptance locations, pay postage through advance deposit accounts, use permit imprints for postage payment, and submit completed postage statements at the time of entry that certify that the mailpieces contain no dangerous materials that are prohibited by postal regulations. Such business mailers are exempt from providing customs documentation on non-dutiable letters and printed matter.
- All federal, state, and local government agencies whose mailings are regarded as "Official Mail." Such agencies are exempt from providing customs documentation, except for any items addressed to an MPO or DPO to which restriction "B2" applies.

**B2.** All federal, state, and local government agencies must complete customs documentation when sending potentially dutiable mail addressed to or from this MPO or DPO.

**C.** Cigarettes and other tobacco products, including tobacco leaves, chewing and pipe tobacco, snuff, and cigars are prohibited, including those that are authorized in Publication 52 under PACT.

**C1.** Obscene and horror articles, images, prints, paintings, cards, films, videotapes, comic books, etc., are prohibited.

**C2.** E-cigarettes and related products (e.g., nicotine liquids, e-liquids, parts, or supplies) are prohibited.

**D.** Coffee is prohibited.

**E.** Medicines (prescription, over-the-counter, vitamins, and supplements) are prohibited when mailed to individuals for human or animal use. This prohibition does not apply when medicines are sent as Official Mail only between specifically designated agencies such as pharmaceutical distributors, hospitals, clinics, and pharmacies.

**E1.** Mailers are responsible to ensure that all medicines and vaccines conform to host nation laws.

**E2.** Any matter depicting nude or seminude persons, pornographic, or sexual items are prohibited. Non-authorized political materials are prohibited. Religious materials contrary to the Islamic faith are prohibited in bulk quantities, but individual items for the personal use of the addressee are permissible.

**E3.** Radio transceivers, cordless/cellular telephones, global positioning systems, scanners, base stations, and handheld transmitters are prohibited.

**F.** Firearms of any type are prohibited, except firearms mailed to or by official U.S. government agencies. This restriction does not apply to firearms mailed from this MPO ZIP Code, provided ATF and USPS regulations are met. Antique firearms do not require an ATF form.

**F1.** Weapons of any type are prohibited.

**F2.** Mailing firearms to or from this MPO ZIP Code is restricted to one shotgun and one single shot .22 caliber rifle per individual.

**F3.** Replica weapons and inert explosive devices (such as grenades) and weapons parts are prohibited.

**G.** Parcels of any class are prohibited.

**H.** Meats, including preserved meats, bones, skin, hair, feathers, horns or hoofs of hoofed animals, and wool samples whether hermetically sealed or not, are prohibited.

**H1.** Pork or pork by-products are prohibited.

**I.** Reserved for future use.

**I1.** Reserved for future use.

**I2.** Reserved for future use.

**I3.** Mail of all classes must fit in a mail sack. Mail may not exceed the following dimensions:

- Maximum length 27 inches.
- Maximum width 14 inches.
- Maximum height 14 inches.

**J.** Standard Post and Parcel Select parcels may not exceed 108 inches in length and girth combined.

**K.** Reserved for future use.

**L.** All Official Mail is prohibited.

**M.** Fruits, vegetables, live animals, and live plants are prohibited.

**N.** Registered Mail service is prohibited.

**O.** Reserved for future use.

**P.** Official Mail only.

**Q.** Mail may not exceed 66 pounds, and size is limited to 42 inches maximum length and 72 inches maximum length and girth combined.

**R.** All alcoholic beverages, including those available under Publication 52, Part 421, are prohibited.

**R1.** Materials used in the production of alcoholic beverages (i.e., distilling material, hops, malts, yeast, etc.) are prohibited.

**S.** Synthetic cannabinoids used to stimulate the central nervous system commonly known as "synthetic marijuana," "K2," or "Spice" are prohibited.

**T.** Mailings of household shipments and case lots of food to or from an MPO require military transportation office approval prior to mailing. Mailings to or from a DPO require pre-approval from the Diplomatic Pouch and Mail Director.

**U.** Mail addressed to Retirees (Box R) is limited to 16 ounces and up to a 90-day supply of TRICARE medications. This restriction does not apply to mail endorsed "Free Matter for the Blind or Handicapped."

**U1.** Mail is limited to First-Class Mail items, including audio and video media, weighing 13 ounces or less. This limitation does not apply to Official Mail.

**U2.** Retirees (Box R) are not authorized mail service.

**U3.** Reserved for future use.

**U4.** Mail addressed to Box C is limited to 2 lbs.

**V.** PMEMS is not available.

**V1.** Electronic Delivery status information for Extra Services is not available on *USPS.com*. Manual record of delivery may be available upon request.

**W.** Hermetically sealed packages of meat products bearing USDA certification, such as dried beef, salami, and sausage, may be mailed. 200 grams of tobacco per parcel are permitted duty free.

**X.** Cremated remains are prohibited.

**Y.** Mail is limited to First-Class Mail and Priority Mail items only. This restriction also applies to Official Mail.

**Z.** No outside pieces (OSPs).

**Z1.** The following restriction is applicable only to International Service Centers (ISC)/Exchange Offices. An Anti-Pilferage Seal (Item No 0817E or 0818A) is required on all pouches and sacks.

— *International Network Operations,  
Global Business, 1-27-22*

## Thrift Savings Plan Fact Sheet

ANNUAL RETURNS	G Fund	F Fund	U.S. Aggregate Index	C Fund	S&P 500 Stock Index	S Fund	Dow Jones U.S. Completion TSM Index	I Fund	EAFE Stock Index
2015	2.04	0.91	0.55	1.46	1.38	-2.92	-3.42	-0.51	-0.81
2016	1.82	2.91	2.65	12.01	11.96	16.35	15.75	2.10	1.00
2017	2.33	3.82	3.54	21.82	21.83	18.22	18.12	25.42	25.03
2018	2.91	0.15	0.01	-4.41	-4.38	-9.26	-9.57	-13.43	-13.79
2019	2.24	8.68	8.72	31.45	31.49	27.97	27.94	22.47	22.01
2020	0.97	7.50	7.51	18.31	18.40	31.85	32.17	8.17	7.82
2021	1.38	-1.46	-1.54	28.68	28.71	12.45	12.35	11.45	11.26

MONTHLY RETURNS	G Fund	F Fund	U.S. Aggregate Index	C Fund	S&P 500 Stock Index	S * Fund	Dow Jones U.S. Completion TSM Index	I * Fund	EAFE Stock Index
<b>2021</b>									
Jan	0.07	-0.71	-0.72	-1.01	-1.01	2.85	2.84	-1.09	-1.07
Feb	0.08	-1.45	-1.44	2.76	2.76	5.21	5.19	2.26	2.24
Mar	0.11	-1.23	-1.25	4.38	4.38	-0.39	-0.40	2.35	2.30
Apr	0.13	0.82	0.79	5.33	5.34	4.23	4.22	3.09	3.01
May	0.13	0.34	0.33	0.69	0.70	-0.66	-0.66	3.61	3.26
June	0.12	0.74	0.70	2.33	2.33	3.46	3.46	-1.44	-1.13
July	0.13	1.15	1.12	2.37	2.38	-1.24	-1.23	0.72	0.75
Aug	0.11	-0.18	-0.19	3.03	3.04	2.00	2.00	1.76	1.76
Sept	0.11	-0.86	-0.87	-4.65	-4.65	-4.00	-4.01	-2.81	-2.90
Oct	0.13	-0.04	-0.03	7.00	7.01	5.43	5.42	2.46	2.46
Nov	0.13	0.30	0.30	-0.69	-0.69	-5.03	-5.03	-4.66	-4.65
Dec	0.12	-0.32	-0.26	4.48	4.48	0.58	0.55	5.10	5.12
<b>YTD</b>	<b>1.38</b>	<b>-1.46</b>	<b>-1.54</b>	<b>28.68</b>	<b>28.71</b>	<b>12.45</b>	<b>12.35</b>	<b>11.45</b>	<b>11.26</b>

The G Fund is managed internally by the Federal Retirement Thrift Investment Board. Assets of the F, C, S, and I Funds are managed externally. The Board currently has contracts with BlackRock Institutional Trust Company, N.A., to manage the F, C, S, and I Fund assets. The F, C, S, and I Funds invest in commingled trust funds, in which the assets of tax-deferred employee benefit plans are combined and invested together. The F, C, S, and I Funds and the BlackRock funds are passively managed index funds. Future performance of the funds will vary and may be significantly different from the returns shown above. See the *Summary of the*

*Thrift Savings Plan* for detailed information about the funds and their investment risks. The monthly returns of the TSP Funds represent net earnings for the month after deduction of accrued administrative expenses and, except for the G Fund, after deduction of trading costs and accrued investment management fees as well. The returns for the four indexes shown do not include any of these deductions.

\* Implemented May 2001.

**See next page for L Funds.**

**L Funds**

<b>Annual Returns</b>	<b>L Income</b>	<b>L 2020</b>	<b>L 2030</b>	<b>L 2040</b>	<b>L 2050</b>
2015	1.85	1.35	1.04	0.73	0.45
2016	3.58	5.47	7.07	7.90	8.65
2017	6.19	9.86	14.54	16.77	18.81
2018	0.71	-0.36	-3.58	-4.89	-6.02
2019	7.60	9.38	17.60	20.69	23.33
2020	5.15		11.26	13.16	14.79

<b>Annual Returns</b>	<b>L Income</b>	<b>L 2025</b>	<b>L 2030</b>	<b>L 2035</b>	<b>L 2040</b>	<b>L 2045</b>	<b>L 2050</b>	<b>L 2055</b>	<b>L 2060</b>	<b>L 2065</b>
2021	5.42	9.75	12.37	13.43	14.51	15.40	16.34	19.90	19.90	19.90

<b>Monthly Returns</b>	<b>L Income</b>	<b>L 2025</b>	<b>L 2030</b>	<b>L 2035</b>	<b>L 2040</b>	<b>L 2045</b>	<b>L 2050</b>	<b>L 2055</b>	<b>L 2060</b>	<b>L 2065</b>
<b>2021</b>										
Jan	-0.10	-0.24	-0.32	-0.35	-0.37	-0.39	-0.41	-0.44	-0.44	-0.44
Feb	0.63	1.35	1.70	1.86	2.03	2.17	2.32	2.93	2.93	2.93
Mar	0.71	1.44	1.78	1.93	2.08	2.20	2.33	2.92	2.92	2.91
Apr	1.14	2.15	2.74	2.99	3.24	3.45	3.66	4.35	4.35	4.35
May	0.47	0.81	1.00	1.08	1.16	1.22	1.28	1.50	1.50	1.50
June	0.39	0.64	0.79	0.86	0.92	0.98	1.03	1.17	1.17	1.17
July	0.47	0.75	0.92	0.99	1.05	1.10	1.15	1.26	1.26	1.26
Aug	0.63	1.16	1.50	1.63	1.77	1.88	1.99	2.42	2.42	2.41
Sept	-0.87	-1.78	-2.37	-2.61	-2.85	-3.05	-3.25	-3.87	-3.87	-3.87
Oct	1.28	2.33	3.14	3.43	3.72	3.97	4.22	5.12	5.11	5.11
Nov	-0.50	-1.09	-1.55	-1.72	-1.89	-2.04	-2.20	-2.71	-2.71	-2.71
Dec	1.06	1.90	2.54	2.76	2.99	3.17	3.37	4.08	4.08	4.08
<b>YTD</b>	<b>5.42</b>	<b>9.75</b>	<b>12.37</b>	<b>13.43</b>	<b>14.51</b>	<b>15.40</b>	<b>16.34</b>	<b>19.90</b>	<b>19.90</b>	<b>19.90</b>

The TSP added six new L Funds that have 5-year increments rather than the previous 10-year increments.

## Freely Associated States Restrictions

We list the mailing restrictions for Freely Associated States (FAS) in the Pull-Out section of the *Postal Bulletin*. All FAS Restrictions will be updated periodically.

### Freely Associated States

Mail addressed to freely associated states is subject to certain conditions or restrictions of mailing regarding content, preparation, and handling. The following FAS Restrictions table outlines these conditions as listed by each affected FAS ZIP Code™ through the use of footnoted mailing restrictions codes (see the [Restrictions](#) following the table). For more information on available extra services for FAS destinations, see *Mailing Standards of the United States Postal Service, Domestic Mail Manual (DMM®)*, part 503.

Acceptance clerks must use the table with the Retail System Software terminal to determine which FAS ZIP Codes are active and which conditions of mailing apply.

### FAS Restrictions Table

FAS Table	See Restrictions
96939	A, B
96940	A, B
96941	A, B
96942	A, B
96943	A, B
96944	A, B
96960	A, B
96970	A, B, D
Marshall Islands	C
Federated States of Micronesia	C

### RESTRICTIONS LEGEND

PS Form 2976, *Customs Declaration CN 22 — Sender's Declaration*

PS Form 2976-A, *Customs Declaration and Dispatch Note*

FAS = Freely Associated State

- A.** Bank currency (coin and paper) is prohibited.
- B.** Signature Confirmation, Signature Confirmation Restricted Delivery, Adult Signature Requested, Adult Signature Restricted Delivery, Certified Mail Adult Signature Required, and Certified Mail Adult Signature Restricted Delivery not available.
- C.** Collect on Delivery is prohibited.
- D.** Betel nut (Areca catechu) is prohibited.

— *Asia-Pacific Relations,  
Global Business, 1-27-22*

## 2021 Tax Information: Form W-2 Wage and Tax Statement; Form 1099 (continued)

*Requesting a Duplicate Form W-2c*

All requests for duplicate Forms W-2c must be submitted in writing.

To request duplicate Forms W-2c (2012 to the present)...	Send a written request to...
Provide employee name, current mailing address, Social Security number and Employee ID, year(s) requested, and employee signature.	Financial Reporting Section (W-2c) Eagan Accounting Services 2825 Lone Oak Parkway Eagan, MN 55121-9617

**IRS Form 1099**

Depending on your specific circumstances, the following three different IRS Forms 1099 may be issued to you:

- IRS Form 1099-MISC, *Statement for Recipient of Miscellaneous Income*.
- IRS Form 1099-R, *Statement for Recipient of Distributions from Pensions, Annuities, Retirement, or Profit Sharing Plans, IRAs, Insurance Contracts, etc.*
- IRS Form 1099-INT, *Statement for Recipient of Interest Income*.
- IRS Form 1099-NEC, *Statement for Recipient of Nonemployee Compensation*.

View the Payer's name and address in the upper left-hand corner of Form 1099.

**Note:** Payer name and address shows St. Louis, MO for payments made by both San Mateo and St. Louis. Determine the nature of the payments and contact the appropriate Accounting Services group.

**Payer's Name: Eagan, MN** (Upper left-hand corner of Form 1099)

Requests for duplicate copies and questions regarding...	Should be directed to...
<b>Payments to the beneficiaries of deceased employees pertaining to unpaid compensation due the employee</b> Send a written request. Provide deceased employee's name, Social Security number and Employee ID, and date of payment, if known.	Financial Processing Section Eagan Accounting Services 2825 Lone Oak Parkway Eagan, MN 55121-9616
<b>Lump sum payments with no deductions as the result of settlements</b> Send a written request. Provide name, Social Security number and Employee ID, amount of settlement, and date of payment, if known.	Financial Processing Section Eagan Accounting Services 2825 Lone Oak Parkway Eagan, MN 55121-9616
<b>Interest payments (postal employment-related back-pay)</b> Send a written request. Provide name, Social Security number and Employee ID, and date of payment, if known.	Financial Processing Section Eagan Accounting Services 2825 Lone Oak Parkway Eagan, MN 55121-9616

**Payer's Name: St. Louis, MO** (Upper left-hand corner of Form 1099)

Requests for duplicate copies and questions regarding...	Should be directed to...
<b>Contract Postal Unit or Government Services Agency (GSA)</b> Send a written request. Provide name, current address, TIN (Taxpayer Identification Number) or Social Security number, tax year of Form 1099, amount of Form 1099, and problem.	General Accounting Branch Contract Postal Units PO Box 80105 St. Louis, MO 63180-0105
<b>Uniform Allowance</b> Send a written request. Provide name, current address, TIN (Taxpayer Identification Number) or Social Security number, tax year of Form 1099, amount of Form 1099, and problem.	General Accounting Branch Uniform Allowance PO Box 80106 St. Louis, MO 63180-0106
<b>Highway Contractor or Rail Contractor</b> Send a written request. Provide name, current address, TIN (Taxpayer Identification Number) or Social Security number, tax year of Form 1099, amount of Form 1099, 5-digit HCR number, and problem.	General Accounting Branch Highway Transportation PO Box 80191 St. Louis, MO 63180-0191
<b>Air Contractor</b> Send a written request. Provide name, current address, TIN (Taxpayer Identification Number) or Social Security number, tax year of Form 1099, amount of Form 1099, Carrier Code number, and problem.	General Accounting Branch Transportation Section PO Box 80193 St. Louis, MO 63180-0193
<b>Rents/Leases</b> Send a written request. Provide name, current address, TIN (Taxpayer Identification Number) or Social Security number, tax year of Form 1099, amount of Form 1099, and problem.	General Accounting Branch Facility Asset Accounting Section PO Box 80452 St. Louis, MO 63180-0452

**Payer's Name: San Mateo (St. Louis Satellite Office), CA** (Upper left-hand corner of Form 1099)

Requests for duplicate copies and questions regarding...	Should be directed to...
<b>Contract Cleaners</b> Send a written request. Include contract cleaner's TIN (Taxpayer Identification Number) or Social Security number and Employee ID, tax year of Form 1099, amount of Form 1099, date of payment (if known), phone number, and problem.	Contract Cleaners Unit St. Louis Satellite Office 2700 Campus Drive San Mateo, CA 94497-9426
<b>All Others</b> Send a written request. Include service provider's name, TIN (Taxpayer Identification Number), tax year of Form 1099, amount of Form 1099, date of payment (if known), phone number, and problem.	St. Louis Satellite Office Attn: 1099 Research Team 2700 Campus Drive San Mateo, CA 94497-9400



## Form 1099-R

Both the Office of Personnel Management (OPM) and Eagan Accounting Services issue Forms 1099-R. The Eagan Accounting Services office issues a Form 1099-R for annuity protection checks, and OPM issues a Form 1099-R for monthly annuity checks. The originating agency must be listed on the Form 1099-R. Determine which agency made the payments before making an inquiry.

Requests for duplicate copies and questions regarding forms issued from...	Should be directed to...
<b>Eagan Accounting Services</b> Send a written request. Provide name, address, Social Security number and Employee ID, tax year for Form 1099, and amount of Form 1099.	Eagan Accounting Services 2825 Lone Oak Parkway Eagan, MN 55121- <b>9630</b>
<b>Office of Personnel Management</b> Send a written request. Provide name, address, claim number (CSA or CSF) or Social Security number, tax year for Form 1099, and amount of Form 1099.	Office of Personnel Management Retirement Operations Center PO Box 45 Boyers, PA 16017- <b>0045</b>

— Payroll,  
Controller, 1-27-22

## 2022 Social Security and Medicare Tax Withholding Rates and Limits

For 2022, the maximum limit on earnings for withholding of Social Security (old-age, survivors, and disability insurance) tax is \$147,000.00. The Social Security tax rate remains at 6.2 percent. The resulting maximum Social Security tax for 2022 is \$9,114.00.

There is no limit on the amount of earnings subject to Medicare (hospital insurance) tax. The Medicare tax rate applies to all taxable wages and remains at 1.45 percent with the exception of an “additional Medicare tax” assessed against all taxable wages paid in excess of the applicable threshold (see Note). The FICA tax rate, which is the combined Social Security rate of 6.2 percent and the Medicare rate of 1.45 percent, remains 7.65 percent for 2022 (or 8.55 percent for taxable wages paid in excess of the applicable threshold).

The information in the following table shows the changes in Social Security withholding limits from 2021 to 2022. There are no changes in Medicare limits.

Tax	2021 Limit	2022 Limit
Social Security gross	\$142,800.00	\$147,000.00
Social Security liability	\$8,853.60	\$9,114.00
Medicare gross	No limit	No limit
Medicare liability	No limit	No limit

**Note:** The Patient Protection and Affordable Care Act signed into law March 23, 2010, created the “additional Medicare tax” that changed Medicare withholding computations effective January 1, 2013. All wages, self-employment income, and other compensation that are subject to regular Medicare tax and are paid in excess of the applicable threshold are subject to the additional Medicare tax. Employers are required to withhold the additional Medicare tax at a 0.9 percent rate on wages and other compensation paid to an employee in excess of \$200,000 in a calendar year. There is no employer match for the additional Medicare tax.

— Payroll,  
Controller, 1-27-22

## Form W-2, Wage and Tax Statement (page 1 of 2)



Exemption from withholding: Employees claiming "exempt" from withholding during the year must complete a new Form W-4 each year to keep their "exempt" status. Please contact HRSSC for details.

Notice: If an employee has earnings from more than one state or locality, a separate W-2 is issued for each.

This information is being furnished to the Internal Revenue Service.

Finance Number:

If you are required to file a tax return, a negligence penalty or other sanction may be imposed on you if this income is taxable and you fail to report it.

## ATTENTION POSTMASTER DO NOT FORWARD

## Source of reported wages

The Wages and Other Compensation amount reported in Box 1 of Form W-2 is derived from year-to-date totals reflected on the employee's Pay Period 25-2021 (or last period in pay status 2021) Earnings Statement, plus several other totals from the Form W-2. Use the Reconciliation Formula below to reconcile your Earnings Statement with your W-2. If any checks issued during 2021 were returned or canceled after the last Earnings Statement was printed, this reconciliation is not applicable.

## Earnings Statement (YTD)

Gross  
Social Security Tax  
Medicare Tax  
Fed Tax  
HB Pretax  
State Income Tax  
State Other Tax  
Thrift Savings Plan  
FSA  
Commuter  
FEDVIP  
HSA  
Local Tax

## Reconciliation Formula

Gross Pay (YTD)  
- FSA Contributions  
- Thrift Savings Plan (tax deferred)  
- Relocation Excludable  
- Pretax HB HSA FEDVIP  
- Pretax Commuter Program  
+ Taxable Vehicle  
+ Imputed Income-Life Insurance  
+ Miscellaneous  
+ Relocation Gross  
+ Locality Pay LEAP AUO GeoPay  
+ Deferred Comp Distribution

FOR EMPLOYMENT VERIFICATION  
CALL 1-800-367-5690

Visit the IRS website at  
[www.irs.gov/efile](http://www.irs.gov/efile)



Safe, accurate,  
FAST! Use

= Wages, tips, other comp Box 1

a Employee's social security number		b Employer identification number <b>41-0760000</b>	
c Employer's name, address, and ZIP code United States Postal Service Eagan Accounting Service Center 2825 Lone Oak Parkway Eagan MN 55121-9617			
d Control number			
e Employee's first name and initial		Last name Suffix	
f Employee's address and ZIP code			
1 Wages, tips, other compensation		2 Federal income tax withheld	
3 Social security wages	4 Social security tax withheld		
5 Medicare wages and tips	6 Medicare tax withheld		
7 Social security tips	8 Allocated tips		
9	10 Dependent care benefits		
11 Nonqualified plans	12a See instructions for box 12		
13 Statutory Retirement employee plan	12b		
14 Other	12c		
	12d		
15 State Employer's state ID no.	16 State wages, tips, etc.		
17 State income tax	18 Local wages, tips, etc.		
19 Local income tax	20 Locality name		
Form <b>W-2</b> Wage and Tax Statement <b>2021</b> Department of the Treasury-Internal Revenue Service			
Copy C - For EMPLOYEE'S RECORDS OMB No. 1545-0008			

a Employee's social security number		b Employer identification number <b>41-0760000</b>	
c Employer's name, address, and ZIP code United States Postal Service Eagan Accounting Service Center 2825 Lone Oak Parkway Eagan MN 55121-9617			
d Control number			
e Employee's first name and initial		Last name Suffix	
f Employee's address and ZIP code			
1 Wages, tips, other compensation		2 Federal income tax withheld	
3 Social security wages	4 Social security tax withheld		
5 Medicare wages and tips	6 Medicare tax withheld		
7 Social security tips	8 Allocated tips		
9	10 Dependent care benefits		
11 Nonqualified plans	12a See instructions for box 12		
13 Statutory Retirement employee plan	12b		
14 Other	12c		
	12d		
15 State Employer's state ID no.	16 State wages, tips, etc.		
17 State income tax	18 Local wages, tips, etc.		
19 Local income tax	20 Locality name		
Form <b>W-2</b> Wage and Tax Statement <b>2021</b> Department of the Treasury-Internal Revenue Service Copy B - To Be Filed With Employee's FEDERAL Tax Return OMB No. 1545-0008			

a Employee's social security number		b Employer identification number <b>41-0760000</b>	
c Employer's name, address, and ZIP code United States Postal Service Eagan Accounting Service Center 2825 Lone Oak Parkway Eagan MN 55121-9617			
d Control number			
e Employee's first name and initial		Last name Suffix	
f Employee's address and ZIP code			
1 Wages, tips, other compensation		2 Federal income tax withheld	
3 Social security wages	4 Social security tax withheld		
5 Medicare wages and tips	6 Medicare tax withheld		
7 Social security tips	8 Allocated tips		
9	10 Dependent care benefits		
11 Nonqualified plans	12a		
13 Statutory Retirement employee plan	12b		
14 Other	12c		
	12d		
15 State Employer's state ID no.	16 State wages, tips, etc.		
17 State income tax	18 Local wages, tips, etc.		
19 Local income tax	20 Locality name		
Form <b>W-2</b> Wage and Tax Statement <b>2021</b> Department of the Treasury-Internal Revenue Service Copy 1 - For State, City, or Local Tax Department OMB No. 1545-0008			

a Employee's social security number		b Employer identification number <b>41-0760000</b>	
c Employer's name, address, and ZIP code United States Postal Service Eagan Accounting Service Center 2825 Lone Oak Parkway Eagan MN 55121-9617			
d Control number			
e Employee's first name and initial		Last name Suffix	
f Employee's address and ZIP code			
1 Wages, tips, other compensation		2 Federal income tax withheld	
3 Social security wages	4 Social security tax withheld		
5 Medicare wages and tips	6 Medicare tax withheld		
7 Social security tips	8 Allocated tips		
9	10 Dependent care benefits		
11 Nonqualified plans	12a		
13 Statutory Retirement employee plan	12b		
14 Other	12c		
	12d		
15 State Employer's state ID no.	16 State wages, tips, etc.		
17 State income tax	18 Local wages, tips, etc.		
19 Local income tax	20 Locality name		
Form <b>W-2</b> Wage and Tax Statement <b>2021</b> Department of the Treasury-Internal Revenue Service Copy 2 - To Be Filed With Employee's State, City, or Local Income Tax Return OMB No. 1545-0008			

## Form W-2, Wage and Tax Statement (page 2 of 2)

## Notice to Employee

Do you have to file? Refer to the Instructions for Forms 1040 and 1040-SR to determine if you are required to file a tax return. Even if you don't have to file a tax return, you may be eligible for a refund if box 2 shows an amount or if you are eligible for any credit.

**Earned income credit (EIC).** You may be able to take the EIC for 2021 if your adjusted gross income (AGI) is less than a certain amount. The amount of the credit is based on income and family size. Workers without children could qualify for a smaller credit. You and any qualifying children must have valid social security numbers (SSNs). You can't take the EIC if your investment income is more than the specified amount for 2021 or if income is earned for services provided while you were an inmate at a penal institution.

For 2021 income limits and more information, visit [www.irs.gov/eitc](http://www.irs.gov/eitc). See also Pub. 595, Earned Income Credit. Any EIC that is more than your tax liability is refunded to you, but only if you file a tax return.

**Employee's social security number (SSN).** For your protection, this form may show only the last four digits of your SSN. However, your employer has reported your complete SSN to the IRS and SSA.

**Clergy and religious workers.** If you aren't subject to social security and Medicare taxes, see Pub. 517, Social Security and Other Information for Members of the Clergy and Religious Workers.

**Corrections.** If your name, SSN, or address is incorrect, correct Copies B, C, and 2 and ask your employer to correct your employment record. Be sure to ask the employer to file Form W-2c, Corrected Wage and Tax Statement, with the Social Security Administration (SSA) to correct any name, SSN, or money amount error reported to the SSA on Form W-2. Be sure to get your copies of Form W-2c from your employer for all corrections made so you may file them with your tax return. If your name and SSN are correct but aren't the same as shown on your social security card, you should ask for a new card that displays your correct name at any SSA office or by calling 800-772-1213. You may also visit the SSA website at [www.SSA.gov](http://www.SSA.gov).

**Cost of employer-sponsored health coverage** (If such cost is provided by the employer). The reporting in box 12, using code DD, of the cost of employer-sponsored health coverage is for your information only. The amount reported with code DD is not taxable.

**Credit for excess taxes.** If you had more than one employer in 2021 and more than \$8,853.60 in social security and/or Tier 1 railroad retirement (RTTA) taxes were withheld, you may be able to claim a credit for the excess against your federal income tax. If you had more than one railroad employer and more than \$5,203.80 in Tier 2 RTTA tax was withheld, you may also be able to claim a credit. See the Instructions for Forms 1040 and 1040-SR and Pub. 505, Tax Withholding and Estimated Tax.

## Instructions for Employees

(See also Notice to Employer)

**Box 1.** Enter this amount on the wages line of your tax return.

**Box 2.** Enter this amount on the federal income tax withheld line of your tax return.

**Box 5.** You may be required to report this amount on Form 9959, Additional Medicare Tax. See the Instructions for Forms 1040 and 1040-SR to determine if you are required to complete Form 9959.

**Box 6.** This amount includes the 1.45% Medicare Tax withheld on all Medicare wages and tips shown in box 5, as well as the 0.9% Additional Medicare Tax on any of those Medicare wages and tips above \$200,000.

**Box 8.** This amount is not included in box 1, 3, 5, or 7. For information on how to report tips on your tax return, see the instructions for forms 1040 and 1040-SR.

You must file Form 4137, Social Security and Medicare Tax on Unreported Tip Income, with your income tax return to report at least the allocated tip amount unless you can prove with adequate records that you received a smaller amount. If you have records that show the actual amount of tips you received, report that amount even if it is more or less than the allocated tips. Use Form 4137 to figure the social security and Medicare tax owed on tips you didn't report to your employer. Enter this amount on the wages line of your tax return. By filing Form 4137, your social security tips will be credited to your social security record (used to figure your benefits).

**Box 10.** This amount includes the total dependent care benefits that your employer paid to you or incurred on your behalf (including amounts from a section 125 (cafeteria) plan). Any amount over your employer's plan limit is also included in box 1. See Form 2441, Child and Dependent Care Expenses, to figure any taxable and nontaxable amounts.

**Box 11.** This amount is (a) reported in box 1 if it is a distribution made to you from a nonqualified deferred compensation or nongovernmental section 457(b) plan, or (b) included in box 3 and/or box 5 if it is a prior year deferral under a nonqualified or section 457(b) plan that became taxable for social security and Medicare taxes this year because there is no longer a substantial risk of forfeiture of your right to the deferred amount. This box shouldn't be used if you had a deferral and a distribution in the same calendar year. If you made a deferral and received a distribution in the same calendar year, and you are or will be age 62 by the end of the calendar year, your employer should file Form SSA-131, Employer Report of Special Wage Payments, with the Social Security Administration and give you a copy.

**Box 12.** The following list explains the codes shown in box 12. You may need this information to complete your tax return. Elective deferrals (codes D, E, F, and S) and designated Roth contributions (codes AA, BB, and EE) under all plans are generally limited to a total of \$19,500 (\$13,500 if you only have SIMPLE plans; \$22,500 for section 403(b) plans if you qualify for the 15-year rule explained in Pub. 571).

Deferrals under code G are limited to \$19,500. Deferrals under code H are limited to \$7,000.

However, if you were at least age 50 in 2021, your employer may have allowed an additional deferral of up to \$6,500 (\$3,000 for section 401(k)(11) and 408(p) SIMPLE plans). This additional deferral amount is not subject to the overall limit on elective deferrals. For code G, the limit on elective deferrals may be higher for the last 3 years before you reach retirement age.

Contact your plan administrator for more information. Amounts in excess of the overall elective deferral limit must be included in income.

See the Instructions for Forms 1040 and 1040-SR.

**Note:** If a year follows code D through H, S, Y, AA, BB, or EE, you made a make-up pension contribution for a prior year(s) when you were in military service. To figure whether you made excess deferrals, consider these amounts for the year shown, not the current year. If no year is shown, the contributions are for the current year.

**A-**Uncollected social security or RTTA tax on tips. Include this tax on Form 1040 or 1040-SR. See the Instructions for Forms 1040 and 1040-SR.

**B-**Uncollected Medicare tax on tips. Include this tax on Form 1040 or 1040-SR. See the Instructions for Forms 1040 and 1040-SR.

**C-**Taxable cost of group-term life insurance over \$50,000 (included in boxes 1, 3 (up to the social security wage base), and 5).

**D-**Elective deferrals to a section 401(k) cash or deferred arrangement.

**E-**Also includes deferrals under a SIMPLE retirement account that is part of a section 401(k) arrangement.

**F-**Elective deferrals under a section 403(b) salary reduction agreement.

**G-**Elective deferrals under a section 408(k)(6) salary reduction SEP.

**H-**Elective deferrals and employer contributions (including nonselective deferrals) to a section 457(b) deferred compensation plan.

**I-**Elective deferrals to a section 501(c)(18)(D) tax-exempt organization plan. See the Instructions for Forms 1040 and 1040-SR for how to deduct.

**J-**Nontaxable sick pay (information only, not included in box 1, 3, or 5).

**K-**20% excise tax on excess golden parachute payments. See the Instructions for Form 1040 and 1040-SR.

**L-**Substantiated employee business expense reimbursements (nontaxable).

**M-**Uncollected social security or RTTA tax on taxable cost of group-term life insurance over \$50,000 (former employees only). See the Instructions for Forms 1040 and 1040-SR.

**N-**Uncollected Medicare tax on taxable cost of group-term life insurance over \$50,000 (former employees only). See the Instructions for Forms 1040 and 1040-SR.

**P-**Excludable moving expense reimbursements paid directly to a member of the U.S. Armed Forces (not included in box 1, 3, or 5).

**Q-**Nontaxable combat pay. See the Instructions for Forms 1040 and 1040-SR for details on reporting this amount.

**R-**Employer contributions to your Archer MSA. Report on Form 8853, Archer MSAs and Long-Term Care Insurance Contracts.

**S-**Employee salary reduction contributions under a section 408(p) SIMPLE plan (not included in box 1).

**T-**Adoption benefits (not included in box 1). Complete Form 8839, Qualified Adoption Expenses, to figure any taxable and nontaxable amounts.

**V-**Income from exercise of nonstatutory stock option(s) (included in boxes 1, 3 (up to the social security wage base), and 5). See Pub. 525, Taxable and Nontaxable Income, for reporting requirements.

**W-**Employer contributions (including amounts the employee elected to contribute using a section 125 (cafeteria) plan) to your health savings account. Report on Form 8859, Health Savings Accounts (HSAs).

**Y-**Deferrals under a section 409A nonqualified deferred compensation plan.

**Z-**Income under a nonqualified deferred compensation plan that fails to satisfy section 409A. This amount is also included in box 1. It is subject to an additional 20% tax plus interest. See the Instructions for Forms 1040 and 1040-SR.

**AA-**Designated Roth contributions under a section 401(k) plan.

**BB-**Designated Roth contributions under a section 403(b) plan.

**CC-**Cost of employer-sponsored health coverage. The amount reported with code DD is not taxable.

**EE-**Designated Roth contributions under a governmental section 457(b) plan. This amount does not apply to contributions under a tax-exempt organization section 457(b) plan.

**FF-**Permitted benefits under a qualified small employer health reimbursement arrangement.

**GG-**Income from qualified equity grants under section 83(i).

**HH-**Aggregate deferrals under section 83(i) elections as of the close of the calendar year.

**Box 13.** If the "Retirement plan" box is checked, special limits may apply to the amount of traditional IRA contributions you may deduct. See Pub. 590-A, Contributions to Individual Retirement Arrangements (IRAs).

**Box 14.** Employers may use this box to report information such as state disability insurance taxes withheld, union dues, uniform payments, health insurance premiums deducted, nontaxable income, educational assistance payments, or a member of the clergy's parsonage allowance and utilities. Railroad employers use this box to report railroad retirement (RTTA) compensation, Tier 1 tax, Tier 2 tax, Medicare tax, and Additional Medicare Tax. Include tips reported by the employee to the employer in railroad retirement (RTTA) compensation.

**Note:** Keep Copy C of Form W-2 for at least 3 years after the due date for filing your income tax return. However, to help protect your social security benefits, keep Copy C until you begin receiving social security benefits, just in case there is a question about your work record and/or earnings in a particular year.

## Form W-4 Completion for Employees Claiming Exempt Status for 2022

Internal Revenue Service (IRS) regulations permit employees who anticipate no federal tax liability for 2022 to claim total exemption from federal tax withholding if they owed no federal taxes for 2021. These regulations also require that employees submit a new Form W-4, *Employee's Withholding Certificate*, every calendar year if they claim an exempt status. However, employees can use *PostalEASE* to file their Form W-4 instead of filing a hard copy Form W-4.

Employees may meet IRS filing requirements for exempt Forms W-4 using the following methods:

- Log on to *PostalEASE* at [liteblue.usps.gov](https://liteblue.usps.gov), or
- Call *PostalEASE* toll-free at 877-477-3273, option 1.

To update your Form W-4 for calendar year 2022, follow the Form W-4 instructions provided by *PostalEASE*. If you need to contact the HR Shared Service Center (HRSSC) in Greensboro, NC, for more information, call 877-477-3273, menu option 5, and then request "Benefits" when prompted. If you have a hearing disability and you need to contact the HRSSC, call the Federal Relay Service at 800-877-8339.

Any employee currently in an exempt status who does not submit a new Form W-4 claiming a continuation of the exempt status will be converted to a taxable status, effective Pay Period (PP) 05-2022. For the exempt status to remain effective into 2022, the employee must enter updated Form W-4 information into *PostalEASE* no later than Wednesday, February 23, 2022, 3:00 P.M. CST. However, to ensure a seamless continuation of the exempt

status for 2022, the Postal Service™ encourages employees to update their W-4 information no later than a day or two in advance of the February 23 cut-off date.

**Note:** An employee currently in an exempt status may use *PostalEASE* to file for exemption after the February 23 cut-off date; however, in that instance, the employee's exempt status will not be continuous from 2021 to 2022. Depending on the day of the pay period in which the employee enters his or her W-4 information into *PostalEASE*, the 2022 exempt status is effective the pay period of entry or the pay period following entry.

Any employee who claimed exempt status for 2021 and does not submit a new Form W-4 will have federal taxes withheld at the rate normally applicable to an employee claiming "Single" with no other deductions. Employees with an exempt status (as of PP 26-2021) will receive printed messages on their earnings statements during PP 02-2022, PP 03-2022, and PP 04-2022 reminding them of the requirement to file a new Form W-4.

### Reminders

- The Postal Service prohibits all administrative and managerial employees from providing any tax advice to employees about the completion of Form W-4.
- The Postal Service no longer requires employees to send information about exempt Form W-4 to Eagan Accounting Services.

— Payroll,  
Controller, 1-27-22

## Maintain Updated Withholding Information in PostalEASE

As a United States Postal Service® employee, you are personally responsible for ensuring correct federal, state, and local taxes are deducted from your pay. The Internal Revenue Service (IRS) recommends reviewing your withholdings at the beginning of each year or when your personal circumstances change. Taking a closer look at the taxes being withheld helps you avoid surprises and ensures accuracy.

The IRS offers several online resources to help taxpayers bring taxes withheld closer to what is owed. These resources are available at [irs.gov](https://irs.gov) any time:

- A tax withholding estimator, which helps determine the correct amount of federal tax to withhold ([irs.gov/individuals/tax-withholding-estimator](https://irs.gov/individuals/tax-withholding-estimator)).
- Complete information on tax withholding, estimated taxes, FAQs, and more ([irs.gov/individuals/employees/tax-withholding](https://irs.gov/individuals/employees/tax-withholding)).

To Update Federal and/or State Tax Withholdings:

- Complete the federal *Form W-4, Withholding Allowance Certificate*, and/or the state equivalent of the federal Form W-4. (i.e., to update Minnesota tax withholdings, complete Form W-4MN, *Minnesota Withholding Allowance/Exemption Certificate*).
- Complete the federal Form W-4 if your state does not have its own state equivalent of the federal Form W-4.

- Go to the *LiteBlue* home page at [liteblue.usps.gov](https://liteblue.usps.gov) to access the *PostalEASE* App.
- Update your Federal W-4 Payroll Module and/or your State Tax Payroll Module.
- If you do not have access to a computer or the Internet, you can call *PostalEASE* toll-free at 877-477-3273, option 1, and follow the instructions.

**Note:** It is to your advantage to complete the paper form before your *PostalEASE* update, as the paper form comes with helpful instructions for complex state withholding selections.

If you need assistance, contact the HR Shared Service Center (HRSSC) at 877-477-3273, option 5. Employees with hearing disabilities may call the Federal Relay Service at 800-877-8339.

For more information about local taxes, see “Local Tax Code Information” in *Postal Bulletin* 22586 (12-2-21, pages 7–8).

The Postal Service is prohibited from providing any tax advice to employees. Any questions regarding your tax liability/responsibility must be directed to the IRS or a qualified tax attorney or accountant.

— Payroll,  
Controller, 1-27-22

## Information Security

### Cracking this Passphrase Could Take an Eternity

A 15-character passphrase containing special symbols, upper and lowercase letters, and numbers may seem like passphrase overkill. However, with supercomputers that can guess millions of passwords a minute, passphrase policies like those in Handbook AS-805, *Information Security*, are necessary (see [about.usps.com/handbooks/as805/as805c9\\_019.htm](https://about.usps.com/handbooks/as805/as805c9_019.htm)).

Brute force password attacks use the same methodology and repetition as using all the keys on a keyring to open a lock. An attacking computer systematically inputs every possible combination of uppercase and lowercase letters, numbers, and symbols to crack a password.

According to the password strength meter at [security.org/how-secure-is-my-password](https://security.org/how-secure-is-my-password), hackers can crack the password “becybersafe” in roughly one day. If you make this phrase compliant with USPS® policy — such as “B3\_Cyb3rS\*f3\_w0^k” — the passphrase will take 93 trillion years to crack.

Creating a memorable, policy-compliant, and hack-proof passphrase won’t seem like a daunting task if you follow these stress-free steps:

- Select an easy phrase to remember. **(Be CyberSafe)**
- Change specific letters into special characters or numbers to increase security and originality. (B3\_Cyb3rS\*f3)
- Add a unique identifier to further differentiate your passwords across your other accounts. (B3\_Cyb3rS\*f3\_w0^k)

For more information about creating a hack-proof passphrase, visit the Cybersafe at USPS® pages on *Blue* ([blue.usps.gov/cyber](https://blue.usps.gov/cyber)) and *LiteBlue* ([liteblue.usps.gov/cyber](https://liteblue.usps.gov/cyber)).

— Corporate Information Security Office,  
Chief Information Security Officer  
and Digital Solutions, 1-27-22

## Stamp Services

### Stamp Announcement 22-9: Title IX Stamps



©2021 USPS

On March 3, 2022, in Washington, DC, the United States Postal Service® will issue the *Title IX* stamps (Forever® priced at the First-Class Mail® rate) in four designs, in a pressure-sensitive adhesive (PSA) pane of 20 stamps (Item 481700). These stamps will go on sale nationwide March 3, 2022, and must not be sold or canceled before the first-day-of-issue. **The *Title IX* commemorative pane of 20 stamps may not be split and the stamps may not be sold individually.**

With this stamp issuance, the Postal Service™ commemorates the 50th anniversary of the passage of Title IX, a civil rights law prohibiting discrimination on the basis of sex from any educational program or activity receiving federal financial assistance. The stamp art features four unique designs, each a dark blue silhouette of a different woman's face in profile. The digital illustrations of the four women represent female athletes, specifically a runner, a swimmer, a gymnast, and a soccer player. Yellow laurel

branches, symbolic of victory, rest in their hair and on the swimmer's cap. "Title IX" appears written across the women's cheeks, intended as an empowering message about the inclusion of women and girls in all educational settings. The pane of 20 stamps includes a header. The stamps were designed and created by Melinda Beck. Derry Noyes served as art director.

#### **Availability to Post Offices: Item 481700, Title IX (Forever Priced at the First-Class Mail Rate) Pane of 20 Stamps**

Stamp Fulfillment Services will make an automatic push distribution to Post Offices of a quantity to cover approximately 30 days of sales. Distribution quantities for the automatic push distribution are available by logging on to SFS Web at [sfsweb.usps.gov/sfsweb](https://sfsweb.usps.gov/sfsweb). Post Offices may begin ordering stamps on the first-day-of-issue through SFS Web; offices must also check the amount they will receive on their automatic push distribution.

#### **How to Order the First-Day-of-Issue Postmark**

Customers have 120 days to obtain the first-day-of-issue postmark by mail. They may purchase new stamps at their local Post Office™ or at The Postal Store® website at [usps.com/shop](https://usps.com/shop). They must affix the stamps to envelopes of their choice, address the envelopes (to themselves or others), and place them in a larger envelope addressed to:

FD01 – Title IX Stamps  
USPS Stamp Fulfillment Services  
8300 NE Underground Drive, Suite 300  
Kansas City, MO 64144-9900

After applying the first-day-of-issue postmark, the Postal Service will return the envelopes through the mail. There is no charge for the postmark up to a quantity of 50. There is a 5-cent charge for each additional postmark over 50. All orders must be postmarked by July 3, 2022.

#### **How to Order First-Day Covers**

The Postal Service also offers first-day covers for new stamp issues and Postal Service stationery items postmarked with the official first-day-of-issue cancellation. Each item has an individual catalog number and is offered in the *USA Philatelic* catalog and online at [usps.com/shop](https://usps.com/shop). Customers may register to receive a free *USA Philatelic* catalog online at [usps.com/philatelic](https://usps.com/philatelic).



**Locally produced items are not authorized. Only merchandise that has been approved and assigned an item number by Headquarters Retail Marketing may be produced and sold.**

Issue:	<i>Title IX</i> Stamps
Item Number:	481700
Denomination & Type of Issue:	First-Class Mail Forever
Format:	Pane of 20 (4 designs)
Series:	N/A
Issue Date & City:	March 3, 2022, Washington, DC 20066
Art Director:	Derry Noyes, Washington, DC
Designer:	Melinda Beck, Brooklyn, NY
Typographer:	Melinda Beck, Brooklyn, NY
Artist:	Melinda Beck, Brooklyn, NY
Modeler:	Joseph Sheeran
Manufacturing Process:	Offset
Printer:	Ashton Potter (USA) Ltd. (APU)
Press Type:	Muller A76
Stamps per Pane:	20
Print Quantity:	30,000,000 stamps
Paper Type:	Nonphosphored Type III, Block Tag
Adhesive Type:	Pressure-sensitive
Colors:	Cyan, Magenta, Yellow, Black
Stamp Orientation:	Vertical
Image Area (w x h):	1.085 x 1.42 in. / 27.559 x 36.068 mm
Overall Size (w x h):	1.225 x 1.56 in. / 31.12 x 39.62 mm
Full Pane Size (w x h):	7.12 x 7.85 in. / 180.848 x 199.39 mm
Press Sheet Size (w x h):	22.25 x 27 in. / 565.15 x 685.8 mm
Plate Size:	180 stamps per revolution
Plate Number:	"P" followed by four (4) digits in bottom two corners
Marginal Markings:	
Front:	Header: "TITLE IX" • Plate number in two corners
Back:	©2021 USPS • USPS Logo • Two barcodes (481700) • Plate position diagram (9) • Promotional text

— Stamp Services, Marketing, 1-27-22

## Pictorial Postmarks Announcement

As a community service, the Postal Service™ offers pictorial postmarks to commemorate local events celebrated in communities throughout the nation. A list of events for which pictorial postmarks are authorized appears on the following pages. The sponsor of the pictorial postmark appears in italics under the date. Also provided are illustrations of these postmarks.

People attending these local events may obtain the postmark in person at the temporary Post Office™ station established there. Those who cannot attend the event but who wish to obtain the postmark may submit a mail order request. Pictorial postmarks are available only for the dates indicated, and *requests must be postmarked no later than 30 days following the requested pictorial postmark date.*

All requests must include a stamped envelope or postcard bearing at least the minimum First-Class Mail® postage. Items submitted for postmark may not include

postage issued after the date of the requested postmark. Such items will be returned unserved.

Customers wishing to obtain a postmark must affix stamps to any envelope or postcard of their choice, address the envelope or postcard to themselves or others, insert a card of postcard thickness in envelopes for sturdiness, and tuck in the flap. Place the envelope or postcard in a larger envelope and address it to: Pictorial Postmarks, followed by the Name of the Station, Address, City, State, ZIP+4® Code, as listed next to the postmark.

Customers can also send stamped envelopes and postcards without addresses for postmark, as long as they supply a larger envelope with adequate postage and their return address. After applying the pictorial postmark, the Postal Service returns the items (with or without addresses) under addressed protective cover.



February 1, 2022

*United States Postal Service*  
Sharing Everlasting Love on  
Valentine's Day Station  
Postmaster  
119 Church Street  
Romeo, MI 48065-9998



February 6, 2022

*Boy Scouts of America*  
Barefoot Mailman Station  
Postmaster  
2200 NW 72 Avenue, #514  
Miami, FL 33152-9998



February 1, 2022

*Valentine's Day Station*  
Valentine's Day Station  
Postmaster  
6664 Route 362  
Bliss, NY 14024-9998

— Stamp Services,  
Marketing, 1-27-22

## How to Order the First-Day-of-Issue Digital Color or Traditional Postmarks

Customers have 120 days to obtain the first-day-of-issue postmarks by mail. Each cover must have sufficient postage to meet First-Class Mail® requirements. Customers may purchase new stamps at their local Post Office™, by phone at 844-737-7826, or on The Postal Store® website at [usps.com/shop](https://usps.com/shop).

### Digital Color Postmarks

Only select stamp issues offer a digital color postmark. Customers may submit #6 or #10 envelopes constructed of paper rated as "laser safe." The Postal Service™ recommends envelopes of 80-pound Accent Opaque, acid-free, 9/16-inch side seams with no glue on the flap. The maximum size of all digital color postmarks is 2 inches (vertically) by 4 inches (horizontally). Allow sufficient space on the envelope to accommodate the postmark. Do not use self-adhesive labels for addresses on the envelope. Two test envelopes must be included. There is a minimum of 10 envelopes at 50 cents per postmark required at the time of servicing. Customers must submit a check, money order, or credit card for payment.

The Postal Service reserves the right to not accept hand-painted and other cachet envelopes that are not compatible with our digital color postmark equipment. The Postal Service also reserves the right to substitute traditional black rubber postmarks if use of nonspecified envelopes results in poor image quality or damage to equipment.

Customers must affix the stamps to the envelopes and address them to themselves or others for return through the mail. Or, they may include an additional self-addressed return envelope, large enough to accommodate their canceled items, with sufficient postage affixed for return of

their postmarked items. Address customer requests for digital color postmarks to:

FDOI – (Name of Stamp Issue)  
USPS Stamp Fulfillment Services  
8300 NE Underground Drive, Suite 300  
Kansas City, MO 64144-9900

After applying the first-day-of-issue postmark, the Postal Service will return the envelopes to the customer by U.S. Mail®.

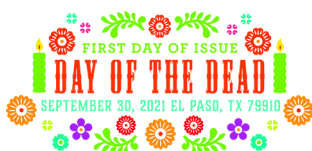
### Traditional Postmarks

Customers must affix the stamps to the envelopes and address them to themselves or others for return through the mail. Or, they may include an additional self-addressed return envelope, large enough to accommodate their canceled items, with sufficient postage affixed for return of their postmarked items. Address customer requests for traditional postmarks to:

FDOI – (Name of Stamp Issue)  
USPS Stamp Fulfillment Services  
8300 NE Underground Drive, Suite 300  
Kansas City, MO 64144-9900

After applying the first-day-of-issue postmark, the Postal Service will return the envelopes to the customer by U.S. Mail™. There is no charge for the first 50 postmarks. There is a 5-cent charge for each additional postmark over 50. Customers must submit a check, money order, or credit card for payment.

Locally produced items are not authorized. Only merchandise that has been approved and assigned an item number by Headquarters Retail Marketing may be produced and sold.



Digital Color Pictorial

#### FDOI – Day of the Dead Stamps

USPS Stamp Fulfillment Services  
8300 NE Underground Drive, Suite 300  
Kansas City, MO 64144-9900

January 30, 2022



Black and White Pictorial

#### FDOI – Day of the Dead Stamps

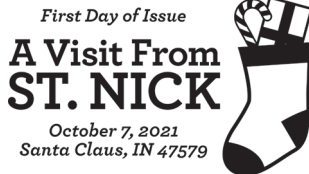
USPS Stamp Fulfillment Services  
8300 NE Underground Drive, Suite 300  
Kansas City, MO 64144-9900

January 30, 2022

**FDOI – A Visit from St. Nick Stamps**

USPS Stamp Fulfillment Services  
8300 NE Underground Drive, Suite 300  
Kansas City, MO 64144-9900

February 7, 2022

**Digital Color Pictorial****FDOI – A Visit from St. Nick Stamps**

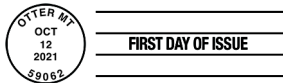
USPS Stamp Fulfillment Services  
8300 NE Underground Drive, Suite 300  
Kansas City, MO 64144-9900

February 7, 2022

**Black and White Pictorial****FDOI – Otters in Snow Stamps**

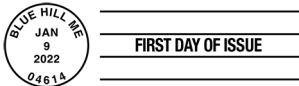
USPS Stamp Fulfillment Services  
8300 NE Underground Drive, Suite 300  
Kansas City, MO 64144-9900

February 12, 2022

**Digital Color Pictorial****FDOI – Otters in Snow Stamps**

USPS Stamp Fulfillment Services  
8300 NE Underground Drive, Suite 300  
Kansas City, MO 64144-9900

February 12, 2022

**Black and White Pictorial****FDOI – Blueberries Stamp**

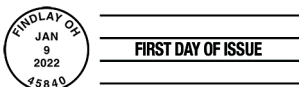
USPS Stamp Fulfillment Services  
8300 NE Underground Drive, Suite 300  
Kansas City, MO 64144-9900

May 9, 2022

**Black and White Pictorial****FDOI – U.S. Flags 2022 Stamp**

USPS Stamp Fulfillment Services  
8300 NE Underground Drive, Suite 300  
Kansas City, MO 64144-9900

May 9, 2022

**Digital Color Pictorial****FDOI – U.S. Flags 2022 Stamp**

USPS Stamp Fulfillment Services  
8300 NE Underground Drive, Suite 300  
Kansas City, MO 64144-9900

May 9, 2022

**Black and White Pictorial**



Digital Color Pictorial

**FDOI – Love 2022 Stamps**

USPS Stamp Fulfillment Services  
8300 NE Underground Drive, Suite 300  
Kansas City, MO 64144-9900

May 14, 2022



Black and White Pictorial

**FDOI – Love 2022 Stamps**

USPS Stamp Fulfillment Services  
8300 NE Underground Drive, Suite 300  
Kansas City, MO 64144-9900

May 14, 2022



Digital Color Pictorial

**FDOI – Lunar New Year — Year of the Tiger Stamp**

USPS Stamp Fulfillment Services  
8300 NE Underground Drive, Suite 300  
Kansas City, MO 64144-9900

May 20, 2022



Black and White Pictorial

**FDOI – Lunar New Year — Year of the Tiger Stamp**

USPS Stamp Fulfillment Services  
8300 NE Underground Drive, Suite 300  
Kansas City, MO 64144-9900

May 20, 2022

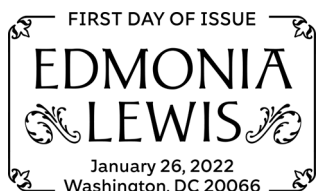


Digital Color Pictorial

**FDOI – Edmonia Lewis Stamp**

USPS Stamp Fulfillment Services  
8300 NE Underground Drive, Suite 300  
Kansas City, MO 64144-9900

May 26, 2022

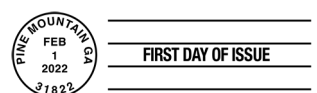


Black and White Pictorial

**FDOI – Edmonia Lewis Stamp**

USPS Stamp Fulfillment Services  
8300 NE Underground Drive, Suite 300  
Kansas City, MO 64144-9900

May 26, 2022



Black and White Pictorial

**FDOI – Butterfly Garden Flowers Stamps**

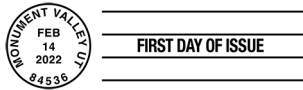
USPS Stamp Fulfillment Services  
8300 NE Underground Drive, Suite 300  
Kansas City, MO 64144-9900

June 1, 2022

**FDOI – Monument Valley Stamp**

USPS Stamp Fulfillment Services  
8300 NE Underground Drive, Suite 300  
Kansas City, MO 64144-9900

June 14, 2022

**Digital Color Pictorial****FDOI – Monument Valley Stamp**

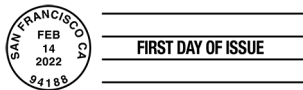
USPS Stamp Fulfillment Services  
8300 NE Underground Drive, Suite 300  
Kansas City, MO 64144-9900

June 14, 2022

**Black and White Pictorial****FDOI – Palace of Fine Arts Stamp**

USPS Stamp Fulfillment Services  
8300 NE Underground Drive, Suite 300  
Kansas City, MO 64144-9900

June 14, 2022

**Digital Color Pictorial****FDOI – Palace of Fine Arts Stamp**

USPS Stamp Fulfillment Services  
8300 NE Underground Drive, Suite 300  
Kansas City, MO 64144-9900

June 14, 2022

**Black and White Pictorial****FDOI – Title IX Stamps**

USPS Stamp Fulfillment Services  
8300 NE Underground Drive, Suite 300  
Kansas City, MO 64144-9900

July 3, 2022

**Digital Color Pictorial****FDOI – Title IX Stamps**

USPS Stamp Fulfillment Services  
8300 NE Underground Drive, Suite 300  
Kansas City, MO 64144-9900

July 3, 2022

**Black and White Pictorial**





475 L'ENFANT PLAZA SW  
WASHINGTON DC 20260-5540

First-Class Mail  
Postage & Fees Paid  
USPS  
Permit No. G-10

Set Your Imagination Free with  
**Message Monsters  
Forever® Stamps**



ON SALE NATIONWIDE:  
SEPTEMBER 24, 2021

Sold as a full pane.

