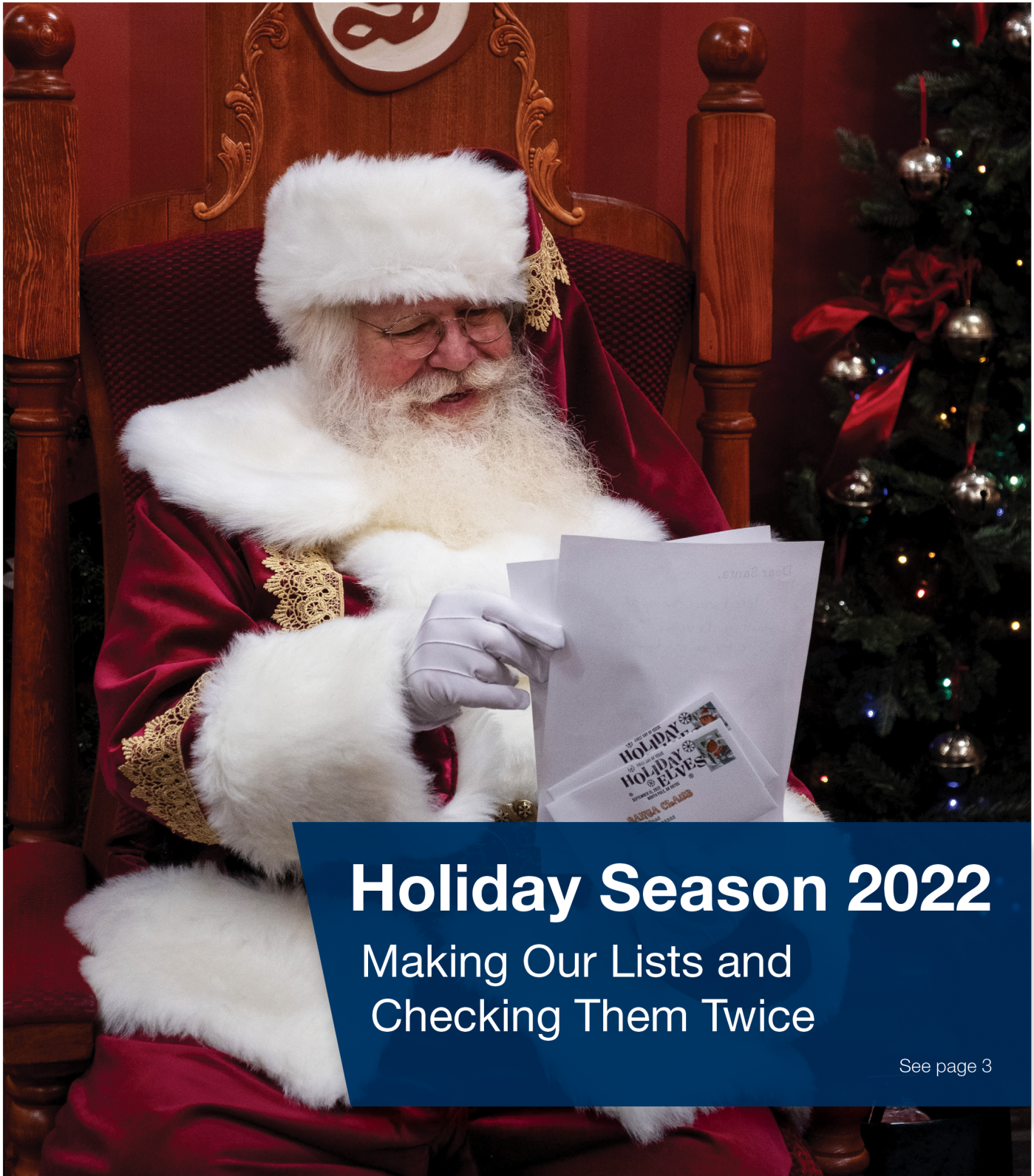


Postal Bulletin

Published Since March 4, 1880

October 20, 2022
PB 22609



Holiday Season 2022

Making Our Lists and
Checking Them Twice

See page 3

Contents

COVER STORY

Holiday Season 2022	3
-------------------------------	---

POLICIES, PROCEDURES, AND FORMS UPDATES

Manuals

DMM Revision: Addressing Military Mail	9
IMM Revision: Availability of Electronic USPS Delivery Confirmation International Service	9
IMM Revision: Individual Country Listing for Saudi Arabia	10

Handbooks

Handbook EL-814 Revision: Update of Postal Employee's Guide to Safety	11
---	----

Publications

Publication 685 Revision: Postage Assessment Process Table	11
--	----

ORGANIZATION INFORMATION

Environmental Management

Recycling Change: Inkjet, Toner Cartridges Affected	13
---	----

Finance

Christmas Pay Procedures for Rural Carriers	13
---	----

Information Security

Career Change? Explore the Field of Cybersecurity	51
---	----

Safety and Health

Be Ready for an Emergency	51
-------------------------------------	----

Stamp Services

Pictorial Postmarks Announcement	53
--	----

How to Order the First-Day-of-Issue Digital Color or Traditional Postmarks	55
--	----

PULL-OUT INFORMATION

Fraud

Invalid USPS Corporate Account Numbers	21
Missing, Lost, or Stolen U.S. Money Order Forms	23
Missing, Lost, or Stolen Canadian Money Order Forms	29
Verifying U.S. Postal Service Money Orders	31
Counterfeit Canadian Money Order Forms	31
Toll-Free Number Available to Verify Canadian Money Orders	31

Other Information

Overseas Military/Diplomatic Mail	32
Thrift Savings Plan Fact Sheet	38
Freely Associated States Restrictions	40

POSTAL BULLETIN 2022 SEMI-ANNUAL INDEX

2022 Semi-Annual Index	PB 22604 (8-11-22)
----------------------------------	--------------------

Find the latest in mail and delivery information
and services offered by U.S. Postal®
in the *Postal Bulletin* at
about.usps.com/postal-bulletin

Mail Moment®

Cover Story

Holiday Season 2022

The Postal Service™ is putting the finishing touches on what we expect will be a very busy 2022 peak season. Our employees are hard at work installing new machinery, distributing new stamps, dusting off the holiday-themed postmarks, and preparing for the influx of holiday mailings across the country. Here are some important details to prepare for the holiday shipping season.



Holiday Stamps

The Postal Service offers a wide variety of contemporary and religious stamps for the holidays. Customers may purchase these stamps at Post Office™ locations or online at usps.com/shop. New stamps this year include:

- *Holiday Elves.*
- *Snowy Beauty.*
- *Hanukkah.*
- *Virgin and Child.*
- *Kwanzaa.*

Holiday stamps from previous years are also available:

- *Otters in the Snow.*
- *Diwali.*
- *Eid Greetings.*
- *Global: Poinsettia.*

As a reminder, the cost of a Forever® stamp increased in July from 58 cents to 60 cents.

2022 Holiday Mail-By Dates

Domestic Services

The Postal Service recommends customers in the U.S. visit a Post Office location no later than the dates in the table shown here for expected delivery by December 25 to Air/Army Post Offices/Fleet Post Offices/Diplomatic Post Offices (APOs/FPOs/DPOs) and domestic addresses*. For the complete list of mailing and shipping deadlines, go to about.usps.com/holidaynews.

Domestic Mail Class/Product	Mail-by Date
USPS Retail Ground®	Dec. 17
First-Class Mail® (including greeting cards)	Dec. 17
First-Class Packages (up to 15.99 ounces)	Dec. 17
Priority Mail®	Dec. 19
Priority Mail Express®*	Dec. 23
Alaska to/from Continental U.S. Retail Ground Service	Dec. 2
Alaska to/from Continental U.S. First-Class Mail	Dec. 17
Alaska to/from Continental U.S. Priority Mail	Dec. 17
Alaska to/from Continental U.S. Priority Mail Express	Dec. 21
Hawaii to/from Mainland Priority Mail & First-Class Mail	Dec. 17
Hawaii to/from Mainland Priority Mail Express	Dec. 21

* Not a guarantee, unless otherwise noted. Dates are for estimated delivery before December 25. Actual delivery date may vary depending on origin, destination, Post Office acceptance date and time, and other conditions. Some restrictions apply. For Priority Mail Express shipments mailed December 22 through December 25, the money-back guarantee applies only if the shipment was not delivered, or delivery was not attempted, within two (2) business days.

Note: There is a temporary price increase in effect for all retail and commercial domestic competitive parcels: Priority Mail Express (PME®), Priority Mail (PM®), First-Class Package Service (FCPS®), Parcel Select®, USPS Retail Ground, and Parcel Return Service. International products are unaffected. The temporary rates went into effect October 2 at 12:00 A.M. Central and remain in place until January 22, 2023, at 12:00 A.M. Central. For more information, visit about.usps.com/newsroom/national-releases/2022/0810-usps-announces-proposed-temporary-rate-adjustments.htm.

International Services

We advise customers mailing internationally during the holidays to review the International Services chart for specific deadlines based on the locations they are mailing to and the service they are using. When mailing and shipping internationally, customers must also follow the necessary customs guidelines. For more information, visit the International Shipping page at usps.com/international/preparing-international-shipments.htm.

International Mail Addressed To:	First-Class Package International Service® (FCPIS)	Priority Mail International® (PMI)	Priority Mail Express International® (PMEI)	Global Express Guaranteed® (GXG)***
Africa	Nov. 29	Nov. 29	Dec. 6	Dec. 20
Asia/Pacific Rim	Dec. 6	Dec. 6	Dec. 13	Dec. 20
Australia/New Zealand	Dec. 6	Dec. 6	Dec. 13	Dec. 20
Canada	Dec. 6	Dec. 6	Dec. 13	Dec. 22
Caribbean	Dec. 6	Dec. 6	Dec. 13	Dec. 21
Central and South America	Nov. 29	Nov. 29	Dec. 6	Dec. 20
Europe	Dec. 6	Dec. 6	Dec. 13	Dec. 21
Mexico	Dec. 6	Dec. 6	Dec. 13	Dec. 22
Middle East	Dec. 6	Dec. 6	Dec. 13	Dec. 20

* Not a guarantee, unless otherwise noted. Dates are for estimated delivery before December 25. Actual delivery date may vary depending on origin, destination, Post Office acceptance date and time and other conditions, including customs delays.

***GXG Notes:

1. Cut-off date does not take into account time needed for customs clearance.
2. Allocate extra transit day(s) for delivery outside major cities.

Military Mail

To send packages to loved ones serving in the military abroad, the Postal Service offers a discounted price of \$20.95 on its largest Priority Mail Flat Rate® box. The price includes a \$1.50 per box discount for mail sent to APO/FPO/DPO destinations worldwide.

Priority Mail Flat Rate boxes are available at no cost at local Post Office locations or customers can order them online at usps.com/freeboxes.** Customers may print post-

age, labels, and customs forms online anytime using the Click-N-Ship® feature at usps.com/ship.

To ensure timely delivery of holiday wishes by December 25, 2022, the Postal Service recommends that you send cards and packages to military APO/FPO/DPO addresses overseas no later than the mailing dates listed in the following table*:

Military Mail Addressed To and From:	USPS Retail Ground	First-Class Mail Letters and Cards	Priority Mail	Priority Mail Express Military® Service (PMEMS) ¹
APO/FPO/DPO AE ZIPs 090-092	Nov. 5	Dec. 9	Dec. 9	Dec. 16
APO/FPO/DPO AE ZIP 093	Nov. 5	Dec. 9	Dec. 9	N/A
APO/FPO/DPO AE ZIPs 094-099	Nov. 5	Dec. 9	Dec. 9	Dec. 16
APO/FPO/DPO AA ZIP 340	Nov. 5	Dec. 9	Dec. 9	Dec. 16
APO/FPO/DPO AP ZIPs 962-966	Nov. 5	Dec. 9	Dec. 9	Dec. 16

* Not a guarantee, unless otherwise noted. Dates are for estimated delivery before December 25. Actual delivery date may vary depending on origin, destination, Post Office acceptance date and time, and other conditions. Some restrictions apply.

1. PMEMS: is available to selected military/diplomatic Post Offices. Check with your local Post Office to determine if this service is available to an APO/FPO/DPO address.

** Boxes are delivered within the U.S. with your regular mail usually within 7 to 10 business days. Exclusions apply. For details and to order, visit store.usps.com/store.

*** For details on availability, visit tools.usps.com/schedule-pickup-steps.htm.

Military Care Kit

The Postal Service created a free Military Care Kit based on the items most frequently requested by military families. The kit contains:

1. Two APO/FPO/DPO Priority Mail Flat Rate boxes,
2. Two Medium Priority Mail Flat Rate boxes,
3. Priority Mail tape,
4. Priority Mail address labels, and
5. Appropriate customs forms.

To order the kit, call 800-610-8734. You can find guidelines for packing, addressing, and shipping items to U.S. troops at usps.com/ship/apo-fpo-dpo.htm. To order flat rate boxes featuring the “America Supports You” logo, go to usps.com/freeboxes.

Addressing the Package

Use the following directions to properly address your military mail package:

- Write out the service member’s full name.
- Include the unit and APO/FPO/DPO address with the 9-digit ZIP Code™ (if one is assigned).

For example:

Army/Air Post Office (APO)

COL MELANIE DOE
PSC 3 BOX 4120
APO AE 09021

Fleet Post Office (FPO)

SEAMAN JOSEPH SMITH
UNIT 100100 BOX 4120
FPO AP 96691

Diplomatic Post Office (DPO)

JOHN DOE
UNIT 8400 BOX 0000
DPO AE 09498-0048

- Do not write the country name where the service member is stationed in the address.
- Include a return address.
- Inside the box, include the service member’s name and address as well as the sender’s name and address on an index card in case the shipping label gets damaged in transit.

Busiest Mailing and Delivery Days

Our busiest time is now 2 weeks before Christmas. Starting the week of December 5, customer traffic is expected to increase. The Postal Service predicts that the week of December 11–17 will be the busiest mailing, shipping, and delivery week for the holidays.

Skip the Trip and Ship Online

The Postal Service anticipates December 18 will be the busiest day online. Nearly 150 million customers are expected to visit usps.com during the holidays for help shipping that special holiday gift. And usps.com is always open.

The Click-N-Ship feature (usps.com/ship/online-ship-ping.htm) and other online services allow customers to order free Priority Mail boxes*, print shipping labels, purchase postage, and even request free next-day Package Pickup**.

* Boxes are delivered in the U.S. with regular mail usually within 7 to 10 business days. Exclusions apply. For details and to order, visit store.usps.com/store.

** For details on availability, visit tools.usps.com/schedule-pickup-steps.htm.

New This Year

There is a temporary price increase in effect for all retail and commercial domestic competitive parcels: PME, PM, FCPS, Parcel Select, USPS Retail Ground, and Parcel Return Service. International products are unaffected. The temporary rates went into effect October 2 at 12:00 A.M. Central and remain in place until January 22, 2023, at 12:00 A.M. Central. For more information, visit about.usps.com/newsroom/national-releases/2022/0810-usps-announces-proposed-temporary-rate-adjustments.htm.

Effective June 6, packages containing hazardous materials — in particular, lithium-ion batteries — must now be mailed by surface transportation using Parcel Select Ground or USPS Retail Ground, Parcel Return Service or Ground Return Service. The Postal Service issued the new requirements for shipping used electronics and other hazardous materials because items of this nature can cause fires and other dangers to mailers, air carriers, aircraft passengers, and others.

Mailers must now separate all material requiring hazardous markings or labels into identifiable containers. To ensure visibility, these packages must be marked “Restricted Electronic Device” and “Surface Transportation Only,” in addition to any other applicable markings. Customers are not allowed to use Priority Mail Express, Priority Mail, or First-Class Package Service to ship pre-owned, damaged, or defective electronic devices — such as cellphones, laptops, or tablets that contain or are packed with lithium batteries — by air.

Customers can find detailed information on common hazardous, restricted, and perishable materials in Publication 52, *Hazardous, Restricted, and Perishable Mail* (pe.usps.com/text/pub52/welcome.htm).

The Postal Service will offer an expanded package delivery window — including early evening and Sundays, where volume warrants.

The Postal Service has also expanded operational capacity with new equipment and hiring:

- 28,000 peak season hires beginning in October 2022.
- 137 additional package processing machines deployed before the holidays this year.
- Total of 249 new machines since the beginning of 2021.
- 60 million total packages processed daily this holiday season, compared to 53 million last year.
- 23 temporary peak annexes, in addition to the 48 parcel support annexes opened last year, which adds 8.5 million additional square feet to support processing and distribution operations.

Custom Solutions for Sending Holiday Packages

The Postal Service is uniquely qualified to deliver the holidays by offering a variety of custom solutions designed to make sending holiday packages easy:

- For safety reasons, effective June 6, packages containing hazardous materials — in particular, lithium-ion batteries — must now be mailed by surface transportation using Parcel Select Ground or USPS Retail Ground, Parcel Return Service or Ground Return Service. Customers are not allowed to use Priority Mail Express, Priority Mail, or First-Class Package Service to ship pre-owned, damaged, or defective electronic devices — such as cellphones, laptops, or tablets that either contain or are packed with lithium batteries — by air. Customers can find detailed information on common hazardous, restricted, and perishable materials in Publication 52, *Hazardous, Restricted, and Perishable Mail* (pe.usps.com/text/pub52/welcome.htm).
- Packages that have stamps as postage and are more than one-half inch thick and/or weighing more than 10 ounces *must* be taken to a retail counter for drop off. Alternatively, customers can use a self-service kiosk for a postage label and drop off the package in a Post Office package slot, *not* a mail slot.
- Get free Priority Mail and Priority Mail Express boxes and envelopes in Post Offices or online at usps.com/freeboxes.
- Skip the line and use self-service kiosks located in larger Post Offices to weigh, pay postage, and deposit your packages.
- Use the Click-N-Ship feature online at usps.com/ship/online-shipping.htm to create shipping labels with USPS Tracking®, pay postage, or use flat rate shipping products to avoid weighing packages.
- With free Package Pickup, your package can be handed to your mail carrier on his or her regular delivery route or you can schedule a pickup. For details on availability, visit usps.com/pickup.

- Customers can also take any package to the retail counters at any Post Office location.

* Boxes are delivered in the U.S. with regular mail usually within 7 to 10 business days. Exclusions apply. For details and to order, visit store.usps.com/store.

Custom Solutions to Help with Receiving Holiday Packages

The Postal Service also offers a variety of custom solutions designed to make receiving holiday packages more convenient:

- Informed Delivery® (informedelivery.usps.com) is the free daily digital preview of what is coming to your mailbox. You can see what mail is coming to your mailbox, manage your packages by providing delivery instructions or reschedule delivery online, and see some exterior images of magazines and catalogs — all from your mobile app, dashboard, tablet, or computer.
- Customers can also request that packages be held at a Post Office by choosing the Hold for Pickup option in the Informed Delivery app (informedelivery.usps.com), or online at reg.usps.com/login?app.
- Customers who know they won't be home when a package is delivered can use USPS Package Intercept® (usps.com/manage/package-intercept.htm). Before delivery, most domestic package shipments can be redirected back to the sender, to a new address (a neighbor, perhaps), or to the Post Office to be held for pickup.

Help Customers Avoid a Shipping Glitch

There are a number of things that customers can do to ensure their holiday mail gets delivered safely and correctly:

- Print addresses clearly and include all address elements, such as apartment number or PO Box number, and directional information as applicable (e.g., 123 S. Main St., Apt. 2B).
- Don't send materials that are prohibited, such as fireworks or ammunition. Hazardous materials like perfumes, aerosols, or lithium batteries are mailable with restrictions. For more information, visit pe.usps.com.
- Items powered by dry-cell batteries sometimes turn on during handling and emit a light, buzz, beep, or tick. Ensure your device is powered off or package batteries separately (preferably in the original manufacturer's packaging). **Note:** Specific packaging requirements apply to lithium batteries. For more information, see Publication 52, *Hazardous, Restricted, and Perishable Mail* (pe.usps.com/text/pub52/welcome.htm).
- Place a card inside the package that contains the delivery and return address. This ensures the package can be delivered or returned if the mailing label gets damaged or falls off.

- Never guess a ZIP Code. NO ZIP is better than a WRONG ZIP. Look up a ZIP Code at usps.com under Quick Tools.
- Include both “to” and “from” information on packages and only on one side.
- Do NOT reuse mailing boxes — they weaken in the shipping process.
- Select a box that is strong enough to protect the contents. Priority Mail and Priority Mail Express boxes are free at the local Post Office.
- Leave space for extra cushioning inside. Stuff glass and fragile, hollow items, like vases, with newspaper or packing material, to avoid damage. When mailing framed photographs, take the glass out of the frame and wrap it separately.

Social Media Posts

Consumers can also find more information and interact with us via our social media pages on Facebook (facebook.com/usps), Twitter (twitter.com/usps), Instagram (instagram.com/uspostalservice), Pinterest (pinterest.com/uspsstamps), and LinkedIn (linkedin.com/company/usps).

Subscribing to the USPS YouTube Channel (youtube.com/user/uspstv/custom) will help consumers see new tools the Postal Service is offering to help make mailing and shipping easier, “how to” videos (youtube.com/playlist?list=PL1NEtJgO49CVxEQebq6rvJkRE5UXel2pM), and more.

2022 Holiday Information

Holiday Advertising Campaign

The 2022 holiday campaign will feature direct mail, TV, radio, print, digital, and social media promotions highlighting the organization’s proud tradition of delivering cheer and value to consumers and businesses.

Holiday Newsroom

Customers can find news releases, shipping deadlines, fact sheets, how-to videos, and much more by visiting the holiday newsroom at about.usps.com/holidaynews.

Holiday Hiring

The Postal Service will be hiring seasonal employees across the country to meet operational needs and the needs of our customers. Hiring decisions are made at a local level. Instead of just hiring seasonally, the Postal Service is focusing its resources on actively hiring year-round.

Employee Tipping

All Postal Service employees, including mail carriers, must comply with the Standards of Ethical Conduct for Employees of the Executive Branch. Under these federal

regulations, carriers may accept a gift worth \$20 or less (this includes store, restaurant, or mall gift cards). However, carriers must never accept cash and cash equivalents, such as checks or gift cards that can be used like credit cards (with Visa, MasterCard, or American Express logos) for any amount.

Carriers and Dogs

The Postal Service asks customers to place their dogs in a separate room before opening the front door to accept packages from carriers. Dogs are protective in nature and have been known to jump through screen doors and squeeze through door openings. More than 5,800 carriers were attacked by dogs last year. We want everyone to get home safely each day.

Get the North Pole Postmark on Your Holiday Greetings



**SEASON'S GREETINGS
NORTH POLE STATION
NORTH POLE, AK 99705**

To help friends and family get into the holiday spirit, the Postal Service offers the opportunity for you to get a North Pole Postmark on all your holiday greetings. Follow these simple steps:

1. Personalize greeting cards as usual and insert them into envelopes.
2. Address the envelopes and apply the appropriate postage (such as one of the seasonal Forever stamps) to the envelopes.
3. Put all the stamped envelopes in a larger envelope or a Priority Mail box.
4. Put appropriate postage on the larger envelope or box and take to a Post Office location for mailing.
5. We recommend putting your greetings in the mail by December 2. This will help ensure that the cards and letters can be received in Anchorage, AK, in time to postmark the stamp and get them back in the mailstream by December 25.
6. If customers miss the December 2 deadline, use Priority Mail Express and send cards to:

**NORTH POLE POSTMARK
POSTMASTER
4141 POSTMARK DR
ANCHORAGE AK 99530-9998**

Get an “Official” Letter from Santa for Your Children

Note: Getting a letter from Santa is NOT the same as USPS Operation Santa.

Help children receive written responses from the big guy at the North Pole. Follow these simple steps to get a letter from Santa complete with a North Pole Postmark:

1. Have your child write a letter to Santa and place it in an envelope addressed to Santa Claus, North Pole.
2. Later, when alone, open the envelope and write a personalized response to the child on the back of the letter. Don't forget to sign it from Santa!
3. Insert the response letter into a separate envelope and address it to the child.

4. Add the return address to the envelope:
Santa Claus, North Pole.
5. Affix a First-Class Mail stamp to the envelope.
6. Place the complete envelope into a larger envelope (preferably a Priority Mail Flat Rate envelope) with appropriate postage and address it to:

NORTH POLE POSTMARK
POSTMASTER
4141 POSTMARK DR
ANCHORAGE, AK 99530-9998

To ensure cards and letters are received in Anchorage, AK, in time to postmark the stamp for receipt by December 25, the recommended mail-by date is December 2.

— *Public Relations,*
Corporate Communications, 10-20-22

Policies, Procedures, and Forms Updates

Manuals

DMM Revision: Addressing Military Mail

Effective January 22, 2023, the Postal Service™ will revise *Mailing Standards of the United States Postal Service*, Domestic Mail Manual (DMM®), section 703.2.2.1, to clarify required delivery address line military address types.

Currently, DMM 703.2.2.1b provides three delivery address line military address types: “CMR” (Consolidated Mail Room), “PSC” (Postal Service Center), and “UNIT.” The Postal Service is renaming “CMR” as “CPR” (Consolidated Postal Room). The Postal Service is also adding “OPC” (Official Postal Center) and “UPR” (Unit Postal Room) to eligible delivery address line military address types listed in the DMM. This revision will provide consistency within Postal Service materials.

Although the Postal Service will not publish these revisions in the DMM until January 22, 2023, the standards are effective immediately.

Mailing Standards of the United States Postal Service, Domestic Mail Manual (DMM)

* * * *

700 Special Standards

703 Nonprofit USPS Marketing Mail and Other Unique Eligibility

* * * *

IMM Revision: Availability of Electronic USPS Delivery Confirmation International Service

Effective October 30, 2022, the Postal Service™ will revise *Mailing Standards of the United States Postal Service*, International Mail Manual (IMM®), Exhibit 252.22, to reflect that Electronic USPS Delivery Confirmation International service (E-USPS DELCON INTL®) is available to India and Slovak Republic (Slovakia) (as of October 30, 2022, for both).

Mailing Standards of the United States Postal Service, International Mail Manual (IMM)

* * * *

2 Conditions for Mailing

2.0 Overseas Military and Diplomatic Post Office Mail

* * * *

2.2 Addressing Military Mail

2.2.1 Overseas Address

* * * *

[Revise the text of item b. to read as follows:]

- b. Line 2: The delivery line (the second line from the bottom in the address) must show one of the following military address types and number; and box number assigned, when applicable:

1. “CPR” (Consolidated Postal Room).
2. “OPC” (Official Postal Center).
3. “PSC” (Postal Service Center).
4. “UPR” (Unit Postal Room).
5. “UNIT.”

* * * *

The Postal Service will incorporate these revisions into the January 22, 2023, edition of the online DMM, which is available via Postal Explorer® at pe.usps.com.

— Product Classification,
Product Solutions, 10-20-22

* * * *

250 First-Class Package International Service

* * * *

252 Eligibility

* * * *

252.2 Electronic USPS Delivery Confirmation International Service (E-USPS DELCON INTL)

* * * *

252.22 Availability

* * * *

Exhibit 252.22

Countries Accepting Electronic USPS Delivery Confirmation International Service (E-USPS DELCON INTL)

[Revise the list by adding the following two entries in alphabetical order: India and Slovak Republic (Slovakia).]

* * * * *

Although effective October 30, 2022, the Postal Service will incorporate this revision into the next edition of the online IMM, which is available via Postal Explorer® at pe.usps.com.

— Product Classification,
Product Solutions, 10-20-22

IMM Revision: Individual Country Listing for Saudi Arabia

Effective October 20, 2022, the Postal Service™ is revising the Individual Country Listing for Saudi Arabia in *Mailing Standards of the United States Postal Service, International Mail Manual (IMM®)* to note that Saudi Post requests that the mailer include a short address as part of the delivery address for mail destined to Saudi Arabia.

This revision is based on a formal request that Saudi Post (the designated operator of Saudi Arabia) made through the Universal Postal Union via *International Bureau Circular 77*, dated May 30, 2022.

Mailing Standards of the United States Postal Service, International Mail Manual (IMM)

* * * * *

Individual Country Listings

* * * * *

Saudi Arabia**Country Conditions for Mailing**

* * * * *

Observations

* * * * *

[Add a new entry to read as follows:]

3. Saudi Post requests that all mail sent to Saudi Arabia include a short address as part of the delivery address.

The short address comprises the elements shown in the following example:

Region code	Branch code	Division code	Unique letter	Building number	Short address
R	A	G	I	2929	RAGI2929

The short address is to appear as a separate line below the addressee information and above the delivery address information, as follows:

Addressee: Mohammed Dayan
 Short address code: RAGI2929
 Building number and street name: 2929 Rayhanah Bint Zaid
 Secondary number and district: 8118 Al Arid District
 Postcode: 13337
 Locality: RIYADH
 Country name: SAUDI ARABIA

The addressee's mobile number, if available, is also required for items sent to individuals.

See sponline.com.sa/en/national-address-1.

* * * * *

Although effective October 20, 2022, the Postal Service will incorporate this revision into the next edition of the online IMM, which is available via Postal Explorer® at pe.usps.com.

— Product Classification,
Product Solutions, 10-20-22

Handbooks

Handbook EL-814 Revision: Update of Postal Employee's Guide to Safety

Effective October 20, 2022, the Postal Service™ is revising Handbook EL-814, *Postal Employee's Guide to Safety*, for clarity and to update information.

The Postal Service will publish the revisions in the next edition of online Handbook EL-814, which is expected to post later this year or in early 2023. The revised handbook will also be printed.

The standards will not be effective until they have been published.

Handbook EL-814 is available on the PolicyNet website:

- Go to blue.usps.gov.
- In the left-hand column, click *Essential Links*, and then click *PolicyNet*.
- Go to the right-hand side under "Published Forms and Directives."
- Click *Handbooks*.

The direct URL for the Postal Service PolicyNet website is blue.usps.gov/cpim.

— Occupational Safety and Health,
Human Resources, 10-20-22

Publications

Publication 685 Revision: Postage Assessment Process Table

Effective October 20, 2022, the Postal Service™ is revising Publication 685, *Publication for Streamlined Mail Acceptance for Letters and Flats*, to replace the current table in Exhibit 7-3, "Postage Assessment Process," with a new table that includes new minimum value changes for postage assessment that became effective September 1, 2022. Customers will see these changes reflected in their October 2022 Mailer Scorecard.

The new minimum assessment values for adjusted postage due across Full Service, eInduction®, and Seamless/Automated Verifications are less than \$500.00. The adjusted postage due for Move Update is less than \$50.00.

The Mailer Scorecard provides a dashboard view of the results of the letter and flat mailing activity with the Postal Service over a calendar month. Verifications are performed and errors are calculated on the mailings submitted during

that month up until the 10th day of the following month. This aggregated data is updated daily and measured against established thresholds.

Although the Postal Service will publish these revisions in a future edition of Publication 685, the standards are effective immediately.

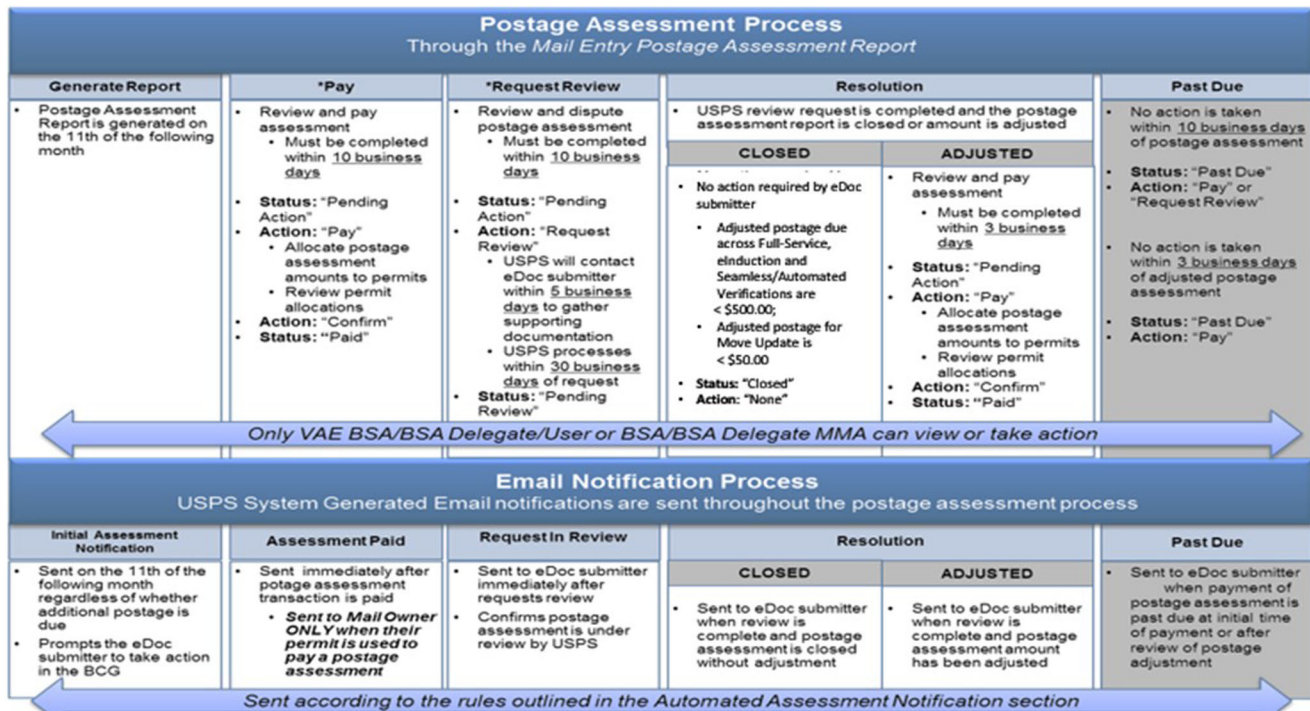
Publication 685, *Publication for Streamlined Mail Acceptance for Letters and Flats*

	*	*	*	*	*
7	Postage Assessment After Verification				
	*	*	*	*	*
7-3	Assessment Process Overview				

Exhibit 7-3

Postage Assessment Process

[Replace the current table in Exhibit 7-3 with the new table that reads as follows:]



* * * * *

The Postal Service will incorporate this revision into the next edition of online Publication 685, which is available on the PolicyNet website:

- Go to blue.usps.gov.
- In the left-hand column, click *Essential Links*, and then click *PolicyNet*.

- Go to the right-hand side under "Published Forms and Directives."
- Click *Publications*.

The direct URL for the Postal Service PolicyNet website is blue.usps.gov/cpim.

— Product Payment and Policy Support,
Product Solutions, 10-20-22

Organization Information

Environmental Management

Recycling Change: Inkjet, Toner Cartridges Affected

As of October 18, the USPS BlueEarth® Federal Recycling Program (about.usps.com/what/corporate-social-responsibility/sustainability/greening-business) is revising its eligible recyclable products list on fedrecycling.com to temporarily remove inkjet and toner cartridges.

This move is the result of a recycling supplier unexpectedly withdrawing from the recycling market. The Offices of Environmental Affairs and Corporate Sustainability and Supply Management are developing new processes for handling used inkjet and toner cartridges.

Planning is underway to return these items to the list as soon as possible. More information will be made available concerning the recycling of these products at a later date.

The Postal Service™ annually diverts more than 277,000 tons of waste — including paper, cardboard, plastic, and other materials — from landfills as part of the organization's commitment to sustainability and green initiatives.

For more information, contact HQInvestmentRecovery@usps.com.

— Environmental Affairs and Corporate Sustainability
and Supply Management, 10-20-22

Finance

Christmas Pay Procedures for Rural Carriers

The 2022 Christmas period for rural carriers begins Saturday, December 3, 2022 (Week 1, Pay Period (PP) 26-2022), and ends Friday, December 23, 2022 (Week 1, Pay Period 01-2023). During this period, certain timekeeping and pay rules apply. Timekeepers, including postmasters, supervisors, and other employees responsible for rural carrier time and attendance recording, must become familiar with Article 9.2.K., Christmas Allowances and Procedures, of the 2021–2024 USPS/National Rural Letter Carriers' Association (NRLCA) Agreement.

This article describes:

- Types of compensation to which rural carriers are entitled during the Christmas period.
- Related timekeeping procedures and regulations for the Christmas period.
- Special rules that begin with the start of the Guarantee Year (October 8, 2022) and continue through the end of the Christmas period (December 23, 2022).

The preferred method of timekeeping data entry is through the Rural Management Support System (RMSS) web application. The following information provides USPS® guidelines for Rural Carrier compensation during the designated Christmas period. These instructions are designed for Manual Timekeeping and TACS data entry.

We included exhibits to help you complete the following:

- PS Form 1314, *Regular Rural Carrier Time Certificate*, and
- PS Form 1314-A, *Auxiliary Rural Carrier Time Certificate*.

Table of Exhibits

- Exhibit 1 — Regular Carrier Works in Excess of Route's Evaluation
- Exhibit 2 — Regular Carrier Not on Relief Day Work List Works Relief Day (Week 2) and Does Not Receive an X Day in the Same Pay Period
- Exhibit 3 — Regular Carrier Works Designated Holiday
- Exhibit 4 — Regular Carrier Provides Christmas Assistance
- Exhibit 5 — FLSA Code A Regular Carrier
- Exhibit 6 — Designation 74 Works Designated Holiday
- Exhibit 7 — Designation 74 Provides Christmas Assistance on Relief Day
- Exhibit 8 — Replacement Carrier Provides Christmas Assistance on a Regular Route
- Exhibit 9 — Replacement Carrier Provides Christmas Assistance on an Auxiliary Route
- Exhibit 10 — Nonrural Employee Provides Christmas Assistance on Rural Route (EMA Only)
- Exhibit 11 — Designation 79 Provides Christmas Assistance on Assigned Auxiliary Route
- Exhibit 12 — RCA Provides Auxiliary Assistance and Christmas Assistance on an Auxiliary Route

Overtime During the Christmas Period

Regular Carriers (Des 71) — FLSA B

Types of Overtime

During the Christmas period, regular rural carriers are eligible for two types of overtime — FLSA overtime and Christmas overtime.

FLSA Overtime

FLSA overtime is paid at all times of the year, not just during the Christmas period. Regular rural carriers are paid FLSA overtime under two circumstances:

- a. Hours worked in excess of 12 hours in a day. If a carrier works more than 12 hours in a day, the amount over 12 is entered in the Daily Overtime block on PS Form 1314.
- b. Hours worked in excess of 56 in a week. These hours are calculated automatically when the total weekly work hours are greater than 56, so no separate entries are required.

Christmas Overtime

Christmas Overtime is paid only during the designated Christmas period. Regular rural carriers are paid Christmas overtime under two circumstances:

- a. Christmas Assistance — This is assistance provided by the regular carrier on his or her relief day. Christmas assistance work hours are entered in the Xmas Assist Work Hours block on PS Form 1314.
- b. Hours worked in excess of the route's evaluation — This is based on the total actual work hours for the week, not on individual days. For example, if a route has a daily evaluation of 9 hours and the regular carrier works 10 hours on 2 days, and 8 hours on the other 3 days, no overtime would be paid. Even though the carrier exceeded the daily evaluation on 2 days of the week, he or she did not exceed the *weekly* evaluation. The weekly evaluation is 45 hours; the carrier worked 44 hours. (See Handbook F-21, part 567, for overtime calculation when leave days are taken during the week and for routes with an evaluation of less than 40 hours.) These hours are calculated automatically, so no separate entries or calculations are required.

Overtime Rate

The overtime rate paid to regular (FLSA Code B) carriers is 150 percent of the carrier's regular rate. The regular rate is determined by dividing the total compensation received for hours actually worked by the carrier since the beginning of the Guarantee Year (not including overtime), by the total number of hours worked since the beginning of the Guarantee Year (not including overtime). This overtime rate is used for both FLSA overtime and Christmas overtime.

Replacement Carriers

Replacement Carriers (Designations 70, 73, 74, 75, 76, 77, 78, and 79) are only entitled to FLSA overtime. For these employees, FLSA overtime is paid for hours worked in excess of 40 in a week.

Regular Carriers (Des 71) — FLSA A

Regular carriers whose FLSA code is A are paid for actual hours worked, not evaluated hours. They are paid overtime for hours in excess of 8 in a day or 40 in a week. For FLSA Code A carriers, enter hours in excess of 8 in a day to the Daily Overtime block on PS Form 1314. Hours in excess of 40 in a week are calculated automatically.

Auxiliary Route Carriers

Carriers serving any auxiliary route are compensated at the **hourly rate** for actual hours worked during PP 26-2022 and Week 1 of PP 01-2023. During this period, carriers are not paid the evaluation of the route. Overtime is paid only when the carrier exceeds 40 hours for the week.

Christmas Assistance

Christmas assistance is additional service provided on a rural route during the Christmas period. For regular carriers, Christmas assistance applies only to assistance given by the carrier, on his or her relief day, while a replacement carrier is assigned to work the full route. For replacement carriers, it applies to any assistance provided on a regular or auxiliary route during the Christmas period. Christmas assistance is reported in the Xmas Assist Work Hours block on PS Form 1314 (for regular carriers) or PS Form 1314-A (for replacement carriers).

Regular carriers can perform Christmas assistance only on their relief day. Therefore, only regular carriers assigned to J or K routes may report Christmas assistance. Regular carriers assigned to route types H or M cannot perform Christmas assistance because these route types do not have a relief day. **Note:** In accordance with an Agreement between the parties, regular rural carriers may perform service on Sunday or provide auxiliary assistance on other routes in the office. This is considered FLSA (daily OT), not Christmas assistance.

Examples of Christmas Assistance:

- A regular carrier comes in on his or her relief day and helps the replacement carrier case the route.
- A regular carrier comes in on his or her relief day and carries part of his or her regular route. (Replacement carrier is listed on PS Form 1314.)
- A replacement carrier carries part of a regular route due to heavy Christmas volume.

These are **NOT** examples of Christmas assistance:

- A regular carrier comes in on his or her relief day, and cases and carries his or her regular route.
- A regular carrier works 2 hours beyond the daily evaluation of his or her regular route.
- A regular carrier performs any work while assigned to an H or M route.

Time Card Blocks Used During the Christmas Period

PS Form 1314 — FLSA Code B Regular Carriers

Name of Assigned Carrier										Finance Number		EIN		Dest/Act		Route Number		FLSA		Year		PP																											
Actual Weekly Hours		Days Assigned Carrier Absent							Daily Overtime		Training Hours		COP Hours		Limited Duty Hours		Relief Hours		Second Trip		Route Dev.		GT Veh		Mileage Omit		Xmas Assist Work Hours																						
Hours 100s		Sat. Mon. Tue. Wed. Thurs. Fri.							Hours 100s		Hours 100s		Hours 100s		Hours 100s		Hours 100s		Min								Hours 100s																						
1									1																		2																						
Hours 100s									Hours 100s		Hours 100s		Hours 100s		Hours 100s		Hours 100s		Min								Hours 100s																						
2									Hours 100s		Hours 100s		Hours 100s		Hours 100s		Hours 100s		Min								Hours 100s																						
										Week 1 Information										Week 2 Information																													
Dest/Act		Name of Relief Carrier					EIN		Actual Weekly Hours		Tr		No EM		EM		Second Trip		Whole Miles Dev +		Omit -		Actual Weekly Hours		Tr		No EM		EM		Second Trip		Whole Miles Dev +		Omit -														
									Hours 100s								Min						Hours 100s								Min																		
									Hours 100s								Min						Hours 100s								Min																		
									Hours 100s								Min						Hours 100s								Min																		
									Hours 100s								Min						Hours 100s								Min																		
This certifies that the above carrier rendered service in compliance with Postal Service regulations										Postmaster's Signature										Date										Carrier's Initials										8127 Time (Min)									
PS Form 1314, August 2009 (Page 1 of 2) PSN 7530-01-1-014-6844										United States Postal Service										Regular Rural Carrier Time Certificate																													

1. Daily Overtime — For FLSA B carriers, this block is used **ONLY** to record when the carrier works more than 12.00 hours in a single day. (See Exhibit 5 for use of this block for FLSA Code A regular carriers. This block is not used for FLSA Code P.) Record the total amount of work hours in excess of 12 per day in this box. *Include the amount of daily overtime in the Actual Weekly Hours block.* For example, if the carrier works 10.00 hours each day, Monday through Wednesday, and works 12.50 on Thursday and 13.00 on Friday, the amount entered into the Daily Overtime block is 1.50 and the amount entered into the Actual Weekly Hours block is 55.50. Do not enter a decimal point when entering work hours.

The Daily Overtime block is **NOT** used to record:

- Hours worked in excess of 56 in a week.
- Hours worked in excess of the route's evaluation.
- Hours worked when the carrier works his or her relief day.
- Additional hours worked by the carrier after completing his or her route (except for those that are over 12 hours for the day).

2. Xmas Assist Work Hours — For FLSA Code B regular carriers, this block is used **ONLY** when the carrier comes in on his or her relief day to *provide assistance*, not to serve his or her full route. A relief carrier must be listed on PS Form 1314 as the replacement carrier for that day. Do **NOT** include the amount of Xmas Assist Work Hours in the Actual Weekly Hours block.

The Xmas Assist Work Hours block is **NOT** used to record:

- Hours worked in excess of 56 in a week.
- Hours worked in excess of the route's evaluation.
- Hours worked when the carrier works his or her relief day and DACA Code R, 3, or 5 is entered on the PS Form 1314.
- Additional hours worked by the carrier after completing his or her route.

PS Form 1314-A — Replacement Carriers/Auxiliary Routes

Name of Assigned Carrier										Finance Number				EIN		Des/Act		Route No.		FLSA Work Days		Year		Pr Xmas Assist Work Hours	
WK	Actual Weekly Hours	Equipment Allowance				N - No Service				Traing Hours	Second Trip	Leave - Whole Hours				Donate	Mil Lv	Court Lv	FSA	Year	Pr Xmas Assist Work Hours				
		Hours	Tr	Miles	GT	Sat	Mon	Tue	Wed			Thur	Fri	Annual	Sick							Other	COP	Hours	100s
1	Hours 100s																						2	Hours 100s	
2	Hours 100s																							Hours 100s	

Des/Act	Name of Relief Carrier	EIN	Week 1 Information				Second Trip	Week 2 Information				Second Trip
			Actual Weekly Hours	Hours	Tr	Miles		GT	Actual Weekly Hours	Hours	Tr	
			Hours 100s				Min	Hours 100s				Min
			Hours 100s				Min	Hours 100s				Min
			Hours 100s				Min	Hours 100s				Min
			Hours 100s				Min	Hours 100s				Min
			Hours 100s				Min	Hours 100s				Min
			Hours 100s				Min	Hours 100s				Min
			Hours 100s				Min	Hours 100s				Min

This certifies that the above carrier rendered service in compliance with Postal Service™ regulations.

Postmaster's Signature

Date

Carrier's Initials

PS Form 1314-A, August 2009 PSN 7530-01-000-9282 (Page 1 of 2)

United States Postal Service® Auxiliary Rural Carrier Time Certificate

1. Route No. — Use the chart below to determine which route number to enter on the PS Form 1314-A when reporting Christmas assistance by replacement carriers or on auxiliary routes.

Christmas Assistance provided on:	Route No. on PS Form 1314-A
Regular route	Actual route #(e.g., K001, J014)
One or more auxiliary routes (Except for Des 79 providing assistance on assigned auxiliary route)	A997 — Combine all Christmas assistance on auxiliary routes on one PS Form 1314-A
Auxiliary route — assistance provided by Des 79 on assigned route	Use PS Form 1314-A for assigned route

2. **Xmas Assist Work Hours** — This block is used whenever a replacement carrier provides Christmas assistance. ***Do not include the amount of Xmas Assist Work Hours in the Actual Weekly Hours block.***

Work on Relief Days and Use of X Days

During the period from the beginning of the Guarantee Year (October 8, 2022), through the last day of the Christmas period (December 23, 2022) — which includes pay periods 22-2022, 23-2022, 24-2022, 25-2022, 26-2022, and 01-2023 (Week 1) — record relief days worked by regular rural carriers on PS Form 1314, as described below.

1. Carriers who work a relief day during this period and who are entitled to a future day off (X day) must be given that X day in the same pay period. Record DACA Code R or 3 on PS Form 1314 for the relief day that is worked, and DACA Code X on the day that is taken off. The Rural Time and Attendance Collection System (RTACS) will not accept any PS Form 1314 that contains a DACA Code 3 or DACA Code R without a corresponding DACA Code X.
2. Record DACA Code 5 on PS Form 1314 for the relief day that is worked if an X day is not taken in the same pay period that the relief day is worked, or if the carrier is on the relief day work list and selects the option

for 150 percent compensation. When DACA Code 5 is entered, the carrier does not receive an X day.

3. Carriers may not use any X days that were earned in previous pay periods during this period. RTACS will not accept any PS Form 1314 that contains a DACA Code X without a corresponding DACA Code 3 or DACA Code R.
4. Carriers must have a sufficient balance of X days available in order to use an X day. Carriers with a negative X day balance cannot use any X days until the negative balance is erased.

Christmas Period Timekeeping Instructions

A. FLSA B Regular Rural Carriers

1. Work on Relief Day — Only regular carriers on J or K routes have an assigned relief day. Any work performed by a regular on his or her relief day must be reported in one of the following ways:
 - a. Regular carries entire route — If the carrier reports on the relief day and cases and carries

the assigned route (as is done on a scheduled day), enter DACA Code R, 3, or 5 (as appropriate) on PS Form 1314 for that day. If the carrier is due an X day for working the relief day (e.g., DACA Code R or 3 is entered), this X day must be granted in the same pay period. If the X day is not granted within the same pay period, DACA Code 5 must be entered on PS Form 1314.

- b. Christmas assistance — If a relief carrier serves the assigned route and the regular carrier provides assistance on the relief day, record the hours worked by the regular as Xmas Assist Work Hours. If additional Equipment Maintenance Allowance (EMA) is due for work performed on the relief day, enter the mileage traveled in whole miles in the Route Deviation block for the appropriate week. Do **NOT** include these hours in the Actual Weekly Hours block. Enter J or K in the appropriate block on PS Form 1314 if the replacement carrier worked a full day on the route.

B. FLSA Code A Regular Carriers

Regular carriers (FLSA Code A) are paid at the regular rate for all hours worked up to 8 per day and 40 per week, and at the overtime rate for all hours worked in excess of 8 per day or 40 per week. FLSA Code A employees are not entitled to any X days as they are paid for working the relief day.

1. Report total hours worked for the week in the Actual Weekly Hours block.
2. If the carrier worked more than 8.00 hours in a day, enter total hours worked in excess of 8 for that day in the Daily Overtime block.
3. If the carrier worked on a scheduled relief day, enter R on the day the carrier worked the relief day and include the hours worked in the Actual Weekly Hours block. The employee is **NOT** entitled to a future X Day.

C. Auxiliary Route Carriers

Carriers serving any auxiliary route are compensated at the hourly rate for actual hours worked during PP 26-2022 and Week 1 of PP 01-2023. During this period, carriers are not paid the evaluation of the route (this includes newly hired RCAs in the first five pay periods of training). The only changes to standard timekeeping procedures for auxiliary routes are when a Designation (Des) 79 provides Christmas assistance on the assigned auxiliary route. (See section E, item 2).

D. Replacement Carriers Assigned to Vacant Regular Routes (Designations 72/74)

1. Designation 72

- a. FLSA B — Procedures are the same as for Des 71 (Regular Carrier), FLSA B.
- b. FLSA A — Procedures are the same as for Des 71 (Regular Carrier), FLSA A.

2. Designation 74

Work on relief day

- a. Carrier worked scheduled relief day:

- (1) Enter R on the day the carrier worked the relief day.
- (2) Include the hours worked in the Actual Weekly Hours block. The employee is **NOT** entitled to a future X Day.

- b. Carrier provided Christmas assistance on relief day:

- (1) Enter the Christmas auxiliary assistance time on PS Form 1314 in the Xmas Assist Work Hours block.
- (2) Do **NOT** include these hours in the Actual Weekly Hours block.
- (3) Enter J or K in the appropriate block on PS Form 1314 if the replacement carrier worked a full day on the route.

E. Replacement Rural Carriers Serving as Christmas Auxiliary Assistants

All replacement carriers serving as Christmas auxiliary assistants are compensated at their regular rate for actual hours worked up to 40 per week, and at the FLSA overtime rate for actual hours worked in excess of 40.

1. Christmas assistance on a regular route:

- a. Manually prepare PS Form 1314-A for each carrier that provides Christmas assistance.
- b. Do **NOT** enter more than one carrier on each PS Form 1314-A.
- c. Submit a separate certificate for each regular route on which the carrier provides assistance.
- d. Report the Christmas assistance hours in the appropriate Week 1 and/or Week 2 Xmas Assist Work Hours block.
- e. Enter EMA hours, trips, and miles in the appropriate Week 1 and/or Week 2 EMA blocks.

2. Christmas assistance on an auxiliary route:

- a. Assigned carrier (Des 79) provided Christmas assistance on assigned auxiliary route:
 - (1) Enter N in the appropriate block in the No Service section of the carrier's PS Form 1314-A for the assigned route.
 - (2) Record hours worked in the Xmas Assist Work Hours block. Only enter Christmas assistance when the Des 79 assists the replacement carrier working the N day.

- (3) Include EMA hours and miles (not trips) in the total for the appropriate week. Trips may not exceed the number of days worked in the No Service blocks.
- (4) A replacement carrier is required to cross-foot the card.
- b. Replacement carrier (Designations 70, 73, 74, 75, 76, and 78) provided Christmas assistance on auxiliary route:
 - (1) Manually prepare PS Form 1314-A. Enter route number A997. Use this route type and number for overburdened service or Christmas assistance on auxiliary routes only.
 - (2) Report the Christmas assistance hours in the appropriate Week 1 and/or Week 2 Xmas Assist Work Hours block.
 - (3) Enter EMA hours, trips, and miles (if applicable) in the appropriate Week 1 and/or Week 2 EMA blocks.
 - (4) If Christmas assistance is performed on two or more auxiliary routes in the same pay period, combine all work hours and EMA data on one manually prepared PS Form 1314-A.

F. Postal Employees (Other Than Rural) Serving as Christmas Auxiliary Assistants

Postal Service employees (other than Des 7X) who provide Christmas assistance on rural routes are compensated at their regular rate of pay for actual time worked. Include all work hours using their normal Time and Attendance System (Manual Timecards or TACS).

Nonrural employees are entitled to EMA payment if a personal vehicle is used. Prepare PS Form 1314-A as follows: (Do **NOT** prepare PS Form 1314-A if a government vehicle is provided.)

- 1. Report the hours worked on the rural routes on PS Form 1230-C, *Time Card*.
- 2. Manually prepare PS Form 1314-A for EMA compensation. Complete indicative data at the top of the certificate. Use Des/Act 99-0, actual route type and number, FLSA code P, and correct employee and pay period information.
- 3. Enter EMA hours, trips, and miles in the appropriate Week 1 and/or Week 2 EMA blocks.

Important Items to Remember: Rural Carrier Christmas Pay Procedures

- Hours entered in the Daily Overtime block are **always** included in Actual Weekly Hours.
- Hours entered in the Xmas Assist Work Hours block are **NOT** included in the Actual Weekly Hours block.
- Carriers on auxiliary routes are paid for actual hours worked, not the route's evaluation, during the Christmas period.
- During the period from the beginning of the Guarantee Year (October 8, 2022) through the last day of the Christmas period (December 23, 2022), a DACA Code X cannot be entered on a timecard unless there is a corresponding DACA Code R or 3 in the same pay period and the carrier's X day balance is zero or greater.
 - DACA R and 3 require a DACA Code X to be used in the same pay period.
- If Actual Weekly Hours exceed 56 hours in a week, a DACA Code 5 must be used. DACA Code R or 3 are not allowed.
- If a regular carrier works his or her relief day and serves his or her assigned route, this is **NOT** reported as Christmas assistance.
- Second trip is not allowed during the Christmas period.

Exhibit 1. Regular Carrier Works in Excess of Route's Evaluation

JAMESON PR								XX-XXXX		XXXXXXXXXX		71-0		K001		B		22		26			
Name of Assigned Carrier								Finance Number		EIN		Des/Act		Route No		FLSA		Year		PP			
	Actual Weekly Hours	Days Assigned Carrier Absent						Daily Overtime	Training Hours	CDP Hours	Limited Duty Hours	Relief Hours	Second Trip	Route Dev.	GT Veh	Miles Omit	Xmas Assist Work Hours						
		Sat.	Mon.	Tue.	Wed.	Thur.	Fri.																
1	4508 Hours 100s	K																					
2	3808 Hours 100s	K					A																
								Week 1 Information								Week 2 Information							
Des/Act	Name of Relief Carrier		EIN		Actual Weekly Hours	Tr	No EM	EM	Second Trip	Whole Miles Dev + Omit -		Actual Weekly Hours	Tr	No EM	EM	Second Trip	Whole Miles Dev + Omit -						
78-0	WAGNER JM		XXXXXXXXXX		0850 Hours 100s	1			Min			1825 Hours 100s	2			Min							
					Hours 100s				Min			Hours 100s				Min							
					Hours 100s				Min			Hours 100s				Min							
					Hours 100s				Min			Hours 100s				Min							
This certifies that the above carrier rendered service in compliance with Postal Service regulations				Postmaster's Signature <i>Bob C. Anderson</i>				Date 12/16/2022				Carriers Initials PJ				8127 Time (Min)							

PS Form 1314, August 2009 (Page 1 of 2) PSN 7530-01-1-014-6844

United States Postal Service **Regular Rural Carrier Time Certificate**

1. A regular carrier is assigned to a 45-hour evaluated route (Daily evaluation = 9.00 hours).
2. The carrier works 45.08 hours in Week 1 and 38.08 hours in Week 2 as follows:

	Week 1 (Hours)	Week 2 (Hours)
Mon	09.00	10.08
Tue	07.90	08.75
Wed	10.28	09.50
Thu	08.90	09.75
Fri	09.00	Annual Leave

3. Carrier will be paid Christmas overtime for 0.08 hours in Week 1 and 2.08 hours in Week 2 based on hours worked over the route's evaluated hours. A day of paid leave will count as one day's evaluation in calculating Christmas overtime. A day of unpaid leave will count as zero.
4. No manual computation for Christmas overtime is necessary. This is automatically computed. No entries are made in the Daily Overtime block.

Exhibit 2. Regular Carrier Not on Relief Day Work List Works Relief Day (Week 2) and Does Not Receive an X Day in the Same Pay Period

JACKSON SC										XX-XXXX			XXXXXXXXXX			71-0		K010			B		22		26								
Name of Assigned Carrier										Finance Number			EIN			Des/Act		Route No			FLSA		Year		PP								
		Actual Weekly Hours		Days Assigned Carrier Absent						Daily Overtime		Training Hours		COP Hours		Limited Duty Hours		Relief Hours		Second Trip		Route Dev		GT Veh		Miles Omit		Xmas Assist Work Hours					
		3565		K																													
1		Hours 100s								Hours 100s		Hours 100s		Hours 100s		Hours 100s		Hours 100s		Min						Hours 100s							
2		4875		5														0892		Min						Hours 100s							
										Week 1 Information										Week 2 Information													
Des/Act		Name of Relief Carrier				EIN				Actual Weekly Hours		Tr		No EM		EM		Second Trip		Whole Miles Dev + Omit -		Actual Weekly Hours		Tr		No EM		EM		Second Trip		Whole Miles Dev + Omit -	
78-0		WHEELER DR				XXXXXXXXXX				1650		2						Min				Hours 100s								Min			
										Hours 100s								Min				Hours 100s						Min					
										Hours 100s								Min				Hours 100s						Min					
										Hours 100s								Min				Hours 100s						Min					
This certifies that the above carrier rendered service in compliance with Postal Service regulations										Postmaster's Signature <i>Bob C. Anderson</i>										Date 12/16/2022				Carriers Initials SJ				8127 Time (Min)					

PS Form 1314, August 2009 (Page 1 of 2) PSN 7530-01-1-014-6844

United States Postal Service **Regular Rural Carrier Time Certificate**

1. A regular carrier is required to work the second relief day of Pay Period 26. The carrier initially selects the option to receive a future X day (DACA 3). However, the carrier does not get an X day in the same pay period.
2. Enter DACA Code 5 on the relief day (Saturday) of Week 2.
3. The carrier is paid 150 percent of one day's evaluation for working the relief day and does not receive a future X day.

Pull-Out Information

Fraud

Invalid USPS Corporate Account Numbers

Provide this listing to Contract Postal Units and acceptance clerks in non-POS locations without intranet access to validate a USPS Corporate Account (USPSCA) number online. For all other locations, online USPSCA validation is preferred. This list supersedes all previous notices, which you must recycle.

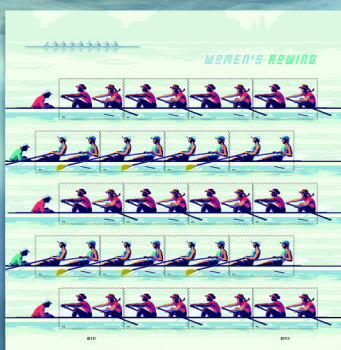
Acceptance clerks must not accept Priority Mail Express® shipments bearing an invalid USPSCA number in the “Payment by Account” or “Agreement Number” section of the label or form.

Note: The first 6 digits of a 9-digit Custom Designed Service and Next Day Pickup Agreement make up the Corporate Account Number.

006086	014048	061249	102669	125068	301429	402315	551326	553860	730897	871030	937873	981831
006130	014682	064585	105033	125338	301583	423075	551360	554022	731042	900111	940601	981882
006161	019913	070191	105322	126052	326644	432754	551390	554308	731406	902348	948507	982039
006810	020148	075004	105341	127018	326667	436405	551461	554690	731466	902627	951048	982427
006994	021002	075081	105395	127053	327084	452094	551477	554935	731967	911225	951188	982435
007201	021048	077255	105402	132194	327271	452180	551511	554960	740331	914028	958789	982693
007353	021647	077415	105453	152218	331013	460169	551714	557002	741557	915559	968466	983045
007362	022028	080217	105631	152555	331238	470031	551842	558095	741571	915590	976012	984005
008107	022935	080254	106001	154019	332691	480966	551904	559030	741612	920111	977051	988022
008195	023196	080287	107324	159061	333585	482601	551953	581184	741615	921429	980232	989051
008257	025391	080436	108020	159117	334055	485140	551986	585254	741668	921613	980352	990829
008289	027330	080529	108892	165333	334195	532542	551991	605166	741782	921730	980405	992082
008403	030233	080632	108951	191087	334466	537365	553012	722090	741872	921747	980418	992377
008415	033016	080682	108958	191396	336079	544084	553013	723085	745019	921855	980461	992705
008469	038214	093099	109148	200799	337149	551020	553042	724024	748020	927885	980491	
008535	040001	097923	109149	220284	337394	551045	553046	730034	750049	931726	980623	
008582	041024	098607	109871	220381	340640	551163	553209	730134	775015	932748	980769	
008656	041149	100050	117095	221522	344058	551200	553232	730217	784414	933154	980824	
008746	041311	100083	120281	232180	349198	551251	553471	730452	785494	934015	980893	
008862	052004	100084	121285	232403	381569	551257	553737	730504	801600	937653	980963	
009142	054106	100993	122433	254016	400063	551266	553740	730875	857003	937866	981750	

— Product Information Requirements, Mail Entry and Payment Technology, 10-20-22

Experience the Competitive Spirit of
Women's Rowing
Forever® Stamps



ON SALE NATIONWIDE: MAY 13, 2022
Sold as a full pane.

Missing, Lost, or Stolen U.S. Money Order Forms

Do Not Cash — Upon Receipt, Notify Local Postal Inspectors

Provide this listing to all Postal Service™ employees responsible for accepting and cashing postal money orders. Destroy all interim notices when the numbers listed appear in the *Postal Bulletin*. The new money order serial

numbers consist of the first 10 digits. The eleventh digit is a check digit only.

Do not cash outdated money orders **104 151 601 to 692 600 000**. Advise holders to send invalid money orders to Canada Post Corporation, Ottawa, Canada K1A 0B1. Check for altered dollar amounts by holding money orders to the light.

010 001 0200 to 0299	043 205 5922 to 5999	083 784 8886 to 8899	174 281 9347 to 9399
010 504 1932 to 1999	044 087 3457 to 3499	083 913 6915 to 6999	175 251 2600 to 0699
011 582 1889 to 1899	044 087 4000 to 4099	084 478 3920 to 3999	176 281 7937 to 7950
011 588 2900 to 3099	044 226 2487 to 2512	086 000 8271 to 8299	176 281 7963 to 7999
012 441 0784 to 0799	044 306 4200 to 4299	086 798 3840 to 3849	176 731 6586 to 6599
012 579 5675 to 5699	044 306 4370 to 4599	088 404 4472 to 4499	178 254 5000 to 9999
013 289 6176 to 6199	045 524 4121 to 4298	088 404 5584 to 5699	178 881 9900 to 9999
013 610 0014 to 0099	046 800 9870 to 9899	088 757 8688 to 8699	180 031 2089 to 2098
014 932 1000 to 1099	047 352 4000 to 4099	088 757 9400 to 9499	180 403 7723 to 7741
014 972 0800 to 0899	048 383 7650 to 7659	089 358 2248 to 2257	180 428 4580 to 0599
015 363 0065 to 0099	048 396 3647 to 3699	090 663 9678 to 9684	182 368 7544 to 0599
017 028 3200 to 3299	051 142 0755 to 0799	091 818 0071 to 0099	182 475 3229 to 3258
018 569 5333 to 5399	051 774 8857 to 8899	093 106 9346 to 9355	182 475 3904 to 3933
018 986 5264 to 5299	051 781 2875 to 2885	093 203 0500 to 0599	182 631 0031 to 0099
019 518 2814 to 2899	051 977 7010 to 7023	093 684 3630 to 3699	182 911 6539 to 6600
020 698 5159 to 5199	052 058 7115 to 7199	094 081 5074 to 5099	184 218 2760 to 2799
020 844 7307 to 7399	054 450 1130 to 1167	094 216 2555 to 2599	185 828 1474 to 1499
020 972 8948 to 8999	057 670 0563 to 0599	094 580 7062 to 7099	186 132 7583 to 0599
022 021 9110 to 9181	058 187 3836 to 3899	094 639 4200 to 4299	186 629 0589 to 0599
022 037 1411 to 1499	058 523 3003 to 3099	095 070 7186 to 7199	187 184 6177 to 0199
022 527 9201 to 9210	058 591 1153 to 1299	095 076 8300 to 8399	187 323 8200 to 8299
022 529 1882 to 1899	058 895 3746 to 3799	095 354 6864 to 6899	187 441 6080 to 6099
023 637 7169 to 7199	059 986 0814 to 0899	097 224 1350 to 1599	188 831 6774 to 6799
024 380 4100 to 4199	060 406 7650 to 7699	100 160 3800 to 3899	188 835 6370 to 6399
024 496 6870 to 6896	063 491 8122 to 8199	104 667 6400 to 6499	189 083 1064 to 1099
025 092 0987 to 0999	063 916 9968 to 9999	104 876 8937 to 8999	189 660 9583 to 9599
025 369 5535 to 5599	064 091 4500 to 4599	112 049 4413 to 4499	191 179 0377 to 0399
025 729 1151 to 1199	065 170 0471 to 0499	112 870 9765 to 9799	192 050 5762 to 5781
025 729 1643 to 1799	065 255 7909 to 7999	113 319 2000 to 2099	194 456 8600 to 0699
026 492 3180 to 3199	065 392 6345 to 6399	114 402 3850 to 3899	195 194 6881 to 6899
027 361 0430 to 0499	066 099 2014 to 2099	114 866 5368 to 5397	195 874 1112 to 1199
027 369 4482 to 4495	066 648 2880 to 2899	116 154 2800 to 2899	196 979 0524 to 0599
027 671 8762 to 8776	066 787 3639 to 3699	116 986 4400 to 4499	197 244 6100 to 6199
027 787 9886 to 9899	066 845 7500 to 9999	117 175 1647 to 5169	197 244 6300 to 6399
027 965 9487 to 9499	067 093 3869 to 3899	117 951 4687 to 4699	197 244 6400 to 6499
028 100 8069 to 8099	068 895 0334 to 0399	117 951 5200 to 5299	197 244 6500 to 6599
028 191 1852 to 1999	070 724 4488 to 4499	119 786 3051 to 3064	197 244 6600 to 6699
028 850 3000 to 3199	070 841 9181 to 9199	119 815 9861 to 6199	197 244 6700 to 6799
029 510 1500 to 1599	070 844 2546 to 2599	119 850 7400 to 7499	197 244 6800 to 8999
030 687 0903 to 0999	070 916 1340 to 1399	119 850 7700 to 7999	198 285 2556 to 2566
030 701 3442 to 3499	071 047 5768 to 5799	121 634 0460 to 0499	199 105 0778 to 0799
031 077 4507 to 4799	071 179 9800 to 9899	122 451 9879 to 9899	199 678 2968 to 2999
032 295 7500 to 9999	071 386 3682 to 3699	122 714 6805 to 6900	202 748 5133 to 5199
034 394 1000 to 1099	071 507 6840 to 6899	124 916 0304 to 0499	202 748 5245 to 5299
034 943 0400 to 0799	072 045 9641 to 9699	126 423 0136 to 0169	202 748 5300 to 5399
035 035 4337 to 4399	072 675 8287 to 8299	127 500 2328 to 2399	202 748 5400 to 5499
037 312 7500 to 7599	073 763 0867 to 0876	160 901 2254 to 2299	203 256 1240 to 1299
037 706 9578 to 9599	073 763 0878 to 0887	161 103 6581 to 6599	204 230 3577 to 3595
037 805 3677 to 3699	073 763 0889 to 0898	161 194 2857 to 0899	205 019 0174 to 0199
037 909 5490 to 5499	077 617 5481 to 5499	162 032 4447 to 4499	206 936 3184 to 3199
037 931 4660 to 4699	077 999 4001 to 4090	163 257 1085 to 1099	207 196 9900 to 9999
039 145 6521 to 6595	078 174 4475 to 4499	164 359 2406 to 2499	207 204 0700 to 0799
040 024 3901 to 3999	078 219 4931 to 4999	166 101 1433 to 1499	207 204 0800 to 0899
040 674 7100 to 7199	078 250 4756 to 4799	167 555 5201 to 5212	207 514 3857 to 3899
040 688 8816 to 8899	078 823 8312 to 8399	167 555 5214 to 5299	208 556 4707 to 4799
041 299 6752 to 6799	079 374 0300 to 2499	169 618 6274 to 6299	210 057 4038 to 4047
041 623 8889 to 8899	079 807 2342 to 2399	171 806 6878 to 6893	210 221 0548 to 0599
041 803 6565 to 6599	082 721 0228 to 0254	173 639 4685 to 4699	214 061 4711 to 4724
043 129 1968 to 1997	083 140 5000 to 7499	174 238 2779 to 2799	214 303 6311 to 6325

214 303 6239	to	6258	252 469 2125	to	2199	258 405 6400	to	6499	262 337 4500	to	4599
214 877 4251	to	4273	252 833 3286	to	3297	258 405 6800	to	6899	262 337 4600	to	4699
215 252 3918	to	3992	253 470 3948	to	3999	258 405 6900	to	6999	262 337 4700	to	4799
217 585 1400	to	1499	253 565 7400	to	7499	258 405 7000	to	7099	262 337 4800	to	4899
218 698 2157	to	2199	254 252 2800	to	2899	258 405 7100	to	7199	262 337 4900	to	4999
218 746 0800	to	0899	254 252 2900	to	2999	258 405 7200	to	7299	262 337 5000	to	5099
219 095 0100	to	0399	254 252 3000	to	3099	258 405 7300	to	7399	262 337 5100	to	5199
219 389 1885	to	1899	254 252 3100	to	3199	258 405 7400	to	7499	262 337 5200	to	5299
219 568 7435	to	7456	254 252 3200	to	3299	258 405 7800	to	7899	262 337 5300	to	5399
219 568 7469	to	7487	254 252 3300	to	3399	258 405 7900	to	7999	262 337 5400	to	5499
221 316 5757	to	5799	254 252 3400	to	3499	258 405 8000	to	8099	262 337 5500	to	5599
223 476 3914	to	3999	254 252 3500	to	3599	258 405 8100	to	8199	262 337 5600	to	5699
223 565 4921	to	4957	254 252 3600	to	3699	258 405 8200	to	8299	262 337 5700	to	5799
223 565 4979	to	4999	254 252 3700	to	3799	258 405 8300	to	8399	262 337 5800	to	5899
224 636 4745	to	4765	254 252 3800	to	3899	258 405 8400	to	8499	262 337 5900	to	5999
224 636 4776	to	4799	254 252 3900	to	3999	258 405 8500	to	8599	262 337 6000	to	6099
224 636 4855	to	4885	254 252 4000	to	4099	258 405 8600	to	8699	262 337 6100	to	6199
224 636 4932	to	4948	254 252 4100	to	4199	258 405 8700	to	8799	262 337 6200	to	6299
224 636 4950	to	4962	254 252 4200	to	4299	258 405 8800	to	8899	262 337 6300	to	6399
224 636 4985	to	4999	254 252 4300	to	4399	258 405 8900	to	8999	262 337 6400	to	6499
224 723 0757	to	0799	254 252 4400	to	4499	258 405 9600	to	9699	262 337 6500	to	6599
224 730 2207	to	2299	254 252 4500	to	4599	258 405 9700	to	9799	262 337 6600	to	6699
225 970 0500	to	0599	254 252 4600	to	4699	258 405 9800	to	9899	262 337 6700	to	6799
225 970 0600	to	0699	254 252 4700	to	4799	258 405 9900	to	9999	262 337 6800	to	6899
225 970 0700	to	0799	254 252 4800	to	4899	259 014 9989	to	9999	262 337 6900	to	6999
227 033 8679	to	8699	254 252 4900	to	4999	259 062 4788	to	4798	262 337 7000	to	7099
227 275 9400	to	9999	254 565 7607	to	7700	259 218 1400	to	1499	262 337 7100	to	7199
228 463 2456	to	2499	254 907 1203	to	1299	259 218 1500	to	1599	262 337 7200	to	7299
228 510 4852	to	4899	255 185 9527	to	9599	259 218 1600	to	1699	262 337 7300	to	7399
229 462 8451	to	8475	255 397 1557	to	1576	259 590 5654	to	5699	262 337 7400	to	7499
229 668 5977	to	5999	255 425 2989	to	2998	259 670 8268	to	8299	262 337 7500	to	7599
229 923 9176	to	9199	255 728 6412	to	6499	259 835 6238	to	6399	262 337 7600	to	7699
229 924 6696	to	6699	255 728 9842	to	9899	259 835 6701	to	6799	262 337 7700	to	7799
230 051 9500	to	9999	256 134 9833	to	9839	260 224 4600	to	4699	262 337 7800	to	7899
236 366 2431	to	2499	256 134 9840	to	9849	260 224 5941	to	5999	262 337 7900	to	7999
236 607 6882	to	6899	256 134 9850	to	9859	260 310 2821	to	2899	262 337 8000	to	8099
236 660 5853	to	5872	256 134 9860	to	9869	260 452 0010	to	0022	262 337 8100	to	8199
239 322 5200	to	5299	256 134 9870	to	9879	260 452 0049	to	4299	262 337 8200	to	8299
239 322 5400	to	5499	256 134 9880	to	9889	260 553 8200	to	8299	262 337 8300	to	8399
239 322 5600	to	5699	256 134 9890	to	9899	260 553 8600	to	8699	262 337 8400	to	8499
239 322 5800	to	5899	256 247 6900	to	6999	260 553 9600	to	9799	262 337 8500	to	8599
239 322 5900	to	5999	256 550 5536	to	5545	260 553 9800	to	9899	262 337 8600	to	8699
239 607 4783	to	4799	256 799 2257	to	2299	260 553 9900	to	9999	262 337 8700	to	8799
240 593 1879	to	1899	257 154 8763	to	8799	260 761 1603	to	1662	262 337 8800	to	8899
242 591 2048	to	2099	257 154 8800	to	8899	261 183 2100	to	2299	262 337 8900	to	8999
242 735 0388	to	0398	257 765 4567	to	4599	261 426 0408	to	0499	262 337 9000	to	9099
242 951 7276	to	7299	257 765 4610	to	4696	262 082 8000	to	8099	262 337 9100	to	9199
243 535 6370	to	6399	257 765 4737	to	4799	262 082 8100	to	8199	262 337 9200	to	9299
244 004 9985	to	9999	257 792 7800	to	7889	262 082 8200	to	8299	262 337 9300	to	9399
244 004 9985	to	9999	257 792 7900	to	7999	262 082 8300	to	8399	262 337 9400	to	9499
244 268 9765	to	9799	257 792 8000	to	8099	262 082 8400	to	8499	262 337 9500	to	9599
244 347 4471	to	4499	257 856 9863	to	9899	262 288 7302	to	7399	262 337 9600	to	9699
249 056 1551	to	1599	258 103 1773	to	1782	262 288 7400	to	7499	262 337 9700	to	9799
249 336 9438	to	9499	258 405 1800	to	1899	262 288 9900	to	9999	262 337 9800	to	9899
249 399 4000	to	4099	258 405 1900	to	1999	262 337 2600	to	2699	262 337 9900	to	9999
249 399 4100	to	4199	258 405 3300	to	3399	262 337 2700	to	2700	262 472 3188	to	3199
249 399 4200	to	4299	258 405 3400	to	3499	262 337 2800	to	2800	262 472 3200	to	3299
249 399 4300	to	4399	258 405 3500	to	3599	262 337 2900	to	2900	262 546 3100	to	3199
249 399 4400	to	4499	258 405 3700	to	3799	262 337 3000	to	3099	262 546 3200	to	3299
249 399 4500	to	4599	258 405 3800	to	3899	262 337 3100	to	3199	262 546 3300	to	3399
249 399 4600	to	4699	258 405 3900	to	3999	262 337 3200	to	3299	262 546 3400	to	3499
249 399 4700	to	4799	258 405 4000	to	4099	262 337 3300	to	3399	262 546 3500	to	3599
249 399 4800	to	4899	258 405 4100	to	4199	262 337 3400	to	3499	262 546 3600	to	3699
249 399 4900	to	4999	258 405 4200	to	4299	262 337 3500	to	3599	262 546 3900	to	3999
250 159 7502	to	7599	258 405 4600	to	4699	262 337 3600	to	3699	262 546 4300	to	4399
250 566 9644	to	9699	258 405 5600	to	5699	262 337 3700	to	3799	262 546 4400	to	4499
250 661 8425	to	8499	258 405 5700	to	5799	262 337 3800	to	3899	262 546 4500	to	4599
251 335 5731	to	5799	258 405 5800	to	5899	262 337 3900	to	3999	262 546 4600	to	4699
251 379 2380	to	2399	258 405 5900	to	5999	262 337 4000	to	4099	262 546 4700	to	4799
252 005 7626	to	7699	258 405 6000	to	6099	262 337 4100	to	4199	262 546 4800	to	4899
252 421 8401	to	8499	258 405 6100	to	6199	262 337 4200	to	4299	262 546 4900	to	4999
252 464 2810	to	2899	258 405 6200	to	6299	262 337 4300	to	4399	262 546 7100	to	7199
252 612 3683	to	3699	258 405 6300	to	6399	262 337 4400	to	4499	262 546 7200	to	7299

262 546 7300 to 7399	389 696 2400 to 2799	410 867 0970 to 0999	435 666 6092 to 6399
262 546 7400 to 7499	389 846 3104 to 3135	411 868 1023 to 1199	436 082 6400 to 6899
262 546 9800 to 9899	389 846 3145 to 3195	411 922 2322 to 2399	436 160 6441 to 6499
262 546 9900 to 9999	389 887 9211 to 9230	412 193 0900 to 0999	437 316 7115 to 7199
262 567 1788 to 1799	389 887 9234 to 9299	412 395 8599 to 8699	437 427 0500 to 3499
263 254 2500 to 2500	390 001 3182 to 3199	412 485 6500 to 6599	439 179 2300 to 2399
263 340 0000 to 0099	390 001 3500 to 3699	412 485 6610 to 6699	439 310 0458 to 0499
263 340 0100 to 0199	390 545 5974 to 5999	412 885 5953 to 5999	440 698 1947 to 1999
263 340 0500 to 0599	391 104 6146 to 6199	414 193 3608 to 3674	440 858 6300 to 6399
263 340 0600 to 0699	391 574 1466 to 1499	414 193 3677 to 3699	440 858 6420 to 7299
263 340 2700 to 2799	391 783 3020 to 3599	414 411 7348 to 7399	441 199 1655 to 1699
263 340 2800 to 2899	391 792 6100 to 6199	414 640 0757 to 0799	443 127 3648 to 3699
263 340 3000 to 3099	392 668 2956 to 2999	414 965 1727 to 1799	443 127 4000 to 4099
264 341 2360 to 2399	392 854 8500 to 8899	417 302 8104 to 8199	443 673 7900 to 7999
264 380 4000 to 4099	393 584 7566 to 7699	417 387 6532 to 6599	443 800 9335 to 9399
264 380 4100 to 4199	393 650 0074 to 0099	417 496 6800 to 6999	444 382 8822 to 8899
264 799 6049 to 6099	393 838 8316 to 8499	417 871 9250 to 9299	444 390 1667 to 1699
264 860 7832 to 7868	393 893 6007 to 6099	417 930 9533 to 9599	444 457 3854 to 3899
265 127 3658 to 3699	394 126 6907 to 6999	418 164 6500 to 6799	450 048 4173 to 4199
265 380 7111 to 7137	394 189 0405 to 0599	418 423 9863 to 9899	450 048 4442 to 4699
265 444 4762 to 4799	394 822 3243 to 3278	418 633 5922 to 5999	450 560 5173 to 5199
265 548 7074 to 7099	394 990 1810 to 1899	418 719 8520 to 8599	450 620 3077 to 3099
266 106 0000 to 2499	395 343 3264 to 3299	418 744 2235 to 2299	450 620 3135 to 3199
266 129 5809 to 5899	395 373 3035 to 3099	418 962 2848 to 2899	450 780 2716 to 2799
266 673 0000 to 2499	395 396 9649 to 9799	419 543 0286 to 0299	450 801 2700 to 2799
266 749 7900 to 7999	395 970 3240 to 3299	419 730 0300 to 0399	451 109 2967 to 2984
266 868 0952 to 0999	397 622 4054 to 4099	420 277 0015 to 0049	451 115 4110 to 4125
266 868 1028 to 1099	397 819 8902 to 8999	420 599 0734 to 0798	451 115 4127 to 4199
266 868 1100 to 1199	398 149 7200 to 7699	420 661 4115 to 4199	451 746 0700 to 0799
266 868 1200 to 1299	399 070 0872 to 0899	420 758 9500 to 9699	452 265 0074 to 0099
267 296 1237 to 1299	399 156 7119 to 7199	420 969 3951 to 3971	452 265 0246 to 0299
267 324 8946 to 8998	399 203 5064 to 5099	420 969 3973 to 3999	452 265 0335 to 0999
268 072 1203 to 1299	399 296 9910 to 9999	421 116 3565 to 3599	452 509 1169 to 1199
271 660 4333 to 4400	399 396 8935 to 8999	421 130 9300 to 9399	452 855 6471 to 6499
273 520 0000 to 9999	399 792 7775 to 7799	421 313 4500 to 4999	452 890 4679 to 4799
273 520 6000 to 8999	399 792 8300 to 8399	421 364 5537 to 5599	452 900 8215 to 8238
273 775 7700 to 7899	400 427 1051 to 1999	421 656 2609 to 2699	453 117 9146 to 9199
273 882 1913 to 1998	401 045 1505 to 1549	421 988 9700 to 9799	453 334 3631 to 3699
274 750 0300 to 0400	401 045 1571 to 1599	422 172 4667 to 4699	453 603 7841 to 7891
274 782 0549 to 0599	401 294 2700 to 2799	422 484 4212 to 4299	453 650 1140 to 1199
302 000 0000 to 9999	401 310 9505 to 9599	422 556 1270 to 1299	453 741 1300 to 1399
349 746 2056 to 2099	401 382 5312 to 5399	422 587 7024 to 7099	454 013 2919 to 2999
350 518 7350 to 7374	402 578 7876 to 7899	422 819 7533 to 7599	454 186 2411 to 2499
360 011 1690 to 1699	403 125 6744 to 6799	422 842 5073 to 5087	454 268 4883 to 4899
360 168 6008 to 6099	403 260 7000 to 7499	422 907 7563 to 7599	454 302 5400 to 5499
360 173 8800 to 8899	403 280 6470 to 6499	424 500 6050 to 6099	454 490 8300 to 8399
360 324 2326 to 2399	403 685 8600 to 8699	424 641 8500 to 8599	454 547 7434 to 7499
362 861 3064 to 3099	404 003 0300 to 0399	424 871 6600 to 6699	454 922 4867 to 4895
373 006 2176 to 2199	404 041 8838 to 8899	425 298 2352 to 2399	455 221 1348 to 1499
374 768 2600 to 2699	404 071 4268 to 4299	425 418 4269 to 4299	455 364 2147 to 2199
375 169 4400 to 4599	404 347 5356 to 5399	425 418 4405 to 4499	455 399 5400 to 5499
375 829 3400 to 3499	404 347 5548 to 5599	426 547 4566 to 4599	455 476 0676 to 0699
375 851 9100 to 9199	404 726 4500 to 4599	427 412 6337 to 6499	455 543 0618 to 0699
376 196 0911 to 0999	404 961 5001 to 5199	427 481 0900 to 0999	456 410 9006 to 9099
378 085 3679 to 3699	405 325 0188 to 0198	428 027 2742 to 2752	456 470 4146 to 4299
378 351 1063 to 1099	406 009 4587 to 4599	429 474 4172 to 4199	456 619 4460 to 4499
379 843 5100 to 5199	406 260 6830 to 6899	429 889 2900 to 2999	457 333 2686 to 2699
380 093 9600 to 9699	406 459 6641 to 6999	430 150 4401 to 4599	457 729 1767 to 1777
380 165 1165 to 1199	406 733 3000 to 3999	430 172 9800 to 9899	457 937 8615 to 8699
381 325 4500 to 4599	407 545 1557 to 1599	430 177 1900 to 2099	458 028 9810 to 9899
381 604 2510 to 2699	407 594 0412 to 0599	430 444 9500 to 9699	458 057 2712 to 2999
381 645 9525 to 9599	407 692 9100 to 9299	430 664 4070 to 4099	458 069 9537 to 9599
383 314 3968 to 3999	407 959 2190 to 2199	432 168 8419 to 8499	458 069 9665 to 9699
383 892 1000 to 1344	408 265 2275 to 2288	432 708 6800 to 6999	458 337 5222 to 5299
383 892 1382 to 1399	408 499 7700 to 7799	432 744 1544 to 1599	458 354 7653 to 7999
384 925 3641 to 3654	408 499 7900 to 7999	432 995 9775 to 9799	458 671 8678 to 8699
385 568 2331 to 2399	408 682 8484 to 8599	433 003 5800 to 5899	458 671 8721 to 8798
385 599 7554 to 7575	408 698 7015 to 7099	433 757 3047 to 3099	458 847 5044 to 5999
385 774 2024 to 2099	409 072 3941 to 3999	433 765 4003 to 4099	459 274 7624 to 7699
386 624 1412 to 1599	410 491 2311 to 2399	434 482 7060 to 7199	459 365 5432 to 5499
386 883 8936 to 8999	410 694 8400 to 8599	434 513 2386 to 2399	459 378 5764 to 5799
387 314 5574 to 5599	410 775 1500 to 1599	434 968 3076 to 3092	459 472 4816 to 4999
387 837 6300 to 6399	410 795 7927 to 7999	435 303 1831 to 1842	460 349 6878 to 6899
388 828 0656 to 0699	410 867 0917 to 0966	435 303 1986 to 1999	460 550 1909 to 1999

460 997 5234	to	5299	480 689 5100	to	5199	503 194 5144	to	5153	609 067 5600	to	5699
461 973 6443	to	6499	481 072 9463	to	9499	503 790 9922	to	9948	609 289 6123	to	6199
462 152 0107	to	0299	481 673 0074	to	0095	504 045 4030	to	4099	609 438 4400	to	4499
462 274 1072	to	1099	482 527 1500	to	1599	504 166 0200	to	0599	609 493 1100	to	1199
462 277 8373	to	8399	482 541 5255	to	5299	504 240 1062	to	1399	609 766 8091	to	8999
462 554 6051	to	6099	482 729 6800	to	6899	504 805 3300	to	3499	609 825 4100	to	4115
463 011 5529	to	5540	483 363 7207	to	7299	505 096 0662	to	0699	609 884 2981	to	2999
463 176 4115	to	4199	483 402 2356	to	2399	505 893 7739	to	7799	609 893 1000	to	1099
463 176 4229	to	4299	483 486 5100	to	5199	505 893 7800	to	7999	610 092 3200	to	3299
463 185 2600	to	2799	483 632 1521	to	1599	506 124 0800	to	0999	610 582 4200	to	4299
463 227 7711	to	7799	483 632 2600	to	2799	506 165 7027	to	0099	611 879 6939	to	6999
463 414 4869	to	4899	483 849 1615	to	1699	506 502 5209	to	5299	612 291 8013	to	8099
463 808 3484	to	3499	484 174 4803	to	5299	506 756 1682	to	1699	612 751 5171	to	5199
463 945 7400	to	7899	484 323 8900	to	9199	506 756 1700	to	1799	612 751 5226	to	5299
464 629 9000	to	9399	484 680 5000	to	5038	506 756 1800	to	1899	612 751 6083	to	6099
464 711 4332	to	4399	484 680 5040	to	5074	506 836 5326	to	5399	612 751 6268	to	6299
465 692 3963	to	3999	484 680 5077	to	5099	508 488 6226	to	6299	612 751 6572	to	6599
465 698 8300	to	8599	485 029 4913	to	4999	508 789 8332	to	8399	612 774 2111	to	2199
465 743 7745	to	7799	486 176 0600	to	0699	508 789 8400	to	8499	612 774 2254	to	2299
466 798 6056	to	6067	486 559 7555	to	7599	509 909 0425	to	0435	612 774 2500	to	2599
467 147 4300	to	4399	486 696 3023	to	3199	510 150 2400	to	2499	614 469 0979	to	0999
468 079 5782	to	5799	488 173 7900	to	7999	510 381 3200	to	3299	614 474 3000	to	3099
469 067 2817	to	2899	488 206 4100	to	4199	510 587 9500	to	9599	614 521 3490	to	3499
469 127 8000	to	8199	488 226 0200	to	0299	510 587 9659	to	9699	614 645 1800	to	1899
469 213 0359	to	0399	488 709 3906	to	3999	510 269 9770	to	9999	614 832 1100	to	2099
469 213 0500	to	0599	488 855 8359	to	8399	511 021 5042	to	5099	615 017 7505	to	7599
469 561 8011	to	8099	489 181 8963	to	8999	511 021 5100	to	5199	617 711 6609	to	6699
469 658 1961	to	1999	489 223 2000	to	2099	511 468 1747	to	1799	617 760 5266	to	5299
469 666 9900	to	9999	489 311 1930	to	1999	511 844 0100	to	0199	617 813 3601	to	3699
469 678 1900	to	1999	489 318 6200	to	6300	511 844 0340	to	0399	618 840 9200	to	9299
469 781 4900	to	4999	489 384 0027	to	0099	512 805 3913	to	3919	619 551 7229	to	7299
469 947 6960	to	6999	489 427 0658	to	0899	513 046 0700	to	0726	619 859 3000	to	3099
470 755 5800	to	5818	489 997 5252	to	5299	513 149 0600	to	0699	620 073 9400	to	9499
471 918 0300	to	0999	490 669 5850	to	6099	513 445 3000	to	3199	621 614 7907	to	7930
471 985 2408	to	2419	490 717 7080	to	7099	513 466 2034	to	2044	621 614 7932	to	7939
472 191 6700	to	6799	490 721 6000	to	6099	513 539 9052	to	9099	621 648 8021	to	8199
472 270 2555	to	2599	490 793 1500	to	2099	513 539 9267	to	9299	621 648 8500	to	8599
472 987 0213	to	0241	490 886 8171	to	8199	513 539 9800	to	9899	621 904 8351	to	8599
472 987 0290	to	0299	490 977 9221	to	9240	513 539 9985	to	9999	621 916 1978	to	1989
473 151 2069	to	2199	491 258 8100	to	9099	513 606 5459	to	5490	622 989 8032	to	8099
473 666 9138	to	9199	491 567 1376	to	1399	513 812 1751	to	1799	623 076 9300	to	9399
473 952 3429	to	3499	492 254 4800	to	4899	514 103 3600	to	3699	623 819 5006	to	5099
474 108 5402	to	5499	492 283 5100	to	5199	514 103 3700	to	3799	623 895 8200	to	8399
474 356 5193	to	5299	492 610 6813	to	6899	514 103 3800	to	3899	623 917 0000	to	0099
474 949 3366	to	3399	493 394 5568	to	5599	600 645 3223	to	3299	623 917 0200	to	0299
475 134 9362	to	9399	493 470 2562	to	2599	601 339 1200	to	1399	624 468 5288	to	5299
475 167 9667	to	9699	493 473 7700	to	7799	601 653 5884	to	5899	624 665 3162	to	3198
475 319 3415	to	3499	493 716 2153	to	2199	601 661 7700	to	7799	625 088 6735	to	6799
475 319 3649	to	3799	494 206 2972	to	2999	601 682 5343	to	5399	625 916 9500	to	9799
475 340 6400	to	6599	494 217 3446	to	3999	601 928 1600	to	1699	625 968 8956	to	8999
475 424 8410	to	8499	494 224 0500	to	0599	602 512 2972	to	2999	627 005 3938	to	3999
475 629 9156	to	9199	495 145 0600	to	0699	602 555 2400	to	2799	627 384 3907	to	4099
475 850 6101	to	6199	496 209 7425	to	7499	602 829 7061	to	7099	627 496 7549	to	7599
475 875 2500	to	2599	496 213 8728	to	8799	603 483 9572	to	9599	627 708 3605	to	3699
476 169 8264	to	8299	496 474 5226	to	5248	603 490 7200	to	7299	627 776 2500	to	2599
476 189 3000	to	3499	497 053 8517	to	8699	603 678 7100	to	7199	628 226 3100	to	3199
476 331 2480	to	2499	497 854 8673	to	8699	603 678 7662	to	7699	628 814 4702	to	4799
477 289 8601	to	8699	498 449 8888	to	8899	603 678 7902	to	7999	628 851 9689	to	9699
477 681 5206	to	5299	498 929 8285	to	8499	603 678 8418	to	8499	629 510 7200	to	7299
478 010 4243	to	4268	498 936 5310	to	5399	603 678 8700	to	9999	629 964 4200	to	4294
478 010 4270	to	4291	499 016 5425	to	5499	604 086 0880	to	0899	630 389 3056	to	3071
478 450 5071	to	5099	499 440 8575	to	8899	604 349 1414	to	1499	630 463 0588	to	0599
478 469 7838	to	7858	499 731 6717	to	6799	604 503 7776	to	7799	631 459 9117	to	9199
478 469 7883	to	7899	500 064 1858	to	1869	605 520 9037	to	9099	631 762 9325	to	9399
479 280 9800	to	9899	500 070 5725	to	7799	605 685 4010	to	4099	632 217 4933	to	4999
479 365 9116	to	9176	501 058 0016	to	0026	605 988 6467	to	6499	632 500 0000	to	640 3999
479 412 9900	to	9999	501 331 0300	to	0399	607 689 7951	to	7960	633 110 4165	to	4199
479 667 6190	to	6199	501 460 0977	to	0999	607 728 1276	to	1299	633 110 4303	to	4499
479 748 9680	to	9699	502 227 7645	to	7699	608 727 7100	to	7199	633 438 6429	to	6599
479 860 7000	to	7199	502 424 0200	to	0499	608 727 7273	to	7599	633 588 7173	to	7182
480 526 2000	to	2099	502 424 0600	to	0699	608 813 9950	to	9999	634 725 0700	to	0799
480 640 6330	to	6399	502 496 6923	to	6999	609 067 5325	to	5399	634 803 3239	to	3299
480 658 0568	to	0599	503 003 2700	to	2899	609 067 5488	to	5499	634 807 2474	to	2499

634 827 5900 to 5999	650 564 1900 to 1999	682 070 1029 to 1099	701 605 5913 to 5999
634 886 3428 to 3499	650 627 4212 to 4299	682 956 6280 to 6299	701 695 3982 to 3999
635 559 3449 to 3499	650 736 2043 to 2099	682 956 6490 to 6599	701 695 4148 to 4199
636 289 6214 to 6299	650 739 1540 to 1699	682 956 6700 to 6799	701 695 4227 to 4299
636 634 8007 to 8042	651 741 4415 to 4499	682 965 1178 to 1199	701 708 1741 to 1799
637 150 1200 to 1299	651 882 2800 to 2899	682 965 1201 to 1299	701 736 3966 to 3999
637 562 5828 to 5899	652 754 6317 to 6399	683 118 2389 to 2399	701 772 0870 to 0899
638 042 1647 to 1699	653 131 4945 to 4999	683 378 2000 to 2099	701 838 2800 to 2899
638 049 4984 to 4999	653 426 3300 to 3399	683 378 2117 to 2299	701 941 0600 to 0699
638 318 1115 to 1199	653 455 4874 to 4899	683 415 1200 to 1499	702 171 1603 to 1699
638 318 1453 to 1499	654 238 0000 to 0399	683 444 8159 to 8199	702 195 5109 to 5199
638 885 0000 to 0299	654 404 3065 to 3092	685 154 7780 to 7789	702 254 9300 to 9399
638 903 4362 to 4373	654 962 2900 to 3199	685 297 7645 to 7699	702 264 7569 to 7599
639 415 1929 to 1999	655 103 5081 to 5199	685 623 5264 to 5299	702 519 0513 to 0524
639 415 2019 to 2099	655 523 2600 to 2999	685 650 9487 to 9499	702 713 1800 to 1809
639 420 6200 to 6299	656 305 2448 to 2499	685 669 4200 to 4299	702 821 5730 to 5799
639 469 3517 to 3799	657 347 4438 to 4999	685 757 8452 to 8499	702 821 5805 to 5899
639 605 2143 to 2199	657 710 8100 to 8999	686 071 2694 to 2799	702 844 6975 to 6994
639 657 8600 to 8799	657 780 0985 to 0999	686 176 3333 to 3354	702 846 6331 to 6399
640 289 7500 to 7599	658 586 1400 to 1499	686 372 3200 to 3299	702 848 3900 to 3999
640 289 7700 to 7999	658 877 8000 to 8199	686 644 5879 to 5899	702 857 7302 to 7499
641 170 4420 to 4499	658 880 8000 to 8199	686 899 1371 to 1399	702 878 0114 to 0199
641 318 3133 to 3199	659 398 7300 to 7399	686 931 7636 to 7699	703 364 1707 to 1799
641 378 6500 to 6999	659 706 8113 to 8199	687 601 0973 to 0999	740 002 7710 to 7719
641 383 8739 to 8799	659 846 7837 to 7899	687 614 6774 to 6799	740 037 6730 to 6800
641 877 3187 to 3299	660 510 4100 to 4199	688 120 9000 to 9999	740 119 2275 to 2284
641 877 3310 to 3399	660 673 0400 to 0599	688 314 3107 to 3191	740 130 6688 to 6698
642 355 8094 to 8199	661 488 5000 to 5099	690 291 1361 to 1371	740 144 2780 to 2795
642 355 8308 to 8999	661 609 9100 to 9199	690 788 2877 to 2899	740 241 9049 to 9099
642 900 0018 to 0099	661 716 9420 to 9499	690 893 5344 to 5399	740 252 9265 to 9294
643 030 6254 to 6299	661 906 6522 to 6599	690 893 5512 to 5599	740 255 1718 to 1799
644 066 0882 to 0899	662 021 8332 to 8399	690 904 1300 to 1599	740 274 2602 to 2619
644 069 0600 to 0699	662 068 0700 to 0899	690 941 6000 to 6199	740 277 0366 to 0392
644 077 7506 to 7699	662 553 0774 to 0799	691 313 6383 to 6399	740 332 7658 to 7671
644 085 8157 to 8199	663 078 7034 to 7099	691 313 6600 to 6699	740 348 6641 to 6658
644 112 9839 to 9899	663 763 5300 to 5399	691 582 8003 to 8099	740 351 4790 to 4799
644 373 9083 to 9099	663 883 7039 to 7499	691 664 1800 to 1999	740 374 7416 to 7499
644 380 1460 to 1499	663 938 9200 to 9299	691 664 2400 to 2499	740 470 2420 to 2443
644 733 4715 to 4799	664 253 8000 to 8499	692 727 9362 to 9399	740 514 0300 to 0499
644 900 9712 to 9799	664 656 3055 to 3099	692 798 1800 to 1899	740 523 7432 to 7449
644 901 0109 to 1299	665 174 6400 to 6499	693 249 0779 to 0799	740 535 1555 to 1580
644 901 1325 to 1399	665 274 8208 to 8299	693 249 0877 to 1699	740 557 3570 to 3579
644 923 6800 to 7799	665 669 5400 to 5499	693 445 0566 to 0999	740 650 4104 to 4140
644 932 4655 to 4699	666 132 8226 to 8299	693 448 8500 to 8999	740 684 0620 to 0800
645 318 7240 to 7499	666 696 2209 to 2299	693 645 9583 to 9599	740 701 6105 to 6114
645 333 1766 to 1799	666 696 2309 to 2399	693 965 4200 to 4299	740 705 9790 to 9799
645 790 8632 to 8699	667 032 9300 to 9399	695 741 2906 to 2999	740 726 6400 to 6500
645 821 0657 to 0699	667 729 5529 to 5599	695 947 8518 to 8599	740 748 8319 to 8329
645 930 7948 to 7999	668 383 8400 to 8699	696 662 8247 to 8299	740 765 3306 to 3399
645 975 0737 to 0762	670 368 3400 to 3499	697 447 8285 to 8296	740 774 8434 to 8499
646 242 6200 to 6299	670 369 7336 to 7399	698 042 4816 to 4899	740 779 4259 to 4299
646 270 7639 to 7799	670 750 7169 to 7199	698 131 2138 to 2157	740 786 1885 to 1899
646 798 4000 to 4999	671 046 6200 to 6399	698 227 0000 to 0099	740 790 5989 to 5999
647 048 7035 to 7099	671 251 5448 to 5499	700 065 2570 to 2599	740 803 4870 to 4879
647 049 2900 to 2999	671 926 5600 to 5799	700 065 4800 to 4899	740 820 4854 to 7836
647 398 8300 to 8399	672 444 2000 to 2999	700 190 3350 to 3359	740 827 7578 to 7594
647 398 8481 to 8499	672 828 3410 to 3499	700 228 6048 to 6099	740 917 7490 to 7499
647 437 3000 to 4999	673 167 5776 to 5799	700 650 0452 to 0499	740 918 5531 to 5549
647 811 2188 to 2199	675 464 3700 to 3799	700 666 1323 to 1349	741 037 8528 to 8551
648 009 6057 to 6099	675 464 4000 to 4199	700 786 9106 to 9142	742 030 6135 to 6149
648 163 5300 to 5499	676 365 5958 to 5999	700 859 0744 to 0758	742 033 2663 to 2674
648 722 5283 to 5299	676 669 1024 to 1099	701 028 6780 to 6899	742 040 3300 to 3309
648 892 3164 to 3199	677 126 6734 to 6799	701 213 3900 to 3999	742 112 8155 to 8199
649 100 3989 to 3999	677 333 9979 to 9999	701 267 2000 to 3999	742 151 5000 to 5014
649 647 0370 to 0399	677 466 1088 to 1099	701 335 7312 to 7399	742 191 4640 to 4649
649 647 0522 to 0599	678 071 4500 to 4799	701 369 2005 to 2050	742 192 5210 to 5224
649 647 5237 to 5399	678 096 7531 to 7599	701 499 2260 to 2299	742 222 9200 to 9210
649 647 9100 to 9299	679 909 2578 to 2599	701 503 2247 to 2299	742 228 9660 to 9669
649 666 7800 to 8299	680 112 9565 to 9599	701 541 2271 to 2299	742 247 6980 to 6989
650 114 7707 to 7719	680 244 0903 to 0999	701 553 6557 to 6599	742 290 0936 to 0950
650 130 3400 to 3599	680 412 6046 to 6099	701 578 7460 to 7469	742 302 7600 to 7699
650 213 0406 to 0499	680 761 6800 to 6899	701 578 7475 to 7499	742 305 3711 to 3799
650 555 1749 to 1799	681 677 0540 to 0699	701 601 3457 to 3499	742 305 3800 to 3899

742 305 3900	to	3999	853 049 3646	to	3699	901 287 5143	to	5199	917 370 6300	to	6499
742 305 4000	to	4099	854 304 4089	to	4999	901 291 2789	to	2799	917 486 4900	to	4999
742 305 4100	to	4199	854 529 2200	to	2299	901 525 7122	to	7199	918 460 0602	to	0699
805 885 8411	to	8499	854 532 0000	to	2999	902 089 1253	to	1299	918 951 7231	to	7299
806 087 1100	to	1499	855 001 6204	to	6249	902 198 9769	to	9799	919 519 2786	to	2799
806 268 9275	to	9299	855 319 9364	to	9399	902 948 1269	to	1299	919 536 0770	to	0799
806 534 3400	to	3477	855 361 3390	to	3399	902 985 0833	to	0899	919 814 3095	to	3199
807 342 3283	to	3399	856 226 0490	to	0499	903 370 6934	to	6999	919 889 5110	to	5134
808 086 7100	to	7199	856 656 5800	to	5999	904 600 6523	to	6599	919 889 5137	to	5176
808 090 3440	to	3499	856 752 0200	to	0299	904 892 0378	to	0399	919 889 5178	to	5199
808 325 5161	to	5699	857 111 1352	to	1399	904 892 0648	to	1299	919 889 5030	to	5070
808 784 8000	to	8299	857 279 3450	to	3499	905 056 2216	to	2299	919 889 5090	to	5099
830 125 0672	to	0699	857 843 4000	to	4099	905 510 6647	to	6799	919 915 2774	to	2787
830 602 5800	to	5999	858 124 7644	to	7699	905 510 6900	to	7099	920 155 4662	to	4687
830 610 3700	to	3799	858 756 3111	to	3299	905 794 0000	to	0199	920 309 9039	to	9199
830 983 3500	to	3599	859 063 8200	to	8699	905 794 0288	to	0299	920 771 5321	to	5399
830 983 3635	to	3699	859 190 0600	to	0644	905 873 6900	to	6999	920 857 5500	to	5899
831 354 1387	to	1399	859 437 5538	to	5599	905 873 7100	to	7299	920 864 3480	to	3499
831 815 8240	to	8299	859 811 2888	to	2899	905 880 8900	to	8999	920 963 4567	to	4599
832 525 3810	to	3899	859 855 8873	to	8999	905 889 7100	to	7199	921 333 7400	to	7499
833 159 1884	to	1899	860 240 8520	to	8599	906 158 1508	to	1599	921 477 3762	to	3799
833 456 2567	to	2599	860 275 3900	to	3999	906 558 8812	to	8899	922 278 1048	to	1399
833 566 3015	to	3071	860 518 9629	to	9699	906 982 2214	to	2299	922 280 2019	to	2099
834 130 5200	to	5299	860 600 0021	to	0999	907 725 8500	to	8599	922 280 2233	to	2299
834 316 5444	to	5499	861 158 2350	to	2599	907 815 0216	to	0257	922 773 0459	to	0499
834 354 8747	to	8766	861 367 5400	to	5499	908 622 4225	to	4235	923 032 7000	to	7399
834 354 8824	to	8838	861 637 6010	to	6099	908 936 9254	to	9299	923 045 3630	to	3699
835 269 5700	to	5799	861 979 7292	to	7499	909 066 4494	to	7499	923 484 3600	to	3699
835 496 7303	to	7399	862 216 6100	to	6199	909 067 7400	to	7499	923 493 9403	to	9599
835 539 5200	to	5999	862 263 9213	to	9299	909 100 1787	to	1799	923 493 9681	to	9699
835 813 3015	to	3099	862 271 0800	to	0999	909 100 1900	to	2099	923 604 4424	to	4499
837 672 8967	to	8999	862 271 5000	to	5099	909 355 0422	to	0499	923 810 7800	to	8299
837 784 3282	to	3299	863 871 5138	to	5199	909 568 8900	to	9099	924 252 1200	to	1299
838 176 8377	to	8399	863 949 5300	to	5399	909 568 9300	to	9499	924 252 1400	to	1499
838 518 1257	to	1299	864 088 8200	to	8299	909 725 7307	to	7399	924 533 0711	to	0799
839 718 8257	to	8299	864 426 3972	to	3999	909 833 0947	to	0999	924 533 2343	to	2399
840 323 0600	to	0699	864 520 6117	to	6136	910 219 8631	to	8699	924 533 2428	to	2499
840 875 6235	to	6299	865 151 0526	to	0599	910 265 1100	to	1199	924 685 1957	to	1999
840 910 0900	to	0999	865 500 4034	to	4099	910 471 7273	to	7299	924 946 6300	to	6699
841 349 5000	to	5099	865 883 6082	to	6099	910 536 2505	to	2599	925 333 5900	to	6099
841 805 7747	to	7899	866 004 3000	to	3999	910 958 7499	to	7599	925 336 2300	to	2399
841 805 7944	to	8099	866 442 4100	to	4899	911 140 1000	to	2199	926 432 5907	to	5999
842 226 0685	to	0695	867 366 9108	to	9118	911 245 2545	to	2599	926 436 3600	to	3699
842 685 4600	to	4699	867 633 7403	to	7499	911 268 9077	to	9099	927 765 6257	to	6299
842 685 4742	to	4999	867 737 5623	to	5699	911 400 8948	to	8999	928 197 8100	to	8199
842 860 0300	to	0399	868 169 4529	to	4599	911 508 1620	to	1799	928 197 8283	to	8299
842 898 5582	to	5599	868 173 8400	to	8599	911 509 9310	to	9399	928 856 2059	to	2068
843 062 7100	to	7199	868 514 9000	to	9099	911 523 3000	to	3999	930 078 5800	to	5899
843 077 6288	to	6299	868 566 9200	to	9299	912 057 9922	to	9999	930 219 1722	to	1799
843 077 6378	to	6399	869 200 0000	to	9999	912 882 0563	to	0899	930 335 7810	to	7819
843 758 5769	to	5778	869 387 1150	to	1199	913 605 2218	to	2299	931 097 9259	to	9299
843 786 2554	to	2699	869 505 3500	to	3599	913 709 2429	to	2499	931 156 1502	to	1579
845 656 8165	to	8199	869 523 7033	to	7099	913 818 3501	to	3999	931 156 1600	to	1625
845 727 2100	to	2199	869 566 6150	to	6167	914 063 4300	to	4399	931 156 1671	to	1699
845 746 2618	to	2635	869 776 8785	to	8786	914 346 7621	to	7644	932 506 6400	to	6599
846 390 7531	to	7599	869 800 0000	to	999 9999	914 453 1366	to	1399	932 732 1796	to	1799
846 918 0572	to	0599	870 054 4814	to	4899	914 529 6185	to	6299	932 827 9026	to	9099
847 237 7690	to	7699	870 491 4812	to	4849	914 896 4658	to	4699	932 957 2300	to	2399
847 284 2481	to	2499	870 536 5820	to	5829	915 187 8774	to	8779	933 060 6160	to	6189
847 374 7055	to	7065	870 541 7167	to	7239	915 300 2783	to	2799	933 387 2541	to	2561
847 374 7055	to	7065	870 575 8155	to	8999	915 546 6822	to	6999	933 760 3609	to	4199
847 636 5304	to	5399	870 589 0485	to	0494	915 646 5183	to	5199	933 894 0928	to	0999
847 700 5447	to	5499	870 691 7060	to	7099	915 671 3963	to	3980	934 018 2729	to	2741
847 723 7500	to	7599	872 028 4850	to	4899	915 671 3982	to	3999	934 180 0300	to	0399
849 485 3427	to	3499	872 029 9306	to	9399	915 675 2217	to	2299	934 236 3954	to	3999
849 520 9850	to	9899	872 078 3709	to	3799	916 440 3377	to	3399	934 622 8717	to	8999
849 608 1357	to	1399	872 100 0445	to	0459	916 670 6352	to	6399	935 216 0312	to	0399
849 792 2600	to	2699	900 556 4178	to	4199	916 682 5300	to	5399	935 843 2202	to	2247
850 546 1862	to	1899	900 845 0044	to	0099	916 694 1414	to	1499	936 024 8889	to	8899
851 143 6826	to	6844	900 936 0217	to	0299	916 703 0802	to	0821	936 339 4455	to	4499
851 209 9880	to	9899	900 936 0435	to	0499	917 089 0709	to	0799			
851 928 9221	to	9299	901 058 5255	to	5280	917 089 0842	to	0899			
852 589 6560	to	6599	901 273 1082	to	1099	917 216 2928	to	2999			

Missing, Lost, or Stolen Canadian Money Order Forms

Do Not Cash — Upon Receipt, Notify Local Postal Inspectors

Provide this listing to all Postal Service™ employees responsible for accepting and cashing postal money orders. Destroy all interim notices when the numbers listed appear in the *Postal Bulletin*. The new money order serial

numbers consist of the first 9 digits. The tenth digit is a check digit only.

Do not cash outdated money orders **104 151 601 to 692 600 000**. Advise holders to send invalid money orders to Canada Post Corporation, Ottawa, Canada K1A 0B1. Check for altered dollar amounts by holding money orders to the light.

719 869 731	to 9 760	728 915 371	to 5 850	735 283 008	to 3 020	742 684 849	to 4 890
720 227 871	to 7 930	728 953 141	to 3 410	735 293 131	to 3 220	742 839 553	to 9 630
720 227 949	to 7 960	728 954 280	to 4 310	735 635 010	to 5 040	742 913 668	to 3 700
720 368 543	to 8 570	729 169 081	to 9 140	735 783 961	to 3 990	742 917 287	to 7 296
720 392 151	to 2 570	729 363 841	to 3 870	735 803 401	to 3 430	742 921 891	to 1 980
720 556 491	to 6 640	729 682 891	to 3 190	736 005 420	to 5 440	742 983 631	to 3 810
720 558 621	to 8 650	729 838 940	to 9 070	736 366 021	to 6 110	743 020 021	to 0 170
720 575 361	to 5 570	729 839 101	to 9 130	736 624 456	to 4 500	743 206 491	to 6 500
720 590 152	to 0 179	730 077 683	to 7 840	736 670 851	to 1 060	743 235 992	to 6 050
721 638 331	to 9 170	730 109 847	to 9 880	736 767 061	to 7 090	743 940 631	to 0 900
721 815 391	to 5 420	730 373 761	to 3 850	736 767 093	to 7 120	743 978 011	to 8 070
721 969 713	to 9 740	730 501 951	to 2 130	736 982 191	to 2 370	744 234 751	to 4 780
722 072 137	to 2 160	730 519 379	to 9 470	736 982 551	to 2 730	744 499 591	to 9 680
722 378 265	to 8 280	730 569 278	to 9 360	737 110 141	to 0 170	744 626 901	to 6 910
722 413 990	to 4 004	730 711 711	to 1 740	737 185 501	to 5 710	745 388 794	to 8 910
722 764 948	to 4 980	730 722 991	to 3 230	737 317 321	to 7 350	746 446 806	to 6 820
722 825 840	to 5 889	730 845 970	to 5 990	737 517 781	to 7 840	746 818 351	to 8 410
723 153 841	to 3 850	730 888 291	to 8 320	737 628 181	to 8 210	747 245 266	to 5 280
723 237 616	to 7 630	730 927 591	to 7 680	737 634 258	to 4 270	747 364 813	to 4 830
723 331 081	to 1 110	731 307 914	to 7 930	738 361 971	to 1 980	747 501 434	to 1 450
723 496 443	to 6 470	731 402 431	to 2 460	738 447 601	to 7 660	747 739 891	to 0 070
723 967 291	to 7 320	731 407 232	to 7 320	738 648 355	to 8 450	748 148 649	to 8 760
724 655 196	to 5 340	731 588 301	to 8 340	738 849 811	to 9 900	748 259 960	to 9 970
724 711 441	to 1 500	731 767 273	to 7 320	738 892 270	to 2 290	748 565 162	to 5 280
724 711 538	to 1 560	731 781 061	to 1 120	738 997 259	to 7 380	748 874 988	to 5 030
724 793 221	to 3 250	731 837 821	to 7 910	739 161 451	to 1 540	749 137 381	to 7 410
724 908 109	to 8 120	731 841 377	to 1 450	739 219 381	to 9 440	749 190 192	to 0 210
724 937 461	to 7 670	732 018 481	to 8 600	739 740 151	to 0 180	749 685 421	to 5 450
725 163 118	to 3 151	732 067 972	to 8 370	739 793 491	to 3 520	749 846 791	to 6 850
725 202 735	to 2 750	732 188 649	to 8 670	739 793 527	to 3 550	749 993 131	to 3 580
725 398 591	to 8 800	732 193 460	to 3 470	739 942 621	to 2 650	750 071 587	to 1 610
725 464 591	to 4 920	732 201 241	to 1 390	739 999 231	to 9 320	750 408 167	to 8 183
725 475 321	to 5 330	732 220 431	to 0 440	740 011 517	to 1 530	750 438 421	to 8 501
725 711 057	to 1 070	732 355 201	to 5 380	740 030 701	to 0 970	750 743 911	to 4 030
725 738 581	to 8 730	732 472 320	to 2 560	740 261 740	to 1 820	750 779 118	to 9 400
725 981 311	to 1 430	732 541 605	to 1 620	740 265 811	to 6 290	750 910 981	to 1 010
725 987 835	to 7 880	732 572 221	to 2 490	740 299 111	to 9 170	750 960 841	to 0 900
726 060 811	to 0 900	732 586 479	to 6 710	740 299 231	to 9 260	751 296 211	to 6 240
726 391 970	to 2 520	732 994 037	to 4 080	740 329 266	to 9 320	751 539 121	to 9 180
726 484 771	to 4 800	733 163 449	to 3 460	740 889 081	to 9 090	751 541 311	to 1 790
726 493 351	to 5 300	733 297 171	to 7 290	741 010 421	to 0 530	751 757 641	to 7 700
726 504 031	to 4 063	733 446 631	to 7 110	741 113 041	to 3 370	751 936 951	to 7 010
726 504 070	to 4 090	733 474 665	to 4 770	741 373 891	to 4 340	751 951 861	to 1 890
726 504 331	to 4 390	733 704 482	to 4 570	741 452 369	to 2 490	751 999 021	to 9 110
726 563 701	to 4 060	733 751 041	to 1 130	741 492 991	to 3 140	752 139 516	to 9 570
726 599 371	to 9 460	734 009 101	to 9 130	741 553 460	to 3 470	752 182 892	to 2 950
726 626 356	to 6 370	734 290 759	to 0 770	741 764 431	to 4 520	752 206 861	to 7 100
727 182 271	to 2 510	734 389 273	to 9 290	741 764 431	to 4 520	752 295 241	to 5 600
727 416 181	to 6 240	734 440 031	to 0 111	742 178 834	to 8 880	752 731 351	to 1 410
727 481 431	to 1 460	734 797 201	to 7 320	742 325 500	to 5 520	752 767 441	to 7 470
727 749 241	to 9 780	734 939 611	to 9 640	742 325 668	to 5 700	753 008 941	to 9 030
728 382 331	to 2 480	734 950 111	to 0 170	742 408 771	to 8 830	753 194 311	to 4 370
728 702 338	to 2 400	735 120 331	to 0 840	742 512 120	to 2 150	753 620 378	to 0 400

754 013 917	to	3 940	763 522 141	to	2 470	773 575 891	to	5 950	802 967 821	to	7 940
754 161 061	to	1 120	763 717 694	to	7 800	773 852 971	to	3 030	803 217 601	to	7 780
754 358 445	to	8 610	763 826 461	to	6 520	775 373 449	to	3 460	803 729 731	to	9 850
754 410 451	to	0 660	763 900 460	to	0 471	789 257 191	to	7 250	803 747 402	to	7 520
754 438 393	to	8 410	763 900 479	to	0 530	790 448 020	to	8 460	804 138 181	to	8 420
754 493 109	to	3 130	763 917 271	to	7 750	790 597 485	to	7 530	804 428 224	to	8 250
754 664 182	to	4 220	764 125 801	to	5 860	790 911 883	to	1 900	804 682 411	to	2 710
754 816 377	to	6 470	764 284 525	to	4 560	791 057 441	to	7 550	805 272 525	to	2 540
755 487 421	to	7 600	764 526 241	to	6 330	791 239 081	to	9 290	805 523 445	to	3 460
755 592 901	to	3 140	764 601 421	to	1 600	791 374 483	to	4 500	805 745 704	to	5 730
755 790 020	to	0 030	764 650 231	to	0 470	791 387 971	to	8 030	806 452 907	to	2 980
755 791 730	to	1 800	764 984 371	to	4 850	791 447 521	to	7 850	806 744 781	to	4 850
755 926 951	to	7 070	765 003 667	to	3 680	791 451 151	to	1 240	806 982 181	to	2 300
755 934 332	to	4 510	765 042 517	to	2 540	791 500 009	to	0 470	807 764 791	to	4 910
755 957 701	to	8 000	765 194 728	to	4 970	791 771 431	to	1 490	808 089 931	to	9 960
755 962 981	to	3 280	765 387 365	to	7 450	792 004 293	to	4 320	808 656 423	to	6 450
756 035 371	to	5 490	765 541 801	to	2 100	792 018 379	to	8 420	808 753 771	to	3 800
756 301 257	to	1 290	765 638 461	to	8 970	792 070 621	to	0 740	809 189 001	to	9 010
756 371 565	to	1 580	765 647 101	to	7 190	792 145 211	to	5 230	809 886 879	to	6 930
756 876 031	to	6 120	765 813 781	to	4 029	792 391 381	to	1 620	809 890 489	to	0 500
756 876 151	to	6 240	765 879 314	to	9 390	792 452 779	to	2 790	810 323 734	to	3 760
756 970 129	to	0 140	765 954 001	to	4 030	792 772 728	to	2 770	810 367 116	to	7 140
757 059 613	to	9 630	766 120 286	to	0 320	792 903 511	to	3 990	810 526 351	to	6 500
757 078 540	to	8 560	766 125 716	to	5 750	793 282 518	to	2 533	810 806 911	to	6 940
757 086 209	to	6 240	766 158 824	to	8 840	794 041 831	to	2 040	810 807 211	to	7 240
757 240 591	to	0 650	766 388 433	to	8 460	794 397 709	to	7 780	811 423 021	to	3 110
757 277 371	to	7 700	766 509 421	to	9 660	794 581 741	to	2 040	811 517 221	to	7 239
757 291 591	to	2 730	766 572 901	to	3 020	794 592 122	to	2 150	811 721 101	to	1 130
757 964 251	to	4 280	766 748 500	to	8 521	795 032 251	to	2 340	812 025 721	to	5 900
758 067 001	to	7 090	767 024 341	to	4 370	795 796 291	to	6 350	812 093 073	to	3 130
758 105 221	to	5 250	767 326 471	to	6 590	796 070 139	to	0 160	812 100 821	to	0 840
758 324 941	to	5 000	767 332 561	to	2 950	796 143 151	to	3 630	812 465 251	to	5 610
758 593 628	to	3 650	768 009 841	to	9 960	796 159 725	to	9 740	812 918 341	to	8 670
758 709 038	to	9 060	768 011 489	to	1 520	796 169 306	to	9 340	812 918 701	to	8 760
758 744 101	to	4 160	768 177 980	to	7 990	796 373 406	to	3 430	813 050 491	to	0 520
758 850 883	to	0 900	768 391 081	to	1 170	796 602 961	to	3 050	813 073 171	to	3 200
758 860 951	to	1 550	768 661 569	to	1 650	796 708 441	to	8 500	813 398 476	to	8 550
759 152 851	to	2 880	769 000 051	to	0 080	796 886 281	to	6 430	813 713 971	to	4 000
759 740 941	to	1 090	769 050 841	to	0 900	796 901 701	to	2 000	813 858 121	to	8 150
760 004 596	to	4 610	769 159 081	to	9 178	796 975 466	to	5 590	814 789 330	to	9 349
760 118 191	to	8 250	769 737 496	to	7 510	797 272 917	to	2 950	814 984 656	to	4 680
760 155 001	to	5 090	769 778 491	to	8 730	797 519 441	to	9 460	815 016 020	to	6 030
760 378 002	to	8 020	769 827 331	to	7 450	797 519 731	to	0 240	815 199 410	to	9 420
760 692 722	to	2 749	770 216 071	to	6 100	797 535 181	to	5 330	815 240 491	to	0 520
761 055 460	to	5 480	770 723 281	to	3 400	797 646 151	to	6 180	815 755 591	to	5 620
761 169 781	to	9 810	770 790 451	to	0 480	798 040 053	to	0 080	815 755 622	to	5 650
761 504 941	to	5 120	770 915 150	to	5 490	798 055 813	to	5 830	815 806 381	to	6 680
761 516 836	to	6 910	771 455 551	to	5 610	798 055 891	to	5 950	816 126 834	to	6 870
761 613 588	to	3 600	771 609 661	to	9 690	798 326 371	to	6 520	816 156 721	to	6 780
761 688 631	to	8 690	771 932 551	to	2 580	798 339 167	to	9 210	816 580 903	to	0 920
761 805 199	to	5 240	772 057 224	to	7 440	798 562 411	to	2 440	816 945 571	to	5 600
761 826 106	to	6 120	772 162 660	to	3 070	798 632 461	to	2 490	817 253 011	to	3 280
761 881 171	to	1 560	772 718 615	to	8 640	798 807 151	to	7 510	817 763 881	to	4 060
761 975 641	to	5 670	772 940 140	to	0 160	798 944 761	to	5 030	818 330 562	to	0 610
761 975 886	to	5 895	772 970 886	to	0 940	799 118 616	to	8 640	818 459 641	to	9 670
762 304 144	to	4 170	773 009 419	to	9 430	799 133 191	to	3 220	818 926 273	to	6 320
762 324 931	to	4 960	773 112 031	to	2 060	799 177 626	to	7 650	818 950 351	to	0 380
762 439 261	to	9 290	773 125 387	to	5 410	799 854 751	to	5 200	818 962 492	to	2 530
762 524 158	to	4 220	773 179 320	to	9 410	800 044 320	to	4 410	819 032 341	to	2 730
762 584 872	to	4 970	773 202 989	to	3 140	800 211 901	to	2 440	819 127 054	to	7 080
762 593 431	to	3 460	773 208 991	to	9 290	800 427 530	to	7 540	819 278 540	to	8 670
763 155 160	to	5 180	773 231 311	to	1 340	800 872 741	to	2 830	819 544 681	to	4 740
763 178 631	to	8 660	773 348 739	to	8 940	801 349 801	to	9 830	819 928 441	to	8 650
763 506 001	to	6 060	773 348 739	to	8 940	801 676 681	to	7 100	820 034 406	to	4 430

820 070 761	to 1 540	823 284 931	to 4 990	826 720 201	to 0 230	828 732 331	to 2 390
820 191 342	to 1 360	823 293 031	to 3 210	827 005 671	to 5 830	828 807 781	to 7 840
820 274 856	to 4 880	823 556 011	to 6 100	827 287 861	to 7 950	828 830 952	to 0 963
820 600 171	to 0 230	824 078 341	to 8 370	827 291 502	to 1 520	828 939 781	to 0 050
821 172 241	to 2 360	824 156 325	to 6 340	827 575 381	to 5 470	829 002 721	to 2 870
821 229 661	to 9 720	824 511 252	to 1 270	827 609 085	to 9 100	829 005 301	to 5 540
821 229 743	to 9 780	824 588 281	to 8 370	827 619 811	to 9 840	829 080 241	to 0 330
821 903 731	to 3 910	825 140 397	to 0 460	827 883 511	to 3 600	829 160 986	to 1 000
821 927 841	to 7 850	825 409 651	to 9 680	828 160 441	to 0 530	829 176 841	to 6 930
822 505 801	to 5 830	825 472 171	to 2 200	828 376 201	to 6 260	829 471 561	to 1 590
822 703 442	to 3 470	826 042 898	to 2 920	828 441 602	to 1 630	829 561 065	to 1 080
822 900 991	to 1 020	826 226 644	to 6 670	828 539 316	to 9 340	829 566 481	to 6 510
822 925 951	to 6 100	826 582 951	to 3 430	828 539 341	to 9 370	829 569 931	to 9 960

— Criminal Investigations Group, U.S. Postal Inspection Service, 10-20-22

Verifying U.S. Postal Service Money Orders

Follow these steps to cash a Postal Service™ money order:

1. Check that the amount does not exceed the legal limit: \$1,000 for domestic, and \$700 for international Postal Service money orders.
2. Check that the proper security features are present:
 - When held to the light, a watermark of Benjamin Franklin is repeated from top to bottom on the left side.
 - When held to the light, a dark line (security thread) runs from top to bottom with the word “USPS” repeated.
 - When there is discoloration around the dollar amounts, this might indicate the amounts were changed.

These appear in Postal Service Notice 299, *U.S. Postal Money Order Reference Card*, or online at usps.com/shop/money-orders.htm.

3. If the money order seems suspicious, call the U.S. Postal Service Money Order Verification System at 866-459-7822.

Provide this information to local banks and retailers, as they also receive Postal Service money orders for cashing.

— Delivery and Retail
Customer Service Operations, 10-20-22

Counterfeit Canadian Money Order Forms

Do Not Cash

To be posted and used by retail window employees. As directed, destroy previous notices. Destroy all interim notices when the numbers listed appear in the *Postal Bulletin*.

671,819,086	683,594,542	687,262,503
676,612,640	684,683,610	687,262,525
677,891,039	686,619,878	687,262,526
678,282,493	686,619,886	687,287,578
678,916,031	686,619,887	687,287,581
679,552,215	686,794,382	687,287,582
679,694,334	686,794,426	694,063,898
679,751,983	686,794,427	694,063,899
679,800,207	686,794,431	694,063,980
681,130,536	687,262,502	701,321,725
681,844,376		

— Criminal Investigations Group,
U.S. Postal Inspection Service, 10-20-22

Toll-Free Number Available to Verify Canadian Money Orders

The Canada Post Corporation has a toll-free number that cashing agents can call to verify the validity of Canadian Postal Money Orders. The number is 800-563-0444.

This toll-free number is printed on the back of the Canadian Postal Money Orders.

— Criminal Investigations Group,
U.S. Postal Inspection Service, 10-20-22

Other Information

Overseas Military/Diplomatic Mail

Mail addressed to military and diplomatic post offices overseas is subject to certain conditions or restrictions of mailing regarding content, preparation, and handling. The APO/FPO/DPO table outlines these conditions by APO/FPO/DPO ZIP Codes™ through the use of footnoted mailing restrictions codes (see the [Restrictions](#) page following the table).

Acceptance clerks must use the table with the Retail System Software terminal to determine which APO/FPO/DPO ZIP Codes are active and which conditions of mailing apply.

The entries under “Changes” appear in bold in the following APO/FPO/DPO table:

Changes

APO/FPO/DPO	Action	Effective Date	See Restrictions
APO AE 09832	Open	10/04/2022	A-B-C-C1-C2-E2-E3-F1-F3-H-H1-J-M-N-R-R1-S-V-Z1
FPO AP 96534	Add C, C2, R, R1, V	09/26/2022	A-B-C-C2-F-F1-F2-F3-R-R1-S-U-V-Z1

We have eliminated “Not Active” entries from the table below to save space and paper.

APO/ FPO/ DPO	See Restrictions	APO/ FPO/ DPO	See Restrictions	APO/ FPO/ DPO	See Restrictions	APO/ FPO/ DPO	See Restrictions
09002	A-B-C2-F-F3-H-N-Q-R-S-V-Z-Z1	09046	B-C-C2-D-E-F-F3-H-M-R-S-U	09128	B-C-C2-D-E-F-F3-H-M-R-S-U	09179	A-B-C-C1-C2-F-F1-F3-J-L-M-N-R-R1-S-T-V-X-Z1
09003	B-C-C2-D-E-F-F3-H-M-P-R-S-U	09049	B-C-C2-D-E-F-F3-H-M-R-S-U	09131	B-C-C2-D-E-F-F3-H-M-R-S-U	09180	B-C-C2-D-E-F-F3-H-M-R-S-U
09004	B-C-C2-D-E-F-F3-H-M-R-S-U	09053	B-C-C2-D-E-F-F3-H-M-R-S-U	09135	A-B-C2-F-F3-H-N-R-S-U-V-Z1	09186	B-C-C2-D-E-F-F3-H-M-P-R-S-U
09005	B-C-C2-D-E-F-F3-H-M-P-R-S	09060	B-C-C2-D-E-F-F3-H-M-N-R-S-U-Z1	09136	B-C-C2-D-E-F-F3-H-M-P-R-S-U	09203	A-B-C-C1-C2-F-F1-F3-I3-J-L-M-N-R-R1-T-V-Z-Z1
09006	B-C-C2-D-E-F-F3-H-M-R-S-U	09067	B-C-C2-D-E-F-F3-H-M-R-S-U	09138	B-C-C2-D-F-F3-H-M-R-S-U	09204	B-C-F3-M-N-R-S-V-Z1
09008	A-B-C2-F-F3-H-N-Q-R-S-V-Z-Z1	09068	B-C-C2-D-E-F-F3-H-R-S-U-Z1	09140	B-C-C2-D-E-F-F3-H-M-R-S-U	09211	B-C-C2-D-E-F-F3-H-M-P-R-S-U
09009	B-C-C2-D-E-F-F3-H-M-R-S-U-Z1	09069	A-B-C-C2-D-E-F-F3-H-N-R-S-U-V	09142	B-C-C2-D-E-F-F3-H-M-R-S-U	09213	B-C2-F-F1-F3-H-J-L-M-N-R-R1-T-U-V-Z1
09010	B-C-C2-D-E-F-F3-H-M-R-S-U2	09079	B-C-C2-D-E-F-F3-H-M-R-S-U	09154	B-C-C2-D-E-F-F3-H-M-R-S-U	09214	B-C-C2-D-E-F-F3-H-M-R-S-U-Z1
09011	B-C-C2-D-E-F-F3-H-M-R-S	09094	B-C-C2-D-F3-H-M-P-R-S-Z1	09160	B-C-C2-D-F-F1-F3-H-J-L-M-N-R-R1-T-U-V-Z1	09216	B,C,F1,F3,M,N,R,S,V,Z1
09012	B-C-C2-D-E-F-F3-H-M-R-S-U-Z1	09095	B-C-C2-D-E-F-F3-H-M-R-S-U	09170	A-B-C2-F-F1-F3-J-L-M-N-R-R1-S-T-V-X-Z1	09227	B-C-C2-D-E-F-F3-H-M-R-S-U
09013	B-C-C2-D-E-F-F1-F3-H-M-R-S-U-Z1	09096	B-C-C2-D-E-F-F3-H-M-R-S-U	09171	A-B-C1-C2-E3-F-F1-F3-J-L-M-N-R-R1-S-T-V-X-Z1	09240	A-B-C1-C2-F-F3-H-N-R-S-V
09014	B-C-C2-D-E-F-F3-H-M-P-R-S-U	09101	A-B-C2-F-F3-H-N-Q-R-S-V-Z-Z1	09172	B-C-C2-D-E-F-F3-H-M-R-S-U	09241	A-B-C-C2-F3-N-R-S-U-Z1
09015	A-B-C-C1-C2-F-F1-F3-J-L-M-N-R-R1-S-V-Z1	09103	A-B-C-C2-F3-H-N-Q-R-S-V-Z-Z1	09173	B-C-C2-D-E-F-F3-H-M-R-S-U	09242	A-B-C1-C2-F-F3-H-N-R-S-V
09016	B-C-C2-D-E-F-F3-H-M-R-S-U	09104	B-C-C2-D-F3-H-M-R-S-U-Z1	09174	B-C-C2-F-F1-F3-I3-L-N-R-R1-S-T-V-X-Z-Z1	09250	B-C-C2-D-E-F-F3-H-M-R-S-U
09017	A-B-C2-F-F3-H-N-Q-R-S-V-Z-Z1	09107	B-C-C2-D-E-F-F3-H-M-R-S-U	09175	A-B-C1-C2-E2-F-F1-F3-H1-J-L-M-N-R-R1-S-T-V-W-X-Z1	09261	B-C-C2-D-E-F-F3-H-M-N-R-S-U-V-Z1
09018	A-B-C-C2-F-F3-H-N-Q-R-S-V-Z-Z1	09112	B-C-C2-D-E-F-F3-H-M-R-S-U	09176	A-B-C2-F-F1-F3-J-L-M-N-R-R1-S-T-V-X-Z1	09263	B-C-C2-D-E-F-F3-H-M-R-S-U
09020	B-C-C2-D-E-F-F3-H-M-R-S-U	09114	B-C-C2-D-E-F-F3-H-M-R-S-U	09177	B-C-C2-D-E-F-F3-H-M-R-S-U	09264	B-C-C2-D-E-F-F3-H-M-R-S-U
09021	B-C-C2-D-E-F-F3-H-M-R-S-U-Z1	09115	A-B-C2-F-F3-H-N-R-S-V-Z1	09178	B-C1-C2-E2-F1-F3-I3-L-M-N-R-S-T-V-X-Z-Z1	09265	B-C-D-F-F1-H-J-L-M-N-R-S-T-U-V-Z1
09034	B-C-C2-D-E-F-F3-H-M-R-S-U	09116	A-B-C2-F-F3-H-N-R-S-V-Z1			09266	A-B-C2-F3-S-U-R-V-Z1
09044	B-C-C2-D-F-F3-H-R-S-U	09123	B-C-C2-D-E-F-F3-H-M-R-S-U-Z1			09276	A-B-F-F3-I3-L-M-N-R-S-T-V-X-Z-Z1
		09126	B-C-C2-F3-H-M-P-R-S-Z1				

APO/ FPO/ DPO	See Restrictions	APO/ FPO/ DPO	See Restrictions	APO/ FPO/ DPO	See Restrictions	APO/ FPO/ DPO	See Restrictions
09277	A-B-E-E1-E2-F1-F3-I3-L-N-R-S-T-V-X-Z-Z1	09312	A-B-C1-C2-E2-F-F1-F3-H1-I3-L-M-N-R-R1-S-T-U-U4-V-Z-Z1	09489	A-B-C-C1-C2-E2-F1-F3-L-M-N-R-R1-S-T-V-W-X-Z1	09564	B-C-C2-F-F1-F3-R-R1-S-V
09278	A-B-F-F3-I3-L-M-N-R-S-T-V-X-Z-Z1	09315	A-B-C1-E2-F-F3-N-R-R1-S-V-Z1	09490	A-B-C1-C2-E2-F-F1-F3-H1-J-L-M-N-R-R1-S-T-V-X-Z1	09565	B-C-C2-F-F1-F3-R-R1-S-V
09279	A-B-E-E1-F-F3-I3-L-M-N-R-S-T-V-X-Z-Z1	09316	A-B-C1-E2-F-F1-F3-H1-I3-M-N-R-R1-S-T-V-Z-Z1	09491	A-B-C1-C2-E2-F1-F3-H1-J-L-M-N-R-R1-S-T-V-Z1	09566	B-C-C2-E2-E3-F-F1-F3-R-R1-S-V
09280	A-B-B2-C-C1-C2-E-E2-F1-F3-H-I3-L-M-N-R-S-T-V-W-X-Z-Z1	09321	A-B-C1-C2-E2-F-F3-H1-M-N-R-R1-S-V-Z1	09494	B-C-C1-C2-F3-M-R-S-U-Z1	09567	B-C-C2-E2-E3-F-F1-F3-R-R1-S-V
09281	A-B-C1-C2-E2-E3-F-F1-F3-H-H1-J-L-M-N-R-R1-S-T-V-X-Z1	09330	A-B-C1-C2-D-E-E2-F-F1-F3-H-H1-M-R-R1-S-V-Z1	09498	B-C1-C2-F-F1-F3-J-L-N-R-R1-T-V-Z1	09568	B-C-C2-F-F1-F3-R-R1-S-V
09282	A-B-C1-C2-E2-E3-F-F1-F3-H-H1-J-L-M-N-R-R1-S-T-V-X-Z1	09333	A-B-C-C1-C2-E2-F-F1-F3-H1-I3-M-N-R-R1-S-V-V1-Z-Z1	09501	B-V	09569	B-C-C2-E2-E3-F-F1-F3-R-R1-S-V-Z1
09283	A-B-E-E1-F-F3-L-M-N-R-S-T-V-X-Z1	09343	A-B-C1-C2-F-F3-M-N-R-R1-S-V-Z1	09502	B-V	09570	B-C-C2-F-F1-F3-R-R1-S-V
09284	A-B-C-C2-F-F3-I3-L-M-N-R-S-T-V-X-Z-Z1	09348	A-B-C1-E2-F-F1-F3-H1-I3-M-N-R-R1-S-T-V-Z-Z1	09503	B-F-F1-R-R1-V	09573	B-C-C2-E2-E3-F-F1-F3-R-R1-S-V-Z1
09285	A-B-C-E-E-1-F1-F3-H-I3-L-M-N-R-S-T-V-X-Z-Z1	09357	A-B-C1-E2-F-F3-H1-M-R-V-Z1	09504	B-V	09574	B-F-F1-R-R1-V
09287	B-C2-E1-F1-F3-J-L-N-R-S-T-V-X-Z1	09365	A-B-C-C1-E2-F-F3-H1-M-N-R-V-Z1	09505	B-V	09575	B-C-C2-F-F1-F3-R-R1-S-V
09289	B-E2-F1-F3-H1-J-L-M-N-R-R1-S-T-U2-V-X-Z1	09366	A-B-C-C1-E2-F-F1-F3-H-H1-M-R-R1-S-V-Z1	09506	B-V	09576	B-C-C2-F-F1-F3-R-R1-S-V
09290	A-B-F1-F3-J-L-M-N-R-S-T-U2-V-X-Z1	09401	B-C-C1-C2-F3-M-R-S-U-Z1	09507	B-V	09577	B-C-C2-F-F1-F3-R-R1-S-V
09291	B-C-C1-C2-E2-F1-F3-H1-L-N-R-R1-S-T-V-X-Z1	09403	B-C-C1-C2-F3-M-R-S-U-Z1	09508	B-C-C2-F-F3-R-R1-S-V	09578	B-C-C2-F-F1-F3-R-R1-S-V
09292	A-B-C-C2-E-E2-E3-F1-F3-H-H1-J-L-M-N-R-R1-S-T-V-X-Z1	09410	C-C2-F-F1-F3-N-R-S-U2	09509	B-C-C2-F-F3-R-R1-S-V	09579	B-C-C2-F-F1-F3-R-R1-S-V
09293	A-B-C-C1-C2-E-E2-F1-F3-I3-L-M-N-R-S-T-V-X-Z-Z1	09421	B-C-C1-C2-F3-M-R-S-U-Z1	09510	B-C-C2-F-F3-R-R1-S-V	09581	B-C-C2-F-F1-F3-R-R1-S-V
09294	B-C-C1-C2-E2-F1-F3-H1-L-N-R-R1-S-T-V-X-Z1	09447	B-C-C1-C2-F3-M-R-S-U-V-Z1	09511	B-C-C2-F-F3-R-R1-S-V	09582	B-C-C2-F-F1-F3-R-R1-S-V
09301	A-B-C1-C2-E2-F-F1-F3-H1-I3-L-M-N-R-R1-S-T-U4-V-Z-Z1	09454	B-C-C1-C2-F3-M-R-S-U-V-Z1	09512	B-C-C2-F-F1-F3-R-R1-S-V	09583	B-C-C2-F-F1-F3-R-R1-S-V
09304	A-C1-C2-F-F1-F3-H-M-N-R-S-V-Z-Z1	09456	B-C-C1-C2-F3-M-N-R-S-U-V-Z1	09513	B-C-C2-F-F1-F3-R-R1-S-V	09586	B-C-C2-F-F1-F3-R-R1-S-V
09305	A-B-C1-E2-F-F1-F3-H1-I3-M-N-R-R1-S-T-V-Z-Z1	09459	B-C-C1-C2-F3-M-R-S-U-Z1	09514	B-C-C2-F-F1-F3-R-R1-V	09587	B-C-C2-F-F1-F3-R-R1-S-V
09306	A-B-C1-E2-F-F1-F3-H1-R-R1-S-U2-V-Z1	09461	B-C-C1-C2-F3-M-P-R-S-U-Z1	09516	B-C-C2-F-V-F3-R-R1-S-F1	09588	B-C-C2-F-F1-F3-R-R1-S-V
09307	B-C-C2-F-F3-N-R-R1-S-Z1	09463	B-C-C1-C2-F3-M-R-S-U-Z1	09517	B-C-C2-F-F1-F3-R-R1-S-V	09589	B-F-F1-F3-R-S-V
09309	A-B-C-C1-C2-E2-F-F1-F3-H1-M-N-R-R1-S-V-Z1	09464	B-C-C1-C2-F3-R-S-U-Z1	09520	B-F-F1-F3-R-R1-S-V	09590	B-C-C2-F-F1-F3-R-R1-S-V
09310	A-B-C1-C2-E2-F-F1-F3-H1-I3-L-M-N-R-R1-S-T-U4-V-Z-Z1	09467	B-E-E1-F-F3-J-L-M-N-R-S-T-V-X-Z1	09522	B-C-C2-F-F1-F3-R-R1-S-V	09591	B-C-C2-F-F1-F3-R-R1-S-V
09311	A-B-C1-C2-E2-F-F1-F3-H1-I3-L-M-N-R-R1-S-T-U4-V-Z-Z1	09468	B-C-C1-C2-F3-M-R-S-U-Z1	09523	B-C-C2-F-F1-F3-R-R1-S-V	09592	B-C-C2-F-F1-F3-R-R1-S-V
		09469	B-C-C1-C2-F3-R-S-U-Z1	09524	B-C-C2-F-F1-F3-R-R1-S-V	09593	B-F-F1-F3-R-S-V
		09470	B-C-C1-C2-F3-M-R-S-U-Z1	09532	B-C-C2-F-F1-F3-R-R1-S-V	09594	B-C-C1-C2-F-F1-F3-R-R1-S-V
		09487	A-B-C-C1-C2-E2-F1-F3-I3-L-M-N-R-R1-S-T-V-W-X-Z-Z1	09533	B-V	09595	B-C-C2-F-F1-F3-I3-J-R-R1-S-V-V1-Z1
		09488	A-B-C-C1-C2-E2-F3-J-L-M-N-S-T-V-W-X-Z1	09534	B-F-F1-F3-R-R1-S-V	09596	B-F-F1-R-R1-V
				09541	A-B-C-F-F3-M-N-S-V-Z1	09599	B-F-F1-R-R1-V
				09542	A-B-C-F-F3-M-N-S-V-Z1	09600	B-C-C2-F-F1-F3-R-S-U-Z1
				09543	A-B-C-F-F3-M-N-S-V-Z1	09602	B-C-C2-F-F1-F3-N-R-S-U-V
				09544	A-B-C-F-F3-M-N-S-V-Z1	09603	B-C-C2-F-F1-F3-R-S-U-V-Z1
				09545	A-B-C-F-F3-M-N-S-V-Z1	09604	B-C-C2-F-F1-F3-P-R-S-U-V-Z1
				09550	B-C-C2-F-F1-F3-R-R1-S-V	09605	B-C-C2-D-F-F3-H-M-R-S-U-V
				09554	B-C-C2-F-F1-F3-R-R1-S-V		
				09556	B-F-F1-R-R1-V		

APO/ FPO/ DPO	See Restrictions	APO/ FPO/ DPO	See Restrictions	APO/ FPO/ DPO	See Restrictions	APO/ FPO/ DPO	See Restrictions
09606	B-C-C2-D-F-F3-H-M-R-S-U-V	09710	B-C-C1-F-F1-J-L-M-N-R-R1-T-U-V-Z1	09745	A-B-C2-F-F1-F3-M-N-R-R1-S-V-Z1	09814	B-C2-E2-E3-F-F1-F3-I3-J-L-N-R-R1-T-V-Z-Z1
09608	B-C-F-F3-N-R-S-U-V-Z1	09711	A-B-C-C2-E2-F-F1-F3-M-N-R-S-T-V-X	09748	A-B-C1-C2-F-F1-F3-J-L-M-N-R-R1-T-V-Z1	09815	A-B-C-C2-E-E2-E3-F1-F3-H-H1-J-M-N-R-R1-S-U-V-Z1
09609	B-C-C2-F-F3-N-R-S-U-V-Z1	09712	A-B-C2-F-F3-H-R-S-U-V-Z1	09749	A-B-C2-F-F3-H-N-R-S-U-V-Z1	09816	A-B-C1-C2-E2-E3-F1-F3-J-L-N-R-R1-T-V-Z1
09610	B-C-C2-F-F1-F3-M-R-S-U-V-Z1	09714	B-C-C1-C2-F-F3-M-R-R1-S-U	09750	A-B-C1-C2-F-F1-F3-J-L-M-N-R-R1-T-V-Z1	09817	A-B-C1-C2-E2-E3-F1-F3-H-H1-J-L-M-N-R-R1-T-V-Z1
09613	B-C-C2-F-F3-N-R-S-U-V	09715	B-F-F1-J-L-M-N-R-T-V-Z1	09751	B-C-C2-D-E-F-F3-H-M-R-S-U	09818	A-B-C-C2-F-F3-M-R-S-V-Z1
09614	A-B-C1-C2-E2-F-F1-F3-H1-J-L-M-N-R-R1-T-V-W-Z1	09716	B-C-C2-F-F1-F3-J-L-M-N-R-R1-T-V-Z1	09752	B-C-C2-D-F-F3-H-R-S-U	09819	A-B-C-C1-C2-E2-F-F1-F3-H-H1-M-R-R1-S-V-Z1
09618	B-C-C2-F-F3-R-S-U-Z1	09717	A-B-C-C2-F3-M-R-S-V-W-Z1	09753	A-B-C-C1-C2-D-E-F1-F3-H-M-N-R-S-V-W-Z1	09820	A-B-C2-F-F1-F3-H-H1-J-L-M-N-R-R1-T-V-Z1
09620	B-C-C2-F-F3-R-S-U-V-Z1	09718	B-F-F1-J-L-M-N-R-T-U-V-Z1	09754	A-B-C2-F-F3-H-L-N-Q-R-S-V-Z-Z1	09821	A-B-C-C2-F-F3-N-R-S-V-Z1
09621	B-C-F-F3-R-U-Z1	09719	B-C-C2-D-F3-M-R-S-U-V-Z1	09755	A-B-C-C1-C2-D-F-F1-F3-J-L-M-N-Q-R-R1-S-T-V-Z1	09822	A-B-C-C2-F-F3-M-R-S-V-Z1
09622	B-C-C2-F-F3-R-S-U-Z1	09720	B-C2-F3-M-R-S-U-V-Z1	09759	A-B-C-C1-C2-E2-F-F1-F3-J-L-N-R-R1-T-V-Z1	09823	A-B-C1-C2-F-F1-F3-J-L-M-N-R-R1-T-V-Z1
09623	B-C-C2-F-F3-R-S-U-V-Z1	09722	A-B-C2-F-F3-H-N-Q-R-S-V-Z-Z1	09761	B-C2-F-F1-F3-M-R-R1-S-V-Z-Z1	09824	A-B-C-C2-F-F3-M-R-S-V-Z1
09624	B-C-C2-F-F1-F3-I3-L-N-R-R1-T-U-V-Z-Z1	09723	B-C2-F-F1-F3-J-L-M-N-R-R1-T-V-Z1	09762	A-B-C2-E3-F-F1-F3-J-L-N-R-R1-T-V-Z1	09825	A-B-C1-C2-F-F1-F3-J-L-M-N-R-R1-T-V-Z1
09625	B-C-C2-F-F3-N-R-S-U-Z1	09724	B-C-C1-C2-F-F3-M-R-R1-S-U	09769	A-B-C-C1-C2-F-F1-F3-J-L-M-N-R-R1-T-V-Z1	09826	A-B-C1-C2-E1-E2-E3-F-F1-F3-J-L-M-N-R-R1-T-V-W-Z1
09627	B-C-C2-F-F3-R-S-U-V-Z1	09725	A-B-C2-F-F3-H-N-Q-R-S-V-V1-Z-Z1	09777	A-B-C-C1-C2-E1-F-F1-F3-J-L-M-N-R-R1-T-V-Z1	09827	A-B-F-F1-J-L-M-N-R-T-V-Z1
09630	B-C-C2-F-F3-R-S-U-V	09726	B-F-F1-J-L-M-N-R-T-U-V-Z1	09780	A-B-C2-F-F3-H-N-R-S-V	09828	A-B-C1-C2-F-F1-F3-I3-L-N-R-R1-T-V-Z-Z1
09633	B-C-C2-D-F-F3-M-R-S-U-U1-U2-U3-V-Z1	09727	A-B-C1-C2-F-F1-F3-J-L-M-N-R-R1-T-V-Z1	09801	A-B-C1-E2-F-F3-H1-M-N-R-R1-S-V-Z1	09829	B-C-N-R-V-Z1
09634	A-B-C2-F-F3-M-N-R-S-V	09728	A-B-C-C1-C2-F-F1-F3-J-L-N-R-R1-T-V-Z1	09802	A-B-C-C2-D-F-F1-F3-H-H1-I3-L-M-N-R-R1-S-T-V-W-Z-Z1	09830	B-C-F-F1-F3-J-L-M-N-R-R1-S-T-V-Z1
09636	B-C-C2-F-F3-R-S-U-V-Z1	09729	B-C-C2-F-F3-N-R-R1-S-U-V-Z1	09803	A-B-C-C2-E-E2-E3-F1-F3-H-H1-J-M-N-R-R1-S-U-V-Z1	09831	B-C1-C2-F-F1-F3-J-L-N-R-R1-T-V-Z1
09642	B-C2-F-F1-F3-J-L-M-N-R-T-U-V	09730	A-B-C1-C2-F-F1-F3-J-L-M-N-R-R1-T-V-Z1	09804	A-B-C-C2-F-F1-F3-M-N-R-S-V-Z1	09832	A-B-C-C1-C2-E2-E3-F1-F3-H-H1-J-M-N-R-R1-S-V-Z1
09643	B-C-C2-F3-M-R-S-U-V-Z1	09731	A-B-C1-C2-F-F1-F3-J-L-M-N-R-R1-T-V-Z1	09805	B-C-C2-E2-E3-F-F1-F3-R-R1-S-Z1	09834	B-C-C2-E2-E3-F-F1-F3-R-R1-S-U-Z1
09645	B-C-C1-E1-E2-F-F1-F3-M-R-S-U-X-Z1	09732	B-F-F3-N-S-V-Z-Z1	09807	A-B-C1-C2-E2-F-F1-F3-H1-I3-M-N-R-R1-S-T-V-Z-Z1	09836	A-B-C1-C2-F-F1-F3-J-L-M-N-R-R1-T-V-Z1
09647	B-C2-F1-F3-M-N-R-S-U-Z1	09733	B-F-F3-N-R-S-V-Z1	09808	A-B-C1-C2-E2-F-F1-F3-H-H1-J-L-N-R-R1-T-V-Z1	09837	B-E2-E3-F1-F3-R-S-V-Z1
09648	B-C2-F3-N-R-S-U-V-Z1	09734	A-B-C-C1-C2-F-F1-F3-I3-J-L-M-N-R-R1-T-V-Z-Z1	09809	B-C1-C2-E3-F-F1-F3-J-L-N-T-V-Z1	09838	B-C-C2-E2-E3-F-F1-F3-R-S-U-Z1
09649	B-C2-F3-N-R-S-U-Z1	09735	B-F3-N-R-S-V-Z-Z1	09810	A-B-C2-F-F1-F3-N-R-S-V-Z1	09842	A-B-C1-C2-F-F1-F3-J-L-N-R-R1-T-V-Z1
09701	A-B-C1-C2-F-F1-F3-J-L-M-N-R-R1-T-V-Z1	09736	A-B-C1-F-F1-F3-J-L-M-N-R-R1-T-V-Z1	09811	A-B-C-C2-E-E2-E3-F1-F3-H-H1-J-M-N-R-R1-S-U-V-Z1	09844	A-B-C1-C2-F-F1-F3-J-L-M-N-R-R1-T-V-Z1
09702	B-C-C2-F-F1-M-R-R1-S-U	09737	A-B-C1-C2-F-F1-F3-I3-J-L-M-N-R-R1-T-V-W-Y-Z-Z1	09812	B-E2-E3-F-F1-I-J-L-N-R-T-U-V-Z-Z1	09845	A-B-C1-C2-E3-F-F1-F3-J-L-M-N-R-R1-T-V-Z1
09704	B-C-F-F1-F3-R-R1-S-U2-V	09738	A-B-C1-C2-F-F1-F3-J-L-M-N-R-R1-T-V-Z1	09813	A-B-C1-C2-E2-E3-F-F1-F3-J-L-N-R-R1-T-V-Z1	09846	A-B-C1-C2-F-F1-F3-J-L-N-R-R1-T-V-Z1
09705	B-C-C1-C2-F1-F3-M-R-R1-S-U	09739	A-B-C1-C2-F-F1-F3-J-L-M-N-R-R1-T-V-Z1			09847	B-C-C2-F-F1-F3-J-L-M-N-R-R1-S-T-V-Z1
09706	B-C-C2-F3-M-N-R-S-U-V-Z1	09741	A-B-C1-C2-E2-F-F1-F3-H1-J-L-M-N-R-R1-T-V-W-Y-Z1				
09707	B-C2-F-F1-F3-J-L-M-N-R-R1-T-V-Z1	09742	A-B-C2-F-F1-F3-J-L-M-N-R-S-T-V-Z1				
09708	B-C-C1-C2-F-F3-M-R-R1-S-U	09743	A-B-C2-F-F3-H-N-Q-R-S-V-Z-Z1				
09709	B-C1-C2-E2-F-F1-F3-H-H1-J-L-N-R-R1-T-V-Z1	09744	A-B-C1-C2-F-F1-F3-J-L-M-N-R-R1-T-V-Z1				

APO/ FPO/ DPO	See Restrictions	APO/ FPO/ DPO	See Restrictions	APO/ FPO/ DPO	See Restrictions	APO/ FPO/ DPO	See Restrictions
09848	A-B-C2-F-F1-F3-M-R-S-V-Z1	09904	B-C1-E2-F1-F3-S-V-Z1	34033	B-C1-C2-F-F1-F3-I3-L-M-N-R-T-V-Z-Z1	34093	B-C-C2-F-F1-F3-R-R1-S-V
09853	B-C1-C2-E2-F-F1-F3-H1-N-R-R1-S-U2-V-Z1	09908	A-B-C2-F-F1-F3-N-R-R1-S-V-Z1	34034	B-C1-C2-F-F1-F3-I3-L-M-N-R-R1-T-V-Z-Z1	34094	B-F-F1-F3-R-R1-S-V
09854	A-B-C1-C2-F-F1-F3-J-L-N-R-R1-S-T-V-Z1	09909	A-B-C2-F-F1-F3-N-R-R1-S-V-V1-Z1	34035	B-C1-C2-F-F1-F3-H-J-L-M-N-R-R1-T-V-Z1	34095	B-F-F1-R-R1-V
09855	A-B-C-C1-C2-E2-F-F1-F3-H1-M-R-R1-S-U2-V-Z1	09974	B-F1-F3-J-L-M-N-R-S-T-U2-V-X-Z1	34036	B-C1-C2-F-F1-F3-J-L-M-N-R-R1-T-V-Z1	96201	A-B-F-F1-F3-M-R-S-U
09857	A-B-C2-E2-F-F1-F3-13-L-M-N-R-R1-S-T-V-Z-Z1	09975	B-F1-F3-I3-L-M-N-R-S-T-U2-V-X-Z-Z1	34037	B-C-C1-C2-F-F1-F3-H-J-L-M-N-R-R1-T-V-Z1	96202	A-B-C2-F-F1-F3-M-R-S-U
09858	A-B-C-C1-C2-E2-E3-F1-F3-H-H1-J-M-N-R-R1-S-U-V-Z1	09976	B-F1-F3-J-L-M-N-R-S-T-U2-V-X-Z1	34039	B-C1-C2-F-F1-J-L-M-N-T-V-Z1	96203	A-B-F-F1-F3-M-R-S-U
09859	B-C-C1-C2-E2-E3-F-F1-F3-H1-R-R1-S-U-Z1	09977	B-F1-F3-J-L-M-N-R-S-T-U2-V-X-Z1	34041	B-C1-C2-F-F1-F3-J-L-M-N-R-R1-T-V-Z1	96204	A-B-F-F1-F3-M-R-S-U
09860	A-B-C2-F-F1-F3-J-L-M-N-R-R1-S-T-V-Z1	09978	B-C-C2-D-E1-F-F1-F3-H-H1-M-N-R-R1-S-T-X-Z1	34042	A-B-C-F-F1-F3-M-N-R-S-U-V-W-Z1	96205	A-B-C-C2-F-F1-F3-M-R-S-U
09862	A-B-C-C2-F-F1-F3-I3-L-M-N-R-R1-S-T-V-X-Z-Z1	09980	B-C-C1-C2-F1-F3-J-L-M-N-R-R1-S-T-V-X-Z1	34050	B-V	96206	A-B-C-C2-F-F1-F3-M-R-S-U
09864	A-B-C-C1-C2-E2-F1-F3-L-M-N-R-R1-S-T-V-W-Z1	09981	B-C-C1-C2-F1-F3-J-L-M-N-R-R1-S-T-V-X-Z1	34051	B-V	96207	A-B-F-F1-F3-M-R-S-U-V
09867	A-B-C-C1-C2-E2-F1-F3-L-M-N-R-R1-S-T-V-W-Z1	09982	B-C-C1-C2-F1-F3-J-L-M-N-R-R1-S-T-V-X-Z1	34052	B-V	96208	A-B-F-F1-F3-M-R-S-U
09869	A-B-C1-C2-E2-F1-F3-L-M-N-R-R1-S-T-V-W-Z1	09983	B-C-C1-C2-F1-F3-J-L-M-N-R-R1-S-T-V-X-Z1	34053	B-V	96209	A-B-C1-C2-F-F1-J-L-M-N-T-U-V-Z1
09870	A-B-C1-C2-E2-F-F1-F3-H1-I3-L-M-N-R-R1-S-T-U4-V-Z-Z1	09984	B-C-C1-C2-F1-F3-J-L-M-N-R-R1-S-T-V-X-Z1	34054	B-V	96210	A-B-C1-C2-F-F1-F3-I3-L-M-N-R-R1-T-V-Z-Z1
09873	A-B-C1-C2-E2-F-F1-F3-H1-I3-L-M-N-R-R1-S-T-U4-V-Z-Z1	34001	A-B-C1-C2-F-F1-F3-J-L-M-N-R-R1-S-T-V-Z1	34055	B-C1-C2-F-F1-F3-J-L-M-N-R-R1-T-V-Z1	96212	B-F-F1-F2-H-M-W-Z1
09874	A-B-C1-C2-E2-F-F1-F3-H1-I3-L-M-N-R-R1-S-T-U4-V-Z-Z1	34002	B-C1-C2-F-F1-F3-J-L-M-N-R-R1-T-V-Z1	34058	B-C2-F-F1-F2-F3-R-R1-S-V-Z1	96213	A-B-C-C2-F1-F3-N-R-S
09875	A-B-C1-C2-E2-F-F1-F3-H1-I3-L-M-N-R-R1-S-T-U4-V-Z-Z1	34004	B-C1-C2-F-F1-F3-J-L-M-N-R-R1-T-V-Z1	34060	B-C1-C2-E2-F-F1-F3-J-L-M-N-R-R1-T-V-Z1	96214	A-B-C-C2-F1-F3-R-S-U
09877	A-B-C-C2-E-E2-E3-F1-F3-H-H1-J-M-N-R-R1-S-U-V-Z1	34007	B-F-F1-H-J-M-N-R-R1-V-Z1	34066	B-C1-C2-F-F1-F3-I3-J-L-M-N-R-R1-S-T-V-X-Z-Z1	96218	A-B-F-F1-F3-M-R-S-U
09880	A-B-C1-C2-E2-F-F1-F3-H1-J-L-N-R-R1-S-T-U-V-Z1	34008	B-C1-C2-D-E1-F-F1-H-H1-J-L-M-N-R-R1-T-V-Z1	34067	B-C1-C2-F-F1-F3-J-L-M-N-R-R1-S-T-V-X-Z1	96224	A-B-F-F1-F3-M-R-S-U
09890	B-E2-F-H1-N-R-R1-U2-V-Z1	34009	B-C2-F-F1-F3-R-S-V	34068	B-C1-C2-F-F1-F3-J-L-M-N-R-R1-S-T-V-X-Z1	96251	A-B-F-F1-F3-M-R-S-U
09892	A-B-C1-C2-E2-F-F1-F3-J-L-M-N-R-R1-T-V-Z1	34010	B-C2-F-F1-F3-R-S-V	34069	B-C1-C2-F-F1-F3-I3-J-L-M-N-R-R1-S-T-V-X-Z-Z1	96257	A-B-F-F1-F3-S-U
09895	A-B-C1-C2-E2-F-F1-F3-J-L-M-N-R-T-V-W-Z1	34011	B-C1-C2-E2-F-F1-F3-J-L-M-N-R-R1-T-V-Z1	34072	B-C-C2-F1-F3-J-L-M-N-R-S-T-V-X-Z1	96258	A-F-F3-M-P-R-S-U
09898	B-C-C1-C2-E2-F-F1-F2-H1-N-R-R1-S-U2-V-Z1	34020	B-C1-C2-F-F1-F3-J-L-M-N-R-R1-T-V-Z1	34078	B-F1-F3-N-R-S-V-Z1	96260	A-B-F-F1-F3-M-R-S-U
09902	A-B-C1-C2-E2-F-F3-H1-M-R-R1-S-V-Z1	34021	B-C1-C2-F-F1-F3-J-L-M-N-R-R1-T-V-Z1	34080	B-F-F1-R-R1-V	96262	A-B-C2-F-F1-F3-R-S-U-V-Z1
09903	B-C1-E2-F1-F3-S-V-Z1	34022	B-C1-C2-F-F1-F3-J-L-M-N-R-R1-T-V-Z1	34081	B-F-F1-R-R1-V	96264	A-B-C-C2-F1-F3-R-S-U
		34023	B-C1-C2-F-F1-F3-J-L-M-N-R-R1-T-V-Z1	34082	B-F-F1-R-R1-V	96266	A-B-C-C2-F1-F3-R-S-U
		34024	B-C1-C2-F-F1-F3-J-L-M-N-R-R1-T-V-Z1	34083	B-F-F1-R-R1-V	96269	A-B-C-C2-F1-F2-F3-R-S-U-Z1
		34025	B-F-F1-F3-J-L-M-N-R-R1-T-V-Z1	34084	B-F-F1-R-R1-V	96271	A-F-F3-M-P-R-S-U
		34030	B-C1-C2-F-F1-F3-J-L-M-N-R-R1-T-V-Z1	34085	B-C-C1-C2-E2-E3-F-F1-F3-H1-J-R-R1-S-T-V-V1	96273	A-B-C2-F-F1-F3-M-R-S-U
		34031	B-C1-C2-F-F1-F3-J-L-M-N-R-R1-T-V-Z1	34086	B-C-C1-C2-E2-E3-F-F1-F3-H1-J-R-R1-S-T-V-V1	96275	A-B-F-F1-F3-M-R-S-U
		34032	B-C1-C2-F-F1-F3-J-L-M-N-R-R1-T-V-Z1	34087	B-C-C2-E2-F-F1-F3-R-R1-S-V	96276	A-B-C-C2-F1-F3-R-S
				34088	B-C-C2-F-F1-F3-R-R1-S-V	96278	A-B-C-C2-F1-F3-R-S-U
				34089	B-C-C2-F-F1-F3-R-R1-S-V	96283	A-B-F-F1-F3-S-U
				34090	B-C-C2-F-F1-F3-R-R1-S-V	96284	A-B-C2-F-F1-F3-M-R-S-U
				34091	B-C-C2-E2-E3-F-F1-F3-R-R1-S-V-Z1	96297	A-B-F-F1-F3-R-S-U
				34092	B-C-C2-F-F1-F3-R-R1-S-V-Z1	96300	A-B-F3-M-R-S-V-Z1
						96301	A-B-C-C2-F-F3-M-N-R-S-U2-W
						96303	B-C1-C2-F-F1-H-J-L-M-N-T-V-W-Z1

APO/ FPO/ DPO	See Restrictions	APO/ FPO/ DPO	See Restrictions	APO/ FPO/ DPO	See Restrictions	APO/ FPO/ DPO	See Restrictions
96306	B-F-F1-F2-F3-H-M-R-S-W-Z1	96384	B-F-F3-M-R-S-W	96554	A-B-C1-C2-F-F1-H-J-L-M-N-R-R1-S-T-V-Z1	96660	B-C-C2-F-F1-F3-R-R1-S-V
96309	B-C-C2-F-F1-F3-M-N-R-S-V-W	96385	B-F-F3-M-R-S-W	96555	A-B-F-F3-M-R-S-V	96661	B-C-C2-F-F1-F3-R-R1-S-V
96310	B-F3-M-R-S-W	96386	B-F3-M-S-W	96557	A-B-F-F3-M-R-S-V	96662	B-C-C2-F-F1-F3-R-R1-S-V
96311	B-F3-M-R-S-W	96387	B-F3-M-R-S-W	96562	A-B-C1-C2-D-E2-E3-F-F1-H-H1-I3-L-M-N-R-R1-S-T-V-Z-Z1	96663	B-C-C2-F-F1-F3-R-R1-S-V
96315	B-F-F1-F3-H-M-R-S-W	96388	B-F3-M-R-S-W			96664	B-C-C2-F-F1-F3-R-R1-S-V
96319	B-C-C2-F3-M-R-S-W	96389	B-M-W	96577	A-B-C2-F-F3-H-M-N-R-S-U	96665	B-C-C2-F-F1-F3-R-R1-S-V
96321	B-F-F1-F2-F3-H-M-R-S-W-Z1	96401	B-C-F-F3-N-R-S-V-V1-Z1	96578	B-F1-F3-H-J-N-R-S	96666	B-C-C2-F-F1-F3-R-R1-S-V
96322	B-F-F1-F2-F3-H-M-R-S-W-Z1	96502	A-C-C1-C2-F-F1-F3-J-M-N-R-R1-S-T-U-V	96595	B-F-F3-R-S-V-Z1	96667	B-C-C2-F-F1-F3-R-R1-S-V
96326	B-C-C2-F-F3-M-R-S-W	96504	A-B-C-C1-C2-F-F1-F3-I3-L-M-N-R-R1-T-V-W-Z-Z1	96598	B-C2-F3-I3-N-R-S-V-V1	96668	B-C-C2-F-F1-F3-R-R1-S-V
96328	B-C-C2-F3-M-R-S-W	96505	A-B-C-C1-C2-F-F1-F3-I3-L-M-N-R-R1-S-T-V-W-Z-Z1	96599	B-C2-F3-N-R-S-V	96669	B-C-C2-F-F1-F3-R-R1-S-V
96331	A-B-C-C2-F-F1-F3-J-L-M-N-R-S-U2-W	96507	A-B-C1-C2-F-F1-H-J-L-M-N-T-V-Z1	96601	B-V	96670	B-C-C2-F-F1-F3-R-R1-S-V
96336	B-C-C2-F3-M-R-S-V-W	96510	B-I3-N-V	96602	B-V	96671	B-C-C2-F-F1-F3-R-R1-S-V
96337	B-C2-F-F1-F3-M-R-R1-S-W	96511	B-I3-N-V	96603	B-V	96672	B-C-C2-F-F1-F3-R-R1-S-V
96338	A-B-C-C2-F-F3-M-R-S-U2-W	96515	B-C-D-E1-F-F1-F3-H-H1-M-N-R-S-T-Z1	96604	B-V	96673	B-C-C2-F-F1-F3-R-R1-S-V
96339	A-B-F-F3-M-R-S-U2-W	96516	B-C-C2-D-E1-E2-F-F1-F3-H-H1-M-N-R-S-T-Z1	96605	B-V+B559	96674	B-C-C2-F-F1-F3-R-R1-S-V
96343	A-F-F3-M-P-R-S-U2	96517	B-C-D-E1-E2-F-F1-F3-H-H1-M-N-R-T-U-V-Z1	96606	B-F3-R-S-V	96675	B-C-C2-F-F1-F3-R-R1-S-V
96346	B-F-F1-F2-F3-H-M-R-S-W-Z1	96520	B-F-N-U3-V	96607	B-V	96677	B-C-C2-F-F1-F3-R-R1-S-V
96347	B-C2-F-F1-F2-F3-H-M-R-S-W-Z1	96521	B-C1-C2-F-F1-J-L-M-N-R-R1-S-T-V-Z1	96608	B-E2-F-H1-R1-U2-V-Z1	96678	B-C-C2-F-F1-F3-R-R1-S-V
96349	B-C-C2-F-F1-F2-F3-H-M-R-S-Z1	96530	A-B-C1-C2-F-F1-H-H1-J-L-M-N-R-R1-S-T-V-Z1	96609	B-E2-F-H1-R1-U2-V-Z1	96679	B-C-C2-F-F1-F3-R-R1-S-V
96350	B-F-F1-F2-F3-H-M-R-S-W-Z1	96531	A-B-C-C2-F-F1-F3-H-M-N-R-S-U-V	96610	B-C-C2-F-F3-H1-R-R1-S-U2-V-Z1	96681	B-V
96351	B-C2-F-F1-F2-F3-H-M-R-S-W-Z1	96532	A-B-C1-C2-F-F1-H-J-L-M-N-R-R1-S-T-V-Z1	96611	B-C-C2-F-F3-H1-R-R1-S-U2-V-Z1	96682	B-C-C2-F-F1-F3-R-R1-S-V
96362	B-C2-F-F1-F2-F3-H-M-R-S-W-Z1	96533	A-B-C-C2-F-F1-F2-F3-R-R1-S-U-V-Z1	96612	B-C-C2-F-F3-H1-R-R1-S-U2-V-Z1	96683	B-C-C2-F-F1-F3-R-R1-S-V
96365	B-C-C2-F3-M-R-S-W-V	96535	A-B-C1-C2-F-F1-J-L-M-N-R-R1-S-T-V-Z1	96613	B-C-C2-F-F3-H1-R-R1-S-U2-V-Z1	96686	B-C-C2-F-F1-F3-R-R1-S-V
96367	B-C-C2-F3-L-M-R-S-W	96537	B-V-Z1	96615	B-F-F1-R-R1-V	96691	B-C-C2-F-F1-F3-R-R1-S-V
96368	B-C-C2-F3-M-R-S-W	96540	B-F1-F2-F3-S-V-Z1	96616	B-C2-F-F1-F3-R-R1-S-V	96692	B-C-C2-F-F1-F3-R-R1-S-V
96370	B-F-F1-F2-H-M-W-Z1	96542	B-F-F1-F2-F3-S-V-Z1	96619	B-F1-F3-R-S-V	96693	B-C-C2-F-F1-F3-R-R1-S-V
96371	B-F-F3-M-R-S-W	96543	B-F-F1-F2-F3-P-S-V-Z1	96620	B-C-C2-F-F1-F3-R-R1-S-V	96694	B-C-C2-F-F1-F3-I3-J-R-R1-S-V-Z
96372	B-M-W	96548	A-B-C2-F-F1-F3-H-M-R-S-U	96628	B-C-C2-F-F1-F3-R-R1-S-V	96695	B-C-C2-F-F1-F3-R-R1-S-V
96373	B-M-W	96549	A-B-C1-C2-F-F1-H-J-L-M-N-R-R1-S-T-V-Z1	96629	B-C-C2-F-F1-F3-R-R1-S-V	96696	B-F-F1-R-R1-V
96374	B-M-W	96550	A-B-H-M-N-U-V-Z1	96632	B-C-C2-F-F1-F3-R-R1-S-V	96698	B-C-C2-F-F1-F3-R-R1-S-V
96375	B-F3-M-R-S-W	96551	A-B-C1-C2-F-F1-H-J-L-M-N-R-R1-S-T-V-Z1	96633	B-V		
96376	B-F3-M-R-S-W	96552	B-Z1	96641	B-V		
96377	B-C-C2-F-F3-M-R-S-W	96553	A-B-C2-F-F1-F3-H-M-N-R-S-U	96642	B-V		
96378	B-M-W			96643	B-F-F1-F3-R-R1-S-V		
96379	B-C2-F3-M-R-S-W			96644	B-V		
96380	B-F3-M-R-S-W			96645	B-V		
96382	B-F-F3-M-R-S-W			96649	B-C-C2-F-F1-F3-R-R1-S-V		
				96650	B-F-F1-R-R1-V		
				96657	B-C-C2-F-F1-F3-R-R1-S-V		

RESTRICTIONS

LEGEND

PS Form 2976, *Customs — CN 22 (Old C 1) and Sender's Declaration* (green label)

PS Form 2976-A, *Customs Declaration and Dispatch Note*

PS Form 2976-B, *Priority Mail Express International Shipping Label and Customs Form*

ATF	= Bureau of Alcohol, Tobacco, Firearms, and Explosives
Box C	= Department of State (DOS) contractor personnel
Box R	= Retired military personnel
DPO	= Diplomatic Post Office
MPO	= Military Post Office
PACT	= Prevent All Cigarette Trafficking Act
PAL	= Parcel Airlift
PMEMS	= Priority Mail Express Military Service
PUB 52	= Publication 52, <i>Hazardous, Restricted, and Perishable Mail</i>
SAM	= Space Available Mail
USDA	= United States Department of Agriculture

Note: Mail order catalogs are prohibited as SAM or PAL mail.

A. Securities, currency, or precious metals, including in their raw, unmanufactured state, are prohibited. Official Mail shipments are exempt from this restriction.

A1. Reserved for future use.

A2. Reserved for future use.

B. Other than for PMEMS and the exceptions listed below, a customs declaration PS Form 2976 or PS Form 2976-A is required for all items weighing 16 ounces or more, and for all items (regardless of weight) containing potentially dutiable mail contents (e.g., merchandise or goods) addressed to or from this ZIP Code. Other than the exceptions listed below, all PMEMS mailpieces (regardless of mail contents or weight) addressed to or from this ZIP Code must bear a properly completed PS Form 2976-B. The surface area of the address side of the mailpiece must be large enough to contain the applicable customs declaration. The following exceptions apply to known mailers, who for this purpose are defined as follows:

- Business mailers who enter volume mailings through business mail entry units or other bulk mail acceptance locations, pay postage through advance deposit accounts, use permit imprints for postage payment, and submit completed postage statements at the time of entry that certify that the mailpieces contain no dangerous materials that are prohibited by postal regulations. Such business mailers are exempt from providing customs documentation on non-dutiable letters and printed matter.
- All federal, state, and local government agencies whose mailings are regarded as "Official Mail." Such agencies are exempt from providing customs documentation, except for any items addressed to an MPO or DPO to which restriction "B2" applies.

B2. All federal, state, and local government agencies must complete customs documentation when sending potentially dutiable mail addressed to or from this MPO or DPO.

C. Cigarettes and other tobacco products, including tobacco leaves, chewing and pipe tobacco, snuff, and cigars are prohibited, including those that are authorized in Publication 52 under PACT.

C1. Obscene and horror articles, images, prints, paintings, cards, films, videotapes, comic books, etc., are prohibited.

C2. E-cigarettes and related products (e.g., nicotine liquids, e-liquids, parts, or supplies) are prohibited.

D. Coffee is prohibited.

E. Medicines (prescription, over-the-counter, vitamins, and supplements) are prohibited when mailed to individuals for human or animal use. This prohibition does not apply when medicines are sent as Official Mail only between specifically designated agencies such as pharmaceutical distributors, hospitals, clinics, and pharmacies.

E1. Mailers are responsible to ensure that all medicines and vaccines conform to host nation laws.

E2. Any matter depicting nude or seminude persons, pornographic, or sexual items are prohibited. Non-authorized political materials are prohibited. Religious materials contrary to the Islamic faith are prohibited in bulk quantities, but individual items for the personal use of the addressee are permissible.

E3. Radio transceivers, cordless/cellular telephones, global positioning systems, scanners, base stations, and handheld transmitters are prohibited.

F. Firearms of any type are prohibited, except firearms mailed to or by official U.S. government agencies. This restriction does not apply to firearms mailed from this MPO ZIP Code, provided ATF and USPS regulations are met. Antique firearms do not require an ATF form.

F1. Weapons of any type are prohibited.

F2. Mailing firearms to or from this MPO ZIP Code is restricted to one shotgun and one single shot .22 caliber rifle per individual.

F3. Replica weapons and inert explosive devices (such as grenades) and weapons parts are prohibited.

G. Parcels of any class are prohibited.

H. Meats, including preserved meats, bones, skin, hair, feathers, horns or hoofs of hoofed animals, and wool samples whether hermetically sealed or not, are prohibited.

H1. Pork or pork by-products are prohibited.

I. Reserved for future use.

I1. Reserved for future use.

I2. Reserved for future use.

I3. Mail of all classes must fit in a mail sack. Mail may not exceed the following dimensions:

- Maximum length 27 inches.
- Maximum width 14 inches.
- Maximum height 14 inches.

J. Standard Post and Parcel Select parcels may not exceed 108 inches in length and girth combined.

K. Reserved for future use.

L. All Official Mail is prohibited.

M. Fruits, vegetables, live animals, and live plants are prohibited.

N. Registered Mail service is prohibited.

O. Reserved for future use.

P. Official Mail only.

Q. Mail may not exceed 66 pounds, and size is limited to 42 inches maximum length and 72 inches maximum length and girth combined.

R. All alcoholic beverages, including those available under Publication 52, Part 421, are prohibited.

R1. Materials used in the production of alcoholic beverages (i.e., distilling material, hops, malts, yeast, etc.) are prohibited.

S. Synthetic cannabinoids used to stimulate the central nervous system commonly known as "synthetic marijuana," "K2," or "Spice" are prohibited.

T. Mailings of household shipments and case lots of food to or from an MPO require military transportation office approval prior to mailing. Mailings to or from a DPO require pre-approval from the Diplomatic Pouch and Mail Director.

U. Mail addressed to Retirees (Box R) is limited to 16 ounces and up to a 90-day supply of TRICARE medications. This restriction does not apply to mail endorsed "Free Matter for the Blind or Handicapped."

U1. Mail is limited to First-Class Mail items, including audio and video media, weighing 13 ounces or less. This limitation does not apply to Official Mail.

U2. Retirees (Box R) are not authorized mail service.

U3. Reserved for future use.

U4. Mail addressed to Box C is limited to 2 lbs.

V. PMEMS is not available.

V1. Electronic Delivery status information for Extra Services is not available on *USPS.com*. Manual record of delivery may be available upon request.

W. Hermetically sealed packages of meat products bearing USDA certification, such as dried beef, salami, and sausage, may be mailed. 200 grams of tobacco per parcel are permitted duty free.

X. Cremated remains are prohibited.

Y. Mail is limited to First-Class Mail and Priority Mail items only. This restriction also applies to Official Mail.

Z. No outside pieces (OSPs).

Z1. The following restriction is applicable only to International Service Centers (ISC)/Exchange Offices. An Anti-Pilferage Seal (Item No 0817E or 0818A) is required on all pouches and sacks.

— *International Network Operations,
Global Business, 10-20-22*

Thrift Savings Plan Fact Sheet

ANNUAL RETURNS	G Fund	F Fund	U.S. Aggregate Index	C Fund	S&P 500 Stock Index	S Fund	Dow Jones U.S. Completion TSM Index	I Fund	EAFE Stock Index
2015	2.04	0.91	0.55	1.46	1.38	-2.92	-3.42	-0.51	-0.81
2016	1.82	2.91	2.65	12.01	11.96	16.35	15.75	2.10	1.00
2017	2.33	3.82	3.54	21.82	21.83	18.22	18.12	25.42	25.03
2018	2.91	0.15	0.01	-4.41	-4.38	-9.26	-9.57	-13.43	-13.79
2019	2.24	8.68	8.72	31.45	31.49	27.97	27.94	22.47	22.01
2020	0.97	7.50	7.51	18.31	18.40	31.85	32.17	8.17	7.82
2021	1.38	-1.46	-1.54	28.68	28.71	12.45	12.35	11.45	11.26

The G Fund is managed internally by the Federal Retirement Thrift

MONTHLY RETURNS	G Fund	F Fund	U.S. Aggregate Index	C Fund	S&P 500 Stock Index	S * Fund	Dow Jones U.S. Completion TSM Index	I * Fund	EAFE Stock Index
2021									
Oct	0.13	-0.04	-0.03	7.00	7.01	5.43	5.42	2.46	2.46
Nov	0.13	0.30	0.30	-0.69	-0.69	-5.03	-5.03	-4.66	-4.65
Dec	0.12	-0.32	-0.26	4.48	4.48	0.58	0.55	5.10	5.12
2022									
Jan	0.13	-2.09	-2.15	-5.18	-5.17	-10.07	-10.09	-3.96	-4.83
Feb	0.14	-1.08	-1.12	-2.99	-2.99	0.03	-0.02	-2.61	-1.77
Mar	0.17	-2.73	-2.78	3.72	3.71	0.90	0.86	-0.33	0.64
Apr	0.20	-3.75	-3.79	-8.72	-8.72	-10.57	-10.58	-6.39	-6.47
May	0.21	1.13	0.64	-1.65	0.18	-3.53	-2.24	1.19	0.75
June	0.29	-1.94	-1.57	-6.55	-8.25	-7.95	-9.26	-8.21	-9.28
July	0.26	2.47	2.44	9.22	9.22	10.32	10.26	5.15	4.98
Aug	0.25	-2.80	-2.83	-4.08	-4.08	-2.08	-2.11	-5.79	-4.75
Sept	0.28	-4.31	-4.32	-9.21	-9.21	-9.91	-9.93	-9.40	-9.35
YTD	1.94	-14.30	-14.61	-23.87	-23.87	-29.85	-30.09	-27.25	-27.09

Investment Board. Assets of the F, C, S, and I Funds are managed externally. The Board currently has contracts with BlackRock Institutional Trust Company, N.A., to manage the F, C, S, and I Fund assets. The F, C, S, and I Funds invest in commingled trust funds, in which the assets of tax-deferred employee benefit plans are combined and invested together. The F, C, S, and I Funds and the BlackRock funds are passively managed index funds.

Future performance of the funds will vary and may be significantly different from the returns shown above. See the *Summary of the Thrift Savings Plan* for detailed information about the funds and

their investment risks. The monthly returns of the TSP Funds represent net earnings for the month after deduction of accrued administrative expenses and, except for the G Fund, after deduction of trading costs and accrued investment management fees as well. The returns for the four indexes shown do not include any of these deductions.

* Implemented May 2001.

See next page for L Funds.

L Funds

Annual Returns	L Income	L 2020	L 2030	L 2040	L 2050
2015	1.85	1.35	1.04	0.73	0.45
2016	3.58	5.47	7.07	7.90	8.65
2017	6.19	9.86	14.54	16.77	18.81
2018	0.71	-0.36	-3.58	-4.89	-6.02
2019	7.60	9.38	17.60	20.69	23.33
2020	5.15		11.26	13.16	14.79

Annual Returns	L Income	L 2025	L 2030	L 2035	L 2040	L 2045	L 2050	L 2055	L 2060	L 2065
2021	5.42	9.75	12.37	13.43	14.51	15.40	16.34	19.90	19.90	19.90

Monthly Returns	L Income	L 2025	L 2030	L 2035	L 2040	L 2045	L 2050	L 2055	L 2060	L 2065
2021										
Oct	1.28	2.33	3.14	3.43	3.72	3.97	4.22	5.12	5.11	5.11
Nov	-0.50	-1.09	-1.55	-1.72	-1.89	-2.04	-2.20	-2.71	-2.71	-2.71
Dec	1.06	1.90	2.54	2.76	2.99	3.17	3.37	4.08	4.08	4.08
2022										
Jan	-1.28	-2.37	-3.33	-3.68	-4.01	-4.32	-4.60	-5.41	-5.42	-5.42
Feb	-0.51	-1.01	-1.45	-1.61	-1.76	-1.89	-2.01	-2.38	-2.38	-2.38
Mar	0.49	0.85	1.14	1.21	1.29	1.34	1.42	1.88	1.88	1.87
Apr	-2.04	-3.59	-5.12	-5.63	-6.12	-6.56	-6.97	-8.11	-8.11	-8.11
May	0.04	-0.15	-0.35	-0.41	-0.48	-0.54	-0.61	-0.89	-0.89	-0.89
June	-1.60	-2.98	-4.37	-4.84	-5.29	-5.69	-6.07	-7.25	-7.25	-7.25
July	2.21	3.50	5.00	5.47	5.92	6.33	6.71	7.89	7.90	7.90
Aug	-1.04	-1.83	-2.74	-3.03	-3.30	-3.55	-3.77	-4.36	-4.36	-4.36
Sept	-2.33	-3.98	-5.85	-6.44	-7.01	-7.50	-7.97	-9.29	-9.29	-9.29
YTD	-6.00	-11.20	-16.24	-17.92	-19.50	-20.90	-22.18	-25.62	-25.62	-25.63

The TSP also added six new L Funds that have 5-year increments rather than the previous 10-year increments.

Freely Associated States Restrictions

We list the mailing restrictions for Freely Associated States (FAS) in the Pull-Out section of the *Postal Bulletin*. All FAS Restrictions will be updated periodically.

Freely Associated States

Mail addressed to freely associated states is subject to certain conditions or restrictions of mailing regarding content, preparation, and handling. The following FAS Restrictions table outlines these conditions as listed by each affected FAS ZIP Code™ through the use of footnoted mailing restrictions codes (see the [Restrictions](#) following the table). For more information on available extra services for FAS destinations, see *Mailing Standards of the United States Postal Service, Domestic Mail Manual (DMM®)*, part 503.

Acceptance clerks must use the table with the Retail System Software terminal to determine which FAS ZIP Codes are active and which conditions of mailing apply.

FAS Restrictions Table

FAS Table	See Restrictions
96939	A, B
96940	A, B
96941	A, B
96942	A, B
96943	A, B
96944	A, B
96960	A, B
96970	A, B, D
Marshall Islands	C
Federated States of Micronesia	C

RESTRICTIONS LEGEND

PS Form 2976, *Customs Declaration CN 22* — *Sender's Declaration*

PS Form 2976-A, *Customs Declaration and Dispatch Note*

FAS = Freely Associated State

- A.** Bank currency (coin and paper) is prohibited.
- B.** Signature Confirmation, Signature Confirmation Restricted Delivery, Adult Signature Requested, Adult Signature Restricted Delivery, Certified Mail Adult Signature Required, and Certified Mail Adult Signature Restricted Delivery not available.
- C.** Collect on Delivery is prohibited.
- D.** Betel nut (Areca catechu) is prohibited.

— *Asia-Pacific Relations,
Global Business, 10-20-22*

Christmas Pay Procedures for Rural Carriers (continued)

Exhibit 3. Regular Carrier Works Designated Holiday

NEWHOUSE SA										XX-XXXX			XXXXXXXXXX			71-0		K012			B		23		01				
Name of Assigned Carrier										Finance Number			EIN			Des/Act		Route No			FLSA		Year		PP				
	Actual		Days Assigned Carrier Absent						Daily Overtime	Training Hours	COP Hours	Limited Duty Hours	Relief Hours	Second Trip	Route Dev.	GT Veh	Miles Omit	Xmas Assist Work Hours											
	Weekly Hours		Sat.	Mon.	Tue.	Wed.	Thur.	Fri.																					
1	4429 Hours 100s			K																									
2	4151 Hours 100s		V	K																									
										Week 1 Information										Week 2 Information									
Des/Act	Name of Relief Carrier						EIN			Actual Weekly Hours	Tr	No EM	EM	Second Trip	Whole Miles		Actual Weekly Hours	Tr	No EM	EM	Second Trip	Whole Miles							
															Dev +	Omit -						Dev +	Omit -						
78-0	HOKENESS PN						XXXXXXXXXX			0829 Hours 100s	1				Min						Min								
										Hours 100s				Min						Min									
										Hours 100s				Min						Min									
										Hours 100s				Min						Min									
This certifies that the above carrier rendered service in compliance with Postal Service regulations										Postmaster's Signature <i>Bob C. Anderson</i>					Date 12/30/2022					Carriers Initials SN					8127 Time (Min)				

PS Form 1314, August 2009 (Page 1 of 2) PSN 7530-01-1-014-6844

United States Postal Service Regular Rural Carrier Time Certificate

1. A regular carrier's relief day is Monday. The carrier works the designated holiday on Saturday, December 24.
2. Enter V on Saturday of Week 2.
3. Include hours worked on the designated holiday in the Actual Weekly Hours block.
4. The carrier is not entitled to an X day for working the holiday.
5. Do **NOT** enter Holiday work hours in the Daily Overtime block.
6. The carrier will receive 150 percent of one day's evaluation for working the designated Christmas holiday.

Note: Regular rural carriers cannot work on Sunday, December 25, or the observed holiday on Monday, December 26.

Exhibit 4. Regular Carrier Provides Christmas Assistance

FISCHER KB										XX-XXXX			XXXXXXXXXX			71-0		K014		B	22	26
Name of Assigned Carrier										Finance Number			EIN			Des/Act		Route No		FLSA	Year	PP
	Actual	Days Assigned Carrier Absent						Daily Overtime	Training Hours	CDP Hours	Limited Duty Hours	Relief Hours	Second Trip	Route Dev.	GT Veh.	Miles Omit	Xmas Assist Work Hours					
	Weekly Hours	Sat.	Mon.	Tue.	Wed.	Thur.	Fri.											Hours	100s	Hours	100s	Hours
1	4150				K			Hours 100s	Hours 100s									Hours 100s				
2	4309				K			Hours 100s	Hours 100s					025				0725				
										Week 1 Information						Week 2 Information						
Des/Act	Name of Relief Carrier		EIN		Actual Weekly Hours	Tr	No EM	EM	Second Trip	Whole Miles		Actual Weekly Hours	Tr	No EM	EM	Second Trip	Whole Miles					
										Dev +	Omit -						Dev +	Omit -				
78-0	SMITH TL		XXXXXXXXXX		0829	1			Min			0810	1			Min						
					Hours 100s				Min			Hours 100s				Min						
					Hours 100s				Min			Hours 100s				Min						
					Hours 100s				Min			Hours 100s				Min						
This certifies that the above carrier rendered service in compliance with Postal Service regulations					Postmaster's Signature <i>Bob C. Anderson</i>					Date 12/16/2022		Carriers Initials KF			8127 Time (Min)							

PS Form 1314, August 2009 (Page 1 of 2) PSN 7530-01-1-014-6844

United States Postal Service **Regular Rural Carrier Time Certificate**

1. A carrier works 7.25 hours of Christmas assistance on the relief day Wednesday, Week 2, and uses a personal vehicle for 25 miles.
2. Enter 0725 hours in Xmas Assist Work Hours. Do **NOT** include these hours in the total work hours for the week on PS Form 1314.
3. Enter the 25 miles traveled on the relief day in whole miles in the Route Deviation block.
4. No manual computation for Christmas overtime is necessary. This is automatically computed. Do **NOT** enter Christmas assistance in the Daily Overtime block.

Exhibit 5. FLSA Code A Regular Carrier

LAWRENCE LL										XX-XXXX				XXXXXXXXXX				71-0		K015				A		22		26																					
Name of Assigned Carrier										Finance Number				EIN				Des/Act		Route No				FLSA		Year		PP																					
Actual Weekly Hours		Days Assigned Carrier Absent						Daily Overtime		Training Hours		COP Hours		Limited Duty Hours		Relief Hours		Second Trip		Route Dev		GT Veh		Miles Omit		Xmas Assist Work Hours																							
3988		R						0032																																									
Hours 100s								Hours 100s		Hours 100s		Hours 100s		Hours 100s										Hours 100s																									
1								Hours 100s		Hours 100s		Hours 100s		Hours 100s										0600																									
Hours 100s								Hours 100s		Hours 100s		Hours 100s		Hours 100s										Hours 100s																									
2								Hours 100s		Hours 100s		Hours 100s		Hours 100s										Hours 100s																									
										Week 1 Information										Week 2 Information																													
Des/Act		Name of Relief Carrier				EIN				Actual Weekly Hours		Tr		No EM		EM		Second Trip		Whole Miles Dev + Omit -		Actual Weekly Hours		Tr		No EM		EM		Second Trip		Whole Miles Dev + Omit -																	
78-0		OBRIEN JB				XXXXXXXXXX				Hours 100s								Min				Hours 100s		1						Min																			
										Hours 100s								Min				Hours 100s						Min																					
										Hours 100s								Min				Hours 100s						Min																					
										Hours 100s								Min				Hours 100s						Min																					
This certifies that the above carrier rendered service in compliance with Postal Service regulations										Postmaster's Signature <i>Bob C. Anderson</i>										Date 12/16/2022										Carriers Initials LL										8127 Time (Min)									

PS Form 1314, August 2009 (Page 1 of 2) PSN 7530-01-1-014-6844

United States Postal Service Regular Rural Carrier Time Certificate

1. A regular carrier whose FLSA code is A is paid by the hour. Overtime is paid for all hours over 8 in a day or 40 in a week.
2. The carrier works 8.32 hours on Tuesday of Week 1. Enter 0032 hours in the Daily Overtime block.
3. The carrier works relief day (Saturday) in Week 1. Enter DACA Code R on Saturday, Week 1. Include these hours in the Actual Weekly Hours block. The carrier is paid for these hours, so **no X day is due**.
4. The carrier works 39.88 total hours in Week 1.
5. The carrier works Christmas assistance (6 hrs.) on the relief day on the second Saturday. Record the Christmas assistance time in the Xmas Assist Work Hours block. Do **NOT** add these hours to the Actual Weekly Hours block. Overtime will only be paid if the carrier exceeds 40 hours for the week.
6. No manual computation for Christmas overtime is necessary. This is automatically computed. The carrier will receive 0.32 hours of overtime in Week 1 and 0.08 hours of overtime ($34.08 + 06.00 = 40.08$ hours) in Week 2.

Exhibit 6. Designation 74 Works Designated Holiday

FLETCHER CA										XX-XXXX				XXXXXXXXXX				74-0		J012			P	23	01														
Name of Assigned Carrier										Finance Number				EIN				Des/Act		Route No			FLSA	Year	PP														
<table border="1"> <tr> <th rowspan="2">Actual Weekly Hours</th> <th colspan="7">Days Assigned Carrier Absent</th> </tr> <tr> <th>Sat.</th> <th>Mon.</th> <th>Tue.</th> <th>Wed.</th> <th>Thur.</th> <th>Fri.</th> <th>Sun.</th> </tr> </table>										Actual Weekly Hours	Days Assigned Carrier Absent							Sat.	Mon.	Tue.	Wed.	Thur.	Fri.	Sun.	Daily Overtime		Training Hours		COP Hours		Limited Duty Hours		Relief Hours		Second Trip	Route Dev.	GT Veh	Miles Omit	Xmas Assist Work Hours
Actual Weekly Hours	Days Assigned Carrier Absent																																						
	Sat.	Mon.	Tue.	Wed.	Thur.	Fri.	Sun.																																
4150 Hours 100s																																							
4309 Hours 100s																																							
J Hours 100s																																							
2 Hours 100s																																							

Week 1 Information										Week 2 Information									
Des/Act	Name of Relief Carrier		EIN	Actual Weekly Hours	Tr	No EM	EM	Second Trip	Whole Miles Dev + Omit -		Actual Weekly Hours	Tr	No EM	EM	Second Trip	Whole Miles Dev + Omit -			
				Hours 100s				Min			Hours 100s				Min				
				Hours 100s				Min			Hours 100s				Min				
				Hours 100s				Min			Hours 100s				Min				
				Hours 100s				Min			Hours 100s				Min				

This certifies that the above carrier rendered service in compliance with Postal Service regulations										Postmaster's Signature <i>Bob C. Anderson</i>										Date 12/30/2022		Carriers Initials CA			8127 Time (Min)	
--	--	--	--	--	--	--	--	--	--	--	--	--	--	--	--	--	--	--	--	--------------------	--	-------------------------	--	--	-----------------	--

PS Form 1314, August 2009 (Page 1 of 2) PSN 7530-01-1-014-6844

United States Postal Service **Regular Rural Carrier Time Certificate**

1. A rural carrier associate is assigned to a vacant J route, with the relief day on Monday of Week 2.
2. The carrier works the designated Christmas holiday on Saturday, December 24.
3. Do not enter V or H for working the Christmas holiday. Designation 74s are not entitled to holiday leave pay. Saturday of Week 2 is a regular work day.
4. Include hours worked on Saturday of Week 2 in the Actual Weekly Hours block.
5. A replacement carrier is not needed to crossfoot the card for the first week.

Exhibit 7. Designation 74 Provides Christmas Assistance on Relief Day

FRANKLIN BH										XX-XXXX			XXXXXXXXXX			74-0		K017			P		22		26																								
Name of Assigned Carrier										Finance Number			EIN			Des/Act		Route No			FLSA		Year		PP																								
		Actual Weekly Hours		Days Assigned Carrier Absent						Daily Overtime		Training Hours		CDP Hours		Limited Duty Hours		Relief Hours		Second Trip		Route Dev.		GT Veh		Miles Omit		Xmas Assist Work Hours																					
		3652		K																								0700																					
1		Hours 100s								Hours 100s		Hours 100s				Hours 100s										Hours 100s																							
2		3392		K						Hours 100s		Hours 100s				Hours 100s										Hours 100s																							
										Week 1 Information										Week 2 Information																													
Des/Act		Name of Relief Carrier				EIN				Actual Weekly Hours		Tr		No EM		EM		Second Trip		Whole Miles Dev + Omit -		Actual Weekly Hours		Tr		No EM		EM		Second Trip		Whole Miles Dev + Omit -																	
76-0		KING RL				XXXXXXXXXX				0915		1						Min				0933		1						Min																			
										Hours 100s												Hours 100s								Min																			
										Hours 100s												Hours 100s								Min																			
										Hours 100s												Hours 100s								Min																			
										Hours 100s												Hours 100s								Min																			
This certifies that the above carrier rendered service in compliance with Postal Service regulations										Postmaster's Signature <i>Bob C. Anderson</i>										Date 12/16/2022										Carriers Initials BF										8127 Time (Min)									

PS Form 1314, August 2009 (Page 1 of 2) PSN 7530-01-1-014-6844

United States Postal Service **Regular Rural Carrier Time Certificate**

1. The RCA is assigned to a vacant regular K route with a relief day of Monday.
2. On the first Monday, the Des 74 carrier provides Christmas assistance for 7 hours. The replacement carrier works the route the entire day.
3. Enter K for the first Monday.
4. Enter 0700 hours in the Xmas Assist Work Hours block. Do **NOT** include these hours in the Actual Weekly Hours block.
5. The carrier will be paid 3.52 hours overtime ($36.52 + 7.00 = 43.52$).
6. Enter appropriate information for the relief carrier in the bottom section of the time certificate.

Exhibit 8. Replacement Carrier Provides Christmas Assistance on a Regular Route

TICHY PL										XX-XXXX					XXXXXXXXXX					78-0		K001		P	22		26		
Name of Assigned Carrier										Finance Number					EIN					Des/Act		Route No.		FLSA	Year		PP		
WK	Actual Weekly Hours	Equipment Allowance				N - No Service						Training Hours	Second Trip	Leave - Whole Hours							Work Days	Xmas Assist Work Hours							
		Hours	Tr	Miles	GT	Sat	Mon	Tue	Wed	Thur	Fri			Annual	Sick	Other	CCP	Donate	MILV	CourtLv									
1	Hours 100s	06	2	080								Hours 100s	Min													1000			
2	Hours 100s	03	1	040								Hours 100s	Min													0450			
										Week 1 Information										Week 2 Information									
Des/Act	Name of Relief Carrier	EIN	Actual Weekly Hours	Equipment Allowance				Second Trip	Actual Weekly Hours	Equipment Allowance				Second Trip															
				Hours	Tr	Miles	GT			Hours	Tr	Miles	GT																
			Hours 100s					Min	Hours 100s					Min															
			Hours 100s					Min	Hours 100s					Min															
			Hours 100s					Min	Hours 100s					Min															
			Hours 100s					Min	Hours 100s					Min															
This certifies that the above carrier rendered service in compliance with Postal Service regulations										Postmaster's Signature <i>Bob C. Anderson</i>										Date 12/16/2022		Carrier's Initials PT							

PS Form 1314-A, August 2009 PSN 7530-01-00-9282 (Page 1 of 2)

United States Postal Service Auxiliary Rural Carrier Time Certificate

1. A regular carrier on Route K001 carries his or her route on regularly scheduled day.
2. A replacement carrier provides Christmas assistance on Route K001 for 3.25 hours on Tuesday, Week 1; 6.75 hours on Friday, Week 1; and 4.50 hours on Saturday, Week 2.
3. On each of these days, the replacement carrier spends 3 hours on the street and travels 40 miles each day (in his or her own vehicle).
4. Prepare PS Form 1314-A using the actual route number (K001) on which service was performed.
5. Enter 1000 hours in the Xmas Assist Work Hours block for Week 1 and 0450 hours for Week 2. Do **NOT** include these hours in the Actual Weekly Hours block.
6. Enter EMA data in the appropriate Equipment Allowance blocks.
7. Do not enter any information on the bottom (relief carrier) section of the card.
8. If the replacement carrier provides Christmas assistance on more than one regular route, complete a separate PS Form 1314-A for each route on which Christmas assistance is provided.

Exhibit 9. Replacement Carrier Provides Christmas Assistance on an Auxiliary Route

DUNCAN CC										XX-XXXX					XXXXXXXX					78-0		A997		P	22	26
Name of Assigned Carrier										Finance Number					EIN					Des/Act		Route No.		FLSA	Year	PP
WK	Actual Weekly Hours	Equipment Allowance				N - No Service						Training Hours	Second Trip	Leave - Whole Hours							Work Days	Xmas Assist Work Hours				
		Hours	Tr	Miles	GT	Sat	Mon	Tue	Wed	Thur	Fri			Annual	Sick	Other	CDP	Donate	MILV	CourtLv						
1	Hours 100s																									0425 Hours 100s
2	Hours 100s	01	1	010																					0250 Hours 100s	
										Week 1 Information					Week 2 Information											
Des/Act	Name of Relief Carrier	EIN	Actual Weekly Hours	Equipment Allowance				Second Trip	Actual Weekly Hours	Equipment Allowance				Second Trip												
				Hours	Tr	Miles	GT			Hours	Tr	Miles	GT													
			Hours 100s					Min	Hours 100s					Min												
			Hours 100s					Min	Hours 100s					Min												
			Hours 100s					Min	Hours 100s					Min												
			Hours 100s					Min	Hours 100s					Min												
This certifies that the above carrier rendered service in compliance with Postal Service regulations			Postmaster's Signature <i>Bob C. Anderson</i>										Date 12/16/2022		Carrier's Initials CD											

PS Form 1314-A, August 2009 PSN 7530-01-00-9282 (Page 1 of 2)

United States Postal Service **Auxiliary Rural Carrier Time Certificate**

1. A replacement carrier provides 3.00 hours of Christmas assistance on Route A003 on Monday, Week 1; 1.25 hours of Christmas assistance on Route A009 on Wednesday, Week 1; and 2.50 hours of Christmas assistance on Route A003 on Saturday, Week 2. All hours are worked in the office, except for one hour on the street on Saturday, Week 2 (10 miles).
2. Prepare one PS Form 1314-A using route number A997 for all Christmas assistance hours on auxiliary routes.
3. Enter hours worked in the Xmas Assist Work Hours block. Do **NOT** include these hours in the Actual Weekly Hours block.
4. Enter EMA data in the appropriate Equipment Allowance blocks.

Exhibit 10. Nonrural Employee Provides Christmas Assistance on Rural Route (EMA Only)

ROGERS BA										XX-XXXX					XXXXXXXXXX					99-0		J029		P	22		26		
Name of Assigned Carrier										Finance Number					EIN					Des/Act		Route No.		FLSA	Year		PP		
WK	Actual Weekly Hours	Equipment Allowance				N - No Service					Training Hours	Second Trip	Leave - Whole Hours					W/ork Days	Xmas Assist Work Hours										
		Hours	Tr	Miles	GT	Sat	Mon	Tue	Wed	Thur			Fri	Annual	Sick	Other	COP			Donate	MILV	Court Lv							
1	Hours 100s	04	2	036								Hours 100s	Min											Hours 100s					
2	Hours 100s	06	3	054								Hours 100s	Min											Hours 100s					
										Week 1 Information										Week 2 Information									
Des/Act	Name of Relief Carrier	EIN	Actual Weekly Hours	Equipment Allowance				Second Trip	Actual Weekly Hours	Equipment Allowance				Second Trip															
				Hours	Tr	Miles	GT			Hours	Tr	Miles	GT																
			Hours 100s					Min	Hours 100s					Min															
			Hours 100s					Min	Hours 100s					Min															
			Hours 100s					Min	Hours 100s					Min															
			Hours 100s					Min	Hours 100s					Min															
This certifies that the above carrier rendered service in compliance with Postal Service regulations			Postmaster's Signature <i>Bob C. Anderson</i>										Date 12/16/2022		Carrier's Initials BR														

1. A clerk works as a Christmas auxiliary assistant on Route J029 and provides his or her own vehicle.
2. Complete PS Form 1314-A using Des 99-0 and the route number of the regular route. (Use A997 if assistance is provided on an auxiliary route.)
3. Enter the hours, trips, and miles in the Equipment Allowance blocks.
4. Do **NOT** enter any Actual Weekly Hours or Xmas Assist Work Hours. Work hours for nonrural employees are paid using their regular timekeeping system (e.g., manual timecards, TACS).
5. If Christmas assistance is provided on more than one regular route, complete a separate PS Form 1314-A for each employee and for each route on which they provide Christmas assistance.
6. If Christmas assistance is provided on more than one auxiliary route, combine the EMA data and enter the totals on one PS Form 1314-A using route number A997.

Exhibit 11. Designation 79 Provides Christmas Assistance on Assigned Auxiliary Route

BROWN GE					XX-XXXX					XXXXXXXX					79-0		A005		P		22		26	
Name of Assigned Carrier					Finance Number					EIN					Des/Act		Route No.		FLSA		Year		PP	
wK	Actual Weekly Hours	Equipment Allowance				N - No Service						Training Hours	Second Trip	Leave - Whole Hours							Work Days	Xmas Assist Work Hours		
		Hours	Tr	Miles	GT	Sat	Mon	Tue	Wed	Thur	Fri			Annual	Sick	Other	COP	Donate	Mil LV	Court Lv				
1	2450 Hours 100s	08	6	120																				
2	1298 Hours 100s	06	4	080		N	N																	
												Week 1 Information					Week 2 Information							
Des/Act	Name of Relief Carrier	EIN	Actual Weekly Hours	Equipment Allowance				Second Trip	Actual Weekly Hours	Equipment Allowance				Second Trip										
				Hours	Tr	Miles	GT			Hours	Tr	Miles	GT											
76-0	MULLINS SW	XXXXXXXX							0950 Hours 100s	03	2	040												
This certifies that the above carrier rendered service in compliance with Postal Service regulations					Postmaster's Signature <i>Bob C. Anderson</i>					Date 12/16/2022					Carrier's Initials GB									

PS Form 1314-A, August 2009 PSN 7530-01-00-9282 (Page 1 of 2) United States Postal Service **Auxiliary Rural Carrier Time Certificate**

1. A Des 79 assigned to route A005 served a regular route on Saturday, Week 2, while another replacement carrier worked on Saturday. Enter an N in the No Service block.
2. The Des 79 provided 1.5 hours of Christmas Assistance on route A005 on Saturday, Week 2.
3. The Des 79 took 4 hours of annual leave on Monday, Week 2.
4. Enter hours worked (0150) in the Xmas Assist Work Hours block. Do **NOT** include these hours in the Actual Weekly Hours block.
5. Enter the replacement carrier that served route A005 on Saturday and Monday on the bottom of PS Form 1314-A.

Exhibit 12. RCA provides Auxiliary Assistance and Christmas Assistance on an Auxiliary Route.

OBRIEN RP					XX-XXXX					XXXXXXXX					78-0		A997		P	22	26				
Name of Assigned Carrier					Finance Number					EIN					Des/Act		Route No.		FLSA	Year	PP				
Actual		Equipment Allowance				N - No Service					Training		Second		Leave - Whole Hours					Work		Xmas Assist			
Weekly Hours		Hours	Tr	Miles	GT	Sat	Mon	Tue	Wed	Thur	Fri	Hours	Trip	Annual	Sick	Other	COP	Donate	MILLV	Court Lv	Days	Work Hours			
0300																						0200			
Hours 100s												Hours 100s	Min									Hours 100s			
Hours 100s												Hours 100s	Min									Hours 100s			
												Week 1 Information					Week 2 Information								
Name of Relief Carrier					EIN					Actual		Equipment Allowance				Second		Actual		Equipment Allowance				Second	
										Weekly Hours		Hours	Tr	Miles	GT	Trip	Weekly Hours	Hours	Tr	Miles	GT	Trip			
										Hours 100s						Min	Hours 100s					Min			
										Hours 100s						Min	Hours 100s					Min			
										Hours 100s						Min	Hours 100s					Min			
										Hours 100s						Min	Hours 100s					Min			
										Hours 100s						Min	Hours 100s					Min			
ies that the above carrier rendered service										Postmaster's Signature										Date		Carrier's Initials			
ance with Postal Service regulations										<i>Bob C. Anderson</i>										12/16/2022		RO			

1314-A, August 2009 PSN 7530-01-00-9282 (Page 1 of 2)

United States Postal Service Auxiliary Rural Carrier Time Certificate

1. A replacement carrier provides 3.00 hours of Auxiliary assistance on Route A003 on Monday, Week 1, and 2.00 hours of Christmas assistance on Route A009 on Wednesday, Week 1. All hours are worked in the office.
2. Prepare one PS Form 1314-A using route number A997 for all Auxiliary and Christmas assistance hours on auxiliary routes.
3. Enter hours worked (3.00) as Auxiliary assistance in the Actual Weekly Hours block.
4. Enter hours worked (2.00) as Christmas assistance in the Xmas Assist Work Hours block. Do **NOT** include in the Actual Weekly Hours block.
5. This timecard would result in 05.00 hours of pay.

— Payroll, Controller, 10-20-22

Information Security

Career Change? Explore the Field of Cybersecurity

Every year, thousands of innovative and rewarding positions in cybersecurity are created. The Department of Labor predicts that information technology and cybersecurity will be among the fastest growing and best paying jobs over the next decade.

Do you think you have the skills for a career in cybersecurity? Luckily, cybersecurity is an all-encompassing field composed of individuals from diverse backgrounds and skillsets. In fact, it is likely you already possess several skills desired for many cybersecurity positions, such as problem-solving, communication, and project management.

As one of the largest organizations in the nation, the Postal Service™ must stay at the forefront of cybersecurity to detect and deter the thousands of security risks the organization faces daily.

During Cybersecurity Awareness Month, CyberSafe at USPS® will highlight various Corporate Information Security Office portfolios and briefly describe their roles in securing the USPS® network.

If you are interested in a promising career in cybersecurity, you can check out current USPS job openings on *Blue* under the eCareer tab at blue.usps.gov/wps/myportal/ecareer.

Remember to watch for Cybersecurity Awareness Month and Cybersecurity Career Awareness Week content this October.

— Corporate Information Security Office,
Chief Information Security Officer, 10-20-22

Safety and Health

Be Ready for an Emergency

Natural disasters are inevitable and experienced globally. They can occur at any moment, at any place, and at any time. They can injure people, damage property, and sometimes, take lives. Prepared individuals are known to be the most resilient in the face of a natural disaster.

While some disasters, such as hurricanes, have early warning information, other disasters, such as earthquakes, are more unpredictable and unavoidable. We must do our part to foster a culture of preparedness for ourselves, our families, our workplaces, and the community.

How can we foster a culture of preparedness?

- Create a plan.
- Understand the types of emergencies likely to occur in your geographic area.
- Participate in awareness drills, if possible.
- Stock up on emergency supplies.
- Heed early warning information.
- Ensure personal documents such as passports, identification cards, and birth certificates are kept in a sealed, secure, and waterproof container.

- Familiarize yourself with your surroundings and know where to find the nearest evacuation routes, emergency exits, and emergency shelters.
- Develop contingencies for charging mobile devices, fueling vehicles, and accessing emergency funds in the event of a widespread power outage.
- Practice continuous risk assessment.
- Make preparedness a priority.

These and other precautionary measures can form the framework of your preparedness plan and help you and your loved ones to be ready for an emergency.

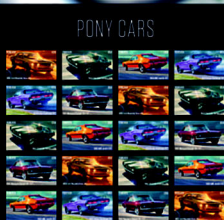
Use the following resources to help develop or augment your plans:

- USPS® National Preparedness page at blue.usps.gov/nationalpreparedness.
- Department of Homeland Security at ready.gov.
- Centers for Disease Control and Prevention at cdc.gov/disasters/index.html.

Why is it essential that USPS cultivates and fosters a culture of preparedness? Because it makes all of us less vulnerable when disaster strikes.

— National Preparedness,
Corporate Affairs, 10-20-22

Enjoy the Thrill of Iconic **Pony Cars** Forever® Stamps



ON SALE NATIONWIDE: AUGUST 25, 2022
Sold as a full pane.

Stamp Services

Pictorial Postmarks Announcement

As a community service, the Postal Service™ offers pictorial postmarks to commemorate local events celebrated in communities throughout the nation. A list of events for which pictorial postmarks are authorized appears on the following pages. The sponsor of the pictorial postmark appears in italics under the date. Also provided are illustrations of these postmarks.

People attending these local events may obtain the postmark in person at the temporary Post Office™ station established there. Those who cannot attend the event but who wish to obtain the postmark may submit a mail order request. Pictorial postmarks are available only for the dates indicated, and *requests must be postmarked no later than 30 days following the requested pictorial postmark date.*

All requests must include a stamped envelope or postcard bearing at least the minimum First-Class Mail® postage. Items submitted for postmark may not include

postage issued after the date of the requested postmark. Such items will be returned unserved.

Customers wishing to obtain a postmark must affix stamps to any envelope or postcard of their choice, address the envelope or postcard to themselves or others, insert a card of postcard thickness in envelopes for sturdiness, and tuck in the flap. Place the envelope or postcard in a larger envelope and address it to: Pictorial Postmarks, followed by the Name of the Station, Address, City, State, ZIP+4® Code, as listed next to the postmark.

Customers can also send stamped envelopes and postcards without addresses for postmark, as long as they supply a larger envelope with adequate postage and their return address. After applying the pictorial postmark, the Postal Service returns the items (with or without addresses) under addressed protective cover.



October 21, 2022

Philatelic Society of Puerto Rico

70 PURIPEX Anniversary
Station
Customer Relations
Specialist
585 Avenue FD Roosevelt,
Suite 223
San Juan, PR 00936-9681



October 22, 2022

@boba.postcards SFPC Meetup

@boba.postcards SFPC
Meetup 3rd Anniversary
Station
Postmaster
PO Box 880066
San Francisco, CA 94188-0066



October 21–22, 2022

*Poston Pilgrimage
Preservation Organization
Stamp Our Story
Committee*

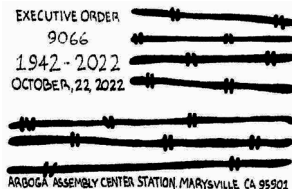
Poston Station
Postmaster
1500 South California
Avenue
Parker, AZ 85344-9998



October 22, 2022

United States Postal Service

Thida Centennial
Celebration Station
Postmaster
200 Southwest Third Street
Bradford, AR 72020-9998



October 22, 2022

*Marysville Chapter of the
Japanese American Citizens
League*

Arboga Assembly Center
Station
Postmaster
407 C Street
Marysville, CA 95901-9998



October 28, 2022

*Gobierno Municipal de
Cumuy*

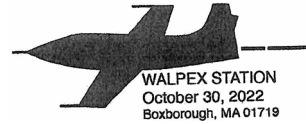
Gobierno Municipal de
Cumuy Station
Customer Relations
Specialist
585 Avenue FD Roosevelt,
Suite 223
San Juan, PR 00936-9998



FALL KAZOOPEX 2022
19TH AMENDMENT ANNIVERSARY
STATION
OCTOBER 29, 2022
COMSTOCK MI 49041

October 29, 2022

United States Postal Service
19th Amendment
Anniversary Station
Postmaster
PO Box 9998
Comstock, MI 49041-9998



WALPEX STATION
October 30, 2022
Boxborough, MA 01719

October 30, 2022

Waltham Stamp Club
WALPEX Station
Postmaster
15 Common Street
Natick, MA 01760-9998



October 29-30, 2022

Cuy-Lor Stamp Club
Cuy-LorPex Station
Customer Relations
Coordinator
2200 Orange Avenue, #234
Cleveland, OH 44101-9998

— Stamp Services,
Marketing, 10-20-22

How to Order the First-Day-of-Issue Digital Color or Traditional Postmarks

Customers have 120 days to obtain the first-day-of-issue postmarks by mail. Each cover must have sufficient postage to meet First-Class Mail® requirements. Customers may purchase new stamps at their local Post Office™, by phone at 844-737-7826, or on The Postal Store® website at usps.com/shop.

Digital Color Postmarks

Only select stamp issues offer a digital color postmark. Customers may submit #6 or #10 envelopes constructed of paper rated as “laser safe.” The Postal Service™ recommends envelopes of 80-pound Accent Opaque, acid-free, 9/16-inch side seams with no glue on the flap. The maximum size of all digital color postmarks is 2 inches (vertically) by 4 inches (horizontally). Allow sufficient space on the envelope to accommodate the postmark. Do not use self-adhesive labels for addresses on the envelope. Two test envelopes must be included. There is a minimum of 10 envelopes at 50 cents per postmark required at the time of servicing. Customers must submit a check, money order, or credit card for payment.

The Postal Service reserves the right to not accept hand-painted and other cachet envelopes that are not compatible with our digital color postmark equipment. The Postal Service also reserves the right to substitute traditional black rubber postmarks if use of nonspecified envelopes results in poor image quality or damage to equipment.

Customers must affix the stamps to the envelopes and address them to themselves or others for return through the mail. Or, they may include an additional self-addressed return envelope, large enough to accommodate their canceled items, with sufficient postage affixed for return of

their postmarked items. Address customer requests for digital color postmarks to:

FDOI – (Name of Stamp Issue)
USPS Stamp Fulfillment Services
8300 NE Underground Drive, Suite 300
Kansas City, MO 64144-9900

After applying the first-day-of-issue postmark, the Postal Service will return the envelopes to the customer by U.S. Mail®.

Traditional Postmarks

Customers must affix the stamps to the envelopes and address them to themselves or others for return through the mail. Or, they may include an additional self-addressed return envelope, large enough to accommodate their canceled items, with sufficient postage affixed for return of their postmarked items. Address customer requests for traditional postmarks to:

FDOI – (Name of Stamp Issue)
USPS Stamp Fulfillment Services
8300 NE Underground Drive, Suite 300
Kansas City, MO 64144-9900

After applying the first-day-of-issue postmark, the Postal Service will return the envelopes to the customer by U.S. Mail. There is no charge for the first 50 postmarks. There is a 5-cent charge for each additional postmark over 50. Customers must submit a check, money order, or credit card for payment.

Locally produced items are not authorized. Only merchandise that has been approved and assigned an item number by Headquarters Retail Marketing may be produced and sold.

FIRST DAY OF ISSUE

**NANCY
REAGAN**

JULY 6, 2022 — SIMI VALLEY, CA 93065

Digital Color Pictorial

FDOI – Nancy Reagan Stamp

USPS Stamp Fulfillment Services
8300 NE Underground Drive, Suite 300
Kansas City, MO 64144-9900

November 6, 2022

FIRST DAY OF ISSUE

**NANCY
REAGAN**

JULY 6, 2022 • SIMI VALLEY, CA 93065

Black and White Pictorial

FDOI – Nancy Reagan Stamp

USPS Stamp Fulfillment Services
8300 NE Underground Drive, Suite 300
Kansas City, MO 64144-9900

November 6, 2022



Digital Color Pictorial

FDOI – Mariachi Stamps

USPS Stamp Fulfillment Services
8300 NE Underground Drive, Suite 300
Kansas City, MO 64144-9900

November 15, 2022



Black and White Pictorial

FDOI – Mariachi Stamps

USPS Stamp Fulfillment Services
8300 NE Underground Drive, Suite 300
Kansas City, MO 64144-9900

November 15, 2022



Digital Color Pictorial

FDOI – Pete Seeger Stamp

USPS Stamp Fulfillment Services
8300 NE Underground Drive, Suite 300
Kansas City, MO 64144-9900

November 21, 2022



Black and White Pictorial

FDOI – Pete Seeger Stamp

USPS Stamp Fulfillment Services
8300 NE Underground Drive, Suite 300
Kansas City, MO 64144-9900

November 21, 2022



Digital Color Pictorial

FDOI – Go Beyond Stamps

USPS Stamp Fulfillment Services
8300 NE Underground Drive, Suite 300
Kansas City, MO 64144-9900

December 3, 2022



Black and White Pictorial

FDOI – Go Beyond Stamps

USPS Stamp Fulfillment Services
8300 NE Underground Drive, Suite 300
Kansas City, MO 64144-9900

December 3, 2022



Digital Color Pictorial

FDOI – National Marine Sanctuaries Stamps

USPS Stamp Fulfillment Services
8300 NE Underground Drive, Suite 300
Kansas City, MO 64144-9900

December 5, 2022



Black and White Pictorial

FDOI – National Marine Sanctuaries Stamps

USPS Stamp Fulfillment Services
8300 NE Underground Drive, Suite 300
Kansas City, MO 64144-9900

December 5, 2022

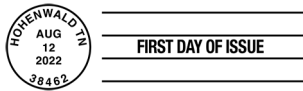


Digital Color Pictorial

FDOI – Elephants Stamp

USPS Stamp Fulfillment Services
8300 NE Underground Drive, Suite 300
Kansas City, MO 64144-9900

December 12, 2022



Black and White Pictorial

FDOI – Elephants Stamp

USPS Stamp Fulfillment Services
8300 NE Underground Drive, Suite 300
Kansas City, MO 64144-9900

December 12, 2022



Digital Color Pictorial

FDOI – Pony Cars Stamps

USPS Stamp Fulfillment Services
8300 NE Underground Drive, Suite 300
Kansas City, MO 64144-9900

December 25, 2022



Black and White Pictorial

FDOI – Pony Cars Stamps

USPS Stamp Fulfillment Services
8300 NE Underground Drive, Suite 300
Kansas City, MO 64144-9900

December 25, 2022



Digital Color Pictorial

FDOI – James Webb Space Telescope Stamp

USPS Stamp Fulfillment Services
8300 NE Underground Drive, Suite 300
Kansas City, MO 64144-9900

January 8, 2023

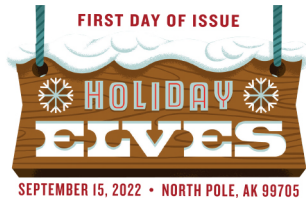


Black and White Pictorial

FDOI – James Webb Space Telescope Stamp

USPS Stamp Fulfillment Services
8300 NE Underground Drive, Suite 300
Kansas City, MO 64144-9900

January 8, 2023



Digital Color Pictorial

FDOI – Holiday Elves Stamps

USPS Stamp Fulfillment Services
8300 NE Underground Drive, Suite 300
Kansas City, MO 64144-9900

January 15, 2023



Black and White Pictorial

FDOI – Holiday Elves Stamps

USPS Stamp Fulfillment Services
8300 NE Underground Drive, Suite 300
Kansas City, MO 64144-9900

January 15, 2023

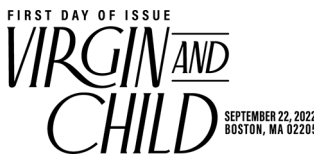


Digital Color Pictorial

FDOI – Virgin and Child Stamp

USPS Stamp Fulfillment Services
8300 NE Underground Drive, Suite 300
Kansas City, MO 64144-9900

January 22, 2023



Black and White Pictorial

FDOI – Virgin and Child Stamp

USPS Stamp Fulfillment Services
8300 NE Underground Drive, Suite 300
Kansas City, MO 64144-9900

January 22, 2023

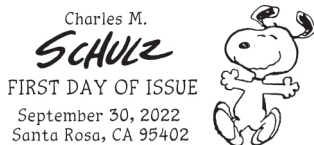


Digital Color Pictorial

FDOI – Charles M. Schulz Stamps

USPS Stamp Fulfillment Services
8300 NE Underground Drive, Suite 300
Kansas City, MO 64144-9900

January 30, 2023



Black and White Pictorial

FDOI – Charles M. Schulz Stamps

USPS Stamp Fulfillment Services
8300 NE Underground Drive, Suite 300
Kansas City, MO 64144-9900

January 30, 2023



Digital Color Pictorial

FDOI – Snowy Beauty Stamps

USPS Stamp Fulfillment Services
8300 NE Underground Drive, Suite 300
Kansas City, MO 64144-9900

February 11, 2023



FIRST DAY OF ISSUE

FDOI – Snowy Beauty Stamps

USPS Stamp Fulfillment Services
8300 NE Underground Drive, Suite 300
Kansas City, MO 64144-9900

February 11, 2023

Black and White Pictorial



FDOI – Kwanzaa 2022 Stamp

USPS Stamp Fulfillment Services
8300 NE Underground Drive, Suite 300
Kansas City, MO 64144-9900

February 13, 2023

Digital Color Pictorial



FDOI – Kwanzaa 2022 Stamp

USPS Stamp Fulfillment Services
8300 NE Underground Drive, Suite 300
Kansas City, MO 64144-9900

February 13, 2023

Black and White Pictorial

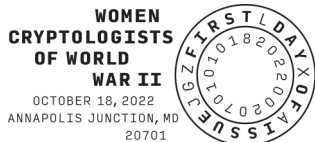


FDOI – Women Cryptologists of World War II Stamp

USPS Stamp Fulfillment Services
8300 NE Underground Drive, Suite 300
Kansas City, MO 64144-9900

February 18, 2023

Digital Color Pictorial



FDOI – Women Cryptologists of World War II Stamp

USPS Stamp Fulfillment Services
8300 NE Underground Drive, Suite 300
Kansas City, MO 64144-9900

February 18, 2023

Black and White Pictorial



FDOI – Hanukkah 2022 Stamp

USPS Stamp Fulfillment Services
8300 NE Underground Drive, Suite 300
Kansas City, MO 64144-9900

February 20, 2023

Digital Color Pictorial



FDOI – Hanukkah 2022 Stamp

USPS Stamp Fulfillment Services
8300 NE Underground Drive, Suite 300
Kansas City, MO 64144-9900

February 20, 2023

Black and White Pictorial



475 L'ENFANT PLAZA SW
WASHINGTON DC 20260-5540

First-Class Mail
Postage & Fees Paid
USPS
Permit No. G-10



Bring Smiles to the Holidays with ***Holiday Elves*** Forever® Stamps



ON SALE NATIONWIDE: **SEPTEMBER 15, 2022**

