

Postal Bulletin

Published Since March 4, 1880

March 6, 2025

PB 22671



‘Delivering to You, With Safety in View’

USPS 2025 Safe
Driving Campaign

See page 3

Contents

COVER STORY

2025 USPS Motor Vehicle Safe Driving Campaign

USPS Motor Vehicle Awareness – Delivering to You,
With Safety in View (#USPSVehicleAwareness) 3

POLICIES, PROCEDURES, AND FORMS UPDATES

Manuals

DMM Revision: Shipping Mailable Hazardous Materials
in USPS-Produced Packaging 11
IMM Revision: Individual Country Listing for Malta 11
IMM Revision: Individual Country Listing for Montenegro 12
IMM Revision: St. Pierre and Miquelon 12
International Mail: International Competitive Services
Product and Price Changes 35

ORGANIZATION INFORMATION

Address Management

Post Office Changes 37

Environmental Management

Waste Management: Aerosol Can Disposal 37

Information Security

Back Up Your Data Daily and on World Backup Day 38

Stamp Services

Stamp Announcement 25-12: Battlefields of the American
Revolution Stamps 39
Pictorial Postmarks Announcement 41
How to Order the First-Day-of-Issue Digital Color or
Traditional Postmarks 44

PULL-OUT INFORMATION

Fraud

Missing, Lost, or Stolen U.S. Money Order Forms 15
Missing, Lost, or Stolen Canadian Money Order Forms 23
Verifying U.S. Postal Service Money Orders 25
Counterfeit Canadian Money Order Forms 25
Toll-Free Number Available to Verify Canadian
Money Orders 25

Other Information

Overseas Military/Diplomatic Mail 27
Freely Associated States Restrictions 34

POSTAL BULLETIN 2024 ANNUAL INDEX

2024 Annual Index PB 22667 (1-9-25)

Find the latest in mail and delivery information
and services offered by U.S. Postal®
in the *Postal Bulletin* at
about.usps.com/postal-bulletin

Mail Moment®

The U.S. Postal Service Is Everywhere
So You Can Be Anywhere®

Cover Story

2025 USPS Motor Vehicle Safe Driving Campaign

USPS Motor Vehicle Awareness – Delivering to You, With Safety in View (#USPSVehicleAwareness)

With more than 246,000 vehicles driving over a billion miles a year while delivering mail to over 168 million delivery locations throughout the country, the Postal Service™ has one of the largest fleets in the nation.

The fleet is comprised of the following:

- Tractor trailers,
- Cargo vans,
- Next Generation Delivery Vehicles (NGDV), and
- Various other kinds of delivery trucks—including electric vehicles.

Postal Service employees are hard at work on the streets you drive, and we need your help to raise awareness about safe motor vehicle driving. Please be careful when you encounter a postal vehicle on the road; drive around them to help prevent mishaps. Together, we can ensure that everyone is safe while we Deliver for America.

Information for All USPS Drivers

Driving Safety Tips for Employees – Preventing Vehicle Incidents on the Job

Drivers are responsible for the safe operation of any vehicle they drive during the performance of their duties.

Protect yourself by following these tips:

1. Only authorized and trained personnel may operate postal vehicles.
2. You must have in your possession a valid state driver's license when operating a postal vehicle or any vehicle when on Postal Service business.
3. Obey all state and local traffic laws, and Postal Service regulations when driving any postal vehicle.
4. Defensive driving is the best way to prevent vehicle accidents because it involves both the desire and the ability of a driver to control accident-provoking situations. You are expected to drive all postal vehicles in a dependable, efficient, safe, and courteous manner.

Remember these things:

1. Inspect your assigned vehicle daily (or whenever changing to a different vehicle) and focus on vehicle familiarization before leaving the parking lot or garage. Inspect all trailers for damage, inappropriate placards, or unsafe items.

2. Report all mechanical defects, failures, and vehicle damage to your supervisor.
3. Make sure that any mail you load into a vehicle will pose no hazard to the operator when the vehicle is started, stopped, turned on, or otherwise operated on a mail delivery route. Do not place mail on the tray or ledge to the extent that it can obscure your vision or break the windshield during a sudden stop.

Be aware of your surroundings to drive safely:

1. Stay alert at all times:
 - a. Never finger mail or hold it in your hands while you drive.
 - b. Don't use devices that diminish the awareness of your surroundings and cause distractions while operating a motor vehicle.
 - c. Move your vehicle only when you are absolutely certain that it is safe to do so, especially if children may be nearby. Get out, circle your vehicle, and check underneath it to be sure.
 - d. Adjust for various weather or road conditions and remember that the situation can change rapidly due to sudden weather changes or road features.
 - e. Scan the roadway. Key your eyes moving and view the road as a whole. Look ahead and expect the unexpected.
 - f. Always drive at a safe speed. Never exceed the speed limit.
 - g. Always maintain a safe stopping distance.
2. When you leave the vehicle:
 - a. Properly secure your vehicle when leaving the controls.
 - b. Apply the foot brake and place automatic transmissions in the park position. Place manual transmissions in gear. For PVS vehicles of 7 tons or more, place the transmission in neutral.
 - c. Turn the vehicle's front wheels toward the curb if you are on a flat surface or the vehicle is facing downhill. If the vehicle is parked facing uphill, turn the front wheels away from the curb.
 - d. Set the hand-parking/emergency brake. For PVS vehicles of 7 tons or more, the parking air brakes must be applied.

- e. Turn off the engine and remove the key.
- f. Lock any sliding door(s) between the truck body and cab.
- g. Lock the doors if you will be out of direct sight of the vehicle.

Information for Postal Service Managers

Observation of Driving Practices

To enforce a high standard of professional driving performance, you must complete PS Form 4584, *Observation of Driving Practices*, or PS Form 4584T, *Observation of Driving Practices (Trucks)*, for each driver under your supervision at regular intervals.

You must familiarize yourself with defensive driving techniques so that you know what the common driving errors are, how they can be detected, and how they can be prevented.

Management is responsible for ensuring that drivers not only follow all motor vehicle safety guidelines but are also recognized for their commitment to safe driving and overall performance. This includes but is not limited to the following:

- Postal Service drivers must wear seat belts when their vehicles are in motion.
- Driver must conduct pre-trip vehicle inspections using Notice 76, *Expanded Vehicle Safety Check*, or Notice 76-T, *Safety Checklist for Tractor Trailer Operators (TTOs) and Motor Vehicle Service Operators (MVOs)*. Use PS Form 4565, *Vehicle Repair Tag*, to report all mechanical defects, failures, and vehicle damage.
- Promote awareness of potential road hazards, such as construction zones, debris, wildlife, blind corners, sharp turns, and narrow or crowded streets.
- Promote awareness of potential route hazards, such as low bridges and overpasses, railroad crossings, tight parking spaces, and loading docks.
- Postal Service drivers must always be mindful of pedestrians, cyclists, and motorcyclists.
- Provide regular weather updates to drivers and remind drivers to adjust driving speeds and techniques based on road conditions, including rain, snow, or fog.
- Recognize drivers for safe driving and overall performance.

General Letters to Customers

Help us Keep our Community Roads Safe

Dear Postal Customer:

We are proud to serve our community every day ensuring timely and efficient delivery of letters and packages that make a difference. We are committed to ensuring that safety comes first for you and our employees as we share our roads.

Postal Service employees are hard at work on the streets that you drive, and we need your cooperation to raise awareness about safe motor vehicle driving. Our delivery vehicles frequently make stops at multiple locations. When you see a postal vehicle on the road, please be cautious and give them space when driving around them to help prevent accidents. Take extra care and avoid any movements that might lead to a collision.

We look forward to continuing to serve our communities and appreciate your commitment to helping keep our roads safe. Together, we can ensure that everyone is safe while we deliver America's mail.

Thank you,

[Name]

Help Us Make Safe Deliveries

Dear Postal Customer:

As we continue providing essential services to your home and community, we want to remind you that safety on the roads is a shared responsibility. Our vehicles are in the neighborhood everyday making deliveries, and we need your help to ensure that both you and our employees stay safe.

What You Can Do

Protect yourself by doing the following:

- **Pay Attention to Our Vehicles:** If you see one of our trucks making a delivery near your home, slow down. Give our drivers enough space to park and maneuver safely.
- **Check for Blind Spots:** When backing out of your driveway or pulling into your street, look out for our vehicles. Double-check blind spots to ensure no one is in your path.
- **Avoid Distracted Driving:** Phones down, eyes on the road. Accidents happen fast, especially when distractions take your attention away from our trucks on narrow streets or driveways.

- **Don't Block Our Trucks:** If you see one of our trucks making a delivery in front of your home, please don't park too close or obstruct the driveway. This can cause dangerous situations when our drivers must navigate around parked cars in tight places.

Why This Matters

Too often, accidents happen simply because drivers are not paying attention or are in too much of a hurry. Our employees are on the street every day and we count on your awareness to help prevent collisions and keep everyone safe.

Let's be clear: Our vehicles are not hard to miss. Yet, accidents still happen because other drivers fail to slow down and give our trucks the space they need. Please do your part. These accidents are preventable, and together we can make our streets safer.

Thank you for helping us protect the Postal Service employees who work hard to deliver the services you need. Sincerely,

[Name]

Dear Postal Customer:

As part of your community, we take pride in services we provide, and safety is always our priority. Postal vehicles are on the roads everywhere frequently stopping to make deliveries in all locations.

We need your help to make sure everyone stays safe. Please be alert when driving our vehicles, whether they're parked or on the move. Your caution can make a big difference in preventing accidents and keeping our community safe.

We appreciate your support and look forward to continuing to serve you with safety at the forefront.

Sincerely,

[Name]



POSTAL NEWS

Letter to the Editor
Publication Name
Street Address
City, State, ZIP Code

Dear Editor,

I'm writing to request your support in sharing an important message about motor vehicle safety. With over 246,000 vehicles operating on America's roadways, the U.S. Postal Service has a vested interest in promoting safe driving efforts among all road users. With such a large presence on the road, we aim to raise awareness and promote safer interactions with our drivers and vehicles.

Every day, our vehicles are part of the flow of traffic, navigating on high-traffic urban areas and quieter residential neighborhoods, as well as more remote locations. Our fleet plays an essential role in keeping communities running smoothly by delivering letters and packages to people who rely on us. However, the increasing volume of traffic and varying road conditions make it more important than ever for all drivers to be mindful of their actions when sharing the road.

Our employees encounter hundreds of millions of drivers across the country each year and we are committed to ensuring that these interactions are as safe as possible. Road safety is a shared responsibility, and we want to encourage all road users to adopt best practices when driving near our vehicles whether they are large tractor trailers, or small delivery vehicles.

Awareness of issues such as blind spots, safe following distances and cautious driving around stopped or parked vehicles can make a significant difference in preventing accidents.

To address this, we are launching a motor vehicle safety awareness campaign designed to educate drivers about our fleet. The campaign highlights safe driving tips. Our goal is to reduce the number of collisions and promote safe driving for everyone. We emphasize the importance of mutual responsibility and attentiveness on the road, with a special focus on creating safer interactions between commercial and private vehicles.

The Postal Service is confident this campaign will resonate with your audience, because it highlights not only the safety of our drivers, but also the safety of everyone in the community – families, friends, and neighbors. We are confident that with your help, we can reach a wider audience and foster a culture of mutual respect and awareness on the roadways.

Thank you for considering this important message. Together, we can make a difference promoting safe driving and preventing accidents.

Sincerely,

[Name]

Postmaster

Safety Ambassador/Union Steward

[City]

Postmaster Outreach Speech to Students

Stay Back, Stay Safe! – A Message for Children

[Make the presentation light and fun. Even though this is a serious subject, children will respond to a friendly and approachable adult.]

Good morning boys and girls.

My name is **[Name]** and I'm your postmaster. **[Tell the children what a postmaster is/does.]**

I've got some awesome tips to share with you about how to stay safe when you see our mail carrier vehicles in your neighborhood. You've probably seen some of them driving around or parked near your home or school. These vehicles help deliver important letters and packages in our community, but guess what? We need your help to stay safe when we're in your area.

Our Super Safety Slogan: **"Stay Back, Stay Safe!"**

Remember this: **"Stay Back, Stay Safe!"** That's your secret code to staying safe whenever you see our delivery vehicles nearby. And I'm going to show you some fun and easy ways to do it!

#1. Give Us Space – Stay Back!

Our drivers can't always see you if you're too close. Our vehicles have big mirrors, but they also have what are called blind spots, which are places where the driver can't see you. So, what do you do? **"Stay Back, Stay Safe!"** If you're walking, riding your bike, or playing near one of our vehicles, make sure you stay far enough away so the driver can see you.

#2. Never Play Around Parked Vehicles.

When our delivery vehicles are parked, it can be tempting to play around them or hide behind them. But this is dangerous! It's important to **"Stay Back, Stay Safe!"** The driver may need to move the vehicle, and they may not know you're there. Always keep your distance and play in safe areas like the park or your backyard, far away from parked vehicles.

#3. Wait for the Truck to Go.

If a delivery vehicle is stopped and then starts moving again, it's really important to give it space and let it drive away first. Let's say it together: **"Stay Back, Stay Safe!"** Always wait until the vehicle has gone before crossing the street or going near where it was parked. This helps make sure you stay safe, and the driver has enough room to maneuver.

#4 Look for the Drivers Wave or Smile.

If you need to cross in front of one of our delivery vehicles, always make sure you see the driver and they can see you. A good way to know when they see you is if you wave at them, and they wave or smile back to you. Once you know they've seen you, it's safer to cross the road. But remember, you still need to **"Stay Back, Stay Safe!"** Always remember to stop, look both ways, and listen before crossing the street!

Remember our secret code: **"Stay Back, Stay Safe!"** You're part of our safety team now! Every time you see one of our delivery vehicles say the secret code to yourself, **"Stay Back, Stay Safe!"** By doing that you're helping keep everyone safe, including yourself.

Thank you for letting me speak to you today. Have a great and safe rest of the year!

Stay Safe on the Road: Be Aware of Mail Trucks and Keep Everyone Safe

As part of our commitment to safe driving, the Postal Service wants to remind everyone to stay alert and share the road in a safe manner. Our vehicle fleet is the only delivery service that reaches every address in the nation: over 168 million residences and businesses. We are part of the fabric of every community around the nation, helping to keep the mail moving and we need your help to keep everyone safe.

With more than 246,000 vehicles, one of the largest civilian fleets in the world, it's likely you'll see us on the road every day.

While the postal logo you recognize will remain the same, you may notice updated shapes and sizes of branding across our fleet. These changes reflect our commitment to innovation while maintaining the familiar identity you trust. The highlights of this update are our new zero-emission electric Next Generation Delivery Vehicle (NGDV), E-Transit, and other electric vehicles. We're excited to share the refreshed look for our vehicles.

Whether we're making deliveries, providing pickup services, or simply moving between locations, we're working hard to ensure a safe and efficient journey for everyone.

Postal Service employees travel more than 1.2 billion miles a year to deliver mail. Our drivers are trained to follow safety guidelines and drive responsibly; however, road safety is a two-way street, and we ask that you also stay vigilant and practice safe driving habits when you are near our vehicles.

Here are some safety tips for drivers to follow:

- **Give Us Space:** Whether it's a large truck or a smaller delivery vehicle, always leave plenty of room. Keeping a safe following distance gives you enough time to react to any changing traffic conditions, especially when passing or merging.
- **Recognize Different Vehicle Sizes:** The Postal Service has a variety of vehicles used to transport and deliver mail, each with unique driving characteristics. Larger trucks require more distance to safely stop and make wide turns, while smaller vehicles can make quicker stops and maneuver easily. Being aware of different behaviors can help you adjust your driving and avoid any sudden surprises on the road.
- **Watch for Stopped Vehicles:** Our vehicles need to make stops for deliveries. Always be cautious when approaching a stopped postal vehicle as there might be a driver loading or unloading, or the vehicle may need to re-enter traffic. Slow down and be prepared for sudden movement. If you're driving too close, you may not have enough time to safely stop.



- **Avoid Blind Spots:** Larger trucks have larger blind spots, especially on the rear and sides, while smaller vehicles also have areas that are hard for the driver to see. To stay visible, avoid lingering in these spots, particularly when passing or merging. If you can't see the driver's mirrors, they likely can't see you. Always make sure you're in a position where the driver can see you, and give extra space, when possible, to reduce the risk of accidents.
- **Stay Focused:** Distractions can lead to accidents. Staying focused and alert on the road helps protect everyone.
- **Use Extra Caution in Neighborhoods and Residential Areas:** Our vehicles operate in residential neighborhoods where children, pets, and pedestrians can be more frequent. Drive with extra care in these areas and be ready to slow down or stop for both our vehicles and other road users.

Keep an eye out for our newly modernized vehicles on the road. Though they may look a little different, we're still delivering the same reliable service you know and depend on. Our fleet is here to serve you, and by working together, we can make sure everyone gets where they need to go safely. Let's stay safe on the road.

Together, we can ensure safer roads for everyone. For more information about how we're promoting motor vehicle safety, go to usps.com.

— Occupational Safety and Health,
Human Resources, 3-6-25



Stay Back, Stay Safe!

Celebrate the radiant beauty of fall with
Autumn Colors Forever® Stamps



SOLD AS PANE OF 20 AUGUST 16, 2024

Policies, Procedures, and Forms Updates

Manuals

DMM Revision: Shipping Mailable Hazardous Materials in USPS-Produced Packaging

Effective April 7, 2025, the Postal Service™ will revise *Mailing Standards of the United States Postal Service*, Domestic Mail Manual (DMM®), section 601.6.1, to clarify requirements for using USPS-produced packaging for shipping mailable hazardous materials.

Currently, section 601.6.1, “USPS-Produced Packaging,” specifies that mailers must not use USPS-produced packaging for shipping mailable hazardous material or live animals. The Postal Service is revising section 601.6.1 to reflect that the Postal Service allows shipping mailable hazardous material in USPS Ground Advantage® and USPS Connect Local USPS-produced packaging.

Although the Postal Service will not publish these revisions in the DMM until April 7, 2025, the standards are effective immediately.

Mailing Standards of the United States Postal Service, Domestic Mail Manual (DMM)

* * * * *

600 Basic Standards for All Mailing Services

601 Mailability

* * * * *

6.0 Mailing Containers – Special Types of Envelopes and Packaging

6.1 USPS-Produced Packaging

[Revise the text of 6.1 to read as follows:]

Using USPS-produced packaging for mailing items must meet the following standards:

- a. All USPS-produced packaging (including Flat-Rate packaging) must be used only for the applicable product (e.g., Priority Mail Express, Priority Mail).
- b. The mailer of any matter mailed in USPS-produced packaging, regardless of how the packaging is reconfigured or how markings may be obliterated, must pay the appropriate product price.
- c. Except as provided under 6.1d, USPS-produced packaging must not be used for shipping mailable hazardous material or live animals.
- d. USPS Ground Advantage and USPS Connect Local USPS-produced packaging may be used for shipping mailable hazardous material.

* * * * *

The Postal Service will incorporate these revisions into the next edition of the online DMM, which is available via Postal Explorer® at pe.usps.com.

— *Product Classification, Product Solutions, 3-6-25*

IMM Revision: Individual Country Listing for Malta

Effective March 6, 2025, the Postal Service™ is revising the Individual Country Listing for Malta in *Mailing Standards of the United States Postal Service*, International Mail Manual (IMM®) to request that the mailer:

- Provide the addressee’s mobile phone number and email address, if available, on the customs declaration form on all items containing goods mailed to Malta.
- Write or print the addressee’s contact phone number, if available, on the address labels attached to the items.

This revision is based on a formal request that MaltaPost (the designated postal operator of Malta) made through Universal Postal Union *International Bureau Circular* 206, dated December 23, 2024.

Mailing Standards of the United States Postal Service, International Mail Manual (IMM)

* * * * *

Individual Country Listings

* * * * *

Malta

Country Conditions for Mailing

* * * * *

Observations

* * * * *

[Revise Observation 5. to add item c. to read as follows:]

- c. Addressee’s contact mobile phone number and email address.

[Add Observation 6. to read as follows:]

- 6. Malta requests that the mailer write or print the addressee’s contact phone number, if available, on the address labels attached to the items.

* * * * *

Although effective March 6, 2025, the Postal Service will incorporate these revisions into the next edition of the online IMM, which is available via Postal Explorer® at pe.usps.com.

— Product Classification, Product Solutions, 3-6-25

IMM Revision: Individual Country Listing for Montenegro

Effective March 6, 2025, the Postal Service™ is revising the Individual Country Listing for Montenegro in *Mailing Standards of the United States Postal Service, International Mail Manual (IMM)®* to add two new observations — one about customs duty changes, and one about information to be shown on the customs declaration form when mailing items containing goods to Montenegro.

This revision is based on a formal request that Montenegro Post (the designated postal operator of Montenegro) made through the Universal Postal Union via *International Bureau Circulars* 12 and 14, both dated February 3, 2025.

Mailing Standards of the United States Postal Service, International Mail Manual (IMM)

* * * * *

Individual Country Listings

* * * * *

Montenegro

Country Conditions for Mailing

* * * * *

Observations

[Add two entries to read as follows (replacing “None”):]

1. The customs declaration exemption threshold for international postal items delivered to natural persons and containing noncommercial goods has been removed as of January 1, 2025. Import customs duty is now applied at a rate of 21 percent of the content value for all inbound postal items containing goods.
2. Montenegro Post (the designated postal operator of Montenegro) requests that the mailer include the addressee’s phone number (preferably mobile) and the addressee’s email address (if available) on the customs declaration form.

* * * * *

Although effective March 6, 2025, the Postal Service will incorporate these revisions into the next edition of the online IMM, which is available via Postal Explorer® at pe.usps.com.

— Product Classification, Product Solutions, 3-6-25

IMM Revision: St. Pierre and Miquelon

Effective March 6, 2025, the Postal Service™ is revising *Mailing Standards of the United States Postal Service®*, *International Mail Manual (IMM)®* to reflect the following revisions:

- The country group assignments for St. Pierre and Miquelon.
- The Foreign Office of Exchange Code for International Priority Airmail® destined for St. Pierre and Miquelon.

These revisions are based on Order No. 8573 issued January 13, 2025, in PRC Docket No. MC2025-424. The order is available on the PRC website at prc.gov.

The Postal Service made similar revisions to Notice 123, *Price List*, which is available on Postal Explorer® at pe.usps.com. (See the Notice 123 article on page 35 of this *Postal Bulletin*.)

Mailing Standards of the United States Postal Service, International Mail Manual (IMM)

* * * * *

2 Conditions for Mailing

* * * * *

290 Commercial Services

* * * * *

292 International Priority Airmail (IPA) Service

* * * * *

292.4 Mail Preparation

* * * * *

292.45 IPA Foreign Office of Exchange Codes and Price Groups

* * * * *

Exhibit 292.45a

IPA Foreign Office of Exchange Codes and Price Groups

[Revise the entry for Saint Pierre and Miquelon to read as follows:]

Country Labeling Name	Foreign Office of Exchange Code	Price Group
* * *	* *	*
Saint Pierre and Miquelon	ROI	15
* * *	* *	*
Country Price Groups and Weight Limits		
* * *	* *	*

[Revise the entry for Saint Pierre and Miquelon to read as follows:]

Country	Global Express Guaranteed		Priority Mail Express International			Priority Mail International			First-Class Mail International and First-Class Package International Service	
	Price Group	Max. Wt. (lbs.)	Price Group	Max. Wt. (lbs.)	PMEI Flat Rate Envelopes Price Group ¹	Price Group	Max. Wt. (lbs.)	PMI Flat Rate Envelopes and Boxes Price Group ²	FCMI Price Group ³	FCPIS Price Group ⁴
* * *	* *	* *	* *	* *	* *	* *	* *	* *	* *	* *
Saint Pierre and Miquelon	n/a	n/a	n/a	n/a	n/a	15	66	4	5	15
* * *	* *	* *	* *	* *	* *	* *	* *	* *	* *	* *

Individual Country Listings

* * * * *

Saint Pierre and Miquelon

* * * * *

[For the Priority Mail International section, revise the heading to read as follows (changing the price group from 4 to 15):]

Priority Mail International (230) Price Group 15

* * * * *

[For the First-Class Mail International section, revise the heading to read as follows (changing the price group from 4 to 5):]

First-Class Mail International (240) Price Group 5

* * * * *

[For the First-Class Package International Service section, revise the heading to read as follows (changing the price group from 3 to 15):]

First-Class Package International Service (250) Price Group 15

* * * * *

Although effective March 6, 2025, the Postal Service will incorporate these revisions into the next edition of the online IMM, which is available via Postal Explorer at pe.usps.com.

— Product Classification, Product Solutions, 3-6-25

Experience the Thrills of Summer with *Carnival Nights* Forever® Stamps



ON SALE
JUNE 6, 2024

Pull-Out Information

Fraud

Missing, Lost, or Stolen U.S. Money Order Forms

Do Not Cash — Upon Receipt, Notify Local Postal Inspectors

Provide this listing to all Postal Service™ employees responsible for accepting and cashing postal money orders. Destroy all interim notices when the numbers listed appear in the *Postal Bulletin*. The new money order serial numbers consist of the first 10 digits. The eleventh digit is a check digit only.

Do not cash outdated money orders **104 151 601 to 692 600 000**. Advise holders to send invalid money orders to Canada Post Corporation, Ottawa, Canada K1A 0B1. Check for altered dollar amounts by holding money orders to the light.

010 001 0200 to 0299	035 035 4337 to 4399	066 648 2880 to 2899	094 580 7062 to 7099
010 504 1932 to 1999	037 312 7500 to 7599	066 787 3639 to 3699	094 639 4200 to 4299
011 582 1889 to 1899	037 706 9578 to 9599	066 845 7500 to 9999	095 070 7186 to 7199
011 588 2900 to 3099	037 805 3677 to 3699	067 093 3869 to 3899	095 076 8300 to 8399
012 441 0784 to 0799	037 909 5490 to 5499	068 895 0334 to 0399	095 354 6864 to 6899
012 579 5675 to 5699	037 931 4660 to 4699	070 724 4488 to 4499	097 224 1350 to 1599
013 289 6176 to 6199	039 145 6521 to 6595	070 841 9181 to 9199	100 160 3800 to 3899
013 610 0014 to 0099	040 024 3901 to 3999	070 844 2546 to 2599	104 667 6400 to 6499
014 932 1000 to 1099	040 674 7100 to 7199	070 916 1340 to 1399	104 876 8937 to 8999
014 972 0800 to 0899	040 688 8816 to 8899	071 047 5768 to 5799	112 049 4413 to 4499
015 363 0065 to 0099	041 299 6752 to 6799	071 179 9800 to 9899	112 870 9765 to 9799
017 028 3200 to 3299	041 623 8889 to 8899	071 386 3682 to 3699	113 319 2000 to 2099
018 569 5333 to 5399	041 803 6565 to 6599	071 507 6840 to 6899	114 402 3850 to 3899
018 986 5264 to 5299	043 129 1968 to 1997	072 045 9641 to 9699	114 866 5368 to 5397
019 518 2814 to 2899	043 205 5922 to 5999	072 675 8287 to 8299	116 154 2800 to 2899
020 698 5159 to 5199	044 087 3457 to 3499	073 763 0867 to 0876	116 986 4400 to 4499
020 844 7307 to 7399	044 087 4000 to 4099	073 763 0878 to 0887	117 175 1647 to 5169
020 972 8948 to 8999	044 226 2487 to 2512	073 763 0889 to 0898	117 951 4687 to 4699
022 021 9110 to 9181	044 306 4200 to 4299	077 617 5481 to 5499	117 951 5200 to 5299
022 037 1411 to 1499	044 306 4370 to 4599	077 999 4001 to 4090	119 786 3051 to 3064
022 527 9201 to 9210	045 524 4121 to 4298	078 174 4475 to 4499	119 815 8961 to 6199
022 529 1882 to 1899	046 800 9870 to 9899	078 219 4931 to 4999	119 850 7400 to 7499
023 637 7169 to 7199	047 352 4000 to 4099	078 250 4756 to 4799	119 850 7700 to 7999
024 380 4100 to 4199	048 383 7650 to 7659	078 823 8312 to 8399	121 634 0460 to 0499
024 496 6870 to 6896	048 396 3647 to 3699	079 374 0300 to 2499	122 451 9879 to 9899
025 092 0987 to 0999	051 142 0755 to 0799	079 807 2342 to 2399	122 714 6805 to 6900
025 369 5535 to 5599	051 774 8857 to 8899	082 721 0228 to 0254	124 916 0304 to 0499
025 729 1151 to 1199	051 781 2875 to 2885	083 140 5000 to 7499	126 423 0136 to 0169
025 729 1643 to 1799	051 977 7010 to 7023	083 784 8886 to 8899	127 500 2328 to 2399
026 492 3180 to 3199	052 058 7115 to 7199	083 913 6915 to 6999	160 901 2254 to 2299
027 361 0430 to 0499	054 450 1130 to 1167	084 478 3920 to 3999	161 103 6581 to 6599
027 369 4482 to 4495	057 670 0563 to 0599	086 000 8271 to 8299	161 194 2857 to 2899
027 671 8762 to 8776	058 187 3836 to 3899	086 798 3840 to 3849	162 032 4447 to 4499
027 787 9886 to 9899	058 523 3003 to 3099	088 404 4472 to 4499	163 257 1085 to 1099
027 965 9487 to 9499	058 591 1153 to 1299	088 404 5584 to 5699	164 359 2406 to 2499
028 100 8069 to 8099	058 895 3746 to 3799	088 757 8688 to 8699	166 101 1433 to 1499
028 191 1852 to 1999	059 986 0814 to 0899	088 757 9400 to 9499	167 555 5201 to 5212
028 850 3000 to 3199	060 406 7650 to 7699	089 358 2248 to 2257	167 555 5214 to 5299
029 510 1500 to 1599	063 491 8122 to 8199	090 663 9678 to 9684	169 618 6274 to 6299
030 687 0903 to 0999	063 916 9968 to 9999	091 818 0071 to 0099	171 806 6878 to 6893
030 701 3442 to 3499	064 091 4500 to 4599	093 106 9346 to 9355	173 639 4685 to 4699
031 077 4507 to 4799	065 170 0471 to 0499	093 203 0500 to 0599	174 238 2779 to 2799
032 295 7500 to 9999	065 255 7909 to 7999	093 684 3630 to 3699	174 281 9347 to 9399
034 394 1000 to 1099	065 392 6345 to 6399	094 081 5074 to 5099	175 251 2600 to 0699
034 943 0400 to 0799	066 099 2014 to 2099	094 216 2555 to 2599	176 281 7937 to 7950

176 281 7963	to	7999	219 568 7435	to	7456	252 612 3683	to	3699	258 405 4200	to	4299
176 731 6586	to	6599	219 568 7469	to	7487	252 469 2125	to	2199	258 405 4600	to	4699
178 254 5000	to	9999	221 316 5757	to	5799	252 833 3286	to	3297	258 405 5600	to	5699
178 881 9900	to	9999	223 476 3914	to	3999	253 470 3948	to	3999	258 405 5700	to	5799
180 031 2089	to	2098	223 565 4921	to	4957	253 565 7400	to	7499	258 405 5800	to	5899
180 403 7723	to	7741	223 565 4979	to	4999	254 252 2800	to	2899	258 405 5900	to	5999
180 428 4580	to	0599	224 636 4745	to	4765	254 252 2900	to	2999	258 405 6000	to	6099
182 368 7544	to	0599	224 636 4776	to	4799	254 252 3000	to	3099	258 405 6100	to	6199
182 475 3229	to	3258	224 636 4855	to	4885	254 252 3100	to	3199	258 405 6200	to	6299
182 475 3904	to	3933	224 636 4932	to	4948	254 252 3200	to	3299	258 405 6300	to	6399
182 631 0031	to	0099	224 636 4950	to	4962	254 252 3300	to	3399	258 405 6400	to	6499
182 911 6539	to	6600	224 636 4985	to	4999	254 252 3400	to	3499	258 405 6800	to	6899
184 218 2760	to	2799	224 723 0757	to	0799	254 252 3500	to	3599	258 405 6900	to	6999
185 828 1474	to	1499	224 730 2207	to	2299	254 252 3600	to	3699	258 405 7000	to	7099
186 132 7583	to	0599	225 970 0500	to	0599	254 252 3700	to	3799	258 405 7100	to	7199
186 629 0589	to	0599	225 970 0600	to	0699	254 252 3800	to	3899	258 405 7200	to	7299
187 184 6177	to	0199	225 970 0700	to	0799	254 252 3900	to	3999	258 405 7300	to	7399
187 323 8200	to	8299	227 033 8679	to	8699	254 252 4000	to	4099	258 405 7400	to	7499
187 441 6080	to	6099	227 275 9400	to	9999	254 252 4100	to	4199	258 405 7800	to	7899
188 831 6774	to	6799	228 463 2456	to	2499	254 252 4200	to	4299	258 405 7900	to	7999
188 835 6370	to	6399	228 510 4852	to	4899	254 252 4300	to	4399	258 405 8000	to	8099
189 083 1064	to	1099	229 462 8451	to	8475	254 252 4400	to	4499	258 405 8100	to	8199
189 660 9583	to	9599	229 668 5977	to	5999	254 252 4500	to	4599	258 405 8200	to	8299
191 179 0377	to	0399	229 923 9176	to	9199	254 252 4600	to	4699	258 405 8300	to	8399
192 050 5762	to	5781	229 924 6696	to	6699	254 252 4700	to	4799	258 405 8400	to	8499
194 456 8600	to	0699	230 051 9500	to	9999	254 252 4800	to	4899	258 405 8500	to	8599
195 194 6881	to	6899	236 366 2431	to	2499	254 252 4900	to	4999	258 405 8600	to	8699
195 874 1112	to	1199	236 607 6882	to	6899	254 565 7607	to	7700	258 405 8700	to	8799
196 979 0524	to	0599	236 660 5853	to	5872	254 907 1203	to	1299	258 405 8800	to	8899
197 244 6100	to	6199	239 322 5200	to	5299	255 185 9527	to	9599	258 405 8900	to	8999
197 244 6300	to	6399	239 322 5400	to	5499	255 397 1557	to	1576	258 405 9600	to	9699
197 244 6400	to	6499	239 322 5600	to	5699	255 425 2989	to	2998	258 405 9700	to	9799
197 244 6500	to	6599	239 322 5800	to	5899	255 728 6412	to	6499	258 405 9800	to	9899
197 244 6600	to	6699	239 322 5900	to	5999	255 728 9842	to	9899	258 405 9900	to	9999
197 244 6700	to	6799	239 607 4783	to	4799	256 134 9833	to	9839	259 014 9989	to	9999
197 244 6800	to	8999	240 593 1879	to	1899	256 134 9840	to	9849	259 062 4788	to	4798
198 285 2556	to	2566	242 591 2048	to	2099	256 134 9850	to	9859	259 218 1400	to	1499
199 105 0778	to	0799	242 735 0388	to	0398	256 134 9860	to	9869	259 218 1500	to	1599
199 678 2968	to	2999	242 951 7276	to	7299	256 134 9870	to	9879	259 218 1600	to	1699
202 748 5133	to	5199	243 535 6370	to	6399	256 134 9880	to	9889	259 590 5654	to	5699
202 748 5245	to	5299	244 004 9985	to	9999	256 134 9890	to	9899	259 670 8268	to	8299
202 748 5300	to	5399	244 004 9985	to	9999	256 247 6900	to	6999	259 835 6238	to	6399
202 748 5400	to	5499	244 268 9765	to	9799	256 550 5536	to	5545	259 835 6701	to	6799
203 256 1240	to	1299	244 347 4471	to	4499	256 799 2257	to	2299	260 224 4600	to	4699
204 230 3577	to	3595	249 056 1551	to	1599	257 154 8763	to	8799	260 224 5941	to	5999
205 019 0174	to	0199	249 336 9438	to	9499	257 154 8800	to	8899	260 310 2821	to	2899
206 936 3184	to	3199	249 399 4000	to	4099	257 765 4567	to	4599	260 452 0010	to	0022
207 196 9900	to	9999	249 399 4100	to	4199	257 765 4610	to	4696	260 452 0049	to	4299
207 204 0700	to	0799	249 399 4200	to	4299	257 765 4737	to	4799	260 553 8200	to	8299
207 204 0800	to	0899	249 399 4300	to	4399	257 792 7800	to	7889	260 553 8600	to	8699
207 514 3857	to	3899	249 399 4400	to	4499	257 792 7900	to	7999	260 553 9600	to	9799
208 556 4707	to	4799	249 399 4500	to	4599	257 792 8000	to	8099	260 553 9800	to	9899
210 057 4038	to	4047	249 399 4600	to	4699	257 856 9863	to	9899	260 553 9900	to	9999
210 221 0548	to	0599	249 399 4700	to	4799	258 103 1773	to	1782	260 761 1603	to	1662
214 061 4711	to	4724	249 399 4800	to	4899	258 405 1800	to	1899	261 183 2100	to	2299
214 303 6311	to	6325	249 399 4900	to	4999	258 405 1900	to	1999	261 426 0408	to	0499
214 303 6239	to	6258	250 159 7502	to	7599	258 405 3300	to	3399	262 082 8000	to	8099
214 877 4251	to	4273	250 566 9644	to	9699	258 405 3400	to	3499	262 082 8100	to	8199
215 252 3918	to	3992	250 661 8425	to	8499	258 405 3500	to	3599	262 082 8200	to	8299
217 585 1400	to	1499	251 335 5731	to	5799	258 405 3700	to	3799	262 082 8300	to	8399
218 698 2157	to	2199	251 379 2380	to	2399	258 405 3800	to	3899	262 082 8400	to	8499
218 746 0800	to	0899	252 005 7626	to	7699	258 405 3900	to	3999	262 288 7302	to	7399
219 095 0100	to	0399	252 421 8401	to	8499	258 405 4000	to	4099	262 288 7400	to	7499
219 389 1885	to	1899	252 464 2810	to	2899	258 405 4100	to	4199	262 288 9900	to	9999

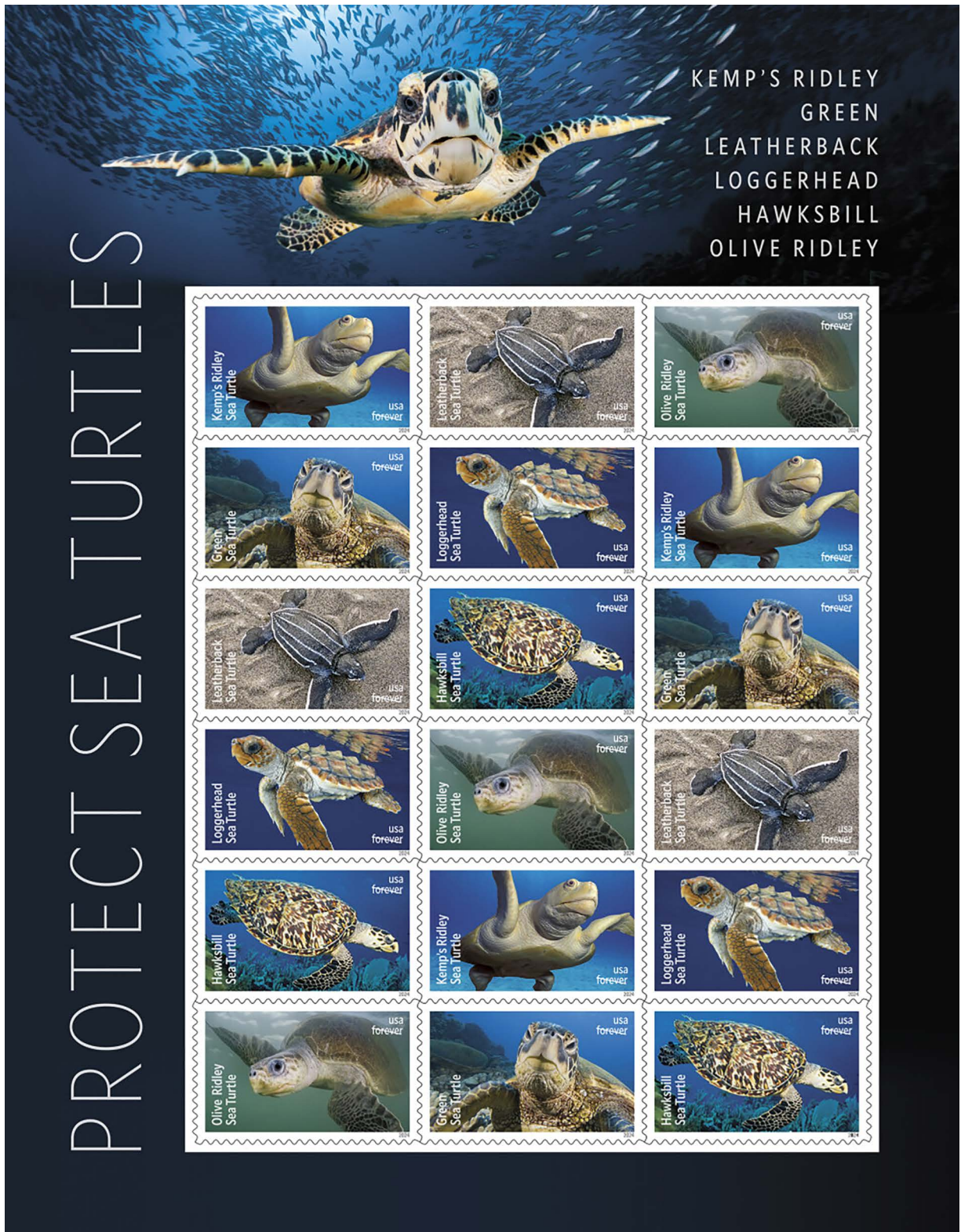
262 337 2600	to	2699	262 337 9000	to	9099	273 775 7700	to	7899	395 343 3264	to	3299
262 337 2700	to	2700	262 337 9100	to	9199	273 882 1913	to	1998	395 373 3035	to	3099
262 337 2800	to	2800	262 337 9200	to	9299	274 750 0300	to	0400	395 396 9649	to	9799
262 337 2900	to	2900	262 337 9300	to	9399	274 782 0549	to	0599	395 970 3240	to	3299
262 337 3000	to	3099	262 337 9400	to	9499	279 517 9330	to	9399	397 622 4054	to	4099
262 337 3100	to	3199	262 337 9500	to	9599	279 517 9594	to	9599	397 819 8902	to	8999
262 337 3200	to	3299	262 337 9600	to	9699	279 517 9623	to	9699	398 149 7200	to	7699
262 337 3300	to	3399	262 337 9700	to	9799	282 667 2500 to 4999			399 070 0872	to	0899
262 337 3400	to	3499	262 337 9800	to	9899	302 000 0000 to 9999			399 156 7119	to	7199
262 337 3500	to	3599	262 337 9900	to	9999	349 746 2056 to 2099			399 203 5064	to	5099
262 337 3600	to	3699	262 472 3188	to	3199	350 518 7350 to 7374			399 296 9910	to	9999
262 337 3700	to	3799	262 472 3200	to	3299	360 011 1690 to 1699			399 396 8935	to	8999
262 337 3800	to	3899	262 546 3100	to	3199	360 168 6008	to	6099	399 792 7775	to	7799
262 337 3900	to	3999	262 546 3200	to	3299	360 173 8800	to	8899	399 792 8300	to	8399
262 337 4000	to	4099	262 546 3300	to	3399	360 324 2326	to	2399	400 427 1051 to 1999		
262 337 4100	to	4199	262 546 3400	to	3499	362 861 3064	to	3099	401 045 1505	to	1549
262 337 4200	to	4299	262 546 3500	to	3599	373 006 2176 to 2199			401 045 1571	to	1599
262 337 4300	to	4399	262 546 3600	to	3699	374 768 2600	to	2699	401 294 2700	to	2799
262 337 4400	to	4499	262 546 3900	to	3999	375 169 4400	to	4599	401 310 9505	to	9599
262 337 4500	to	4599	262 546 4300	to	4399	375 829 3400	to	3499	401 382 5312	to	5399
262 337 4600	to	4699	262 546 4400	to	4499	375 851 9100	to	9199	402 578 7876	to	7899
262 337 4700	to	4799	262 546 4500	to	4599	376 196 0911	to	0999	403 125 6744	to	6799
262 337 4800	to	4899	262 546 4600	to	4699	378 085 3679	to	3699	403 260 7000	to	7499
262 337 4900	to	4999	262 546 4700	to	4799	378 351 1063	to	1099	403 280 6470	to	6499
262 337 5000	to	5099	262 546 4800	to	4899	379 843 5100	to	5199	403 685 8600	to	8699
262 337 5100	to	5199	262 546 4900	to	4999	380 093 9600 to 9699			404 003 0300	to	0399
262 337 5200	to	5299	262 546 7100	to	7199	380 165 1165	to	1199	404 041 8838	to	8899
262 337 5300	to	5399	262 546 7200	to	7299	381 325 4500	to	4599	404 071 4268	to	4299
262 337 5400	to	5499	262 546 7300	to	7399	381 604 2510	to	2699	404 347 5356	to	5399
262 337 5500	to	5599	262 546 7400	to	7499	381 645 9525	to	9599	404 347 5548	to	5599
262 337 5600	to	5699	262 546 9800	to	9899	383 314 3968	to	3999	404 726 4500	to	4599
262 337 5700	to	5799	262 546 9900	to	9999	383 892 1000	to	1344	404 961 5001	to	5199
262 337 5800	to	5899	262 567 1788	to	1799	383 892 1382	to	1399	405 325 0188	to	0198
262 337 5900	to	5999	263 254 2500	to	2500	384 925 3641	to	3654	406 009 4587	to	4599
262 337 6000	to	6099	263 340 0000	to	0099	385 568 2331	to	2399	406 260 6830	to	6899
262 337 6100	to	6199	263 340 0100	to	0199	385 599 7554	to	7575	406 459 6641	to	6999
262 337 6200	to	6299	263 340 0500	to	0599	385 774 2024	to	2099	406 733 3000	to	3999
262 337 6300	to	6399	263 340 0600	to	0699	386 624 1412	to	1599	407 545 1557	to	1599
262 337 6400	to	6499	263 340 2700	to	2799	386 883 8936	to	8999	407 594 0412	to	0599
262 337 6500	to	6599	263 340 2800	to	2899	387 314 5574	to	5599	407 692 9100	to	9299
262 337 6600	to	6699	263 340 3000	to	3099	387 837 6300	to	6399	407 959 2190	to	2199
262 337 6700	to	6799	264 341 2360	to	2399	388 828 0656	to	0699	408 265 2275	to	2288
262 337 6800	to	6899	264 380 4000	to	4099	389 696 2400	to	2799	408 499 7700	to	7799
262 337 6900	to	6999	264 380 4100	to	4199	389 846 3104	to	3135	408 499 7900	to	7999
262 337 7000	to	7099	264 799 6049	to	6099	389 846 3145	to	3195	408 682 8484	to	8599
262 337 7100	to	7199	264 860 7832	to	7868	389 887 9211	to	9230	408 698 7015	to	7099
262 337 7200	to	7299	265 127 3658	to	3699	389 887 9234	to	9299	409 072 3941	to	3999
262 337 7300	to	7399	265 380 7111	to	7137	390 001 3182 to 3199			410 491 2311 to 2399		
262 337 7400	to	7499	265 444 4762	to	4799	390 001 3500	to	3699	410 694 8400	to	8599
262 337 7500	to	7599	265 548 7074	to	7099	390 545 5974	to	5999	410 775 1500	to	1599
262 337 7600	to	7699	266 106 0000	to	2499	391 104 6146	to	6199	410 795 7927	to	7999
262 337 7700	to	7799	266 129 5809	to	5899	391 574 1466	to	1499	410 867 0917	to	0966
262 337 7800	to	7899	266 673 0000	to	2499	391 783 3020	to	3599	410 867 0970	to	0999
262 337 7900	to	7999	266 749 7900	to	7999	391 792 6100	to	6199	411 868 1023	to	1199
262 337 8000	to	8099	266 868 0952	to	0999	392 668 2956	to	2999	411 922 2322	to	2399
262 337 8100	to	8199	266 868 1028	to	1099	392 854 8500	to	8899	412 193 0900	to	0999
262 337 8200	to	8299	266 868 1100	to	1199	393 584 7566	to	7699	412 395 8599	to	8699
262 337 8300	to	8399	266 868 1200	to	1299	393 650 0074	to	0099	412 485 6500	to	6599
262 337 8400	to	8499	267 296 1237	to	1299	393 838 8316	to	8499	412 485 6610	to	6699
262 337 8500	to	8599	267 324 8946	to	8998	393 893 6007	to	6099	412 885 5953	to	5999
262 337 8600	to	8699	268 072 1203	to	1299	394 126 6907	to	6999	414 193 3608	to	3674
262 337 8700	to	8799	271 660 4333 to 4400			394 189 0405	to	0599	414 193 3677	to	3699
262 337 8800	to	8899	273 520 0000	to	9999	394 822 3243	to	3278	414 411 7348	to	7399
262 337 8900	to	8999	273 520 6000	to	8999	394 990 1810	to	1899	414 640 0757	to	0799

414 965 1727 to 1799	436 160 6441 to 6499	458 671 8721 to 8798	476 331 2480 to 2499
417 302 8104 to 8199	437 316 7115 to 7199	458 847 5044 to 5999	477 289 8601 to 8699
417 387 6532 to 6599	437 427 0500 to 3499	459 274 7624 to 7699	477 681 5206 to 5299
417 496 6800 to 6999	439 179 2300 to 2399	459 365 5432 to 5499	478 010 4243 to 4268
417 871 9250 to 9299	439 310 0458 to 0499	459 378 5764 to 5799	478 010 4270 to 4291
417 930 9533 to 9599	440 698 1947 to 1999	459 472 4816 to 4999	478 450 5071 to 5099
418 164 6500 to 6799	440 858 6300 to 6399	460 349 6878 to 6899	478 469 7838 to 7858
418 423 9863 to 9899	440 858 6420 to 7299	460 550 1909 to 1999	478 469 7883 to 7899
418 633 5922 to 5999	441 199 1655 to 1699	460 997 5234 to 5299	479 280 9800 to 9899
418 719 8520 to 8599	443 127 3648 to 3699	461 973 6443 to 6499	479 365 9116 to 9176
418 744 2235 to 2299	443 127 4000 to 4099	462 152 0107 to 0299	479 412 9900 to 9999
418 962 2848 to 2899	443 673 7900 to 7999	462 274 1072 to 1099	479 667 6190 to 6199
419 543 0286 to 0299	443 800 9335 to 9399	462 277 8373 to 8399	479 748 9680 to 9699
419 730 0300 to 0399	444 382 8822 to 8899	462 554 6051 to 6099	479 860 7000 to 7199
420 277 0015 to 0049	444 390 1667 to 1699	463 011 5529 to 5540	480 526 2000 to 2099
420 599 0734 to 0798	444 457 3854 to 3899	463 176 4115 to 4199	480 640 6330 to 6399
420 661 4115 to 4199	450 048 4173 to 4199	463 176 4229 to 4299	480 658 0568 to 0599
420 758 9500 to 9699	450 048 4442 to 4699	463 185 2600 to 2799	480 689 5100 to 5199
420 969 3951 to 3971	450 560 5173 to 5199	463 227 7711 to 7799	481 072 9463 to 9499
420 969 3973 to 3999	450 620 3077 to 3099	463 414 4869 to 4899	481 673 0074 to 0095
421 116 3565 to 3599	450 620 3135 to 3199	463 808 3484 to 3499	482 527 1500 to 1599
421 130 9300 to 9399	450 780 2716 to 2799	463 945 7400 to 7899	482 541 5255 to 5299
421 313 4500 to 4999	450 801 2700 to 2799	464 629 9000 to 9399	482 729 6800 to 6899
421 364 5537 to 5599	451 109 2967 to 2984	464 711 4332 to 4399	483 363 7207 to 7299
421 656 2609 to 2699	451 115 4110 to 4125	465 692 3963 to 3999	483 402 2356 to 2399
421 988 9700 to 9799	451 115 4127 to 4199	465 698 8300 to 8599	483 486 5100 to 5199
422 172 4667 to 4699	451 746 0700 to 0799	465 743 7745 to 7799	483 632 1521 to 1599
422 484 4212 to 4299	452 265 0074 to 0099	466 798 6056 to 6067	483 632 2600 to 2799
422 556 1270 to 1299	452 265 0246 to 0299	467 147 4300 to 4399	483 849 1615 to 1699
422 587 7024 to 7099	452 265 0335 to 0999	468 079 5782 to 5799	484 174 4803 to 5299
422 819 7533 to 7599	452 509 1169 to 1199	469 067 2817 to 2899	484 323 8900 to 9199
422 842 5073 to 5087	452 855 6471 to 6499	469 127 8000 to 8199	484 680 5000 to 5038
422 907 7563 to 7599	452 890 4679 to 4799	469 213 0359 to 0399	484 680 5040 to 5074
424 500 6050 to 6099	452 900 8215 to 8238	469 213 0500 to 0599	484 680 5077 to 5099
424 641 8500 to 8599	453 117 9146 to 9199	469 561 8011 to 8099	485 029 4913 to 4999
424 871 6600 to 6699	453 334 3631 to 3699	469 658 1961 to 1999	486 176 0600 to 0699
425 298 2352 to 2399	453 603 7841 to 7891	469 666 9900 to 9999	486 559 7555 to 7599
425 418 4269 to 4299	453 650 1140 to 1199	469 678 1900 to 1999	486 696 3023 to 3199
425 418 4405 to 4499	453 741 1300 to 1399	469 781 4900 to 4999	488 173 7900 to 7999
426 547 4566 to 4599	454 013 2919 to 2999	469 947 6960 to 6999	488 206 4100 to 4199
427 412 6337 to 6499	454 186 2411 to 2499	470 755 5800 to 5818	488 226 0200 to 0299
427 481 0900 to 0999	454 268 4883 to 4899	471 918 0300 to 0999	488 709 3906 to 3999
428 027 2742 to 2752	454 302 5400 to 5499	471 985 2408 to 2419	488 855 8359 to 8399
429 474 4172 to 4199	454 490 8300 to 8399	472 191 6700 to 6799	489 181 8963 to 8999
429 889 2900 to 2999	454 547 7434 to 7499	472 270 2555 to 2599	489 223 2000 to 2099
430 150 4401 to 4599	454 922 4867 to 4895	472 987 0213 to 0241	489 311 1930 to 1999
430 172 9800 to 9899	455 221 1348 to 1499	472 987 0290 to 0299	489 318 6200 to 6300
430 177 1900 to 2099	455 364 2147 to 2199	473 151 2069 to 2199	489 384 0027 to 0099
430 444 9500 to 9699	455 399 5400 to 5499	473 666 9138 to 9199	489 427 0658 to 0899
430 664 4070 to 4099	455 476 0676 to 0699	473 952 3429 to 3499	489 997 5252 to 5299
432 168 8419 to 8499	455 543 0618 to 0699	474 108 5402 to 5499	490 669 5850 to 6099
432 708 6800 to 6999	456 410 9006 to 9099	474 356 5193 to 5299	490 717 7080 to 7099
432 744 1544 to 1599	456 470 4146 to 4299	474 949 3366 to 3399	490 721 6000 to 6099
432 995 9775 to 9799	456 619 4460 to 4499	475 134 9362 to 9399	490 793 1500 to 2099
433 003 5800 to 5899	457 333 2686 to 2699	475 167 9667 to 9699	490 886 8171 to 8199
433 757 3047 to 3099	457 729 1767 to 1777	475 319 3415 to 3499	490 977 9221 to 9240
433 765 4003 to 4099	457 937 8615 to 8699	475 319 3649 to 3799	491 258 8100 to 9099
434 482 7060 to 7199	458 028 9810 to 9899	475 340 6400 to 6599	491 567 1376 to 1399
434 513 2386 to 2399	458 057 2712 to 2999	475 424 8410 to 8499	492 254 4800 to 4899
434 968 3076 to 3092	458 069 9537 to 9599	475 629 9156 to 9199	492 283 5100 to 5199
435 303 1831 to 1842	458 069 9665 to 9699	475 850 6101 to 6199	492 610 6813 to 6899
435 303 1986 to 1999	458 337 5222 to 5299	475 875 2500 to 2599	493 394 5568 to 5599
435 666 6092 to 6399	458 354 7653 to 7999	476 169 8264 to 8299	493 470 2562 to 2599
436 082 6400 to 6899	458 671 8678 to 8699	476 189 3000 to 3499	493 473 7700 to 7799

493 716 2153 to 2199	513 539 9985 to 9999	618 840 9200 to 9299	640 289 7700 to 7999
494 206 2972 to 2999	513 606 5459 to 5490	619 551 7229 to 7299	641 170 4420 to 4499
494 217 3446 to 3999	513 812 1751 to 1799	619 859 3000 to 3099	641 318 3133 to 3199
494 224 0500 to 0599	514 103 3600 to 3699	620 073 9400 to 9499	641 378 6500 to 6999
495 145 0600 to 0699	514 103 3700 to 3799	621 614 7907 to 7930	641 383 8739 to 8799
496 209 7425 to 7499	514 103 3800 to 3899	621 614 7932 to 7999	641 877 3187 to 3299
496 213 8728 to 8799	600 645 3223 to 3299	621 648 8021 to 8199	641 877 3310 to 3399
496 474 5226 to 5248	601 339 1200 to 1399	621 648 8500 to 8599	642 355 8094 to 8199
497 053 8517 to 8699	601 653 5884 to 5899	621 904 8351 to 8599	642 355 8308 to 8999
497 854 8673 to 8699	601 661 7700 to 7799	621 916 1978 to 1989	642 900 0018 to 0099
498 449 8888 to 8899	601 682 5343 to 5399	622 989 8032 to 8099	643 030 6254 to 6299
498 929 8285 to 8499	601 928 1600 to 1699	623 076 9300 to 9399	644 066 0882 to 0899
498 936 5310 to 5399	602 512 2972 to 2999	623 819 5006 to 5099	644 069 0600 to 0699
499 016 5425 to 5499	602 555 2400 to 2799	623 895 8200 to 8399	644 077 7506 to 7699
499 440 8575 to 8899	602 829 7061 to 7099	623 917 0000 to 0099	644 085 8157 to 8199
499 731 6717 to 6799	603 483 9572 to 9599	623 917 0200 to 0299	644 112 9839 to 8999
500 064 1858 to 1869	603 490 7200 to 7299	624 468 5288 to 5299	644 373 9083 to 9099
500 070 5725 to 7799	603 678 7100 to 7199	624 665 3162 to 3198	644 380 1460 to 1499
501 058 0016 to 0026	603 678 7662 to 7699	625 088 6735 to 6799	644 733 4715 to 4799
501 331 0300 to 0399	603 678 7902 to 7999	625 916 9500 to 9799	644 900 9712 to 9799
501 460 0977 to 0999	603 678 8418 to 8499	625 968 8956 to 8999	644 901 0109 to 1299
502 227 7645 to 7699	603 678 8700 to 9999	627 005 3938 to 3999	644 901 1325 to 1399
502 424 0200 to 0499	604 086 0880 to 0899	627 384 3907 to 4099	644 923 6800 to 7799
502 424 0600 to 0699	604 349 1414 to 1499	627 496 7549 to 7599	644 932 4655 to 4699
502 496 6923 to 6999	604 503 7776 to 7799	627 708 3605 to 3699	645 318 7240 to 7499
503 003 2700 to 2899	605 520 9037 to 9099	627 776 2500 to 2599	645 333 1766 to 1799
503 194 5144 to 5153	605 685 4010 to 4099	628 226 3100 to 3199	645 790 8632 to 8699
503 790 9922 to 9948	605 988 6467 to 6499	628 814 4702 to 4799	645 821 0657 to 0699
504 045 4030 to 4099	607 689 7951 to 7960	628 851 9689 to 9699	645 930 7948 to 7999
504 166 0200 to 0599	607 728 1276 to 1299	629 510 7200 to 7299	645 975 0737 to 0762
504 240 1062 to 1399	608 727 7100 to 7199	629 964 4200 to 4294	646 242 6200 to 6299
504 805 3300 to 3499	608 727 7273 to 7599	630 389 3056 to 3071	646 270 7639 to 7799
505 096 0662 to 0699	608 813 9950 to 9999	630 463 0588 to 0599	646 798 4000 to 4999
505 893 7739 to 7799	609 067 5325 to 5399	631 459 9117 to 9199	647 048 7035 to 7099
505 893 7800 to 7999	609 067 5488 to 5499	631 762 9325 to 9399	647 049 2900 to 2999
506 124 0800 to 0999	609 067 5600 to 5699	632 217 4933 to 4999	647 398 8300 to 8399
506 165 7027 to 0099	609 289 6123 to 6199	632 500 0000 to 640 3999	647 398 8481 to 8499
506 502 5209 to 5299	609 438 4400 to 4499	633 110 4165 to 4199	647 437 3000 to 4999
506 756 1682 to 1699	609 493 1100 to 1199	633 110 4303 to 4499	647 811 2188 to 2199
506 756 1700 to 1799	609 766 8091 to 8999	633 438 6429 to 6599	648 009 6057 to 6099
506 756 1800 to 1899	609 825 4100 to 4115	633 588 7173 to 7182	648 163 5300 to 5499
506 836 5326 to 5399	609 884 2981 to 2999	634 725 0700 to 0799	648 722 5283 to 5299
508 488 6226 to 6299	609 893 1000 to 1099	634 803 3239 to 3299	648 892 3164 to 3199
508 789 8332 to 8399	610 092 3200 to 3299	634 807 2474 to 2499	649 100 3989 to 3999
508 789 8400 to 8499	610 582 4200 to 4299	634 827 5900 to 5999	649 647 0370 to 0399
509 909 0425 to 0435	611 879 6939 to 6999	634 886 3428 to 3499	649 647 0522 to 0599
510 150 2400 to 2499	612 291 8013 to 8099	635 559 3449 to 3499	649 647 5237 to 5399
510 381 3200 to 3299	612 751 5171 to 5199	636 289 6214 to 6299	649 647 9100 to 9299
510 587 9500 to 9599	612 751 5226 to 5299	636 634 8007 to 8042	649 666 7800 to 8299
510 587 9659 to 9699	612 751 6083 to 6099	637 150 1200 to 1299	650 114 7707 to 7719
510 269 9770 to 9999	612 751 6268 to 6299	637 562 5828 to 5899	650 130 3400 to 3599
511 021 5042 to 5099	612 751 6572 to 6599	638 042 1647 to 1699	650 213 0406 to 0499
511 021 5100 to 5199	612 774 2111 to 2199	638 049 4984 to 4999	650 555 1749 to 1799
511 468 1747 to 1799	612 774 2254 to 2299	638 318 1115 to 1199	650 564 1900 to 1999
511 844 0100 to 0199	612 774 2500 to 2599	638 318 1453 to 1499	650 627 4212 to 4299
511 844 0340 to 0399	614 469 0979 to 0999	638 885 0000 to 0299	650 736 2043 to 2099
512 805 3913 to 3919	614 474 3000 to 3099	638 903 4362 to 4373	650 739 1540 to 1699
513 046 0700 to 0726	614 521 3490 to 3499	639 415 1929 to 1999	651 741 4415 to 4499
513 149 0600 to 0699	614 645 1800 to 1899	639 415 2019 to 2099	651 882 2800 to 2899
513 445 3000 to 3199	614 832 1100 to 2099	639 420 6200 to 6299	652 754 6317 to 6399
513 466 2034 to 2044	615 017 7505 to 7599	639 469 3517 to 3799	653 131 4945 to 4999
513 539 9052 to 9099	617 711 6609 to 6699	639 605 2143 to 2199	653 426 3300 to 3399
513 539 9267 to 9299	617 760 5266 to 5299	639 657 8600 to 8799	653 455 4874 to 4899
513 539 9800 to 9899	617 813 3601 to 3699	640 289 7500 to 7599	654 238 0000 to 0399

654 404 3065 to 3092	682 956 6490 to 6599	701 499 2260 to 2299	740 918 5531 to 5549
654 962 2900 to 3199	682 956 6700 to 6799	701 503 2247 to 2299	741 037 8528 to 8551
655 103 5081 to 5199	682 965 1178 to 1199	701 541 2271 to 2299	742 030 6135 to 6149
655 523 2600 to 2999	682 965 1201 to 1299	701 553 6557 to 6599	742 033 2663 to 2674
656 305 2448 to 2499	683 118 2389 to 2399	701 578 7460 to 7469	742 040 3300 to 3309
657 347 4438 to 4999	683 378 2000 to 2099	701 578 7475 to 7499	742 112 8155 to 8199
657 710 8100 to 8999	683 378 2117 to 2299	701 601 3457 to 3499	742 151 5000 to 5014
657 780 0985 to 0999	683 415 1200 to 1499	701 605 5913 to 5999	742 191 4640 to 4649
658 586 1400 to 1499	683 444 8159 to 8199	701 695 3982 to 3999	742 192 5210 to 5224
658 877 8000 to 8199	685 154 7780 to 7789	701 695 4148 to 4199	742 222 9200 to 9210
658 880 8000 to 8199	685 297 7645 to 7699	701 695 4227 to 4299	742 228 9660 to 9669
659 398 7300 to 7399	685 623 5264 to 5299	701 708 1741 to 1799	742 247 6980 to 6989
659 706 8113 to 8199	685 650 9487 to 9499	701 736 3966 to 3999	742 290 0936 to 0950
659 846 7837 to 7899	685 669 4200 to 4299	701 772 0870 to 0899	742 302 7600 to 7699
660 510 4100 to 4199	685 757 8452 to 8499	701 838 2800 to 2899	742 305 3711 to 3799
660 673 0400 to 0599	686 071 2694 to 2799	701 941 0600 to 0699	742 305 3800 to 3899
661 488 5000 to 5099	686 176 3333 to 3354	702 171 1603 to 1699	742 305 3900 to 3999
661 609 9100 to 9199	686 372 3200 to 3299	702 195 5109 to 5199	742 305 4000 to 4099
661 716 9420 to 9499	686 644 5879 to 5899	702 254 9300 to 9399	742 305 4100 to 4199
661 906 6522 to 6599	686 899 1371 to 1399	702 264 7569 to 7599	805 885 8411 to 8499
662 021 8332 to 8399	686 931 7636 to 7699	702 519 0513 to 0524	806 087 1100 to 1499
662 068 0700 to 0899	687 601 0973 to 0999	702 713 1800 to 1809	806 268 9275 to 9299
662 553 0774 to 0799	687 614 6774 to 6799	702 821 5730 to 5799	806 534 3400 to 3477
663 078 7034 to 7099	688 120 9000 to 9999	702 821 5805 to 5899	807 342 3283 to 3399
663 763 5300 to 5399	688 314 3107 to 3191	702 844 6975 to 6994	808 086 7100 to 7199
663 883 7039 to 7499	690 291 1361 to 1371	702 846 6331 to 6399	808 090 3440 to 3499
663 938 9200 to 9299	690 788 2877 to 2899	702 848 3900 to 3999	808 325 5161 to 5699
664 253 8000 to 8499	690 893 5344 to 5399	702 857 7302 to 7499	808 784 8000 to 8299
664 656 3055 to 3099	690 893 5512 to 5599	702 878 0114 to 0199	830 125 0672 to 0699
665 174 6400 to 6499	690 904 1300 to 1599	703 364 1707 to 1799	830 602 5800 to 5999
665 274 8208 to 8299	690 941 6000 to 6199	740 002 7710 to 7719	830 610 3700 to 3799
665 669 5400 to 5499	691 313 6383 to 6399	740 037 6730 to 6800	830 983 3500 to 3599
666 132 8226 to 8299	691 313 6600 to 6699	740 119 2275 to 2284	830 983 3635 to 3699
666 696 2209 to 2299	691 582 8003 to 8099	740 130 6688 to 6698	831 354 1387 to 1399
666 696 2309 to 2399	691 664 1800 to 1999	740 144 2780 to 2795	831 815 8240 to 8299
667 032 9300 to 9399	691 664 2400 to 2499	740 241 9049 to 9099	832 525 3810 to 3899
667 729 5529 to 5599	692 727 9362 to 9399	740 252 9265 to 9294	833 159 1884 to 1899
668 383 8400 to 8699	692 798 1800 to 1899	740 255 1718 to 1799	833 456 2567 to 2599
670 368 3400 to 3499	693 249 0779 to 0799	740 274 2602 to 2619	833 566 3015 to 3071
670 369 7336 to 7399	693 249 0877 to 1699	740 277 0366 to 0392	834 130 5200 to 5299
670 750 7169 to 7199	693 445 0566 to 0999	740 332 7658 to 7671	834 316 5444 to 5499
671 046 6200 to 6399	693 448 8500 to 8999	740 348 6641 to 6658	834 354 8747 to 8766
671 251 5448 to 5499	693 645 9583 to 9599	740 351 4790 to 4799	834 354 8824 to 8838
671 926 5600 to 5799	693 965 4200 to 4299	740 374 7416 to 7499	835 269 5700 to 5799
672 444 2000 to 2999	695 741 2906 to 2999	740 470 2420 to 2443	835 496 7303 to 7399
672 828 3410 to 3499	695 947 8518 to 8599	740 514 0300 to 0499	835 539 5200 to 5999
673 167 5776 to 5799	696 662 8247 to 8299	740 523 7432 to 7449	835 813 3015 to 3099
675 464 3700 to 3799	697 447 8285 to 8296	740 535 1555 to 1580	837 672 8967 to 8999
675 464 4000 to 4199	698 042 4816 to 4899	740 557 3570 to 3579	837 784 3282 to 3299
676 365 5958 to 5999	698 131 2138 to 2157	740 650 4104 to 4140	838 176 8377 to 8399
676 669 1024 to 1099	698 227 0000 to 0099	740 684 0620 to 0800	838 518 1257 to 1299
677 126 6734 to 6799	700 065 2570 to 2599	740 701 6105 to 6114	839 718 8257 to 8299
677 333 9979 to 9999	700 065 4800 to 4899	740 705 9790 to 9799	840 323 0600 to 0699
677 466 1088 to 1099	700 190 3350 to 3359	740 726 6400 to 6500	840 875 6235 to 6299
678 071 4500 to 4799	700 228 6048 to 6099	740 748 8319 to 8329	840 910 0900 to 0999
678 096 7531 to 7599	700 650 0452 to 0499	740 765 3306 to 3399	841 349 5000 to 5099
679 909 2578 to 2599	700 666 1323 to 1349	740 774 8434 to 8499	841 805 7747 to 7899
680 112 9565 to 9599	700 786 9106 to 9142	740 779 4259 to 4299	841 805 7944 to 8099
680 244 0903 to 0999	700 859 0744 to 0758	740 786 1885 to 1899	842 226 0685 to 0695
680 412 6046 to 6099	701 028 6780 to 6899	740 790 5989 to 5999	842 685 4600 to 4699
680 761 6800 to 6899	701 213 3900 to 3999	740 803 4870 to 4879	842 685 4742 to 4999
681 677 0540 to 0699	701 267 2000 to 3999	740 820 4854 to 7836	842 860 0300 to 0399
682 070 1029 to 1099	701 335 7312 to 7399	740 827 7578 to 7594	842 898 5582 to 5599
682 956 6280 to 6299	701 369 2005 to 2050	740 917 7490 to 7499	843 062 7100 to 7199

843 077 6288	to	6299	864 520 6117	to	6136	907 815 0216	to	0257	919 915 2774	to	2787
843 077 6378	to	6399	865 151 0526	to	0599	908 622 4225	to	4235	920 155 4662	to	4687
843 758 5769	to	5778	865 500 4034	to	4099	908 936 9254	to	9299	920 309 9039	to	9199
843 786 2554	to	2699	865 883 6082	to	6099	909 066 4494	to	7499	920 771 5321	to	5399
845 656 8165	to	8199	866 004 3000	to	3999	909 067 7400	to	7499	920 857 5500	to	5899
845 727 2100	to	2199	866 442 4100	to	4899	909 100 1787	to	1799	920 864 3480	to	3499
845 746 2618	to	2635	867 366 9108	to	9118	909 100 1900	to	2099	920 963 4567	to	4599
846 390 7531	to	7599	867 633 7403	to	7499	909 355 0422	to	0499	921 333 7400	to	7499
846 918 0572	to	0599	867 737 5623	to	5699	909 568 8900	to	9099	921 477 3762	to	3799
847 237 7690	to	7699	868 169 4529	to	4599	909 568 9300	to	9499	922 278 1048	to	1399
847 284 2481	to	2499	868 173 8400	to	8599	909 725 7307	to	7399	922 280 2019	to	2099
847 374 7055	to	7065	868 514 9000	to	9099	909 833 0947	to	0999	922 280 2233	to	2299
847 374 7055	to	7065	868 566 9200	to	9299	910 219 8631	to	8699	922 773 0459	to	0499
847 636 5304	to	5399	869 200 0000	to	9999	910 265 1100	to	1199	923 032 7000	to	7399
847 700 5447	to	5499	869 387 1150	to	1199	910 471 7273	to	7299	923 045 3630	to	3699
847 723 7500	to	7599	869 505 3500	to	3599	910 536 2505	to	2599	923 484 3600	to	3699
849 485 3427	to	3499	869 523 7033	to	7099	910 958 7499	to	7599	923 493 9403	to	9599
849 520 9850	to	9899	869 566 6150	to	6167	911 140 1000	to	2199	923 493 9681	to	9699
849 608 1357	to	1399	869 776 8785	to	8786	911 245 2545	to	2599	923 604 4424	to	4499
849 792 2600	to	2699	869 800 0000	to	999 9999	911 268 9077	to	9099	923 810 7800	to	8299
850 546 1862	to	1899	870 054 4814	to	4899	911 400 8948	to	8999	924 252 1200	to	1299
851 143 6826	to	6844	870 491 4812	to	4849	911 508 1620	to	1799	924 252 1400	to	1499
851 209 9880	to	9899	870 536 5820	to	5829	911 509 9310	to	9399	924 533 0711	to	0799
851 928 9221	to	9299	870 541 7167	to	7239	911 523 3000	to	3999	924 533 2343	to	2399
852 589 6560	to	6599	870 575 8155	to	8999	912 057 9922	to	9999	924 533 2428	to	2499
853 049 3646	to	3699	870 589 0485	to	0494	912 882 0563	to	0899	924 685 1957	to	1999
854 304 4089	to	4999	870 691 7060	to	7099	913 605 2218	to	2299	924 946 6300	to	6699
854 529 2200	to	2299	872 028 4850	to	4899	913 709 2429	to	2499	925 333 5900	to	6099
854 532 0000	to	2999	872 029 9306	to	9399	913 818 3501	to	3999	925 336 2300	to	2399
855 001 6204	to	6249	872 078 3709	to	3799	914 063 4300	to	4399	926 432 5907	to	5999
855 319 9364	to	9399	872 100 0445	to	0459	914 346 7621	to	7644	926 436 3600	to	3699
855 361 3390	to	3399	900 556 4178	to	4199	914 453 1366	to	1399	927 765 6257	to	6299
856 226 0490	to	0499	900 845 0044	to	0099	914 529 6185	to	6299	928 197 8100	to	8199
856 656 5800	to	5999	900 936 0217	to	0299	914 896 4658	to	4699	928 197 8283	to	8299
856 752 0200	to	0299	900 936 0435	to	0499	915 187 8774	to	8779	928 856 2059	to	2068
857 111 1352	to	1399	901 058 5255	to	5280	915 300 2783	to	2799	930 078 5800	to	5899
857 279 3450	to	3499	901 273 1082	to	1099	915 546 6822	to	6999	930 219 1722	to	1799
857 843 4000	to	4099	901 287 5143	to	5199	915 646 5183	to	5199	930 335 7810	to	7819
858 124 7644	to	7699	901 291 2789	to	2799	915 671 3963	to	3980	931 097 9259	to	9299
858 756 3111	to	3299	901 525 7122	to	7199	915 671 3982	to	3999	931 156 1502	to	1579
859 063 8200	to	8699	902 089 1253	to	1299	915 675 2217	to	2299	931 156 1600	to	1625
859 190 0600	to	0644	902 198 9769	to	9799	916 440 3377	to	3399	931 156 1671	to	1699
859 437 5538	to	5599	902 948 1269	to	1299	916 670 6352	to	6399	932 506 6400	to	6599
859 811 2888	to	2899	902 985 0833	to	0899	916 682 5300	to	5399	932 732 1796	to	1799
859 855 8873	to	8999	903 370 6934	to	6999	916 694 1414	to	1499	932 827 9026	to	9099
860 240 8520	to	8599	904 600 6523	to	6599	916 703 0802	to	0821	932 957 2300	to	2399
860 275 3900	to	3999	904 892 0378	to	0399	917 089 0709	to	0799	933 060 6160	to	6189
860 518 9629	to	9699	904 892 0648	to	1299	917 089 0842	to	0899	933 387 2541	to	2561
860 600 0021	to	0999	905 056 2216	to	2299	917 216 2928	to	2999	933 760 3609	to	4199
861 158 2350	to	2599	905 510 6647	to	6799	917 370 6300	to	6499	933 894 0928	to	0999
861 367 5400	to	5499	905 510 6900	to	7099	917 486 4900	to	4999	934 018 2729	to	2741
861 637 6010	to	6099	905 794 0000	to	0199	918 460 0602	to	0699	934 180 0300	to	0399
861 979 7292	to	7499	905 794 0288	to	0299	918 951 7231	to	7299	934 236 3954	to	3999
862 216 6100	to	6199	905 873 6900	to	6999	919 519 2786	to	2799	934 622 8717	to	8999
862 263 9213	to	9299	905 873 7100	to	7299	919 536 0770	to	0799	935 216 0312	to	0399
862 271 0800	to	0999	905 880 8900	to	8999	919 814 3095	to	3199	935 843 2202	to	2247
862 271 5000	to	5099	905 889 7100	to	7199	919 889 5110	to	5134	936 024 8889	to	8899
863 871 5138	to	5199	906 158 1508	to	1599	919 889 5137	to	5176	936 339 4455	to	4499
863 949 5300	to	5399	906 558 8812	to	8899	919 889 5178	to	5199			
864 088 8200	to	8299	906 982 2214	to	2299	919 889 5030	to	5070			
864 426 3972	to	3999	907 725 8500	to	8599	919 889 5090	to	5099			



PROTECT SEA TURTLES

KEMP'S RIDLEY
 GREEN
 LEATHERBACK
 LOGGERHEAD
 HAWKSBILL
 OLIVE RIDLEY



Missing, Lost, or Stolen Canadian Money Order Forms

Do Not Cash — Upon Receipt, Notify Local Postal Inspectors

Provide this listing to all Postal Service™ employees responsible for accepting and cashing postal money orders. Destroy all interim notices when the numbers listed appear in the *Postal Bulletin*. The new money order serial

numbers consist of the first 9 digits. The tenth digit is a check digit only.

Do not cash outdated money orders **104 151 601 to 692 600 000**. Advise holders to send invalid money orders to Canada Post Corporation, Ottawa, Canada K1A 0B1. Check for altered dollar amounts by holding money orders to the light.

719 869 731	to	9 760	728 382 331	to	2 480	734 797 201	to	7 320	741 764 431	to	4 520
720 227 871	to	7 930	728 702 338	to	2 400	734 939 611	to	9 640	742 178 834	to	8 880
720 227 949	to	7 960	728 915 371	to	5 850	734 950 111	to	0 170	742 325 500	to	5 520
720 368 543	to	8 570	728 953 141	to	3 410	735 120 331	to	0 840	742 325 668	to	5 700
720 392 151	to	2 570	728 954 280	to	4 310	735 283 008	to	3 020	742 408 771	to	8 830
720 556 491	to	6 640	729 169 081	to	9 140	735 293 131	to	3 220	742 512 120	to	2 150
720 558 621	to	8 650	729 363 841	to	3 870	735 635 010	to	5 040	742 684 849	to	4 890
720 575 361	to	5 570	729 682 891	to	3 190	735 783 961	to	3 990	742 839 553	to	9 630
720 590 152	to	0 179	729 838 940	to	9 070	735 803 401	to	3 430	742 913 668	to	3 700
721 638 331	to	9 170	729 839 101	to	9 130	736 005 420	to	5 440	742 917 287	to	7 296
721 815 391	to	5 420	730 077 683	to	7 840	736 366 021	to	6 110	742 921 891	to	1 980
721 969 713	to	9 740	730 109 847	to	9 880	736 624 456	to	4 500	742 983 631	to	3 810
722 072 137	to	2 160	730 373 761	to	3 850	736 670 851	to	1 060	743 020 021	to	0 170
722 378 265	to	8 280	730 501 951	to	2 130	736 767 061	to	7 090	743 206 491	to	6 500
722 413 990	to	4 004	730 519 379	to	9 470	736 767 093	to	7 120	743 235 992	to	6 050
722 764 948	to	4 980	730 569 278	to	9 360	736 982 191	to	2 370	743 940 631	to	0 900
722 825 840	to	5 889	730 711 711	to	1 740	736 982 551	to	2 730	743 978 011	to	8 070
723 153 841	to	3 850	730 722 991	to	3 230	737 110 141	to	0 170	744 234 751	to	4 780
723 237 616	to	7 630	730 845 970	to	5 990	737 185 501	to	5 710	744 499 591	to	9 680
723 331 081	to	1 110	730 888 291	to	8 320	737 317 321	to	7 350	744 626 901	to	6 910
723 496 443	to	6 470	730 927 591	to	7 680	737 517 781	to	7 840	745 388 794	to	8 910
723 967 291	to	7 320	731 307 914	to	7 930	737 628 181	to	8 210	746 446 806	to	6 820
724 655 196	to	5 340	731 402 431	to	2 460	737 634 258	to	4 270	746 818 351	to	8 410
724 711 441	to	1 500	731 407 232	to	7 320	738 361 971	to	1 980	747 245 266	to	5 280
724 711 538	to	1 560	731 588 301	to	8 340	738 447 601	to	7 660	747 364 813	to	4 830
724 793 221	to	3 250	731 767 273	to	7 320	738 648 355	to	8 450	747 501 434	to	1 450
724 908 109	to	8 120	731 781 061	to	1 120	738 849 811	to	9 900	747 739 891	to	0 070
724 937 461	to	7 670	731 837 821	to	7 910	738 892 270	to	2 290	748 148 649	to	8 760
725 163 118	to	3 151	731 841 377	to	1 450	738 997 259	to	7 380	748 259 960	to	9 970
725 202 735	to	2 750	732 018 481	to	8 600	739 161 451	to	1 540	748 565 162	to	5 280
725 398 591	to	8 800	732 067 972	to	8 370	739 219 381	to	9 440	748 874 988	to	5 030
725 464 591	to	4 920	732 188 649	to	8 670	739 740 151	to	0 180	749 137 381	to	7 410
725 475 321	to	5 330	732 193 460	to	3 470	739 793 491	to	3 520	749 190 192	to	0 210
725 711 057	to	1 070	732 201 241	to	1 390	739 793 527	to	3 550	749 685 421	to	5 450
725 738 581	to	8 730	732 220 431	to	0 440	739 942 621	to	2 650	749 846 791	to	6 850
725 981 311	to	1 430	732 355 201	to	5 380	739 999 231	to	9 320	749 993 131	to	3 580
725 987 835	to	7 880	732 472 320	to	2 560	740 011 517	to	1 530	750 071 587	to	1 610
726 060 811	to	0 900	732 541 605	to	1 620	740 030 701	to	0 970	750 408 167	to	8 183
726 391 970	to	2 520	732 572 221	to	2 490	740 261 740	to	1 820	750 438 421	to	8 501
726 484 771	to	4 800	732 586 479	to	6 710	740 265 811	to	6 290	750 743 911	to	4 030
726 493 351	to	5 300	732 994 037	to	4 080	740 299 111	to	9 170	750 779 118	to	9 400
726 504 031	to	4 063	733 163 449	to	3 460	740 299 231	to	9 260	750 910 981	to	1 010
726 504 070	to	4 090	733 297 171	to	7 290	740 329 266	to	9 320	750 960 841	to	0 900
726 504 331	to	4 390	733 446 631	to	7 110	740 889 081	to	9 090	751 296 211	to	6 240
726 563 701	to	4 060	733 474 665	to	4 770	741 010 421	to	0 530	751 539 121	to	9 180
726 599 371	to	9 460	733 704 482	to	4 570	741 113 041	to	3 370	751 541 311	to	1 790
726 626 356	to	6 370	733 751 041	to	1 130	741 373 891	to	4 340	751 757 641	to	7 700
727 182 271	to	2 510	734 009 101	to	9 130	741 452 369	to	2 490	751 936 951	to	7 010
727 416 181	to	6 240	734 290 759	to	0 770	741 492 991	to	3 140	751 951 861	to	1 890
727 481 431	to	1 460	734 389 273	to	9 290	741 553 460	to	3 470	751 999 021	to	9 110
727 749 241	to	9 780	734 440 031	to	0 111	741 764 431	to	4 520	752 139 516	to	9 570

752 182 892	to	2 950	762 324 931	to	4 960	773 112 031	to	2 060	799 177 626	to	7 650
752 206 861	to	7 100	762 439 261	to	9 290	773 125 387	to	5 410	799 854 751	to	5 200
752 295 241	to	5 600	762 524 158	to	4 220	773 179 320	to	9 410	800 044 320	to	4 410
752 731 351	to	1 410	762 584 872	to	4 970	773 202 989	to	3 140	800 211 901	to	2 440
752 767 441	to	7 470	762 593 431	to	3 460	773 208 991	to	9 290	800 427 530	to	7 540
753 008 941	to	9 030	763 155 160	to	5 180	773 231 311	to	1 340	800 872 741	to	2 830
753 194 311	to	4 370	763 178 631	to	8 660	773 348 739	to	8 940	801 349 801	to	9 830
753 620 378	to	0 400	763 506 001	to	6 060	773 348 739	to	8 940	801 676 681	to	7 100
754 013 917	to	3 940	763 522 141	to	2 470	773 575 891	to	5 950	802 967 821	to	7 940
754 161 061	to	1 120	763 717 694	to	7 800	773 852 971	to	3 030	803 217 601	to	7 780
754 358 445	to	8 610	763 826 461	to	6 520	775 373 449	to	3 460	803 729 731	to	9 850
754 410 451	to	0 660	763 900 460	to	0 471	789 257 191	to	7 250	803 747 402	to	7 520
754 438 393	to	8 410	763 900 479	to	0 530	790 448 020	to	8 460	804 138 181	to	8 420
754 493 109	to	3 130	763 917 271	to	7 750	790 597 485	to	7 530	804 428 224	to	8 250
754 664 182	to	4 220	764 125 801	to	5 860	790 911 883	to	1 900	804 682 411	to	2 710
754 816 377	to	6 470	764 284 525	to	4 560	791 057 441	to	7 550	805 272 525	to	2 540
755 487 421	to	7 600	764 526 241	to	6 330	791 239 081	to	9 290	805 523 445	to	3 460
755 592 901	to	3 140	764 601 421	to	1 600	791 374 483	to	4 500	805 745 704	to	5 730
755 790 020	to	0 030	764 650 231	to	0 470	791 387 971	to	8 030	806 452 907	to	2 980
755 791 730	to	1 800	764 984 371	to	4 850	791 447 521	to	7 850	806 744 781	to	4 850
755 926 951	to	7 070	765 003 667	to	3 680	791 451 151	to	1 240	806 982 181	to	2 300
755 934 332	to	4 510	765 042 517	to	2 540	791 500 009	to	0 470	807 764 791	to	4 910
755 957 701	to	8 000	765 194 728	to	4 970	791 771 431	to	1 490	808 089 931	to	9 960
755 962 981	to	3 280	765 387 365	to	7 450	792 004 293	to	4 320	808 656 423	to	6 450
756 035 371	to	5 490	765 541 801	to	2 100	792 018 379	to	8 420	808 753 771	to	3 800
756 301 257	to	1 290	765 638 461	to	8 970	792 070 621	to	0 740	809 189 001	to	9 010
756 371 565	to	1 580	765 647 101	to	7 190	792 145 211	to	5 230	809 886 879	to	6 930
756 876 031	to	6 120	765 813 781	to	4 029	792 391 381	to	1 620	809 890 489	to	0 500
756 876 151	to	6 240	765 879 314	to	9 390	792 452 779	to	2 790	810 323 734	to	3 760
756 970 129	to	0 140	765 954 001	to	4 030	792 772 728	to	2 770	810 367 116	to	7 140
757 059 613	to	9 630	766 120 286	to	0 320	792 903 511	to	3 990	810 526 351	to	6 500
757 078 540	to	8 560	766 125 716	to	5 750	793 282 518	to	2 533	810 806 911	to	6 940
757 086 209	to	6 240	766 158 824	to	8 840	794 041 831	to	2 040	810 807 211	to	7 240
757 240 591	to	0 650	766 388 433	to	8 460	794 397 709	to	7 780	811 423 021	to	3 110
757 277 371	to	7 700	766 509 421	to	9 660	794 581 741	to	2 040	811 517 221	to	7 239
757 291 591	to	2 730	766 572 901	to	3 020	794 592 122	to	2 150	811 721 101	to	1 130
757 964 251	to	4 280	766 748 500	to	8 521	795 032 251	to	2 340	812 025 721	to	5 900
758 067 001	to	7 090	767 024 341	to	4 370	795 796 291	to	6 350	812 093 073	to	3 130
758 105 221	to	5 250	767 326 471	to	6 590	796 070 139	to	0 160	812 100 821	to	0 840
758 324 941	to	5 000	767 332 561	to	2 950	796 143 151	to	3 630	812 465 251	to	5 610
758 593 628	to	3 650	768 009 841	to	9 960	796 159 725	to	9 740	812 918 341	to	8 670
758 709 038	to	9 060	768 011 489	to	1 520	796 169 306	to	9 340	812 918 701	to	8 760
758 744 101	to	4 160	768 177 980	to	7 990	796 373 406	to	3 430	813 050 491	to	0 520
758 850 883	to	0 900	768 391 081	to	1 170	796 602 961	to	3 050	813 073 171	to	3 200
758 860 951	to	1 550	768 661 569	to	1 650	796 708 441	to	8 500	813 398 476	to	8 550
759 152 851	to	2 880	769 000 051	to	0 080	796 886 281	to	6 430	813 713 971	to	4 000
759 740 941	to	1 090	769 050 841	to	0 900	796 901 701	to	2 000	813 858 121	to	8 150
760 004 596	to	4 610	769 159 081	to	9 178	796 975 466	to	5 590	814 789 330	to	9 349
760 118 191	to	8 250	769 737 496	to	7 510	797 272 917	to	2 950	814 984 656	to	4 680
760 155 001	to	5 090	769 778 491	to	8 730	797 519 441	to	9 460	815 016 020	to	6 030
760 378 002	to	8 020	769 827 331	to	7 450	797 519 731	to	0 240	815 199 410	to	9 420
760 692 722	to	2 749	770 216 071	to	6 100	797 535 181	to	5 330	815 240 491	to	0 520
761 055 460	to	5 480	770 723 281	to	3 400	797 646 151	to	6 180	815 755 591	to	5 620
761 169 781	to	9 810	770 790 451	to	0 480	798 040 053	to	0 080	815 755 622	to	5 650
761 504 941	to	5 120	770 915 150	to	5 490	798 055 813	to	5 830	815 806 381	to	6 680
761 516 836	to	6 910	771 455 551	to	5 610	798 055 891	to	5 950	816 126 834	to	6 870
761 613 588	to	3 600	771 609 661	to	9 690	798 326 371	to	6 520	816 156 721	to	6 780
761 688 631	to	8 690	771 932 551	to	2 580	798 339 167	to	9 210	816 580 903	to	0 920
761 805 199	to	5 240	772 057 224	to	7 440	798 562 411	to	2 440	816 945 571	to	5 600
761 826 106	to	6 120	772 162 660	to	3 070	798 632 461	to	2 490	817 253 011	to	3 280
761 881 171	to	1 560	772 718 615	to	8 640	798 807 151	to	7 510	817 763 881	to	4 060
761 975 641	to	5 670	772 940 140	to	0 160	798 944 761	to	5 030	818 330 562	to	0 610
761 975 886	to	5 895	772 970 886	to	0 940	799 118 616	to	8 640	818 459 641	to	9 670
762 304 144	to	4 170	773 009 419	to	9 430	799 133 191	to	3 220	818 926 273	to	6 320

818 950 351	to	0 380	821 903 731	to	3 910	825 472 171	to	2 200	828 539 316	to	9 340
818 962 492	to	2 530	821 927 841	to	7 850	826 042 898	to	2 920	828 539 341	to	9 370
819 032 341	to	2 730	822 505 801	to	5 830	826 226 644	to	6 670	828 732 331	to	2 390
819 127 054	to	7 080	822 703 442	to	3 470	826 582 951	to	3 430	828 807 781	to	7 840
819 278 540	to	8 670	822 900 991	to	1 020	826 720 201	to	0 230	828 830 952	to	0 963
819 544 681	to	4 740	822 925 951	to	6 100	827 005 671	to	5 830	828 939 781	to	0 050
819 928 441	to	8 650	823 284 931	to	4 990	827 287 861	to	7 950	829 002 721	to	2 870
820 034 406	to	4 430	823 293 031	to	3 210	827 291 502	to	1 520	829 005 301	to	5 540
820 070 761	to	1 540	823 556 011	to	6 100	827 575 381	to	5 470	829 080 241	to	0 330
820 191 342	to	1 360	824 078 341	to	8 370	827 609 085	to	9 100	829 160 986	to	1 000
820 274 856	to	4 880	824 156 325	to	6 340	827 619 811	to	9 840	829 176 841	to	6 930
820 600 171	to	0 230	824 511 252	to	1 270	827 883 511	to	3 600	829 471 561	to	1 590
821 172 241	to	2 360	824 588 281	to	8 370	828 160 441	to	0 530	829 561 065	to	1 080
821 229 661	to	9 720	825 140 397	to	0 460	828 376 201	to	6 260	829 566 481	to	6 510
821 229 743	to	9 780	825 409 651	to	9 680	828 441 602	to	1 630	829 569 931	to	9 960

— Criminal Investigations Group, U.S. Postal Inspection Service, 3-6-25

Verifying U.S. Postal Service Money Orders

Follow these steps to cash a Postal Service™ money order:

1. Check that the amount does not exceed the legal limit: \$1,000 for domestic, and \$700 for international Postal Service money orders.
2. Check that the proper security features are present:
 - When held to the light, a watermark of Benjamin Franklin is repeated from top to bottom on the left side.
 - When held to the light, a dark line (security thread) runs from top to bottom with the word “USPS” repeated.
 - When there is discoloration around the dollar amounts, this might indicate the amounts were changed.

These appear in Postal Service Notice 299, U.S. Postal Money Order Reference Card, or online at usps.com/shop/money-orders.htm.

3. If the money order seems suspicious, call the U.S. Postal Service Money Order Verification System at 866-459-7822.

Provide this information to local banks and retailers, as they also receive Postal Service money orders for cashing.

— Delivery and Retail Customer Service Operations, 3-6-25

Counterfeit Canadian Money Order Forms

Do Not Cash

To be posted and used by retail window employees. As directed, destroy previous notices. Destroy all interim notices when the numbers listed appear in the *Postal Bulletin*.

671,819,086	683,594,542	687,262,503
676,612,640	684,683,610	687,262,525
677,891,039	686,619,878	687,262,526
678,282,493	686,619,886	687,287,578
678,916,031	686,619,887	687,287,581
679,552,215	686,794,382	687,287,582
679,694,334	686,794,426	694,063,898
679,751,983	686,794,427	694,063,899
679,800,207	686,794,431	694,063,980
681,130,536	687,262,502	701,321,725
681,844,376		

— Criminal Investigations Group, U.S. Postal Inspection Service, 3-6-25

Toll-Free Number Available to Verify Canadian Money Orders

The Canada Post Corporation has a toll-free number that cashing agents can call to verify the validity of Canadian Postal Money Orders. The number is 800-563-0444.

This toll-free number is printed on the back of the Canadian Postal Money Orders.

— Criminal Investigations Group, U.S. Postal Inspection Service, 3-6-25

Shaker Design



X1111

X1111



Other Information

Overseas Military/Diplomatic Mail

Mail addressed to military and diplomatic post offices overseas is subject to certain conditions or restrictions of mailing regarding content, preparation, and handling. The APO/FPO/DPO table outlines these conditions by APO/FPO/DPO ZIP Codes™ through the use of footnoted mailing restrictions codes (see the [Restrictions](#) page following the table).

Acceptance clerks must use the table with the Retail System Software terminal to determine which APO/FPO/DPO ZIP Codes are active and which conditions of mailing apply.

The entries under “Changes” appear in bold in the following APO/FPO/DPO table:

Changes

APO/FPO/DPO	Action	Effective Date	See Restrictions
FPO AE 09266	Add C, F, F1, F2, U1, W, X	02/18/2025	A-B-C-C2-F-F1-F2-F3-R-S-U-U1-V-W-X-Z1
DPO AE 09278	Add C, C2	02/18/2025	A-B-C-C2-F-F3-I3-L-M-N-R-S-T-V-X-Z-Z1
DPO AE 09279	Add C, C2	02/18/2025	A-B-C-C2-E-E1-F-F3-I3-L-M-N-R-S-T-V-X-Z-Z1
DPO AE 09285	Add C2	02/18/2025	A-B-C-C2-E-E1-F1-F3-H-I3-L-M-N-R-S-T-V-X-Z-Z1
DPO AE 09287	Add C	02/18/2025	B-C-C2-E1-F1-F3-J-L-N-R-S-T-V-X-Z1
DPO AE 09290	Add C, C1, C2	02/18/2025	A-B-C-C1-C2-F1-F3-J-L-M-N-R-S-T-U2-V-X-Z1
APO AE 09316	Add C, C2	02/18/2025	A-B-C-C1-C2-E2-F-F1-F3-H1-I3-M-N-R-R1-S-T-V-Z-Z1
DPO AE 09806	Add C, S	02/18/2025	A-B-C-C1-C2-E2-F-F1-F3-H1-J-L-M-N-R-R1-S-T-V-Z1
APO AE 09807	Add C	02/18/2025	A-B-C-C1-C2-E2-F-F1-F3-H1-I3-M-N-R-R1-S-T-V-Z-Z1
APO AA 34013	Open	02/14/2025	B-C-C2-F-F1-F3-R-S-V
FPO AA 34061	Open	02/11/2025	B-C-C2-F-F1-F3-R-S-V
FPO AP 96578	Add Z1	02/18/2025	B-C-C2-F1-F3-H-J-N-R-S-Z1

We have eliminated “Not Active” entries from the table below to save space and paper.

APO/FPO/DPO Table

APO/FPO/DPO	See Restrictions	APO/FPO/DPO	See Restrictions	APO/FPO/DPO	See Restrictions	APO/FPO/DPO	See Restrictions
09002	A-B-C-C2-F-F3-H-N-R-S-V-Z1	09015	A-B-C-C1-C2-F-F1-F3-J-L-M-N-R-R1-S-V-Z1	09067	B-C-C2-D-E-F-F3-H-M-R-S-U	09116	A-B-C-C2-F-F3-H-N-R-S-V-Z1
09003	B-C-C2-D-E-F-F3-H-M-P-R-S	09016	B-C-C2-D-E-F1-F3-H-M-R-S-U	09068	B-C-C2-D-E-F3-H-R-S-U-Z1	09118	A-B-C-C2-F-F1-F3-M-N-R-R1-S-V-Z1
09004	B-C-C2-D-E-F3-H-M-R-S-U	09017	A-B-C-C2-F-F3-H-N-R-S-V-Z1	09069	A-B-C-C2-D-E-F3-H-N-R-S-U-V	09123	B-C-C2-D-E-F3-H-M-R-S-U-Z1
09005	B-C-C2-D-E-F-F3-H-M-P-R-S	09018	A-B-C-C2-F-F3-H-N-R-S-V-Z1	09079	B-C-C2-D-E-F-F3-H-M-R-S-U	09126	B-C-C2-F3-H-M-P-R-S-Z1
09006	B-C-C2-D-E-F-F3-H-M-R-S-U	09020	B-C-C2-D-E-F-F3-H-M-R-S-U	09094	B-C-C2-D-F3-H-M-P-R-S-Z1	09128	B-C-C2-D-E-F-F3-H-M-R-S-U
09008	A-B-C-C2-F-F3-H-N-R-S-V-Z1	09021	B-C-C2-D-E-F3-H-M-R-S-U-Z1	09095	B-C-C2-D-E-F-F3-H-M-R-S-U	09131	B-C-C2-D-E-F-F3-H-M-R-S-U
09009	B-C-C2-D-E-F3-H-M-R-S-U-Z1	09034	B-C-C2-D-E-F-F3-H-M-R-S-U	09096	B-C-C2-D-E-F-F3-H-M-R-S-U	09135	A-B-C2-F-F3-H-N-R-S-U-V-Z1
09010	B-C-C2-D-E-F-F3-H-M-R-S-U2	09044	B-C-C2-D-E-F-F3-H-R-S-U	09101	A-B-C-C2-F-F3-H-N-Q-R-S-V-Z-Z1	09136	B-C-C2-D-E-F-F3-H-M-P-R-S-U
09011	B-C-C2-D-E-F3-H-M-R-S	09046	B-C-C2-D-E-F-F3-H-M-R-S-U	09103	A-B-C-C2-F-F3-H-N-R-S-V-Z1	09138	B-C-C2-D-F-F3-H-M-R-S-U
09012	B-C-C2-D-E-F3-H-M-R-S-U-Z1	09049	B-C-C2-D-E-F-F3-H-M-R-S-U	09104	B-C-C2-D-F3-H-M-R-S-U-Z1	09140	B-C-C2-D-E-F-F3-H-M-R-S-U
09013	B-C-C2-D-E-F-F1-F3-H-M-R-S-U-Z1	09053	B-C-C2-D-E-F-F3-H-M-R-S-U	09107	B-C-C2-D-E-F-F3-H-M-R-S-U	09142	B-C-C2-D-E-F-F3-H-M-R-S-U
09014	B-C-C2-D-E-F3-H-M-P-R-S-U	09060	B-C-C2-D-E-F1-F3-H-M-N-R-S-U-Z1	09112	B-C-C2-D-E-F-F3-H-M-R-S-U	09154	B-C-C2-D-E-F-F3-H-M-R-S-U
				09114	B-C-C2-D-E-F-F3-H-M-R-S-U		

APO/ FPO/ DPO	See Restrictions	APO/ FPO/ DPO	See Restrictions	APO/ FPO/ DPO	See Restrictions	APO/ FPO/ DPO	See Restrictions
09160	B-C-C2-F1-F3-H-J-L-M-N-R-R1-S-T-U-V-X-Z1	09250	B-C-C2-D-E-F-F3-H-M-R-S-U	09294	B-C-C1-C2-E2-F1-F3-H1-L-N-R-R1-S-T-V-X-Z1	09357	A-B-C-C1-C2-F-F1-F3-M-R-S-U
09170	A-B-C-C2-F1-F3-J-L-M-N-R-R1-S-T-V-X-Z1	09261	B-C-C2-D-E-F3-H-M-N-R-S-U-V-Z1	09295	B-C-C1-C2-E2-F1-F3-H1-J-L-M-N-R-R1-S-T-V-X-Z1	09365	A-B-C-C1-E2-F-F3-H1-M-N-R-V-Z1
09171	A-B-C-C1-C2-E3-F1-F3-J-L-M-N-R-R1-S-T-V-X-Z1	09263	B-C-C2-D-E-F3-H-M-R-S-U	09296	A-B-C-C2-E1-F1-F3-L-N-R-S-T-V-X-Z1	09366	A-B-C-C1-C2-E2-F-F1-F3-H-H1-M-R-R1-S-V-Z1
09172	B-C-C2-D-E-F-F3-H-M-R-S-U	09264	B-C-C2-D-E-F-F3-H-M-R-S-U	09297	A-B-C-C2-E-E1-F1-F3-J-L-M-N-R-S-T-V-X-Z1	09401	B-C-C1-C2-F3-M-R-S-U-Z1
09173	B-C-C2-D-E-F-F3-H-M-R-S-U	09265	B-C-D-F-F1-H-J-L-M-N-R-S-T-U-V-Z1	09298	A-B-C-C2-E-E1-F-F3-I3-L-M-N-R-S-T-V-X-Z1	09403	B-C-C1-C2-F3-M-R-S-U-Z1
09174	B-C-C2-F1-F3-L-N-R-R1-S-T-V-Z1	09266	A-B-C-C2-F-F1-F2-F3-R-S-U-U1-V-W-X-Z1	09299	A-B-C-C2-E-E1-F1-F3-I3-L-M-N-R-S-T-V-X-Z1	09410	B-C-C2-F-F1-F3-N-R-S-U2
09175	A-B-C-C1-C2-E2-F1-F3-H1-J-L-M-N-R-R1-S-T-V-W-X-Z1	09276	A-B-F-F3-I3-L-M-N-R-S-T-V-X-Z1	09301	A-B-C-C1-C2-E2-F1-F3-H1-I3-L-M-N-R-R1-S-T-U4-V-X-Z1	09421	B-C-C1-C2-F3-M-R-S-U-Z1
09176	A-B-C-C2-F1-F3-J-L-M-N-R-R1-S-T-V-X-Z1	09277	A-B-C-C2-E-E1-E2-F1-F3-L-N-R-S-T-V-X-Z1	09304	A-B-C-C1-C2-F-F1-F3-H-M-N-R-S-V-Z1	09424	B-C-C2-F1-F3-M-N-R-S-U-Z1
09177	B-C-C2-D-E-F-F3-H-M-R-S-U	09278	A-B-C-C2-F-F3-I3-L-M-N-R-S-T-V-X-Z1	09305	A-B-C-C1-C2-E2-F1-F3-H1-I3-M-N-R-R1-S-T-V-Z1	09447	B-C-C1-C2-F3-M-R-S-U-V-Z1
09178	B-C1-C2-E2-F1-F3-I3-L-M-N-R-S-T-V-X-Z1	09279	A-B-C-C2-E-E1-F-F3-I3-L-M-N-R-S-T-V-X-Z1	09306	A-B-C-C1-C2-E2-F1-F3-H1-R-R1-S-U2-V-Z1	09454	B-C-C1-C2-F3-M-R-S-U-V-Z1
09179	A-B-C-C1-C2-F1-F3-J-L-M-N-R-R1-S-T-V-X-Z1	09280	A-B-C-C1-C2-E-E2-F1-F3-H-I3-L-M-N-R-S-T-V-W-X-Z1	09307	B-C-C2-F-F3-N-R-R1-S-Z1	09456	B-C-C1-C2-F3-M-N-R-S-U-V-Z1
09180	B-C-C2-D-E-F-F3-H-M-R-S-U	09281	A-B-C-C1-C2-E2-E3-F1-F3-H-H1-I3-J-L-M-N-R-R1-S-T-V-X-Z1	09309	A-B-C-C1-C2-E-E2-F-F1-F3-H-H1-M-N-R-R1-S-V-Z1	09459	B-C-C1-C2-F3-M-R-S-U-Z1
09181	A-B-B2-C-C2-E1-F1-F3-J-L-M-N-R-S-T-V-V1-X-Z1	09282	A-B-C-C1-C2-E2-E3-F1-F3-H-H1-J-L-M-N-R-R1-S-T-V-X-Z1	09310	A-B-C-C1-E2-F1-F3-H1-I3-L-M-N-R-R1-S-T-U4-V-Z1	09461	B-C-C1-C2-F3-M-P-R-S-U-Z1
09186	B-C-C2-D-E-F-F3-H-M-P-R-S-U	09283	A-B-C-C2-E-E1-F1-F3-L-M-N-R-S-T-V-X-Z1	09311	A-B-C1-C2-E2-F-F1-F3-H1-I3-L-M-N-R-R1-S-T-U4-V-Z1	09463	B-C-C1-C2-F3-M-R-S-U-Z1
09203	A-B-C-C1-C2-F1-F3-I3-J-L-M-N-R-R1-S-T-V-X-Z1	09284	A-B-C-C2-F1-F3-I3-L-M-N-R-S-T-V-Z1	09312	A-B-C-C1-E2-F1-F3-H1-I3-L-M-N-R-R1-S-T-U4-V-X-Z1	09464	B-C-C1-C2-F3-M-R-S-U-Z1
09204	B-C-F3-M-N-R-S-V-Z1	09285	A-B-C-C2-E-E1-F1-F3-H-I3-L-M-N-R-S-T-V-X-Z1	09315	A-B-C1-E2-F-F3-N-R-R1-S-V-Z1	09467	B-C-C2-E-E1-F1-F3-J-L-M-N-R-S-T-V-W-X-Z1
09205	A-B-C-C2-E2-F-F3-M-N-R-S-T-V-X	09287	B-C-C2-E1-F1-F3-J-L-N-R-S-T-V-X-Z1	09316	A-B-C-C1-C2-E2-F-F1-F3-H1-I3-M-N-R-R1-S-T-V-Z1	09468	B-C-C1-C2-F3-M-R-S-U-Z1
09211	B-C-C2-D-E-F-F3-H-M-P-R-S-U	09288	A-B-C-C1-C2-E2-F1-F3-H-H1-J-L-M-N-R-R1-S-T-V-X-Z1	09321	A-B-C-C1-C2-E2-F-F3-H1-M-N-R-R1-S-V-Z1	09469	B-C-C1-C2-F3-R-S-U-Z1
09213	B-C-C2-F1-F3-H-J-L-M-N-R-R1-S-T-U-V-X-Z1	09289	B-E2-F1-F3-H1-J-L-M-N-R-R1-S-T-U2-V-X-Z1	09330	A-B-C1-C2-D-E-E2-F-F1-F3-H-H1-M-R-R1-S-V-Z1	09470	B-C-C1-C2-F3-M-R-S-U-Z1
09214	B-C-C2-D-E-F3-H-M-R-S-U-Z1	09290	A-B-C-C1-C2-F1-F3-J-L-M-N-R-S-T-U2-V-X-Z1	09333	A-B-C-C1-C2-E2-F-F1-F3-H1-I3-M-N-R-R1-S-V-V1-Z1	09487	A-B-C-C1-C2-E2-F1-F3-I3-L-M-N-R-R1-S-T-V-W-X-Z1
09216	B,C,F1,F3,M,N,R,S,V,Z1	09291	B-C-C1-C2-E2-F1-F3-H1-L-N-R-R1-S-T-V-X-Z1	09343	A-B-C1-C2-F-F3-M-N-R-R1-S-V-Z1	09488	A-B-C-C1-C2-E2-F1-F3-J-L-M-N-R-S-T-V-W-X-Z1
09227	B-C-C2-D-E-F-F3-H-M-R-S-U	09292	A-B-C-C2-E-E2-E3-F1-F3-H-H1-J-L-M-N-R-R1-S-T-V-X-Z1	09344	A-B-C1-C2-F-F3-M-N-R-R1-S-V-Z1	09489	A-B-C-C1-C2-E2-F1-F3-L-M-N-R-R1-S-T-V-W-X-Z1
09240	A-B-C1-C2-F-F3-H-N-R-S-V	09293	A-B-C-C1-C2-E-E2-F1-F3-I3-L-M-N-R-S-T-V-X-Z1	09348	A-B-C-C1-C2-E2-F1-F3-H1-I3-M-N-R-R1-S-T-V-Z1	09490	A-B-C1-C2-E2-F-F1-F3-H1-J-L-M-N-R-R1-S-T-V-X-Z1
09241	A-B-C-C2-F3-N-R-S-U-Z1					09491	A-B-C-C1-C2-E2-F1-F3-H1-J-L-M-N-R-R1-S-T-V-X-Z1
09242	A-B-C-C1-C2-F-F3-H-N-R-S-V					09494	B-C-C1-C2-F3-M-R-S-U-Z1
						09498	B-C-C1-C2-F1-F3-J-L-M-N-R-R1-S-T-V-X-Z1

APO/ FPO/ DPO	See Restrictions	APO/ FPO/ DPO	See Restrictions	APO/ FPO/ DPO	See Restrictions	APO/ FPO/ DPO	See Restrictions
09501	B-V	09568	B-C-C2-F-F1-F3-R-R1-S-V	09610	B-C-C2-F-F1-F3-M-R-S-U-V-Z1	09709	B-C-C1-C2-E2-F1-F3-H-H1-J-L-N-R-R1-S-T-V-X-Z1
09502	B-V	09569	B-C-C2-E2-E3-F-F1-F3-R-R1-S-V-Z1	09613	B-C-C2-F-F3-N-R-S-U-V	09710	B-C-C1-F-F1-J-L-M-N-R-R1-T-U-V-Z1
09503	B-F-F1-R-R1-V	09570	B-C-C2-F-F1-F3-R-R1-S-V	09614	A-B-C-C1-C2-E2-F1-F3-H1-J-L-M-N-R-R1-S-T-U-V-X-Z1	09711	A-B-C-C2-E2-F-F1-F3-M-N-R-S-T-V-X
09504	B-V	09573	B-C-C2-E2-E3-F-F1-F3-R-R1-S-V-Z1	09618	B-C-C2-F-F3-R-S-U-Z1	09712	A-B-C2-C2-F-F3-H-R-S-U-V-Z1
09505	B-V	09575	B-C-C2-F-F1-F3-R-R1-S-V	09620	B-C-C2-F-F3-R-S-U-V-Z1	09714	B-C-C1-C2-F-F3-M-R-R1-S-U
09506	B-C-C2-F-F3-R-S-V	09576	B-C-C2-F-F1-F3-R-R1-S-V	09621	B-C-C2-F-F3-R-S-U-Z1	09715	B-F-F1-J-L-M-N-R-T-V-Z1
09507	B-V	09577	B-C-C2-F-F1-F3-R-R1-S-V	09622	B-C-C2-F-F3-R-S-U-Z1	09716	B-C-C2-F1-F3-J-L-M-N-R-R1-S-T-V-X-Z1
09508	B-C-C2-F-F3-R-R1-S-V	09578	B-C-C2-F-F1-F3-R-R1-S-V	09623	B-C-C2-F-F3-R-S-U-V-Z1	09717	A-B-C-C2-F3-M-R-S-V-W-Z1
09509	B-C-C2-F-F3-R-R1-S-V	09579	B-C-C2-F-F1-F3-R-R1-S-V	09624	B-C-C2-F1-F3-I3-L-M-N-R-R1-S-T-U-V-X-Z1	09718	B-F-F1-J-L-M-N-R-T-U-V-Z1
09510	B-C-C2-F-F3-R-R1-S-V	09581	B-C-C2-F-F1-F3-R-R1-S-V	09625	B-C-C2-F-F3-N-R-S-U-Z1	09719	B-C-C2-D-F3-M-R-S-U-V-Z1
09511	B-C-C2-F-F3-R-R1-S-V	09582	B-C-C2-F-F1-F3-R-R1-S-V	09627	B-C-C2-F-F3-R-S-U-V-Z1	09720	B-C2-F3-M-R-S-U-V-Z1
09512	B-C-C2-F-F1-F3-R-R1-S-V	09583	B-C-C2-F-F1-F3-R-R1-S-V	09630	B-C-C2-F-F3-R-S-U-V	09722	A-B-C-C2-F-F3-H-N-R-S-V-Z-Z1
09513	B-C-C2-F-F1-F3-R-R1-S-V	09586	B-C-C2-F-F1-F3-R-R1-S-V	09633	B-C-C2-D-F-F3-M-R-S-U-U1-U2-U3-V-Z1	09723	B-C-C2-F1-F3-J-L-M-N-R-R1-S-T-V-X-Z1
09514	B-C-C2-F-F1-F3-R-R1-V	09587	B-C-C2-F-F1-F3-R-R1-S-V	09634	A-B-C-C2-F-F3-M-N-R-S-V	09724	B-C-C1-C2-F-F3-M-R-R1-S-U
09516	B-C-C2-F-F1-F3-R-R1-S-V	09588	B-C-C2-F-F1-F3-R-R1-S-V	09636	B-C-C2-F-F3-R-S-U-V-Z1	09725	A-B-C-C2-F-F3-H-N-R-S-V-V1-Z-Z1
09517	B-C-C2-F-F1-F3-R-R1-S-V	09590	B-C-C2-F-F1-F3-R-R1-S-V	09642	B-C-C2-F1-F3-J-L-M-N-R-S-T-U-V-X	09726	B-F-F1-J-L-M-N-R-T-U-V-Z1
09518	B-C-C2-F-F1-F3-R-R1-S-V	09591	B-C-C2-F-F1-F3-R-R1-S-V	09643	B-C-C2-F3-M-R-S-U-V-Z1	09727	A-B-C-C1-C2-F1-F3-J-L-M-N-R-R1-S-T-V-X-Z1
09523	B-C-C2-F-F1-F3-R-R1-S-V	09592	B-C-C2-F-F1-F3-R-R1-S-V	09645	B-B2-C-C1-C2-E1-E2-F-F1-F3-M-R-S-U-X-Z1	09728	A-B-C-C1-C2-F1-F3-J-L-M-N-R-R1-S-T-V-X-Z1
09524	B-C-C2-F-F1-F3-R-R1-S-V	09594	B-C-C1-C2-F-F1-F3-R-R1-S-V	09647	B-C-C2-E1-F1-F3-M-N-R-S-U-X-Z1	09729	B-C-C2-F-F3-N-R-R1-S-U-V-Z1
09532	B-C-C2-F-F1-F3-R-R1-S-V	09595	B-C-C2-F-F1-F3-I3-J-R-R1-S-V-V1-Z1	09648	B-C-C1-C2-E1-F1-F3-M-N-R-S-U-V-X-Z1	09730	A-B-C-C1-C2-F1-F3-J-L-M-N-R-R1-S-T-V-X-Z1
09533	B-V	09596	B-F-F1-R-R1-V	09649	B-C-C2-E1-F1-F3-M-N-R-S-U-X-Z1	09731	A-B-C-C1-C2-F1-F3-J-L-M-N-R-R1-S-T-V-X-Z1
09534	B-F-F1-F3-R-R1-S-V	09599	B-F-F1-R-R1-V	09701	A-B-C-C1-C2-F1-F3-J-L-M-N-R-R1-S-T-V-X-Z1	09732	B-F-F3-N-S-V-Z-Z1
09541	A-B-C-F-F3-M-N-S-V-Z1	09600	B-B2-C-C1-C2-E1-E2-F-F1-F3-M-R-S-U-X-Z1	09704	B-C-C2-F-F1-F3-R-R1-S-U2-V	09733	B-F-F3-N-R-S-V-Z
09542	A-B-C-F-F3-M-N-S-V-Z1	09602	B-C-C2-F-F1-F3-N-R-S-U-V	09705	B-C-C1-C2-F1-F3-M-R-R1-S-U	09734	A-B-C-C1-C2-F1-F3-I3-J-L-M-N-R-R1-S-T-V-X-Z1
09543	A-B-C-F-F3-M-N-S-V-Z1	09603	B-C-C2-F-F1-F3-R-S-U-V-Z1	09706	B-C-C2-F3-M-N-R-S-U-V-Z1	09735	B-F3-N-R-S-V-Z-Z1
09544	A-B-C-F-F3-M-N-S-V-Z1	09604	B-C-C2-F-F1-F3-P-R-S-U-V-Z1	09707	B-C-C2-F1-F3-J-L-M-N-R-R1-S-T-V-X-Z1	09736	A-B-C-C1-C2-F1-F3-J-L-M-N-R-R1-S-T-V-X-Z1
09545	A-B-C-F-F3-M-N-S-V-Z1	09605	B-C-C2-D-F-F1-F3-H-M-P-R-S-V	09708	B-C-C1-C2-F-F3-M-R-R1-S-U	09737	A-B-C-C1-C2-F1-F3-I3-J-L-M-N-R-R1-S-T-V-W-X-Y-Z-Z1
09550	B-C-C2-F-F1-F3-R-R1-S-V	09606	B-C-C2-D-F-F3-H-M-R-S-U-V				
09554	B-C-C2-F-F1-F3-R-R1-S-V	09608	B-C-C2-F-F3-N-R-S-U-V-Z1				
09556	B-F-F1-R-R1-V	09609	B-C-C2-F-F3-R-S-U-V				
09564	B-C-C2-F-F1-F3-R-R1-S-V						
09565	B-C-C2-F-F1-F3-R-R1-S-V						
09566	B-C-C2-E2-E3-F-F1-F3-R-R1-S-V						
09567	B-C-C2-E2-E3-F-F1-F3-R-R1-S-V						

APO/ FPO/ DPO	See Restrictions	APO/ FPO/ DPO	See Restrictions	APO/ FPO/ DPO	See Restrictions	APO/ FPO/ DPO	See Restrictions
09738	A-B-C-C1-C2-F1-F3-J-L-M-N-R-R1-S-T-V-X-Z1	09802	A-B-C-C2-D-F1-F3-H-H1-I3-L-M-N-R-R1-S-T-V-W-X-Z-Z1	09825	A-B-C-C1-C2-F1-F3-J-L-M-N-R-R1-S-T-V-X-Z1	09858	A-B-C-C1-C2-E2-E3-F1-F3-H-H1-J-M-N-R-R1-S-U-V-Z1
09739	A-B-C-C1-C2-F1-F3-J-L-M-N-R-R1-S-T-V-X-Z1	09803	A-B-C-C2-E-E2-E3-F1-F3-H-H1-J-M-N-R-R1-S-U-V-Z1	09826	A-B-C-C1-C2-E1-E2-E3-F1-F3-J-L-M-N-R-R1-S-T-V-W-X-Z1	09859	B-C-C1-C2-E2-E3-F1-F3-H1-R-R1-S-U-Z1
09741	A-B-C-C1-C2-E2-F1-F3-H1-J-L-M-N-R-R1-S-T-V-W-X-Y-Z1	09804	A-B-C-C2-F-F1-F3-M-N-R-S-V-Z1	09827	A-B-F-F1-J-L-M-N-R-T-V-Z1	09860	A-B-C-C2-F1-F3-J-L-M-N-R-R1-S-T-V-X-Z1
09742	A-B-C-C1-C2-F1-F3-J-L-M-N-R-R1-S-T-V-X-Z1	09805	B-C-C2-E2-E3-F-F1-F3-R-R1-S-Z1	09828	A-B-C-C1-C2-F1-F3-I3-L-M-N-R-R1-S-T-V-X-Z-Z1	09862	A-B-C-C2-F1-F3-I3-L-M-N-R-R1-S-T-V-X-Z-Z1
09743	A-B-C-C2-F-F3-H-N-R-S-V-Z-Z1	09806	A-B-C-C1-C2-E2-F-F1-F3-H1-J-L-M-N-R-R1-S-T-V-Z1	09829	B-C-N-R-V-Z1	09864	A-B-C-C1-C2-E2-F1-F3-L-M-N-R-R1-S-T-V-W-X-Z1
09744	A-B-C-C1-C2-F1-F3-J-L-M-N-R-R1-S-T-V-X-Z1	09807	A-B-C-C1-C2-E2-F-F1-F3-H1-I3-M-N-R-R1-S-T-V-Z-Z1	09830	B-C-F-F1-F3-J-L-M-N-R-R1-S-T-V-Z1	09867	A-B-C-C1-C2-E2-F1-F3-I3-L-M-N-R-R1-S-T-V-W-X-Z-Z1
09745	A-B-C2-F-F1-F3-M-N-R-R1-S-V-Z1	09808	A-B-C-C1-C2-E2-F1-F3-H-H1-J-L-M-N-R-R1-S-T-V-X-Z1	09831	B-C-C1-C2-F1-F3-J-L-M-N-R-R1-S-T-V-X-Z1	09869	A-B-C-C1-C2-E2-F1-F3-L-M-N-R-R1-S-T-V-W-X-Z1
09748	A-B-C-C1-C2-F1-F3-J-L-M-N-R-R1-S-T-V-X-Z1	09809	B-C-C1-C2-E3-F1-F3-J-L-M-N-R-S-T-V-X-Z1	09832	A-B-C-C1-C2-E2-E3-F1-F3-H-H1-J-M-N-R-R1-S-V-Z1	09870	A-B-C-C1-C2-E2-F1-F3-H1-I3-L-M-N-R-R1-S-T-U4-V-X-Z-Z1
09749	A-B-C2-F-F3-H-N-R-S-U-V-Z1	09810	A-B-C2-F-F1-F3-N-R-S-V-Z1	09833	A-B-C-C1-C2-E2-E3-F1-F3-R-R1-S-U-Z1	09873	A-B-C-C1-C2-E2-F1-F3-H1-I3-L-M-N-R-R1-S-T-U-U4-V-X-Z-Z1
09750	A-B-C-C1-C2-F1-F3-J-L-M-N-R-R1-S-T-V-X-Z1	09811	A-B-C-C2-E-E2-E3-F1-F3-H-H1-J-M-N-R-R1-S-U-V-Z1	09836	A-B-C-C1-C2-F1-F3-J-L-M-N-R-R1-S-T-V-X-Z1	09874	A-B-C-C1-C2-E2-F1-F3-H1-I3-L-M-N-R-R1-S-T-U-U4-V-X-Z-Z1
09751	B-C-C2-D-E-F-F3-H-M-R-S-U	09812	B-E2-E3-F-F1-I-J-L-N-R-T-U-V-Z-Z1	09837	B-E2-E3-F1-F3-R-S-V-Z1	09875	A-B-C-C1-C2-E2-F1-F3-H1-I3-L-M-N-R-R1-S-T-U-U4-V-X-Z-Z1
09752	B-C-C2-D-F-F3-H-R-S-U	09813	A-B-C-C1-C2-E2-E3-F1-F3-J-L-N-R-R1-S-T-V-X-Z1	09838	B-C-C2-E2-E3-F-F1-F3-R-S-U-Z1	09877	A-B-C-C2-E-E2-E3-F1-F3-H-H1-J-M-N-R-R1-S-U-V-Z1
09753	A-B-C-C1-C2-D-E-F1-F3-H-M-N-R-S-V-W-Z1	09814	B-C-C2-E2-E3-F1-F3-I3-J-L-M-N-R-R1-S-T-V-X-Z-Z1	09842	A-B-C-C1-C2-E3-F1-F3-J-L-M-N-R-R1-S-T-V-X-Z1	09880	A-B-C-C1-C2-E2-F1-F3-H1-J-L-N-R-R1-S-T-U-V-Z1
09754	A-B-C-C2-F-F3-H-N-R-S-V-Z-Z1	09815	A-B-C-C2-E-E2-E3-F1-F3-H-H1-J-M-N-R-R1-S-U-V-Z1	09844	A-B-C-C1-C2-F1-F3-J-L-M-N-R-R1-S-T-V-X-Z1	09887	A-B-C-C2-E-E2-E3-F1-F3-H-H1-J-M-N-R-R1-S-U-V-Z1
09755	A-B-C-C1-C2-D-F-F1-F3-J-L-M-N-Q-R-R1-S-T-V-Z1	09816	A-B-C-C1-C2-E2-E3-F1-F3-J-L-M-N-R-R1-S-T-V-X-Z1	09845	A-B-C-C1-C2-E3-F1-F3-J-L-M-N-R-R1-S-T-V-X-Z1	09888	A-B-C-C1-C2-E2-F1-F3-H1-J-L-N-R-R1-S-T-U-V-Z1
09756	A-B-E3-F-F1-F3-J-L-N-Q-R-R1-S-T-V-Z1	09817	A-B-C-C1-C2-E2-E3-F1-F3-H-H1-J-L-M-N-R-R1-S-T-V-X-Z1	09847	B-C-C2-F1-F3-J-L-M-N-R-R1-S-T-V-X-Z1	09892	A-B-C-C1-C2-E2-F1-F3-J-L-M-N-R-R1-S-T-V-X-Z1
09759	A-B-C-C1-C2-E2-F1-F3-J-L-M-N-R-R1-S-T-V-X-Z1	09818	A-B-C-C2-F-F3-M-R-S-V-Z1	09848	A-B-C2-F-F3-M-R-S-V-Z1	09895	A-B-C-C1-C2-E2-F1-F3-J-L-M-N-R-S-T-V-W-X-Z1
09761	B-C-C2-F-F1-F3-M-R-R1-S-V-Z1	09819	A-B-C-C1-C2-E2-F-F1-F3-H-H1-M-R-R1-S-V-Z1	09853	B-C-C1-C2-E2-F-F1-F3-H1-N-R-R1-S-U2-V	09902	A-B-C-C1-C2-E2-F-F3-H1-M-R-R1-S-V-Z1
09762	A-B-C-C1-E3-F1-F3-J-L-M-N-R-R1-S-T-V-Y-Z1	09820	A-B-C-C2-F1-F3-H-H1-J-L-M-N-R-R1-S-T-V-X-Z1	09854	A-B-C-C1-C2-F1-F3-J-L-M-N-R-R1-S-T-V-X-Z1	09903	B-C-C1-C2-E2-F1-F3-N-R-S-V-Z1
09769	A-B-C-C1-E3-F1-F3-J-L-M-N-R-R1-S-T-V-Y-Z1	09821	A-B-C-C2-F-F3-N-R-S-V-Z1	09855	A-B-C-C1-C2-E2-F-F1-F3-H1-M-R-R1-S-U2-V-Z1	09904	B-C-C1-C2-E2-F1-F3-N-R-S-V-Z1
09777	A-B-C-C1-C2-E1-F1-F3-J-L-M-N-R-R1-S-T-V-X-Z1	09822	A-B-C-C2-F-F3-M-R-S-V-Z1	09856	B-C-C1-C2-F-F1-F3-H-H1-J-L-M-N-S-T-V-Z1	09905	A-B-C-C1-C2-E2-F-F3-H1-M-R-R1-S-V-Z1
09780	A-B-C2-F-F3-H-N-R-S-V	09823	A-B-C-C1-C2-F1-F3-J-L-M-N-R-R1-S-T-V-X-Z1	09857	A-B-C-C2-E2-F1-F3-I3-L-M-N-R-R1-S-T-V-X-Z-Z1	09974	B-C-C2-F1-F3-J-L-M-N-R-S-T-U2-V-X-Z1
09801	A-B-C1-E2-F-F3-H1-M-N-R-R1-S-V-Z1	09824	A-B-C-C2-F-F3-M-R-S-V-Z1				

APO/ FPO/ DPO	See Restrictions	APO/ FPO/ DPO	See Restrictions	APO/ FPO/ DPO	See Restrictions	APO/ FPO/ DPO	See Restrictions
09975	B-C-C2-F1-F3-I3-L-M-N-R-S-T-U2-V-X-Z-Z1	34024	B-C-C1-C2-F1-F3-J-L-M-N-R-R1-S-T-V-X-Z1	34073	B-C-C2-E1-F1-F3-J-L-M-N-R-S-T-V-X-Z1	96215	A-B-C-C2-F-F1-F3-M-R-S-U
09976	B-C-C2-F1-F3-J-L-M-N-R-S-T-U2-V-X-Z1	34025	B-C-C2-F1-F3-J-L-M-N-R-S-T-U2-V-X-Z1	34078	B-F1-F3-N-R-S-V-Z1	96218	A-B-C-C2-F-F1-F3-M-R-S-U
09977	B-C-C2-F1-F3-J-L-M-N-R-S-T-U2-V-X-Z1	34030	B-C-C1-C2-F1-F3-J-L-M-N-R-R1-S-T-V-X-Z1	34080	B-F-F1-R-R1-V	96224	A-B-C-C2-F-F1-F3-M-R-S-U
09978	B-C-C2-D-E1-F-F1-F3-H-H1-M-N-R-R1-S-T-X-Z1	34031	B-C-C1-C2-F1-F3-J-L-M-N-R-R1-S-T-V-X-Z1	34081	B-F-F1-R-R1-V	96251	A-B-C-C2-F-F1-F3-M-R-S-U
09980	B-C-C1-C2-F1-F3-J-L-M-N-R-R1-S-T-V-X-Z1	34032	B-C-C1-C2-F1-F3-J-L-M-N-R-R1-S-T-V-X-Z1	34082	B-F-F1-R-R1-V	96257	A-B-F-F1-F3-S-U
09981	B-C-C1-C2-F1-F3-J-L-M-N-R-R1-S-T-V-X-Z1	34033	B-C-C1-C2-F1-F3-I3-L-M-N-R-S-T-V-X-Z1	34083	B-F-F1-R-R1-V	96258	B-C-C2-F- F1-F3-M-P-R-S
09982	B-C-C1-C2-F1-F3-J-L-M-N-R-R1-S-T-V-X-Z1	34034	B-C-C1-C2-F1-F3-I3-L-M-N-R-R1-S-T-V-X-Z1	34084	B-F-F1-R-R1-V	96260	A-B-C-C2-F- F1-F3-M-R-S-U
09983	B-C-C1-C2-F1-F3-J-L-M-N-R-R1-S-T-V-X-Z1	34035	B-C-C1-C2-F1-F3-H-J-L-M-N-R-R1-S-T-V-X-Z1	34085	B-C-C1-C2-E2-E3-F-F1-F3-H1-R-R1-S-T-V-V1	96262	A-B-C-C2-F-F1-F3-R-S-U-V-Z1
09984	B-C-C1-C2-F1-F3-J-L-M-N-R-R1-S-T-V-X-Z1	34036	B-C-C1-C2-F1-F3-J-L-M-N-R-R1-S-T-V-X-Z1	34086	B-C-C1-C2-E2-E3-F-F1-F3-H1-J-R-R1-S-T-V-V1	96264	A-B-C-C2-F1-F3-R-S-U
34001	A-B-C-C1-C2-F1-F3-J-L-M-N-R-R1-S-T-V-X-Z1	34037	B-C-C1-C2-F1-F3-H-J-L-M-N-R-R1-S-T-V-X-Z1	34087	B-C-C2-E2-F-F1-F3-R-R1-S-V	96266	A-B-C-C2-F1-F3-R-S-U
34002	B-C-C1-C2-F1-F3-J-L-M-N-R-R1-S-T-V-X-Z1	34038	B-C-C1-C2-F1-F3-I3-L-M-N-R-R1-S-T-V-X-Z1	34088	B-C-C2-F-F1-F3-R-R1-S-V	96269	A-B-C-C2-F1-F2-F3-R-S-U-Z1
34004	B-C-C1-C2-F1-F3-J-L-M-N-R-R1-S-T-V-X-Z1	34039	B-C-C1-C2-F1-F3-J-L-M-N-R-R1-S-T-V-X-Z1	34089	B-C-C2-F-F1-F3-R-R1-S-V	96271	B-C-C2-F-F1-F3-M-P-R-S
34007	B-F-F1-H-J-M-N-R-R1-V-Z1	34040	B-C-C1-C2-F1-F3-J-L-M-N-R-R1-S-T-V-X-Z1	34090	B-C-C2-F-F1-F3-R-R1-S-V	96273	B-C-C2-F-F1-F3-M-R-S-U
34008	B-C-C1-C2-D-E1-F1-F3-H-H1-J-L-M-N-R-R1-S-T-V-X-Z	34041	B-C-C1-C2-F1-F3-J-L-M-N-R-R1-S-T-V-X-Z1	34091	B-C-C2-E2-E3-F-F1-F3-R-R1-S-V-Z1	96275	A-B-C-C2-F-F1-F3-M-R-S-U
34009	B, C, C2, F, F1, F3, R, S, V	34042	A-B-C-F-F1-F3-M-N-R-S-U-V-W-Z1	34092	B-C-C2-F-F1-F3-R-R1-S-V-Z1	96276	A-B-C-C2-F1-F3-R-S
34010	B-C-C2-F-F1-F3-R-S-V	34043	B-C-C1-C2-F1-F3-J-L-M-N-R-R1-S-T-V-X-Z1	34093	B-C-C2-F-F1-F3-R-R1-S-V	96278	A-B-C-C2-F1-F3-R-S-U
34011	B-C-C1-C2-E2-F1-F3-J-L-M-N-R-R1-S-T-V-X-Z1	34044	A-B-C-F-F1-F3-M-N-R-S-U-V-W-Z1	34094	B-F-F1-F3-R-R1-S-V	96283	A-B-F-F1-F3-S-U
34013	B-C-C2-F-F1-F3-R-S-V	34045	B-C-C1-C2-F1-F3-J-L-M-N-R-R1-S-T-V-X-Z1	34095	B-F-F1-R-R1-V	96284	A-B-C-C2-F- F1-F3-M-R-S-U
34020	B-C-C1-C2-F1-F3-J-L-M-N-R-R1-S-T-V-X-Z1	34055	B-C-C1-C2-F1-F3-J-L-M-N-R-R1-S-T-V-X-Z1	96201	A-B-F-F1-F3-M-R-S-U	96297	A-B-C-C2-F-F1-F3-M-R-S-U
34021	B-C-C1-C2-F1-F3-J-L-M-N-R-R1-S-T-V-X-Z1	34058	B-C2-F-F1-F2-F3-R-R1-S-V-Z1	96202	A-B-C-C2-F-F1-F3-M-R-S	96301	A-B-C-C2-F-F3-M-N-R-S-U2-W
34022	B-C-C1-C2-F1-F3-J-L-M-N-R-R1-S-T-V-X-Z1	34061	B-C-C2-F-F1-F3-R-S-V	96203	A-B-F-F1-F3-M-R-S-U	96303	B-C-C1-C2-F1-F3-H-J-L-M-N-R-S-T-V-W-X-Z1
34023	B-C-C1-C2-F1-F3-J-L-M-N-R-R1-S-T-V-X-Z1	34066	B-C-C1-C2-F1-F3-I3-J-L-M-N-R-R1-S-T-V-X-Z1	96204	A-B-C-C2-F-F1-F3-M-R-S-U2	96306	B-F-F1-F2-F3-H-M-R-S-W-Z1
		34067	B-C-C1-C2-F1-F3-J-L-M-N-R-R1-S-T-V-X-Z1	96205	B-C-C2-F-F1-F3-M-P-R-S-U	96309	B-C-C2-F-F1-F3-M-N-R-S-V-W
		34068	B-C-C1-C2-F1-F3-J-L-M-N-R-R1-S-T-V-X-Z1	96206	A-B-C-C2-F-F1-F3-M-R-S-U	96310	B-C-C2-F-F3-M-R-S-W
		34069	B-C-C1-C2-F1-F3-I3-J-L-M-N-R-R1-S-T-V-X-Z1	96207	A-B-F-F1-F3-M-R-S-U-V	96311	B-C-C2-F-F3-M-R-S-W
		34071	A-B-C-C2-F1-F3-I3-L-M-N-R-S-T-V-W-X-Z1	96208	A-B-C-C2-F-F1-F3-M-R-S-U	96315	B-C-C2-F-F3-M-R-S-W
		34072	B-C-C2-F1-F3-J-L-M-N-R-S-T-V-X-Z1	96209	A-B-C-C1-C2-F1-F3-J-L-M-N-R-S-T-U-V-X-Z1	96319	B-C-C2-F3-M-R-S-W
				96210	A-B-C-C1-C2-F1-F3-I3-L-M-N-R-R1-S-T-V-X-Z1	96321	B-F-F1-F2-F3-H-M-R-S-W-Z1
				96212	B-F-F1-F2-H-M-W-Z1	96322	B-F-F1-F2-F3-H-M-R-S-W-Z1
				96213	A-B-C-C2-F1-F3-N-R-S	96326	B-C-C2-F-F3-M-R-S-W
				96214	A-B-C-C2-F1-F3-N-R-S-U	96328	B-C-C2-F3-M-R-S-W

APO/ FPO/ DPO	See Restrictions	APO/ FPO/ DPO	See Restrictions	APO/ FPO/ DPO	See Restrictions	APO/ FPO/ DPO	See Restrictions
96331	A-B-C-C2-F-F1-F3-J-L-M-N-R-S-U2-W	96503	B-C-C2-D-E1-E2-F-F1-F3-H-H1-M-N-R-S-T-Z1	96554	A-B-C-C1-C2-F1-F3-H-J-L-M-N-R-R1-S-T-V-X-Z1	96660	B-C-C2-F-F1-F3-R-R1-S-V
96336	B-C-C2-F3-M-R-S-V-W	96504	A-B-C-C1-C2-F1-F3-I3-L-M-N-R-R1-S-T-V-W-X-Z-Z1	96555	A-B-C-C2-F-F1-F3-M-R-S-U2-V	96661	B-C-C2-F-F1-F3-R-R1-S-V
96337	B-C-C2-F-F1-F3-M-R-R1-S-W	96505	A-B-C-C1-C2-F1-F3-I3-L-M-N-R-R1-S-T-V-W-X-Z-Z1	96557	A-B-C-C2-F-F1-F3-M-R-S-U2-V	96662	B-C-C2-F-F1-F3-R-R1-S-V
96338	A-B-C-C2-F-F3-M-R-S-U2-W	96506	B-C-C2-D-E1-E2-F-F1-F3-H-H1-M-N-R-S-T-Z1	96562	A-B-C-C1-C2-D-E2-E3-F1-F3-H-H1-I3-L-M-N-R-R1-S-T-V-X-Z-Z1	96663	B-C-C2-F-F1-F3-R-R1-S-V
96339	A-B-C-C2-F-F3-M-N-R-S-U2-W	96507	A-B-C-C1-C2-F1-F3-H-J-L-M-N-R-S-T-V-X-Z1	96577	A-B-C2-F-F3-H-M-N-R-S-U	96664	B-C-C2-F-F1-F3-R-R1-S-V
96343	A-B-C-C2-F-F3-M-P-R-S-U2	96511	B-I3-N-V	96578	B-C-C2-F1-F3-H-J-N-R-S-Z1	96665	B-C-C2-F-F1-F3-R-R1-S-V
96346	B-F-F1-F2-F3-H-M-R-S-W-Z1	96515	B-C-D-E1-F-F1-F3-H1-M-N-R-S-T-Z1	96595	B-F-F3-R-S-V-Z1	96666	B-C-C2-F-F1-F3-R-R1-S-V
96347	B-C2-F-F1-F2-F3-H-M-R-S-W-Z1	96516	B-C-C2-D-E1-E2-F-F1-F3-H-H1-M-N-R-S-T-Z1	96598	B-C2-F3-I3-N-R-S-V-V1	96667	B-C-C2-F-F1-F3-R-R1-S-V
96349	B-C-C2-F-F1-F2-F3-H-M-R-S-Z1	96517	B-C-C2-D-E1-E2-F-F1-F3-H-H1-M-N-R-S-T-U-V-Z1	96599	B-C2-F3-N-R-S-V	96668	B-C-C2-F-F1-F3-R-R1-S-V
96350	B-F-F1-F2-F3-H-M-R-S-W-Z1	96520	B-F-N-U3-V	96601	B-V	96669	B-C-C2-F-F1-F3-R-R1-S-V
96351	B-C-C2-F-F1-F2-F3-H-M-R-S-Z1	96521	B-C-C1-C2-F-F1-F3-J-L-M-N-R-R1-S-T-V-X-Z1	96602	B-V	96670	B-C-C2-F-F1-F3-R-R1-S-V
96362	B-C2-F-F1-F2-F3-H-M-R-S-W-Z1	96530	A-B-C-C1-C2-F1-F3-H-H1-J-L-M-N-R-R1-S-T-V-X-Z1	96603	B-V	96671	B-C-C2-F-F1-F3-R-R1-S-V
96365	B-C-C2-F3-M-R-S-W-V	96531	A-B-C-C2-F-F1-F3-H-M-N-R-S-U-V	96604	B-V	96672	B-C-C2-F-F1-F3-R-R1-S-V
96367	B-C-C2-E1-F3-M-R-S-U2-W	96532	A-B-C-C1-C2-F1-F3-H-J-L-M-N-R-R1-S-T-V-X-Z1	96605	B-V	96673	B-C-C2-F-F1-F3-R-R1-S-V
96368	B-C-C2-F3-M-R-S-W	96533	A-B-C-C2-F-F1-F2-F3-R-R1-S-U-V-Z1	96607	B-V	96674	B-C-C2-F-F1-F3-R-R1-S-V
96370	B-F-F1-F2-H-M-W-Z1	96534	A-B-C-C1-C2-F1-F3-J-L-M-N-R-R1-S-T-V-X-Z1	96610	B-C-C2-F-F3-H1-R-R1-S-U2-V-Z1	96675	B-C-C2-F-F1-F3-R-R1-S-V
96371	B-C-C2-F-F3-M-R-S-W	96535	B-C-C2-F-F1-F2-F3-R-R1-S-U-V-Z1	96611	B-C-C2-F-F3-H1-R-R1-S-U2-V-Z1	96677	B-C-C2-F-F1-F3-R-R1-S-V
96373	B-C-C2-F-F3-M-R-S-W	96537	B-C-C2-F3-R-S-V-Z1	96612	B-C-C2-F-F3-H1-R-R1-S-U2-V-Z1	96678	B-C-C2-F-F1-F3-R-R1-S-V
96374	B-C-C2-F-F3-M-R-S-W	96540	B-C-C2-F1-F2-F3-R-S-Z1	96613	B-C-C2-F-F3-H1-R-R1-S-U2-V-Z1	96679	B-C-C2-F-F1-F3-R-R1-S-V
96375	B-C-C2-F-F3-M-R-S-W	96542	B-C-C2-F-F1-F2-F3-R-S	96615	B-F-F1-R-R1-V	96681	B-C-C2-F-F1-F3-R-S-V
96376	B-C-C2-F-F3-M-R-S-W	96543	B-C-C2-F-F1-F2-F3-P-R-S	96616	B-C2-F-F1-F3-R-R1-S-V	96682	B-C-C2-F-F1-F3-R-R1-S-V
96377	B-C-C2-F-F3-M-R-S-W	96544	A-B-C-C2-F-F1-F3-H-M-R-S-U	96619	B-C-C2-F1-F3-R-S-V	96683	B-C-C2-F-F1-F3-R-R1-S-V
96379	B-C-C2-F-F3-M-R-S-W	96548	A-B-C-C1-C2-F1-F3-H-J-L-M-N-R-R1-S-T-V-X-Z1	96620	B-C-C2-F-F1-F3-R-R1-S-V	96686	B-C-C2-F-F1-F3-R-R1-S-V
96384	B-C-C2-F-F3-M-R-S-W	96549	A-B-C-C1-C2-F1-F3-H-J-L-M-N-R-R1-S-T-V-X-Z1	96628	B-C-C2-F-F1-F3-R-R1-S-V	96691	B-C-C2-F-F1-F3-R-R1-S-V
96386	B-C-C2-F-F3-M-R-S-W	96550	A-B-H-M-N-U-V-Z1	96629	B-C-C2-F-F1-F3-R-R1-S-V	96692	B-C-C2-E2-F-F1-F3-R-R1-S-V
96387	B-C-C2-F-F3-M-R-S-W	96551	A-B-C-C1-C2-F1-F3-H-J-L-M-N-R-R1-S-T-V-X-Z1	96632	B-C-C2-F-F1-F3-R-R1-S-V	96693	B-C-C2-F-F1-F3-R-R1-S-V
96388	B-C-C2-F-F3-M-R-S-W	96552	B-Z1	96633	B-V	96694	B-C-C2-F-F1-F3-I3-J-R-R1-S-V-Z
96401	B-C-F-F3-N-R-S-V-V1-Z1	96553	A-B-C-C2-F-F1-F3-H-M-N-R-S-U	96634	B-V	96695	B-C-C2-F-F1-F3-R-R1-S-V
96502	A-B-C-C1-C2-F-F1-F3-J-M-N-R-R1-S-T-U-V			96641	B-V	96696	B-F-F1-R-R1-V
				96642	B-V	96698	B-C-C2-F-F1-F3-R-R1-S-V
				96643	B-F-F1-F3-R-R1-S-V		
				96644	B-V		
				96645	B-V		
				96649	B-C-C2-F-F1-F3-R-R1-S-V		
				96650	B-F-F1-R-R1-V		
				96657	B-C-C2-F-F1-F3-R-R1-S-V		

RESTRICTIONS

LEGEND

PS Form 2976, *Customs — CN 22 (Old C 1) and Sender's Declaration*
 PS Form 2976-A, *Customs Declaration and Dispatch Note*
 PS Form 2976-B, *Priority Mail Express International Shipping Label and Customs Form*

ATF = Bureau of Alcohol, Tobacco, Firearms, and Explosives
 Box C = Department of State (DOS) contractor personnel
 Box R = Retired military personnel
 DPO = Diplomatic Post Office
 MPO = Military Post Office
 PACT = Prevent All Cigarette Trafficking Act
 PAL = Parcel Airlift
 PMEMS = Priority Mail Express Military Service
 PUB 52 = Publication 52, *Hazardous, Restricted, and Perishable Mail*
 SAM = Space Available Mail
 USDA = United States Department of Agriculture

Note: Mail order catalogs are prohibited as SAM or PAL mail.

A. Securities, currency, or precious metals, including in their raw, unmanufactured state, are prohibited. Official Mail shipments are exempt from this restriction.

A1. Reserved for future use.

A2. Reserved for future use.

B. Other than for PMEMS and the exceptions listed below, a customs declaration PS Form 2976 or PS Form 2976-A is required for all items weighing 16 ounces or more, and for all items (regardless of weight) containing potentially dutiable mail contents (e.g., merchandise or goods) addressed to or from this ZIP Code. Other than the exceptions listed below, all PMEMS mailpieces (regardless of mail contents or weight) addressed to or from this ZIP Code must bear a properly completed PS Form 2976-B. The surface area of the address side of the mailpiece must be large enough to contain the applicable customs declaration. The following exceptions apply to known mailers, who for this purpose are defined as follows:

- Business mailers who enter volume mailings through business mail entry units or other bulk mail acceptance locations, pay postage through advance deposit accounts, use permit imprints for postage payment, and submit completed postage statements at the time of entry that certify that the mailpieces contain no dangerous materials that are prohibited by postal regulations. Such business mailers are exempt from providing customs documentation on non-dutiable letters and printed matter.
- All federal, state, and local government agencies whose mailings are regarded as "Official Mail." Such agencies are exempt from providing customs documentation, except for any items addressed to an MPO or DPO to which restriction "B2" applies.

B2. All federal, state, and local government agencies must complete customs documentation when sending potentially dutiable mail addressed to or from this MPO or DPO.

C. Cigarettes and other tobacco products, including tobacco leaves, chewing and pipe tobacco, snuff, and cigars are prohibited, including those that are authorized in Publication 52 under PACT.

C1. Obscene and horror articles, images, prints, paintings, cards, films, videotapes, comic books, etc., are prohibited.

C2. E-cigarettes and related products (e.g., nicotine liquids, e-liquids, parts, or supplies) are prohibited.

D. Coffee is prohibited.

E. Medicines (prescription, over-the-counter, vitamins, and supplements) are prohibited when mailed to individuals for human or animal use. This prohibition does not apply when medicines are sent as Official Mail only between specifically designated agencies such as pharmaceutical distributors, hospitals, clinics, and pharmacies.

E1. Mailers are responsible to ensure that all medicines and vaccines conform to host nation laws.

E2. Any matter depicting nude or seminude persons, pornographic, or sexual items are prohibited. Non-authorized political materials are prohibited. Religious materials contrary to the Islamic faith are prohibited in bulk quantities, but individual items for the personal use of the addressee are permissible.

E3. Radio transceivers, cordless/cellular telephones, global positioning systems, scanners, base stations, and handheld transmitters are prohibited.

F. Firearms of any type are prohibited, except firearms mailed to or by official U.S. government agencies. This restriction does not apply to firearms mailed from this MPO ZIP Code, provided ATF and USPS regulations are met. Antique firearms do not require an ATF form.

F1. Weapons of any type are prohibited.

F2. Mailing firearms to or from this MPO ZIP Code is restricted to one shotgun and one single shot .22 caliber rifle per individual.

F3. Replica weapons and inert explosive devices (such as grenades) and weapons parts are prohibited.

G. Parcels of any class are prohibited.

H. Meats, including preserved meats, bones, skin, hair, feathers, horns or hoofs of hoofed animals, and wool samples whether hermetically sealed or not, are prohibited.

H1. Pork or pork by-products are prohibited.

I. Reserved for future use.

I1. Reserved for future use.

I2. Reserved for future use.

I3. Mail of all classes must fit in a mail sack. Mail may not exceed the following dimensions:

- Maximum length 27 inches.
- Maximum width 14 inches.
- Maximum height 14 inches.

J. Standard Post and Parcel Select parcels may not exceed 108 inches in length and girth combined.

K. Reserved for future use.

L. All Official Mail is prohibited.

M. Fruits, vegetables, live animals, and live plants are prohibited.

N. Registered Mail service is prohibited.

O. Reserved for future use.

P. Official Mail only.

Q. Mail may not exceed 66 pounds, and size is limited to 42 inches maximum length and 72 inches maximum length and girth combined.

R. All alcoholic beverages, including those mailable under Publication 52, Part 421, are prohibited.

R1. Materials used in the production of alcoholic beverages (i.e., distilling material, hops, malts, yeast, etc.) are prohibited.

S. Synthetic cannabinoids used to stimulate the central nervous system commonly known as "synthetic marijuana," "K2," or "Spice" are prohibited.

T. Mailings of household shipments and case lots of food to or from an MPO require military transportation office approval prior to mailing. Mailings to or from a DPO require pre-approval from the Diplomatic Pouch and Mail Director.

U. Mail addressed to Retirees (Box R) is limited to 16 ounces and up to a 90-day supply of TRICARE medications. This restriction does not apply to mail endorsed "Free Matter for the Blind or Handicapped."

U1. Mail is limited to First-Class Mail items, including audio and video media, weighing 13 ounces or less. This limitation does not apply to Official Mail.

U2. Retirees (Box R) are not authorized mail service.

U3. Reserved for future use.

U4. Mail addressed to Box C is limited to 2 lbs.

V. PMEMS is not available.

V1. Electronic Delivery status information for Extra Services is not available on *USPS.com*. Manual record of delivery may be available upon request.

W. Hermetically sealed packages of meat products bearing USDA certification, such as dried beef, salami, and sausage, may be mailed. 200 grams of tobacco per parcel are permitted duty free.

X. Cremated remains are prohibited.

Y. Mail is limited to First-Class Mail and Priority Mail items only. This restriction also applies to Official Mail.

Z. No outside pieces (OSPs).

Z1. The following restriction is applicable only to International Service Centers (ISC)/Exchange Offices. An Anti-Pilferage Seal (Item No O817E or O818A) is required on all pouches and sacks.

Freely Associated States Restrictions

We list the mailing restrictions for Freely Associated States (FAS) in the Pull-Out section of the *Postal Bulletin*. All FAS Restrictions will be updated periodically.

Freely Associated States

Mail addressed to freely associated states is subject to certain conditions or restrictions of mailing regarding content, preparation, and handling. The following FAS Restrictions table outlines these conditions as listed by each affected FAS ZIP Code™ through the use of footnoted mailing restrictions codes (see the [Restrictions](#) following the table). For more information on available extra services for FAS destinations, see *Mailing Standards of the United States Postal Service, Domestic Mail Manual (DMM®)*, part 503.

Acceptance clerks must use the table with the Retail System Software terminal to determine which FAS ZIP Codes are active and which conditions of mailing apply.

FAS Restrictions Table

FAS Table	See Restrictions
96939	A, B
96940	A, B
96941	A, B
96942	A, B
96943	A, B
96944	A, B
96960	A, B
96970	A, B, D
Marshall Islands	C
Federated States of Micronesia	C

RESTRICTIONS LEGEND

PS Form 2976, *Customs Declaration CN 22 – Sender's Declaration*

PS Form 2976-A, *Customs Declaration and Dispatch Note*

FAS = Freely Associated State

- A.** Bank currency (coin and paper) is prohibited.
- B.** Signature Confirmation, Signature Confirmation Restricted Delivery, Adult Signature Requested, Adult Signature Restricted Delivery, Certified Mail Adult Signature Required, and Certified Mail Adult Signature Restricted Delivery not available.
- C.** Collect on Delivery is prohibited.
- D.** Betel nut (Areca catechu) is prohibited.

— *Asia-Pacific Relations,
Global Business, 3-6-25*

International Mail: International Competitive Services Product and Price Changes

Effective January 19, 2025, the Postal Service™ revised Notice 123, *Price List*, to reflect price changes to certain international Competitive Services as established by the Governors of the United States Postal Service®. The new prices are based on Postal Regulatory Commission (PRC) Order No. 8635, issued on January 16, 2025. In that order, the PRC found that the price adjustments included in the USPS® notice may go into effect on January 19, 2025. The order is available on the PRC website at [prc.gov](https://www.prc.gov). The entire Notice 123 is available for review via Postal Explorer® at pe.usps.com.

Also, effective January 19, 2025, the Postal Service changed the country group assignments for St. Pierre and Miquelon and changed the Foreign Office of Exchange Code for International Priority Airmail destined for St. Pierre and Miquelon. The Postal Service made similar revisions to *Mailing Standards of the United States Postal Service®*, International Mail Manual (IMM®), which is available via Postal Explorer at pe.usps.com. (See the IMM article on page 12 of this *Postal Bulletin*.)

This article describes the international price changes and minor classification changes for the following international competitive services:

- Priority Mail Express International®.
- Priority Mail International®.
- First-Class Package International Service® (FCPIS®).
- International Priority Airmail® (IPA®).
- International Surface Air Lift® (ISAL®).
- Direct Sacks of Printed Matter to One Addressee (Airmail M-bag®).
- The following are competitive international extra services and fees:
 - International Insurance.
 - Certificate of Mailing.
 - International Registered Mail.
 - Customs Clearance and Delivery Fee.

For pricing, go to the Postal Explorer website at pe.usps.com.

Priority Mail Express International

Priority Mail Express International (PMEI) service provides fast service to approximately 180 countries in 3–5 business days for many major markets, although the actual number of days may vary based on the following:

- Origin.
- Destination.
- Customs delays.

PMEI with Money-Back Guarantee service is available for certain destinations. Due to airline travel restrictions and cancellations, PMEI with Money-Back Guarantee service has been suspended for several destinations until further notice. For more information, go to the USPS Service Updates page at usps.com.

The price increase for PMEI service averages 4.9 percent. The Commercial Base price provides a discount below the published retail prices for customers who prepare and pay for PMEI shipments via permit imprint and online at usps.com, or as registered end-users using an authorized PC Postage vendor (with the exception of Click-N-Ship® service). Customers who prepare PMEI shipments via Click-N-Ship service pay retail prices. Commercial Plus will be equivalent to Commercial Base; however, deeper discounting may still be available to customers through negotiated service agreements.

The Postal Service will continue to include PMEI service in customized contracts. PMEI flat rate pricing continues to be available for Flat Rate Envelopes.

Priority Mail International

Priority Mail International (PMI) is an economical way to send merchandise and documents to approximately 180 countries in 6–10 business days for many major markets, although the actual number of days may vary based on the following:

- Origin.
- Destination.
- Customs delays.

The price increase for PMI service averages 4.9 percent. The Commercial Base price provides a discount below the published retail prices for customers who prepare and pay for PMI items via permit imprint and online at usps.com, or as registered end-users using an authorized PC Postage vendor (with the exception of Click-N-Ship). Customers who prepare PMI shipments via Click-N-Ship pay retail prices. Commercial Plus prices will be equivalent to Commercial Base; however, deeper discounting may still be made available to customers through negotiated service agreements.

The Postal Service will continue to include PMI service in customized contracts.

PMI flat rate pricing continues to be available for Flat Rate Envelopes, Small Flat Rate Boxes, and Medium and Large Flat Rate Boxes.

First-Class Package International Service

First-Class Package International Service (FCPIS) is an economical international service for small packages not exceeding 4 pounds in weight and \$400 in value. The price increase for FCPIS averages 4.9 percent. The Commercial Base price provides a discount below the published retail prices for customers who prepare and pay for FCPIS items via permit imprint or by USPS-approved online payment methods. Customers who prepare FCPIS shipments via Click-N-Ship service pay retail prices. Commercial Plus prices will be equivalent to Commercial Base; however, deeper discounting will be made available to customers through negotiated service agreements.

Electronic USPS Delivery Confirmation International service (E-USPS DELCON INTL[®]) is a tracking service available at no charge for FCPIS items to select destination countries.

International Priority Airmail and International Surface Air Lift

International Priority Airmail (IPA) service, including IPA M-bags, is a commercial service designed for volume mailings of all First-Class Mail International postcards, letters, and large envelopes (flats), and for volume mailings of FCPIS packages (small packets) weighing up to a maximum of 4.4 pounds. IPA shipments are typically flown to foreign destinations (exceptions apply to Canada) and are then entered into that country's air or surface priority mail system for delivery. The price increase for IPA is 4.9 percent. International Surface Airlift (ISAL) is like IPA except that once flown to the foreign destination, ISAL is entered into that country's air or surface nonpriority mail system for delivery. The price increase for ISAL is 28.9 percent.

Direct Sacks of Printed Matter to One Addressee (Airmail M-bags)

An Airmail M-bag is a direct sack of printed matter sent to a single foreign addressee at a single address. Prices are based on the weight of the sack. The published prices for Airmail M-bags will remain the same on average and not increase, although a few prices will change slightly.

International Extra Services and Fees

Depending on country destination and mail type, customers may add a variety of extra services to their outbound shipments and pay a variety of fees. The Postal

Service proposes to increase fees for certain competitive international extra services as follows:

- *PMEI and PMI merchandise insurance*: There is no charge for PMEI and PMI merchandise insurance coverage up to \$200. The starting fee for additional insurance over \$200 will be lowered to \$11.85. For each additional \$100 or fraction over \$300 up to a maximum indemnity limit of \$5000 (the maximum indemnity varies by country), the incremental fee will be as set forth in the following table below:

Indemnity Limit Not Over	Fee
Up to \$200	\$0.00
\$200.01 - \$300.00	11.85
\$300.01 - \$400.00	15.00
\$400.01 - \$500.00	18.15
\$500.01 - \$600.00	21.30
\$600.01 - \$700.00	24.40
\$700.01 - \$800.00	27.60
\$800.01 - \$900.00	30.70
\$30.70 plus \$3.15 per \$100 or fraction thereof over \$900 in declared value. Maximum insurance \$5,000 (varies by country)	

- *Certificate of Mailing service*: Prices for competitive international Certificate of Mailing service will be as follows:

Certificate of Mailing	
Individual pieces	Fee
Individual article (PS Form 3817)	\$2.10
Duplicate copy of PS Form 3817 or PS Form 3665 (per page)	2.10
Firm mailing sheet (PS Form 3665), per piece (minimum 3)	0.61
All other qualifying classes of mail	
Bulk quantities	
For first 1,000 pieces (or fraction thereof)	\$11.65
Each additional 1,000 pieces (or fraction thereof)	1.52
Duplicate copy of PS Form 3606	2.10

- *International Registered Mail service*: The fee for competitive international Registered Mail will increase to \$21.75.
- *Customs clearance and delivery fee*: The competitive customs clearance and delivery fee per dutiable item will increase to \$8.85.

The Postal Service has already incorporated these revisions into Notice 123, *Price List*, which is available via Postal Explorer at pe.usps.com.

— Product Classification,
Product Solutions, 3-6-25

Organization Information

Address Management

Post Office Changes

The table shown here includes Post Offices that have been suspended for years. Customers in these communities are being served by nearby offices. The listings in this table represent the administrative action of the Postal Service™ officially closing these offices.

Old/ New	Finance No.	ZIP Code	State	P.O. Name	County/ Parish	Station/ Branch/Unit	Unit Type	Effective Date	Comments
Old New	25-3260 25-5720	49634 49634	MI MI	Filer City Manistee	Manistee Manistee	Main Office Filer City	Post Office Place Name	07/29/2019 02/08/2025	Post Office™ discontinued. Retain ZIP Code™. Establish a Place Name. Continue to use Filer City, MI 49634 as the last line of address.
Old New	47-4680 47-8016	38045 38045	TN TN	Laconia Somerville	Fayette Fayette	Main Office Laconia	Post Office Place Name	04/30/2018 02/22/2025	Post Office discontinued. Retain ZIP Code. Establish a Place Name. Continue to use Laconia, TN 38045 as the last line of address.
Old New	47-2736 47-8652	38331 38331	TN TN	Eaton Trenton	Gibson Gibson	Main Office Eaton	Post Office Place Name	12/20/2018 02/22/2025	Post Office discontinued. Retain ZIP Code. Establish a Place Name. Continue to use Eaton, TN 38331 as the last line of address.

— Address Management, Addressing and Geospatial Technology, 3-6-25

Environmental Management

Waste Management: Aerosol Can Disposal

Waste aerosol cans are a potential safety and environmental concern because they may contain unused chemical products and propellant. Therefore, never dispose of aerosol cans that still contain product in the trash. To comply with regulatory requirements, employees must store and dispose of waste aerosol cans and any remaining contents as follows:

- **Empty Cans:** Use all the contents in the aerosol can prior to disposal. Empty aerosol cans are a Non-Hazardous Waste and must be recycled. Contact your local scrap metal contractor about placing empty aerosol cans in your scrap metal recycling dumpster. If recycling is not possible, sites may dispose of empty aerosol cans in the trash.
- **Non-Empty Cans (containing unused liquid and propellants):** Do not dispose of non-empty aerosol cans in the regular trash. Aerosol cans that contain unused liquid or unspent propellants and cannot be returned to the vendor must be managed as a Hazardous Waste or as Universal Waste, depending on your state and its specific requirements. Collect intact non-empty cans in a closed container that is

labeled as “Hazardous Waste – Aerosol Cans” or “Universal Waste – Aerosol Cans,” according to the requirements in your state. Arrange for off-site disposal or recycling of non-empty aerosol cans using the USPS National Waste Management Service Supplier available in eBuy+ (see Safety-Kleen catalog) and keep a record of the shipment.

Note: Sites that generate large quantities of waste aerosol cans, such as processing facilities, may use a commercial aerosol can puncturing system, if allowed by the state. Sites using aerosol can puncturing systems have additional requirements. For more information:

- Review the *Waste Aerosol Can Environmental Compliance Bulletin and Standard Work Instruction* at blue.usps.gov/sustainability/environmental/_pdf/waste/ecb-aerosolcans.pdf.
- Consult your designated USPS Environmental Specialist at blue.usps.gov/sustainability/regional-environmental-compliance-all.htm.

— Environmental Affairs and Corporate Sustainability,
Corporate Affairs, 3-6-25

Information Security

Back Up Your Data Daily and on World Backup Day

Postal Service™ employees and contractors should backup their USPS-issued devices on World Backup Day, which falls on March 31, 2025. World Backup Day serves as an important reminder for Postal Service employees and contractors to back up data daily.

A “backup” is a copy of all your important files such as documents and emails. Instead of keeping all your data on your computer or smartphone — duplicate your data and store it in the following alternative locations:

- External hard drives.
- Cloud storage.
- Removable media.

It is a known fact that a *cyberattack* (cybeready.com/cyber-events/world-backup-day) happens every 39 seconds, around 140,000 hard drives fail weekly, and 83 percent of organizations have had at least one data breach. While devices can be replaced, once data is lost, it could be erased indefinitely.

The following statistics from World Backup Day (world-backupday.com/en) show why it is important to back up your data:

- The percentage of people that have never backed up their devices: 21 percent.

- The percentage of data loss cases caused by accident: 29 percent.
- The total of all computers already infected with malware: 30 percent.

CyberSafe at USPS® wants to remind you to do the following:

- Take the World Backup Day Pledge, “I solemnly swear to back up my important documents and precious memories on March 31, 2025.” #WorldBackupDay
- Back up USPS® data to approved USB drives and secure file locations.

Remember, personal files must never be stored on USPS equipment or devices. Backups of USPS files should be performed on USPS-issued devices only.

For additional information on cybersecurity best practices, go to the CyberSafe page on *Blue* at blue.usps.gov/cyber and the CyberSafe page on *LiteBlue* lite-blue.usps.gov/cyber/.

— Corporate Information Security Office,
Chief Information Officer, 3-6-25

Stamp Services

Stamp Announcement 25-12: Battlefields of the American Revolution Stamps

Battlefields of the American Revolution

*These are the times that try men's souls:
The summer soldier and the sunshine patriot will,
in this crisis, shrink from the service of his country;
but he that stands it now, deserves the love
and thanks of man and woman.*

THOMAS PAINE



Lexington & Concord

April 19, 1775

Bunker Hill

June 17, 1775

Trenton

December 26, 1776

Saratoga

September 19, 1777
to October 17, 1777

Yorktown

September 28, 1781
to October 19, 1781

On April 16, 2025, in Concord, MA, the United States Postal Service® will issue the *Battlefields of the American Revolution* stamps (Forever® priced at the First-Class Mail® rate), in 15 designs, in a pressure-sensitive adhesive (PSA) pane of 15 stamps (Item 486300). These stamps will go on sale nationwide April 16, 2025, and must not be sold or canceled before the first-day-of-issue. **The *Battlefields of the American Revolution* commemorative pane of 15 stamps must not be split and the stamps must not be sold individually.**

Pairing photographs of battlefields and historic sites with dramatic illustrations of pivotal moments in the American Revolution, this pane of 15 stamps focuses on five turning points in the war: the Battles of Lexington and Concord; the Battle of Bunker Hill; the Battle of Trenton; the Battles of Saratoga; and the Battle of Yorktown. Five illustrations by Greg Harlin span two stamps each. Five stamps feature photographs by Jon Bilous, Richard Lewis, Tom Morris, Gregory J. Parker, and Kevin Stewart. Art director Derry Noyes designed the stamps.

Availability to Post Offices: Item 486300, *Battlefields of the American Revolution* (Forever Priced at the First-Class Mail Rate) Pane of 15 Stamps

Stamp Fulfillment Services will make an automatic push distribution to Post Offices of a quantity to cover approximately 30 days of sales. Distribution quantities for the automatic push distribution are available by logging on to SFS Web at sfsweb.usps.gov/sfsweb. Post Offices may begin ordering stamps before the first-day-of-issue through SFS Web; offices must also check the amount they will receive on their automatic push distribution.

How to Order the First-Day-of-Issue Postmark

Customers have 120 days to obtain the first-day-of-issue postmark by mail. They may purchase new stamps at their local Post Office® or at The Postal Store® website at usps.com/shop. They must affix the stamps to envelopes of their choice, address the envelopes (to themselves or others), and place them in a larger envelope addressed to:

FDOI – Battlefields of the American Revolution Stamps
USPS Stamp Fulfillment Services
8300 NE Underground Drive, Suite 300
Kansas City, MO 64144-9900

After applying the first-day-of-issue postmark, the Postal Service™ will return the envelopes through the mail. There is no charge for the postmark up to a quantity of 50. There is a 5-cent charge for each additional postmark over 50. All orders must be postmarked by August 16, 2025.

How to Order First-Day Covers

The Postal Service also offers first-day covers for new stamp issues and Postal Service stationery items postmarked with the official first-day-of-issue cancellation. Each item has an individual catalog number and is offered in the *USA Philatelic* catalog and online at usps.com/shop. Customers may register to receive a free *USA Philatelic* catalog online at usps.com/philatelic.

Locally produced items are not authorized. Only merchandise that has been approved and assigned an item number by Headquarters Retail Marketing may be produced and sold.

Issue:	<i>Battlefields of the American Revolution</i> Stamps
Item Number:	486300
Denomination & Type of Issue:	First-Class Mail Forever
Format:	Pane of 15 (15 designs)
Series:	N/A
Issue Date & City:	April 16, 2025, Concord, MA 01742
Art Director:	Derry Noyes, Washington, DC
Designer:	Derry Noyes, Washington, DC
Artist:	Greg Harlin, Annapolis, MD
Photographer:	Richard Lewis
Existing Photo:	Jon Bilous
Existing Photo:	Tom Morris
Existing Photo:	Gregory J. Parker
Existing Photo:	Kevin Stewart
Modeler:	Sandra Lane / Michelle Finn
Manufacturing Process:	Offset / Flexographic
Printer:	Banknote Corporation of America
Press Type:	Gallus RCS
Stamps per Pane:	15
Print Quantity:	15,000,000
Paper Type:	Phosphor, Block Tag
Adhesive Type:	Pressure-sensitive
Stamp Orientation:	Horizontal
Image Area 1 (w x h):	1.4200 x 1.0850 in. / 36.0680 x 27.5590 mm.
Stamp Size 1 (w x h):	1.5600 x 1.2250 in. / 39.6240 x 31.1150 mm.
Full Pane Size (w x h):	7.5000 x 8.9000 in. / 190.5000 x 226.0600 mm.
Colors:	Cyan, Magenta, Yellow, Black
Plate Size:	60 stamps per revolution
Plate Number:	"B" followed by four (4) single digits
Marginal Markings:	
Front:	Header: Battlefields of the American Revolution • Selvage text • Plate number in bottom two corners
Back:	Verso Text • © 2024 USPS • USPS logo • Two barcodes (486300) • Plate position diagram (4) • Promotional text

— Stamp Services,
Marketing, 3-6-25

Pictorial Postmarks Announcement

As a community service, the Postal Service™ offers pictorial postmarks to commemorate local events celebrated in communities throughout the nation. A list of events for which pictorial postmarks are authorized appears on the following pages. The sponsor of the pictorial postmark appears in italics under the date. Also provided are illustrations of these postmarks.

People attending these local events may get the postmark in person at the temporary Post Office® station established there. Those who cannot attend the event but who wish to get the postmark may submit a mail order request. Pictorial postmarks are available only for the dates indicated, and *requests must be postmarked no later than 30 days after the requested pictorial postmark date.*

All requests must include a stamped envelope or postcard bearing at least the minimum First-Class Mail® postage. Items submitted for postmark may not include

postage issued after the date of the requested postmark. Such items will be returned unserved.

Customers who want a postmark must affix stamps to any envelope or postcard of their choice, address the envelope or postcard to themselves or others, insert a card of postcard thickness in envelopes for sturdiness, and tuck in the flap. Place the envelope or postcard in a larger envelope and address it to: Pictorial Postmarks, followed by the Name of the Station, Address, City, State, ZIP+4® Code, as listed next to the postmark.

Customers can also send stamped envelopes and postcards without addresses for postmark, as long as they supply a larger envelope with adequate postage and their return address. After applying the pictorial postmark, the Postal Service returns the items (with or without addresses) under addressed protective cover.

The following pictorial postmarks have been extended for 90 days:



February 28, 2025
 United States Postal Service
 Daleville, VA Station
 Postmaster
 1492 Roanoke Road
 Daleville, VA 24083-9998



February 28, 2025
 United States Postal Service
 South Egremont, MA Station
 Postmaster
 64 Main Street
 South Egremont, MA 01258-9998



February 28, 2025
 United States Postal Service
 Bear Mountain, NY Station
 Postmaster
 30 Service Road
 Bear Mountain, NY 10911-9998



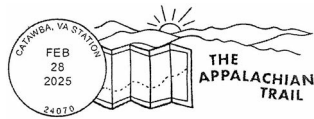
February 28, 2025
 United States Postal Service
 Fort Montgomery, NY Station
 Postmaster
 130 Firefighters Memorial Drive
 Fort Montgomery, NY 10922-9998



February 28, 2025
 United States Postal Service
 Bland, VA Station
 Postmaster
 207 Jackson Street
 Bland, VA 24315



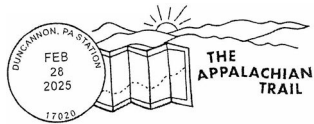
February 28, 2025
 United States Postal Service
 Berryville, VA Station
 Postmaster
 27 North Church Street
 Berryville, VA 22611-9998



February 28, 2025
 United States Postal Service
 Catawba, VA Station
 Postmaster
 4917 Catawba Creek Road
 Catawba, VA 24070



February 28, 2025
 United States Postal Service
 Boiling Springs, PA Station
 Postmaster
 3 East 1st Street
 Boiling Springs, PA 17007-9998



February 28, 2025
 United States Postal Service
 Duncannon, PA Station
 Postmaster
 203 North Market Street
 Duncannon, PA 17020-9998



March 8, 2025
 Barrington Town Parks
 and Rec. Department
 Barrington Station
 Postmaster
 15 Mallego Road
 Barrington, NH 03825



March 14, 2025
 Garfield-Perry Station
 Cleveland, OH 44136

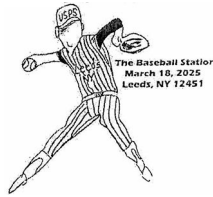
March 14, 2025
 Garfield-Perry Stamp Club
 Garfield-Perry Station
 Customer Relations
 Coordinator
 2200 Orange Avenue, #206
 Cleveland, OH 44101-9998



March 15, 2025
Garfield-Perry Station
Cleveland, OH 44136

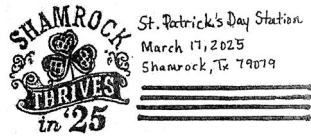
March 15–16, 2025

Garfield-Perry Stamp Club
Garfield-Perry Station
Customer Relations
Coordinator
2200 Orange Avenue, #206
Cleveland, OH 44101-9998



March 18, 2025

United States Postal Service
The Baseball Station
Postmaster
1155 Main Street
Leeds, NY 12451-9998



March 17, 2025

City of Shamrock
St. Patrick's Day Station
Postmaster
210 North Madden Street
Shamrock, TX 79079



March 18, 2025

North Carolina Esper
Charlotte, NC Station
Postmaster
2901 Scott Futrell Drive
Charlotte, NC 28228

— Stamp Services,
Marketing, 3-6-25

How to Order the First-Day-of-Issue Digital Color or Traditional Postmarks

Customers have 120 days to obtain the first-day-of-issue postmarks by mail. Each cover must have sufficient postage to meet First-Class Mail® requirements. Customers may purchase new stamps at their local Post Office®, by phone at 844-737-7826, or on The Postal Store® website at usps.com/shop.

Digital Color Postmarks

Only select stamp issues offer a digital color postmark. Customers may submit #6 or #10 envelopes constructed of paper rated as “laser safe.” The Postal Service™ recommends envelopes of 80-pound Accent Opaque, acid-free, 9/16-inch side seams with no glue on the flap. The maximum size of all digital color postmarks is 2 inches (vertically) by 4 inches (horizontally). Allow sufficient space on the envelope to accommodate the postmark. Do not use self-adhesive labels for addresses on the envelope. Two test envelopes must be included. There is a 50-cent charge per postmark at the time of servicing. Customers must submit a check, money order, or credit card for payment.

The Postal Service reserves the right to not accept hand-painted and other cachet envelopes that are not compatible with our digital color postmark equipment. The Postal Service also reserves the right to substitute traditional black rubber postmarks if use of nonspecified envelopes results in poor image quality or damage to equipment.

Customers must affix the stamps to the envelopes and address them to themselves or others for return through the mail. Or, they may include an additional self-addressed return envelope, large enough to accommodate their canceled items, with sufficient postage affixed for return of

their postmarked items. Address customer requests for digital color postmarks to:

FDOI – (Name of Stamp Issue)
USPS Stamp Fulfillment Services
8300 NE Underground Drive, Suite 300
Kansas City, MO 64144-9900

After applying the first-day-of-issue postmark, the Postal Service will return the envelopes to the customer by U.S. Mail®.

Traditional Postmarks

Customers must affix the stamps to the envelopes and address them to themselves or others for return through the mail. Or, they may include an additional self-addressed return envelope, large enough to accommodate their canceled items, with sufficient postage affixed for return of their postmarked items. Address customer requests for traditional postmarks to:

FDOI – (Name of Stamp Issue)
USPS Stamp Fulfillment Services
8300 NE Underground Drive, Suite 300
Kansas City, MO 64144-9900

After applying the first-day-of-issue postmark, the Postal Service will return the envelopes to the customer by U.S. Mail. There is no charge for the first 50 postmarks. There is a 5-cent charge for each additional postmark over 50. Customers must submit a check, money order, or credit card for payment.

Locally produced items are not authorized. Only merchandise that has been approved and assigned an item number by Headquarters Retail Marketing may be produced and sold.



Digital Color Pictorial

FDOI – Lunar New Year • Year of the Snake Stamp

USPS Stamp Fulfillment Services
8300 NE Underground Drive, Suite 300
Kansas City, MO 64144-9900

May 14, 2025



Black and White Pictorial

FDOI – Lunar New Year • Year of the Snake Stamp

USPS Stamp Fulfillment Services
8300 NE Underground Drive, Suite 300
Kansas City, MO 64144-9900

May 14, 2025

LOVE

FIRST DAY OF ISSUE

**JANUARY 17, 2025
KUTZTOWN, PA 19530**

Digital Color Pictorial

FDI – Love Stamp

USPS Stamp Fulfillment Services
8300 NE Underground Drive, Suite 300
Kansas City, MO 64144-9900

May 17, 2025

LOVE

FIRST DAY OF ISSUE

**JANUARY 17, 2025
KUTZTOWN, PA 19530**

Black and White Pictorial

FDI – Love Stamp

USPS Stamp Fulfillment Services
8300 NE Underground Drive, Suite 300
Kansas City, MO 64144-9900

May 17, 2025

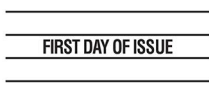


Digital Color Pictorial

FDI – Spiral Galaxy

USPS Stamp Fulfillment Services
8300 NE Underground Drive, Suite 300
Kansas City, MO 64144-9900

May 21, 2025



Black and White Pictorial

FDI – Spiral Galaxy

USPS Stamp Fulfillment Services
8300 NE Underground Drive, Suite 300
Kansas City, MO 64144-9900

May 21, 2025

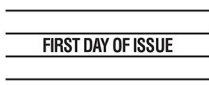


Digital Color Pictorial

FDI – Star Cluster

USPS Stamp Fulfillment Services
8300 NE Underground Drive, Suite 300
Kansas City, MO 64144-9900

May 21, 2025



Black and White Pictorial

FDI – Star Cluster

USPS Stamp Fulfillment Services
8300 NE Underground Drive, Suite 300
Kansas City, MO 64144-9900

May 21, 2025

1794
COMPASS ROSE
FIRST DAY OF ISSUE



Digital Color Pictorial

FDI – 1794 Compass Rose Stamp

USPS Stamp Fulfillment Services
8300 NE Underground Drive, Suite 300
Kansas City, MO 64144-9900

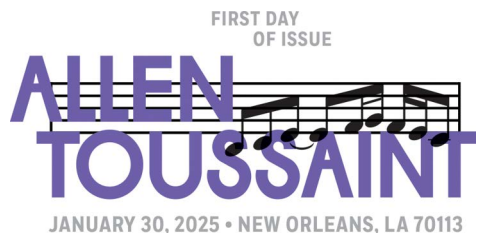
May 24, 2025



FD0I – 1794 Compass Rose Stamp
 USPS Stamp Fulfillment Services
 8300 NE Underground Drive, Suite 300
 Kansas City, MO 64144-9900

May 24, 2025

Black and White Pictorial



FD0I – Allen Toussaint Stamp
 USPS Stamp Fulfillment Services
 8300 NE Underground Drive, Suite 300
 Kansas City, MO 64144-9900

May 30, 2025

Digital Color Pictorial



FD0I – Allen Toussaint Stamp
 USPS Stamp Fulfillment Services
 8300 NE Underground Drive, Suite 300
 Kansas City, MO 64144-9900

May 30, 2025

Black and White Pictorial



FD0I – American Vistas Stamps
 USPS Stamp Fulfillment Services
 8300 NE Underground Drive, Suite 300
 Kansas City, MO 64144-9900

June 21, 2025

Black and White Pictorial



FD0I – The Appalachian Trail Stamps
 USPS Stamp Fulfillment Services
 8300 NE Underground Drive, Suite 300
 Kansas City, MO 64144-9900

June 28, 2025

Digital Color Pictorial



FD0I – The Appalachian Trail Stamps
 USPS Stamp Fulfillment Services
 8300 NE Underground Drive, Suite 300
 Kansas City, MO 64144-9900

June 28, 2025

Black and White Pictorial



FD0I – Freshwater Fishing Lures Stamps
 USPS Stamp Fulfillment Services
 8300 NE Underground Drive, Suite 300
 Kansas City, MO 64144-9900

July 13, 2025

Digital Color Pictorial



FDI – Freshwater Fishing Lures Stamps

USPS Stamp Fulfillment Services
8300 NE Underground Drive, Suite 300
Kansas City, MO 64144-9900

July 13, 2025

Black and White Pictorial



FDI – Vibrant Leaves Stamps

USPS Stamp Fulfillment Services
8300 NE Underground Drive, Suite 300
Kansas City, MO 64144-9900

July 14, 2025

Black and White Pictorial



FDI – Betty White Stamp

USPS Stamp Fulfillment Services
8300 NE Underground Drive, Suite 300
Kansas City, MO 64144-9900

July 27, 2025

Digital Color Pictorial



FDI – Betty White Stamp

USPS Stamp Fulfillment Services
8300 NE Underground Drive, Suite 300
Kansas City, MO 64144-9900

July 27, 2025

Black and White Pictorial



FDI – Battlefields of the American Revolution Stamps

USPS Stamp Fulfillment Services
8300 NE Underground Drive, Suite 300
Kansas City, MO 64144-9900

August 16, 2025

Digital Color Pictorial



FDI – Battlefields of the American Revolution Stamps

USPS Stamp Fulfillment Services
8300 NE Underground Drive, Suite 300
Kansas City, MO 64144-9900

August 16, 2025

Black and White Pictorial



475 L'ENFANT PLAZA SW
WASHINGTON DC 20260-5540

First-Class Mail
Postage & Fees Paid
USPS
Permit No. G-10

Celebrate the universal experience of love with

Love

Forever® Stamps

© Keith Haring Foundation. Licensed by Artestar, New York.



SOLD AS A SINGLE AND A PANE OF 20. **ON SALE NOW.**

