



Roll with Control Safety is in Your Hands Roll it Right Week

See page 3

Contents

COVER STORY

Roll With Control, Safety Is In Your Hands 3

POLICIES, PROCEDURES, AND FORMS UPDATES

Manuals

DMM Revision: Parcel-Dimension Compliance 4

IMM Revision: Individual Country Listing for the United

Arab Emirates 7

IMM Revision: Individual Country Listing for Moldova 8

Publications

Publication 52 Revision: Certain Mailable Dangerous

Goods Requirements 8

ORGANIZATION INFORMATION

Domestic Mail

Labeling List Changes 14

Environmental Compliance

Stormwater Retention and Detention Basins 16

Human Resources

RIF Competitive Areas for the Postal Service 16

Information Security

CyberSafe Training for Contractors Course — Due

June 6, 2026 19

Verify the Call, Shield Your Data and the Network 19

Stamp Services

Stamp Announcement 26-18: Treasures of the

Revolutionary Era Prestige Booklet 20

Stamp Announcement 26-19: American Bison Stamp 42

Stamp Announcement 26-20: Postcrossing Stamps 44

Stamp Announcement 26-21: International Peace

Stamp 46

Stamp Announcement 26-22: North American Soccer

Stamp 48

Update: Stamp Announcement 26-13: Figures of the

American Revolution Stamps 50

Update: Stamp Announcement 26-14: Happy Birthday

Stamp 50

Update: Stamp Announcement 26-16: Route 66

Stamps 51

Update: Stamp Announcement 26-17: Bald Eagle:

Hatchling to Adult Stamps 51

Pictorial Postmarks Announcement 52

How to Order the First-Day-of-Issue Digital Color or

Traditional Postmarks 53

PULL-OUT INFORMATION

Fraud

Missing, Lost, or Stolen U.S. Money Order Forms 21

Missing, Lost, or Stolen Canadian Money Order Forms 29

Verifying U.S. Postal Service Money Orders 31

Counterfeit Canadian Money Order Forms 32

Toll-Free Number Available to Verify Canadian

Money Orders 32

Other Information

Overseas Military/Diplomatic Mail 34

Freely Associated States Restrictions 40

POSTAL BULLETIN 2025 ANNUAL INDEX

2025 Annual Index PB 22694 (1-22-26)

Find the latest in mail and delivery information
and services offered by U.S. Postal®
in the *Postal Bulletin* at
about.usps.com/postal-bulletin

Mail Moment®

The U.S. Postal Service Is Everywhere
So You Can Be Anywhere®

Cover Story

Roll With Control, Safety Is In Your Hands

To ensure the safe movement of Mail Transport Equipment (MTE) inside USPS® facility, it is important to treat every cart, hamper, APC, or OTR as a piece of industrial equipment—not just something on wheels. Most injuries tied to MTE come from preventable strains, slips, and striking objects or employees. A clear focus on body mechanics, route planning, and equipment condition dramatically reduces risk while keeping mail flow efficient.

Why Safe MTE Movement Matters

Moving MTE is one of the most frequent physical tasks in USPS operations. If done incorrectly, it can lead to back strains, shoulder injuries, injured fingers, and trip hazards. If done correctly, it protects employees, preserves equipment, and keeps operations running smoothly. The goal is simple: move mail efficiently with less effort and zero injuries.

Understanding the Equipment

Different MTE types behave differently when moved. Knowing how each one moves helps you choose the safest technique.

- **All-Purpose Containers (APCs)** — Tall, wheeled containers that can become unstable when overloaded or unevenly loaded.
- **Hampers and Wiretainers** — Lower to the ground but can be heavy and difficult to steer when full.
- **Pallet Jacks**— Steer from the rear and require more control and awareness of surroundings due to weight and momentum.
- **Over The Road containers (OTR's)** — Often used in plants; are larger and heavier, these must be controlled using the proper steering handles and ensure brakes are set when placed.

Preparing Before You Move MTE-Inspect the Equipment

A quick check prevents the following accidents:

- Are wheels aligned and free of debris?
- Is the equipment free from defects?
- Is the load balanced and secured?

Plan the Route

A safe path is as important as safe technique.

- Identify blind corners, wet floors, or high traffic areas.
- Ensure doors, docks, and aisles are clear.
- Avoid steep inclines when possible.

Load Smart

How you load determines how safely you can move.

- Keep heavier items low and centered.

- Do not exceed recommended capacity.
- Make sure nothing sticks out or obstructs your view.

Core Principles of Safe Movement

Pushing Is Safer Than Pulling

Pushing allows you to use your body weight, maintain a clear line of sight, and keep your spine in a neutral position. Pulling equipment should be avoided if possible.

- Keep hands at about waist height, using the handles, if provided.
- Stay close to the equipment—don't reach or lean.
- Walk forward with short, controlled steps.
- Continue to watch in front to ensure path remains clear.

Rolling With Control

Wheeled equipment can gain momentum quickly, especially on ramps or smooth floors.

- Test the wheels before moving—ensure they roll freely and aren't locked or damaged.
- Keep speeds low enough to stop safely at any moment.
- Use both hands for stability and steering.

Safety improves when everyone participates in the following:

- Report damaged MTE immediately and take it out of service.
- Keep aisles and work areas clear.
- Ensure all safety latches are in place.
- Share tips and speak up when you see unsafe movement.
- Encourage new employees to practice proper techniques early.

A safe facility is a productive facility — and every employee plays a role.

The safe movement of Mail Transport Equipment is a fundamental operational requirement and an individual responsibility. Every piece of mail we move depends on the people who move it safely. Injuries are preventable, and safety is never optional. Make the choice every time you move MTE: slow down, roll with control, and put safety first. By upholding these practices consistently, we protect our workforce, safeguard our equipment, and preserve the integrity of Postal Service™ operations.

— Occupational Safety and Health,
Human Resources, 4-16-26

Policies, Procedures, and Forms Updates

Manuals

DMM Revision: Parcel-Dimension Compliance

Effective July 12, 2026, the Postal Service™ will revise *Mailing Standards of the United States Postal Service, Domestic Mail Manual (DMM®)*, in various sections, to reflect that the Postal Service is expanding the current requirement that mailers include accurate parcel dimensions in a manifest.

The Postal Service is expanding the current standard, in two phases, by requiring mailers to include accurate dimensions (length, width, and height) of parcels included in a manifest. Dimensions are not required for Flat-Rate-priced pieces or USPS Returns® pieces.

This new standard only applies to the following Postal Service commercial products:

- Priority Mail Express®.
- Priority Mail®.
- USPS Ground Advantage®.
- Parcel Select®.

Failure to comply with the expanded requirement will subject parcel mailers to the Dimension Noncompliance fee, which will be deferred until Phase Two. The two phases are as follows:

Phase One

In Phase One, effective July 12, 2026, the Postal Service will implement the requirement that accurate dimensions be reported in the manifest for all parcels. During Phase One, the Postal Service will do the following:

- Evaluate data;
- Review customer activity;
- Identify thresholds; and
- Implement and test trusted systems' accuracy.

Assessing the Dimension Noncompliance fee for omitting the dimensions or for inaccurately reported dimensions in the manifest will be deferred until the implementation of Phase Two. However, until the Postal Service implements Phase Two, it will continue to charge the Dimension Noncompliance fee for parcels that exceed 1 cubic foot or 22 inches in length if the parcel's dimensions are omitted or inaccurate in the manifest.

Phase Two

In Phase Two, tentatively scheduled for early 2027, the Postal Service will implement an automated approach to detect that dimensions are included and accurate in the

manifest. This schedule is tentative and subject to change. Once the Postal Service implements Phase Two, it will begin to charge parcel mailers the Dimension Noncompliance fee for omitting the parcel's dimensions or for inaccurately reporting its dimensions in the manifest.

As it develops this phase, the Postal Service will establish the protocols, that will communicate to Postal Service business partners, in response to the following:

- Dispute standards and recourse.
- Published specifications, including tolerances and rounding rules.
- Whether the equipment used to measure shipments is certified as legal for trade and conforms to current county-, state-, and municipality-level weights and measures rules.
- Will there be an exception process, and if so, how will the Postal Service communicate that information?
- How will the Postal Service resolve instances in which there are different dimensions of the same package from different pieces of equipment?
- Will soft packaging and "Cubic Soft Packs" be exempt from sampling and fee assessment?

Establishing Phase Two will require the Postal Service to work closely with its business partners to implement standards that are mutually beneficial. This includes providing Postal Service business partners with adequate lead time to ensure a smooth transition in implementing Phase Two of this initiative.

Mailing Standards of the United States Postal Service, Domestic Mail Manual (DMM)

	*	*	*	*	*
200	Commercial Letters, Cards, Flats, and Parcels				
	*	*	*	*	*
210	Commercial Mail Priority Mail Express				
213	Prices and Eligibility				
	*	*	*	*	*
1.0	Prices and Fees				
	*	*	*	*	*

1.4 Dimensional Weight Price for Low-Density Parcels

[Add a section number and title between the section number and title of 1.4 and the introductory text of 1.4 to read as follows, and renumber current 1.4.1 through 1.4.3 to new 1.4.2 through 1.4.4, respectively:]

1.4.1 General

[Revise the text of new 1.4.1 (current introductory text) to read as follows:]

Postage for parcels addressed for delivery to zones 1–9 and exceeding 1 cubic foot (1,728 cubic inches) is based on the actual weight or the dimensional weight (as calculated in 1.4.2 or 1.4.3), whichever is greater.

* * * * *

[Delete renumbered 1.4.4, “Dimensional Weight Pricing Dimension Standard,” in its entirety.]

* * * * *

1.8 Nonstandard Fees

[Revise the introductory text of 1.8 to read as follows:]

Except for Priority Mail Express Return service, mailers of a Priority Mail Express piece are subject to a nonstandard fee (see Notice 123 — Price List) as follows:

* * * * *

[Revise the text of items g. and h. to read as follows, respectively:]

- g. Shipping Services file manifests or other approved electronic documentation must include the extra-service code (ESC) for the characteristics category (see 201.7.6.2).
- h. Mailers of parcels requiring the characteristics extra-service code (ESC) under 1.8g and who have a Shipping Services file manifest or other approved electronic documentation and do not meet the requirement to include the ESC for such parcels will be assessed the Dimension Noncompliance fee under 1.9.

1.9 Dimension Noncompliance Fee

[Revise the first sentence of 1.9 to read as follows:]

Except for Flat-Rate-priced pieces and Priority Mail Express Return service pieces, mailers of Priority Mail Express parcels must include the parcel’s dimensions (length, width, height), and when applicable the characteristics ESC (see 1.8g) in the Shipping Services file manifest or other approved electronic documentation. The mailer will be assessed the Dimension Noncompliance fee (see Notice 123 — Price List) if the parcel’s dimensions or the ESC are omitted or inaccurate.***

[Add a note after the end of the text of 1.9 that reads as follows:]

Note: Until the Postal Service implements Phase Two of the “Parcel Dimension Compliance” initiative, mailers of Priority Mail Express parcels will continue to be charged the Dimension Noncompliance fee for parcels that exceed 1 cubic foot or 22 inches in length, if the parcel’s dimensions are omitted or inaccurate in the Shipping Services file Smanifest or other approved electronic documentation.

* * * * *

220 Commercial Mail Priority Mail

223 Prices and Eligibility

1.0 Prices and Fees

* * * * *

1.4 Dimensional Weight Price for Low-Density Parcels

[Add a section number and title between the section number and title of 1.4 and the introductory text of 1.4 to read as follows, and renumber current 1.4.1 through 1.4.3 to new 1.4.2 through 1.4.4, respectively:]

1.4.1 General

[Revise the text of new 1.4.1 (current introductory text) to read as follows:]

Postage for parcels addressed for delivery to zones 1-9 and exceeding 1 cubic foot (1,728 cubic inches) is based on the actual weight or the dimensional weight (as calculated in 1.4.2 or 1.4.3), whichever is greater.

* * * * *

[Delete renumbered 1.4.4, “Dimensional Weight Pricing Dimension Standard,” in its entirety.]

* * * * *

1.10 Nonstandard Fees

[Revise the introductory text of 1.10 to read as follows:]

Except for Flat Rate and Priority Mail Return service packages, mailers of Priority Mail pieces are subject to a nonstandard fee (see Notice 123 — Price List) as follows:

* * * * *

[Revise the text of items g. and h. to read as follows, respectively:]

- g. Shipping Services file manifests or other approved electronic documentation must include the extra-service code (ESC) for the characteristics category (see 201.7.6.2).
- h. Mailers of parcels requiring the characteristics extra-service code (ESC) under 1.10g and who have a

Shipping Services file manifest or other approved electronic documentation and do not meet the requirement to include the ESC for such parcels will be assessed the Dimension Noncompliance fee under 1.11.

1.11 Dimension Noncompliance Fee

[Revise the first sentence of 1.11 to read as follows:]

Except for Flat-Rate-priced pieces and Priority Mail Return service pieces, mailers of Priority Mail parcels must include the parcel’s dimensions (length, width, height), and when applicable the characteristics ESC (see 1.10g), in the Shipping Services file manifest or other approved electronic documentation. The mailer will be assessed the Dimension Noncompliance fee (see Notice 123 — Price List) if the parcel’s dimensions or the ESC are omitted or inaccurate.***

[Add a note after the end of the text of 1.11 that reads as follows:]

Note: Until the Postal Service implements Phase Two of the “Parcel Dimension Compliance” initiative, mailers of Priority Mail parcels will continue to be charged the Dimension Noncompliance fee for parcels that exceed 1 cubic foot or 22 inches in length if the parcel’s dimensions are omitted or inaccurate in the Shipping Services file manifest or other approved electronic documentation.

* * * * *

250 Commercial Mail Parcel Select Parcels

253 Prices and Eligibility

1.0 Prices and Fees

* * * * *

1.2 Dimensional Weight Price for Low-Density Parcels

[Add a section number and title between the section number and title of 1.2 and the introductory text of 1.2 to read as follows, and renumber current 1.2.1 through 1.2.3 to new 1.2.2 through 1.2.4, respectively:]

1.2.1 General

[Revise the text of new 1.2.1 (current introductory text) to read as follows:]

Postage for Destination Entry parcels exceeding 1 cubic foot (1,728 cubic inches) is based on the actual weight or the dimensional weight (as calculated in 1.2.2 or 1.2.3), whichever is greater.

* * * * *

[Delete renumbered 1.2.4, “Dimensional Weight Pricing Dimension Standard,” in its entirety.]

* * * * *

1.7 Nonstandard Fees

[Revise the introductory text of 1.7 to read as follows:]

Except for oversized-priced parcels, mailers of a Parcel Select Destination Entry or USPS Connect Local piece are subject to a nonstandard fee (see Notice 123 — Price List) as follows:

* * * * *

[Revise the text of items g. and h. to read as follows:]

- g. Shipping Services file manifests or other approved electronic documentation must include the extra-service code (ESC) for the characteristics category (see 201.7.6.2).
- h. Mailers of parcels requiring the characteristics extra-service code (ESC) under 1.7g and who have a Shipping Services file manifest or other approved electronic documentation and do not meet the requirement to include the ESC for such parcels will be assessed the Dimension Noncompliance fee under 1.8.

1.8 Dimension Noncompliance Fee

[Revise the first sentence of 1.8 to read as follows:]

Mailers of Parcel Select parcels must include the parcel’s dimensions (length, width, height), and when applicable the characteristics ESC (see 1.7g), in the Shipping Services file manifest or other approved electronic documentation. The mailer will be assessed the Dimension Noncompliance fee (see Notice 123 — Price List) if the parcel’s dimensions or the ESC are omitted or inaccurate.***

[Add a note after the end of the text of 1.8 to read as follows:]

Note: Until the Postal Service implements Phase Two of the “Parcel Dimension Compliance” initiative, mailers of Parcel Select parcels will continue to be charged the Dimension Noncompliance fee for parcels that exceed 1 cubic foot or 22 inches in length if the parcel’s dimensions are omitted or inaccurate in the Shipping Services file manifest or other approved electronic documentation.

* * * * *

280 Commercial Mail USPS Ground Advantage — Commercial

283 Prices and Eligibility

1.0 Prices and Fees

* * * * *

1.4 Dimensional Weight Price for Low-Density Parcels

[Add a section number and title between the section number and title of 1.4 and the introductory text of 1.4 to read

as follows, and renumber current 1.4.1 through 1.4.3 to new 1.4.2 through 1.4.4, respectively:]

1.4.1 General

[Revise the text of new 1.4.1 (current introductory text) to read as follows:]

* * * * *

Postage for USPS Ground Advantage – Commercial parcels addressed for delivery to zones 1-9 and exceeding 1 cubic foot (1,728 cubic inches) is based on the actual weight or the dimensional weight (as calculated in 1.4.2 or 1.4.3), whichever is greater.

* * * * *

[Delete renumbered 1.4.4, “Dimensional Weight Pricing Dimension Standard,” in its entirety.]

* * * * *

1.7 Nonstandard Fees

[Revise the introductory text of 1.7 to read as follows:]

Except for oversized priced parcels and USPS Ground Return service parcels, mailers of a USPS Ground Advantage – Commercial piece are subject to a nonstandard fee (see Notice 123 – Price List) as follows:

* * * * *

[Revise the text of items g. and h. to read as follows:]

- g. Shipping Services file manifests or other approved electronic documentation must include the extra-service code (ESC) for the characteristics category (see 201.7.6.2).
h. Mailers of parcels requiring the characteristics extra-service code (ESC) under 1.7g and who have a Shipping Services file manifest or other approved

electronic documentation and do not meet the requirement to include the ESC for such parcels will be assessed the Dimension Noncompliance fee under 1.8.

1.8 Dimension Noncompliance Fee

[Revise the first sentence of 1.8 to read as follows:]

Except for USPS Ground Advantage Return service pieces, mailers of USPS Ground Advantage – Commercial parcels must include the parcel’s dimensions (length, width, height), and when applicable the characteristics ESC (see 1.7g), in the Shipping Services file manifest or other approved electronic documentation. The mailer will be assessed the Dimension Noncompliance fee (see Notice 123 – Price List) if the parcel’s dimensions or the ESC are omitted or inaccurate.***

[Add a note after the end of the text of 1.8 that reads as follows:]

Note: Until the Postal Service implements Phase Two of the “Parcel Dimension Compliance” initiative, mailers of USPS Ground Advantage parcels will continue to be charged the Dimension Noncompliance fee for parcels that exceed 1 cubic foot or 22 inches in length if the parcel’s dimensions are omitted or inaccurate in the Shipping Services file manifest or other approved electronic documentation.

* * * * *

The Postal Service will incorporate these revisions into the July 12, 2026, edition of the online DMM, which is available on Postal Explorer® at pe.usps.com.

– Product Classification, Product Solutions, 4-16-26

IMM Revision: Individual Country Listing for the United Arab Emirates

Effective April 16, 2026, the Postal Service™ is revising the Individual Country Listing for the United Arab Emirates (UAE) in Mailing Standards of the United States Postal Service, International Mail Manual (IMM®) to reflect that the UAE is transitioning to a 12-digit tariff code structure. However, due to current technical limitations, mailers should provide the first 10 digits of the 12-digit tariff code.

This revision is based on a formal request that Emirates Post Group Company PJSC (the designated postal operator of the UAE) made through the Universal Postal Union via International Bureau Circular 33, dated March 16, 2026.

Mailing Standards of the United States Postal Service, International Mail Manual (IMM)

* * * * *

Individual Country Listings

* * * * *

United Arab Emirates

Country Conditions for Mailing

* * * * *

Observations

[Add a new item 6. to read as follows:]

- 6. The UAE is transitioning to a 12-digit Gulf Cooperation Council (GCC) tariff code structure. Where possible, it

is recommended that senders provide the full 12-digit GCC tariff code. In circumstances where technical limitations only allow 10 digits, use the first 10 digits of the 12-digit GCC tariff code in the HS Tariff Number field of the customs form or Shipping Services File.

* * * * *

Although effective April 16, 2026, the Postal Service will incorporate this revision into the next edition of the online IMM, which is available via Postal Explorer® at pe.usps.com.

— Product Classification,
Product Solutions, 4-16-26

IMM Revision: Individual Country Listing for Moldova

Effective April 16, 2026, the Postal Service™ is revising the Individual Country Listing for Moldova in *Mailing Standards of the United States Postal Service, International Mail Manual (IMM)®* to reflect prohibitions and restrictions on various types of foodstuffs.

These revisions are based on a formal request that Posta Moldovei (the designated postal operator of the Republic of Moldova) made through the Universal Postal Union via *International Bureau Circular 21*, dated March 2, 2026.

Mailing Standards of the United States Postal Service, International Mail Manual (IMM)

* * * * *

Individual Country Listings

* * * * *

Moldova

Country Conditions for Mailing

* * * * *

Prohibitions

[Add a new entry in alphabetical order to read as follows:]

Foodstuffs of animal origin, including meat-based products (both processed and unprocessed), milk, and milk products.

* * * * *

Restrictions

[Number the current entry as item 1. and add two new entries to read as follows:]

2. Non-animal-based foodstuffs are limited to 4.4 pounds (2 kilograms) per shipment.
3. Powdered milk for infants and foods for infants may be admitted, provided that the items are sold under a registered trademark in the Republic of Moldova.

* * * * *

Although effective April 16, 2026, the Postal Service will incorporate these revisions into the next edition of the online IMM, which is available via Postal Explorer® at pe.usps.com.

— Product Classification,
Product Solutions, 4-16-26

Publications

Publication 52 Revision: Certain Mailable Dangerous Goods Requirements

Effective April 16, 2026, the Postal Service™ is revising Publication 52, *Hazardous, Restricted, and Perishable Mail*, in various sections, to reflect an update in Postal Service mail class availability, packaging, marking and labeling requirements for certain mailable dangerous goods in the Postal Service international mailstream. These changes reflect recent updates to the Universal Postal Union Regulations to the Convention, Final Protocol (2025).

Although these revisions will not be published in Publication 52 until later, these standards are effective immediately.

Publication 52, Hazardous, Restricted, and Perishable Mail

* * * * *

3 Hazardous Materials

* * * * *

34 Mailability by Hazard Class

* * * * *

346 Toxic Substances and Infectious Substances (Hazard Class 6)

* * * * *

346.3 Division 6.2, Infectious Substances Mailability

346.31 General

[Revise the text of 346.31 to read as follows:]

The following apply:

- a. Conditions for mailing Division 6.2 infectious substances:
 - (1) **International Mail:** Category A infectious substances are nonmailable. Category B infectious substances (as defined in 346.12(a)2) are permitted when they are intended for medical or veterinary use, research, or laboratory certification related to public health, and are properly prepared for mailing. The mailer must receive written approval from the director, Product Classification. (Refer to 214 for contact information.) See 622.2 and *Mailing Standards of the United States Postal Service, International Mail Manual (IMM)*, section 135, for specific requirements.
 - (2) **Domestic Mail:** Infectious substances are mailable only when intended for medical or veterinary use, research, or laboratory certification related to public health, and must be properly prepared to withstand shocks, pressure changes, and other conditions incident to ordinary handling in transit. The following substances are mailable subject to the corresponding packaging requirements:
 - (a) Category B Infectious Substance: Packaging Instruction 6C.
 - (b) Sharps and Other Mailable Regulated Medical Waste: Packaging Instruction 6D.
 - (c) Used Health Care Products: Packaging Instruction 6E.
 - (d) Forensic Materials: Packaging Instruction 6F.
 - (e) Nonregulated Materials: Packaging Instruction 6G.
 - (f) Exempt Human or Animal Specimens: Packaging Instruction 6H.
- b. Special conditions: The following items are permitted to be mailed within specific quantity limits and packaging conditions specified in 346.3:
 - (1) Infectious substances.
 - (2) Biological products.
 - (3) Cultures and stocks.
 - (4) Exempt human or animal specimens.
 - (5) Patient specimens.
 - (6) Regulated medical waste.
 - (7) Sharps medical waste.
 - (8) Toxins.
 - (9) Used health care products.

[Delete the text of 346.311 in its entirety.]

346.32 Division 6.2, Infectious Substances Packaging, Marking, Labeling, and Documentation

* * * * *

Exhibit 346.32

Packaging References for Mailable Materials, Infectious Substances (Hazard Class 6, Division 6.2)

* * * * *

[Revise the last sentence of footnote 2. of Exhibit 346.32 to read as follows:]

- 2. ***A Division 6.1 toxin that can qualify as Limited Quantity surface is permitted when packaged in accordance with 346.31(b) or 346.22.

* * * * *

346.327 Exempt Human or Animal Specimens

* * * * *

[Revise the text of item a. to read as follows:]

- a. **Primary Receptacle Requirements:** A single primary receptacle must not contain more than 500 milliliters (ml) of a liquid specimen or 500 grams of a solid specimen. Multiple primary receptacles may be enclosed within a single secondary packaging, provided the combined volume does not exceed 500 ml (for liquids) or 500 grams (for solids). Each primary receptacle must be leakproof or sift proof and individually wrapped or separated with material sufficient to protect it and contain or absorb the total amount of liquid or solid in case of leakage or breakage.

* * * * *

347 Radioactive Materials (Hazard Class 7)

* * * * *

347.2 Mailability

[Add the following new section number and title between the section number and title of 347.2 and the current introductory text of 347.2 to become the section number and title of the current introductory text, and renumber current sections 347.21 and 347.22 to new 347.22 and 347.23, respectively:]

347.21 General

* * * * *

[Revise item a. to read as follows:]

- a. **International Mail:** Radioactive materials bearing or required to bear a Class 7 Radioactive White-I, Radioactive Yellow-II, or Radioactive Yellow-III hazardous materials warning label (refer to Exhibit 325.3)

are prohibited. Specific admissibility requirements for international shipments of radioactive material are detailed in 622.3 and IMM 135.5. The radioactive activity content must not exceed one-tenth of the limits outlined in Exhibit 347.23.

* * * * *

347.23 Mailable Radioactive Materials

[Revise the introductory text of renumbered 347.23 to read as follows:]

As stated in 347.21, the only categories of radioactive material that are mailable in international mail or in domestic mail via surface transportation are those that do not have an activity level exceeding the limits in Exhibit 347.23 and are eligible under 49 CFR to be shipped as excepted packages for:

* * * * *

[Renumber current Exhibit 347.22 to new Exhibit 347.23.]

* * * * *

347.5 Emergency Procedures

[Revise the text of 347.5 to read as follows to correct bullet formatting:]

The following apply:

- a. In cases where a nonmailable package of radioactive material is found in the mailstream, the following procedures must be immediately followed:
 - (1) Place the package at least 15 feet from other mail or personnel. Under no circumstances may the package be dispatched.
 - (2) Report the mailpiece to the appropriate officials in accordance with POM 139.117 and 139.118, as applicable.
 - (3) If a package of radioactive material is damaged or is leaking, immediately contact the facility safety officer (or designee). The safety officer will:
 - (a) Follow the appropriate spill-response procedures.
 - (b) Isolate the area around the damaged package to prevent contact with people.
 - (c) Isolate any conveyor, belt, chute, or other equipment or conveyance, including mailbags, in which the radioactive material has leaked or may have leaked.
 - (d) Rope off or guard the isolated area whenever practical.
 - (e) Place a temporary sign indicating the presence of radioactive materials and bearing a warning to stay beyond the edge of the roped area.

- b. The local postmaster or facility manager must immediately request the assistance of qualified persons to check radiation hazards and to supervise the salvage and decontamination. This assistance may be received from the mailer (if known) or from one of the following contacts:

- (1) Nearest office of the Department of Energy (DOE) as listed in Exhibit 347.5 or DOE’s national emergency number and website:

DEPARTMENT OF ENERGY (DOE)
EMERGENCY OPERATIONS CENTER
Telephone: 202-586-8100
doe.gov

- (2) Local health, fire, or police departments.
- (3) Local civil defense authorities.
- (4) Nearby military installations.
- (5) Nearby scientific laboratories.
- (6) The Nuclear Regulatory Commission, the Environmental Protection Agency, and the Federal Emergency Management Agency, whose national emergency numbers and websites are as follows:

NUCLEAR REGULATORY COMMISSION (NRC)
Telephone: 301-816-5100
nrc.gov

ENVIRONMENTAL PROTECTION
AGENCY (EPA)
NATIONAL RESPONSE CENTER
Telephone: 800-424-8802
epa.gov

FEDERAL EMERGENCY MANAGEMENT
AGENCY (FEMA)
NATIONAL EMERGENCY COORDINATION
CENTER
Telephone: 202-646-2400
fema.gov

* * * * *

6 International Mail

* * * * *

62 Dangerous Goods: International Mail

* * * * *

[Revise the title of 621 to read as follows:]

621 General Requirements

[Delete section number 621.1 and its title “Mailing Conditions” and place section 621.1’s text under the section number and title of 621.]

[Revise the text of 621 to read as follows:]

In international commerce, hazardous materials are referred to as “dangerous goods.” Almost all dangerous materials are prohibited in international mail. The only mailable dangerous materials are the following:

- a. Certain infectious substances;
- b. Excepted quantities of radioactive material that are allowed in domestic mail;
- c. Certain magnetized materials; and
- d. Certain lithium and lithium-ion batteries.

Exhibit 621 provides a summary of the types of dangerous materials that are eligible for mailing in international mail.

The few types of dangerous materials that are generally permitted in international mail may be further restricted by the mailing limitations imposed by an individual country. Because individual countries have unique prohibitions and restrictions, it is always necessary to consult the ICL in the IMM to be certain that an otherwise mailable dangerous material is acceptable for shipment to a specific country.

* * * * *

[Renumber current Exhibit 621.1 to new Exhibit 621.]

Exhibit 621

DOT Hazard Classes and Mailability for International Mail

[Revise the text of renumbered Exhibit 621 to read as follows:]

Hazard Class	Name of Hazard Class (and Division when applicable)	International Mail APO/FPO/DPO	
		Air Transportation	Surface Transportation
1	Explosives	Prohibited	Prohibited
2	Gases	Prohibited	Prohibited
3	Flammable and Combustible Liquids	Prohibited	Prohibited
4	Flammable Solids	Prohibited	Prohibited
5	Oxidizing Substances, Organic Peroxides	Prohibited	Prohibited
6	Division 6.1: Toxic Substances	Prohibited	Prohibited
	Division 6.2: Infectious Substances	Mailable per limits in 622.2 and IMM 135.1.	Prohibited
7	Radioactive Materials	Mailable per limits in 622.3 and IMM 135.5.	Prohibited
8	Corrosives (liquids and solids)	Prohibited	Prohibited
9	Miscellaneous Hazardous Materials	Prohibited, except for magnetized materials per 622.4 and lithium batteries per 622.5.	Prohibited, except for magnetized materials per 622.4 and lithium batteries per 622.5.

* * * * *

622 Mailable Dangerous Goods

* * * * *

622.2 Biological Substances (Division 6.2)

[Revise the text of items d., e., and f. to read as follows, respectively:]

- d. **Mailability and Packaging Requirements:** Mailable infectious substances must be prepared according to 346.321 and *Packaging Instruction 6C*.
- e. **Volume and Packaging Limits:** Mailable infectious substances are limited to 50 milliliters for liquids or 50 grams for solids per mailpiece. Packaging must comply with 346.321 and *Packaging Instruction 6C* in Appendix C, and the requirements in IMM 135.31 and 135.41.
- f. **Nonregulated and Exempt Specimens:** Nonregulated materials defined in 346.325 and exempt human or animal specimens defined in 346.12(d) are mailable between eligible institutions (see item c.)

when properly packaged in accordance with Packaging Instructions 6G and 6H in Appendix C and comply with 346.325 through 346.327 and IMM 135.42.

* * * * *

622.3 Radioactive Materials (Class 7)

[Revise the text of item b. to read as follows:]

- b. **Mailability and Packaging Requirements:** Mailable radioactive materials must be packaged in accordance with *Packaging Instruction 7A* in Appendix C and the requirements specified in IMM 135.5.

* * * * *

[Revise the text of item f. to read as follows:]

- f. **Labeling and Marking:** The sender is responsible for supplying and affixing the following information to the address side of the package:
 - (1) Radioactive Materials, Quantities Permitted for Movement by Post.”

- (2) "Return to Sender in Case of Nondelivery."
- (3) A white package label with the French text "Matières Radioactives."

* * * * *

Appendix C

USPS Packaging Instructions for Mailable Hazardous Materials

* * * * *

USPS Packaging Instruction 6C

Category B Infectious Substances

* * * * *

Mailability

- International Mail: Mailable only when:
[Delete the last bullet under "International Mail: Mailable only when:" in its entirety.]

* * * * *

Outer Packaging

* * * * *

[Revise the text of the third bullet to read as follows:]

- A poly-type mailer bag covering may be acceptable as the outer packaging provided triple packaging is complete, the selvage edge of the wrapping is less than 2 inches, and the required markings and address information are applied both on the interior rigid box and the additional outer polybag wrapping.
Note: A poly-type mailer bag is not permitted for use as an outer package in international mail.

* * * * *

USPS Packaging Instruction 6F

Forensic Material

* * * * *

Mailability

- International Mail: Mailable only when:
[Revise the bulleted text of the first bullet "International Mail: Mailable only when:" to read as follows:]
 - The conditions in 622.2 are met.
 - They are permitted by the destination country. (Refer to the Individual Country Listing in the IMM.)
 - They are presented by and to authorized laboratories designated in "International Mail" below in this Packaging Instruction.
 - They meet the Category B infectious substance definition in 346.12(a).

- The director, Product Classification, has granted written approval.
- They are triple-packaged (refer to below), meeting the packaging requirements in 49 CFR § 173.199.

* * * * *

USPS Packaging Instruction 6H

Exempt Human or Animal Specimens

* * * * *

Mailability

[Revise the text of the first bullet, "International Mail: Mailable," to read as follows:]

- International Mail: Mailable. They are not subject to regulation as hazardous materials but are required to be sent between eligible institutions and when presented for mailing, they must be prepared following 346.327, 622.2, and as outlined below.

* * * * *

Required Packaging

* * * * *

Secondary Packaging

* * * * *

[Delete in its entirety the second bullet under "Secondary Packaging."]

* * * * *

[Add a new "Outer Packaging" section after "Secondary Packaging" and before "Marking/Documentation" to read as follows:]

Outer Packaging

- The primary and secondary packaging must be enclosed within rigid outer packaging (see 339.4).
- At least one side of the outer packaging must measure a minimum of 3.9 inches by 3.9 inches (100 millimeters x 100 millimeters).

Marking/Documentation

[Revise the text in the section "Marking/Documentation" to read as follows:]

- Labels and markings must be placed on the address side of the mailpiece unless specified differently in 221.1 and 325.1.
- The outer packaging must be marked on the address side with "Exempt Human Specimen" or "Exempt Animal Specimen," as appropriate.
- Shipping documentation is not required.

USPS Packaging Instruction 7A

Radioactive Materials

* * * * *

Mailability

[Revise the text of the first bullet, "International Mail," to read as follows:]

- International Mail: Only as permitted in 622.3 and IMM 135.5, and when sent under the following conditions:
 - Sent only to countries that expressed a willingness to accept them. (Refer to the Individual Country Listings in the IMM.)
 - APO/FPO/DPO destinations are subject to the conditions prescribed by the U.S. Department of Defense (DOD) as listed in "Overseas Military/Diplomatic Mail" in the *Postal Bulletin*.
 - Mailable radioactive materials may not have an activity content that exceeds one-tenth of the limits specified in Exhibit 347.22 and must not contain uranium hexafluoride.
 - The sender must apply his or her name and address and list the contents of the item on the inner wrapping.
 - Mailable radioactive materials may not have an activity content that exceeds one-tenth of the limits specified in Exhibit 347.22.
 - Each shipment must comply with both the International Atomic Energy Agency Regulations and the specifications in 347 and this section.
 - The sender and recipient of each radioactive materials shipment must receive prior authorization from the appropriate regulatory authorities within their countries.

- The address side of each mailpiece must bear the following endorsements in bold letters: "Return to Sender in Case of Nondelivery" and "Radioactive Materials, Quantities Permitted for Movement by Post" and the applicable UN-number (i.e., UN2909, 2910 or 2911)

* * * * *

Index

* * * * *

I

* * * * *

Infectious substances, 346

* * * * *

[Revise the reference "Mailable material, 346.311" to read as follows:]

Mailable material, 346.31(b)

* * * * *

R

* * * * *

Radioactive materials, 347

[Revise the reference "Articles and instruments, Exhibit 347.22" to read as follows:]

Articles and instruments, Exhibit 347.23

* * * * *

The Postal Service will incorporate these revisions into the next edition of the online Publication 52, which is available via Postal Explorer® at pe.usps.com.

Organization Information

Domestic Mail

Labeling List Changes

Effective May 1, 2026, the Postal Service™ will revise Labeling List(s) L007, L012, L014, L016, L051, L201, and L606 to reflect changes in mail processing operations. Mailers are expected to label according to these revised lists for mailings inducted on or after the May 1, 2026, effective date through the June 30, 2026, expiration date.

Labeling Lists

L007 5-Digit Scheme – Periodicals, Standard Mail, and Package Services Flats in Bundles

* * * * *

Newly Added

Column A Destination ZIP Codes	Column B Label Container To (Added To)
02018	PLYMOUTH MA 02361
02020	PLYMOUTH MA 02361
02040	PLYMOUTH MA 02361
02041	PLYMOUTH MA 02361
02047	PLYMOUTH MA 02361
02051	PLYMOUTH MA 02361
02055	PLYMOUTH MA 02361
02059	PLYMOUTH MA 02361
02060	PLYMOUTH MA 02361
02065	PLYMOUTH MA 02361
02070	PLYMOUTH MA 02361
02325	PEMBROKE MA 02359
02327	PLYMOUTH MA 02361
02334	PLYMOUTH MA 02361
02337	PEMBROKE MA 02359
02345	PLYMOUTH MA 02361
02348	HOLBROOK MA 02343
02349	HOLBROOK MA 02343
02350	PEMBROKE MA 02359
02355	PLYMOUTH MA 02361
02357	PEMBROKE MA 02359
02358	PEMBROKE MA 02359
02366	PLYMOUTH MA 02361
02381	PLYMOUTH MA 02361

* * * * *

L012 5-Digit ZIP Scheme Combination

Changes

Column A Destination ZIP Codes	Column B Label Container To (Change From)	Column B Label Container To (Change To)
20002	WASHINGTON DC 20006	WASHINGTON DC 20004
20003	WASHINGTON DC 20003	WASHINGTON DC 20032
20009	WASHINGTON DC 20004	WASHINGTON DC 20011
20010	WASHINGTON DC 20010	WASHINGTON DC 20015

Column A Destination ZIP Codes	Column B Label Container To (Change From)	Column B Label Container To (Change To)
20012	WASHINGTON DC 20010	WASHINGTON DC 20015
20015	WASHINGTON DC 20010	WASHINGTON DC 20015
20020	WASHINGTON DC 20020	WASHINGTON DC 20006
20024	WASHINGTON DC 20003	WASHINGTON DC 20032
20032	WASHINGTON DC 20020	WASHINGTON DC 20032
20036	WASHINGTON DC 20003	WASHINGTON DC 20006

Newly Added

Column A Destination ZIP Codes	Column B Label Container To (Added To)
20001	WASHINGTON DC 20015
20011	WASHINGTON DC 20011

* * * * *

L014 5-Digit ZIP Scheme Combinations for Hubs

Due to the extensive number of changes to L014, these changes will not be published in the *Postal Bulletin*. The changes effective May 1, 2026, for the L014 can be found in Postal Pro at the following link: postalpro.usps.com/operations/labeling-lists/changes-may-2026. All other EELs changes effective May 1, 2026, can be found in Postal Pro as well.

L016 3-Digit ZIP Code Prefix Groups – SCF Flat Sortation

Changes

Column A 3-Digit ZIP Code Prefix Group	Column B Label To (Change From)	Column B Label To (Change To)
566	SCF SAINT CLOUD MN 563	SCF MINNEAPOLIS MN 553
925	SCF MORENO VALLEY CA 925	SCF SN BERNARDINO CA 923
955	SCF EUREKA CA 955	SCF SAN FRANCISCO CA 940

* * * * *

L051 DSCF for Parcel Select / Market-Dominant Parcels

Changes

Column A Destination ZIP Codes	Column B Label To (Change From)	Column B Label To (Change To)
020	SCF MIDDLESEX-ESX MA 018	SCF BROCKTON MA 023
023	SCF MIDDLESEX-ESX MA 018	SCF BROCKTON MA 023
103	SCF QUEENS NY 103	SCF BROOKLYN NY 112
107	DIS WESTCHESTER NY 105	DIS ROCKLAND NY 109
108	DIS WESTCHESTER NY 105	DIS ROCKLAND NY 109
109	DIS WESTCHESTER NY 105	DIS ROCKLAND NY 109
337	SCF MANASOTA FL 342	SCF TAMPA FL 335
434	DIS METROPLEX MI 480	SCF TOLEDO OH 434
435	DIS METROPLEX MI 480	SCF TOLEDO OH 434
436	DIS METROPLEX MI 480	SCF TOLEDO OH 434
541	DIS OSHKOSH WI 549	SCF GREEN BAY WI 541
542	DIS OSHKOSH WI 549	SCF GREEN BAY WI 541
543	DIS OSHKOSH WI 549	SCF GREEN BAY WI 541
757	SCF NORTH TEXAS TX 750	SCF DALLAS TX 752
758	SCF NORTH TEXAS TX 750	SCF DALLAS TX 752
776	SCF NORTH HOUSTON TX 773	SCF BEAUMONT TX 776
777	SCF NORTH HOUSTON TX 773	SCF BEAUMONT TX 776
976	SCF PORTLAND OR 970	SCF MEDFORD OR 975

* * * * *

L201 Periodicals Origin Split and First-Class Mail Mixed ADC/AADC

Due to the extensive number of changes to L201, these changes will not be published in the *Postal Bulletin*. The changes effective May 1, 2026, for the L201 can be found in Postal Pro at the following link: postalpro.usps.com/operations/labeling-lists/changes-may-2026. All other EELs changes effective May 1, 2026, can be found in Postal Pro as well.

L606 5-Digit Scheme – Standard Mail, First-Class Mail, and Package Services Parcels

Changes

Column A Destination ZIP Codes	Column B Label Container To (Change From)	Column B Label Container To (Change To)
85036	PHOENIX AZ 85034	PHOENIX AZ 85008
85040	PHOENIX AZ 85008	PHOENIX AZ 85034
85041	PHOENIX AZ 85008	PHOENIX AZ 85034
85042	PHOENIX AZ 85008	PHOENIX AZ 85034
85066	PHOENIX AZ 85008	PHOENIX AZ 85034

Newly Added

Column A Destination ZIP Codes	Column B Label Container To (Added To)
06810	DANBURY CT 06810
06811	DANBURY CT 06811
06812	DANBURY CT 06811
06813	DANBURY CT 06810
07430	MAHWAH NJ 07430
07495	MAHWAH NJ 07430
18103	ALLENTOWN PA 18103
18104	ALLENTOWN PA 18103
18106	ALLENTOWN PA 18103
18109	ALLENTOWN PA 18101
34714	CLERMONT FL 34714
34715	CLERMONT FL 34714

Deleted

Column A Destination ZIP Codes	Column B Label Container To (Deleted From)
05478	SAINT ALBANS VT 05478
05479	SAINT ALBANS VT 05478
07401	ALLENTOWN NJ 07401
07458	ALLENTOWN NJ 07401

– Logistics, Network Development, and Support, Network Operations, 4-16-26

Environmental Compliance

Stormwater Retention and Detention Basins

It is important for USPS® sites with stormwater basins to follow required procedures to ensure compliance with environmental regulations. This may include permits as well as design and specific maintenance and operating standards.

Stormwater basins are human-made depressions that manage stormwater runoff to prevent flooding, erosion, and discharge of pollutants to surface waters. *Retention* basins typically have a permanent pool of water, while *detention* basins temporarily store water after a storm.

Routine preventive maintenance is required to keep stormwater basins functioning properly. This includes managing surrounding landscaping, conducting regular inspections, and taking prompt corrective actions for any issues identified. An inspection checklist can be found at blue.usps.gov/sustainability/environmental/_docs/forms/form-sw-ret-det-inspectionchecklist.docx.

[form-sw-ret-det-inspectionchecklist.docx](http://blue.usps.gov/sustainability/environmental/_docs/forms/form-sw-ret-det-inspectionchecklist.docx). The Facilities Response Line (855-444-6375) can assist with corrective actions involving non-routine repairs.

Sites with stormwater basins must adhere to the Postal Service Zero Discharge Policy, which prohibits the release of any pollutants into stormwater systems. Only light-duty lawn equipment may operate on embankments or in basins. Pesticides must not be applied within or directly adjacent to basins. Landscape waste must not be placed in basins.

For more information about stormwater retention and detention basins, go to the Environmental Compliance Bulletin/Standard Work Instruction at blue.usps.gov/sustainability/environmental/_pdf/bp-sw-ret-det.pdf or contact your USPS Environmental Specialist at blue.usps.gov/sustainability/regional-environmental-compliance-all.htm.

— Environmental Affairs and
Corporate Sustainability, 4-16-26

Human Resources

RIF Competitive Areas for the Postal Service

The Postal Service™ divides its organizational structure into multiple competitive areas for reduction in force (RIF) and transfer of function (TOF) purposes. Competitive areas are established based on organizational factors (separate operation, work function, staff, and personnel management authority) and geographical location factors. During the RIF process, an employee can only be reassigned to a position in his or her competitive area. Listed below are the USPS® competitive areas as of April 16, 2026.

Organization	Office	Competitive Area
Headquarters	Office of the Postmaster General Chief Executive Officer	Separate
	Office of Deputy PMG & Chief Operating Officer & Chief Human Resources Exec VP Officer	Separate
	Office of the Judicial Officer	Separate
	Office of the Chief Postal Inspector	Separate
	Each Executive Vice President's Organization	Separate
	Each Vice President's and Senior Vice President's Organization ¹	Separate
	Office of the Board of Governors	Separate

Organization	Office	Competitive Area	
Headquarters – Related Organization – Organizational Type	Each Human Resources Area Office	Separate	
	Each Labor Relations Area Office	Separate	
	Each Area and Region Budget Office	Separate	
	Each Statistical Program Data Collection Region	Separate	
	Each Field Accounting Team (Grouped by Area) ²	Separate	
	Each Tier 2 Information Technology Support Operations Area	Separate	
	Each Customer Relations Area	Separate	
	Each Business Acceptance Performance Team	Separate	
	Each Accounting Service Center	Separate	
	Each Field Communications Center	Separate	
	Each Equal Employment Opportunity (EEO), Compliance and Appeals Region ³	Separate	
	Each Field Employment Law Office	Separate	
	Each Inspection Service DCI Field Operations Unit ³	Separate	
	Each Inspection Service Investigations Service Center ³	Separate	
	Each Inspection Service Division ³	Separate	
	Each Sales Field Office (Grouped by Region)	Separate	
	Each Customer Care Center	Separate	
	Each Vehicle Maintenance Facility	Separate	
	Each Area Address Support and Accountability Team	Separate	
	Each Independent Surface Transfer Center	Separate	
Each International Service Center	Separate		
Unique Organization – Separate Competitive Area	Retail and Delivery Operations Support Teams ⁴	Separate	
	Continuity and Preparedness Unit	Separate	
	Asset Management Operations, Topeka, KS	Separate	
	Human Resources Shared Service Center, Greensboro, NC	Separate	
	National Center for Employee Development, Norman, OK	Separate	
	Stamp Fulfillment Services, Kansas City, MO	Separate	
	Mail Recovery Center, Atlanta, GA	Separate	
	EEO Services, Tampa, FL	Separate	
	National Customer Retention Teams ⁵	Separate	
	Remote Encoding Center, Salt Lake City, UT	Separate	
	Unique Organization – Part of Another Competitive Area	Stamp Distribution Center Dulles, VA	VP Marketing, Stamp Fulfillment Services, Kansas City, MO
		Career Development Division, Inspector in Charge, Potomac, MD	Inspection Service, National HQ, Washington, DC
Technical Service Division, Inspector in Charge, Dulles, VA		Inspection Service, National HQ, Washington, DC	
William F. Bolger Center for Leadership Development, Potomac, MD		VP Organization Development, Washington, DC	
Pricing and Classification Service Center, New York, NY		VP Product Solutions, Washington, DC	
Forensic Laboratory Services, Dulles, VA		Inspection Service, National HQ, Washington, DC	
Each Processing and Distribution Annex		Host Processing and Distribution Center	
Each Retail and Delivery Station and Branch		Postmaster’s Organization	

Organization	Office	Competitive Area
Field Organizations	Each Postmaster's Organization	Separate
	Each Retail and Delivery Area Office	Separate
	Each Retail and Delivery District Office	Separate
	Each Processing Region Office	Separate
	Each Logistics Regional Office	Separate
	Each Logistics Local Office	Separate
	Each Network Distribution Center	Separate
	Each Regional Transfer Hub	Separate
	Each Processing and Distribution Center	Separate
	Each Mail Processing Facility	Separate
	Each Regional Processing Distribution Center	Separate
	Each Local Processing Center	Separate

1. Within the VP Supply Management organization, each local commuting area is its own Competitive Area. The local commuting areas are Washington, DC; Merrifield, VA; Greensboro, NC; Aurora, CO; Philadelphia, PA; Dallas, TX and Plano, TX; Carol Stream, IL; Windsor, CT; and Topeka, KS.
2. Field Accounting Area teams will include the corresponding Area Time and Attendance Compliance teams.
3. Some units located in the Washington, DC, commuting area and Headquarters-domiciled employees may be part of the parent national Headquarters organization Competitive Area.
4. Retail and Delivery Operations Support Teams include Delivery Field Operations Support, Retail and Post Office Field Operations Support, National Operations Command Center, and Level One Office Support organizations.
5. National Customer Retention Teams are located in Atlanta, GA; Akron, OH; Dallas, TX; Dayton, OH; Philadelphia, PA; Fox Valley, IL; Boston, MA; San Francisco, CA; Saint Petersburg, FL; Tampa, FL; Portland, OR; and Seattle, WA.

— Organization Design,
Organization Development, 4-16-26

Information Security

CyberSafe Training for Contractors Course — Due June 6, 2026

The FY26 CyberSafe Fundamentals for Contractors course is available now and must be completed by **June 6**. Contractors can access the course through [Training \(Contractor Access Only\)](#). By taking the assigned CyberSafe training course this year, contractors will learn how to protect critical USPS information from cyber threats. The course provides the basic skills and knowledge necessary for adhering to cybersecurity practices and policy to protect USPS electronic information.

Test Out of Course Option

This year, there is a one-time test out option for those who score 100 percent. Contractors who do not complete the course by the **June 12** deadline will have limited access to ACE systems until the course is completed.

Note: Outlook calendar holds will be added near the due date to the calendars of contractors who do not complete the training.

Threats to digital information are growing in frequency and sophistication worldwide. Protecting USPS® employees, customers, and data from these threats is a priority for the Postal Service™. Everyone has a role to play in protecting this data; contractors to do their part to protect critical Postal Service data by completing the mandatory, annual CyberSafe training course.

For more information, go to the CyberSafe training page on *Blue* at blue.usps.gov/cyber/training.htm or contact CyberSafeComms@usps.gov.

— Corporate Information Security Office,
Chief Information Officer, 4-16-26

Verify the Call, Shield Your Data and the Network

The Postal Service™ reminds employees and contractors to beware of a cybercrime known as vishing — a phone call or voicemail scam. Cybercriminals use vishing scams to obtain sensitive information, including passwords, financial documents, or USPS® system and organizational data. They often research their targets to impersonate legitimate employees or executives. According to the United States Postal Inspection Service™, these cybercriminals use vishing to impersonate the voice of USPS employees and executives.

Falling for a vishing scam on your USPS-issued mobile device can result in stolen credentials, identity theft, and significant damage to the Postal Service's reputation. Business operations could also be disrupted costing the Postal Service time and money.

Cybersafe at USPS® recommends following these steps to avoid a vishing scam:

- **Don't answer the call.** When possible, avoid answering calls from unknown numbers.
- **Verify the call.** If you need to confirm that a call is legitimate, use a known or official number to follow up.
- **End the call.** If a call seems suspicious or confusing, hang up immediately.
- **Report the call.** Contact the organization being impersonated or the Postal Inspection Service to investigate the activity.

If you receive a call from someone impersonating USPS personnel, send an email to the Inspection Service's Cyber Crime Unit at ISCCU@usps.gov. Include your name and contact information, the name and contact information used by the scammer, and a summary of phone calls.

— Corporate Information Security Office,
Chief Information Officer, 4-16-26

Stamp Services

Stamp Announcement 26-18: Treasures of the Revolutionary Era Prestige Booklet



© 2026 USPS

On May 23, 2026, in Boston, MA, the Postal Service™ will issue the *Treasures of the Revolutionary Era* prestige booklet (Item Number 894700) featuring 20 commemorative stamps (Forever® priced at the First-Class Mail® rate), in ten designs, on two pressure-sensitive adhesive (PSA) sheets of 10. The prestige booklet will go on sale nationwide May 23, 2026, and must not be sold or canceled before the first-day-of-issue.

Marking the 250th anniversary of the American Revolution, this prestige booklet highlights 10 compelling objects from the era, offering a vivid way to experience the symbols and stories that helped shape the United States. It contains 20 exclusive First-Class Forever® stamps, arranged in two identical blocks of 10. The objects include an inscribed teapot, paper currency, the Commander-in-Chief Flag, a watercolor depicting George Washington's varied army, a powder horn, a spinning wheel, a map of the Battle of Yorktown, the Badge of Military Merit, a treaty wampum belt, and a patriotic signboard. Art director Ethel Kessler designed both the stamps and the prestige booklet.

Not Available to Post Offices: Item 894700, Treasures of the Revolutionary Era Prestige Booklet (Priced at \$28.95) Includes Two Sheets of 10 Stamps

Stamp Fulfillment Services will not make an automatic push distribution to Post Offices as these prestige booklets will only be available to order through The Postal Store® at usps.com/shop.

How to Order the First-Day-of-Issue Postmark

The first-day-of-issue postmark is a postmark notating the day a stamp is first authorized for use by the Postal Service™. Customers have 120 days to obtain the first-day-of-issue postmark by mail. All requests for first-day-of-issue postmarks (Traditional or Digital Color Postmark)

must be sent to the following address with the choice of Traditional or Digital Color Postmark identified. All orders must be postmarked by September 26, 2026.

FDOI – Treasures of the Revolutionary Era Stamps
USPS Stamp Fulfillment Services
8300 NE Underground Drive, Suite 300
Kansas City, MO 64144-9900

Traditional Black and White Postmarks

Customers may purchase the prestige booklet at The Postal Store website at usps.com/shop. They must affix the stamps to envelopes of their choice, address envelopes (to themselves or others), and place them in a larger envelope and mail to the above address.

After applying the first-day-of-issue postmark, the Postal Service will return the envelopes through the mail. There is no charge for the postmark up to a quantity of 50. There is a 5-cent charge for each additional postmark over 50. All orders must be postmarked by September 23, 2026.

Customers can also submit collectable paper items or memorabilia of their choice for a black and white cancellation. The request must include packaging large enough to accommodate their canceled items along with sufficient postage affixed for the return of their postmarked item.

If the canceled item is not mailable by First-Class, and return packaging with postage is not provided, the order must include a way to contact the customer for payment. Payment for quantities greater than 50 cancels and/or postage for shipping must be submitted by check, money order, or credit card.

Digital Color Postmarks

Only select stamp issues offer a digital color postmark. Digital color postmarks can only be affixed to paper products. Customers may submit #6 or #10 envelopes constructed of paper rated as "laser safe." The Postal Service™ recommends envelopes of 80-pound Accent Opaque, acid-free, 9/16-inch side seams with no glue on the flap. The maximum size of all digital color postmarks is 2 inches (vertically) by 4 inches (horizontally). Allow sufficient space on the envelope to accommodate the postmark. Do not use self-adhesive labels for addresses on the envelope. Two test envelopes must be included. There is a 50-cent charge per postmark at the time of servicing. Customers must submit a check, money order, or credit card for payment.

Article continues on page [41](#).

Pull-Out Information

Fraud

Missing, Lost, or Stolen U.S. Money Order Forms

Do Not Cash — Upon Receipt, Notify Local Postal Inspectors

Provide this listing to all Postal Service™ employees responsible for accepting and cashing postal money orders. Destroy all interim notices when the numbers listed appear in the *Postal Bulletin*. The new money order serial numbers consist of the first 10 digits. The eleventh digit is a check digit only.

Do not cash outdated money orders **104 151 601 to 692 600 000**. Advise holders to send invalid money orders to Canada Post Corporation, Ottawa, Canada K1A 0B1. Check for altered dollar amounts by holding money orders to the light.

010 001 0200 to 0299	035 035 4337 to 4399	066 648 2880 to 2899	094 580 7062 to 7099
010 504 1932 to 1999	037 312 7500 to 7599	066 787 3639 to 3699	094 639 4200 to 4299
011 582 1889 to 1899	037 706 9578 to 9599	066 845 7500 to 9999	095 070 7186 to 7199
011 588 2900 to 3099	037 805 3677 to 3699	067 093 3869 to 3899	095 076 8300 to 8399
012 441 0784 to 0799	037 909 5490 to 5499	068 895 0334 to 0399	095 354 6864 to 6899
012 579 5675 to 5699	037 931 4660 to 4699	070 724 4488 to 4499	097 224 1350 to 1599
013 289 6176 to 6199	039 145 6521 to 6595	070 841 9181 to 9199	100 160 3800 to 3899
013 610 0014 to 0099	040 024 3901 to 3999	070 844 2546 to 2599	104 667 6400 to 6499
014 932 1000 to 1099	040 674 7100 to 7199	070 916 1340 to 1399	104 876 8937 to 8999
014 972 0800 to 0899	040 688 8816 to 8899	071 047 5768 to 5799	112 049 4413 to 4499
015 363 0065 to 0099	041 299 6752 to 6799	071 179 9800 to 9899	112 870 9765 to 9799
017 028 3200 to 3299	041 623 8889 to 8899	071 386 3682 to 3699	113 319 2000 to 2099
018 569 5333 to 5399	041 803 6565 to 6599	071 507 6840 to 6899	114 402 3850 to 3899
018 986 5264 to 5299	043 129 1968 to 1997	072 045 9641 to 9699	114 866 5368 to 5397
019 518 2814 to 2899	043 205 5922 to 5999	072 675 8287 to 8299	116 154 2800 to 2899
020 698 5159 to 5199	044 087 3457 to 3499	073 763 0867 to 0876	116 986 4400 to 4499
020 844 7307 to 7399	044 087 4000 to 4099	073 763 0878 to 0887	117 175 1647 to 5169
020 972 8948 to 8999	044 226 2487 to 2512	073 763 0889 to 0898	117 951 4687 to 4699
022 021 9110 to 9181	044 306 4200 to 4299	077 617 5481 to 5499	117 951 5200 to 5299
022 037 1411 to 1499	044 306 4370 to 4599	077 999 4001 to 4090	119 786 3051 to 3064
022 527 9201 to 9210	045 524 4121 to 4298	078 174 4475 to 4499	119 815 8961 to 6199
022 529 1882 to 1899	046 800 9870 to 9899	078 219 4931 to 4999	119 850 7400 to 7499
023 637 7169 to 7199	047 352 4000 to 4099	078 250 4756 to 4799	119 850 7700 to 7999
024 380 4100 to 4199	048 383 7650 to 7659	078 823 8312 to 8399	121 634 0460 to 0499
024 496 6870 to 6896	048 396 3647 to 3699	079 374 0300 to 2499	122 451 9879 to 9899
025 092 0987 to 0999	051 142 0755 to 0799	079 807 2342 to 2399	122 714 6805 to 6900
025 369 5535 to 5599	051 774 8857 to 8899	082 721 0228 to 0254	124 916 0304 to 0499
025 729 1151 to 1199	051 781 2875 to 2885	083 140 5000 to 7499	126 423 0136 to 0169
025 729 1643 to 1799	051 977 7010 to 7023	083 784 8886 to 8899	127 500 2328 to 2399
026 492 3180 to 3199	052 058 7115 to 7199	083 913 6915 to 6999	160 901 2254 to 2299
027 361 0430 to 0499	054 450 1130 to 1167	084 478 3920 to 3999	161 103 6581 to 6599
027 369 4482 to 4495	057 670 0563 to 0599	086 000 8271 to 8299	161 194 2857 to 2899
027 671 8762 to 8776	058 187 3836 to 3899	086 798 3840 to 3849	162 032 4447 to 4499
027 787 9886 to 9899	058 523 3003 to 3099	088 404 4472 to 4499	163 257 1085 to 1099
027 965 9487 to 9499	058 591 1153 to 1299	088 404 5584 to 5699	164 359 2406 to 2499
028 100 8069 to 8099	058 895 3746 to 3799	088 757 8688 to 8699	166 101 1433 to 1499
028 191 1852 to 1999	059 986 0814 to 0899	088 757 9400 to 9499	167 555 5201 to 5212
028 850 3000 to 3199	060 406 7650 to 7699	089 358 2248 to 2257	167 555 5214 to 5299
029 510 1500 to 1599	063 491 8122 to 8199	090 663 9678 to 9684	169 618 6274 to 6299
030 687 0903 to 0999	063 916 9968 to 9999	091 818 0071 to 0099	171 806 6878 to 6893
030 701 3442 to 3499	064 091 4500 to 4599	093 106 9346 to 9355	173 639 4685 to 4699
031 077 4507 to 4799	065 170 0471 to 0499	093 203 0500 to 0599	174 238 2779 to 2799
032 295 7500 to 9999	065 255 7909 to 7999	093 684 3630 to 3699	174 281 9347 to 9399
034 394 1000 to 1099	065 392 6345 to 6399	094 081 5074 to 5099	175 251 2600 to 0699
034 943 0400 to 0799	066 099 2014 to 2099	094 216 2555 to 2599	176 281 7937 to 7950

176 281 7963	to	7999	219 568 7435	to	7456	252 612 3683	to	3699	258 405 4200	to	4299
176 731 6586	to	6599	219 568 7469	to	7487	252 469 2125	to	2199	258 405 4600	to	4699
178 254 5000	to	9999	221 316 5757	to	5799	252 833 3286	to	3297	258 405 5600	to	5699
178 881 9900	to	9999	223 476 3914	to	3999	253 470 3948	to	3999	258 405 5700	to	5799
180 031 2089	to	2098	223 565 4921	to	4957	253 565 7400	to	7499	258 405 5800	to	5899
180 403 7723	to	7741	223 565 4979	to	4999	254 252 2800	to	2899	258 405 5900	to	5999
180 428 4580	to	0599	224 636 4745	to	4765	254 252 2900	to	2999	258 405 6000	to	6099
182 368 7544	to	0599	224 636 4776	to	4799	254 252 3000	to	3099	258 405 6100	to	6199
182 475 3229	to	3258	224 636 4855	to	4885	254 252 3100	to	3199	258 405 6200	to	6299
182 475 3904	to	3933	224 636 4932	to	4948	254 252 3200	to	3299	258 405 6300	to	6399
182 631 0031	to	0099	224 636 4950	to	4962	254 252 3300	to	3399	258 405 6400	to	6499
182 911 6539	to	6600	224 636 4985	to	4999	254 252 3400	to	3499	258 405 6800	to	6899
184 218 2760	to	2799	224 723 0757	to	0799	254 252 3500	to	3599	258 405 6900	to	6999
185 828 1474	to	1499	224 730 2207	to	2299	254 252 3600	to	3699	258 405 7000	to	7099
186 132 7583	to	0599	225 970 0500	to	0599	254 252 3700	to	3799	258 405 7100	to	7199
186 629 0589	to	0599	225 970 0600	to	0699	254 252 3800	to	3899	258 405 7200	to	7299
187 184 6177	to	0199	225 970 0700	to	0799	254 252 3900	to	3999	258 405 7300	to	7399
187 323 8200	to	8299	227 033 8679	to	8699	254 252 4000	to	4099	258 405 7400	to	7499
187 441 6080	to	6099	227 275 9400	to	9999	254 252 4100	to	4199	258 405 7800	to	7899
188 831 6774	to	6799	228 463 2456	to	2499	254 252 4200	to	4299	258 405 7900	to	7999
188 835 6370	to	6399	228 510 4852	to	4899	254 252 4300	to	4399	258 405 8000	to	8099
189 083 1064	to	1099	229 462 8451	to	8475	254 252 4400	to	4499	258 405 8100	to	8199
189 660 9583	to	9599	229 668 5977	to	5999	254 252 4500	to	4599	258 405 8200	to	8299
191 179 0377	to	0399	229 923 9176	to	9199	254 252 4600	to	4699	258 405 8300	to	8399
192 050 5762	to	5781	229 924 6696	to	6699	254 252 4700	to	4799	258 405 8400	to	8499
194 456 8600	to	0699	230 051 9500	to	9999	254 252 4800	to	4899	258 405 8500	to	8599
195 194 6881	to	6899	236 366 2431	to	2499	254 252 4900	to	4999	258 405 8600	to	8699
195 874 1112	to	1199	236 607 6882	to	6899	254 565 7607	to	7700	258 405 8700	to	8799
196 979 0524	to	0599	236 660 5853	to	5872	254 907 1203	to	1299	258 405 8800	to	8899
197 244 6100	to	6199	239 322 5200	to	5299	255 185 9527	to	9599	258 405 8900	to	8999
197 244 6300	to	6399	239 322 5400	to	5499	255 397 1557	to	1576	258 405 9600	to	9699
197 244 6400	to	6499	239 322 5600	to	5699	255 425 2989	to	2998	258 405 9700	to	9799
197 244 6500	to	6599	239 322 5800	to	5899	255 728 6412	to	6499	258 405 9800	to	9899
197 244 6600	to	6699	239 322 5900	to	5999	255 728 9842	to	9899	258 405 9900	to	9999
197 244 6700	to	6799	239 607 4783	to	4799	256 134 9833	to	9839	259 014 9989	to	9999
197 244 6800	to	8999	240 593 1879	to	1899	256 134 9840	to	9849	259 062 4788	to	4798
198 285 2556	to	2566	242 591 2048	to	2099	256 134 9850	to	9859	259 218 1400	to	1499
199 105 0778	to	0799	242 735 0388	to	0398	256 134 9860	to	9869	259 218 1500	to	1599
199 678 2968	to	2999	242 951 7276	to	7299	256 134 9870	to	9879	259 218 1600	to	1699
202 748 5133	to	5199	243 535 6370	to	6399	256 134 9880	to	9889	259 590 5654	to	5699
202 748 5245	to	5299	244 004 9985	to	9999	256 134 9890	to	9899	259 670 8268	to	8299
202 748 5300	to	5399	244 004 9985	to	9999	256 247 6900	to	6999	259 835 6238	to	6399
202 748 5400	to	5499	244 268 9765	to	9799	256 550 5536	to	5545	259 835 6701	to	6799
203 256 1240	to	1299	244 347 4471	to	4499	256 799 2257	to	2299	260 224 4600	to	4699
204 230 3577	to	3595	249 056 1551	to	1599	257 154 8763	to	8799	260 224 5941	to	5999
205 019 0174	to	0199	249 336 9438	to	9499	257 154 8800	to	8899	260 310 2821	to	2899
206 936 3184	to	3199	249 399 4000	to	4099	257 765 4567	to	4599	260 452 0010	to	0022
207 196 9900	to	9999	249 399 4100	to	4199	257 765 4610	to	4696	260 452 0049	to	4299
207 204 0700	to	0799	249 399 4200	to	4299	257 765 4737	to	4799	260 553 8200	to	8299
207 204 0800	to	0899	249 399 4300	to	4399	257 792 7800	to	7889	260 553 8600	to	8699
207 514 3857	to	3899	249 399 4400	to	4499	257 792 7900	to	7999	260 553 9600	to	9799
208 556 4707	to	4799	249 399 4500	to	4599	257 792 8000	to	8099	260 553 9800	to	8899
210 057 4038	to	4047	249 399 4600	to	4699	257 856 9863	to	9899	260 553 9900	to	9999
210 221 0548	to	0599	249 399 4700	to	4799	258 103 1773	to	1782	260 761 1603	to	1662
214 061 4711	to	4724	249 399 4800	to	4899	258 405 1800	to	1899	261 183 2100	to	2299
214 303 6311	to	6325	249 399 4900	to	4999	258 405 1900	to	1999	261 426 0408	to	0499
214 303 6239	to	6258	250 159 7502	to	7599	258 405 3300	to	3399	262 082 8000	to	8099
214 877 4251	to	4273	250 566 9644	to	9699	258 405 3400	to	3499	262 082 8100	to	8199
215 252 3918	to	3992	250 661 8425	to	8499	258 405 3500	to	3599	262 082 8200	to	8299
217 585 1400	to	1499	251 335 5731	to	5799	258 405 3700	to	3799	262 082 8300	to	8399
218 698 2157	to	2199	251 379 2380	to	2399	258 405 3800	to	3899	262 082 8400	to	8499
218 746 0800	to	0899	252 005 7626	to	7699	258 405 3900	to	3999	262 288 7302	to	7399
219 095 0100	to	0399	252 421 8401	to	8499	258 405 4000	to	4099	262 288 7400	to	7499
219 389 1885	to	1899	252 464 2810	to	2899	258 405 4100	to	4199	262 288 9900	to	9999

262 337 2600 to 2699	262 337 9000 to 9099	273 775 7700 to 7899	395 343 3264 to 3299
262 337 2700 to 2700	262 337 9100 to 9199	273 882 1913 to 1998	395 373 3035 to 3099
262 337 2800 to 2800	262 337 9200 to 9299	274 750 0300 to 0400	395 396 9649 to 9799
262 337 2900 to 2900	262 337 9300 to 9399	274 782 0549 to 0599	395 970 3240 to 3299
262 337 3000 to 3099	262 337 9400 to 9499	279 517 9330 to 9399	397 622 4054 to 4099
262 337 3100 to 3199	262 337 9500 to 9599	279 517 9594 to 9599	397 819 8902 to 8999
262 337 3200 to 3299	262 337 9600 to 9699	279 517 9623 to 9699	398 149 7200 to 7699
262 337 3300 to 3399	262 337 9700 to 9799	282 667 2500 to 4999	399 070 0872 to 0899
262 337 3400 to 3499	262 337 9800 to 9899	302 000 0000 to 9999	399 156 7119 to 7199
262 337 3500 to 3599	262 337 9900 to 9999	349 746 2056 to 2099	399 203 5064 to 5099
262 337 3600 to 3699	262 472 3188 to 3199	350 518 7350 to 7374	399 296 9910 to 9999
262 337 3700 to 3799	262 472 3200 to 3299	360 011 1690 to 1699	399 396 8935 to 8999
262 337 3800 to 3899	262 546 3100 to 3199	360 168 6008 to 6099	399 792 7775 to 7799
262 337 3900 to 3999	262 546 3200 to 3299	360 173 8800 to 8899	399 792 8300 to 8399
262 337 4000 to 4099	262 546 3300 to 3399	360 324 2326 to 2399	400 427 1051 to 1999
262 337 4100 to 4199	262 546 3400 to 3499	362 861 3064 to 3099	401 045 1505 to 1549
262 337 4200 to 4299	262 546 3500 to 3599	373 006 2176 to 2199	401 045 1571 to 1599
262 337 4300 to 4399	262 546 3600 to 3699	374 768 2600 to 2699	401 294 2700 to 2799
262 337 4400 to 4499	262 546 3900 to 3999	375 169 4400 to 4599	401 310 9505 to 9599
262 337 4500 to 4599	262 546 4300 to 4399	375 829 3400 to 3499	401 382 5312 to 5399
262 337 4600 to 4699	262 546 4400 to 4499	375 851 9100 to 9199	402 578 7876 to 7899
262 337 4700 to 4799	262 546 4500 to 4599	376 196 0911 to 0999	403 125 6744 to 6799
262 337 4800 to 4899	262 546 4600 to 4699	378 085 3679 to 3699	403 260 7000 to 7499
262 337 4900 to 4999	262 546 4700 to 4799	378 351 1063 to 1099	403 280 6470 to 6499
262 337 5000 to 5099	262 546 4800 to 4899	379 843 5100 to 5199	403 685 8600 to 8699
262 337 5100 to 5199	262 546 4900 to 4999	380 093 9600 to 9699	404 003 0300 to 0399
262 337 5200 to 5299	262 546 7100 to 7199	380 165 1165 to 1199	404 041 8838 to 8899
262 337 5300 to 5399	262 546 7200 to 7299	381 325 4500 to 4599	404 071 4268 to 4299
262 337 5400 to 5499	262 546 7300 to 7399	381 604 2510 to 2699	404 347 5356 to 5399
262 337 5500 to 5599	262 546 7400 to 7499	381 645 9525 to 9599	404 347 5548 to 5599
262 337 5600 to 5699	262 546 9800 to 9899	383 314 3968 to 3999	404 726 4500 to 4599
262 337 5700 to 5799	262 546 9900 to 9999	383 892 1000 to 1344	404 961 5001 to 5199
262 337 5800 to 5899	262 567 1788 to 1799	383 892 1382 to 1399	405 325 0188 to 0198
262 337 5900 to 5999	263 254 2500 to 2500	384 925 3641 to 3654	406 009 4587 to 4599
262 337 6000 to 6099	263 340 0000 to 0099	385 568 2331 to 2399	406 260 6830 to 6899
262 337 6100 to 6199	263 340 0100 to 0199	385 599 7554 to 7575	406 459 6641 to 6999
262 337 6200 to 6299	263 340 0500 to 0599	385 774 2024 to 2099	406 733 3000 to 3999
262 337 6300 to 6399	263 340 0600 to 0699	386 624 1412 to 1599	407 545 1557 to 1599
262 337 6400 to 6499	263 340 2700 to 2799	386 883 8936 to 8999	407 594 0412 to 0599
262 337 6500 to 6599	263 340 2800 to 2899	387 314 5574 to 5599	407 692 9100 to 9299
262 337 6600 to 6699	263 340 3000 to 3099	387 837 6300 to 6399	407 959 2190 to 2199
262 337 6700 to 6799	264 341 2360 to 2399	388 828 0656 to 0699	408 265 2275 to 2288
262 337 6800 to 6899	264 380 4000 to 4099	389 696 2400 to 2799	408 499 7700 to 7799
262 337 6900 to 6999	264 380 4100 to 4199	389 846 3104 to 3135	408 499 7900 to 7999
262 337 7000 to 7099	264 799 6049 to 6099	389 846 3145 to 3195	408 682 8484 to 8599
262 337 7100 to 7199	264 860 7832 to 7868	389 887 9211 to 9230	408 698 7015 to 7099
262 337 7200 to 7299	265 127 3658 to 3699	389 887 9234 to 9299	409 072 3941 to 3999
262 337 7300 to 7399	265 380 7111 to 7137	390 001 3182 to 3199	410 491 2311 to 2399
262 337 7400 to 7499	265 444 4762 to 4799	390 001 3500 to 3699	410 694 8400 to 8599
262 337 7500 to 7599	265 548 7074 to 7099	390 545 5974 to 5999	410 775 1500 to 1599
262 337 7600 to 7699	266 106 0000 to 2499	391 104 6146 to 6199	410 795 7927 to 7999
262 337 7700 to 7799	266 129 5809 to 5899	391 574 1466 to 1499	410 867 0917 to 0966
262 337 7800 to 7899	266 673 0000 to 2499	391 783 3020 to 3599	410 867 0970 to 0999
262 337 7900 to 7999	266 749 7900 to 7999	391 792 6100 to 6199	411 868 1023 to 1199
262 337 8000 to 8099	266 868 0952 to 0999	392 668 2956 to 2999	411 922 2322 to 2399
262 337 8100 to 8199	266 868 1028 to 1099	392 854 8500 to 8899	412 193 0900 to 0999
262 337 8200 to 8299	266 868 1100 to 1199	393 584 7566 to 7699	412 395 8599 to 8699
262 337 8300 to 8399	266 868 1200 to 1299	393 650 0074 to 0099	412 485 6500 to 6599
262 337 8400 to 8499	267 296 1237 to 1299	393 838 8316 to 8499	412 485 6610 to 6699
262 337 8500 to 8599	267 324 8946 to 8998	393 893 6007 to 6099	412 885 5953 to 5999
262 337 8600 to 8699	268 072 1203 to 1299	394 126 6907 to 6999	414 193 3608 to 3674
262 337 8700 to 8799	271 660 4333 to 4400	394 189 0405 to 0599	414 193 3677 to 3699
262 337 8800 to 8899	273 520 0000 to 9999	394 822 3243 to 3278	414 411 7348 to 7399
262 337 8900 to 8999	273 520 6000 to 8999	394 990 1810 to 1899	414 640 0757 to 0799

414 965 1727	to	1799	436 160 6441	to	6499	458 671 8721	to	8798	476 331 2480	to	2499
417 302 8104	to	8199	437 316 7115	to	7199	458 847 5044	to	5999	477 289 8601	to	8699
417 387 6532	to	6599	437 427 0500	to	3499	459 274 7624	to	7699	477 681 5206	to	5299
417 496 6800	to	6999	439 179 2300	to	2399	459 365 5432	to	5499	478 010 4243	to	4268
417 871 9250	to	9299	439 310 0458	to	0499	459 378 5764	to	5799	478 010 4270	to	4291
417 930 9533	to	9599	440 698 1947	to	1999	459 472 4816	to	4999	478 450 5071	to	5099
418 164 6500	to	6799	440 858 6300	to	6399	460 349 6878	to	6899	478 469 7838	to	7858
418 423 9863	to	9899	440 858 6420	to	7299	460 550 1909	to	1999	478 469 7883	to	7899
418 633 5922	to	5999	441 199 1655	to	1699	460 997 5234	to	5299	479 280 9800	to	9899
418 719 8520	to	8599	443 127 3648	to	3699	461 973 6443	to	6499	479 365 9116	to	9176
418 744 2235	to	2299	443 127 4000	to	4099	462 152 0107	to	0299	479 412 9900	to	9999
418 962 2848	to	2899	443 673 7900	to	7999	462 274 1072	to	1099	479 667 6190	to	6199
419 543 0286	to	0299	443 800 9335	to	9399	462 277 8373	to	8399	479 748 9680	to	9699
419 730 0300	to	0399	444 382 8822	to	8899	462 554 6051	to	6099	479 860 7000	to	7199
420 277 0015	to	0049	444 390 1667	to	1699	463 011 5529	to	5540	480 526 2000	to	2099
420 599 0734	to	0798	444 457 3854	to	3899	463 176 4115	to	4199	480 640 6330	to	6399
420 661 4115	to	4199	450 048 4173	to	4199	463 176 4229	to	4299	480 658 0568	to	0599
420 758 9500	to	9699	450 048 4442	to	4699	463 185 2600	to	2799	480 689 5100	to	5199
420 969 3951	to	3971	450 560 5173	to	5199	463 227 7711	to	7799	481 072 9463	to	9499
420 969 3973	to	3999	450 620 3077	to	3099	463 414 4869	to	4899	481 673 0074	to	0095
421 116 3565	to	3599	450 620 3135	to	3199	463 808 3484	to	3499	482 527 1500	to	1599
421 130 9300	to	9399	450 780 2716	to	2799	463 945 7400	to	7899	482 541 5255	to	5299
421 313 4500	to	4999	450 801 2700	to	2799	464 629 9000	to	9399	482 729 6800	to	6899
421 364 5537	to	5599	451 109 2967	to	2984	464 711 4332	to	4399	483 363 7207	to	7299
421 656 2609	to	2699	451 115 4110	to	4125	465 692 3963	to	3999	483 402 2356	to	2399
421 988 9700	to	9799	451 115 4127	to	4199	465 698 8300	to	8599	483 486 5100	to	5199
422 172 4667	to	4699	451 746 0700	to	0799	465 743 7745	to	7799	483 632 1521	to	1599
422 484 4212	to	4299	452 265 0074	to	0099	466 798 6056	to	6067	483 632 2600	to	2799
422 556 1270	to	1299	452 265 0246	to	0299	467 147 4300	to	4399	483 849 1615	to	1699
422 587 7024	to	7099	452 265 0335	to	0999	468 079 5782	to	5799	484 174 4803	to	5299
422 819 7533	to	7599	452 509 1169	to	1199	469 067 2817	to	2899	484 323 8900	to	9199
422 842 5073	to	5087	452 855 6471	to	6499	469 127 8000	to	8199	484 680 5000	to	5038
422 907 7563	to	7599	452 890 4679	to	4799	469 213 0359	to	0399	484 680 5040	to	5074
424 500 6050	to	6099	452 900 8215	to	8238	469 213 0500	to	0599	484 680 5077	to	5099
424 641 8500	to	8599	453 117 9146	to	9199	469 561 8011	to	8099	485 029 4913	to	4999
424 871 6600	to	6699	453 334 3631	to	3699	469 658 1961	to	1999	486 176 0600	to	0699
425 298 2352	to	2399	453 603 7841	to	7891	469 666 9900	to	9999	486 559 7555	to	7599
425 418 4269	to	4299	453 650 1140	to	1199	469 678 1900	to	1999	486 696 3023	to	3199
425 418 4405	to	4499	453 741 1300	to	1399	469 781 4900	to	4999	488 173 7900	to	7999
426 547 4566	to	4599	454 013 2919	to	2999	469 947 6960	to	6999	488 206 4100	to	4199
427 412 6337	to	6499	454 186 2411	to	2499	470 755 5800	to	5818	488 226 0200	to	0299
427 481 0900	to	0999	454 268 4883	to	4899	471 918 0300	to	0999	488 709 3906	to	3999
428 027 2742	to	2752	454 302 5400	to	5499	471 985 2408	to	2419	488 855 8359	to	8399
429 474 4172	to	4199	454 490 8300	to	8399	472 191 6700	to	6799	489 181 8963	to	8999
429 889 2900	to	2999	454 547 7434	to	7499	472 270 2555	to	2599	489 223 2000	to	2099
430 150 4401	to	4599	454 922 4867	to	4895	472 987 0213	to	0241	489 311 1930	to	1999
430 172 9800	to	9899	455 221 1348	to	1499	472 987 0290	to	0299	489 318 6200	to	6300
430 177 1900	to	2099	455 364 2147	to	2199	473 151 2069	to	2199	489 384 0027	to	0099
430 444 9500	to	9699	455 399 5400	to	5499	473 666 9138	to	9199	489 427 0658	to	0899
430 664 4070	to	4099	455 476 0676	to	0699	473 952 3429	to	3499	489 997 5252	to	5299
432 168 8419	to	8499	455 543 0618	to	0699	474 108 5402	to	5499	490 669 5850	to	6099
432 708 6800	to	6999	456 410 9006	to	9099	474 356 5193	to	5299	490 717 7080	to	7099
432 744 1544	to	1599	456 470 4146	to	4299	474 949 3366	to	3399	490 721 6000	to	6099
432 995 9775	to	9799	456 619 4460	to	4499	475 134 9362	to	9399	490 793 1500	to	2099
433 003 5800	to	5899	457 333 2686	to	2699	475 167 9667	to	9699	490 886 8171	to	8199
433 757 3047	to	3099	457 729 1767	to	1777	475 319 3415	to	3499	490 977 9221	to	9240
433 765 4003	to	4099	457 937 8615	to	8699	475 319 3649	to	3799	491 258 8100	to	9099
434 482 7060	to	7199	458 028 9810	to	9899	475 340 6400	to	6599	491 567 1376	to	1399
434 513 2386	to	2399	458 057 2712	to	2999	475 424 8410	to	8499	492 254 4800	to	4899
434 968 3076	to	3092	458 069 9537	to	9599	475 629 9156	to	9199	492 283 5100	to	5199
435 303 1831	to	1842	458 069 9665	to	9699	475 850 6101	to	6199	492 610 6813	to	6899
435 303 1986	to	1999	458 337 5222	to	5299	475 875 2500	to	2599	493 394 5568	to	5599
435 666 6092	to	6399	458 354 7653	to	7999	476 169 8264	to	8299	493 470 2562	to	2599
436 082 6400	to	6899	458 671 8678	to	8699	476 189 3000	to	3499	493 473 7700	to	7799

493 716 2153	to	2199	513 539 9985	to	9999	618 840 9200	to	9299	640 289 7700	to	7999
494 206 2972	to	2999	513 606 5459	to	5490	619 551 7229	to	7299	641 170 4420	to	4499
494 217 3446	to	3999	513 812 1751	to	1799	619 859 3000	to	3099	641 318 3133	to	3199
494 224 0500	to	0599	514 103 3600	to	3699	620 073 9400 to 9499			641 378 6500	to	6999
495 145 0600	to	0699	514 103 3700	to	3799	621 614 7907	to	7930	641 383 8739	to	8799
496 209 7425	to	7499	514 103 3800	to	3899	621 614 7932	to	7999	641 877 3187	to	3299
496 213 8728	to	8799	600 645 3223 to 3299			621 648 8021	to	8199	641 877 3310	to	3399
496 474 5226	to	5248	601 339 1200	to	1399	621 648 8500	to	8599	642 355 8094	to	8199
497 053 8517	to	8699	601 653 5884	to	5899	621 904 8351	to	8599	642 355 8308	to	8999
497 854 8673	to	8699	601 661 7700	to	7799	621 916 1978	to	1989	642 900 0018	to	0099
498 449 8888	to	8899	601 682 5343	to	5399	622 989 8032	to	8099	643 030 6254	to	6299
498 929 8285	to	8499	601 928 1600	to	1699	623 076 9300	to	9399	644 066 0882	to	0899
498 936 5310	to	5399	602 512 2972	to	2999	623 819 5006	to	5099	644 069 0600	to	0699
499 016 5425	to	5499	602 555 2400	to	2799	623 895 8200	to	8399	644 077 7506	to	7699
499 440 8575	to	8899	602 829 7061	to	7099	623 917 0000	to	0099	644 085 8157	to	8199
499 731 6717	to	6799	603 483 9572	to	9599	623 917 0200	to	0299	644 112 9839	to	8899
500 064 1858 to 1869			603 490 7200	to	7299	624 468 5288	to	5299	644 373 9083	to	9099
500 070 5725	to	7799	603 678 7100	to	7199	624 665 3162	to	3198	644 380 1460	to	1499
501 058 0016	to	0026	603 678 7662	to	7699	625 088 6735	to	6799	644 733 4715	to	4799
501 331 0300	to	0399	603 678 7902	to	7999	625 916 9500	to	9799	644 900 9712	to	9799
501 460 0977	to	0999	603 678 8418	to	8499	625 968 8956	to	8999	644 901 0109	to	1299
502 227 7645	to	7699	603 678 8700	to	9999	627 005 3938	to	3999	644 901 1325	to	1399
502 424 0200	to	0499	604 086 0880	to	0899	627 384 3907	to	4099	644 923 6800	to	7799
502 424 0600	to	0699	604 349 1414	to	1499	627 496 7549	to	7599	644 932 4655	to	4699
502 496 6923	to	6999	604 503 7776	to	7799	627 708 3605	to	3699	645 318 7240	to	7499
503 003 2700	to	2899	605 520 9037	to	9099	627 776 2500	to	2599	645 333 1766	to	1799
503 194 5144	to	5153	605 685 4010	to	4099	628 226 3100	to	3199	645 790 8632	to	8699
503 790 9922	to	9948	605 988 6467	to	6499	628 814 4702	to	4799	645 821 0657	to	0699
504 045 4030	to	4099	607 689 7951	to	7960	628 851 9689	to	9699	645 930 7948	to	7999
504 166 0200	to	0599	607 728 1276	to	1299	629 510 7200	to	7299	645 975 0737	to	0762
504 240 1062	to	1399	608 727 7100	to	7199	629 964 4200	to	4294	646 242 6200	to	6299
504 805 3300	to	3499	608 727 7273	to	7599	630 389 3056 to 3071			646 270 7639	to	7799
505 096 0662	to	0699	608 813 9950	to	9999	630 463 0588	to	0599	646 798 4000	to	4999
505 893 7739	to	7799	609 067 5325	to	5399	631 459 9117	to	9199	647 048 7035	to	7099
505 893 7800	to	7999	609 067 5488	to	5499	631 762 9325	to	9399	647 049 2900	to	2999
506 124 0800	to	0999	609 067 5600	to	5699	632 217 4933	to	4999	647 398 8300	to	8399
506 165 7027	to	0099	609 289 6123	to	6199	632 500 0000	to	640 3999	647 398 8481	to	8499
506 502 5209	to	5299	609 438 4400	to	4499	633 110 4165	to	4199	647 437 3000	to	4999
506 756 1682	to	1699	609 493 1100	to	1199	633 110 4303	to	4499	647 811 2188	to	2199
506 756 1700	to	1799	609 766 8091	to	8999	633 438 6429	to	6599	648 009 6057	to	6099
506 756 1800	to	1899	609 825 4100	to	4115	633 588 7173	to	7182	648 163 5300	to	5499
506 836 5326	to	5399	609 884 2981	to	2999	634 725 0700	to	0799	648 722 5283	to	5299
508 488 6226	to	6299	609 893 1000	to	1099	634 803 3239	to	3299	648 892 3164	to	3199
508 789 8332	to	8399	610 092 3200 to 3299			634 807 2474	to	2499	649 100 3989	to	3999
508 789 8400	to	8499	610 582 4200	to	4299	634 827 5900	to	5999	649 647 0370	to	0399
509 909 0425	to	0435	611 879 6939	to	6999	634 886 3428	to	3499	649 647 0522	to	0599
510 150 2400 to 2499			612 291 8013	to	8099	635 559 3449	to	3499	649 647 5237	to	5399
510 381 3200	to	3299	612 751 5171	to	5199	636 289 6214	to	6299	649 647 9100	to	9299
510 587 9500	to	9599	612 751 5226	to	5299	636 634 8007	to	8042	649 666 7800	to	8299
510 587 9659	to	9699	612 751 6083	to	6099	637 150 1200	to	1299	650 114 7707 to 7719		
510 269 9770	to	9999	612 751 6268	to	6299	637 562 5828	to	5899	650 130 3400	to	3599
511 021 5042	to	5099	612 751 6572	to	6599	638 042 1647	to	1699	650 213 0406	to	0499
511 021 5100	to	5199	612 774 2111	to	2199	638 049 4984	to	4999	650 555 1749	to	1799
511 468 1747	to	1799	612 774 2254	to	2299	638 318 1115	to	1199	650 564 1900	to	1999
511 844 0100	to	0199	612 774 2500	to	2599	638 318 1453	to	1499	650 627 4212	to	4299
511 844 0340	to	0399	614 469 0979	to	0999	638 885 0000	to	0299	650 736 2043	to	2099
512 805 3913	to	3919	614 474 3000	to	3099	638 903 4362	to	4373	650 739 1540	to	1699
513 046 0700	to	0726	614 521 3490	to	3499	639 415 1929	to	1999	651 741 4415	to	4499
513 149 0600	to	0699	614 645 1800	to	1899	639 415 2019	to	2099	651 882 2800	to	2899
513 445 3000	to	3199	614 832 1100	to	2099	639 420 6200	to	6299	652 754 6317	to	6399
513 466 2034	to	2044	615 017 7505	to	7599	639 469 3517	to	3799	653 131 4945	to	4999
513 539 9052	to	9099	617 711 6609	to	6699	639 605 2143	to	2199	653 426 3300	to	3399
513 539 9267	to	9299	617 760 5266	to	5299	639 657 8600	to	8799	653 455 4874	to	4899
513 539 9800	to	9899	617 813 3601	to	3699	640 289 7500 to 7599			654 238 0000	to	0399

654 404 3065	to	3092	682 956 6490	to	6599	701 499 2260	to	2299	740 918 5531	to	5549
654 962 2900	to	3199	682 956 6700	to	6799	701 503 2247	to	2299	741 037 8528	to	8551
655 103 5081	to	5199	682 965 1178	to	1199	701 541 2271	to	2299	742 030 6135	to	6149
655 523 2600	to	2999	682 965 1201	to	1299	701 553 6557	to	6599	742 033 2663	to	2674
656 305 2448	to	2499	683 118 2389	to	2399	701 578 7460	to	7469	742 040 3300	to	3309
657 347 4438	to	4999	683 378 2000	to	2099	701 578 7475	to	7499	742 112 8155	to	8199
657 710 8100	to	8999	683 378 2117	to	2299	701 601 3457	to	3499	742 151 5000	to	5014
657 780 0985	to	0999	683 415 1200	to	1499	701 605 5913	to	5999	742 191 4640	to	4649
658 586 1400	to	1499	683 444 8159	to	8199	701 695 3982	to	3999	742 192 5210	to	5224
658 877 8000	to	8199	685 154 7780	to	7789	701 695 4148	to	4199	742 222 9200	to	9210
658 880 8000	to	8199	685 297 7645	to	7699	701 695 4227	to	4299	742 228 9660	to	9669
659 398 7300	to	7399	685 623 5264	to	5299	701 708 1741	to	1799	742 247 6980	to	6989
659 706 8113	to	8199	685 650 9487	to	9499	701 736 3966	to	3999	742 290 0936	to	0950
659 846 7837	to	7899	685 669 4200	to	4299	701 772 0870	to	0899	742 302 7600	to	7699
660 510 4100	to	4199	685 757 8452	to	8499	701 838 2800	to	2899	742 305 3711	to	3799
660 673 0400	to	0599	686 071 2694	to	2799	701 941 0600	to	0699	742 305 3800	to	3899
661 488 5000	to	5099	686 176 3333	to	3354	702 171 1603	to	1699	742 305 3900	to	3999
661 609 9100	to	9199	686 372 3200	to	3299	702 195 5109	to	5199	742 305 4000	to	4099
661 716 9420	to	9499	686 644 5879	to	5899	702 254 9300	to	9399	742 305 4100	to	4199
661 906 6522	to	6599	686 899 1371	to	1399	702 264 7569	to	7599	805 885 8411	to	8499
662 021 8332	to	8399	686 931 7636	to	7699	702 519 0513	to	0524	806 087 1100	to	1499
662 068 0700	to	0899	687 601 0973	to	0999	702 713 1800	to	1809	806 268 9275	to	9299
662 553 0774	to	0799	687 614 6774	to	6799	702 821 5730	to	5799	806 534 3400	to	3477
663 078 7034	to	7099	688 120 9000	to	9999	702 821 5805	to	5899	807 342 3283	to	3399
663 763 5300	to	5399	688 314 3107	to	3191	702 844 6975	to	6994	808 086 7100	to	7199
663 883 7039	to	7499	690 291 1361	to	1371	702 846 6331	to	6399	808 090 3440	to	3499
663 938 9200	to	9299	690 788 2877	to	2899	702 848 3900	to	3999	808 325 5161	to	5699
664 253 8000	to	8499	690 893 5344	to	5399	702 857 7302	to	7499	808 784 8000	to	8299
664 656 3055	to	3099	690 893 5512	to	5599	702 878 0114	to	0199	830 125 0672	to	0699
665 174 6400	to	6499	690 904 1300	to	1599	703 364 1707	to	1799	830 602 5800	to	5999
665 274 8208	to	8299	690 941 6000	to	6199	740 002 7710	to	7719	830 610 3700	to	3799
665 669 5400	to	5499	691 313 6383	to	6399	740 037 6730	to	6800	830 983 3500	to	3599
666 132 8226	to	8299	691 313 6600	to	6699	740 119 2275	to	2284	830 983 3635	to	3699
666 696 2209	to	2299	691 582 8003	to	8099	740 130 6688	to	6698	831 354 1387	to	1399
666 696 2309	to	2399	691 664 1800	to	1999	740 144 2780	to	2795	831 815 8240	to	8299
667 032 9300	to	9399	691 664 2400	to	2499	740 241 9049	to	9099	832 525 3810	to	3899
667 729 5529	to	5599	692 727 9362	to	9399	740 252 9265	to	9294	833 159 1884	to	1899
668 383 8400	to	8699	692 798 1800	to	1899	740 255 1718	to	1799	833 456 2567	to	2599
670 368 3400	to	3499	693 249 0779	to	0799	740 274 2602	to	2619	833 566 3015	to	3071
670 369 7336	to	7399	693 249 0877	to	1699	740 277 0366	to	0392	834 130 5200	to	5299
670 750 7169	to	7199	693 445 0566	to	0999	740 332 7658	to	7671	834 316 5444	to	5499
671 046 6200	to	6399	693 448 8500	to	8999	740 348 6641	to	6658	834 354 8747	to	8766
671 251 5448	to	5499	693 645 9583	to	9599	740 351 4790	to	4799	834 354 8824	to	8838
671 926 5600	to	5799	693 965 4200	to	4299	740 374 7416	to	7499	835 269 5700	to	5799
672 444 2000	to	2999	695 741 2906	to	2999	740 470 2420	to	2443	835 496 7303	to	7399
672 828 3410	to	3499	695 947 8518	to	8599	740 514 0300	to	0499	835 539 5200	to	5999
673 167 5776	to	5799	696 662 8247	to	8299	740 523 7432	to	7449	835 813 3015	to	3099
675 464 3700	to	3799	697 447 8285	to	8296	740 535 1555	to	1580	837 672 8967	to	8999
675 464 4000	to	4199	698 042 4816	to	4899	740 557 3570	to	3579	837 784 3282	to	3299
676 365 5958	to	5999	698 131 2138	to	2157	740 650 4104	to	4140	838 176 8377	to	8399
676 669 1024	to	1099	698 227 0000	to	0099	740 684 0620	to	0800	838 518 1257	to	1299
677 126 6734	to	6799	700 065 2570	to	2599	740 701 6105	to	6114	839 718 8257	to	8299
677 333 9979	to	9999	700 065 4800	to	4899	740 705 9790	to	9799	840 323 0600	to	0699
677 466 1088	to	1099	700 190 3350	to	3359	740 726 6400	to	6500	840 875 6235	to	6299
678 071 4500	to	4799	700 228 6048	to	6099	740 748 8319	to	8329	840 910 0900	to	0999
678 096 7531	to	7599	700 650 0452	to	0499	740 765 3306	to	3399	841 349 5000	to	5099
679 909 2578	to	2599	700 666 1323	to	1349	740 774 8434	to	8499	841 805 7747	to	7899
680 112 9565	to	9599	700 786 9106	to	9142	740 779 4259	to	4299	841 805 7944	to	8099
680 244 0903	to	0999	700 859 0744	to	0758	740 786 1885	to	1899	842 226 0685	to	0695
680 412 6046	to	6099	701 028 6780	to	6899	740 790 5989	to	5999	842 685 4600	to	4699
680 761 6800	to	6899	701 213 3900	to	3999	740 803 4870	to	4879	842 685 4742	to	4999
681 677 0540	to	0699	701 267 2000	to	3999	740 820 4854	to	7836	842 860 0300	to	0399
682 070 1029	to	1099	701 335 7312	to	7399	740 827 7578	to	7594	842 898 5582	to	5599
682 956 6280	to	6299	701 369 2005	to	2050	740 917 7490	to	7499	843 062 7100	to	7199

843 077 6288	to	6299	864 520 6117	to	6136	907 815 0216	to	0257	919 915 2774	to	2787
843 077 6378	to	6399	865 151 0526	to	0599	908 622 4225	to	4235	920 155 4662	to	4687
843 758 5769	to	5778	865 500 4034	to	4099	908 936 9254	to	9299	920 309 9039	to	9199
843 786 2554	to	2699	865 883 6082	to	6099	909 066 4494	to	7499	920 771 5321	to	5399
845 656 8165	to	8199	866 004 3000	to	3999	909 067 7400	to	7499	920 857 5500	to	5899
845 727 2100	to	2199	866 442 4100	to	4899	909 100 1787	to	1799	920 864 3480	to	3499
845 746 2618	to	2635	867 366 9108	to	9118	909 100 1900	to	2099	920 963 4567	to	4599
846 390 7531	to	7599	867 633 7403	to	7499	909 355 0422	to	0499	921 333 7400	to	7499
846 918 0572	to	0599	867 737 5623	to	5699	909 568 8900	to	9099	921 477 3762	to	3799
847 237 7690	to	7699	868 169 4529	to	4599	909 568 9300	to	9499	922 278 1048	to	1399
847 284 2481	to	2499	868 173 8400	to	8599	909 725 7307	to	7399	922 280 2019	to	2099
847 374 7055	to	7065	868 514 9000	to	9099	909 833 0947	to	0999	922 280 2233	to	2299
847 374 7055	to	7065	868 566 9200	to	9299	910 219 8631	to	8699	922 773 0459	to	0499
847 636 5304	to	5399	869 200 0000	to	9999	910 265 1100	to	1199	923 032 7000	to	7399
847 700 5447	to	5499	869 387 1150	to	1199	910 471 7273	to	7299	923 045 3630	to	3699
847 723 7500	to	7599	869 505 3500	to	3599	910 536 2505	to	2599	923 484 3600	to	3699
849 485 3427	to	3499	869 523 7033	to	7099	910 958 7499	to	7599	923 493 9403	to	9599
849 520 9850	to	9899	869 566 6150	to	6167	911 140 1000	to	2199	923 493 9681	to	9699
849 608 1357	to	1399	869 776 8785	to	8786	911 245 2545	to	2599	923 604 4424	to	4499
849 792 2600	to	2699	869 800 0000	to	999 9999	911 268 9077	to	9099	923 810 7800	to	8299
850 546 1862	to	1899	870 054 4814	to	4899	911 400 8948	to	8999	924 252 1200	to	1299
851 143 6826	to	6844	870 491 4812	to	4849	911 508 1620	to	1799	924 252 1400	to	1499
851 209 9880	to	9899	870 536 5820	to	5829	911 509 9310	to	9399	924 533 0711	to	0799
851 928 9221	to	9299	870 541 7167	to	7239	911 523 3000	to	3999	924 533 2343	to	2399
852 589 6560	to	6599	870 575 8155	to	8999	912 057 9922	to	9999	924 533 2428	to	2499
853 049 3646	to	3699	870 589 0485	to	0494	912 882 0563	to	0899	924 685 1957	to	1999
854 304 4089	to	4999	870 691 7060	to	7099	913 605 2218	to	2299	924 946 6300	to	6699
854 529 2200	to	2299	872 028 4850	to	4899	913 709 2429	to	2499	925 333 5900	to	6099
854 532 0000	to	2999	872 029 9306	to	9399	913 818 3501	to	3999	925 336 2300	to	2399
855 001 6204	to	6249	872 078 3709	to	3799	914 063 4300	to	4399	926 432 5907	to	5999
855 319 9364	to	9399	872 100 0445	to	0459	914 346 7621	to	7644	926 436 3600	to	3699
855 361 3390	to	3399	900 556 4178	to	4199	914 453 1366	to	1399	927 765 6257	to	6299
856 226 0490	to	0499	900 845 0044	to	0099	914 529 6185	to	6299	928 197 8100	to	8199
856 656 5800	to	5999	900 936 0217	to	0299	914 896 4658	to	4699	928 197 8283	to	8299
856 752 0200	to	0299	900 936 0435	to	0499	915 187 8774	to	8779	928 856 2059	to	2068
857 111 1352	to	1399	901 058 5255	to	5280	915 300 2783	to	2799	930 078 5800	to	5899
857 279 3450	to	3499	901 273 1082	to	1099	915 546 6822	to	6999	930 219 1722	to	1799
857 843 4000	to	4099	901 287 5143	to	5199	915 646 5183	to	5199	930 335 7810	to	7819
858 124 7644	to	7699	901 291 2789	to	2799	915 671 3963	to	3980	931 097 9259	to	9299
858 756 3111	to	3299	901 525 7122	to	7199	915 671 3982	to	3999	931 156 1502	to	1579
859 063 8200	to	8699	902 089 1253	to	1299	915 675 2217	to	2299	931 156 1600	to	1625
859 190 0600	to	0644	902 198 9769	to	9799	916 440 3377	to	3399	931 156 1671	to	1699
859 437 5538	to	5599	902 948 1269	to	1299	916 670 6352	to	6399	932 506 6400	to	6599
859 811 2888	to	2899	902 985 0833	to	0899	916 682 5300	to	5399	932 732 1796	to	1799
859 855 8873	to	8999	903 370 6934	to	6999	916 694 1414	to	1499	932 827 9026	to	9099
860 240 8520	to	8599	904 600 6523	to	6599	916 703 0802	to	0821	932 957 2300	to	2399
860 275 3900	to	3999	904 892 0378	to	0399	917 089 0709	to	0799	933 060 6160	to	6189
860 518 9629	to	9699	904 892 0648	to	1299	917 089 0842	to	0899	933 387 2541	to	2561
860 600 0021	to	0999	905 056 2216	to	2299	917 216 2928	to	2999	933 760 3609	to	4199
861 158 2350	to	2599	905 510 6647	to	6799	917 370 6300	to	6499	933 894 0928	to	0999
861 367 5400	to	5499	905 510 6900	to	7099	917 486 4900	to	4999	934 018 2729	to	2741
861 637 6010	to	6099	905 794 0000	to	0199	918 460 0602	to	0699	934 180 0300	to	0399
861 979 7292	to	7499	905 794 0288	to	0299	918 951 7231	to	7299	934 236 3954	to	3999
862 216 6100	to	6199	905 873 6900	to	6999	919 519 2786	to	2799	934 622 8717	to	8999
862 263 9213	to	9299	905 873 7100	to	7299	919 536 0770	to	0799	935 216 0312	to	0399
862 271 0800	to	0999	905 880 8900	to	8999	919 814 3095	to	3199	935 843 2202	to	2247
862 271 5000	to	5099	905 889 7100	to	7199	919 889 5110	to	5134	936 024 8889	to	8899
863 871 5138	to	5199	906 158 1508	to	1599	919 889 5137	to	5176	936 339 4455	to	4499
863 949 5300	to	5399	906 558 8812	to	8899	919 889 5178	to	5199			
864 088 8200	to	8299	906 982 2214	to	2299	919 889 5030	to	5070			
864 426 3972	to	3999	907 725 8500	to	8599	919 889 5090	to	5099			

USPS Commemorates Black Heritage with the
Phillis Wheatley

Forever® Stamp



ON SALE JANUARY 29, 2026

Missing, Lost, or Stolen Canadian Money Order Forms

Do Not Cash — Upon Receipt, Notify Local Postal Inspectors

Provide this listing to all Postal Service™ employees responsible for accepting and cashing postal money orders. Destroy all interim notices when the numbers listed appear in the *Postal Bulletin*. The new money order serial numbers consist of the first 9 digits. The tenth digit is a check digit only.

Do not cash outdated money orders **104 151 601 to 692 600 000**. Advise holders to send invalid money orders to Canada Post Corporation, Ottawa, Canada K1A 0B1. Check for altered dollar amounts by holding money orders to the light.

719 869 731	to	9 760	727 749 241	to	9 780	734 389 273	to	9 290	741 492 991	to	3 140
720 227 871	to	7 930	728 382 331	to	2 480	734 440 031	to	0 111	741 553 460	to	3 470
720 227 949	to	7 960	728 702 338	to	2 400	734 797 201	to	7 320	741 764 431	to	4 520
720 368 543	to	8 570	728 915 371	to	5 850	734 939 611	to	9 640	741 764 431	to	4 520
720 392 151	to	2 570	728 953 141	to	3 410	734 950 111	to	0 170	742 178 834	to	8 880
720 556 491	to	6 640	728 954 280	to	4 310	735 120 331	to	0 840	742 325 500	to	5 520
720 558 621	to	8 650	729 169 081	to	9 140	735 283 008	to	3 020	742 325 668	to	5 700
720 575 361	to	5 570	729 363 841	to	3 870	735 293 131	to	3 220	742 408 771	to	8 830
720 590 152	to	0 179	729 682 891	to	3 190	735 635 010	to	5 040	742 512 120	to	2 150
721 638 331	to	9 170	729 838 940	to	9 070	735 783 961	to	3 990	742 684 849	to	4 890
721 815 391	to	5 420	729 839 101	to	9 130	735 803 401	to	3 430	742 839 553	to	9 630
721 969 713	to	9 740	730 077 683	to	7 840	736 005 420	to	5 440	742 913 668	to	3 700
722 072 137	to	2 160	730 109 847	to	9 880	736 366 021	to	6 110	742 917 287	to	7 296
722 378 265	to	8 280	730 373 761	to	3 850	736 624 456	to	4 500	742 921 891	to	1 980
722 413 990	to	4 004	730 501 951	to	2 130	736 670 851	to	1 060	742 983 631	to	3 810
722 764 948	to	4 980	730 519 379	to	9 470	736 767 061	to	7 090	743 020 021	to	0 170
722 825 840	to	5 889	730 569 278	to	9 360	736 767 093	to	7 120	743 206 491	to	6 500
723 153 841	to	3 850	730 711 711	to	1 740	736 982 191	to	2 370	743 235 992	to	6 050
723 237 616	to	7 630	730 722 991	to	3 230	736 982 551	to	2 730	743 940 631	to	0 900
723 331 081	to	1 110	730 845 970	to	5 990	737 110 141	to	0 170	743 978 011	to	8 070
723 496 443	to	6 470	730 888 291	to	8 320	737 185 501	to	5 710	744 234 751	to	4 780
723 967 291	to	7 320	730 927 591	to	7 680	737 317 321	to	7 350	744 499 591	to	9 680
724 655 196	to	5 340	731 307 914	to	7 930	737 517 781	to	7 840	744 626 901	to	6 910
724 711 441	to	1 500	731 402 431	to	2 460	737 628 181	to	8 210	745 388 794	to	8 910
724 711 538	to	1 560	731 407 232	to	7 320	737 634 258	to	4 270	746 446 806	to	6 820
724 793 221	to	3 250	731 588 301	to	8 340	738 361 971	to	1 980	746 818 351	to	8 410
724 908 109	to	8 120	731 767 273	to	7 320	738 447 601	to	7 660	747 245 266	to	5 280
724 937 461	to	7 670	731 781 061	to	1 120	738 648 355	to	8 450	747 364 813	to	4 830
725 163 118	to	3 151	731 837 821	to	7 910	738 849 811	to	9 900	747 501 434	to	1 450
725 202 735	to	2 750	731 841 377	to	1 450	738 892 270	to	2 290	747 739 891	to	0 070
725 398 591	to	8 800	732 018 481	to	8 600	738 997 259	to	7 380	748 148 649	to	8 760
725 464 591	to	4 920	732 067 972	to	8 370	739 161 451	to	1 540	748 259 960	to	9 970
725 475 321	to	5 330	732 188 649	to	8 670	739 219 381	to	9 440	748 565 162	to	5 280
725 711 057	to	1 070	732 193 460	to	3 470	739 740 151	to	0 180	748 874 988	to	5 030
725 738 581	to	8 730	732 201 241	to	1 390	739 793 491	to	3 520	749 137 381	to	7 410
725 981 311	to	1 430	732 220 431	to	0 440	739 793 527	to	3 550	749 190 192	to	0 210
725 987 835	to	7 880	732 355 201	to	5 380	739 942 621	to	2 650	749 685 421	to	5 450
726 060 811	to	0 900	732 472 320	to	2 560	739 999 231	to	9 320	749 846 791	to	6 850
726 391 970	to	2 520	732 541 605	to	1 620	740 011 517	to	1 530	749 993 131	to	3 580
726 484 771	to	4 800	732 572 221	to	2 490	740 030 701	to	0 970	750 071 587	to	1 610
726 493 351	to	5 300	732 586 479	to	6 710	740 261 740	to	1 820	750 408 167	to	8 183
726 504 031	to	4 063	732 994 037	to	4 080	740 265 811	to	6 290	750 438 421	to	8 501
726 504 070	to	4 090	733 163 449	to	3 460	740 299 111	to	9 170	750 743 911	to	4 030
726 504 331	to	4 390	733 297 171	to	7 290	740 299 231	to	9 260	750 779 118	to	9 400
726 563 701	to	4 060	733 446 631	to	7 110	740 329 266	to	9 320	750 910 981	to	1 010
726 599 371	to	9 460	733 474 665	to	4 770	740 889 081	to	9 090	750 960 841	to	0 900
726 626 356	to	6 370	733 704 482	to	4 570	741 010 421	to	0 530	751 296 211	to	6 240
727 182 271	to	2 510	733 751 041	to	1 130	741 113 041	to	3 370	751 539 121	to	9 180
727 416 181	to	6 240	734 009 101	to	9 130	741 373 891	to	4 340	751 541 311	to	1 790
727 481 431	to	1 460	734 290 759	to	0 770	741 452 369	to	2 490	751 757 641	to	7 700

751 936 951	to	7 010	761 881 171	to	1 560	772 718 615	to	8 640	798 807 151	to	7 510
751 951 861	to	1 890	761 975 641	to	5 670	772 940 140	to	0 160	798 944 761	to	5 030
751 999 021	to	9 110	761 975 886	to	5 895	772 970 886	to	0 940	799 118 616	to	8 640
752 139 516	to	9 570	762 304 144	to	4 170	773 009 419	to	9 430	799 133 191	to	3 220
752 182 892	to	2 950	762 324 931	to	4 960	773 112 031	to	2 060	799 177 626	to	7 650
752 206 861	to	7 100	762 439 261	to	9 290	773 125 387	to	5 410	799 854 751	to	5 200
752 295 241	to	5 600	762 524 158	to	4 220	773 179 320	to	9 410	800 044 320	to	4 410
752 731 351	to	1 410	762 584 872	to	4 970	773 202 989	to	3 140	800 211 901	to	2 440
752 767 441	to	7 470	762 593 431	to	3 460	773 208 991	to	9 290	800 427 530	to	7 540
753 008 941	to	9 030	763 155 160	to	5 180	773 231 311	to	1 340	800 872 741	to	2 830
753 194 311	to	4 370	763 178 631	to	8 660	773 348 739	to	8 940	801 349 801	to	9 830
753 620 378	to	0 400	763 506 001	to	6 060	773 348 739	to	8 940	801 676 681	to	7 100
754 013 917	to	3 940	763 522 141	to	2 470	773 575 891	to	5 950	802 967 821	to	7 940
754 161 061	to	1 120	763 717 694	to	7 800	773 852 971	to	3 030	803 217 601	to	7 780
754 358 445	to	8 610	763 826 461	to	6 520	775 373 449	to	3 460	803 729 731	to	9 850
754 410 451	to	0 660	763 900 460	to	0 471	789 257 191	to	7 250	803 747 402	to	7 520
754 438 393	to	8 410	763 900 479	to	0 530	790 448 020	to	8 460	804 138 181	to	8 420
754 493 109	to	3 130	763 917 271	to	7 750	790 597 485	to	7 530	804 428 224	to	8 250
754 664 182	to	4 220	764 125 801	to	5 860	790 911 883	to	1 900	804 682 411	to	2 710
754 816 377	to	6 470	764 284 525	to	4 560	791 057 441	to	7 550	805 272 525	to	2 540
755 487 421	to	7 600	764 526 241	to	6 330	791 239 081	to	9 290	805 523 445	to	3 460
755 592 901	to	3 140	764 601 421	to	1 600	791 374 483	to	4 500	805 745 704	to	5 730
755 790 020	to	0 030	764 650 231	to	0 470	791 387 971	to	8 030	806 452 907	to	2 980
755 791 730	to	1 800	764 984 371	to	4 850	791 447 521	to	7 850	806 744 781	to	4 850
755 926 951	to	7 070	765 003 667	to	3 680	791 451 151	to	1 240	806 982 181	to	2 300
755 934 332	to	4 510	765 042 517	to	2 540	791 500 009	to	0 470	807 764 791	to	4 910
755 957 701	to	8 000	765 194 728	to	4 970	791 771 431	to	1 490	808 089 931	to	9 960
755 962 981	to	3 280	765 387 365	to	7 450	792 004 293	to	4 320	808 656 423	to	6 450
756 035 371	to	5 490	765 541 801	to	2 100	792 018 379	to	8 420	808 753 771	to	3 800
756 301 257	to	1 290	765 638 461	to	8 970	792 070 621	to	0 740	809 189 001	to	9 010
756 371 565	to	1 580	765 647 101	to	7 190	792 145 211	to	5 230	809 886 879	to	6 930
756 876 031	to	6 120	765 813 781	to	4 029	792 391 381	to	1 620	809 890 489	to	0 500
756 876 151	to	6 240	765 879 314	to	9 390	792 452 779	to	2 790	810 323 734	to	3 760
756 970 129	to	0 140	765 954 001	to	4 030	792 772 728	to	2 770	810 367 116	to	7 140
757 059 613	to	9 630	766 120 286	to	0 320	792 903 511	to	3 990	810 526 351	to	6 500
757 078 540	to	8 560	766 125 716	to	5 750	793 282 518	to	2 533	810 806 911	to	6 940
757 086 209	to	6 240	766 158 824	to	8 840	794 041 831	to	2 040	810 807 211	to	7 240
757 240 591	to	0 650	766 388 433	to	8 460	794 397 709	to	7 780	811 423 021	to	3 110
757 277 371	to	7 700	766 509 421	to	9 660	794 581 741	to	2 040	811 517 221	to	7 239
757 291 591	to	2 730	766 572 901	to	3 020	794 592 122	to	2 150	811 721 101	to	1 130
757 964 251	to	4 280	766 748 500	to	8 521	795 032 251	to	2 340	812 025 721	to	5 900
758 067 001	to	7 090	767 024 341	to	4 370	795 796 291	to	6 350	812 093 073	to	3 130
758 105 221	to	5 250	767 326 471	to	6 590	796 070 139	to	0 160	812 100 821	to	0 840
758 324 941	to	5 000	767 332 561	to	2 950	796 143 151	to	3 630	812 465 251	to	5 610
758 593 628	to	3 650	768 009 841	to	9 960	796 159 725	to	9 740	812 918 341	to	8 670
758 709 038	to	9 060	768 011 489	to	1 520	796 169 306	to	9 340	812 918 701	to	8 760
758 744 101	to	4 160	768 177 980	to	7 990	796 373 406	to	3 430	813 050 491	to	0 520
758 850 883	to	0 900	768 391 081	to	1 170	796 602 961	to	3 050	813 073 171	to	3 200
758 860 951	to	1 550	768 661 569	to	1 650	796 708 441	to	8 500	813 398 476	to	8 550
759 152 851	to	2 880	769 000 051	to	0 080	796 886 281	to	6 430	813 713 971	to	4 000
759 740 941	to	1 090	769 050 841	to	0 900	796 901 701	to	2 000	813 858 121	to	8 150
760 004 596	to	4 610	769 159 081	to	9 178	796 975 466	to	5 590	814 789 330	to	9 349
760 118 191	to	8 250	769 737 496	to	7 510	797 272 917	to	2 950	814 984 656	to	4 680
760 155 001	to	5 090	769 778 491	to	8 730	797 519 441	to	9 460	815 016 020	to	6 030
760 378 002	to	8 020	769 827 331	to	7 450	797 519 731	to	0 240	815 199 410	to	9 420
760 692 722	to	2 749	770 216 071	to	6 100	797 535 181	to	5 330	815 240 491	to	0 520
761 055 460	to	5 480	770 723 281	to	3 400	797 646 151	to	6 180	815 755 591	to	5 620
761 169 781	to	9 810	770 790 451	to	0 480	798 040 053	to	0 080	815 755 622	to	5 650
761 504 941	to	5 120	770 915 150	to	5 490	798 055 813	to	5 830	815 806 381	to	6 680
761 516 836	to	6 910	771 455 551	to	5 610	798 055 891	to	5 950	816 126 834	to	6 870
761 613 588	to	3 600	771 609 661	to	9 690	798 326 371	to	6 520	816 156 721	to	6 780
761 688 631	to	8 690	771 932 551	to	2 580	798 339 167	to	9 210	816 580 903	to	0 920
761 805 199	to	5 240	772 057 224	to	7 440	798 562 411	to	2 440	816 945 571	to	5 600
761 826 106	to	6 120	772 162 660	to	3 070	798 632 461	to	2 490	817 253 011	to	3 280

817 763 881	to 4 060	821 172 241	to 2 360	825 140 397	to 0 460	828 441 602	to 1 630
818 330 562	to 0 610	821 229 661	to 9 720	825 409 651	to 9 680	828 539 316	to 9 340
818 459 641	to 9 670	821 229 743	to 9 780	825 472 171	to 2 200	828 539 341	to 9 370
818 926 273	to 6 320	821 903 731	to 3 910	826 042 898	to 2 920	828 732 331	to 2 390
818 950 351	to 0 380	821 927 841	to 7 850	826 226 644	to 6 670	828 807 781	to 7 840
818 962 492	to 2 530	822 505 801	to 5 830	826 582 951	to 3 430	828 830 952	to 0 963
819 032 341	to 2 730	822 703 442	to 3 470	826 720 201	to 0 230	828 939 781	to 0 050
819 127 054	to 7 080	822 900 991	to 1 020	827 005 671	to 5 830	829 002 721	to 2 870
819 278 540	to 8 670	822 925 951	to 6 100	827 287 861	to 7 950	829 005 301	to 5 540
819 544 681	to 4 740	823 284 931	to 4 990	827 291 502	to 1 520	829 080 241	to 0 330
819 928 441	to 8 650	823 293 031	to 3 210	827 575 381	to 5 470	829 160 986	to 1 000
820 034 406	to 4 430	823 556 011	to 6 100	827 609 085	to 9 100	829 176 841	to 6 930
820 070 761	to 1 540	824 078 341	to 8 370	827 619 811	to 9 840	829 471 561	to 1 590
820 191 342	to 1 360	824 156 325	to 6 340	827 883 511	to 3 600	829 561 065	to 1 080
820 274 856	to 4 880	824 511 252	to 1 270	828 160 441	to 0 530	829 566 481	to 6 510
820 600 171	to 0 230	824 588 281	to 8 370	828 376 201	to 6 260	829 569 931	to 9 960

— Criminal Investigations Group, U.S. Postal Inspection Service, 4-16-26

Verifying U.S. Postal Service Money Orders

Follow these steps to cash a Postal Service™ money order:

1. Check that the amount does not exceed the legal limit: \$1,000 for domestic, and \$700 for international Postal money orders.
2. Check that the proper security features are present:
 - For the legacy, green Postal Service money orders:
 - a. Green coloring at the top and bottom.
 - b. A U.S. Mail eagle logo in the center.
 - c. A left-side watermark of Benjamin Franklin repeating top to bottom that is only visible when held up to a light source.
 - d. On the right of the Benjamin Franklin watermark, a vertical, multicolored security thread with the letters “USPS®” weaves in and out of the paper.
 - e. Discoloration around the dollar amounts might indicate the amounts were changed.
 - For the new red and blue Postal Service money orders:
 - a. Red and blue ink with subtle design features of an eagle head and an American flag.
 - b. Two watermarks that are only visible when held up to a light source:
 1. A watermark of a Pony Express® rider.
 2. A watermark that reads “United States Postal Service” in a rectangular box.

- c. A security thread that runs from the top to the bottom of the Postal Service money order, just to the right of the Pony Express rider watermark. When held to the light, the thread reveals the letters “USPS” alternating right side up and upside down throughout the thread.
- d. A Quick Response (QR) code that directs users to the USPS website to verify the status of money orders using three pieces of information.
- e. Discoloration around the dollar amounts might indicate the amounts were changed.

These features also appear at usps.com/shop/money-orders.htm.

If you or a customer suspects fraud, follow the guidance from the U.S. Postal Inspection Service:

- If you question the validity of a Postal Money Order, use the Money Order Verification System at 1-866-459-7822.
- You can also check the money order status at usps.com/shop/money-orders.htm. Go to “Check Money Order Status” and input the information.
- If you suspect fraud or criminal activity, call the Inspection Service at 1-877-876-2455 at your earliest convenience.

The legacy, green Postal Service money order will stay in circulation until all existing stock is depleted. As of October 1, 2024, USPS no longer sells international money orders. USPS will no longer cash international money orders after September 30, 2025.

— Criminal Investigations Group,
U.S. Postal Inspection Service, 4-16-26

Counterfeit Canadian Money Order Forms

Do Not Cash

To be posted and used by retail window employees. As directed, destroy previous notices. Destroy all interim notices when the numbers listed appear in the *Postal Bulletin*.

671,819,086	683,594,542	687,262,503
676,612,640	684,683,610	687,262,525
677,891,039	686,619,878	687,262,526
678,282,493	686,619,886	687,287,578
678,916,031	686,619,887	687,287,581
679,552,215	686,794,382	687,287,582
679,694,334	686,794,426	694,063,898
679,751,983	686,794,427	694,063,899
679,800,207	686,794,431	694,063,980
681,130,536	687,262,502	701,321,725
681,844,376		

— *Criminal Investigations Group,
U.S. Postal Inspection Service, 4-16-26*

Toll-Free Number Available to Verify Canadian Money Orders

The Canada Post Corporation has a toll-free number that cashing agents can call to verify the validity of Canadian Postal Money Orders. The number is 800-563-0444.

This toll-free number is printed on the back of the Canadian Postal Money Orders.

— *Criminal Investigations Group,
U.S. Postal Inspection Service, 4-16-26*

Celebrate the serenity of snow with the
Winter Landscapes
Forever® Stamps



ON SALE SEPTEMBER 19, 2025

Other Information

Overseas Military/Diplomatic Mail

Mail addressed to military and diplomatic post offices overseas is subject to certain conditions or restrictions of mailing regarding content, preparation, and handling. The APO/FPO/DPO table outlines these conditions by APO/FPO/DPO ZIP Codes™ through the use of footnoted mailing restrictions codes (see the [Restrictions](#) page following the table).

Acceptance clerks must use the table with the Retail System Software terminal to determine which APO/FPO/DPO ZIP Codes are active and which conditions of mailing apply.

The entries under “Changes” appear in bold in the following APO/FPO/DPO table:

Changes

APO/FPO/DPO	Action	Effective Date	See Restrictions
APO AE 09309	Open	4/1/2026	A-B-C-C1-C2-E1-E2-F-F1-F3-H-H1-M-N-R-R1-S-V-Z1
APO AP 96500	Close	3/30/2026	

We have eliminated “Not Active” entries from the table below to save space and paper.

APO/FPO/DPO Table

APO/ FPO/ DPO	See Restrictions	APO/ FPO/ DPO	See Restrictions	APO/ FPO/ DPO	See Restrictions	APO/ FPO/ DPO	See Restrictions
09002	A-B-C-C2-F-F3-H-N-R-S-V-Z1	09079	B-C-C2-D-E-F-F3-H-M-R-S-U	09173	B-C-C2-D-E-F-F3-H-M-R-S-U	09250	B-C-C2-D-E-F-F3-H-M-R-S-U
09005	B-C-C2-D-E-F-F3-H-M-P-R-S	09094	B-C-C2-D-F-F3-H-M-R-S-U-Z1	09174	B-C-C2-F1-F3-I3-L-N-R-R1-S-T-V-X-Z-Z1	09261	B-C-C2-D-E-F-F3-H-M-N-R-S-U-V-Z1
09008	A-B-C-C2-F-F3-H-N-R-S-V-Z1	09095	B-C-C2-D-E-F-F3-H-M-R-S-U	09175	A-B-C-C1-C2-E2-F1-F3-H1-I3-L-M-N-R-R1-S-T-V-W-X-Z-Z1	09263	B-C-C2-D-E-F-F3-H-M-R-S-U
09009	B-C-C2-D-E-F-F3-H-M-R-S-U-Z1	09096	B-C-C2-D-E-F-F3-H-M-R-S-U	09176	A-B-C-C2-F1-F3-I3-L-M-N-R-R1-S-T-V-X-Z-Z1	09265	B-C-D-F-F1-H-J-L-M-N-R-S-T-U-V-Z1
09010	B-C-C2-D-E-F-F3-H-M-R-S-U2	09103	A-B-C-C2-F-F3-H-N-R-S-V-Z1	09178	B-C-C1-C2-E2-F1-F3-I3-L-M-N-R-S-T-V-X-Z-Z1	09266	A-B-C-C2-E1-F-F1-F3-H-I1-M-R-S-U-V-X-Z1
09012	B-C-C2-D-E-F-F3-H-M-R-S-U-Z1	09104	B-C-C2-D-F-F3-H-M-R-S-U-Z1	09179	A-B-C-C1-C2-F1-F3-I2-I3-L-M-N-R-R1-S-T-V-X-Z-Z1	09276	A-B-C-C2-F-F3-I3-L-M-N-R-S-T-V-X-Z-Z1
09015	A-B-C-C1-C2-F-F1-F3-J-L-M-N-R-R1-S-V-Z1	09112	B-C-C2-D-E-F-F3-H-M-R-S-U	09180	B-C-C2-D-E-F-F3-H-M-R-S-U	09277	A-B-C-C2-E-E1-E2-F1-F3-I3-L-N-R-S-T-V-X-Z-Z1
09016	B-C-C2-D-E-F1-F3-H-M-R-S-U	09114	B-C-C2-D-E-F-F3-H-M-R-S-U	09181	A-B-B2-C-C2-E1-F1-F3-I3-L-M-N-R-S-T-V-V1-X-Z-Z1	09278	A-B-C-C2-F-F3-I3-L-M-N-R-S-T-V-X-Z-Z1
09017	A-B-C-C2-F-F3-H-N-R-S-V-Z1	09116	A-B-C-C2-F-F3-H-N-R-S-V-Z1	09203	A-B-C-C1-C2-F1-F3-I3-L-M-N-R-R1-S-T-V-X-Z-Z1	09279	A-B-C-C2-E-E1-F-F3-I3-L-M-N-R-S-T-V-X-Z-Z1
09018	A-B-C-C2-F-F3-H-N-R-S-V-Z1	09123	B-C-C2-D-E-F-F3-H-M-R-S-U-Z1	09204	B-C-F3-M-N-R-S-V-Z1	09280	A-B-C-C1-C2-E-E2-F1-F3-H-I3-L-M-N-R-S-T-V-W-X-Z-Z1
09020	B-C-C2-D-E-F-F3-H-M-R-S-U	09126	B-C-C2-F-F3-H-M-P-R-S-Z1	09205	A-B-C-C2-E2-F-F3-M-N-R-S-T-V-X	09281	A-B-C-C1-C2-E2-E3-F1-F3-H-H1-I3-L-M-N-R-R1-S-T-V-X-Z-Z1
09021	B-C-C2-D-E-F-F3-H-M-R-S-U-Z1	09128	B-C-C2-D-E-F-F3-H-M-R-S-U	09211	B-C-C2-D-E-F-F3-H-M-P-R-S-U	09282	A-B-C-C1-C2-E2-E3-F1-F3-H-H1-I3-L-M-N-R-R1-S-T-V-X-Z-Z1
09034	B-C-C2-D-E-F-F3-H-M-R-S-U	09135	A-B-C-C2-F-F3-H-N-R-S-U-V-Z1	09213	B-C-C2-F1-F3-H-I3-L-M-N-R-R1-S-T-U-V-X-Z-Z1	09283	A-B-C-C2-E-E1-F1-F3-I3-L-M-N-R-S-T-V-X-Z-Z1
09044	B-C-C2-D-E-F-F3-H-R-S-U	09136	B-C-C2-D-E-F-F3-H-M-P-R-S-U	09214	B-C-C2-D-E-F-F3-H-M-R-S-U-Z1	09284	A-B-C-C2-F1-F3-I3-L-M-N-R-S-T-V-Z
09046	B-C-C2-D-E-F-F3-H-M-R-S-U	09140	B-C-C2-D-E-F-F3-H-M-R-S-U	09216	B-C-F1-F3-M-N-R-S-V-Z1	09285	A-B-C-C2-E-E1-F1-F3-H-I3-L-M-N-R-S-T-V-X-Z-Z1
09049	B-C-C2-D-E-F-F3-H-M-R-S-U	09142	B-C-C2-D-E-F-F3-H-M-R-S-U	09227	B-C-C2-D-E-F-F3-H-M-R-S-U	09287	B-C-C2-E1-F1-F3-I3-L-N-R-S-T-V-X-Z-Z1
09053	B-C-C2-D-E-F-F3-H-M-R-S-U	09154	B-C-C2-D-E-F-F3-H-M-R-S-U	09240	A-B-C-C1-C2-F-F3-H-N-R-S-V	09288	A-B-C-C1-C2-E2-F1-F3-H-H1-I3-L-M-N-R-R1-S-T-V-X-Z-Z1
09060	B-C-C2-D-E-F-F1-F3-H-M-N-R-S-U-Z1	09160	B-C-C2-D-F1-F3-H-I3-L-M-N-R-R1-S-T-U-V-X-Z-Z1	09241	A-B-C-C2-F-F1-F3-H-I1-M-N-R-S-U-Z1		
09067	B-C-C2-D-E-F-F3-H-M-R-S-U	09170	A-B-C-C2-F1-F3-I3-L-M-N-R-R1-S-T-V-X-Z-Z1	09242	A-B-C-C1-C2-F-F3-H-N-R-S-V		
09068	B-C-C2-D-E-F3-H-R-S-U-Z1	09171	A-B-C-C1-C2-E3-F1-F3-I3-L-M-N-R-R1-S-T-V-X-Z-Z1				
09069	A-B-C-C2-D-E-F3-H-N-R-S-U-V						

APO/ FPO/ DPO	See Restrictions	APO/ FPO/ DPO	See Restrictions	APO/ FPO/ DPO	See Restrictions	APO/ FPO/ DPO	See Restrictions
09289	B-C-C2-E2-F1-F3-H1-I3-L-M-N-R-R1-S-T-U2-V-X-Z-Z1	09489	A-B-C-C1-C2-E2-F1-F3-I3-L-M-N-R-R1-S-T-V-W-X-Z-Z1	09565	B-C-C2-F-F1-F3-R-R1-S-V	09609	A-B-C-C2-D-E2-F-F1-F2-F3-H-H1-I1-M-R-S-U-V
09290	A-B-C-C1-C2-F1-F3-I3-J-L-M-N-R-S-T-U2-V-X-Z-Z1	09490	A-B-C-C1-C2-E2-F-F1-F3-H1-I3-L-M-N-R-R1-S-T-V-X-Z-Z1	09566	B-C-C2-E2-E3-F-F1-F3-R-R1-S-V	09610	B-C-C2-F-F1-F3-M-R-S-U-V-Z1
09293	A-B-C-C1-C2-E-E2-F1-F3-I3-L-M-N-R-S-T-V-X-Z-Z1	09491	A-B-C-C1-C2-E2-F1-F3-H1-I3-L-M-N-R-R1-S-T-V-X-Z-Z1	09567	B-C-C2-E2-E3-F-F1-F3-R-R1-S-V	09613	B-C-C2-F-F3-N-R-S-U-V
09296	A-B-C-C2-E1-F1-F3-I3-L-N-R-S-T-V-X-Z-Z1	09494	B-C-C1-C2-F-F3-M-R-S-U-Z1	09568	B-C-C2-F-F1-F3-R-R1-S-V	09614	A-B-C-C1-C2-E2-F1-F3-H1-I3-L-M-N-R-R1-S-T-V-W-X-Z-Z1
09297	A-B-C-C2-E-E1-F1-F3-I3-L-M-N-R-S-T-V-X-Z-Z1	09498	B-C-C1-C2-F1-F3-I3-L-M-N-R-R1-S-T-V-X-Z-Z1	09569	B-C-C2-E2-E3-F-F1-F3-R-R1-S-V-Z1	09618	B-C-C2-D-E2-F-F1-F2-F3-H-H1-I-I1-M-R-S-U-V-Z1
09298	A-B-C-C2-E-E1-F1-F3-I3-L-M-N-R-S-T-V-X-Z-Z1	09500	B-C-C2-F-F3-R-S	09573	B-C-C2-E2-E3-F-F1-F3-R-R1-S-V-Z1	09620	B-C-C2-D-E2-F-F1-F2-F3-H-H1-I-I1-M-R-S-U-V-Z1
09299	A-B-C-C2-E-E1-F1-F3-I3-L-M-N-R-S-T-V-Z-X-Z1	09501	B-V	09575	B-C-C2-F-F1-F3-R-R1-S-V	09621	B-C-C2-F-F3-R-S-U-Z1
09309	A-B-C-C1-C2-E1-E2-F-F1-F3-H-H1-M-N-R-R1-S-V-Z1	09502	B-V	09576	B-C-C2-F-F1-F3-R-R1-S-V	09622	B-C-C2-D-E2-E3-F-F1-F2-F3-H-H1-I-I1-M-R-S-U-V-Z1
09321	A-B-C-C1-C2-E2-F-F3-H1-M-N-R-R1-S-V-Z1	09503	B-F-F1-R-R1-V	09577	B-C-C2-F-F1-F3-R-R1-S-V	09623	B-C-C2-F-F3-R-S-U-V-Z1
09401	B-C-C1-C2-F-F3-M-R-S-U-Z1	09504	B-V	09578	B-C-C2-F-F1-F3-R-R1-S-V	09624	B-C-C2-F1-F3-I3-L-M-N-R-R1-S-T-U-V-X-Z1
09403	B-C-C1-C2-F-F3-M-R-S-U-Z1	09505	B-V	09579	B-C-C2-F-F1-F3-R-R1-S-V	09625	A-B-C-C1-C2-D-F-F1-F2-F3-H-H1-I1-M-N-R-S-U
09410	B-C-C2-F-F1-F3-N-R-S-U2	09506	B-C-C2-F-F3-R-S-V	09581	B-C-C2-F-F1-F3-R-R1-S-V	09627	B-C-C2-F-F3-R-S-U-V-Z1
09421	B-C-C1-C2-F-F3-M-R-S-U-Z1	09507	B-V	09582	B-C-C2-F-F1-F3-R-R1-S-V	09630	B-C-C2-F-F3-R-S-U-V
09424	B-C-C2-F1-F3-M-N-R-S-U-Z1	09508	B-C-C2-F-F3-R-R1-S-V	09583	B-C-C2-F-F1-F3-R-R1-S-V	09633	B-C-C2-D-F-F3-M-R-S-U-U1-U2-U3-V-Z1
09447	B-C-C1-C2-F-F3-M-R-S-U-V-Z1	09509	B-C-C2-F-F3-R-R1-S-V	09586	B-C-C2-F-F1-F3-R-R1-S-V	09634	A-B-C-C2-F-F3-M-N-R-S-V
09454	B-C-C1-C2-F-F3-M-R-S-U-V-Z1	09510	B-C-C2-F-F3-R-R1-S-V	09587	B-C-C2-F-F1-F3-R-R1-S-V	09636	B-C-C2-F-F3-R-S-U-V-Z1
09456	B-C-C1-C2-F-F3-M-N-R-S-U-V-Z1	09511	B-C-C2-F-F3-R-R1-S-V	09588	B-C-C2-F-F1-F3-R-R1-S-V	09642	B-C-C2-F1-F3-I3-L-M-N-R-S-T-U-V-X-Z-Z1
09459	B-C-C1-C2-F-F3-M-R-S-U-Z1	09512	B-C-C2-F-F1-F3-R-R1-S-V	09589	B-C-C2-F-F1-F3-R-R1-S-V	09643	B-C-C2-F-F3-M-R-S-U-V-Z1
09461	B-C-C1-C2-F-F3-M-P-R-S-U-Z1	09513	B-C-C2-F-F1-F3-R-R1-S-V	09591	B-C-C2-F-F1-F3-R-R1-S-V	09645	B-B2-C-C1-C2-E1-E2-F-F1-F3-M-R-S-U-X-Z1
09463	B-C-C1-C2-F-F3-M-R-S-U-Z1	09514	B-C-C2-F-F1-F3-R-R1-V	09592	B-C-C2-F-F1-F3-R-R1-S-V	09647	B-C-C2-E1-F1-F3-M-N-R-S-U-X-Z1
09464	B-C-C1-C2-F-F3-M-R-S-U-Z1	09516	B-C-C2-F-F1-F3-R-R1-S-V	09594	B-C-C1-C2-F-F1-F3-R-R1-S-V	09648	B-C-C1-C2-E1-F1-F3-M-N-R-S-U-V-X-Z1
09467	B-C-C2-E-E1-F1-F3-I3-L-M-N-R-S-T-V-X-Z-Z1	09517	B-C-C2-F-F1-F3-R-R1-S-V	09595	B-C-C2-F-F1-F3-I3-J-R-R1-S-V-V1-Z1	09649	B-C-C2-E1-F1-F3-M-N-R-S-U-X-Z1
09468	B-C-C1-C2-F-F3-M-R-S-U-Z1	09518	B-C-C2-F-F1-F3-R-R1-S-V	09599	B-F-F1-R-R1-V	09701	A-B-C-C1-C2-F1-F3-I3-L-M-N-R-R1-S-T-V-X-Z-Z1
09469	B-C-C1-C2-F-F3-R-S-U-Z1	09523	B-C-C2-F-F1-F3-R-R1-S-V	09600	B-B2-C-C1-C2-E1-E2-F-F1-F3-M-R-S-U-X-Z1	09704	B-C-C2-F-F1-F3-R-R1-S-U2-V
09470	B-C-C1-C2-F-F3-M-R-S-U-Z1	09524	B-C-C2-F-F1-F3-R-R1-S-V	09602	B-C-C2-F-F1-F3-N-R-S-U-V	09705	B-C-C1-C2-F1-F3-M-R-R1-S-U
09487	A-B-C-C1-C2-E2-F1-F3-I3-L-M-N-R-R1-S-T-V-W-X-Z-Z1	09524	B-C-C2-F-F1-F3-R-R1-S-V	09603	B-C-C2-F-F1-F3-R-S-U-V-Z1	09706	B-C-C2-F-F3-M-N-R-S-U-V-Z1
09488	A-B-C-C1-C2-E2-F1-F3-I3-L-M-N-R-S-T-V-W-X-Z-Z1	09532	B-C-C2-F-F1-F3-R-R1-S-V	09604	B-C-C2-F-F1-F3-P-R-S-U-V-Z1	09707	B-C-C2-E-F1-F3-I3-L-M-N-R-R1-S-T-V-X-Z-Z1
		09533	B-V	09605	B-C-C2-D-F-F1-F3-H-M-P-R-S-V	09708	B-C-C1-C2-F-F3-M-R-R1-S-U
		09534	B-F-F1-F3-R-R1-S-V	09606	B-C-C2-D-F-F3-H-M-R-S-U-V	09709	B-C-C2-F1-F3-I3-L-M-N-R-R1-S-T-V-X-Z-Z1
		09541	A-B-C-C2-F-F3-M-N-R-S-V-Z1	09608	B-C-C2-F-F3-N-R-S-U-V-Z1		
		09542	A-B-C-C2-F-F3-M-N-R-S-V-Z1				
		09543	A-B-C-C2-F-F3-M-N-R-S-V-Z1				
		09544	A-B-C-C2-F-F3-M-N-R-S-V-Z1				
		09545	A-B-C-C2-F-F3-M-N-R-S-V-Z1				
		09550	B-C-C2-F-F1-F3-R-R1-S-V				
		09554	B-C-C2-F-F1-F3-R-R1-S-V				
		09556	B-F-F1-R-R1-V				
		09564	B-C-C2-F-F1-F3-R-R1-S-V				

APO/ FPO/ DPO	See Restrictions	APO/ FPO/ DPO	See Restrictions	APO/ FPO/ DPO	See Restrictions	APO/ FPO/ DPO	See Restrictions
09710	B-C-C1-C2-F1-F3-I3-L-M-N-R-R1-S-T-U-V-X-Z-Z1	09741	A-B-C-C1-C2-E2-F1-F3-H1-I3-L-M-N-R-R1-S-T-V-W-X-Y-Z-Z1	09812	B-E2-E3-F-F1-I-J-L-N-R-T-U-V-Z-Z1	09862	A-B-C-C2-F1-F3-I3-L-M-N-R-R1-S-T-V-X-Z-Z1
09711	A-B-C-C2-E2-F-F1-F3-M-N-R-S-T-V-X	09742	A-B-C-C2-F1-F3-I3-L-M-N-R-S-T-V-X-Z-Z1	09813	A-B-C-C1-C2-E2-E3-F1-F3-L-N-R-R1-S-T-V-X-Z1	09864	A-B-C-C1-C2-E2-F1-F3-L-M-N-R-R1-S-T-V-W-X-Z1
09712	A-B-C-C2-F-F3-H-R-S-U-V-Z1	09743	A-B-C-C2-F-F3-H-N-R-S-V-Z1	09814	B-C-C2-E2-E3-F1-F3-I3-L-M-N-R-R1-S-T-V-X-Z-Z1	09867	A-B-C-C1-C2-E2-F1-F3-I3-L-M-N-R-R1-S-T-V-W-X-Z-Z1
09714	B-C-C1-C2-F-F3-M-R-R1-S-U	09744	A-B-C-C1-C2-F1-F3-I3-L-M-N-R-R1-S-T-V-X-Z-Z1	09816	A-B-C-C1-C2-E2-E3-F1-F3-L-M-N-R-R1-S-T-V-X-Z1	09869	A-B-C-C1-C2-E2-F1-F3-L-M-N-R-R1-S-T-V-W-X-Z1
09715	B-C-C2-F1-F3-I3-L-M-N-R-R1-S-T-V-X-Z-Z1	09745	A-B-C-C2-F-F1-F3-M-N-R-R1-S-V-Z1	09817	A-B-C-C1-C2-E2-E3-F1-F3-H-H1-L-M-N-R-R1-S-T-V-X-Z1	09892	A-B-C-C1-C2-E2-F1-F3-I3-L-M-N-R-R1-S-T-V-X-Z-Z1
09716	B-C-C2-F1-F3-I3-L-M-N-R-R1-S-T-V-X-Z-Z1	09748	A-B-C-C1-C2-F1-F3-I3-L-M-N-R-R1-S-T-V-X-Z-Z1	09818	A-B-C-C2-F-F3-M-R-S-V-Z1	09895	A-B-C-C1-C2-E2-F1-F3-L-M-N-R-S-T-V-W-X-Z1
09717	A-B-C-C2-F-F3-M-R-S-V-W-Z1	09749	A-B-C2-F-F3-H-N-R-S-U-V-Z1	09820	A-B-C-C2-F1-F3-H-H1-L-M-N-R-R1-S-T-V-X-Z1	09902	A-B-C1-C2-E2-F-F3-H1-M-R-R1-S-V-Z1
09718	B-C-C2-F1-F3-I3-L-M-N-R-R1-S-T-V-X-Z-Z1	09750	A-B-C-C1-C2-F1-F3-I3-L-M-N-R-R1-S-T-V-X-Z-Z1	09821	A-B-C-C2-F-F3-N-R-S-V-Z1	09905	A-B-C-C1-C2-E2-F-F3-H1-M-R-R1-S-V-Z1
09719	B-C-C2-D-F-F3-M-R-S-U-V-Z1	09751	B-C-C2-D-E-F-F3-H-M-R-S-U	09822	A-B-C-C2-F-F3-M-N-R-S-V-Z1	09974	B-C-C2-F1-F3-L-M-N-R-S-T-U2-V-X-Z1
09720	B-C-C2-F-F3-M-R-S-U-V-Z1	09752	B-C-C2-D-F-F3-H-R-S-U	09823	A-B-C-C1-C2-F1-F3-I2-L-M-N-R-R1-S-T-V-X-Z1	09975	B-C-C2-F1-F3-I3-L-M-N-R-S-T-U2-V-X-Z-Z1
09722	A-B-C-C2-F-F3-H-N-R-S-V-Z1	09753	A-B-C-C1-C2-D-E-F1-F3-H-M-N-R-S-V-W-Z1	09824	A-B-C-C2-F-F3-M-R-S-V-Z1	09976	B-C-C2-F1-F3-L-M-N-R-S-T-U2-V-X-Z1
09723	B-C-C2-F1-F3-I3-L-M-N-R-R1-S-T-V-X-Z-Z1	09754	A-B-C-C2-F-F3-H-N-R-S-V-Z1	09826	A-B-C-C1-C2-E1-E2-E3-F1-F3-L-M-N-R-R1-S-T-V-W-X-Z1	09977	B-C-C2-F1-F3-L-M-N-R-S-T-U2-V-X-Z1
09724	B-C-C1-C2-F-F3-M-R-R1-S-U	09755	A-B-C-C1-C2-D-F-F1-F3-J-L-M-N-Q-R-R1-S-T-V-Z1	09827	A-B-C-C2-F-F1-F3-I2-J-L-M-N-R-S-T-V-Z1	09980	B-C-C1-C2-F1-F3-I3-L-M-N-R-R1-S-T-V-X-Z-Z1
09725	A-B-C-C2-F-F3-H-N-R-S-V-V1-Z-Z1	09756	A-B-E3-F-F1-F3-J-L-N-Q-R-R1-S-T-V-Z1	09828	A-B-C-C1-C2-F1-F3-I3-L-M-N-R-R1-S-T-V-X-Z-Z1	09981	B-C-C1-C2-F1-F3-I3-L-M-N-R-R1-S-T-V-X-Z-Z1
09726	B-F-F1-L-M-N-R-T-U-V-Z1	09759	A-B-C-C1-C2-E2-F1-F3-I3-L-M-N-R-R1-S-T-V-X-Z-Z1	09831	B-C-C1-C2-F1-F3-L-M-N-R-R1-S-T-V-X-Z1	09982	B-C-C1-C2-F1-F3-I3-L-M-N-R-R1-S-T-V-X-Z-Z1
09727	A-B-C-C1-C2-F1-F3-I3-L-M-N-R-R1-S-T-V-X-Z-Z1	09761	B-C-C2-F-F1-F3-M-R-R1-S-V-Z1	09834	B-C-C2-E2-E3-F-F1-F3-R1-S-U-Z1	09983	B-C-C1-C2-F1-F3-I3-L-M-N-R-R1-S-T-V-X-Z-Z1
09728	A-B-C-C1-C2-F1-F3-I3-L-M-N-R-R1-S-T-V-X-Z-Z1	09762	A-B-C-C2-E3-F1-F3-I3-L-M-N-R-R1-S-T-V-Y-Z-Z1	09836	A-B-C-C1-C2-F1-F3-L-M-N-R-R1-S-T-V-X-Z1	09984	B-C-C1-C2-F1-F3-I3-L-M-N-R-R1-S-T-V-X-Z-Z1
09729	B-C-C2-F-F3-N-R-R1-S-U-V-Z1	09769	A-B-C-C2-E3-F1-F3-I3-L-M-N-R-R1-S-T-V-Y-Z-Z1	09837	B-E2-E3-F1-F3-R-S-V-Z1	34000	B-C-C2-F-F3-R-S
09730	A-B-C-C1-C2-F1-F3-I3-L-M-N-R-R1-S-T-V-X-Z-Z1	09777	A-B-C-C1-C2-E1-F1-F3-I3-L-M-N-R-R1-S-T-V-X-Z-Z1	09838	B-C-C2-E2-E3-F-F1-F3-R-S-U-Z1	34001	A-B-C-C1-C2-F1-F3-I3-L-M-N-R-R1-S-T-V-X-Z-Z1
09731	A-B-C-C1-C2-F1-F3-I3-L-M-N-R-R1-S-T-V-X-Z-Z1	09780	A-B-C2-F-F3-H-N-R-S-V	09842	A-B-C-C1-C2-E3-F1-F3-L-M-N-R-R1-S-T-V-X-Z1	34002	B-C-C1-C2-F1-F3-I3-L-M-N-R-R1-S-T-V-X-Z-Z1
09732	B-C-C2-F-F3-N-R-S-V-Z-Z1	09802	A-B-C-C2-D-F1-F3-H-H1-I3-L-M-N-R-R1-S-T-V-W-X-Z-Z1	09845	A-B-C-C1-C2-E3-F1-F3-L-M-N-R-R1-S-T-V-X-Z1	34004	B-C-C1-C2-F1-F3-I3-L-M-N-R-R1-S-T-V-X-Z-Z1
09733	B-C-C2-F-F3-N-R-S-V-Z	09804	A-B-C-C2-F-F1-F3-M-N-R-S-V-Z1	09848	A-B-C2-F-F3-M-R-S-V-Z1	34007	B-C-C2-F-F1-F3-H-J-M-N-R-R1-S-V-Z1
09734	A-B-C-C1-C2-F1-F3-I3-L-M-N-R-R1-S-T-V-X-Z-Z1	09805	B-C-C2-E2-E3-F-F1-F3-R-R1-S-Z1	09846	A-B-C-C1-C2-F1-F3-L-M-N-R-R1-S-T-V-X-Z1	34008	B-C-C1-C2-D-E1-F1-F3-H-H1-I3-L-M-N-R-R1-S-T-V-X-Z-Z1
09735	B-C-C2-F-F3-N-R-S-V-Z-Z1	09806	A-B-C-C1-C2-E2-F-F1-F3-H1-L-M-N-R-R1-S-T-V-Z1	09854	A-B-C-C1-C2-F1-F3-L-M-N-R-R1-S-T-V-X-Z1	34009	B-C-C2-F-F1-F3-R-S-V
09736	A-B-C-C1-C2-F1-F3-I3-L-M-N-R-R1-S-T-V-X-Z-Z1	09808	A-B-C-C1-C2-E2-F-F1-F3-H-H1-L-M-N-R-R1-S-T-V-X-Z1	09855	B-C-C1-C2-F-F1-F3-H-H1-L-M-N-S-T-V-Z1	34010	B-C-C2-F-F1-F3-R-S-V
09737	A-B-C-C1-C2-F1-F3-I3-L-M-N-R-R1-S-T-V-W-X-Y-Z-Z1	09810	A-B-C-C2-F-F1-F3-N-R-S-V-Z1	09856	B-C-C1-C2-F-F1-F3-H-H1-L-M-N-S-T-V-Z1	34011	B-C-C1-C2-E2-F1-F3-I3-L-M-N-R-R1-S-T-V-X-Z-Z1
09738	A-B-C-C1-C2-F1-F3-I3-L-M-N-R-R1-S-T-V-X-Z-Z1			09857	A-B-C-C2-E2-F1-F3-I3-L-M-N-R-R1-S-T-V-X-Z-Z1	34013	B-C-C2-F-F1-F3-R-S-V
09739	A-B-C-C1-C2-F1-F3-I3-L-M-N-R-R1-S-T-V-X-Z-Z1			09859	B-C-C1-C2-E2-E3-F-F1-F3-H1-R-R1-S-U-Z1	34020	B-C-C1-C2-F1-F3-I3-L-M-N-R-R1-S-T-V-X-Z-Z1
				09860	A-B-C-C2-F1-F3-L-M-N-R-R1-S-T-V-X-Z1	34021	B-C-C1-C2-F1-F3-I3-L-M-N-R-R1-S-T-V-X-Z-Z1
						34022	B-C-C1-C2-F1-F3-I3-L-M-N-R-R1-S-T-V-X-Z-Z1

APO/ FPO/ DPO	See Restrictions	APO/ FPO/ DPO	See Restrictions	APO/ FPO/ DPO	See Restrictions	APO/ FPO/ DPO	See Restrictions
34023	B-C-C1-C2-F1-F3-I3-L-M-N-R-R1-S-T-V-X-Z-Z1	34085	B-C-C1-C2-E2-E3-F-F1-F3-H1-R-R1-S-T-V-V1	96271	A-B-C-C2-F-F1-F3-I1-M-P-R-S-T-U2	96374	B-C-C2-F-F3-M-R-S-T-U2-W
34024	B-C-C1-C2-F1-F3-I3-L-M-N-R-R1-S-T-V-X-Z-Z1	34086	B-C-C1-C2-E2-E3-F-F1-F3-H1-J-R-R1-S-T-V-V1	96273	A-B-C-C2-F-F1-F3-I1-M-R-S-T-U	96375	B-C-C2-F-F3-M-R-S-W
34025	B-C-C1-C2-F1-F3-I3-L-M-N-R-S-T-V-X-Z-Z1	34087	B-C-C2-E2-F-F1-F3-R-R1-S-V	96275	A-B-C-C2-F-F1-F3-M-R-S-U	96376	B-C-C2-F-F3-I1-M-R-S-T-U2-W
34030	B-C-C1-C2-F1-F3-I3-L-M-N-R-R1-S-T-V-X-Z-Z1	34088	B-C-C2-F-F1-F3-R-R1-S-V	96276	A-B-C-C2-F1-F3-R-S	96377	B-C-C2-F-F3-M-R-S-W
34031	B-C-C1-C2-F1-F3-I3-L-M-N-R-R1-S-T-V-X-Z-Z1	34089	B-C-C2-F-F1-F3-R-R1-S-V	96278	A-B-C-C2-F1-F3-R-S-U	96379	B-C-C2-F-F3-M-R-S-W
34032	B-C-C1-C2-F1-F3-I3-L-M-N-R-R1-S-T-V-X-Z-Z1	34090	B-C-C2-F-F1-F3-R-R1-S-V	96283	A-B-F-F1-F3-M-R-S-U	96384	B-C-C2-F-F3-M-R-S-W
34033	B-C-C1-C2-F1-F3-I3-L-M-N-R-S-T-V-X-Z-Z1	34091	B-C-C2-E2-E3-F-F1-F3-R-R1-S-V-Z1	96284	A-B-C-C2-F-F1-F3-I1-M-N-R-S-T-U	96386	B-C-C2-F-F3-M-R-S-W
34034	B-C-C1-C2-F1-F3-I3-L-M-N-R-R1-S-T-V-X-Z-Z1	34092	B-C-C2-F-F1-F3-R-R1-S-V-Z1	96297	A-B-C-C2-F-F1-F3-I1-M-R-S-T-U	96387	B-C-C2-F-F3-M-R-S-W
34035	B-C-C1-C2-F1-F3-H-I3-L-M-N-R-R1-S-T-V-X-Z-Z1	34093	B-C-C2-F-F1-F3-R-R1-S-V	96301	A-B-C-C2-F-F1-F3-M-N-R-S-T-U2-W	96388	B-C-C2-F-F3-M-R-S-W
34036	B-C-C1-C2-F1-F3-I3-L-M-N-R-R1-S-T-V-X-Z-Z1	34094	B-F-F1-F3-R-R1-S-V	96303	B-C-C1-C2-F1-F3-H-I3-L-M-N-R-S-T-V-W-X-Z-Z1	96401	B-C-F-F3-N-R-S-V-V1-Z1
34037	B-C-C1-C2-F1-F3-H-I3-L-M-N-R-R1-S-T-V-X-Z-Z1	34095	B-F-F1-R-R1-V	96306	B-F-F1-F2-F3-H-M-R-S-W-Z1	96502	A-B-C-C1-C2-F-F1-F3-J-M-N-R-R1-S-T-U-V
34038	B-C-C1-C2-F1-F3-H-I3-L-M-N-R-R1-S-T-V-X-Z-Z1	96201	A-B-F-F1-F3-I1-M-R-S-U	96309	B-C-C2-F-F1-F3-M-N-R-S-V-W	96503	A-B-C-C2-D-E1-E2-F-F1-F3-H-H1-M-N-R-S-T-Z1
34039	B-C-C1-C2-F1-F3-I3-L-M-N-R-R1-S-T-V-X-Z-Z1	96202	A-B-C-C2-F-F1-F3-I1-M-R-S-T-U	96310	B-C-C2-F-F3-M-R-S-W	96504	A-B-C-C1-C2-F1-F3-I3-L-M-N-R-R1-S-T-V-W-X-Z-Z1
34041	B-C-C1-C2-F1-F3-I3-L-M-N-R-R1-S-T-V-X-Z-Z1	96204	A-B-C-C2-F-F1-F3-I1-M-R-S-T-U2	96311	B-C-C2-F-F3-M-R-S-W	96505	A-B-C-C1-C2-F1-F3-I3-L-M-N-R-R1-S-T-V-W-X-Z-Z1
34042	A-B-C-F-F1-F3-M-N-R-S-U-V-W-Z1	96205	A-B-C-C2-F-F1-F3-I1-M-P-R-S-T-U2	96315	B-C-C2-F-F3-M-R-S-W	96506	A-B-C-C2-D-E1-E2-F-F1-F3-H-H1-M-N-R-S-T-Z1
34045	B-C-C1-C2-F1-F3-I3-L-M-N-R-R1-S-T-V-X-Z-Z1	96206	A-B-C-C2-F-F1-F3-I1-M-R-S-T-U	96319	B-C-C2-F3-M-R-S-W	96507	A-B-C-C1-C2-F1-F3-H-I3-L-M-N-R-S-T-V-X-Z-Z1
34058	B-C-C2-F-F1-F2-F3-I1-N-R-R1-S-V-Z1	96208	A-B-C-C2-F-F1-F3-I1-M-R-S-T-U2	96321	B-F-F1-F2-F3-H-M-R-S-W-Z1	96508	A-B-C-C2-D-E1-E2-F-F1-F3-H-H1-I1-I2-M-N-R-S-T-Z1
34060	B-C-C1-C2-E2-F1-F3-I3-L-M-N-R-R1-S-T-V-X-Z-Z1	96209	A-B-C-C1-C2-F1-F3-I3-L-M-N-R-S-T-U-V-X-Z-Z1	96322	B-C-C2-F-F1-F2-F3-H-M-R-S-W-Z1	96511	B-I3-N-V
34061	B-C-C2-F-F1-F3-R-S-V	96210	A-B-C-C1-C2-F1-F3-I3-L-M-N-R-R1-S-T-V-X-Z-Z1	96326	B-C-C2-F-F3-M-R-S-W	96515	B-C-D-E1-F-F1-F3-H-H1-M-N-R-S-T-Z1
34066	B-C-C1-C2-F1-F3-I3-L-M-N-R-R1-S-T-V-X-Z-Z1	96212	B-F-F1-F2-H-M-W-Z1	96328	B-C-C2-F3-M-R-S-W	96516	B-C-C2-D-E1-E2-F-F1-F3-H-H1-I1-I2-M-N-R-S-T-Z1
34067	B-C-C1-C2-F1-F3-I3-L-M-N-R-R1-S-T-V-X-Z-Z1	96213	A-B-C-C2-F1-F3-N-R-S	96331	A-B-C-C2-F-F1-F3-J-L-M-N-R-S-U2-W	96517	B-C-C2-D-E1-E2-F-F1-F3-H-H1-I1-I2-M-N-R-S-T-U-V-Z1
34068	B-C-C1-C2-F1-F3-I3-L-M-N-R-R1-S-T-V-X-Z-Z1	96214	A-B-C-C2-F1-F3-N-R-S-U	96336	B-C-C2-F3-M-R-S-V-W	96520	A-B-C-C1-C2-E1-F1-F3-I3-L-M-N-R-R1-S-T-V-X-Z-Z1
34069	B-C-C1-C2-F1-F3-I3-L-M-N-R-R1-S-T-V-X-Z-Z1	96215	A-B-C-C2-F-F1-F3-M-R-S-U	96337	B-C-C2-F-F1-F3-M-R-R1-S-W	96521	B-C-C1-C2-F-F1-F3-I3-L-M-N-R-R1-S-T-V-X-Z-Z1
34070	A-B-C-C2-E3-F1-F3-I3-L-M-N-R-S-T-V-X-Z-Z1	96218	A-B-C-C2-F-F1-F3-I1-M-R-S-T-U	96338	A-B-C-C2-F-F1-F3-M-R-S-T-U2-W	96530	A-B-C-C1-C2-F1-F3-H-H1-I3-L-M-N-R-R1-S-T-V-X-Z-Z1
34071	A-B-C-C2-F1-F3-I3-L-M-N-R-S-T-V-W-X-Z-Z1	96224	A-B-C-C2-F-F1-F3-I1-M-R-S-T-U	96339	A-B-C-C2-F-F3-M-N-R-S-U2-W	96531	A-B-C-C2-F-F1-F3-H-M-N-R-S-U-V
34072	B-C-C2-F1-F3-I3-L-M-N-R-S-T-V-X-Z-Z1	96251	A-B-C-C2-F-F1-F3-I1-M-R-S-T-U	96343	A-B-C-C2-F-F3-M-P-R-S-U2	96532	A-B-C-C1-C2-F1-F3-H-I3-L-M-N-R-R1-S-T-V-X-Z-Z1
34073	B-C-C2-E1-F1-F3-I3-L-M-N-R-S-T-V-X-Z-Z1	96257	A-B-C-C2-F-F1-F3-I1-M-R-S-T-U2	96346	B-F-F1-F2-F3-H-M-R-S-W-Z1	96534	A-B-C-C2-F-F1-F2-F3-R-R1-S-U-V-Z1
34078	B-C-C2-F1-F3-N-R-S-V-Z1	96258	B-C-C2-F-F1-F3-M-P-R-S	96347	B-C2-F-F1-F2-F3-H-M-R-S-W-Z1	96535	A-B-C-C1-C2-F1-F3-I3-L-M-N-R-R1-S-T-V-X-Z-Z1
34080	B-F-F1-R-R1-V	96260	A-B-C-C2-F-F1-F3-I1-M-R-S-T-U	96349	B-C-C2-F-F1-F2-F3-H-M-R-S-Z1	96537	B-C-C2-F1-F2-F3-R-S-V-Z1
34081	B-F-F1-R-R1-V	96262	A-B-C2-F-F1-F3-R-S-U-V-Z1	96350	B-F-F1-F2-F3-H-M-R-S-W-Z1	96539	A-C-C2-D-E1-E2-F-F1-F3-H-H1-M-N-R-S-T-Z1
34082	B-F-F1-R-R1-V	96264	A-B-C-C2-F1-F3-R-S-U	96351	B-C-C2-F-F1-F2-F3-H-M-R-S-Z1		
34083	B-F-F1-R-R1-V	96266	A-B-C-C2-F1-F3-R-S-U	96362	B-C2-F-F1-F2-F3-H-M-R-S-W-Z1		
34084	B-F-F1-R-R1-V	96268	A-B-C-C2-F3-R-F1-S-Z1	96365	B-C-C2-F-F3-M-R-S-V-W		
		96269	A-B-C-C2-F1-F2-F3-R-S-U-Z1	96367	B-C-C2-E1-F3-M-R-S-U2-W		
				96368	B-C-C2-F3-M-R-S-W		
				96370	A-B-C-C2-F-F1-F2-F3-H-M-R-S-U2-W-Z1		
				96371	B-C-C2-F-F3-M-R-S-W		

APO/ FPO/ DPO	See Restrictions	APO/ FPO/ DPO	See Restrictions	APO/ FPO/ DPO	See Restrictions	APO/ FPO/ DPO	See Restrictions
96540	B-C-C2-F1-F2-F3-R-S-V-Z1	96595	B-F-F3-R-S-V-Z1	96644	B-V	96673	B-C-C2-F-F1-F3-R-R1-S-V
96542	B-C-C2-F-F1-F2-F3-R-S-V	96598	B-C-C2-F3-I3-N-R-S-V-V1	96645	B-V	96674	B-C-C2-F-F1-F3-R-R1-S-V
96543	B-C-C2-F-F1-F2-F3-P-R-S-V	96599	B-C-C2-F3-N-R-S-V	96649	B-C-C2-F-F1-F3-R-R1-S-V	96675	B-C-C2-F-F1-F3-R-R1-S-V
96548	A-B-C-C2-F-F1-F3-H-M-R-S-U	96601	B-V	96650	B-F-F1-R-R1-V	96677	B-C-C2-F-F1-F3-R-R1-S-V
96549	A-B-C-C1-C2-F1-F3-H-I3-L-M-N-R-R1-S-T-V-X-Z-Z1	96602	B-V	96657	B-C-C2-F-F1-F3-R-R1-S-V	96678	B-C-C2-F-F1-F3-R-R1-S-V
96550	A-B-H-M-N-U-V-Z1	96603	B-V	96660	B-C-C2-F-F1-F3-R-R1-S-V	96679	B-C-C2-F-F1-F3-R-R1-S-V
96551	A-B-C-C1-C2-F1-F3-H-I3-L-M-N-R-R1-S-T-V-X-Z-Z1	96604	B-V	96661	B-C-C2-F-F1-F3-R-R1-S-V	96681	B-C-C2-F-F1-F3-R-S-V
96552	B-Z1	96605	B-V	96662	B-C-C2-F-F1-F3-R-R1-S-V	96682	B-C-C2-F-F1-F3-R-R1-S-V
96553	A-B-C-C2-F-F1-F3-H-M-N-R-S-U	96607	B-V	96663	B-C-C2-F-F1-F3-R-R1-S-V	96683	B-C-C2-F-F1-F3-R-R1-S-V
96554	A-B-C-C1-C2-F1-F3-H-I3-L-M-N-R-R1-S-T-V-X-Z-Z1	96610	B-C-C2-F-F3-H1-R-R1-S-U2-V-Z1	96664	B-C-C2-F-F1-F3-R-R1-S-V	96686	B-C-C2-F-F1-F3-R-R1-S-V
96555	A-B-C-C2-F-F1-F3-I1-M-R-S-T-U2-V	96611	B-C-C2-F-F3-H1-R-R1-S-U2-V-Z1	96665	B-C-C2-F-F1-F3-R-R1-S-V	96691	B-C-C2-F-F1-F3-R-R1-S-V
96557	A-B-C-C2-F-F1-F3-I1-M-R-S-T-U2-V	96612	B-C-C2-F-F3-H1-R-R1-S-U2-V-Z1	96666	B-C-C2-F-F1-F3-R-R1-S-V	96692	B-C-C2-E2-F-F1-F3-R-R1-S-V
96562	A-B-C-C1-C2-D-E2-E3-F1-F3-H-H1-I3-LM-N-R-R1-S-T-V-X-ZZ1	96613	B-C-C2-F-F3-H1-R-R1-S-U2-V-Z1	96667	B-C-C2-F-F1-F3-R-R1-S-V	96693	B-C-C2-F-F1-F3-R-R1-S-V
96577	A-B-C-C2-F-F3-H-M-N-R-S-U	96615	B-F-F1-R-R1-V	96668	B-C-C2-F-F1-F3-R-R1-S-V	96694	B-C-C2-F-F1-F3-R-R1-S-V
96578	B-C-C2-F1-F3-H-J-N-R-S-Z1	96616	B-C2-F-F1-F3-R-R1-S-V	96669	B-C-C2-F-F1-F3-R-R1-S-V	96695	B-C-C2-F-F1-F3-R-R1-S-V
96579	C-C2-E1-F1-F3-H-H1-M-R-S-U2-V	96619	B-C-C2-F1-F3-R-S-V	96670	B-C-C2-F-F1-F3-R-R1-S-V	96696	B-F-F1-R-R1-V
		96620	B-C-C2-F-F1-F3-R-R1-S-V	96671	B-C-C2-F-F1-F3-R-R1-S-V	96698	B-C-C2-F-F1-F3-R-R1-S-V
		96628	B-C-C2-F-F1-F3-R-R1-S-V	96672	B-C-C2-F-F1-F3-R-R1-S-V		
		96629	B-C-C2-F-F1-F3-R-R1-S-V				
		96632	B-C-C2-F-F1-F3-R-R1-S-V				
		96633	B-V				
		96641	B-V				
		96642	B-V				
		96643	B-F-F1-F3-R-R1-S-V				

RESTRICTIONS

LEGEND

PS Form 2976, *Customs — CN 22 (Old C 1) and Sender's Declaration*
 PS Form 2976-A, *Customs Declaration and Dispatch Note*
 PS Form 2976-B, *Priority Mail Express International Shipping Label and Customs Form*

ATF = Bureau of Alcohol, Tobacco, Firearms, and Explosives
 Box C = Department of State (DOS) contractor personnel
 Box R = Retired military personnel
 DPO = Diplomatic Post Office
 MPO = Military Post Office
 PACT = Prevent All Cigarette Trafficking Act
 PAL = Parcel Airlift
 PMEMS = Priority Mail Express Military Service
 PUB 52 = Publication 52, *Hazardous, Restricted, and Perishable Mail*
 SAM = Space Available Mail
 USDA = United States Department of Agriculture

Note: Mail order catalogs are prohibited as SAM or PAL mail.

A. Securities, currency, or precious metals, including in their raw, unmanufactured state, are prohibited. Official Mail shipments are exempt from this restriction.

A1. Reserved for future use.

A2. Reserved for future use.

B. A customs declaration PS Form 2976 or PS Form 2976-A is required for all items weighing 16 ounces or more, and for all items (regardless of weight) containing potentially dutiable mail contents (e.g., merchandise or goods) addressed to or from this ZIP Code. All PMEMS mailpieces (regardless of mail content or weight) addressed to or from this ZIP Code must bear a properly completed PS Form 2976-B. The surface area of the address side of the mailpiece must be large enough to contain the applicable electronic customs declaration.

B2. Reserved for future use.

C. Cigarettes and other tobacco products, including tobacco leaves, chewing and pipe tobacco, snuff, and cigars are prohibited, including those that are authorized in Publication 52 under PACT.

C1. Obscene and horror articles, images, prints, paintings, cards, films, videotapes, comic books, etc., are prohibited.

C2. E-cigarettes and related products (e.g., nicotine liquids, e-liquids, parts, or supplies) are prohibited.

D. Coffee is prohibited.

E. Medicines (prescription, over-the-counter, vitamins, and supplements) are prohibited when mailed to individuals for human or animal use. This prohibition does not apply when medicines are sent as Official Mail only between specifically designated agencies such as pharmaceutical distributors, hospitals, clinics, and pharmacies.

E1. Mailers are responsible to ensure that all medicines and vaccines conform to host nation laws.

E2. Any matter depicting nude or seminude persons, pornographic, or sexual items are prohibited. Non-authorized political materials are prohibited. Religious materials contrary to the Islamic faith are prohibited in bulk quantities, but individual items for the personal use of the addressee are permissible.

E3. Radio transceivers, cordless/cellular telephones, global positioning systems, scanners, base stations, and handheld transmitters are prohibited.

F. Firearms of any type are prohibited, except firearms mailed to or by official U.S. government agencies. This restriction does not apply to firearms mailed from this MPO ZIP Code, provided ATF and USPS regulations are met. Antique firearms do not require an ATF form.

F1. Weapons of any type are prohibited.

F2. Mailing firearms to or from this MPO ZIP Code is restricted to one shotgun and one single shot .22 caliber rifle per individual.

F3. Replica weapons and inert explosive devices (such as grenades) and weapons parts are prohibited.

G. Parcels of any class are prohibited.

H. Meats, including preserved meats, bones, skin, hair, feathers, horns or hoofs of hoofed animals, and wool samples whether hermetically sealed or not, are prohibited.

H1. Pork or pork by-products are prohibited.

I. Electronic items of all kinds are prohibited.

I1. Items containing lithium cells and batteries of all kinds are prohibited - including those permitted under 135.6.

I2. Liquids of any type are prohibited.

I3. Mail of all classes must fit in a mail sack. Mail may not exceed the following dimensions:

■ Maximum length 27 inches.

■ Maximum width 14 inches.

■ Maximum height 14 inches.

J. Standard Post and Parcel Select parcels may not exceed 108 inches in length and girth combined.

K. Reserved for future use.

L. All Official Mail is prohibited.

M. Fruits, vegetables, live animals, and live plants are prohibited.

N. Registered Mail service is prohibited.

O. Reserved for future use.

P. Official Mail only.

Q. Mail may not exceed 66 pounds, and size is limited to 42 inches maximum length and 72 inches maximum length and girth combined.

R. All alcoholic beverages, including those mailable under Publication 52, Part 421, are prohibited.

R1. Materials used in the production of alcoholic beverages (i.e., distilling material, hops, malts, yeast, etc.) are prohibited.

S. Synthetic cannabinoids used to stimulate the central nervous system commonly known as "synthetic marijuana," "K2," or "Spice" are prohibited.

T. Mailings of household shipments and case lots of food to or from an MPO require military transportation office approval prior to mailing. Mailings to or from a DPO require pre-approval from the Diplomatic Pouch and Mail Director.

U. Mail addressed to Retirees (Box R) is limited to 16 ounces and up to a 90-day supply of TRICARE medications. This restriction does not apply to mail endorsed "Free Matter for the Blind or Handicapped."

U1. Mail is limited to First-Class Mail items, including audio and video media, weighing 13 ounces or less. This limitation does not apply to Official Mail.

U2. Retirees (Box R) are not authorized mail service.

U3. Reserved for future use.

U4. Mail addressed to Box C is limited to 2 lbs.

V. PMEMS is not available.

V1. Electronic Delivery status information for Extra Services is not available on *USPS.com*. Manual record of delivery may be available upon request.

W. Hermetically sealed packages of meat products bearing USDA certification, such as dried beef, salami, and sausage, may be mailed. 200 grams of tobacco per parcel are permitted duty free.

X. Cremated remains are prohibited.

Y. Mail is limited to First-Class Mail and Priority Mail items only. This restriction also applies to Official Mail.

Z. No outside pieces (OSPs).

Z1. The following restriction is applicable only to International Service Centers (ISC)/Exchange Offices. An Anti-Pilferage Seal (Item No O817E or O818A) is required on all pouches and sacks.

— *International Operations and Logistics,
 Global Business, 4-16-26*

Freely Associated States Restrictions

We list the mailing restrictions for Freely Associated States (FAS) in the Pull-Out section of the *Postal Bulletin*. All FAS Restrictions will be updated periodically.

Freely Associated States

Mail addressed to freely associated states is subject to certain conditions or restrictions of mailing regarding content, preparation, and handling. The following FAS Restrictions table outlines these conditions as listed by each affected FAS ZIP Code™ through the use of footnoted mailing restrictions codes (see the [Restrictions](#) following the table). For more information on available extra services for FAS destinations, see *Mailing Standards of the United States Postal Service, Domestic Mail Manual (DMM®)*, part 503.

Acceptance clerks must use the table with the Retail System Software terminal to determine which FAS ZIP Codes are active and which conditions of mailing apply.

FAS Restrictions Table

FAS Table	See Restrictions
96939	A, B
96940	A, B
96941	A, B
96942	A, B
96943	A, B
96944	A, B
96960	A, B
96970	A, B, D
Marshall Islands	C
Federated States of Micronesia	C

RESTRICTIONS LEGEND

PS Form 2976, *Customs Declaration CN 22 – Sender's Declaration*

PS Form 2976-A, *Customs Declaration and Dispatch Note*

FAS = Freely Associated State

- A.** Bank currency (coin and paper) is prohibited.
- B.** Signature Confirmation, Signature Confirmation Restricted Delivery, Adult Signature Requested, Adult Signature Restricted Delivery, Certified Mail Adult Signature Required, and Certified Mail Adult Signature Restricted Delivery not available.
- C.** Collect on Delivery is prohibited.
- D.** Betel nut (Areca catechu) is prohibited.

— *Asia-Pacific Relations,
Global Business, 4-16-26*

Stamp Announcement 26-18: Treasures of the Revolutionary Era Prestige Booklet (continued)

The Postal Service reserves the right to not accept hand-painted and other cachet envelopes that are not compatible with our digital color postmark equipment. The Postal Service also reserves the right to substitute traditional black rubber postmarks if use of non-specified envelopes results in poor image quality or damage to equipment.

Customers must affix the stamps to the envelopes and address them to themselves or others for return through the mail. Or they may include an additional self-addressed return envelope, large enough to accommodate their canceled items, with sufficient postage affixed for return of their postmarked items.

After applying the first-day-of-issue postmark, the Postal Service will return the envelopes to the customer by U.S. Mail®.

How to Order First-Day Covers

The Postal Service also offers first-day covers for new stamp issues and Postal Service stationery items post-marked with the official first-day-of-issue cancellation. Each item has an individual catalog number and is offered in the *USA Philatelic* catalog and online at store.usps.com/store/home. Customers may register to receive a free *USA Philatelic* catalog online at usps.com/philatelic.

Locally produced items are not authorized. Only merchandise that has been approved and assigned an item number by Headquarters Retail Marketing may be produced and sold.

Technical details will appear in a future edition of the *Postal Bulletin*.

— Stamp Services,
Marketing, 4-16-26

Stamp Announcement 26-19: American Bison Stamp



© 2025 USPS

On May 25, 2026, in Boston, MA, the United States Postal Service® will issue the *American Bison* stamp (Forever® priced at the First-Class Mail® rate), in one design, in a pressure-sensitive adhesive (PSA) pane of 16 stamps (Item 488800). This stamp will go on sale nationwide May 25, 2026, and must not be sold or canceled before the first-day-of-issue.

This stamp celebrates our national mammal, the American bison, commonly known as the buffalo. Overlaying a contemporary photograph of the animal is artwork recalling a buffalo stamp issued in 1923. The photograph, taken by Tom Murphy, shows a wild buffalo in profile, seen grazing within Yellowstone National Park. The issuance title, “AMERICAN BISON,” appears on the selvage and under it, “BOSTON 2026 WORLD STAMP SHOW,” where the stamp will be issued in May 2026. Art director Greg Breeding designed the stamp.

Availability to Post Offices: Item 488800, American Bison (Forever Priced at the First-Class Mail Rate) Pane of 16 Stamps

Stamp Fulfillment Services will make an automatic push distribution to Post Offices of a quantity to cover approximately 30 days of sales. Distribution quantities for the automatic push distribution will be available by logging on to SFS Web at sfsweb.usps.gov. Post Offices may begin ordering stamps before the first-day-of-issue through SFS Web; offices must also check the amount they will receive on their automatic push distribution.

How to Order the First-Day-of-Issue Postmark

The first-day-of-issue postmark is a postmark notating the day a stamp is first authorized for use by the Postal Service™. Customers have 120 days to obtain the first-day-of-issue postmark by mail. All requests for first-day-of-issue postmarks (Traditional or Digital Color Postmark)

should be sent to the following address with the choice of Traditional or Digital Color Postmark identified. All orders must be postmarked by September 25, 2026.

FDOI – American Bison Stamp
 USPS Stamp Fulfillment Services
 8300 NE Underground Drive, Suite 300
 Kansas City, MO 64144-9900

Traditional Black and White Postmarks

Customers may purchase new stamps at their local Post Office™ or at The Postal Store® website at store.usps.com/store/home. They must affix the stamps to envelopes of their choice, address envelopes (to themselves or others), and place them in a larger envelope and mail to the above address.

After applying the first-day-of-issue postmark, the Postal Service will return the envelopes through the mail. There is no charge for the postmark up to a quantity of 50. There is a 5-cent charge for each additional postmark over 50.

Customers can also submit collectable paper items or memorabilia of their choice for a black and white cancellation. The request must include packaging large enough to accommodate their canceled items along with sufficient postage affixed for the return of their postmarked item.

If the canceled item is not mailable by First-Class, and return packaging with postage is not provided, the order must include a way to contact the customer for payment. Payment for quantities greater than 50 cancels and/or postage for shipping must be submitted by check, money order, or credit card.

Digital Color Postmarks

Only select stamp issues offer a digital color postmark. Digital color postmarks can only be affixed to paper products. Customers may submit #6 or #10 envelopes constructed of paper rated as “laser safe.” The Postal Service™ recommends envelopes of 80-pound Accent Opaque, acid-free, 9/16-inch side seams with no glue on the flap. The maximum size of all digital color postmarks is 2 inches (vertically) by 4 inches (horizontally). Allow sufficient space on the envelope to accommodate the postmark. Do not use self-adhesive labels for addresses on the envelope. Two test envelopes must be included. There is a 50-cent charge per postmark at the time of servicing. Customers must submit a check, money order, or credit card for payment.

The Postal Service reserves the right to not accept hand-painted and other cachet envelopes that are not compatible with our digital color postmark equipment. The Postal Service also reserves the right to substitute traditional black rubber postmarks if use of non-specified envelopes results in poor image quality or damage to equipment.

Customers must affix the stamps to the envelopes and address them to themselves or others for return through the mail. Or they may include an additional self-addressed return envelope, large enough to accommodate their canceled items, with sufficient postage affixed for return of their postmarked items.

After applying the first-day-of-issue postmark, the Postal Service will return the envelopes to the customer by U.S. Mail®.

How to Order First-Day Covers

The Postal Service also offers first-day covers for new stamp issues and Postal Service stationery items postmarked with the official first-day-of-issue cancelation.

Each item has an individual catalog number and is offered in the *USA Philatelic* catalog and online at store.usps.com/store/home. Customers may register to receive a free *USA Philatelic* catalog online at usps.com/philatelic.

Locally produced items are not authorized. Only merchandise that has been approved and assigned an item number by Headquarters Retail Marketing may be produced and sold.

Technical details will appear in a future edition of the *Postal Bulletin*.

— Stamp Services,
Marketing, 4-16-26

Stamp Announcement 26-20: Postcrossing Stamps



© 2026 USPS

On May 26, 2026, in Boston, MA, the United States Postal Service® will issue the *Postcrossing* Global Forever® International rate stamp, in four designs, in a pressure-sensitive adhesive (PSA) pane of 8 stamps (Item 582300). These stamps will go on sale nationwide May 26, 2026, and must not be sold or canceled before the first-day-of-issue. **The *Postcrossing* Global Forever® International rate pane of 8 stamps must not be split and the stamps must not be sold individually.**

These stamps recognize the Postcrossing website for highlighting the fun of receiving real, personalized mail and promoting greater understanding across countries and cultures. Since 2005, Postcrossing has inspired more than 805,000 people in more than 200 countries and territories to send more than 85 million postcards to eager recipients around the world. These stamps may be used to send a postcard or letter from the United States to any country to which First-Class Mail International® service is available. These stamps will have a postage value equivalent to the price of the single-piece First-Class Mail International first-ounce machineable letter in effect at the time of use. Issued in panes of eight, these triangular stamps feature colorful illustrations by Jackson Gibbs. Antonio Alcalá served as designer and art director.

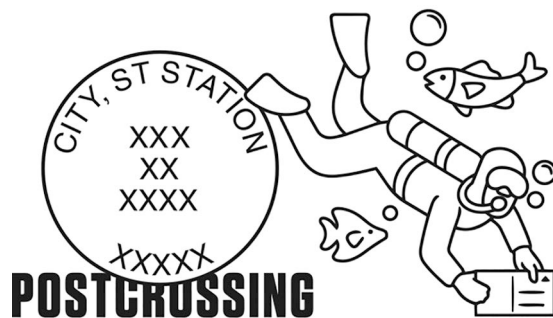
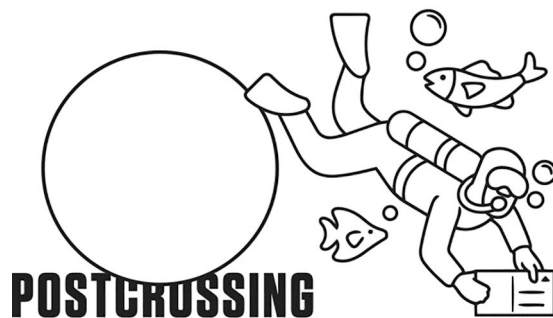
Availability to Post Offices: Item 582300, Postcrossing (Global Forever priced at the First-Class International Mail Rate) Pane of 8 Stamps

Stamp Fulfillment Services will make an automatic push distribution to Post Offices of a quantity to cover approximately 30 days of sales. Distribution quantities for the automatic push distribution will be available by logging on to

SFS Web at sfsweb.usps.gov. Post Offices may begin ordering stamps prior to the first-day-of-issue through SFS Web; offices must also check the amount they will receive on their automatic push distribution.

Special Dedication Postmarks

Only the following pictorial postmark is permitted for the Postcrossing stamps. The word “Station” or the abbreviation “STA” is required somewhere in the design because it will be a temporary station. **Use of any image other than the following special pictorial image is prohibited.**



Guidelines for Finalizing Postcrossing Stamps Pictorial Postmark Art

To finalize the Postcrossing stamps pictorial postmark art, insert the date, city, state, and ZIP Code™ of the physical location of your event adjacent to the stamp image. Overall dimensions of the pictorial postmark must not exceed 4 inches (horizontally) by 2 inches (vertically). Collectors prefer the dimensions 3-1/2 inches by 1 inch.

The Postal Service™ must make all special postmarks known to collectors through advance publicity in the Postal Bulletin. Therefore, all special dedication cancellations must be reported to Stamp Services four weeks before the event using PS Form 413, *Pictorial Postmark Announcement/Report*. To get a copy of the form, go to blue.usps.gov/form-mgmt/forms/ps413.pdf.

How to Order the First-Day-of-Issue Postmark

The first-day-of-issue postmark is a postmark notating the day a stamp is first authorized for use by the Postal Service. Customers have 120 days to obtain the first-day-of-issue postmark by mail. All requests for first-day-of-issue postmarks (Traditional or Digital Color Postmark) must be sent to the following address with the choice of Traditional or Digital Color Postmark identified. All orders must be postmarked by September 26, 2026.

FDOI – Postcrossing Stamps
USPS Stamp Fulfillment Services
8300 NE Underground Drive, Suite 300
Kansas City, MO 64144-9900

Traditional Black and White Postmarks

Customers may purchase new stamps at their local Post Office™ or at The Postal Store® website at store.usps.com/store/home. They must affix the stamps to envelopes of their choice, address envelopes (to themselves or others), and place them in a larger envelope and mail to the above address.

After applying the first-day-of-issue postmark, the Postal Service will return the envelopes through the mail. There is no charge for the postmark up to a quantity of 50. There is a 5-cent charge for each additional postmark over 50.

Customers can also submit collectable paper items or memorabilia of their choice for a black and white cancellation. The request must include packaging large enough to accommodate their canceled items along with sufficient postage affixed for the return of their postmarked item.

If the canceled item is not mailable by First-Class, and return packaging with postage is not provided, the order must include a way to contact the customer for payment. Payment for quantities greater than 50 cancels and/or postage for shipping must be submitted by check, money order, or credit card.

Digital Color Postmarks

Only select stamp issues offer a digital color postmark. Digital color postmarks can only be affixed to paper products. Customers may submit #6 or #10 envelopes constructed of paper rated as “laser safe.” The Postal Service recommends envelopes of 80-pound Accent Opaque,

acid-free, 9/16-inch side seams with no glue on the flap. The maximum size of all digital color postmarks is 2 inches (vertically) by 4 inches (horizontally). Allow sufficient space on the envelope to accommodate the postmark. Do not use self-adhesive labels for addresses on the envelope. Two test envelopes must be included. There is a 50-cent charge per postmark at the time of servicing. Customers must submit a check, money order, or credit card for payment.

The Postal Service reserves the right to not accept hand-painted and other cachet envelopes that are not compatible with our digital color postmark equipment. The Postal Service also reserves the right to substitute traditional black rubber postmarks if use of non-specified envelopes results in poor image quality or damage to equipment.

Customers must affix the stamps to the envelopes and address them to themselves or others for return through the mail. Or they may include an additional self-addressed return envelope, large enough to accommodate their canceled items, with sufficient postage affixed for return of their postmarked items.

After applying the first-day-of-issue postmark, the Postal Service will return the envelopes to the customer by U.S. Mail®.

How to Order First-Day Covers

The Postal Service also offers first-day covers for new stamp issues and Postal Service stationery items postmarked with the official first-day-of-issue cancellation. Each item has an individual catalog number and is offered in the *USA Philatelic* catalog and online at store.usps.com/store/home. Customers may register to receive a free *USA Philatelic* catalog online at usps.com/philatelic.

Locally produced items are not authorized. Only merchandise that has been approved and assigned an item number by Headquarters Retail Marketing may be produced and sold.

Technical details will appear in a future edition of the *Postal Bulletin*.

— Stamp Services,
Marketing, 4-16-26

Stamp Announcement 26-21: International Peace Stamp



© 2025 USPS

On May 27, 2026, in Boston, MA, the United States Postal Service® will issue the *International Peace* stamp (Forever® priced at the First-Class Mail® rate), in one design, in a pressure-sensitive adhesive (PSA) pane of 20 stamps (Item 488700). This stamp will go on sale nationwide May 27, 2026, and must not be sold or canceled before the first-day-of-issue.

This new stamp celebrates the goal of world peace. The stamp art features a photograph of an origami crane — a symbol of peace. The crane was folded by artist and founder of the Peace Crane Project, Sue DiCicco, then photographed by Sally Andersen-Bruce. Art director Antonio Alcalá designed the stamp.

Availability to Post Offices: Item 488700, International Peace (Forever Priced at the First-Class Mail Rate) Pane of 20 Stamps

Stamp Fulfillment Services will make an automatic push distribution to Post Offices of a quantity to cover approximately 30 days of sales. Distribution quantities for the automatic push distribution will be available by logging on to SFS Web at sfsweb.usps.gov. Post Offices may begin ordering stamps prior to the first-day-of-issue through SFS Web; offices must also check the amount they will receive on their automatic push distribution.

How to Order the First-Day-of-Issue Postmark

The first-day-of-issue postmark is a postmark notating the day a stamp is first authorized for use by the Postal Service™. Customers have 120 days to obtain the first-day-of-issue postmark by mail. All requests for first-day-of-issue postmarks (Traditional or Digital Color Postmark) should be sent to the following address with the choice of Traditional

or Digital Color Postmark identified. All orders must be postmarked by September 27, 2026.

FDOI – International Peace Stamp
USPS Stamp Fulfillment Services
8300 NE Underground Drive, Suite 300
Kansas City, MO 64144-9900

Traditional Black and White Postmarks

Customers may purchase new stamps at their local Post Office™ or at The Postal Store® website at store.usps.com/store/home. They must affix the stamps to envelopes of their choice, address envelopes (to themselves or others), and place them in a larger envelope and mail to the above address.

After applying the first-day-of-issue postmark, the Postal Service will return the envelopes through the mail. There is no charge for the postmark up to a quantity of 50. There is a 5-cent charge for each additional postmark over 50.

Customers can also submit collectable paper items or memorabilia of their choice for a black and white cancellation. The request must include packaging large enough to accommodate their canceled items along with sufficient postage affixed for the return of their postmarked item.

If the canceled item is not mailable by First-Class, and return packaging with postage is not provided, the order must include a way to contact the customer for payment. Payment for quantities greater than 50 cancels and/or postage for shipping must be submitted by check, money order, or credit card.

Digital Color Postmarks

Only select stamp issues offer a digital color postmark. Digital color postmarks can only be affixed to paper products. Customers may submit #6 or #10 envelopes constructed of paper rated as “laser safe.” The Postal Service recommends envelopes of 80-pound Accent Opaque, acid-free, 9/16-inch side seams with no glue on the flap. The maximum size of all digital color postmarks is 2 inches (vertically) by 4 inches (horizontally). Allow sufficient space on the envelope to accommodate the postmark. Do not use self-adhesive labels for addresses on the envelope. Two test envelopes must be included. There is a 50-cent charge per postmark at the time of servicing. Customers must submit a check, money order, or credit card for payment.

The Postal Service reserves the right to not accept hand-painted and other cachet envelopes that are not compatible with our digital color postmark equipment. The Postal Service also reserves the right to substitute traditional black rubber postmarks if use of non-specified envelopes results in poor image quality or damage to equipment.

Customers must affix the stamps to the envelopes and address them to themselves or others for return through the mail. Or they may include an additional self-addressed return envelope, large enough to accommodate their canceled items, with sufficient postage affixed for return of their postmarked items.

After applying the first-day-of-issue postmark, the Postal Service will return the envelopes to the customer by U.S. Mail®.

How to Order First-Day Covers

The Postal Service also offers first-day covers for new stamp issues and Postal Service stationery items post-marked with the official first-day-of-issue cancellation. Each item has an individual catalog number and is offered in the *USA Philatelic* catalog and online at store.usps.com/store/home. Customers may register to receive a free *USA Philatelic* catalog online at usps.com/philatelic.

Locally produced items are not authorized. Only merchandise that has been approved and assigned an item number by Headquarters Retail Marketing may be produced and sold.

Issue:	<i>International Peace Stamp</i>
Item Number:	488700
Denomination & Type of Issue:	First-Class Mail Forever
Format:	Pane of 20 (1 design)
Series:	N/A
Issue Date & City:	May 27, 2026, Boston, MA 02205
Art Director:	Antonio Alcalá, Alexandria, VA
Designer:	Antonio Alcalá, Alexandria, VA
Photographer:	Sally Andersen-Bruce, New Milford, CT
Modeler:	Daryl DeMont
Manufacturing Process:	Offset, Microprint
Printer:	Ashton Potter (USA) Ltd. (APU)
Press Type:	Muller A76
Stamps per Pane:	20
Print Quantity:	22,000,000 stamps
Paper Type:	Nonphosphored Type III, Block Tag Applied
Adhesive Type:	Pressure-sensitive
Colors:	Cyan, Magenta, Yellow, Black
Stamp Orientation:	Horizontal
Image Area (w x h):	1.4200 x 1.0850 in. / 36.0680 x 27.5590 mm.
Overall Size (w x h):	1.5600 x 1.2250 in. / 39.6240 x 31.1150 mm.
Full Pane Size (w x h):	8.2600 x 8.2600 in. / 209.8040 x 209.8040 mm.
Press Sheets Size (w x h):	24.7800 x 25.2800 in. / 629.4120 x 642.1120 mm.
Plate Size:	180 stamps per revolution
Plate Number:	“P” followed by four (4) single digits
Marginal Markings:	
Front:	Header: INTERNATIONAL PEACE • Plate number in bottom two corners of pane
Back:	© 2025 USPS • USPS logo • Two barcodes (488700) • Plate position diagram (9) • Promotional text

– Stamp Services,
Marketing, 4-16-26

Stamp Announcement 26-22: North American Soccer Stamp



© 2026 USPS

On May 28, 2026, in Boston, MA, the United States Postal Service® will issue the *North American Soccer* stamp (Forever® priced at the First-Class Mail® rate), in one design, in a pressure-sensitive adhesive (PSA) pane of 20 stamps (Item 488900). This stamp will go on sale nationwide May 28, 2026, and must not be sold or canceled before the first-day-of-issue.

This stamp celebrates the long history and rapid growth of soccer in the U.S. as our nation prepares to co-host the 2026 FIFA World Cup, the biggest sporting event in the world. The stamp art is an illustration of a player striking a volley above the famous “Gooooal!” call, used by commentators and fans to express excitement about scoring a goal. Art director Antonio Alcalá designed the stamp.

Availability to Post Offices: Item 488900, North American Soccer (Forever Priced at the First-Class Mail Rate) Pane of 20 Stamps

Stamp Fulfillment Services will make an automatic push distribution to Post Offices of a quantity to cover approximately 30 days of sales. Distribution quantities for the automatic push distribution will be available by logging on to SFS Web at sfsweb.usps.gov. Post Offices may begin ordering stamps before the first-day-of-issue through SFS Web; offices must also check the amount they will receive on their automatic push distribution.

How to Order the First-Day-of-Issue Postmark

The first-day-of-issue postmark is a postmark notating the day a stamp is first authorized for use by the Postal Service™. Customers have 120 days to obtain the first-day-of-issue postmark by mail. All requests for first-day-of-issue postmarks (Traditional or Digital Color Postmark) must be

sent to the following address with the choice of Traditional or Digital Color Postmark identified. All orders must be postmarked by September 28, 2026.

FDOI – North American Soccer Stamp
USPS Stamp Fulfillment Services
8300 NE Underground Drive, Suite 300
Kansas City, MO 64144-9900

Traditional Black and White Postmarks

Customers may purchase new stamps at their local Post Office™ or at The Postal Store® website at store.usps.com/store/home. They must affix the stamps to envelopes of their choice, address envelopes (to themselves or others), and place them in a larger envelope and mail to the above address.

After applying the first-day-of-issue postmark, the Postal Service will return the envelopes through the mail. There is no charge for the postmark up to a quantity of 50. There is a 5-cent charge for each additional postmark over 50.

Customers can also submit collectable paper items or memorabilia of their choice for a black and white cancellation. The request must include packaging large enough to accommodate their canceled items along with sufficient postage affixed for the return of their postmarked item.

If the canceled item is not mailable by First-Class, and return packaging with postage is not provided, the order must include a way to contact the customer for payment. Payment for quantities greater than 50 cancels and/or postage for shipping must be submitted by check, money order, or credit card.

Digital Color Postmarks

Only select stamp issues offer a digital color postmark. Digital color postmarks can only be affixed to paper products. Customers may submit #6 or #10 envelopes constructed of paper rated as “laser safe.” The Postal Service recommends envelopes of 80-pound Accent Opaque, acid-free, 9/16-inch side seams with no glue on the flap. The maximum size of all digital color postmarks is 2 inches (vertically) by 4 inches (horizontally). Allow sufficient space on the envelope to accommodate the postmark. Do not use self-adhesive labels for addresses on the envelope. Two test envelopes must be included. There is a 50-cent charge per postmark at the time of servicing. Customers must submit a check, money order, or credit card for payment.

The Postal Service reserves the right to not accept hand-painted and other cachet envelopes that are not compatible with our digital color postmark equipment. The Postal Service also reserves the right to substitute traditional black rubber postmarks if use of non-specified envelopes results in poor image quality or damage to equipment.

Customers must affix the stamps to the envelopes and address them to themselves or others for return through the mail. Or they may include an additional self-addressed return envelope, large enough to accommodate their canceled items, with sufficient postage affixed for return of their postmarked items.

After applying the first-day-of-issue postmark, the Postal Service will return the envelopes to the customer by U.S. Mail®.

How to Order First-Day Covers

The Postal Service also offers first-day covers for new stamp issues and Postal Service stationery items postmarked with the official first-day-of-issue cancellation. Each item has an individual catalog number and is offered in the *USA Philatelic* catalog and online at store.usps.com/store/home. Customers may register to receive a free *USA Philatelic* catalog online at usps.com/philatelic.

Locally produced items are not authorized. Only merchandise that has been approved and assigned an item number by Headquarters Retail Marketing may be produced and sold.

Technical details will appear in a future edition of the *Postal Bulletin*.

— Stamp Services,
Marketing, 4-16-26

Update: Stamp Announcement 26-13: Figures of the American Revolution Stamps

In the article “Stamp Announcement 26-13: Figures of the American Revolution Stamps,” in *Postal Bulletin* 22697 (03-05-26, pages 10 and 31), the technical details were not included.

Below are the technical details for the *Figures of the American Revolution* stamps.

Issue:	<i>Figures of the American Revolution</i> Stamps
Item Number:	488300
Denomination & Type of Issue:	First-Class Mail Forever®
Format:	Pane of 25 (25 designs)
Series:	N/A
Issue Date & City:	April 10, 2026, Washington, DC 20066
Art Director:	Ethel Kessler, Bethesda, MD
Designer:	Ethel Kessler, Bethesda, MD
Artist:	Alex Bostic, Starkville, MS
Artist:	Julia Bottoms, Buffalo, NY
Artist:	Marc Burckhardt, Austin, TX
Artist:	Michael J. Deas, New Orleans, LA
Artist:	Sharon Irla, Tallahquah, OK
Artist:	Gary Kelley, Cedar Falls, IA
Artist:	Juliana Kolesova
Artist:	Kam Mak, Brooklyn, NY
Artist:	Tim O'Brien, Brooklyn, NY
Artist:	Karla Ortiz, San Francisco, CA
Artist:	Dale Stephanos, Foxboro, MA
Illustrator:	Roberto Parada, Arlington, VA
Modeler:	Sandra Lane / Michelle Finn
Manufacturing Process:	Offset / Flexographic
Printer:	Banknote Corporation of America
Press Type:	Gallus RCS
Stamps per Pane:	25
Print Quantity:	18,125,000 stamps
Paper Type:	Phosphor, Block Tag
Adhesive Type:	Pressure-sensitive
Colors:	Cyan, Magenta, Yellow, Black
Stamp Orientation:	Vertical
Image Area (w x h):	0.8400 x 1.4200 in. / 21.3360 x 36.0680 mm.
Overall Size (w x h):	0.9800 x 1.5600 in. / 24.8920 x 39.6240 mm.
Full Pane Size (w x h):	7.5000 x 10.3750 in. / 190.5000 x 263.5250 mm.
Press Sheets Size (w x h):	15.0000 x 20.7500 in. / 381.0000 x 527.0500 mm.
Plate Size:	100 stamps per revolution
Plate Number:	“B” followed by four (4) single digits
Marginal Markings:	
Front:	Header: FORGING AMERICA'S BOLD NEW BEGINNING THROUGH COURAGE, LEADERSHIP, AND SACRIFICE • Plate number in bottom two corners of pane
Back:	© 2025 USPS • USPS logo • Two barcodes (488300) • Plate position diagram (4) • Promotional text

— Stamp Services,
Marketing, 4-16-26

Update: Stamp Announcement 26-14: Happy Birthday Stamp

In the article “Stamp Announcement 26-14: Happy Birthday Stamp,” in *Postal Bulletin* 22698 (03-19-26, pages 34–35), the technical details were not included.

Below are the technical details for the *Happy Birthday* Stamps.

Issue:	<i>Happy Birthday</i> Stamp
Item Number:	582200
Denomination & Type of Issue:	First-Class Mail Forever®
Format:	Pane of 20 (1 design)
Series:	N/A
Issue Date & City:	April 18, 2026, Providence, RI 02904
Art Director:	Greg Breeding, Charlottesville, VA
Designer:	Lisa Congdon, Portland, OR
Artist:	Lisa Congdon, Portland, OR
Modeler:	Sandra Lane / Michelle Finn
Manufacturing Process:	Offset, Microprint
Printer:	Banknote Corporation of America
Press Type:	Alprinta 74
Stamps per Pane:	20
Print Quantity:	40,000,000 stamps
Paper Type:	Phosphor, Block Tag
Adhesive Type:	Pressure-sensitive
Colors:	Custom Blue, Magenta, Yellow, Black
Stamp Orientation:	Vertical
Image Area (w x h):	0.7700 x 1.0500 in. / 19.5580 x 26.6700 mm.
Overall Size (w x h):	0.9100 x 1.1900 in. / 23.1140 x 30.2260 mm.
Full Pane Size (w x h):	5.7600 x 5.5500 in. / 146.3040 x 140.9700 mm.
Press Sheets Size (w x h):	11.5200 x 22.2000 in. / 292.6080 x 563.8800 mm.
Plate Size:	320 stamps per revolution
Plate Number:	“B” followed by four (4) single digits
Marginal Markings:	
Front:	Plate number in four corners of pane
Back:	© 2026 USPS • USPS logo • Two barcodes (582200) • Plate position diagram (8) • Promotional text

— Stamp Services,
Marketing, 4-16-26

Update: Stamp Announcement 26-16: Route 66 Stamps

In the article “Stamp Announcement 26-16: Route 66 Stamps,” in *Postal Bulletin* 22699 (04-02-26, pages 33–34), the technical details were not included.

Below are the technical details for the *Route 66 Stamps*.

Issue:	<i>Route 66 Stamps</i>
Item Number:	488400
Denomination & Type of Issue:	First-Class Mail Forever®
Format:	Pane of 16 (8 designs)
Series:	N/A
Issue Date & City:	May 5, 2026, Phoenix, AZ 85026
Art Director:	Greg Breeding, Charlottesville, VA
Designer:	Greg Breeding, Charlottesville, VA
Existing Photos:	David Schwartz, Lakewood, OH
Modeler:	Daryl DeMont
Manufacturing Process:	Offset
Printer:	Ashton Potter (USA) Ltd. (APU)
Press Type:	Muller A76
Stamps per Pane:	16
Print Quantity:	26,000,000 stamps
Paper Type:	Nonphosphored Type III, Block Tag Applied
Adhesive Type:	Pressure-sensitive
Colors:	Cyan, Magenta, Yellow, Black
Stamp Orientation:	Square
Image Area (w x h):	1.0850 x 1.0850 in. / 27.5590 x 27.5590 mm.
Overall Size (w x h):	1.2250 x 1.2250 in. / 31.1150 x 31.1150 mm.
Full Pane Size (w x h):	8.0500 x 5.9300 in. / 204.4700 x 150.6220 mm.
Press Sheets Size (w x h):	24.6500 x 12.1100 in. / 626.1100 x 307.5940 mm.
Plate Size:	192 stamps per revolution
Plate Number:	“P” followed by four (4) single digits
Marginal Markings:	
Front:	ROUTE 66 Road Sign
Back:	ROUTE 66 Road Sign • Descriptive Text • Map of United States identifying Route 66 and locations • © 2025 USPS • USPS logo • Two barcodes (488400) • Plate position diagram (6) • Promotional text

— Stamp Services,
Marketing, 4-16-26

Update: Stamp Announcement 26-17: Bald Eagle: Hatchling to Adult Stamps

In the article “Stamp Announcement 26-17: Bald Eagle: Hatchling to Adult Stamps,” in *Postal Bulletin* 22699 (04-02-26, pages 35–36), the technical details were not included.

Below are the technical details for the *Bald Eagle: Hatchling to Adult Stamps*.

Issue:	<i>Bald Eagle: Hatchling to Adult Stamps</i>
Item Number:	488500
Denomination & Type of Issue:	First-Class Mail Forever®
Format:	Pane of 20 (5 designs)
Series:	N/A
Issue Date & City:	May 14, 2026, Wabasha, MN 55981
Art Director:	Dery Noyes, Washington, DC
Designer:	Dery Noyes, Washington, DC
Illustrator:	David Allen Sibley, Deerfield, MA
Existing Selvage Photo:	Craig Goodwin
Modeler:	Sandra Lane / Michelle Finn
Manufacturing Process:	Offset/Flexographic
Printer:	Banknote Corporation of America
Press Type:	Gallus RCS
Stamps per Pane:	20
Print Quantity:	22,000,000 stamps
Paper Type:	Phosphor, Block Tag
Adhesive Type:	Pressure-sensitive
Colors:	Cyan, Magenta, Yellow, Black
Stamp Orientation:	Vertical
Image Area (w x h):	1.0850 x 1.4200 in. / 27.5590 x 36.0680 mm.
Overall Size (w x h):	1.2250 x 1.5600 in. / 31.1150 x 39.6240 mm.
Full Pane Size (w x h):	10.0000 x 7.2000 in. / 254.0000 x 182.8800 mm.
Press Sheets Size (w x h):	14.5250 x 20.1250 in. / 368.9350 x 511.1750 mm.
Plate Size:	80 stamps per revolution
Plate Number:	“B” followed by four (4) single digits
Marginal Markings:	
Front:	Header: Bald Eagle • <i>Hatchling to Adult</i> • Plate number in bottom two corners of pane
Back:	© 2025 USPS • USPS logo • Two barcodes (488500) • Plate position diagram (4) • Promotional text

— Stamp Services,
Marketing, 4-16-26

Pictorial Postmarks Announcement

As a community service, the Postal Service™ offers pictorial postmarks to commemorate local events celebrated in communities throughout the nation. A list of events for which pictorial postmarks are authorized appears on the following pages. The sponsor of the pictorial postmark appears in italics under the date. Also provided are illustrations of these postmarks.

People attending these local events may get the postmark in person at the temporary Post Office™ station established there. Those who cannot attend the event but who wish to get the postmark may submit a mail order request. Pictorial postmarks are available only for the dates indicated, and *requests must be postmarked no later than 30 days after the requested pictorial postmark date.*

All requests must include a stamped envelope or postcard bearing at least the minimum First-Class Mail® postage. Items submitted for postmark may not include

postage issued after the date of the requested postmark. Such items will be returned unserved.

Customers who want a postmark must affix stamps to any envelope or postcard of their choice, address the envelope or postcard to themselves or others, insert a card of postcard thickness in envelopes for sturdiness, and tuck in the flap. Place the envelope or postcard in a larger envelope and address it to: Pictorial Postmarks, followed by the Name of the Station, Address, City, State, ZIP+4® Code, as listed next to the postmark.

Customers can also send stamped envelopes and postcards without addresses for postmark, as long as they supply a larger envelope with adequate postage and their return address. After applying the pictorial postmark, the Postal Service returns the items (with or without addresses) under addressed protective cover.

The following pictorial postmark has been extended for 30 days:



Zip Meets Date Sta.
Pembroke Pines, FL 33026

March 30, 2026

Miami DADE PCC
Zip Meets Date Sta.
Postmaster
P.O. Box 19998
West Palm Beach, FL 33416



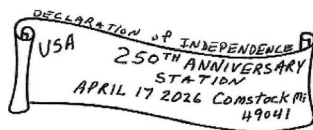
March 30-April 30, 2026

United States Postal Service
The Earth Station
Postmaster
P.O. Box 9998
Leeds, NY 12451



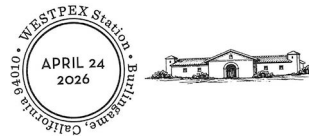
April 24, 2026

United States Postal Service
Arbor Day Station
Postmaster
186 Russell Street
Hadley, MA 01035



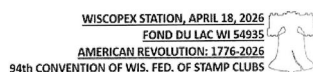
April 17, 2026

Kalamazoo Stamp Club
Declaration of
Independence 250th
Anniversary Station
Postmaster
P.O. Box 9998
Comstock, MI 49041



April 24-26, 2026

WESTPEX
WESTPEX Station
Postmaster
329 Primrose Road
Burlingame, CA 94010-
9998



April 18, 2026

Fond du Lac Stamp Club
WISCOPEX Station
Postmaster
99 West 2nd Street
Fond du Lac, WI 54935



April 24-26, 2026

WESTPEX
WESTPEX Station
Postmaster
329 Primrose Road
Burlingame, CA 94010-
9998

— Stamp Services,
Marketing, 4-16-26

How to Order the First-Day-of-Issue Digital Color or Traditional Postmarks

Customers have 120 days to obtain the first-day-of-issue postmarks by mail. Each cover must have sufficient postage to meet First-Class Mail® requirements. Customers may purchase new stamps at their local Post Office™, by phone at 844-737-7826, or on The Postal Store® website at usps.com/shop.

Digital Color Postmarks

Only select stamp issues offer a digital color postmark. Customers may submit #6 or #10 envelopes constructed of paper rated as "laser safe." The Postal Service™ recommends envelopes of 80-pound Accent Opaque, acid-free, 9/16-inch side seams with no glue on the flap. The maximum size of all digital color postmarks is 2 inches (vertically) by 4 inches (horizontally). Allow sufficient space on the envelope to accommodate the postmark. Do not use self-adhesive labels for addresses on the envelope. Two test envelopes must be included. There is a 50-cent charge per postmark at the time of servicing. Customers must submit a check, money order, or credit card for payment.

The Postal Service reserves the right to not accept hand-painted and other cachet envelopes that are not compatible with our digital color postmark equipment. The Postal Service also reserves the right to substitute traditional black rubber postmarks if use of nonspecified envelopes results in poor image quality or damage to equipment.

Customers must affix the stamps to the envelopes and address them to themselves or others for return through the mail. Or, they may include an additional self-addressed return envelope, large enough to accommodate their canceled items, with sufficient postage affixed for return of

their postmarked items. Address customer requests for digital color postmarks to:

FDI – (Name of Stamp Issue)
USPS Stamp Fulfillment Services
8300 NE Underground Drive, Suite 300
Kansas City, MO 64144-9900

After applying the first-day-of-issue postmark, the Postal Service will return the envelopes to the customer by U.S. Mail®.

Traditional Postmarks

Customers must affix the stamps to the envelopes and address them to themselves or others for return through the mail. Or, they may include an additional self-addressed return envelope, large enough to accommodate their canceled items, with sufficient postage affixed for return of their postmarked items. Address customer requests for traditional postmarks to:

FDI – (Name of Stamp Issue)
USPS Stamp Fulfillment Services
8300 NE Underground Drive, Suite 300
Kansas City, MO 64144-9900

After applying the first-day-of-issue postmark, the Postal Service will return the envelopes to the customer by U.S. Mail. There is no charge for the first 50 postmarks. There is a 5-cent charge for each additional postmark over 50. Customers must submit a check, money order, or credit card for payment.

Locally produced items are not authorized. Only merchandise that has been approved and assigned an item number by Headquarters Retail Marketing may be produced and sold.



FIRST DAY OF ISSUE

FDI – Angel’s Trumpets Stamp

USPS Stamp Fulfillment Services
8300 NE Underground Drive, Suite 300
Kansas City, MO 64144-9900

May 9, 2026

Black and White Pictorial



FDI – Muhammad Ali Stamps

USPS Stamp Fulfillment Services
8300 NE Underground Drive, Suite 300
Kansas City, MO 64144-9900

May 15, 2026

Digital Color Pictorial

**FDI – Muhammad Ali Stamps**

USPS Stamp Fulfillment Services
8300 NE Underground Drive, Suite 300
Kansas City, MO 64144-9900

May 15, 2026

Black and White Pictorial

**FDI – Love Stamps**

USPS Stamp Fulfillment Services
8300 NE Underground Drive, Suite 300
Kansas City, MO 64144-9900

May 13, 2026

Digital Color Pictorial

**FDI – Love Stamps**

USPS Stamp Fulfillment Services
8300 NE Underground Drive, Suite 300
Kansas City, MO 64144-9900

May 13, 2026

Black and White Pictorial

**FDI – Colorado Statehood Stamp**

USPS Stamp Fulfillment Services
8300 NE Underground Drive, Suite 300
Kansas City, MO 64144-9900

May 24, 2026

Digital Color Pictorial

**FDI – Colorado Statehood Stamp**

USPS Stamp Fulfillment Services
8300 NE Underground Drive, Suite 300
Kansas City, MO 64144-9900

May 24, 2026

Black and White Pictorial

**FDI – Phillis Wheatley Stamp**

USPS Stamp Fulfillment Services
8300 NE Underground Drive, Suite 300
Kansas City, MO 64144-9900

May 29, 2026

Digital Color Pictorial

**FDI – Phillis Wheatley Stamp**

USPS Stamp Fulfillment Services
8300 NE Underground Drive, Suite 300
Kansas City, MO 64144-9900

May 29, 2026

Black and White Pictorial



FDI – Lunar New Year • Year of the Horse Stamp
 USPS Stamp Fulfillment Services
 8300 NE Underground Drive, Suite 300
 Kansas City, MO 64144-9900

June 3, 2026

Digital Color Pictorial



FDI – Lunar New Year • Year of the Horse Stamp
 USPS Stamp Fulfillment Services
 8300 NE Underground Drive, Suite 300
 Kansas City, MO 64144-9900

June 3, 2026

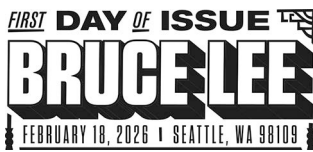
Black and White Pictorial



FDI – Bruce Lee Stamp
 USPS Stamp Fulfillment Services
 8300 NE Underground Drive, Suite 300
 Kansas City, MO 64144-9900

June 18, 2026

Digital Color Pictorial



FDI – Bruce Lee Stamp
 USPS Stamp Fulfillment Services
 8300 NE Underground Drive, Suite 300
 Kansas City, MO 64144-9900

June 18, 2026

Black and White Pictorial



FDI – Harriet Powers Stamps
 USPS Stamp Fulfillment Services
 8300 NE Underground Drive, Suite 300
 Kansas City, MO 64144-9900

June 28, 2026

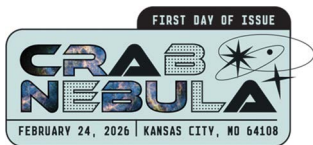
Digital Color Pictorial



FDI – Harriet Powers Stamps
 USPS Stamp Fulfillment Services
 8300 NE Underground Drive, Suite 300
 Kansas City, MO 64144-9900

June 28, 2026

Black and White Pictorial



FDI – Crab Nebula Stamp
 USPS Stamp Fulfillment Services
 8300 NE Underground Drive, Suite 300
 Kansas City, MO 64144-9900

June 24, 2026

Digital Color Pictorial



FIRST DAY OF ISSUE

FDI – Crab Nebula Stamp

USPS Stamp Fulfillment Services
8300 NE Underground Drive, Suite 300
Kansas City, MO 64144-9900

June 24, 2026

Black and White Pictorial**FDI – Galaxy Pair Stamp**

USPS Stamp Fulfillment Services
8300 NE Underground Drive, Suite 300
Kansas City, MO 64144-9900

June 24, 2026

Digital Color Pictorial

FIRST DAY OF ISSUE

FDI – Galaxy Pair Stamp

USPS Stamp Fulfillment Services
8300 NE Underground Drive, Suite 300
Kansas City, MO 64144-9900

June 24, 2026

Black and White Pictorial**FDI – Lowriders Stamps**

USPS Stamp Fulfillment Services
8300 NE Underground Drive, Suite 300
Kansas City, MO 64144-9900

July 13, 2026

Digital Color Pictorial**FDI – Lowriders Stamps**

USPS Stamp Fulfillment Services
8300 NE Underground Drive, Suite 300
Kansas City, MO 64144-9900

July 13, 2026

Black and White Pictorial**FDI – Sunflowers Stamp**

USPS Stamp Fulfillment Services
8300 NE Underground Drive, Suite 300
Kansas City, MO 64144-9900

July 14, 2026

Digital Color Pictorial

FIRST DAY OF ISSUE

FDI – Sunflowers Stamp

USPS Stamp Fulfillment Services
8300 NE Underground Drive, Suite 300
Kansas City, MO 64144-9900

July 14, 2026

Black and White Pictorial



FDOI – Figures of the American Revolution Stamps

USPS Stamp Fulfillment Services
8300 NE Underground Drive, Suite 300
Kansas City, MO 64144-9900

August 10, 2026

Digital Color Pictorial



FDOI – Figures of the American Revolution Stamps

USPS Stamp Fulfillment Services
8300 NE Underground Drive, Suite 300
Kansas City, MO 64144-9900

August 10, 2026

Black and White Pictorial

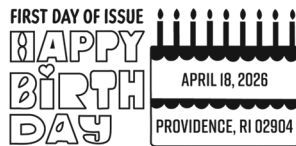


FDOI – Happy Birthday Stamp

USPS Stamp Fulfillment Services
8300 NE Underground Drive, Suite 300
Kansas City, MO 64144-9900

August 18, 2026

Digital Color Pictorial



FDOI – Happy Birthday Stamp

USPS Stamp Fulfillment Services
8300 NE Underground Drive, Suite 300
Kansas City, MO 64144-9900

August 18, 2026

Black and White Pictorial

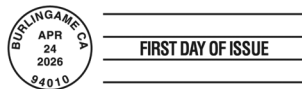


FDOI – A Day at the Beach Stamps

USPS Stamp Fulfillment Services
8300 NE Underground Drive, Suite 300
Kansas City, MO 64144-9900

August 24, 2026

Digital Color Pictorial



FDOI – A Day at the Beach Stamps

USPS Stamp Fulfillment Services
8300 NE Underground Drive, Suite 300
Kansas City, MO 64144-9900

August 24, 2026

Black and White Pictorial



FDOI – Route 66 Stamps

USPS Stamp Fulfillment Services
8300 NE Underground Drive, Suite 300
Kansas City, MO 64144-9900

September 5, 2026

Digital Color Pictorial

**FDOI – Route 66 Stamps**

USPS Stamp Fulfillment Services
8300 NE Underground Drive, Suite 300
Kansas City, MO 64144-9900

September 5, 2026

Black and White Pictorial**FDOI – Bald Eagle: Hatchling to Adult Stamps**

USPS Stamp Fulfillment Services
8300 NE Underground Drive, Suite 300
Kansas City, MO 64144-9900

September 14, 2026

Digital Color Pictorial**FDOI – Bald Eagle: Hatchling to Adult Stamps**

USPS Stamp Fulfillment Services
8300 NE Underground Drive, Suite 300
Kansas City, MO 64144-9900

September 14, 2026

Black and White Pictorial**FDOI – Treasures of the Revolutionary Era Prestige Booklet**

USPS Stamp Fulfillment Services
8300 NE Underground Drive, Suite 300
Kansas City, MO 64144-9900

September 23, 2026

Digital Color Pictorial**FDOI – Treasures of the Revolutionary Era Prestige Booklet**

USPS Stamp Fulfillment Services
8300 NE Underground Drive, Suite 300
Kansas City, MO 64144-9900

September 23, 2026

Black and White Pictorial**FDOI – American Bison Stamp**

USPS Stamp Fulfillment Services
8300 NE Underground Drive, Suite 300
Kansas City, MO 64144-9900

September 25, 2026

Digital Color Pictorial**FDOI – American Bison Stamp**

USPS Stamp Fulfillment Services
8300 NE Underground Drive, Suite 300
Kansas City, MO 64144-9900

September 25, 2026

Black and White Pictorial



Digital Color Pictorial

FDOI – Postcrossing Stamps

USPS Stamp Fulfillment Services
8300 NE Underground Drive, Suite 300
Kansas City, MO 64144-9900

September 26, 2026



Black and White Pictorial

FDOI – Postcrossing Stamps

USPS Stamp Fulfillment Services
8300 NE Underground Drive, Suite 300
Kansas City, MO 64144-9900

September 26, 2026



Digital Color Pictorial

FDOI – International Peace Stamp

USPS Stamp Fulfillment Services
8300 NE Underground Drive, Suite 300
Kansas City, MO 64144-9900

September 27, 2026



Black and White Pictorial

FDOI – International Peace Stamp

USPS Stamp Fulfillment Services
8300 NE Underground Drive, Suite 300
Kansas City, MO 64144-9900

September 27, 2026



Digital Color Pictorial

FDOI – North American Soccer Stamp

USPS Stamp Fulfillment Services
8300 NE Underground Drive, Suite 300
Kansas City, MO 64144-9900

September 28, 2026



Black and White Pictorial

FDOI – North American Soccer Stamp

USPS Stamp Fulfillment Services
8300 NE Underground Drive, Suite 300
Kansas City, MO 64144-9900

September 28, 2026



UNITED STATES
POSTAL SERVICE

475 L'ENFANT PLAZA SW
WASHINGTON DC 20260-5540

First-Class Mail
Postage & Fees Paid
USPS
Permit No. G-10

Add a touch of sunshine to your mail with the

Sunflowers

Forever® stamp



ON SALE MARCH 14, 2026

