

Postal Bulletin 2015 Annual Index

January–December 2015

PB 22406–22431

The following articles are updated regularly in the *Postal Bulletin* and are not listed in the index:

- Counterfeit Canadian Money Order Forms.
- Domestic Orders.
- Freely Associated States (FAS) Restrictions
- How to Order the First-Day-of-Issue Digital Color or Traditional Postmarks.
- Invalid USPS Corporate Account Numbers.
- Mail Alert.
- Missing Children Posters.
- Missing, Lost, or Stolen Canadian Money Order Forms.
- Missing, Lost, or Stolen U.S. Money Order Forms.
- Overseas Military/Diplomatic Mail.
- Pictorial Postmarks Announcement.
- Post Office Changes.
- Stamps by Mail — Brochure Ordering Information.
- Thrift Savings Plan Fact Sheet.
- Toll-Free Number Available to Verify Canadian Money Orders.
- Verifying U.S. Postal Service Money Orders.
- What's New on USPS.com?
- Withholding of Mail Orders.

- A -

ADMINISTRATIVE SUPPORT MANUAL

Audits and Investigations (<i>ASM Revision</i>)	22407 (01-22-15)
Audits and Investigations (<i>ASM Revision</i>)	22426 (10-15-15)
Audits and Investigations (<i>ASM Revision</i>)	22429 (11-26-15)
Community Contact (<i>ASM Revision</i>)	22430 (12-10-15)
Personnel Security Clearances (<i>ASM Revision</i>)	22408 (02-05-15)
Responsible Use of Social Media (<i>ASM Revision</i>)	22431 (12-24-15)
Sealed Mail (<i>ASM Revision</i>)	22428 (11-12-15)

- C -

CONSUMER/CUSTOMER RELATIONS

See also Publicity Kits.

2015 Mailing Promotions: Great Mailing Opportunities	22419 (07-09-15)
2015 Mailing Promotions Make Mail “Irresistible”	22417 (06-11-15)
Holiday Season 2015 (<i>Publicity Kit</i>)	22427 (10-29-15)
Honoring Heroes: Williams Searuggs, Letter Carrier	22417 (06-11-15)
Fire Prevention Week is October 4-10, 2015: Put Smoke Alarms in Your Home to Keep Your Family Safe	22425 (10-01-15)
Mailbox Improvement Week, May 17–23, 2015 (<i>Field Information Kit</i>)	22415 (05-14-15)
National Consumer Protection Week, March 1–7, 2015 (<i>Field Information Kit</i>)	22409 (02-19-15)
National Dog Bite Prevention Week, May 16–22, 2015 (<i>Field Information Kit</i>)	22414 (04-30-15)

- D -

DELIVERY

Clarification of Scans as Evidence of Mailing and the Placement of Collect on Delivery (COD) Forms (<i>DMM Revision</i>)	22421 (08-06-15)
Delivery Services (<i>POM Revision</i>)	22426 (10-15-15)
EAS Privately-Owned Vehicle Program	22417 (06-11-15)
Mailbox Improvement Week, May 17–23, 2015 (<i>Field Information Kit</i>)	22415 (05-14-15)
Notice to All Post Offices with Rural Delivery Service: Rural Carrier Guarantee Period	22425 (10-01-15)
Retirement of PS Form 3816-AS, Collect on Delivery (COD) Card–Firm Mailings (<i>DMM Revision</i>)	22431 (12-24-15)

DIRECTIVES

See also Administrative Support Manual, Domestic Mail Manual, Employee and Labor Relations Manual, Handbooks, International Mail Manual, Management Instructions, Posters, and Publications.

DIRECTIVES AND FORMS UPDATE

Directives and Forms Update (<i>Publication 223 Revision</i>)	22413 (04-16-15)
Directives and Forms Update (<i>Publication 223 Revision</i>)	22419 (07-09-15)
Directives and Forms Update (<i>Publication 223 Revision</i>)	22425 (10-01-15)
Directives and Forms Update (<i>Publication 223 Revision</i>)	22430 (12-10-15)

DIVERSITY

U.S. Postal Service Diversity and Inclusion Statement	22413 (04-16-15)
---	------------------

DOMESTIC MAIL

The Adherence of Seeds and Other Matter to Postage Stamps	22431 (12-24-15)
---	------------------

DOMESTIC MAIL MANUAL

See also Labeling Lists.

Business Reply Mail (<i>DMM Revision</i>)	22422 (08-20-15)
Clarification of Census Bureau Filing Regulations for U.S. Territories (<i>DMM Revision</i>)	22415 (05-14-15)
Clarification of Content Eligibility for Standard Mail Marketing Parcels (<i>DMM Revision</i>)	22412 (04-02-15)
Clarification of Postage Payment Information for Mail to Military Post Offices (<i>DMM Revision</i>)	22414 (04-30-15)
Clarification of Scans as Evidence of Mailing and the Placement of Collect on Delivery (COD) Forms (<i>DMM Revision</i>)	22421 (08-06-15)
Clarification on Content Eligibility for Marketing Parcels (<i>DMM Notice</i>)	22406 (01-08-15)
Click-N-Ship for Business Transitioning to a USPS Meter Label Solution (<i>DMM Revision</i>)	22414 (04-30-15)
Competitive Post Office Box Services (<i>DMM Revision</i>)	22428 (11-12-15)
Domestic Competitive Products Pricing and Mailing Standards Changes (<i>DMM Revision</i>)	22408 (02-05-15)
Domestic Competitive Products Pricing and Mailing Standards Changes (<i>DMM Revision</i>)	22430 (12-10-15)
First-Class Package Service Maximum Dimensions (<i>DMM Revision</i>)	22430 (12-10-15)
Freely Associated States Pricing (<i>DMM Clarification</i>)	22413 (04-16-15)
Letter Tray Preparation (<i>DMM Revision</i>)	22406 (01-08-15)
Mandatory Use of Customs Declaration PS Form 2976-B on APO/FPO/DPO Priority Mail Express (<i>DMM Revision</i>)	22418 (06-25-15)
Meter Provider Update (<i>DMM Revision</i>)	22428 (11-12-15)
Minimum Mailability Dimensions (<i>DMM Clarification</i>)	22415 (05-14-15)
New Flats Sequencing System (FSS) Sortation Level (<i>DMM Revision</i>)	22417 (06-11-15)
New Mailing Standards for Domestic Mailing Services Products (<i>DMM Revision</i>)	22415 (05-14-15)
New Standards for Domestic Certificates of Mailing (<i>DMM Revision</i>)	22431 (12-24-15)
No Handwritten Customs Forms May Be Submitted to a Business Mail Entry Unit (BMEU) (<i>DMM Revision</i>)	22428 (11-12-15)
Parcel Simplification (<i>DMM Revision</i>)	22431 (12-24-15)
Periodicals Marked Copy (<i>DMM Revision</i>)	22422 (08-20-15)
Pickup on Demand Service (<i>DMM Revision</i>)	22427 (10-29-15)
Postage Evidencing Systems — Legibility of Postage (<i>DMM Revision</i>)	22426 (10-15-15)
Postage Evidencing Systems — Revised Procedures for Collection of Postage Discrepancies (<i>DMM Revision</i>)	22420 (07-23-15)
Premium Forwarding Service Commercial (<i>DMM Revision</i>)	22413 (04-16-15)
Premium Forwarding Service Commercial (<i>DMM Revision</i>)	22422 (08-20-15)
Priority Mail Express (<i>DMM Revision</i>)	22429 (11-26-15)
Priority Mail Express Open and Distribute and Priority Mail Open and Distribute (<i>DMM Revision</i>)	22429 (11-26-15)
Products Mailable at Nonprofit Standard Mail Prices (<i>DMM Revision</i>)	22408 (02-05-15)
Products Mailable at Nonprofit Standard Mail Prices (<i>DMM Revision</i>)	22429 (11-26-15)
Provision for New First-Class Package Service Commercial Plus Customers (<i>DMM Revision</i>)	22415 (05-14-15)
Retirement of PS Form 3816-AS, Collect on Delivery (COD) Card—Firm Mailings (<i>DMM Revision</i>)	22431 (12-24-15)
Updated Addressing Standards for Military Addresses (<i>DMM Revision</i>)	22414 (04-30-15)
Updated Restrictions — Freely Associated States (FAS) (<i>DMM Revision</i>)	22413 (04-16-15)

DRINKING WATER

eBuy2 Yearly Purchases of 5-Gallon Bottled Drinking Water Services from Nestle and DS Waters for Fiscal Year 2016	22426 (10-15-15)
---	------------------

- E -**EMPLOYEE AND LABOR RELATIONS MANUAL**

Back Pay Limitations (<i>ELM Revision</i>)	22413 (04-16-15)
Behavior and Personal Habits (<i>ELM Revision</i>)	22421 (08-06-15)
Employee Relations (<i>ELM Revision</i>)	22424 (09-17-15)
Employee Relations (<i>ELM Revision</i>)	22425 (10-01-15)
Employment and Placement (<i>ELM Revision</i>)	22413 (04-16-15)
FERS Further Revised Annuity Employee (<i>ELM Revision</i>)	22411 (03-19-15)
FERS Revised Annuity Employees (RAE) (<i>ELM Revision</i>)	22411 (03-19-15)
Flag Recognition Benefit (<i>ELM Revision</i>)	22429 (11-26-15)
Leave Accrual Changes for Certain Postmasters and EAS Employees (<i>ELM Revision</i>)	22417 (06-11-15)
Postmaster Relief Conversions to Career (<i>ELM Revision</i>)	22431 (12-24-15)
Recognition and Awards (<i>ELM Revision</i>)	22412 (04-02-15)
Safety and Health (<i>ELM Revision</i>)	22407 (01-22-15)
Safety, Health, and Environment (<i>ELM Revision</i>)	22415 (05-14-15)
Severance Pay (<i>ELM Revision</i>)	22425 (10-01-15)

EMPLOYEES

See also Employee and Labor Relations Manual, Safety and Health, and Voice of the Employee.

General

2016 Pay Dates and Leave Year	22429 (11-26-15)
2016 Social Security and Medicare Tax Withholding Rates and Limits	22429 (11-26-15)
Back Pay Limitations (<i>ELM Revision</i>)	22413 (04-16-15)
Christmas Pay Procedures for Rural Carriers	22427 (10-29-15)
Equal Employment Opportunity Policy Statement	22411 (03-19-15)
Federal Income Tax Withholding	22431 (12-24-15)
Federal Taxation Percentages for Supplemental Wages	22431 (12-24-15)
FERS Further Revised Annuity Employee (<i>ELM Revision</i>)	22411 (03-19-15)
FERS Revised Annuity Employees (RAE) (<i>ELM Revision</i>)	22411 (03-19-15)
Form W-2, Wage and Tax Statement — Changing Your Current Mailing Address	22428 (11-12-15)
Form W-4 Completion for Employees Claiming Exempt Status for 2015	22406 (01-08-15)
IRS Reporting Requirements of Attorney Fees, Back Pay, or Wages	22428 (11-12-15)
Leave Accrual Changes for Certain Postmasters and EAS Employees (<i>ELM Revision</i>)	22417 (06-11-15)
Local Tax Code Information	22428 (11-12-15)
Notice to All Post Offices with Rural Delivery Service: Rural Carrier Guarantee Period	22425 (10-01-15)
Open Season Is Coming — Here's What You Need to Know	22427 (10-29-15)
Penalty Overtime Exclusion	22426 (10-15-15)
Phased Retirement	22419 (07-09-15)
Postal Service Policy on Workplace Harassment	22411 (03-19-15)
Postmaster Relief Conversions to Career (<i>ELM Revision</i>)	22431 (12-24-15)
Recognition and Awards (<i>ELM Revision</i>)	22412 (04-02-15)
Self Plus One — FEHB New Enrollment Type Offered to Employees in 2015	22429 (11-26-15)
Severance Pay (<i>ELM Revision</i>)	22425 (10-01-15)
Understanding FERS-RAE and FERS-FRAE	22423 (09-03-15)
U.S. Postal Service Diversity and Inclusion Statement	22413 (04-16-15)
Wage Overpayment Indebtedness — Tax Treatment	22428 (11-12-15)

ENERGY ACTION MONTH

Energy Action Month 2015 — Actions Speak Louder than Words	22424 (09-17-15)
--	------------------

ENVIRONMENT

See Sustainability.

EQUIPMENT MAINTENANCE ALLOWANCE SCHEDULE

Equipment Maintenance Allowance Schedule for Rural Routes	22406 (01-08-15)
Equipment Maintenance Allowance Schedule for Rural Routes	22413 (04-16-15)
Equipment Maintenance Allowance Schedule for Rural Routes	22419 (07-09-15)
Equipment Maintenance Allowance Schedule for Rural Routes	22425 (10-01-15)

ETHICS AND COMPLIANCE OFFICE

Your Smart Business Moments Initiative	22427 (10-29-15)
--	------------------

- F -**FIELD INFORMATION KITS**

2015 Open Season Kit (<i>Field Information Kit</i>)	22428 (11-12-15)
Fire Prevention Week is October 4-10, 2015: Put Smoke Alarms in Your Home to Keep Your Family Safe	22425 (10-01-15)
Mailbox Improvement Week, May 17–23, 2015 (<i>Field Information Kit</i>)	22415 (05-14-15)
National Consumer Protection Week, March 1–7, 2015 (<i>Field Information Kit</i>)	22409 (02-19-15)
National Dog Bite Prevention Week, May 16–22, 2015 (<i>Field Information Kit</i>)	22414 (04-30-15)

FINANCE**See also Equipment Maintenance Allowance Schedule, Forms, Handbooks, International Reply Coupons, and Pay Dates and Leave Year.**

2016 Pay Dates and Leave Year	22429 (11-26-15)
2016 Social Security and Medicare Tax Withholding Rates and Limits	22429 (11-26-15)
2014 Tax Information: Form W-2 Wage and Tax Statement; Form 1099	22406 (01-08-15)
Change in Procedure for Stamp Orders to RMPO Offices	22407 (01-22-15)
Christmas Pay Procedures for Rural Carriers	22427 (10-29-15)
Discontinuance of VAR Refunds at the Retail Window	22408 (02-05-15)
Federal Income Tax Withholding	22431 (12-24-15)
Federal Taxation Percentages for Supplemental Wages	22431 (12-24-15)
Finance Number Control Master (FNCM) Request Freeze	22424 (09-17-15)
Fiscal Year 2015 Closing Guidance: Message from the Controller	22420 (07-23-15)
Forever Items Stock Revaluation Instructions	22416 (05-28-15)
Forever Stamps Price Change Instructions for Stamps by Mail Orders	22416 (05-28-15)
Form W-2, Wage and Tax Statement — Changing Your Current Mailing Address	22428 (11-12-15)
Form W-4 Completion for Employees Claiming Exempt Status for 2015	22406 (01-08-15)
IRS Reporting Requirements of Attorney Fees, Back Pay, or Wages	22428 (11-12-15)
Local Tax Code Information	22428 (11-12-15)
Penalty Overtime Exclusion	22426 (10-15-15)
Procedures for Handling Unsold Migratory Bird (Duck) Stamps	22420 (07-23-15)
Reminder: International Reply Coupons (Return Dates: February 1–28, 2015)	22408 (02-05-15)
Reminder: International Reply Coupons (Return Dates: January 1–31, 2016)	22430 (12-10-15)
Stamp Fulfillment Services Facility Audit Information	22419 (07-09-15)
Wage Overpayment Indebtedness — Tax Treatment	22428 (11-12-15)

FIRE PREVENTION WEEK

Fire Prevention Week is October 4-10, 2015: Put Smoke Alarms in Your Home to Keep Your Family Safe	22425 (10-01-15)
Smoke Detector Disposal	22426 (10-15-15)

FLAG DISPLAY

Displaying the U.S. Flag and the POW-MIA Flag	22418 (06-25-15)
Displaying the U.S. Flag and the POW-MIA Flag	22425 (10-01-15)
Flag Recognition Benefit (<i>ELM Revision</i>)	22429 (11-26-15)
Regulations for Proper Flag Display	22418 (06-25-15)
Regulations for Proper Flag Display	22425 (10-01-15)

FORMS

Mandatory Use of Customs Declaration PS Form 2976-B on APO/FPO/DPO Priority Mail Express (<i>DMM Revision</i>)	22418 (06-25-15)
Notice: Updated Extra Service Forms Availability	22415 (05-14-15)
PS Form 61 Revision: Appointment Affidavit	22418 (06-25-15)
PS Form 3811, Domestic Return Receipt — July 2015 Updates	22427 (10-29-15)
PS Form 3972 Revision: Leave Absence Analysis	22431 (12-24-15)
Retirement of PS Form 3816-AS, Collect on Delivery (COD) Card–Firm Mailings (<i>DMM Revision</i>)	22431 (12-24-15)

FREE MAIL

Free Mail Program for U.S. Armed Forces	22417 (06-11-15)
---	------------------

- H -**HANDBOOKS**

Handbook EL-921 is Now Available	22421 (08-06-15)
Revised Handbook AS-353, Address Change, Mail Forwarding, and Related Services	22428 (11-12-15)

Revised Handbook AS-353, Customer Registration	22430 (12-10-15)
Revised Handbook AS-353, International Services	22409 (02-19-15)
Revised Handbook AS-353, Revenue Assurance System	22426 (10-15-15)
Revised Handbook EL-312, Assignment, Reassignment, and Placement	22409 (02-19-15)
Revised Handbook EL-312, Assignment, Reassignment, and Promotion	22412 (04-02-15)
Revised Handbook EL-312, Assignment, Reassignment, and Promotion	22420 (07-23-15)
Revised Handbook EL-312, Employment Eligibility and Suitability	22422 (08-20-15)
Revised Handbook EL-312, External Vacancy Announcements and Veterans' Preference Claims	22429 (11-26-15)
Revised Handbook EL-312, Recruitment	22410 (03-05-15)
Revised Handbook EL-312, Recruitment	22428 (11-12-15)
Revised Handbook EL-312, Suitability	22413 (04-16-15)
Revised Handbook EL-312, Vacancy Announcements and Veterans' Preference Claims	22408 (02-05-15)
Revised Handbook EL-505, Rehabilitation Program	22407 (01-22-15)
Revised Handbook F-1, Accounting Policy	22407 (01-22-15)
Revised Handbook F-15, Approving Officials	22423 (09-03-15)
Revised Handbook F-23, Accounting Policy	22407 (01-22-15)
Revised Handbook F-101, Non-PO 6-Hour Remotely Managed Post Offices	22422 (08-20-15)
Revised Handbook M-41, Carrier Duties	22429 (11-26-15)
Revised Handbook M-41, On Route	22417 (06-11-15)
Revised Handbook PO-603, Delivery Point Sequencing (DPS) Flats	22419 (07-09-15)
Revised Handbook RE-1, Acquisition of Real Property and Real Estate Services	22426 (10-15-15)
Revised Handbook RE-6, Facilities Environmental Guide	22425 (10-01-15)

HEROES

Honoring Heroes: Williams Searuggs, Letter Carrier	22417 (06-11-15)
--	------------------

HOLIDAY SEASON KIT

Holiday Season 2015 (<i>Publicity Kit</i>)	22427 (10-29-15)
--	------------------

HUMAN RESOURCES

See *Employees*.

- I -

INFORMATION SECURITY

Cyber Intrusion Update: Employees Encouraged to Use Credit-monitoring Service	22406 (01-08-15)
CyberSafe at USPS Presents National Cyber Security Awareness Month to Spotlight the Importance of Information Security	22426 (10-15-15)
Don't Take the Bait: Best Practices to Avoid Phishing Schemes and Keep Email Safe	22429 (11-26-15)
Holiday Phishing: Online Criminals Using Email Scams	22407 (01-22-15)
Protect Yourself: Don't Get Hooked by Phishing Scams	22408 (02-05-15)
This Season of Giving, Give Yourself the Gift of Information Security	22430 (12-10-15)

INFORMATION TECHNOLOGY

Cyber Intrusion Update: Employees Encouraged to Use Credit-monitoring Service	22406 (01-08-15)
---	------------------

INTERNATIONAL MAIL

Temporary Suspension of Mail Service to Yemen	22421 (08-06-15)
---	------------------

INTERNATIONAL MAIL MANUAL

Adding Bonaire, Sint Eustatius, and Saba as a Separate Country Listing (<i>IMM Revision</i>)	22430 (12-10-15)
Burma (Myanmar), Kiribati, and Sao Tome and Principe Establish Priority Mail Express International Service (<i>IMM Revision</i>)	22408 (02-05-15)
Certificate of Mailing Service Available for Priority Mail International Service (<i>IMM Revision</i>)	22431 (12-24-15)
Changes to Pricing and Mailing Standards for International Shipping Services (<i>IMM Revision</i>)	22408 (02-05-15)
Changes to Pricing and Mailing Standards for International Shipping Services (<i>IMM Revision</i>)	22430 (12-10-15)
Country Listings Name Changes (<i>IMM Revision</i>)	22408 (02-05-15)
Editorial Corrections (<i>IMM Revision</i>)	22427 (10-29-15)
Foreign Office of Exchange Code for IPA and ISAL Service to Brazil (<i>IMM Revision</i>)	22424 (09-17-15)
Foreign Office of Exchange Code for IPA Service to Malawi (<i>IMM Revision</i>)	22414 (04-30-15)
Global Direct Entry Wholesaler Program (<i>IMM Revision</i>)	22409 (02-19-15)
Global Shipping Software (GSS) Update (<i>IMM Revision</i>)	22428 (11-12-15)
Indemnity Limits for International Registered Mail Service (<i>IMM Revision</i>)	22428 (11-12-15)

Individual Country Listing for Hong Kong (<i>IMM Revision</i>)	22428 (11-12-15)
International Merchandise Insurance Limits for Three Countries (<i>IMM Revision</i>)	22409 (02-19-15)
International Reply Coupons (<i>IMM Revision</i>)	22428 (11-12-15)
Lithium Battery Terminology (<i>IMM Revision</i>)	22410 (03-05-15)
Modified Implementation Date for International Price Change (<i>IMM Revision</i>)	22414 (04-30-15)
Preparation Requirements for Priority Mail Express International Shipments (<i>IMM Revision</i>)	22418 (06-25-15)
Priority Mail International Insurance to Bahamas (<i>IMM Revision</i>)	22421 (08-06-15)
Replacing Click-N-Ship for Business with a USPS Meter Label Solution (<i>IMM Revision</i>)	22413 (04-16-15)
U.S. Government Sanctions on Crimea Region of Ukraine (<i>IMM Revision</i>)	22411 (03-19-15)
U.S. Government Sanctions Programs (<i>IMM Revision</i>)	22411 (03-19-15)

INTERNATIONAL REGISTERED MAIL

Indemnity Limits for International Registered Mail Service (<i>IMM Revision</i>)	22428 (11-12-15)
Tracking Suppression of Import Registered Mail	22424 (09-17-15)

INTERNATIONAL REPLY COUPONS

International Reply Coupons (<i>IMM Revision</i>)	22428 (11-12-15)
Reminder: International Reply Coupons (Return Dates: February 1–28, 2015)	22408 (02-05-15)
Reminder: International Reply Coupons (Return Dates: January 1–31, 2016)	22430 (12-10-15)

- L -

LABELING LISTS

Correction: Labeling List Changes for July	22420 (07-23-15)
Correction: Labeling List Update for 9/1 Effective Lists (Published on 8/7)	22422 (08-20-15)
Labeling List Changes	22406 (01-08-15)
Labeling List Changes	22408 (02-05-15)
Labeling List Changes	22410 (03-05-15)
Labeling List Changes	22411 (03-19-15)
Labeling List Changes	22414 (04-30-15)
Labeling List Changes	22415 (05-14-15)
Labeling List Changes	22418 (06-25-15)
Labeling List Changes	22419 (07-09-15)
Labeling List Changes	22421 (08-06-15)
Labeling List Changes	22426 (10-15-15)
Labeling List Changes	22428 (11-12-15)
Labeling List Changes	22431 (12-24-15)

LETTERS

Poster 159, Workplace Harassment: Know Your Rights! Take Responsibility! — Cover Letter	22416 (05-28-15)
---	------------------

- M -

MAILBOX IMPROVEMENT WEEK

Mailbox Improvement Week, May 17–23, 2015 (<i>Field Information Kit</i>)	22415 (05-14-15)
--	------------------

MAIL TRANSPORT EQUIPMENT

Mail Transport Equipment: Help Save Time and Money	22410 (03-05-15)
--	------------------

MAILING AND SHIPPING

See also Domestic Mail Manual, International Mail Manual, Labeling Lists, and Mover's Guide.

2015 Postal Explorer CDs Available to Post Offices without Internet Connection	22421 (08-06-15)
Business Reply Mail (<i>DMM Revision</i>)	22422 (08-20-15)
Clarification of Content Eligibility for Standard Mail Marketing Parcels (<i>DMM Revision</i>)	22412 (04-02-15)
Clarification of Scans as Evidence of Mailing and the Placement of Collect on Delivery (COD) Forms (<i>DMM Revision</i>)	22421 (08-06-15)
First-Class Package Service Maximum Dimensions (<i>DMM Revision</i>)	22430 (12-10-15)
Global Shipping Software (GSS) Update (<i>IMM Revision</i>)	22428 (11-12-15)
International Updates: National Recertification for Mailers Privately Printing Customs Declaration Forms	22417 (06-11-15)
Minimum Mailability Dimensions (<i>DMM Clarification</i>)	22415 (05-14-15)
New Mailing Standards for Domestic Mailing Services Products (<i>DMM Revision</i>)	22415 (05-14-15)
New Standards for Domestic Certificates of Mailing (<i>DMM Revision</i>)	22431 (12-24-15)
Non-IMI/IBI Indicia Will be Discontinued	22430 (12-10-15)

Postage Evidencing Systems — Legibility of Postage (<i>DMM Revision</i>)	22426 (10-15-15)
Products Mailable at Nonprofit Standard Mail Prices (<i>DMM Revision</i>)	22408 (02-05-15)
Products Mailable at Nonprofit Standard Mail Prices (<i>DMM Revision</i>)	22429 (11-26-15)
Premium Forwarding Service Residential: Make Sure Your Mail Goes with You.	22407 (01-22-15)
Replacing Click-N-Ship for Business with a USPS Meter Label Solution (<i>IMM Revision</i>)	22413 (04-16-15)
'Tis the Season for Returns	22431 (12-24-15)
USPS Package Intercept Scores Touchdown with Customers	22419 (07-09-15)

MARKETING

2015 Mailing Promotions: Great Mailing Opportunities.	22419 (07-09-15)
2015 Mailing Promotions Make Mail “Irresistible”	22417 (06-11-15)

MILITARY MAIL

Clarification of Postage Payment Information for Mail to Military Post Offices (<i>DMM Revision</i>).	22414 (04-30-15)
Free Mail Program for U.S. Armed Forces.	22417 (06-11-15)
Mandatory Use of Customs Declaration PS Form 2976-B on APO/FPO/DPO Priority Mail Express (<i>DMM Revision</i>)	22418 (06-25-15)
Updated Addressing Standards for Military Addresses (<i>DMM Revision</i>)	22414 (04-30-15)

MOVER’S GUIDE

Publication 75, Mover’s Guide, News	22406 (01-08-15)
Publication 75, Mover’s Guide, News	22411 (03-19-15)
Publication 75, Mover’s Guide, News	22412 (04-02-15)
Publication 75, Mover’s Guide, News	22418 (06-25-15)
Publication 75, Mover’s Guide, News	22419 (07-09-15)

- N -

NATIONAL CONSUMER PROTECTION WEEK

National Consumer Protection Week, March 1–7, 2015 (<i>Field Information Kit</i>).	22409 (02-19-15)
--	------------------

NATIONAL CYBER SECURITY AWARENESS MONTH

CyberSafe at USPS Presents National Cyber Security Awareness Month to Spotlight the Importance of Information Security	22426 (10-15-15)
--	------------------

NATIONAL DOG BITE PREVENTION WEEK

National Dog Bite Prevention Week, May 16–22, 2015 (<i>Field Information Kit</i>)	22414 (04-30-15)
---	------------------

NEW PRODUCTS AND INNOVATIONS

2015 Mailing Promotions: Great Mailing Opportunities.	22419 (07-09-15)
2015 Mailing Promotions Make Mail “Irresistible”	22417 (06-11-15)

NOTICES

Notice: Clarification of New Flats Sequencing System (FSS) Column Header Abbreviation	22418 (06-25-15)
Notice: Updated Extra Service Forms Availability	22415 (05-14-15)

- O -

OPEN SEASON 2015

2015 Open Season Kit (<i>Field Information Kit</i>)	22428 (11-12-15)
Annual Leave Exchange Option Poster	22428 (11-12-15)
Federal Employees Health Benefits Open Season Poster.	22428 (11-12-15)
Flexible Spending Account Poster	22428 (11-12-15)
Flexible Spending Accounts 2015 Open Season: November 9–December 14, 2015.	22428 (11-12-15)
Open Season Is Coming — Here’s What You Need to Know	22427 (10-29-15)
Self Plus One — FEHB New Enrollment Type Offered to Employees in 2015.	22429 (11-26-15)

- P -**PASSPORTS**

A U.S. Passport is Your Key to International Travel	22406 (01-08-15)
A U.S. Passport is Your Key to International Travel	22413 (04-16-15)
A U.S. Passport is Your Key to International Travel	22421 (08-06-15)

PAYMENT TECHNOLOGY

Non-IMI/IBI Indicia Will be Discontinued	22430 (12-10-15)
--	------------------

PERSONNEL

See Employees.

PHILATELY**General**

2015 Philatelic Products Make Great Holiday Gifts	22429 (11-26-15)
2015 Stamp Yearbook and The Postal Service Guide to U.S. Stamps — 42nd Edition	22426 (10-15-15)
A Charlie Brown Christmas Stamps (<i>Publicity Kit</i>)	22425 (10-01-15)
Correction: Cherry Blossom (Item 468200) Remains on Sale at SFS	22413 (04-16-15)
Correction: Ferns Stamp Coils	22417 (06-11-15)
Correction: How to Order the First-Day-of-Issue Digital Color or Traditional Postmarks	22423 (09-03-15)
Correction: Item 222100, 228100, 228400 Fanciful Flower Stamped Cards	22419 (07-09-15)
Correction: Item 473200 United States Coast Guard Stamp	22420 (07-23-15)
Correction: Item 589015 Elvis Presley Stamp	22420 (07-23-15)
Correction: Item 789600, \$49.00 Flag for All Seasons Coil/100 Stamps	22413 (04-16-15)
Correction: Letters from Santa — North Pole Postmarks	22429 (11-26-15)
Correction: Paul Newman Stamp	22425 (10-01-15)
Correction: Philatelic Products for Gifts of Friendship Stamps	22413 (04-16-15)
Correction: Pictorial Postmarks	22421 (08-06-15)
Correction: Pictorial Postmarks	22426 (10-15-15)
Correction: Pictorial Postmarks	22428 (11-12-15)
Correction: Spectrum Eagle Reissue	22423 (09-03-15)
Correction: Stamp Announcement 15-30: Summer Harvest Stamps	22418 (06-25-15)
Correction: Stamp Stock Items Withdrawn From Regular Sale and From Sale at Philatelic Centers	22417 (06-11-15)
Correction: Stamp Stock Items Withdrawn From Regular Sale and From Sale at Philatelic Centers	22418 (06-25-15)
Forever Items Stock Revaluation Instructions	22416 (05-28-15)
Forever Stamps Price Change Instructions for Stamps by Mail Orders	22416 (05-28-15)
Procedures for Handling Unsold Migratory Bird (Duck) Stamps	22420 (07-23-15)
Showcasing America's Calling Cards	22408 (02-05-15)
Special Olympics World Games Stamp (<i>Publicity Kit</i>)	22420 (07-23-15)
Stamp Fulfillment Services Facility Audit Information	22419 (07-09-15)
United States Coast Guard Stamp (<i>Publicity Kit</i>)	22420 (07-23-15)
USPS Adds One of the Greatest to the Music Icons Series: Elvis Presley	22423 (09-03-15)

New Issues

A Charlie Brown Christmas (<i>Stamp Announcement 15-39</i>)	22423 (09-03-15)
Bobcat Stamp (<i>Stamp Announcement 15-6</i>)	22406 (01-08-15)
Civil War: 1865 (<i>Stamp Announcement 15-14</i>)	22410 (03-05-15)
Coastal Birds (<i>Stamp Announcement 15-22</i>)	22416 (05-28-15)
Eastern Tiger Swallowtail (Butterfly) (<i>Stamp Announcement 15-27</i>)	22416 (05-28-15)
Elvis Presley (<i>Stamp Announcement 15-33</i>)	22419 (07-09-15)
Fanciful Flowers Stamped Card (<i>Stamp Announcement 15-31</i>)	22418 (06-25-15)
Ferns (<i>Stamp Announcement 15-15</i>)	22410 (03-05-15)
Flannery O'Connor (<i>Stamp Announcement 15-28</i>)	22416 (05-28-15)
From Me to You (<i>Stamp Announcement 15-13</i>)	22410 (03-05-15)
Geometric Snowflakes (<i>Stamp Announcement 15-40</i>)	22424 (09-17-15)
Gifts of Friendship (<i>Stamp Announcement 15-17</i>)	22411 (03-19-15)
Ingrid Bergman (<i>Stamp Announcement 15-34</i>)	22420 (07-23-15)
Martin Ramirez (<i>Stamp Announcement 15-12</i>)	22409 (02-19-15)
Maya Angelou (<i>Stamp Announcement 15-16</i>)	22411 (03-19-15)
Medal of Honor: Vietnam War (<i>Stamp Announcement 15-21</i>)	22413 (04-16-15)

Migratory Bird Hunting and Conservation (<i>Stamp Announcement 15-29</i>)	22416 (05-28-15)
Missing Children (<i>Stamp Announcement 15-20</i>)	22413 (04-16-15)
Neon Celebrate! (<i>Stamp Announcement 15-38</i>)	22423 (09-03-15)
Paul Newman (<i>Stamp Announcement 15-36</i>)	22422 (08-20-15)
Penguins (<i>Stamp Announcement 15-23</i>)	22416 (05-28-15)
Quilled Paper Heart (<i>Stamp Announcement 15-41</i>)	22430 (12-10-15)
Robert Robinson Taylor Stamp (<i>Stamp Announcement 15-7</i>)	22407 (01-22-15)
Special Olympics World Games (<i>Stamp Announcement 15-18</i>)	22412 (04-02-15)
Spectrum Eagle (<i>Stamp Announcement 15-37</i>)	22422 (08-20-15)
Stars and Stripes (Presorted Standard) Stamps (<i>Stamp Announcement 15-10</i>)	22407 (01-22-15)
Summer Harvest (<i>Stamp Announcement 15-30</i>)	22417 (06-11-15)
United States Coast Guard (<i>Stamp Announcement 15-32</i>)	22419 (07-09-15)
Vintage Rose (<i>Stamp Announcement 15-8</i>)	22407 (01-22-15)
Vintage Tulip (<i>Stamp Announcement 15-9</i>)	22407 (01-22-15)
Vintage Tulip (<i>Stamp Announcement 15-26</i>)	22416 (05-28-15)
Water Lilies (<i>Stamp Announcement 15-11</i>)	22409 (02-19-15)
Water Lilies/Missing Children Stamped Envelopes (<i>Stamp Announcement 15-19</i>)	22412 (04-02-15)
Wedding Cake (<i>Stamp Announcement 15-24</i>)	22416 (05-28-15)
World Stamp Show—NY 2016 (<i>Stamp Announcement 15-35</i>)	22420 (07-23-15)
Yes, I Do (<i>Stamp Announcement 15-25</i>)	22416 (05-28-15)

Postmarks

Correction: How to Order the First-Day-of-Issue Digital Color or Traditional Postmarks	22423 (09-03-15)
Correction: Letters from Santa — North Pole Postmarks	22429 (11-26-15)
Correction: Pictorial Postmarks	22421 (08-06-15)
Correction: Pictorial Postmarks	22426 (10-15-15)
Correction: Pictorial Postmarks	22428 (11-12-15)
Postmark America	22414 (04-30-15)

Remaining on Sale, Removed From Sale, and Approved for Sale

Stamp Stock Items Withdrawn From Regular Sale and From Sale at Philatelic Centers	22410 (03-05-15)
Stamp Stock Items Withdrawn From Regular Sale and From Sale at Philatelic Centers	22416 (05-28-15)
Stamp Stock Items Withdrawn From Regular Sale and From Sale at Philatelic Centers	22423 (09-03-15)
Stamp Stock Items Withdrawn From Regular Sale and From Sale at Philatelic Centers	22430 (12-10-15)

Stamps and Postal Stationery

2015 Stamps and Postal Stationery	22406 (01-08-15)
2015 Stamps and Postal Stationery	22412 (04-02-15)
2015 Stamps and Postal Stationery	22416 (05-28-15)
2015 Stamps and Postal Stationery	22417 (06-11-15)
2015 Stamps and Postal Stationery	22419 (07-09-15)
2015 Stamps and Postal Stationery	22423 (09-03-15)

PO BOXES

Competitive Fees for PO Boxes	22417 (06-11-15)
Competitive Fees for PO Boxes	22430 (12-10-15)
Competitive Post Office Box Services (<i>DMM Revision</i>)	22428 (11-12-15)

POSTAL OPERATIONS MANUAL

Collection Service — National Service Standards (<i>POM Revision</i>)	22429 (11-26-15)
Collection Service — National Service Standards (<i>POM Revision</i>)	22431 (12-24-15)
Dead Mail (<i>POM Revision</i>)	22428 (11-12-15)
Delivery Services (<i>POM Revision</i>)	22426 (10-15-15)

POSTERS

See also POW-MIA Flags.

Annual Leave Exchange Option Poster	22428 (11-12-15)
Federal Employees Health Benefits Open Season Poster	22428 (11-12-15)
Flexible Spending Account Poster	22428 (11-12-15)
Food Drive Poster	22413 (04-16-15)
Food Drive Poster	22414 (04-30-15)
NOTICE TO EMPLOYEES — CSRS Poster	22414 (04-30-15)
NOTICE TO EMPLOYEES — FERS Poster	22414 (04-30-15)

Poster 159, Workplace Harassment: Know Your Rights! Take Responsibility!	22416 (05-28-15)
Revised Poster: Poster 159, Workplace Harassment: Know Your Rights! Take Responsibility!	22416 (05-28-15)

POSTMASTER GENERAL

Message From Your Postmaster General	22428 (11-12-15)
Your Smart Business Moments Initiative	22427 (10-29-15)

PRICING

Competitive Fees for PO Boxes	22417 (06-11-15)
Competitive Fees for PO Boxes	22430 (12-10-15)
Changes to Pricing and Mailing Standards for International Shipping Services (<i>IMM Revision</i>)	22408 (02-05-15)
Domestic Competitive Products Pricing and Mailing Standards Changes (<i>DMM Revision</i>)	22408 (02-05-15)
Freely Associated States Pricing (<i>DMM Clarification</i>)	22413 (04-16-15)
Metered Mail Price at Retail	22416 (05-28-15)
Modified Implementation Date for International Price Change (<i>IMM Revision</i>)	22414 (04-30-15)
Non-IMI/IBI Indicia Will be Discontinued	22430 (12-10-15)
Notice: Clarification of New Flats Sequencing System (FSS) Column Header Abbreviation	22418 (06-25-15)
Products Mailable at Nonprofit Standard Mail Prices (<i>DMM Revision</i>)	22408 (02-05-15)
Reminder: IMpb Compliance Thresholds	22407 (01-22-15)
Temporary Suspension of Product Classification Poster and CD	22427 (10-29-15)

PROCESSING

Lean Mail Processing Eliminates Waste	22411 (03-19-15)
---	------------------

PROMOTIONS

2015 Mailing Promotions: Great Mailing Opportunities	22419 (07-09-15)
2015 Mailing Promotions Make Mail "Irresistible"	22417 (06-11-15)

PUBLICATIONS**See also Directives and Forms Update and Mover's Guide.**

Changes to Post Office Box Service and Caller Service Fee Groups (<i>Publication 431 Revision</i>)	22408 (02-05-15)
Changes to Post Office Box Service and Caller Service Fee Groups (<i>Publication 431 Revision</i>)	22409 (02-19-15)
Changes to Post Office Box Service and Caller Service Fee Groups (<i>Publication 431 Revision</i>)	22410 (03-05-15)
Changes to Post Office Box Service and Caller Service Fee Groups (<i>Publication 431 Revision</i>)	22411 (03-19-15)
Changes to Post Office Box Service and Caller Service Fee Groups (<i>Publication 431 Revision</i>)	22412 (04-02-15)
Changes to Post Office Box Service and Caller Service Fee Groups (<i>Publication 431 Revision</i>)	22414 (04-30-15)
Changes to Post Office Box Service and Caller Service Fee Groups (<i>Publication 431 Revision</i>)	22415 (05-14-15)
Changes to Post Office Box Service and Caller Service Fee Groups (<i>Publication 431 Revision</i>)	22416 (05-28-15)
Changes to Post Office Box Service and Caller Service Fee Groups (<i>Publication 431 Revision</i>)	22417 (06-11-15)
Changes to Post Office Box Service and Caller Service Fee Groups (<i>Publication 431 Revision</i>)	22418 (06-25-15)
Changes to Post Office Box Service and Caller Service Fee Groups (<i>Publication 431 Revision</i>)	22419 (07-09-15)
Changes to Post Office Box Service and Caller Service Fee Groups (<i>Publication 431 Revision</i>)	22420 (07-23-15)
Changes to Post Office Box Service and Caller Service Fee Groups (<i>Publication 431 Revision</i>)	22421 (08-06-15)
Changes to Post Office Box Service and Caller Service Fee Groups (<i>Publication 431 Revision</i>)	22422 (08-20-15)
Changes to Post Office Box Service and Caller Service Fee Groups (<i>Publication 431 Revision</i>)	22423 (09-03-15)
Changes to Post Office Box Service and Caller Service Fee Groups (<i>Publication 431 Revision</i>)	22424 (09-17-15)
Changes to Post Office Box Service and Caller Service Fee Groups (<i>Publication 431 Revision</i>)	22425 (10-01-15)
Changes to Post Office Box Service and Caller Service Fee Groups (<i>Publication 431 Revision</i>)	22427 (10-29-15)
Changes to Post Office Box Service and Caller Service Fee Groups (<i>Publication 431 Revision</i>)	22428 (11-12-15)
Changes to Post Office Box Service and Caller Service Fee Groups (<i>Publication 431 Revision</i>)	22429 (11-26-15)
Changes to Post Office Box Service and Caller Service Fee Groups (<i>Publication 431 Revision</i>)	22431 (12-24-15)
Disposal of Controlled Substances (<i>Publication 52 Revision</i>)	22430 (12-10-15)
Elimination of PS Form 1770, Revisions to SP9275, and Updates to Various Standards (<i>Publication 52 Revision</i>)	22409 (02-19-15)
New Mailing Standards for Lithium Batteries (<i>Publication 52 Revision</i>)	22408 (02-05-15)
Threat Assessment (<i>Publication 108 Revision</i>)	22416 (05-28-15)

PUBLICITY KITS

A Charlie Brown Christmas Stamps (<i>Publicity Kit</i>)	22425 (10-01-15)
Holiday Season 2015 (<i>Publicity Kit</i>)	22427 (10-29-15)
National Dog Bite Prevention Week, May 16–22, 2015 (<i>Publicity Kit</i>)	22414 (04-30-15)
Special Olympics World Games Stamp (<i>Publicity Kit</i>)	22420 (07-23-15)
United States Coast Guard Stamp (<i>Publicity Kit</i>)	22420 (07-23-15)

- R -**RETAIL**

Competitive Fees for PO Boxes	22417 (06-11-15)
Competitive Fees for PO Boxes	22430 (12-10-15)
Metered Mail Price at Retail	22416 (05-28-15)

RETURNS

Parcel Return Service (PRS) Expansion	22423 (09-03-15)
'Tis the Season for Returns	22431 (12-24-15)

RURAL DELIVERY

Christmas Pay Procedures for Rural Carriers	22427 (10-29-15)
Notice to All Post Offices with Rural Delivery Service: Rural Carrier Guarantee Period	22425 (10-01-15)

- S -**SAFETY AND HEALTH**

Beat the Heat, Stay Cool	22416 (05-28-15)
Beat the Heat, Stay Cool	22420 (07-23-15)
December is USPS Motor Vehicle Safety Month	22430 (12-10-15)
Fire Prevention Week is October 4-10, 2015: Put Smoke Alarms in Your Home to Keep Your Family Safe	22425 (10-01-15)
National Dog Bite Prevention Week, May 16–22, 2015 (<i>Publicity Kit</i>)	22414 (04-30-15)
Safety and Health (<i>ELM Revision</i>)	22407 (01-22-15)
Safety, Health, and Environment (<i>ELM Revision</i>)	22415 (05-14-15)
School is Back in Session — Watch Out for the Kids	22422 (08-20-15)
Smoke Detector Disposal	22426 (10-15-15)
Statutory Requirement to Review and Post OSHA Form 300A Summary for Calendar Year 2014	22407 (01-22-15)

SFS AUDIT

Stamp Fulfillment Services Facility Audit Information	22419 (07-09-15)
---	------------------

SOCIAL MEDIA

Responsible Use of Social Media (<i>ASM Revision</i>)	22431 (12-24-15)
---	------------------

STAMPS

See *Philately*.

SUPPLY MANAGEMENT

eBuy2 Yearly Purchases of 5-Gallon Bottled Drinking Water Services from Nestle and DS Waters for Fiscal Year 2016	22426 (10-15-15)
Excess Casing Equipment Redistribution	22425 (10-01-15)
Interest Rate on Contract Claims	22406 (01-08-15)
Interest Rate on Contract Claims	22419 (07-09-15)
Recycling of Empty Toner and Inkjet Cartridges	22411 (03-19-15)
Recycling of Empty Toner and Inkjet Cartridges	22420 (07-23-15)
Use eBuy2 for All Your Supply Needs	22410 (03-05-15)
USPS Headquarters Managers and Field Installation Heads: February 2015 Semi-Annual Capital Property Review	22407 (01-22-15)
USPS Headquarters Managers and Field Installation Heads: August 2015 Semi-Annual Capital Property Review	22420 (07-23-15)
USPS Lock and Key Return Program	22422 (08-20-15)

SUSTAINABILITY

Energy Action Month 2015 — Actions Speak Louder than Words	22424 (09-17-15)
Federal Recycling for America's Future	22412 (04-02-15)
Federal Reporting Requirements on Hazardous and Toxic Chemicals	22408 (02-05-15)
Go Green — Celebrate Earth Day by Recycling eWaste	22412 (04-02-15)
Green Teams as Change Agents for Waste and Cost Reduction	22412 (04-02-15)
How to Recycle Postal Service Facility eWaste and Ink/Toner Cartridges	22412 (04-02-15)
Mail Recovery Center Search Process	22411 (03-19-15)
Recycling of Empty Toner and Inkjet Cartridges	22411 (03-19-15)
Recycling of Empty Toner and Inkjet Cartridges	22420 (07-23-15)
Required Procedures for Environmental Regulatory Agency Site Visits and Notices of Violation	22416 (05-28-15)

Smoke Detector Disposal 22426 (10-15-15)
USPS Targeted Chemicals Policy 22408 (02-05-15)

-U-

USPS MOTOR VEHICLE SAFETY MONTH

December is USPS Motor Vehicle Safety Month 22430 (12-10-15)

-V-

VEHICLES

December is USPS Motor Vehicle Safety Month 22430 (12-10-15)
EAS Privately-Owned Vehicle Program 22417 (06-11-15)

475 L'ENFANT PLAZA SW
WASHINGTON DC 20260-5540

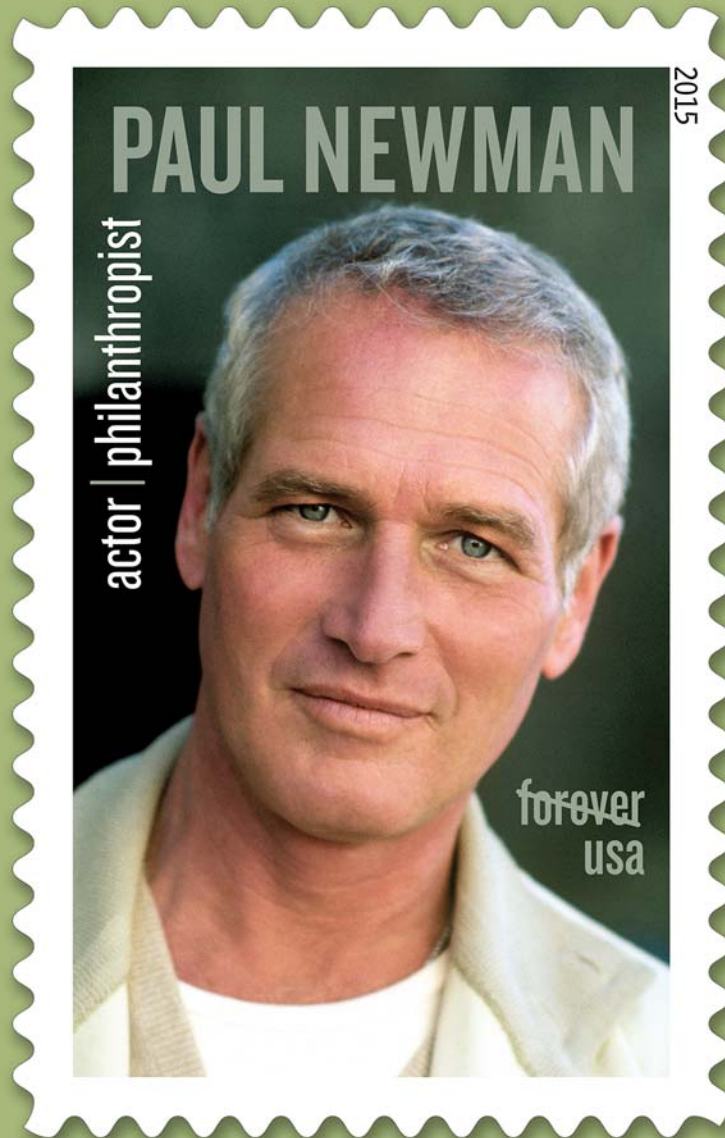
First-Class Mail
Postage & Fees Paid
USPS
Permit No. G-10

USPS®
Issues

*Paul
Newman*

Forever®
Stamp

On Sale Nationwide:
September 18, 2015.



Paul Newman photo © Steve Schapiro/Corbis